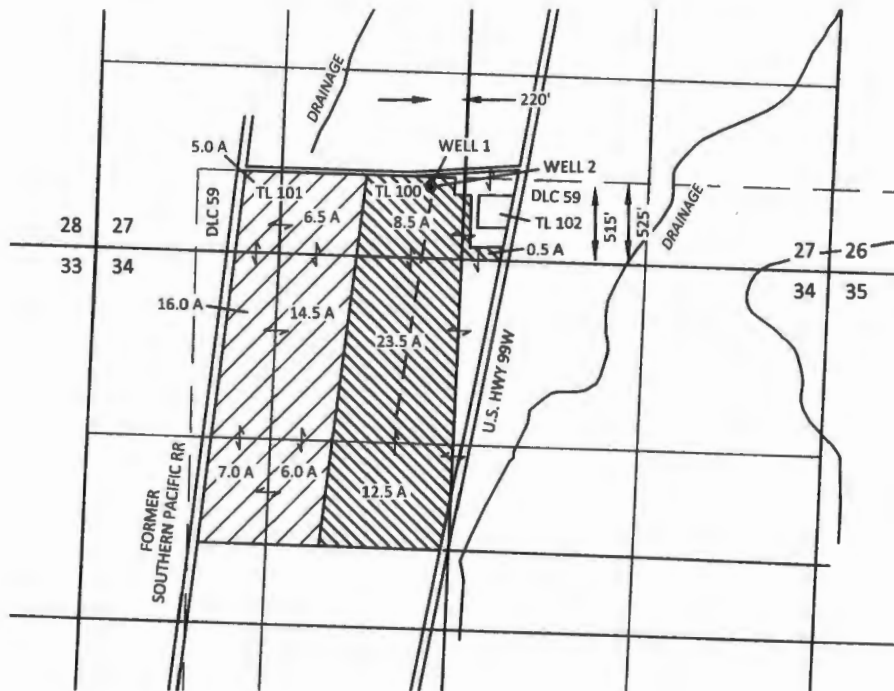



**GROUNDWATER REGISTRATION MODIFICATION  
APPLICATION MAP**  
Registration No. GR-1708  
Sections 27 & 34, T13S, R5W, W.M.,  
Benton County, Oregon

**PFS Financial, Inc.**



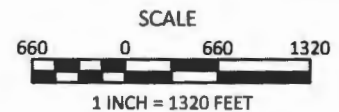
**EXPLANATION**

 PFS FINANCIAL, INC. OWNED LANDS  
45.0 ACRES

 LANDS OWNED BY OTHERS  
55.0 ACRES

 WELL

 PIPELINE (APPROX.)



**SKOOKUM**

WATER ASSOCIATES INC

1626 VICTORIAN WAY  
EUGENE, OR 97401  
(503) 319-8926

RECEIVED BY OWRD This map is not intended to provide legal  
dimensions or locations of property  
ownership lines

AUG 01 2016

July 12, 2016

SALEM, OR

Figure 1

T 12455