

SECTION 29 T.10S. R.6W. W.M.
BENTON COUNTY

THIS MAP WAS PREPARED FOR
ASSESSMENT PURPOSE ONLY

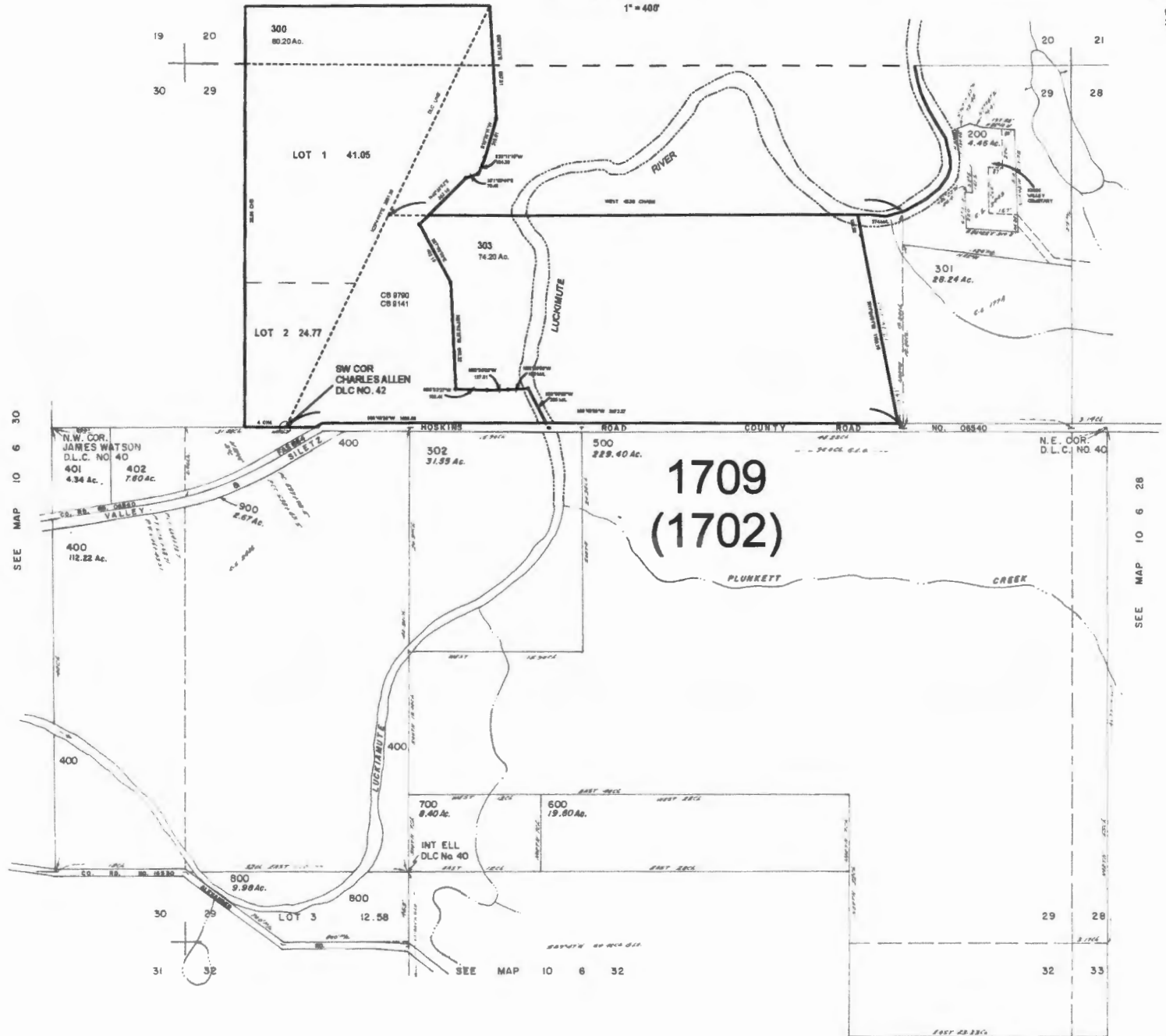
10 6 29

REV: 10-25-2013

CANCELLED:

901
304

1" = 400'



RECEIVED

AUG 31 2016

WATER RESOURCES DEPT
SALEM, OREGON

T 12467

10 6 29

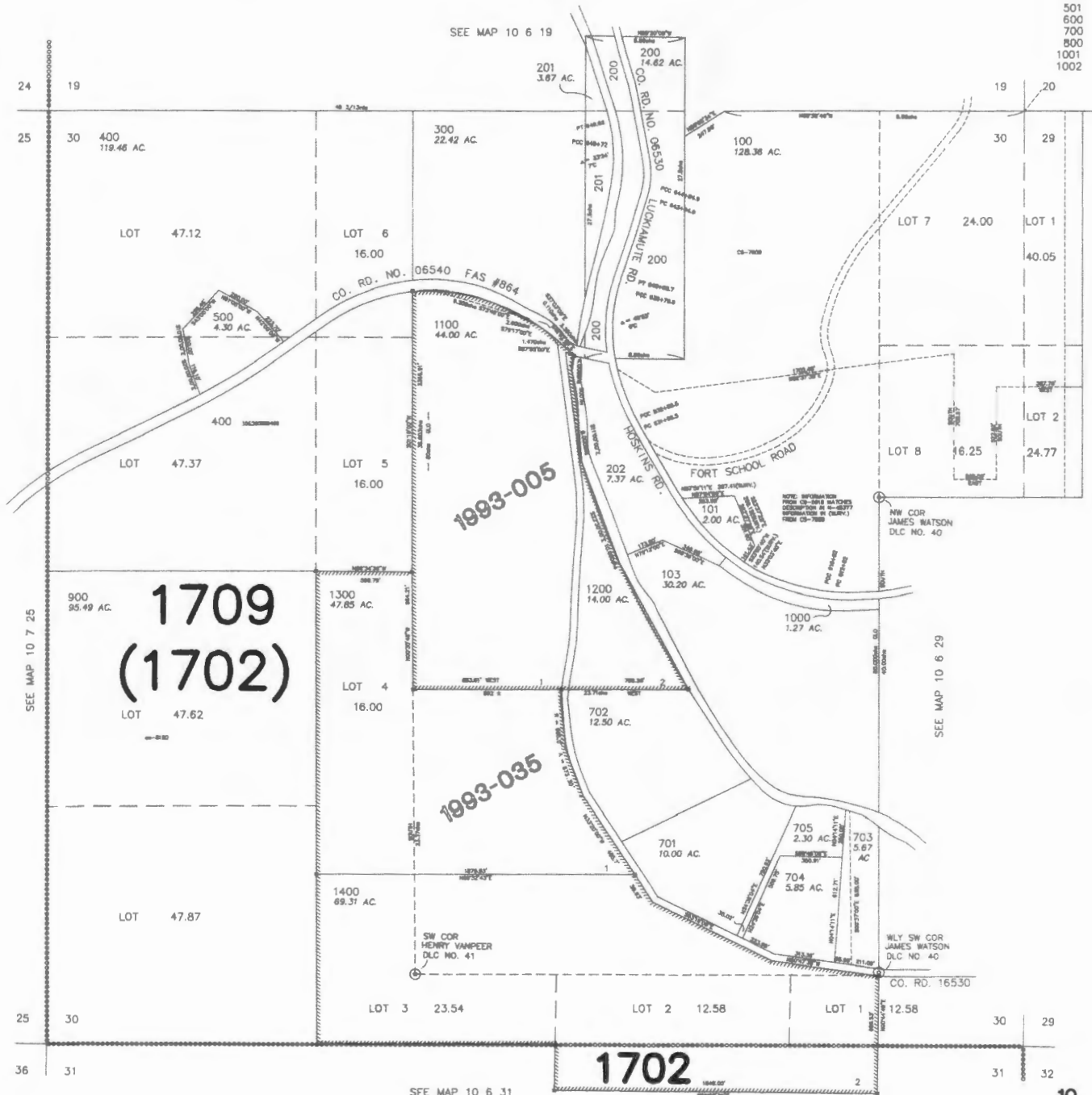
SECTION 30 T.10S. R.6W. W.M.
BENTON COUNTY

THIS MAP WAS PREPARED FOR
ASSESSMENT PURPOSES ONLY

10 6 30

REV: 12-24-2001
CANC.

1" = 400'



1709
(1702)

1993-005

1993-035

1702

RECEIVED

AUG 31 2016

WATER RESOURCES DEPT
SALEM, OREGON

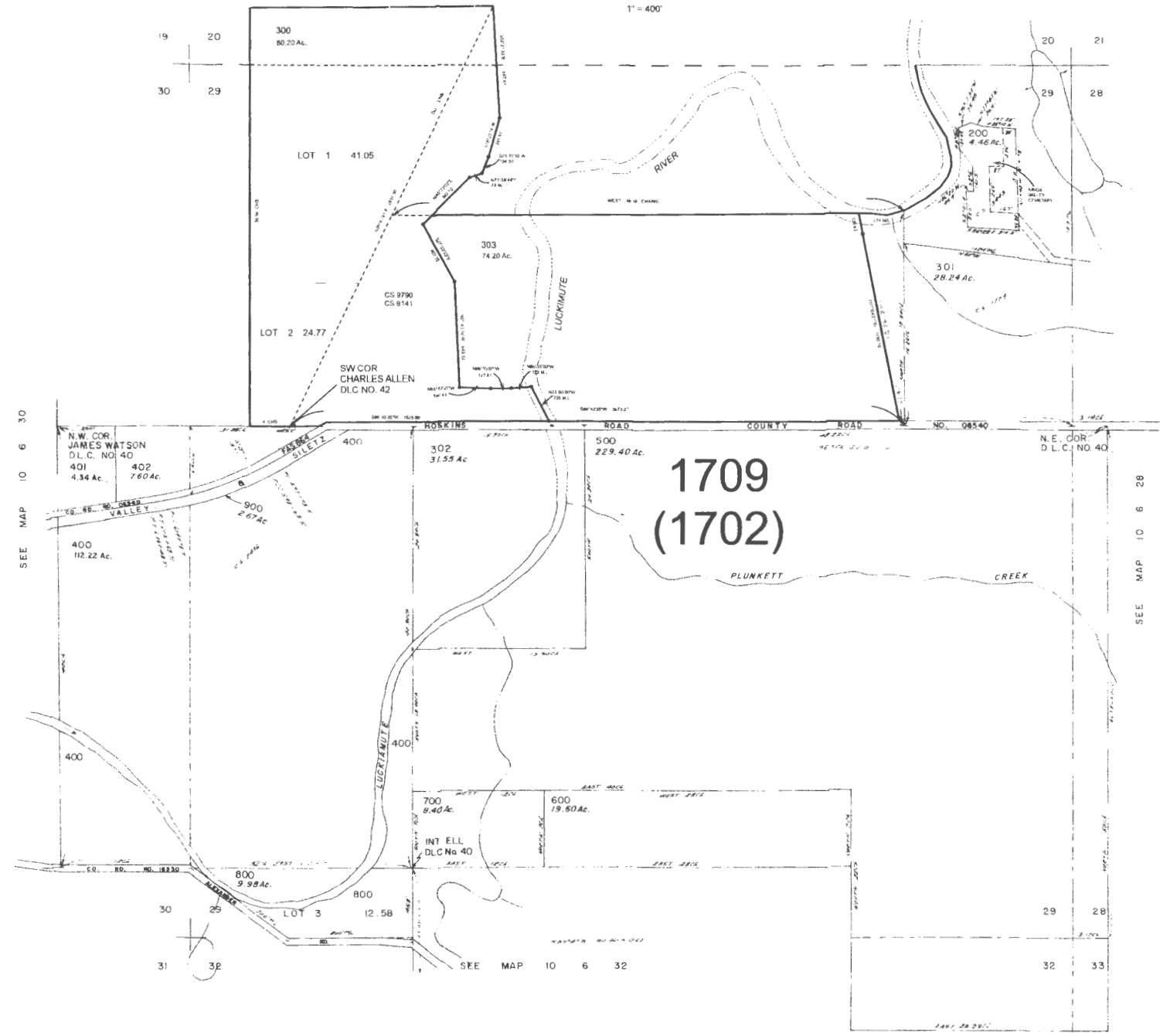
T 12467

10 6 30

SECTION 29 T.10S. R.6W. W.M.
BENTON COUNTY

THIS MAP WAS PREPARED FOR
ASSESSMENT PURPOSE ONLY

1" = 400'



RECEIVED

AUG 31 2016

WATER RESOURCES DEPT
SALEM, OREGON

T 12467

IMPORTANT
This Map for Assessment
and Taxation Purposes
ONLY

**SEC.17 T9S R4W WM
POLK COUNTY**

Scale 1" = 400'

See Map 9.4.8

9.4.17

Canceled No.
1000

13-8

13-5

WATER RESOURCES DEPT
SALEM, OREGON

AUG 31 2016

RECEIVED

See Map 9.4.18

See Map 9.4.16

See Map 9.4.21

See Map 9.4.20

01/29/16

9.4.17



T 12467

IMPORTANT
This Map for Assessment
and Taxation Purposes
ONLY

**SEC.20 T9S R4W WM
POLK COUNTY**

Scale 1" = 400'

9.4.20

See Map 9.4.17

16 17

17 18

19 20

20 21

500
22.89 AC

300
52.64 AC

200
103.34 AC

501
1.10 AC

400
1.28 AC

E.E. CORNER
HARVEY STEEPROW
DLC NO. 61

LOT 1 - 3.97 AC

600
66.30 AC

700
36.77 AC

W.E. CORNER
DLC NO. 44

See Map 9.4.19

LOT 2 - 22.35 AC

LOT 3

801
18.12 AC

S.W. CORNER
NEEDS VANDERPOOL
DLC NO. 63

800
4.00 AC

901
8.51 AC

1200
7.70 AC

1000

1100

1500
0.06 AC

1300
69.21 AC

N.W. CORNER
HARRISON LAYVILLE
DLC NO. 48

1400
126.31 AC

N.E. CORNER
HARRISON LAYVILLE
DLC NO. 48

S'LY S.E. CORNER
JOSEPH W. SIVVER
DLC NO. 44

LOT 4 - 12.28 AC

19 20

20 21

30 29

29 28

See Map 9.4.30

See Map 9.4.29

Cancelled No.

- 100
- 601
- 602
- 900
- 1301
- 1401
- 1402
- 1403
- 1501

13-5

See Map 9.4.21

WATER RESOURCES DEPT
SALEM, OREGON

AUG 31 2016

RECEIVED

10/18/14

9.4.20

T 12467

IMPORTANT
This Map for Assessment
and Taxation Purposes
ONLY

**SEC. 21 T9S R4W WM
POLK COUNTY**

9.4.21

Scale 1" = 400'

See Map 9.4.17

See Map 9.4.16

200
88.84 AC

100
203.00 AC
100M1

300
194.00 AC

13-5

See Map 9.4.20

See Map 9.4.22

N.E. CORNER
HARRISON UNVILLE
DLC NO. 45

S.E. CORNER
BREDER WARDENPOOL
DLC NO. 63

400
26.82 AC

500
35.20 AC

600
98.00 AC

S.W. CORNER
THOMAS L. BOUNDS
DLC NO. 61

N.W. CORNER
C.T. DAVIDSON
DLC NO. 50

N.E. CORNER
THOMAS L. BOUNDS
DLC NO. 61

S.W. CORNER
JOHN R. BOUNDS
DLC NO. 70

N.W. CORNER
DLC NO. 69

N.E. CORNER
C.T. DAVIDSON
DLC NO. 50

RECEIVED
AUG 31 2016
WATER RESOURCES DEPT
SALEM, OREGON

10/18/14

9.4.21

T 12467

PREPARATION OF THIS MAP IS FOR THE PURPOSE OF IDENTIFYING THE LOCATION OF THE WATER RIGHT ONLY. THERE IS NO INTENT TO PROVIDE DIMENSIONS OR LOCATION OF PROPERTY OWNERSHIP LINES.

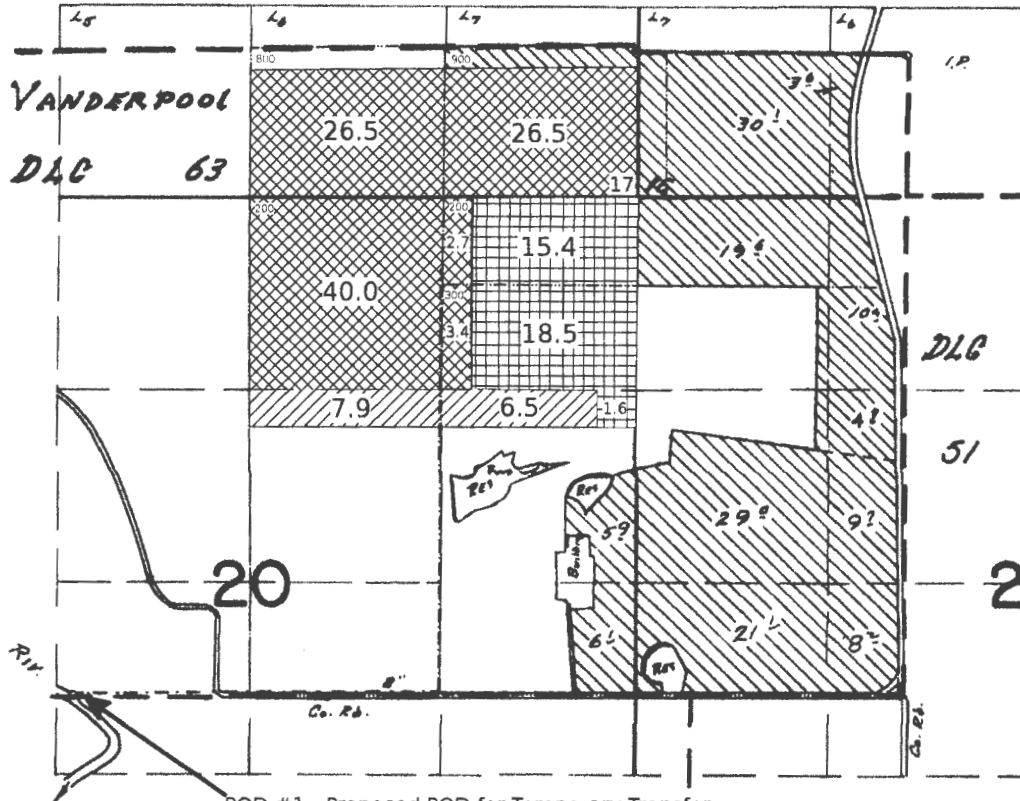
T.9S. R.4W. W.M.

RECEIVED

"To" lands

AUG 31 2016

WATER RESOURCES DEPT
SALEM, OREGON







Scale 1" = 1320'

----- Property Boundary
- - - - - Pipeline

POD #1 - Proposed POD for Temporary Transfer
10' North and 5680' West from the
SE Corner of DLC 63

**FINAL PROOF SURVEY
UNDER**

-  Temporary Transfer POU for C 76441
-  Temporary Transfer POU for C 37768
-  Temporary Transfer POU for C 76492
-  POU not part of this transfer

Application No. 48318 Permit No. 35334
IN NAME OF

PATRICK A. DALE

Surveyed MAY 13 1974, by T. J. Paul

T 12467

DFP-2LL-139

RECEIVED

"FROM" Lands

T-456

JUL 22 1980
WATER RESOURCES DEPT.
SALEM, OREGON

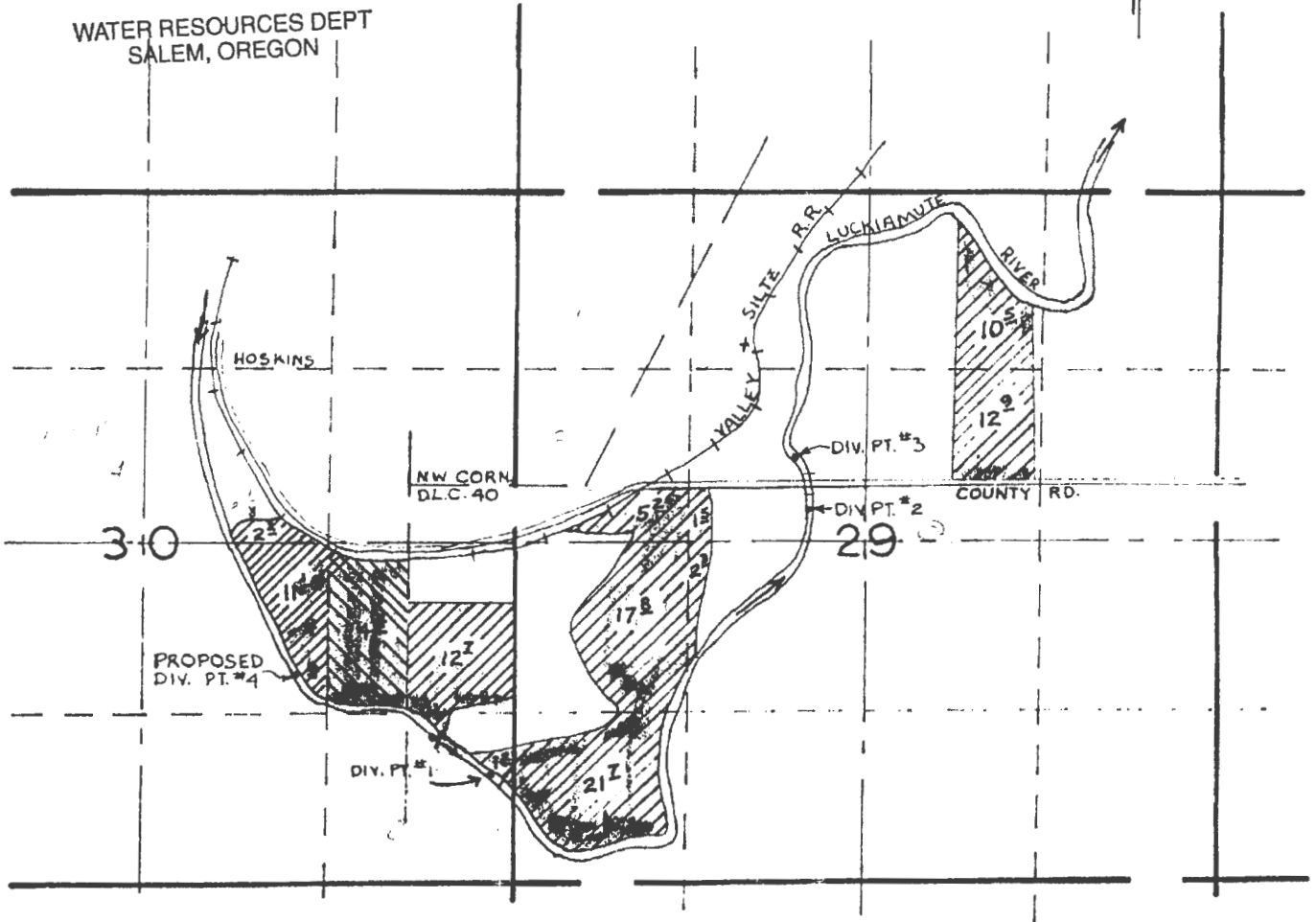
RECEIVED

AUG 11 1980
WATER RESOURCES DEPT.
SALEM, OREGON

RECEIVED Transfer To

AUG 31 2016

WATER RESOURCES DEPT.
SALEM, OREGON



GRACEN L. BUSH

T-4568

T-4509

The proposed Div. Pt. #4 is located 1440 S and 840 W from the N.W. corner of D.L.C. 40 within the NW 1/4 SE 1/4 of section 30 T10S R6W in Benton County. Div. Pt. #1 #2 and #3 are established in previous rights.

scale: 4" = 1 Mile

T 12467