

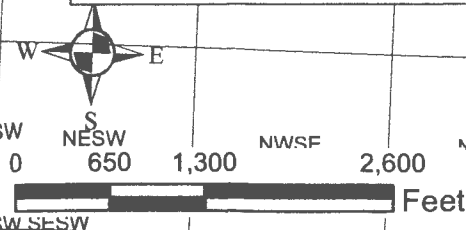
SANTIAM WATER CONTROL DISTRICT

George Meyer Inclusion Transfer Map

Santiam Water Control District

T. 1248

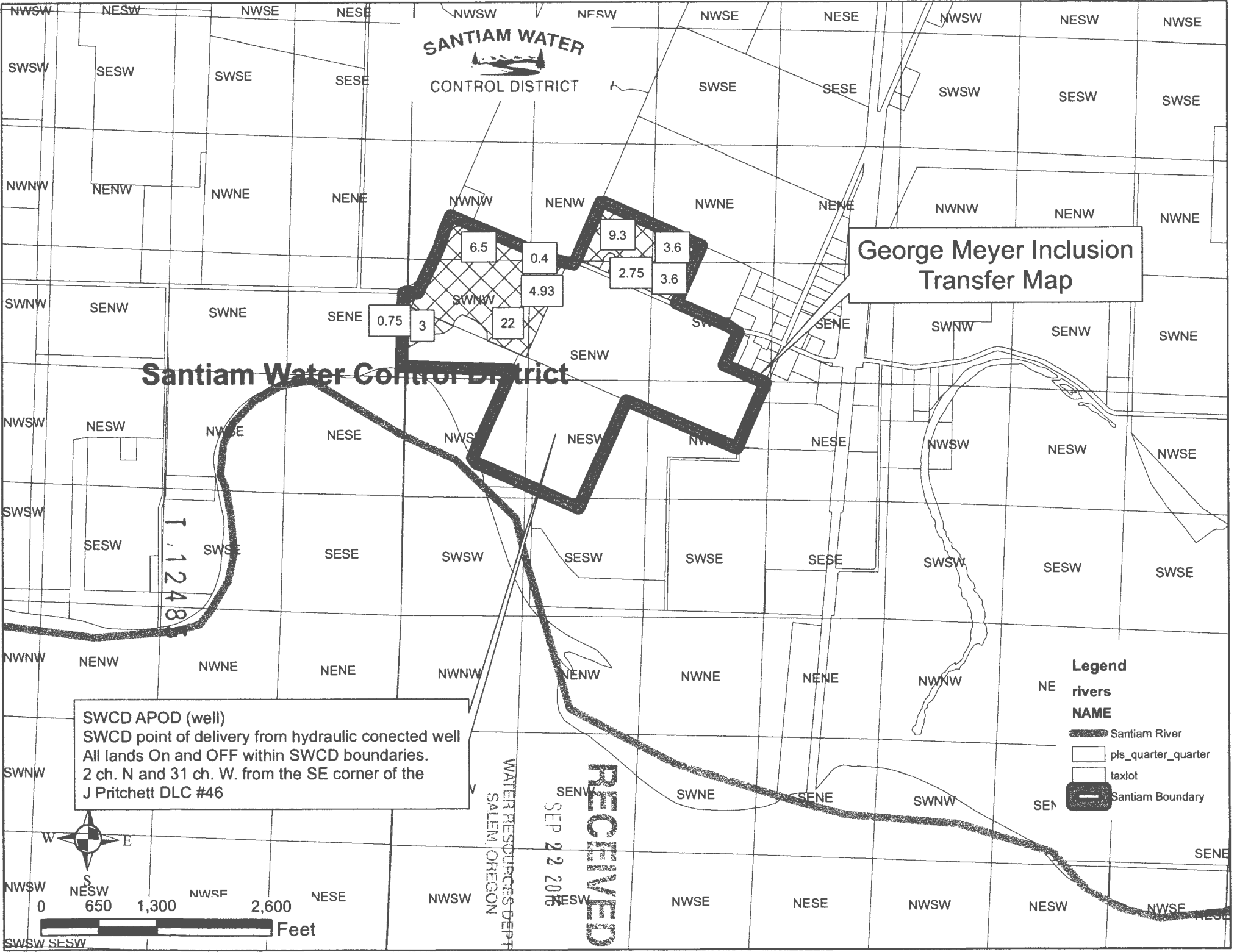
SWCD APOD (well)
 SWCD point of delivery from hydraulic conected well
 All lands On and OFF within SWCD boundaries.
 2 ch. N and 31 ch. W. from the SE corner of the
 J Pritchett DLC #46



WATER RESOURCES DEPT
 SALEM, OREGON

RECEIVED
 SEP 22 2016

- Legend**
- NE rivers
 - NAME
 - Santiam River
 - pls_quarter_quarter
 - taxlot
 - Santiam Boundary



6.5 0.4 9.3 3.6
 2.75 3.6
 0.75 3 22 4.93



FIGURE 1

**Well Location and
Relationship to Santiam River**

**GM Meyer Farms, LLC
Jefferson, Oregon**

T 12485

WATER RESOURCES DEPT
SALEM, OREGON

SEP 22 2016

RECEIVED

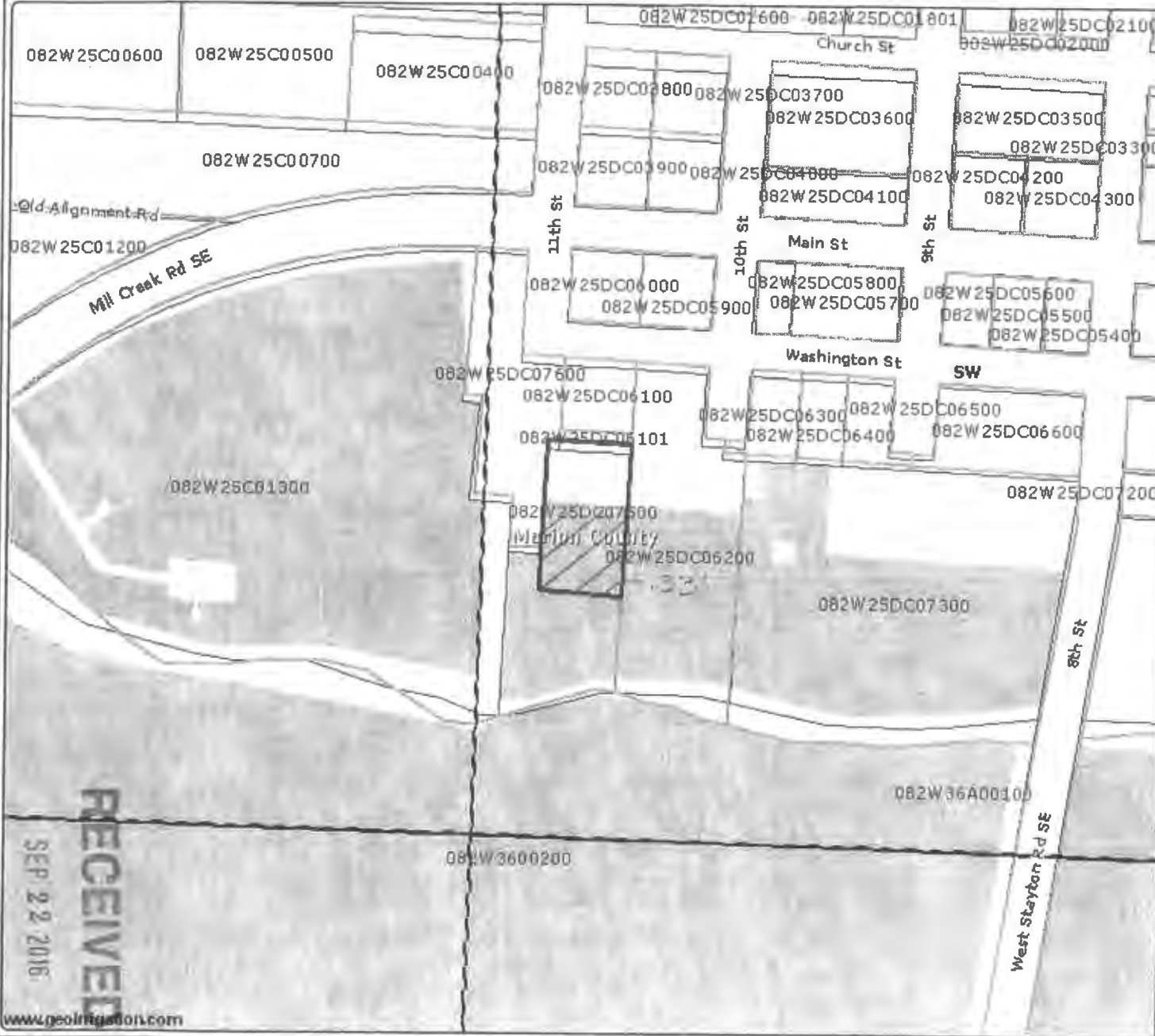
EnviroLogic Resources, Inc.
ENVIRONMENTAL • WATER RESOURCES SCIENTISTS



Santiam Water Control District

20 -2011 Transfer off
Marion County Housing
Authority R30393

.33 acres 8S2W25SWSE, Cert
68663 1909 082W25DC07500



- Cities
- District Boundary
- County Boundary
- Highway
- Interstate
- Road Labels
- Townships
- Sections
- Section Labels
- Quarters
- Quarter Labels
- Quarter Quarters
- Quarter Quarter Labels
- Parcel Number Labels
- Taxlots
- Historical Taxlots
- Canal All
- POU District
- NHD Stream/River Area
- NHD Waterbodies



Scale 1" = 200'
Created: 8/15/2011

T 12485

WATER RESOURCES DEPT
SALEM, OREGON

SEP 22 2016

RECEIVED

www.geoinformation.com

DISCLAIMER: This map is intended for display purposes only and is not intended for any legal representations. There are no warranties, expressed or implied, that accompany this product.

Santiam Water Control District

7-2011 Transfer off Carol Chambers R35101

5.1 acres 9S2W4NWNW, Cert 68663 1909 092W0400600



- Cities
- District Boundary
- County Boundary
- Highway
- Interstate
- Road Labels
- Townships
- Sections
- Section Labels
- Quarters
- Quarter Labels
- Quarter Quarters
- Quarter Quarter Labels
- Taxlots
- Historical Taxlots
- Canal All
- POU District
- NHD Stream/River Area
- NHD Waterbodies



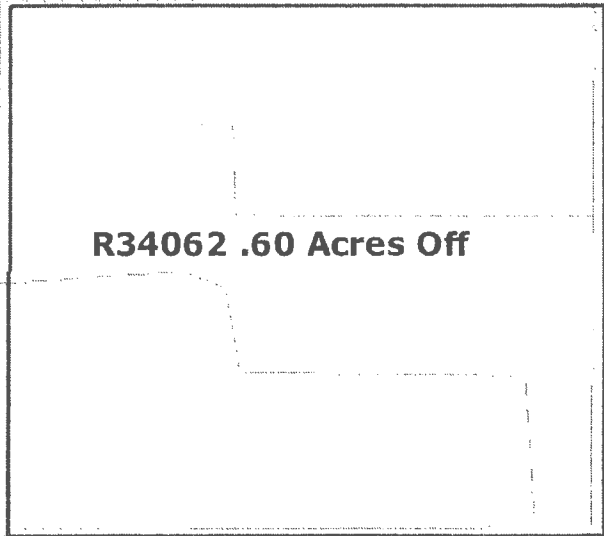
Scale 1" = 300'
Created: 8/12/2011

T 12485

WATER RESOURCES DEPT
SALEM, OREGON

www.geoinformation.com

DISCLAIMER: This map is intended for display purposes only and is not intended for any legal representations. There are no warranties, expressed or implied, that accompany this product.



T 12485

SE

SHAFF RD SE

SHAFF RD SE

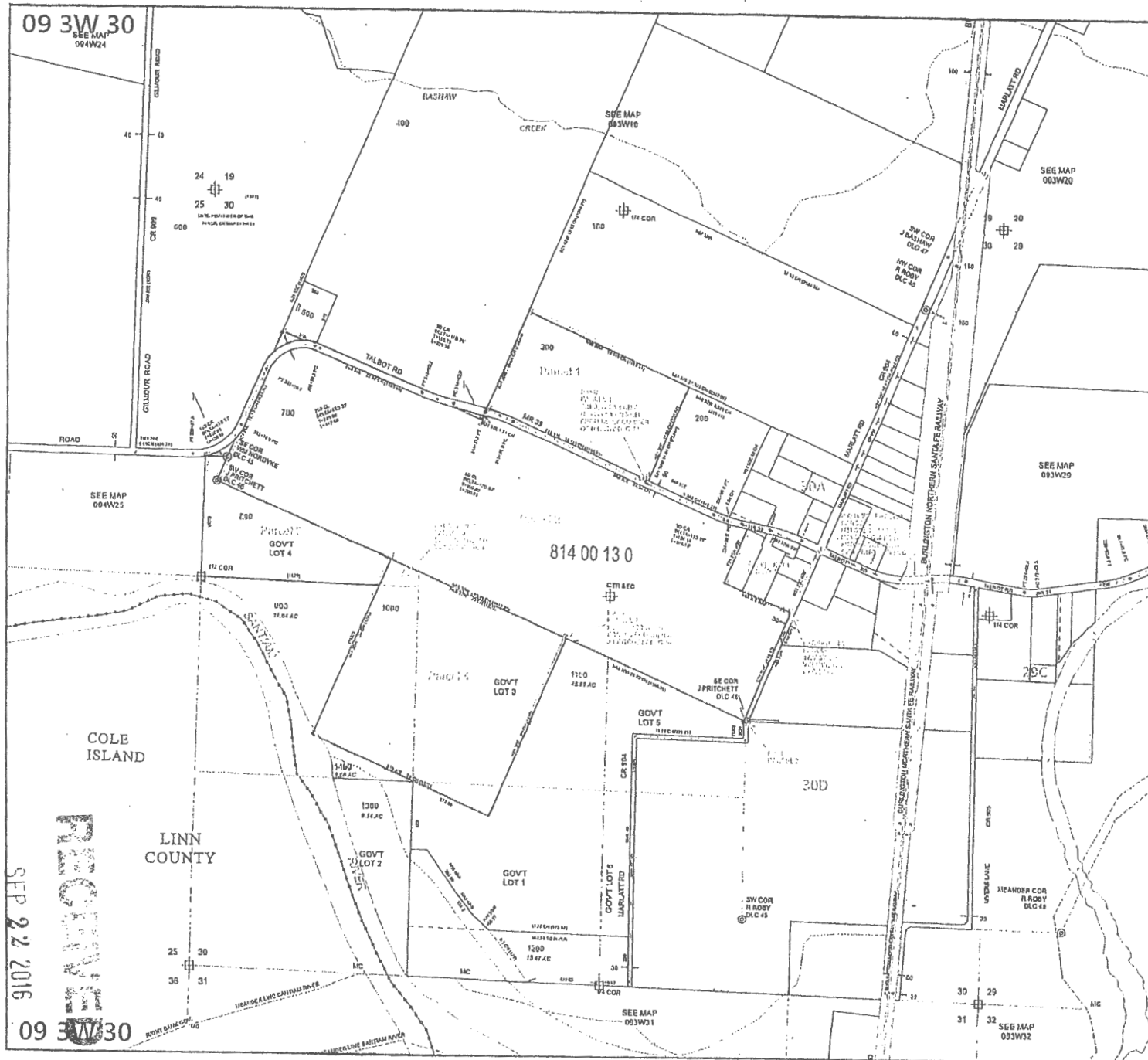
Collier Lateral

RECORDED

SEP 22 2016

WATER RESOURCES DEPT
SALEM, OREGON

Sources: Esri, HERE, DeLorme, Intermap, increment P Corp., GEBCO, USGS, FAO, NPS, NRCAN, GeoBase, IGN, Kadaster NL, Ordnance Survey, Esri Japan, METI, Esri China (Hong Kong), swisstopo, MapmyIndia, © OpenStreetMap contributors, and the GIS User Community. Source: Esri, DigitalGlobe, GeoEye, Earthstar Geographics, CNES/Airbus DS, USDA, USGS, AEX, Getmapping, Aerogrid, IGN, IGP, swisstopo, and the GIS User Community, Esri, HERE, DeLorme, MapmyIndia, © OpenStreetMap contributors, and the GIS user community



09 3W 30

MARION COUNTY, OREGON
SEC 30 T9S R3W W.M.
SCALE 1" = 400'

- LEGEND**
- | | | |
|--------------------------|-------|-----------------------|
| LINE TYPES | | |
| Taxlot Boundary | ----- | Historical Boundary |
| Road Right-of-Way | ----- | Easement |
| Railroad Right-of-Way | ----- | Railroad Centerline |
| Private Road ROW | ----- | Taxcode Line |
| Subdivision/Plat Bndry | ----- | Map Boundary |
| Waterline - Taxlot Bndry | ----- | Waterline - Non Bndry |
-
- SYMBOL TYPES**
- | | |
|-----------------|-------------------------|
| Survey Monument | + 1/26th Section Cor. |
| Road Station | ⊕ 1/4 Section Cor. |
| DLC Corner | ⊙ 16, 15 Section Corner |
| | ⊙ 21, 22 Section Corner |

NUMBERS
Tax Code Number
000 00 00 0

ACREAGE All acres listed are Net Acres, excluding any portions of the taxlot within public ROWs

TICK MARKS Tick Marks: If a tick mark is indicated on the end of a line, then the dimension goes to the tick mark. This is used when dimensions extend into public right-of-ways.

CANCELLED NUMBERS

DISCLAIMER: THIS MAP WAS PREPARED FOR ASSESSMENT PURPOSES ONLY

Assessor's Office
County of Marion, Oregon

FOR ADDITIONAL MAPS VISIT OUR WEBSITE AT www.co.marion.or.us

PLOT DATE: 6/28/2016

09 3W 30

1 2405 WATER RESOURCES DEPT SALEM OREGON

SEP 22 2016

Santiam Water Control District

2011 Transfer off Carol Chambers R35099

5.9 acres 9S2W4NWNW, Cert 68663 1909 092W0400800



- Cities
- District Boundary
- County Boundary
- Highway
- Interstate
- Road Labels
- Townships
- Sections
- Section Labels
- Quarters
- Quarter Labels
- Quarter Quarters
- Quarter Quarter Labels
- Taxlots
- Historical Taxlots
- Canal All
- POU District
- ▨ NHD Stream/River Area
- ▨ NHD Waterbodies



Scale 1" = 300'
Created: 8/12/2011

RECEIVED

SEP-22-2016

WATER RESOURCES DEPT
SALEM, OREGON

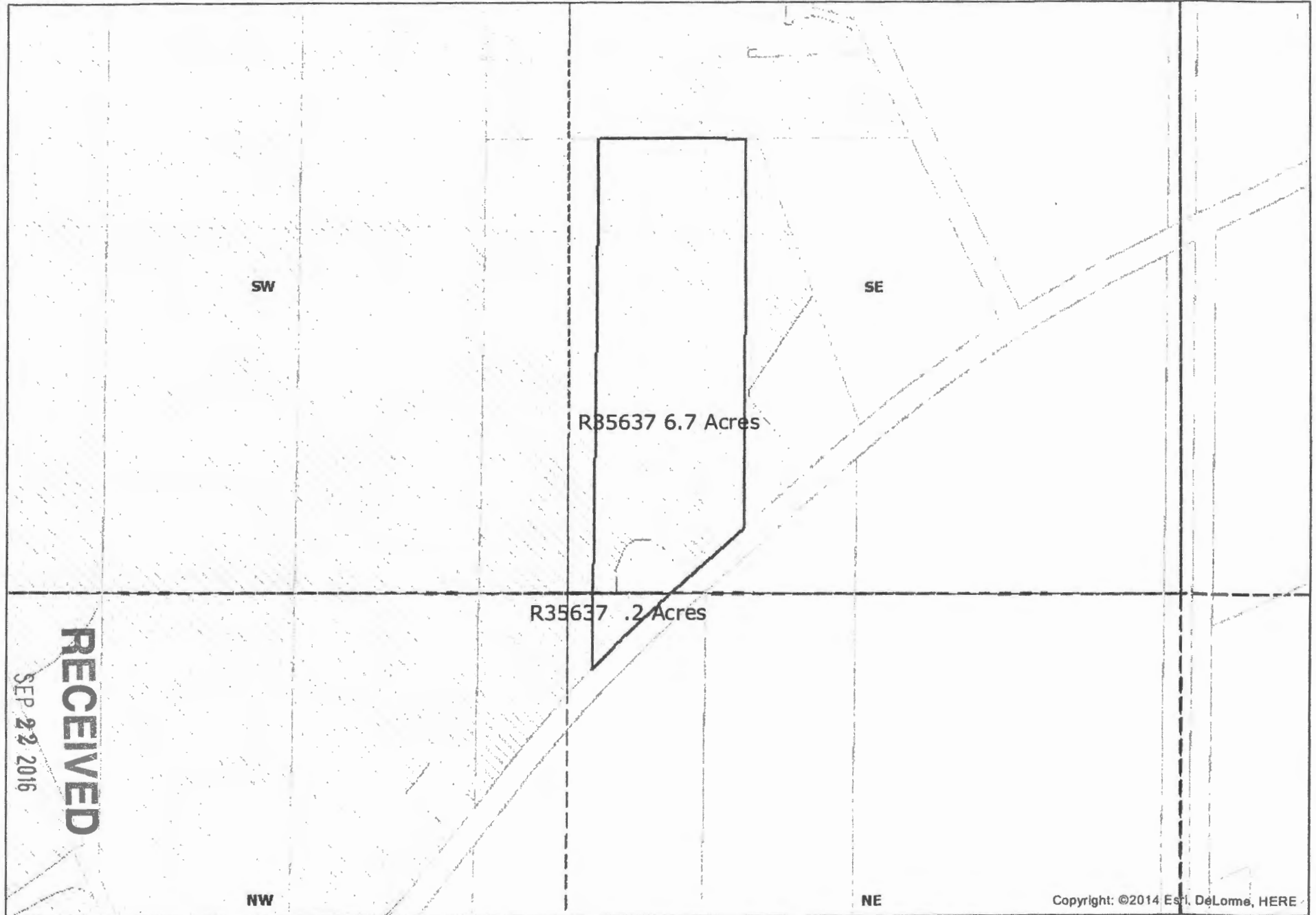
T 12485

www.geointegration.com

DISCLAIMER: This map is intended for display purposes only and is not intended for any legal representations. There are no warranties, expressed or implied, that accompany this product.

Richard & Laura Adair R35637 6.9 Acres 68665 Contract Exhibit A

6.7 68663
.2 68665

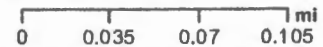


T 12485

WATER RESOURCES DEPT
SALEM, OREGON



Author: Tresa Peters
Organization: Santiam Water Control District



Date Created: March 28, 2014

Copyright: ©2014 Esri, DeLorme, HERE

Santiam Water Control District

**Transfer off Marion
Mitigation Bank R35714**
18-2011
37.8 acres 9S2W27SENE, Cert
68663 1909 092W2700500



- Cities
- ▭ District Boundary
- ▭ County Boundary
- Highway
- Interstate
- Road Labels
- ▭ Townships
- ▭ Sections
- Section Labels
- ▭ Quarters
- Quarter Labels
- ▭ Quarter Quarters
- Quarter Quarter Labels
- Taxlots
- ▭ Historical Taxlots
- Canal/All
- POU District
- NHD Stream/Prver Area
- NHD Waterbodies

RECEIVED

SEP 22 2016

WATER RESOURCES DEPT
SALEM, OREGON

www.geoirrigation.com
Cert 68663 5/14/1909
R35714 092W2700500



Scale 1" = 624'
Created: 8/11/2011

DISCLAIMER: This map is intended for display purposes only and is not intended for any legal representations. There are no warranties, expressed or implied, that accompany this product.

T 12485

Santiam Water Control District

**Transfer off Kevin & Trish
Glidewell R35616**



- Cities
- ▭ District Boundary
- ▭ County Boundary
- Highway
- Interstate
- Road Labels
- ▭ Townships
- ▭ Sections
- Section Labels
- ▭ Quarters
- Quarter Labels
- ▭ Quarter Quarters
- Quarter Quarter Labels
- Property Account Labels
- ▭ Taxlots
- Canal All
- ▭ Transfers Inchoate
- ▭ Transfers Off
- ▭ Transfers OWRD
- ▭ POU District
- ▭ NHD Stream/River Area
- ▭ NHD Waterbodies



Scale 1" = 200'
Created: 4/20/2012

T 12485

WATER RESOURCES DEPT
SALEM, OREGON

SEP 22 2016

RECEIVED

www.gisinfo.gov.com

DISCLAIMER: This map is intended for display purposes only and is not intended for any legal representations. There are no warranties, expressed or implied, that accompany this product.