

**SANTIAM WATER
CONTROL DISTRICT**

**George Meyer
SWCD Inclusion
Transfer Map**

WM9.00S1.00W11NWSE WM9.00S1.00W11NESE
WM9.00S1.00W11SWSE WM9.00S1.00W11SESE
WM9.00S1

Authorized POD
Lot 2 (SW1/4 SE1/4) Sec 11
T.9S, R. 1W being
1800' S and 2830' E
from W1/4 corner Sec 11

Santiam Water Control District

RECEIVED
SEP 9 2016
WATER RESOURCES DEPT
SALEM, OREGON

SWCD APOD (well)
SWCD point of delivery from hydraulic conected well
All lands On and OFF within SWCD boundaries.
2 ch. N and 31 ch. W. from the SE corner of the
J Pritchett DLC #46

Legend

- rivers
- NAME
- Santiam River
- pls_quarter_quarter
- taxdot
- Santiam Boundary

CERTIFIED WATER RIGHT EXAMINER
30680
William E. McGill
WILLIAM E. MCGILL
MAY 3, 2011
STATE OF OREGON
EXPIRES: 12/31/2016

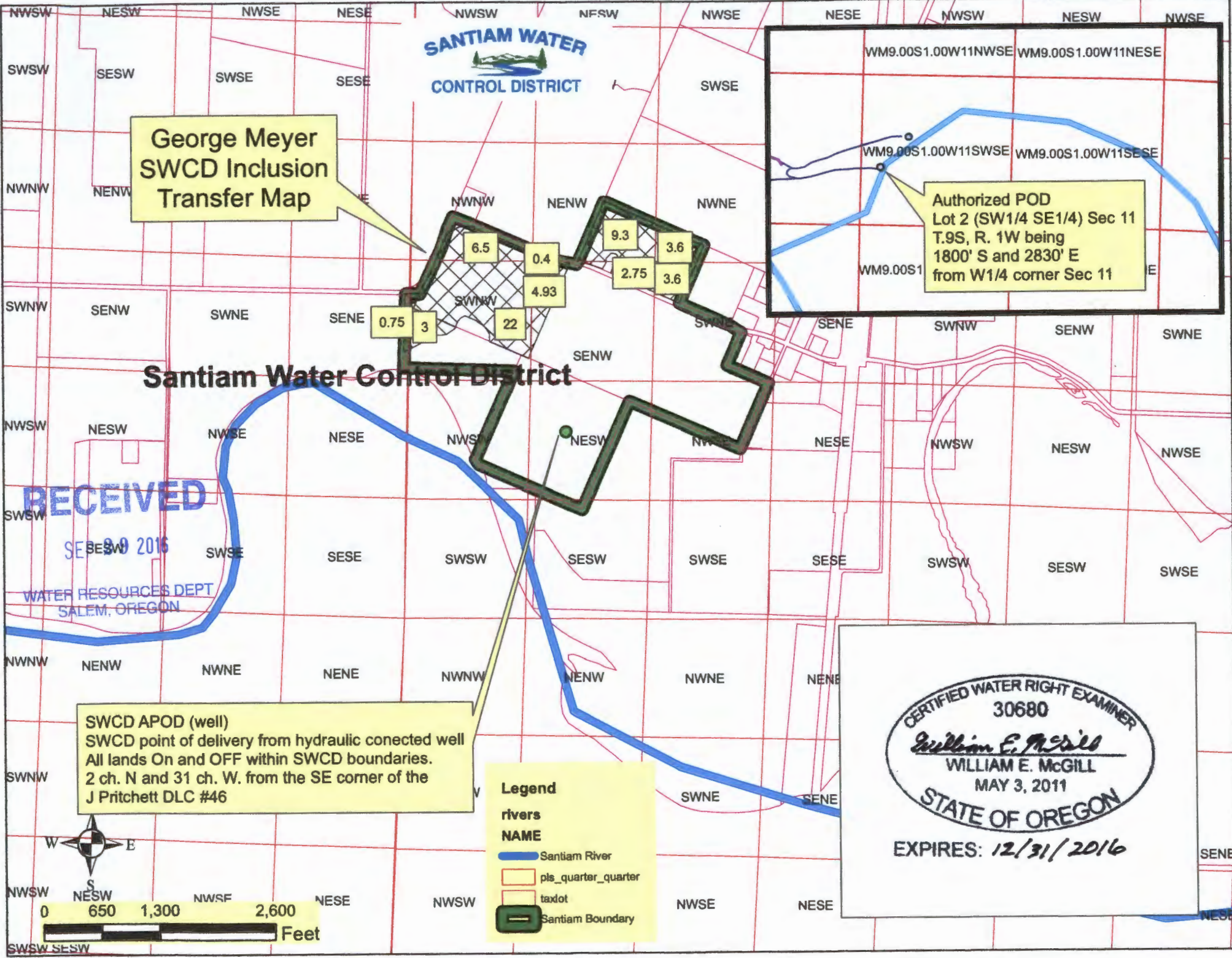
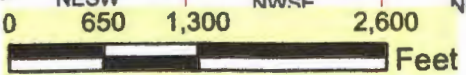




FIGURE 1

**Well Location and
Relationship to Santiam River**

**GM Meyer Farms, LLC
Jefferson, Oregon**

T 12485

WATER RESOURCES DEPT
SALEM, OREGON

SEP 22 2016

RECEIVED



09 3W 30

09 3W 30
SEE MAP
004W24



MARION COUNTY, OREGON
SEC 30 T9S R3W W.M.
SCALE 1" = 400'

LEGEND

- LINE TYPES
- Taxlot Boundary
 - Road Right-of-Way
 - Railroad Right-of-Way
 - Private Road ROW
 - Subdivision/Plat Boundary
 - Waterline - Taxlot Boundary
 - Historical Boundary
 - Easement
 - Railroad Centerline
 - Taxcode Line
 - Map Boundary
 - Waterline - Non Boundary

- SYMBOL TYPES
- Survey Measurement
 - Road Station
 - DLC Corner
 - 1/26TH Section Cor.
 - 1/4 Section Cor.
 - 16, 15 Section Corner
 - 21 22

NUMBERS
Tax Code Number
000 00 00 0

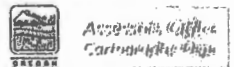
Acreage
426.40
All acres listed are Net Acres, excluding any portions of the taxlot within public ROW's

NOTES
Tick Marks: If a tick mark is indicated on the end of a line, then the dimension goes to the tick mark. This is used when dimensions extend into public right-of-way.



CANCELLED NUMBERS

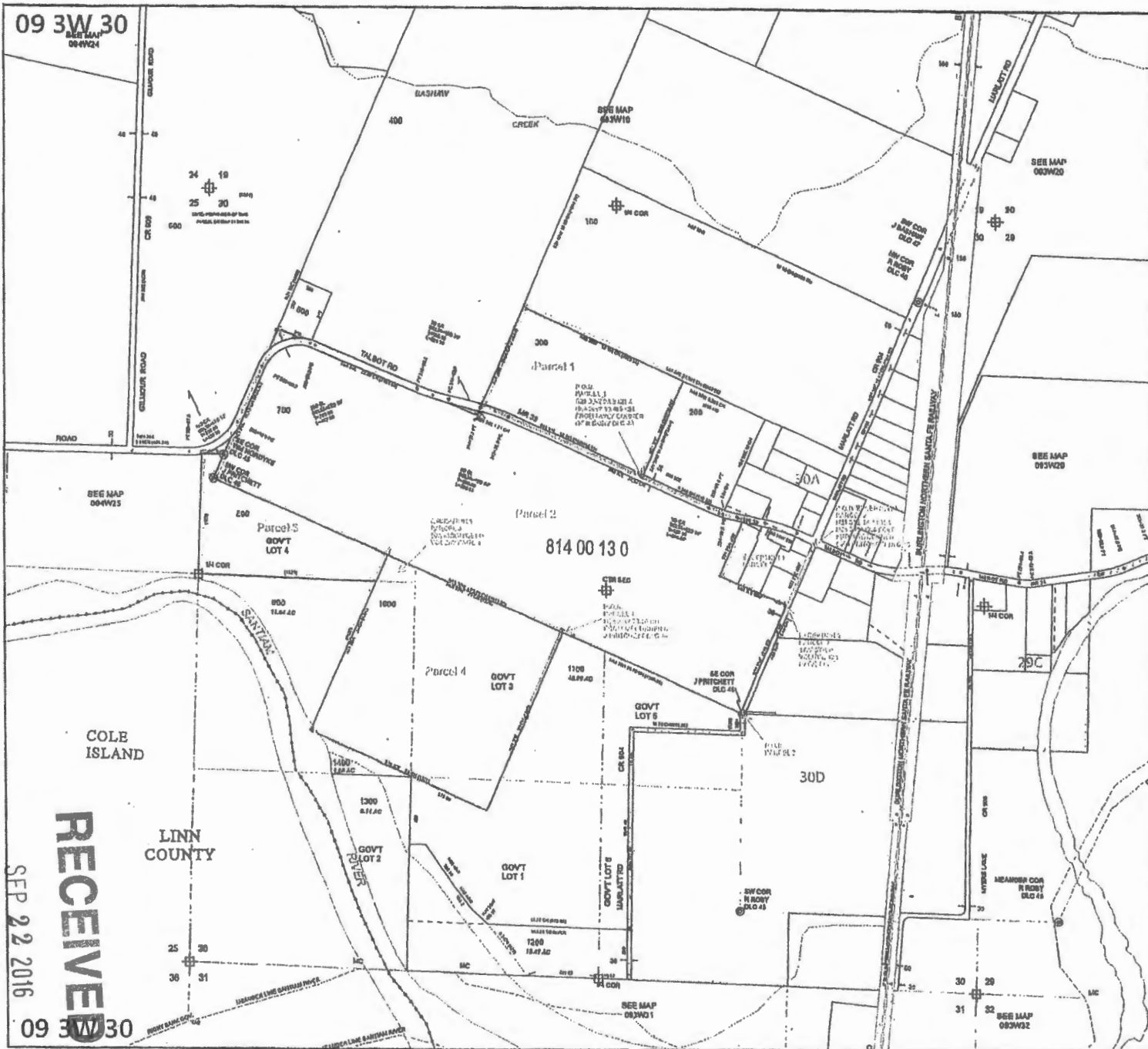
DISCLAIMER: THIS MAP WAS PREPARED FOR ASSESSMENT PURPOSES ONLY



FOR ADDITIONAL MAPS VISIT OUR WEBSITE AT www.co.marion.oregon.gov

PLOT DATE: 6/28/2016

09 3W 30



09 3W 30

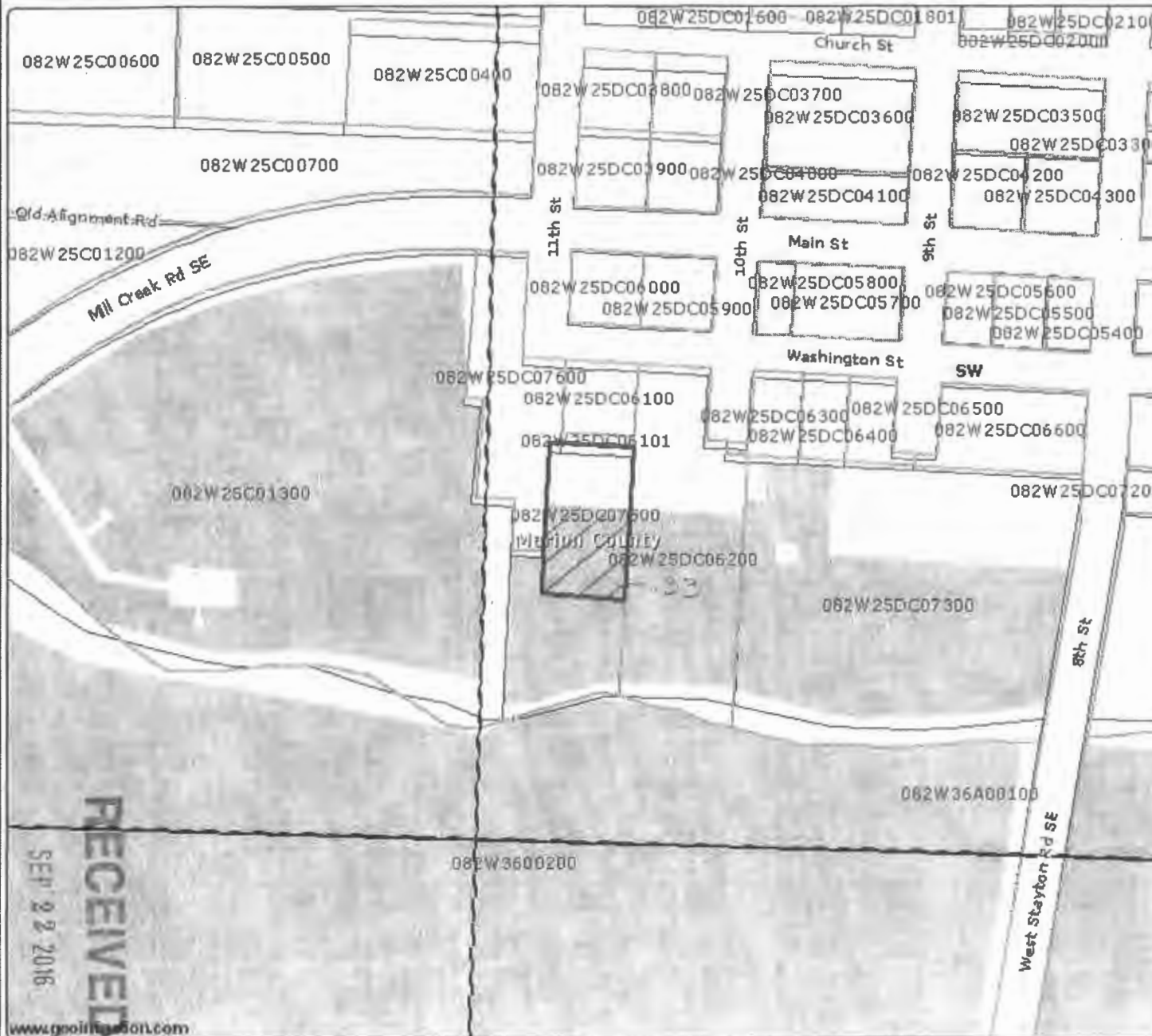
T
2485
WATER RESOURCES DEPT
SALEM, OREGON

RECEIVED
SEP 22 2016

Santiam Water Control District

**20-2011 Transfer off
Marion County Housing
Authority R30393**

**.33 acres 8S2W25SWSE, Cert
68663 1909 082W25DC07500**



- Cities
- District Boundary
- County Boundary
- Highway
- Interstate
- Road Labels
- Townships
- Sections
- Section Labels
- Quarters
- Quarter Labels
- Quarter Quarters
- Quarter Quarter Labels
- Parcel Number Labels
- Taxlots
- Historical Taxlots
- Canal All
- POU District
- NHD Stream/River Area
- NHD Waterbodies



Scale 1" = 200'
Created: 8/15/2011

T 12485

WATER RESOURCES DEPT
SALEM, OREGON

SEP 22 2016

RECEIVED

www.goinfocool.com

DISCLAIMER: This map is intended for display purposes only and is not intended for any legal representations. There are no warranties, expressed or implied, that accompany this product.

Santiam Water Control District

7-2011 Transfer off Carol Chambers R35101

5.1 acres 9S2W4NWNW, Cert 68663 1909 092W0400600



- Cities
- District Boundary
- County Boundary
- Highway
- Interstate
- Road Labels
- Townships
- Sections
- Section Labels
- Quarters
- Quarter Labels
- Quarter Quarters
- Quarter Quarter Labels
- Taxlots
- Historical Taxlots
- Canal All
- POU District
- ▨ NHD Stream/River Area
- ▨ NHD Waterbodies

T 12485

WATER RESOURCES DEPT
SALEM, OREGON

RECEIVED
SEP 21 2016

www.pouirrigation.com



Scale 1" = 300'
Created: 8/12/2011

DISCLAIMER: This map is intended for display purposes only and is not intended for any legal representations. There are no warranties, expressed or implied, that accompany this product.

Santiam Water Control District

6-2011 Transfer off Carol Chambers R35099

5.9 acres 9S2W4NWNW, Cert 68663 1909 092W0400800



- Cities
- District Boundary
- County Boundary
- Highway
- Interstate
- Road Labels
- Townships
- Sections
- Section Labels
- Quarters
- Quarter Labels
- Quarter Quarters
- Quarter Quarter Labels
- Taxlots
- Historical Taxlots
- Canal All
- POU District -
- NHD Stream/River Area
- NHD Waterbodies



Scale 1" = 300'
Created: 8/12/2011

RECEIVED

SEP 22 2016

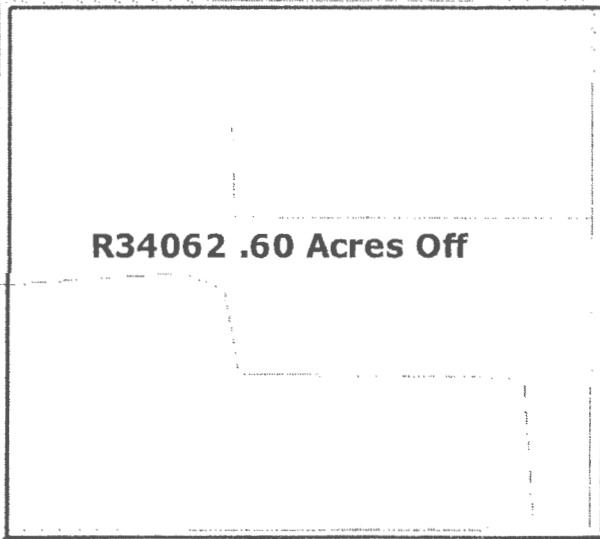
WATERSOURCES DEPT
SALEM, OREGON

www.geoimaging.com

DISCLAIMER: This map is intended for display purposes only and is not intended for any legal representations. There are no warranties, expressed or implied, that accompany this product.

T 12485

Transfer Off .60 Acres 9S 1W 68663 R34062 DINN 15-5



R34062 .60 Acres Off

T 12485

SE

SHAFF RD SE

SHAFF RD SE

Coiler Lateral

RECEIVED

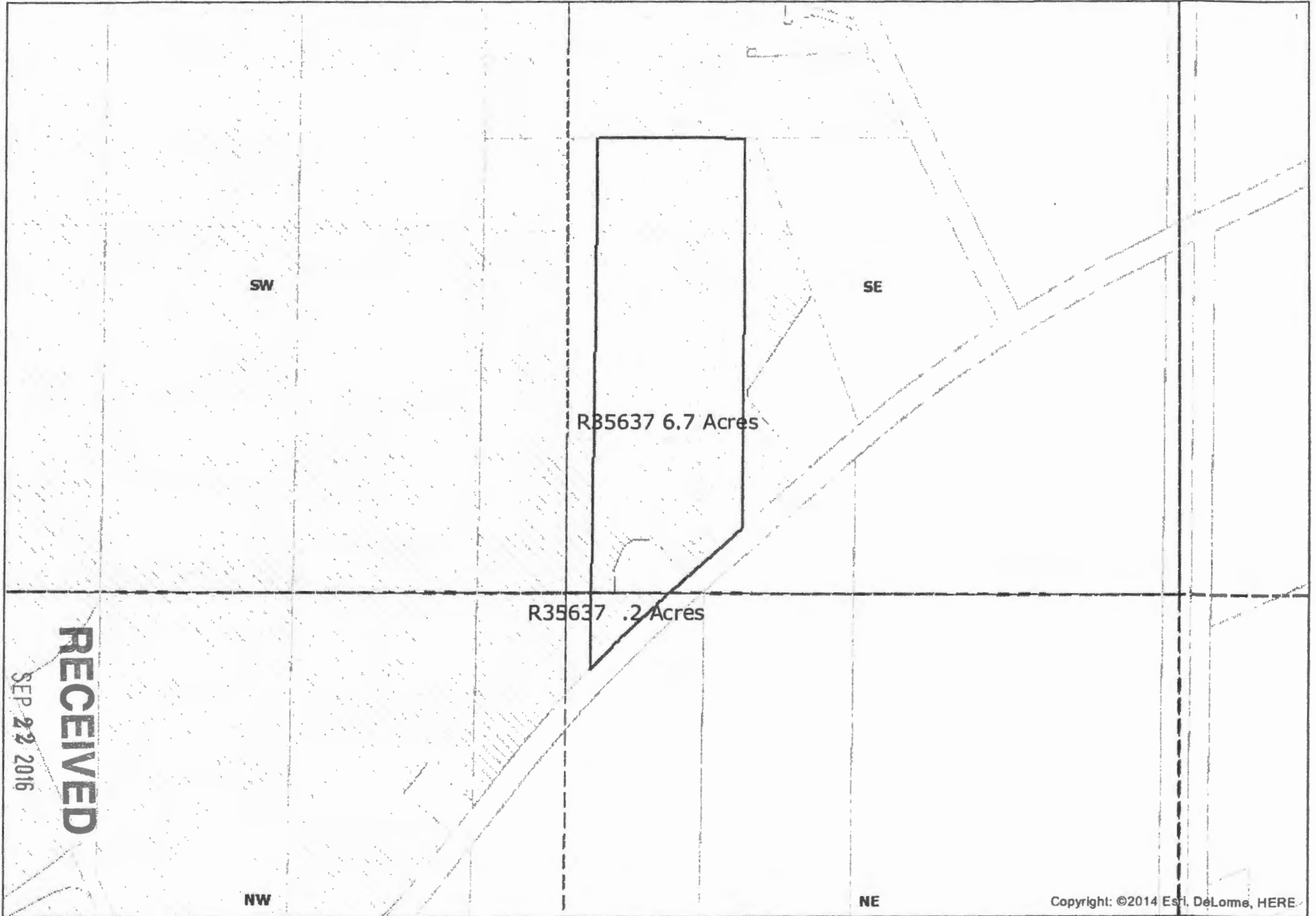
SEP 22 2016

WATER RESOURCES DEPT
SALEM, OREGON

Sources: Esri, HERE, DeLorme, Intermap, increment P Corp., GEBCO, USGS, FAO, NPS, NRCAN, GeoBase, IGN, Kadaster NL, Ordnance Survey, Esri Japan, METI, Esri China (Hong Kong), swisstopo, MapmyIndia, © OpenStreetMap contributors, and the GIS User Community. Source: Esri, DigitalGlobe, GeoEye, Earthstar Geographics, CNES/Airbus DS, USDA, USGS, AEX, Getmapping, Aerogrid, IGN, IGP, swisstopo, and the GIS User Community, Esri, HERE, DeLorme, MapmyIndia, © OpenStreetMap contributors, and the GIS user community

Richard & Laura Adair R35637 6.9 Acres 68665 Contract Exhibit A

6.7 68663
.2 68665



T 12485

WATER RESOURCES DEPT
SALEM, OREGON

RECEIVED
SEP 22 2016



Author: Tresa Peters
Organization: Santiam Water Control District

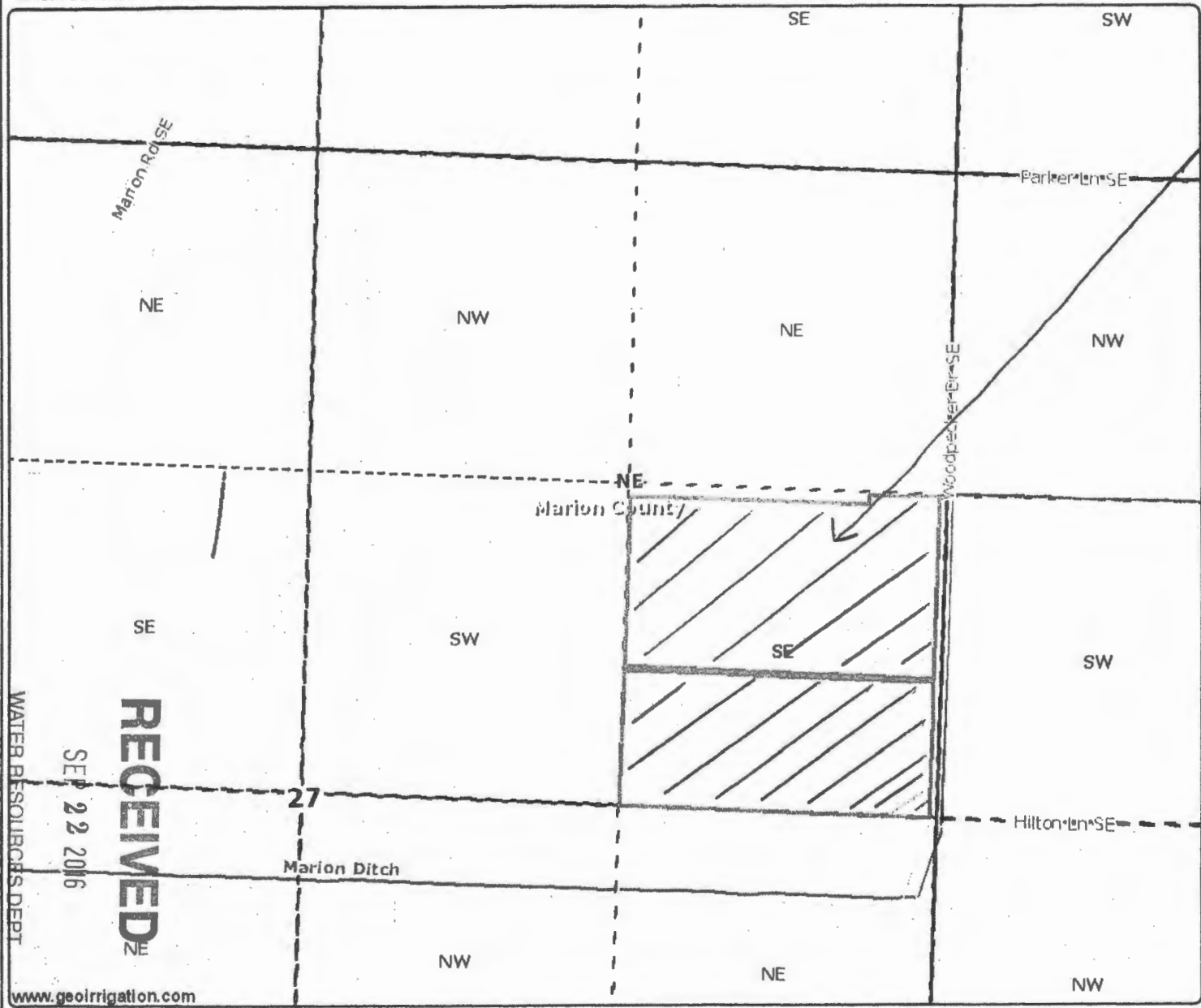


Date Created: March 28, 2014

Copyright: ©2014 Estl. DeLorme, HERE

Santiam Water Control District

**Transfer off Marion
Mitigation Bank R35714**
18-2011
37.8 acres 9S2W27SENE, Cert
68663 1909 092W2700500



- Cities
- ▭ District Boundary
- ▭ County Boundary
- Highway
- Interstate
- Road Labels
- ▭ Townships
- ▭ Sections
- Section Labels
- ▭ Quarters
- Quarter Labels
- ▭ Quarter Quarters
- Quarter Quarter Labels
- Taxlots
- ▭ Historical Taxlots
- Canal All
- POU District
- NHD Stream/River Area
- NHD Waterbodies

RECEIVED
 SEP 22 2016
 WATER RESOURCES DEPT
 SALEM, OREGON
 T 12485

www.geoirrigation.com
 Cert 68663 5/14/1909
 R35714 092W2700500

Scale 1" = 624'
 Created: 8/11/2011

DISCLAIMER: This map is intended for display purposes only and is not intended for any legal representations. There are no warranties, expressed or implied, that accompany this product.

Santiam Water Control District

Transfer off Kevin & Trish
Glidewell R35616



- Cities
- ▭ District Boundary
- ▭ County Boundary
- Highway
- Interstate
- Road Labels
- ▭ Townships
- ▭ Sections
- ▭ Section Labels
- ▭ Quarters
- ▭ Quarter Labels
- ▭ Quarter Quarters
- ▭ Quarter Quarter Labels
- ▭ Property Account Labels
- ▭ Taxlots
- Canal All
- ▭ Transfers Inhoate
- ▭ Transfers Off
- ▭ Transfers OWRD
- ▭ POU District
- ▭ NHD Stream/River Area
- ▭ NHD Waterbodies



Scale 1" = 200'
Created: 4/20/2012

1 12485

WATER RESOURCES DEPT
SALEM, OREGON

SEP 22 2016

RECEIVED

www.gcoair.com

DISCLAIMER: This map is intended for display purposes only and is not intended for any legal representations. There are no warranties, expressed or implied, that accompany this product.