

33 34

4 3

NW CORNER  
SEC. 3

1701'  
1425'

(Tax Lot 1500  
Map 15-10-03B)

NW NW  
POA 1

238'

6.42

371'

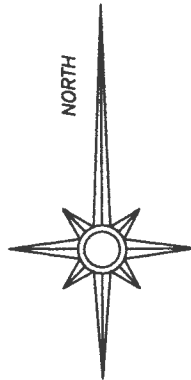
3.0

1.9

POA 2  
Tax Lot 1501  
Map 15-10-03B

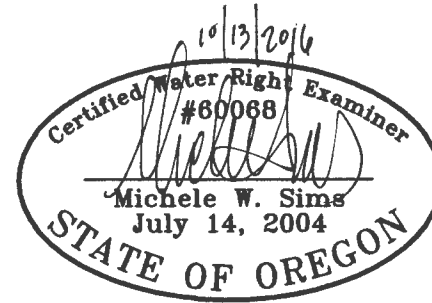
Section 3  
T15S, R10E, W.M.  
Deschutes Co. OR

SW NW



# Application Map Water Rights Transfer

## Certificate 89674



Renewal date: 6/30/2018

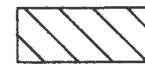
Changes to Cert. 89674, priority date  
12/17/1990:



Water to transfer on to POA 2



Water to remain on POA 1



Water moved to POA 2 under  
T-11754



Property line

400 0 400 800 1200



GRAPHIC SCALE - FEET

RECEIVED BY OWRU

OCT 17 2016

SALEM, OR

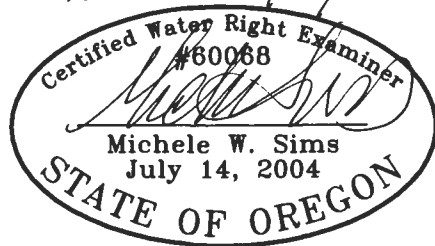
T 12509

Amended

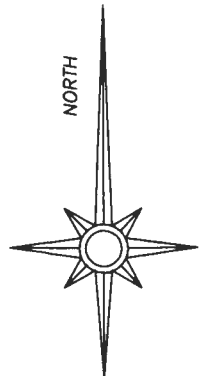
# Application Map Water Rights Transfer

Certificate 89674

*Revised 7/17/2017*



Renewal date: 6/30/2018



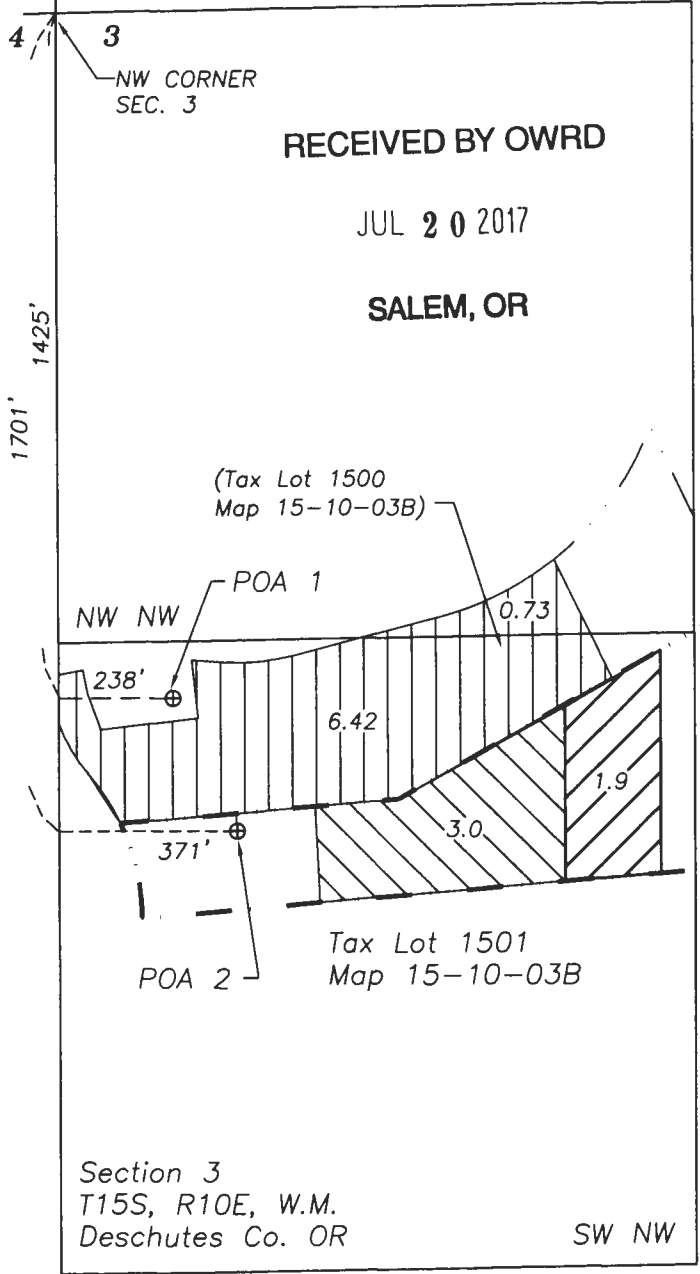
33 | 34

4 | 3  
NW CORNER  
SEC. 3




RECEIVED BY OWRD

JUL 20 2017

SALEM, OR



Changes to Cert. 89674, priority date  
12/17/1990:

-  Water to transfer on to POA 2
-  Water to remain on POA 1
-  Water moved to POA 2 under T-11754

Property line

