

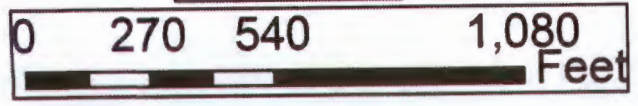
MFID-GLACIER RANCH
TRANSFER OFF: AUTHORIZED P.O.U
TAXLOTS: 800,701
1S10E_sect30 NENW,NWNW

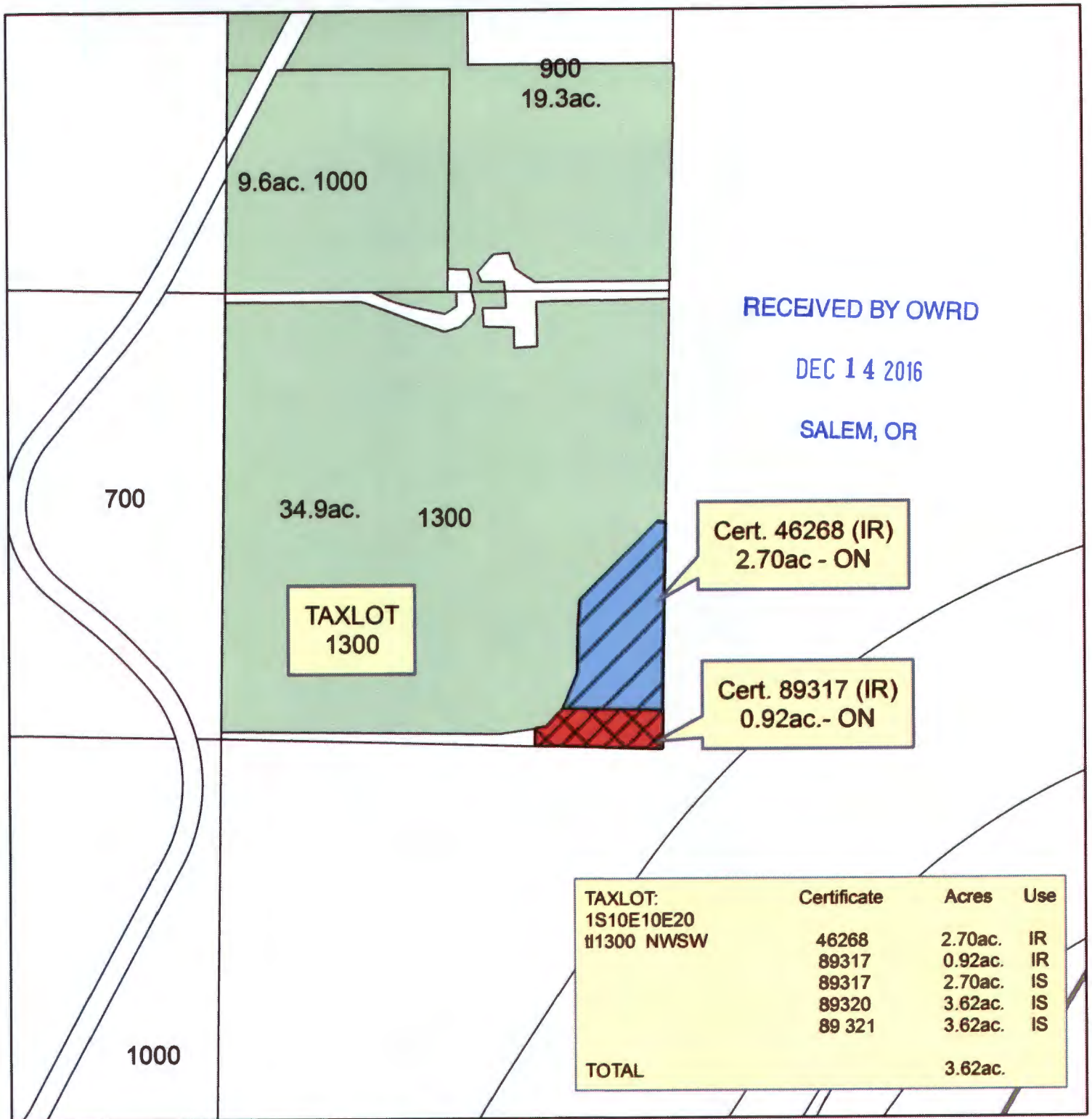


- Legend**
- HRCoParcels031516
 - Certificates 46268,89320,89321
 - C_89317
 - TRANSFER OFF 46268
 - TRANSFER OFF 89317

T 12537

1 inch = 400 feet



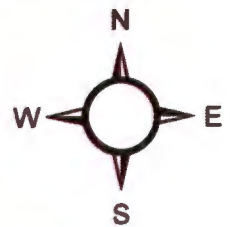


RECEIVED BY OWRD

DEC 14 2016

SALEM, OR

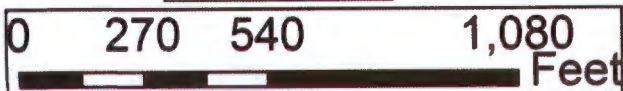
MFID-GLACIER RANCH
 TRANSFER ON: PROPOSED P.O.U
 TAXLOT: 1300
 1S10E_sect20 NWSW



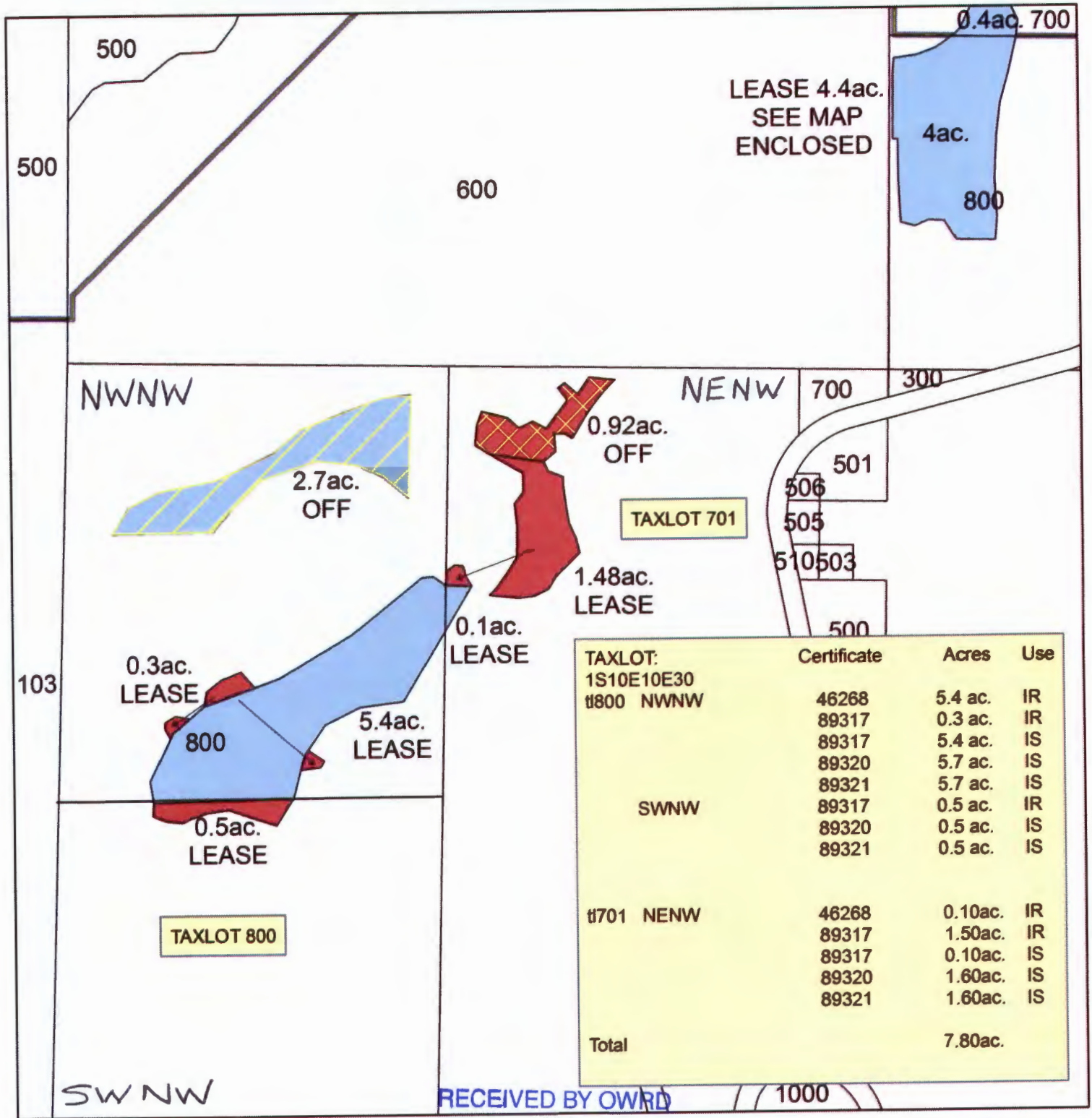
Legend

- Certificates 74264
- HRCoParcels031516
- TRANSFER ON 46268
- TRANSFER ON 89317

1 inch = 400 feet



T 12537



**GLACIER RANCH
INSTREAM LEASE
TAXLOTS: 800,701
1S10E_sect30 NENW,NWNW,SWNW**

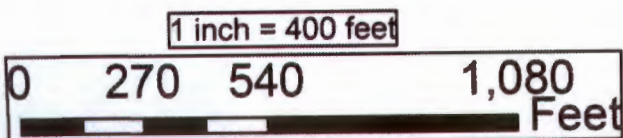
DEC 14 2016

SALEM, OR

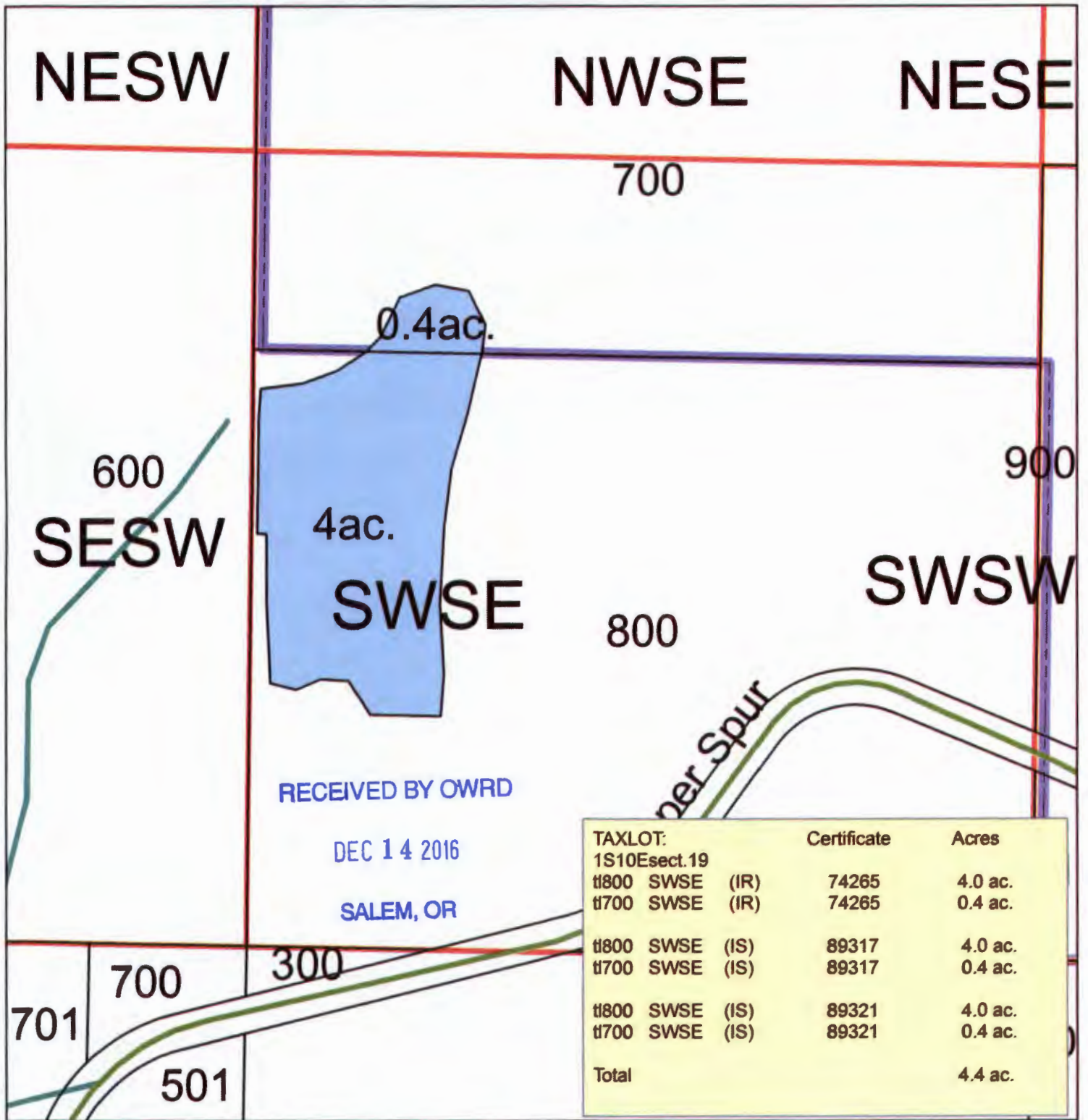


Legend

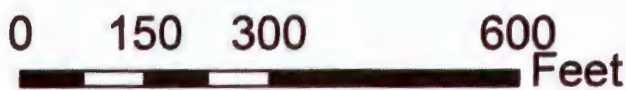
- HRCoParcels031516
- Certificates 46268,89320,89321
- C_89317
- TRANSFER OFF 46268
- TRANSFER OFF 89317



T 12537



GLACIER RANCH
 INSTREAM LEASE
 TAXLOTS: 800,701
 1S10Esect.19

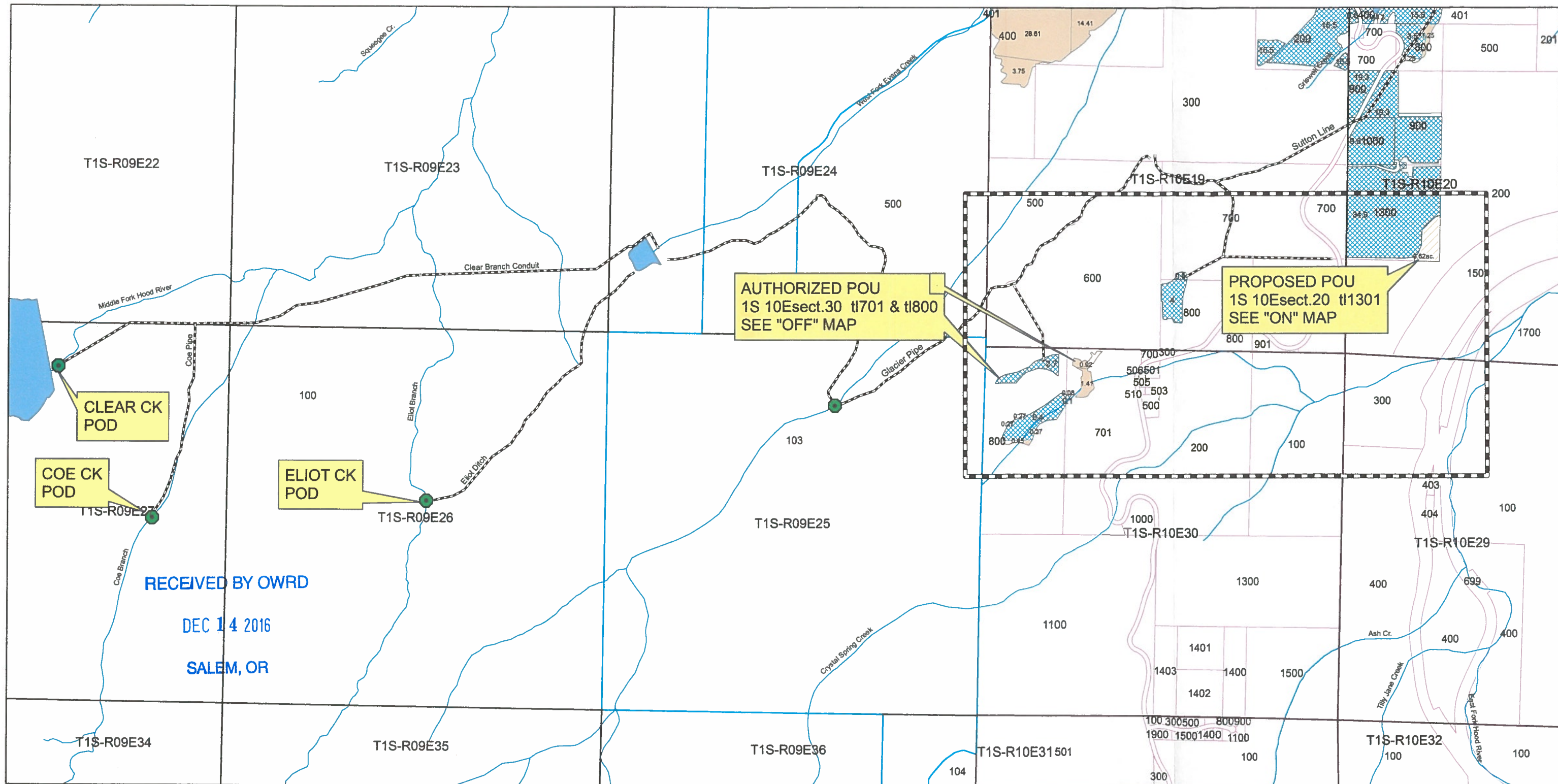


1:2,680

Legend

- Certificates
- HRCty_10_15_15
- QuarterPoly
- MFIDbound

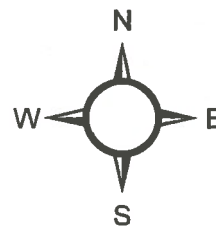
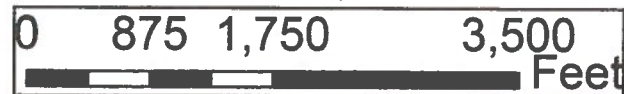
T 12537



POD DESCRIPTIONS:

CLEAR CK -520' SOUTH, 2500' WEST from NE CORNER SECTION 27
 COE CK - 2598' SOUTH, 945' WEST from NE CORNER SECTION 27
 ELIOT CK - 2400' SOUTH, 125' EAST from N1/4 CORNER SECTION 26

1 inch = 1,320 feet



**MIDDLEFORK IRRIGATION DISTRICT
 PERMANENT TRANSFER MAP**

Water Rights: 1S10Esect30 tl701 & tl800	CERTIFICATE	AC.	Primary/Suppl.	POD
	46268	2.7	P	CLEAR, ELIOT
	89317	0.92/2.7	P/S	CLEAR
	89320	3.62	S	ELIOT
	89321	3.62	S	COE

Legend

- POD
- Coe_Pipe
- Clear_Branch_Conduit
- C_89317
- HRCoParcels031516
- CERT. 46268, 74264