

**HOOD RIVER COUNTY  
SEC.15 T01N R10E  
SCALE - 1" = 400'**

RECEIVED BY OWRD

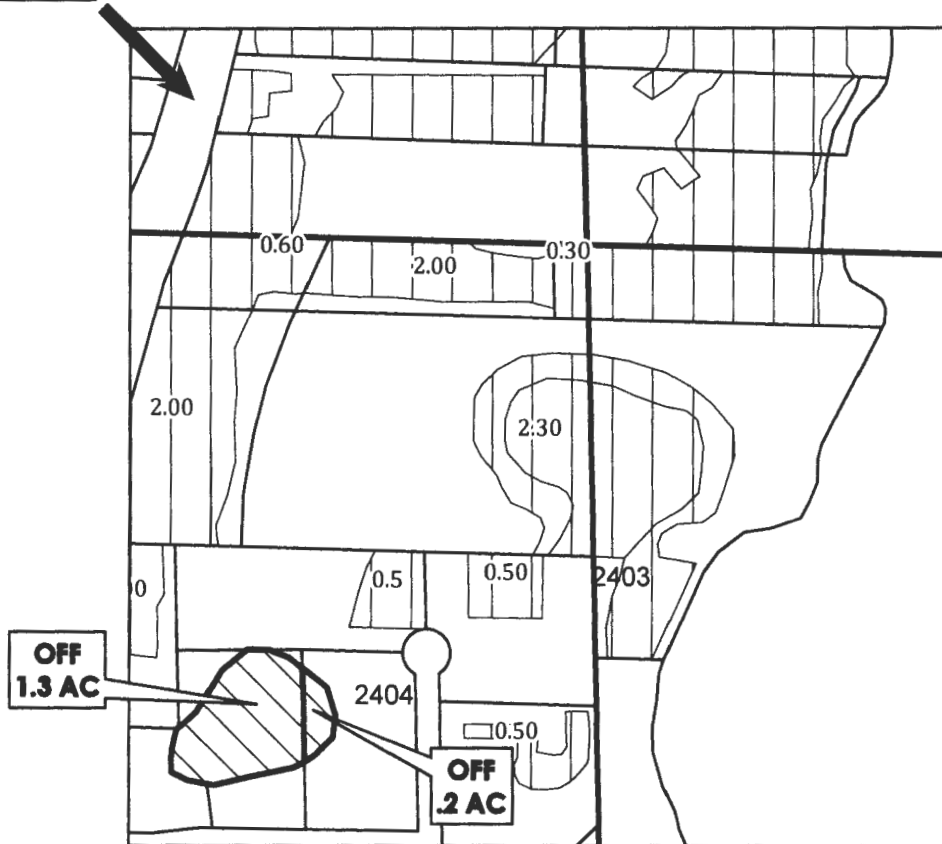
DEC 14 2016

SALEM, OR



**NW 1/4 OF THE SE 1/4**

**C 1/4 COR**



Cert 92000 (81340) 10.50 Ac  
Cert 84803 1.70 Ac

	EXISTING WATER RIGHTS
	OFF LANDS
	ON LANDS

**"OFF" MAP**

**APPLICATION FOR WATER RIGHTS TRANSFER  
FROM: PERKINS/BETZING, LEIBLEIN / TO: PERKINS/BETZING, LEIBLEIN  
TAXLOT #: 2403, 2404 1.50 ACRES**

HOOD RIVER COUNTY  
SEC.15 T01N R10E  
SCALE - 1" = 400'

RECEIVED BY OWRD

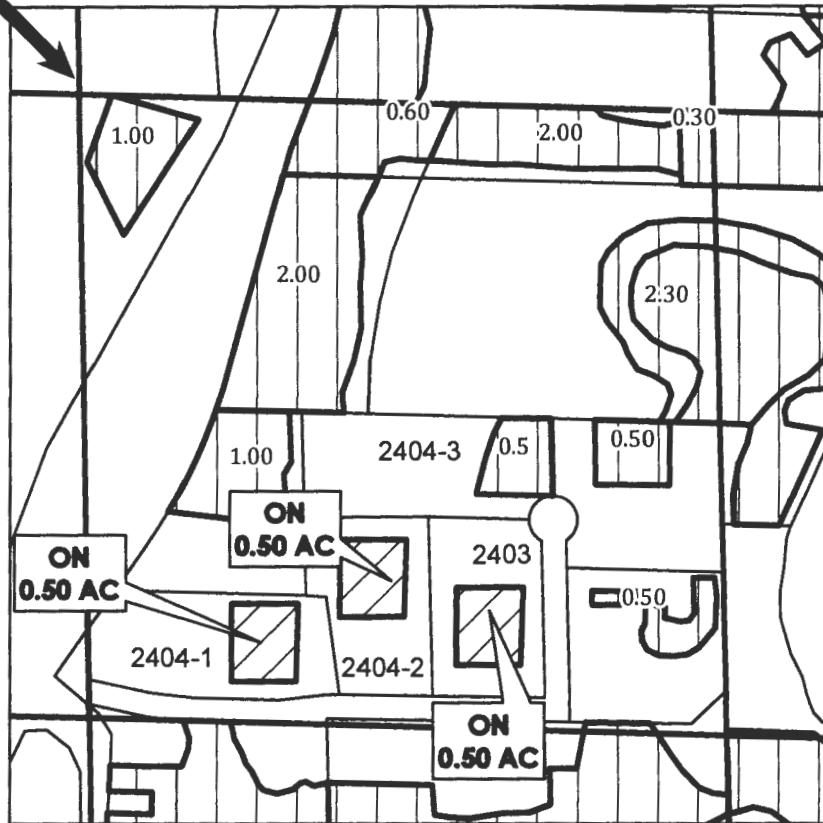
DEC 14 2016

SALEM, OR



NW 1/4 OF THE SE 1/4

C 1/4 COR



Cert 92000 (81340) 10.50 Ac  
Cert 84803 1.70 Ac

"ON" MAP

	EXISTING WATER RIGHTS
	OFF LANDS
	ON LANDS

APPLICATION FOR WATER RIGHTS TRANSFER

FROM: PERKINS/BETZING, LEIBLEIN / TO: PERKINS/BETZING, LEIBLEIN

TAXLOT #: 2403, 2404

1.50 ACRES