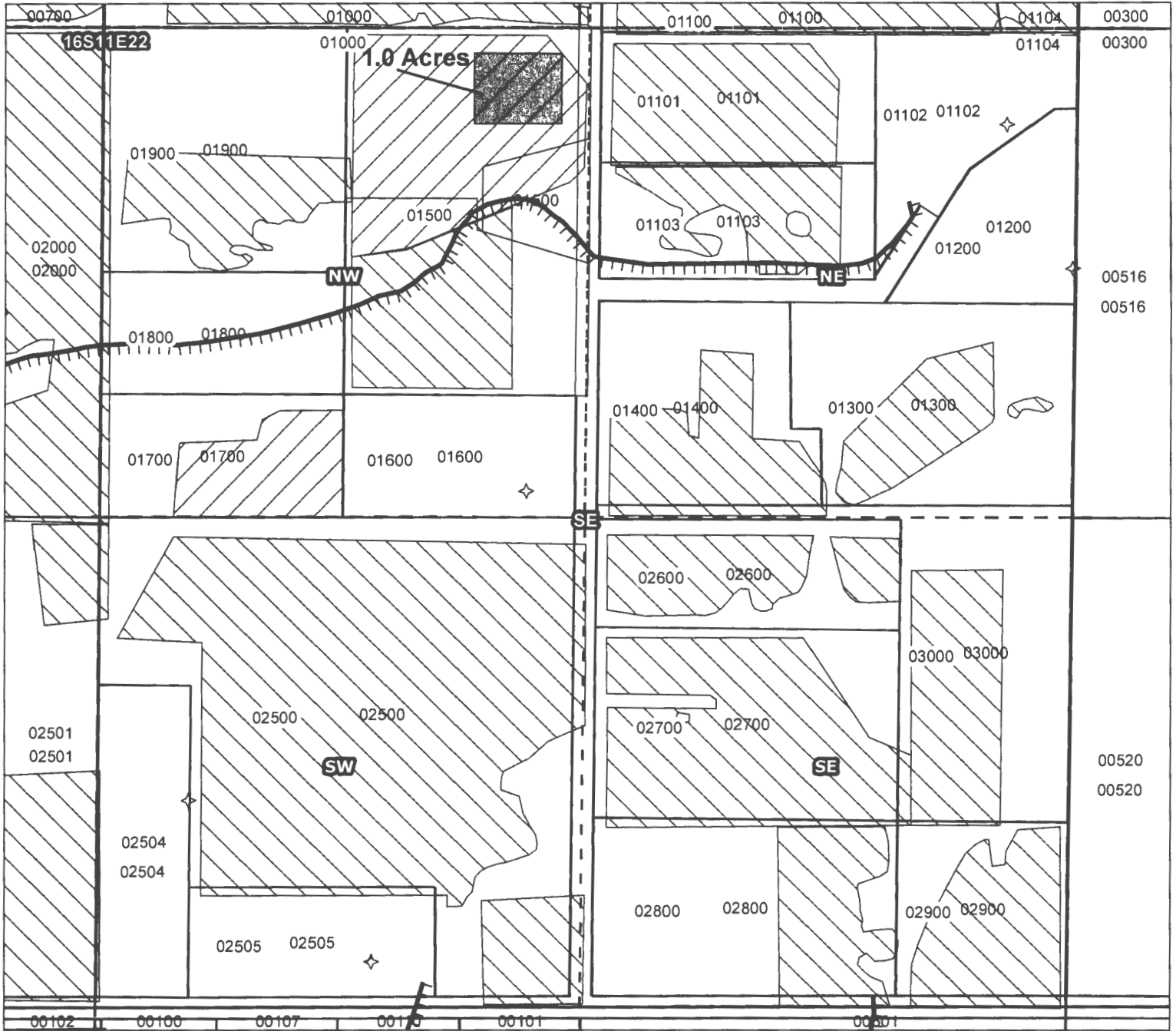
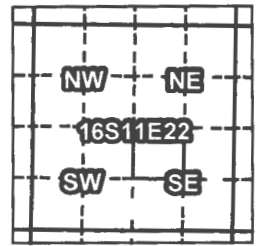


# Tumalo Irrigation District

## 2016 District Transfer Application "Off" Map

**Certificates: 76106 (IR)**  
for Kowalski, Kenneth L. & Kathy O.



Taxlot 1501, 16S11E22NWSE: 1.0 ac. Off (Cert# 76106)

RECEIVED BY OWRD

DEC 29 2016

SALEM, OR 12548

- Canals
- Taxlots
- Rights to Transfer
- Cert 74146, 74147
- Cert 76106
- All Other Certs



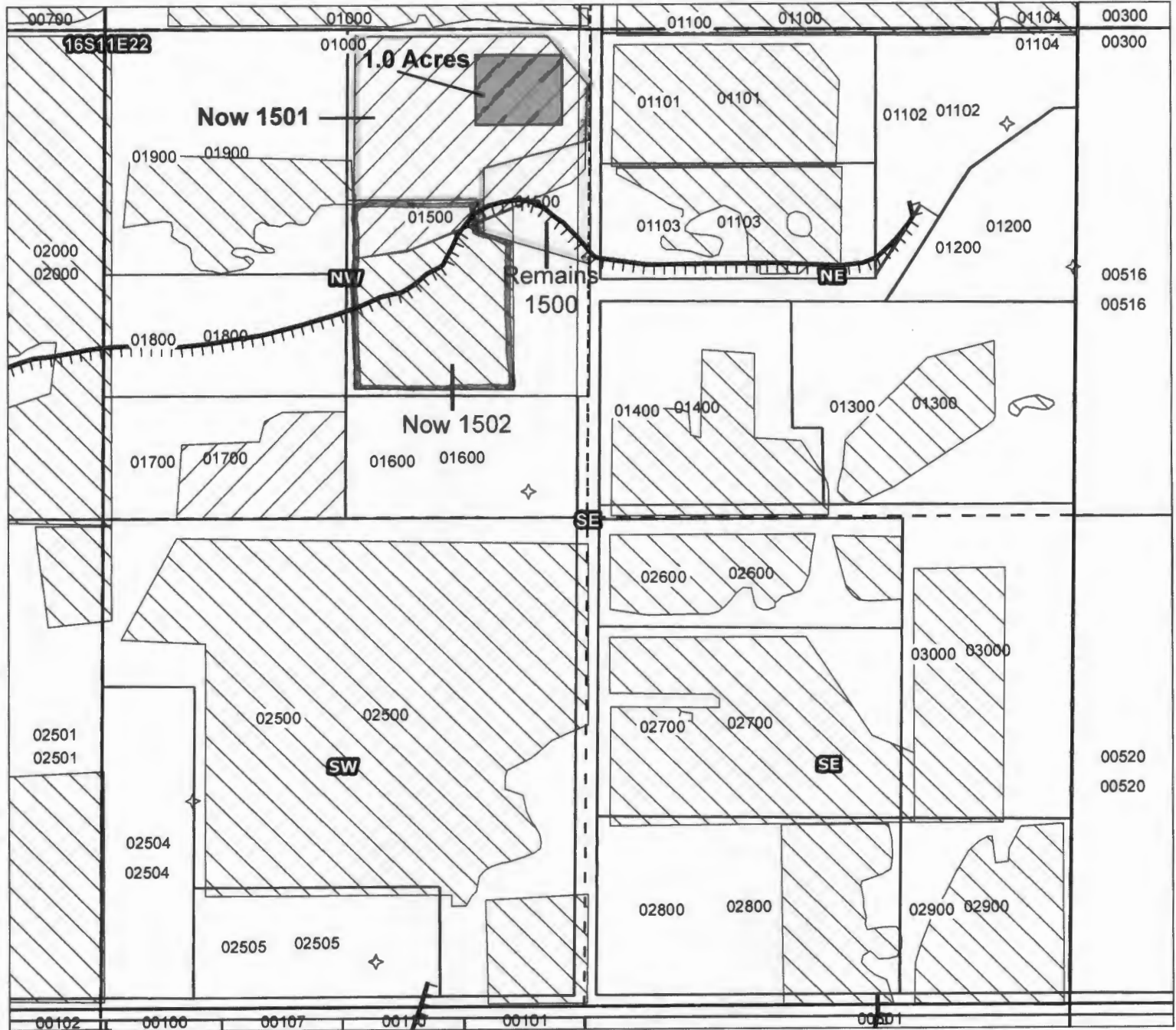
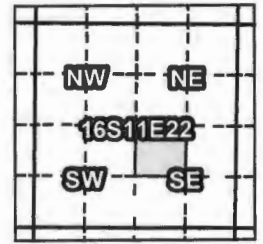
1 inch = 400 feet

Prepared by FireWhat Inc. | November 2016

# Tumalo Irrigation District

## 2016 District Transfer Application "Off" Map

**Certificates: 76106 (IR)**  
for Kowalski, Kenneth L. & Kathy O.



Taxlot 1501, 16S11E22NWSE: 1.0 ac. Off (Cert# 76106)

**Note: Lot 1501 partitioned from lot 1500, Deschutes County PP 2015-23**

**Remaining water rights per lot:**

**1501 - 4.72 acres**

**1502 - 4.65 acres**

**1500 - 0.63 acres**

**RECEIVED BY OWRD**

DEC 29 2016 T 12548

**SALEM, OR**

- Canals
- Taxlots
- Rights to Transfer
- Cert 74146, 74147
- Cert 76106
- All Other Certs



1 inch = 400 feet

Prepared by FireWhat Inc. | November 2016

**PARTITION PLAT No. PP 2015-23**

**DESCHUTES COUNTY COMMUNITY DEVELOPMENT**  
**FILE NUMBERS: 247-15-000105-AD**  
**247-15-000106-MP**

**LOCATED IN THE NW 1/4 OF THE SE 1/4,**  
**SECTION 22, T.16S., R.11E., W.M.,**  
**DESCHUTES COUNTY, OREGON**

**LEGEND**

- SET 5/8" IRON ROD WITH "BAXTER SURVEYING" YELLOW PLASTIC CAP
- FOUND 5/8" IRON ROD WITH YELLOW PLASTIC CAP MARKED "PLS 1020" UNLESS NOTED OTHERWISE
- (M) MEASURED DIMENSIONS
- (R1) RECORD DIMENSIONS PER SURVEY BY TODD NEARY, FILED 12/19/95 AS CS12428
- (R2) RECORD DIMENSIONS PER SURVEY BY GEORGE COLVIN, FILED 03/18/83 AS CS01545
- (R3) RECORD DIMENSIONS PER SURVEY BY EDGAR GRAVES, FILED 01/09/79 AS CS01549
- (D) RECORD DIMENSIONS PER DEED NO. 2009-04004

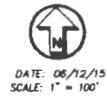
T.I.D. EASEMENT CURVE TABLE				
CURVE	DELTA	LENGTH	RADIUS	CHORD
C1	31°15'44"	54.56	100.00	N45°06'02"E 53.89
C2	37°27'57"	98.09	150.00	N58°49'54"E 96.35
C3	32°06'35"	56.05	100.00	S86°22'39"E 55.32
C4	24°28'39"	39.17	100.00	S11°15'20"E 38.92
C5	22°46'22"	39.75	100.00	N49°20'42"E 39.49
C6	08°29'22"	14.82	100.00	N33°42'50"E 14.80

RECEIVED BY OWRD

DEC 29 2016

SALEM, OR

REGISTERED PROFESSIONAL LAND SURVEYOR  
*James D. Perry*  
 OREGON  
 JUL 26 1980  
 JAMES D. PERRY  
 2407  
 RENEWS 12-31-2016



DATE: 06/12/15  
 SCALE: 1" = 100'

TAX LOT 16112200-01000

N89°49'10"W 1318.11' (R3)  
 S89°48'10"E 1318.11' (R2)  
 S89°49'10"E 1318.09' (R1)  
 S89°46'17"E 1318.10' (M)

TAX LOT 16112200-01100

TAX LOT 16112200-01101

TAX LOT 16112200-01103

TAX LOT 16112200-01400

TAX LOT 16112200-01900

TAX LOT 16112200-01800

TAX LOT 16112200-01700

**PANCREL 2**  
 4.16 ACRES  
 6.72 ACRES WATER RIGHTS

**PANCREL 1**  
 1.89 ACRES  
 0.63 ACRES WATER RIGHTS

**PANCREL 3**  
 7.14 ACRES  
 4.06 ACRES WATER RIGHTS

C 1/4 SEC. 22  
 PER CS01545

CE1/16 COR.  
 PER CS01545  
 INITIAL POINT

PROPERTY CORNER IS  
 12.7' WEST OF N-S WIRE FENCE,  
 26.6' SOUTH OF E-W WIRE FENCE

POWER POLE (SEE  
 "EASEMENTS OF RECORD"  
 ON SHEET 1)

5/8" IRON ROD, NO CAP,  
 IN GRAY ROAD, BENT,  
 NOT HELD FOR EASTING

EXISTING T.I.D. CANAL LATERAL  
 CENTERLINE T.I.D. EASEMENT  
 (EASEMENT TO BE 30' EACH SIDE  
 OF MARGINAL LIMITS, PER T.I.D.)  
 CREATED BY THIS PARTITION

C.A. EASEMENT  
 S22°28'39"E  
 229.21'

15' T.I.D. EASEMENT  
 TO BENEFIT TAX LOT  
 16112200-01600  
 CREATED BY THIS PARTITION

C.A. EASEMENT  
 SOUTH  
 94.94'

30' ROADWAY EASEMENT PER  
 DEED 2009-04004

GRAVEL DRIVE

5/8" IRON ROD W/  
 NEARBY PLS 2384  
 YELLOW PLASTIC CAP  
 (R1)

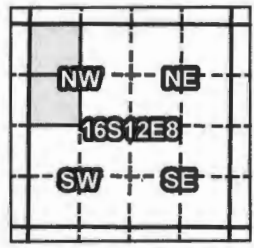
N89°50'30"W 657.99' (M)  
 N89°53'19"W 658.15' (R1)

CE1/16 COR.  
 5/8" IRON ROD (R1)  
 DAMAGED CAP

T 12548

# Tumalo Irrigation District 2016 District Transfer Application "On" Map

**Certificates: 74146 (IR)**  
for Fred, Ryan & Debbie



Taxlot 500, 16S12E8NWNW: 0.25 ac. On (Cert# 74146 "formerly 76106, CW-9")  
Taxlot 500, 16S12E8SWNW: 0.75 ac. On (Cert# 74146 "formerly 76106, CW-9")

-  Canals
-  Taxlots
-  Rights to Transfer
-  Cert 74146, 74147
-  All Other Certs

RECEIVED BY OWRD

DEC 29 2016

SALEM, OR

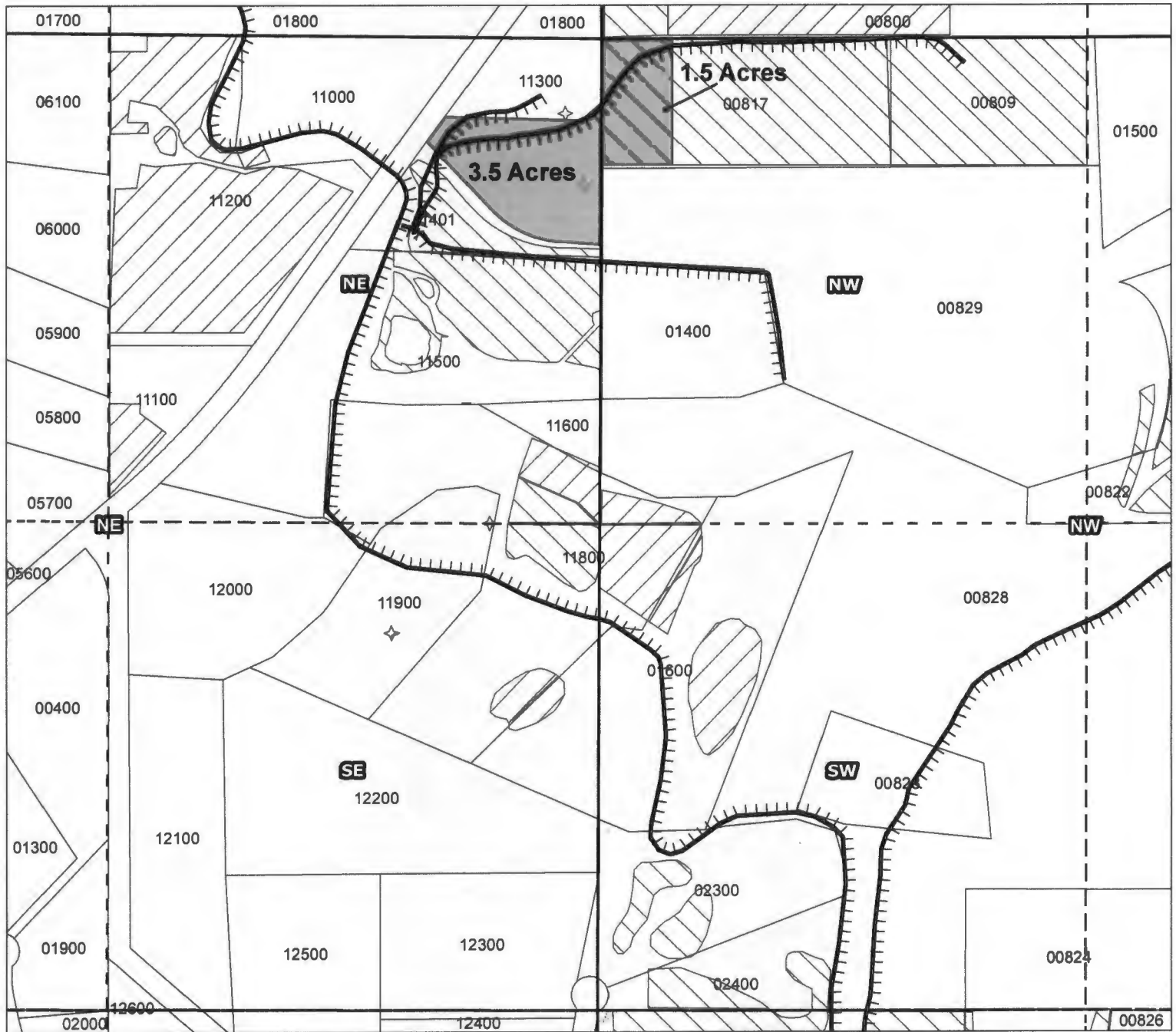
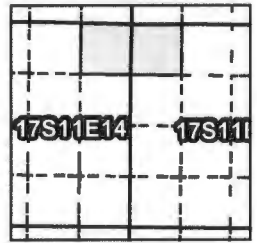
12548



1 inch = 400 feet

# Tumalo Irrigation District 2016 District Transfer Application "Off" Map

**Certificates: 74146 (IR), 74147 (IR)**  
for KC Development Group



Taxlot 817, 17S11E13NWNW: 1.50 ac. Off, (Cert# 74146)  
Taxlot 817, 17S11E14NENE: 3.50 ac. Off, (Cert# 74147)

RECEIVED BY OWRD

DEC 29 2016

SALEM, OR

12548

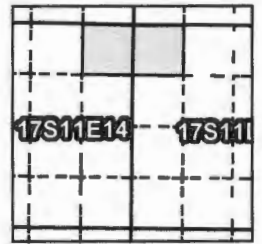
-  Canals
-  Taxlots
-  Rights to Transfer
-  Cert 74146, 74147
-  Cert 76106
-  All Other Certs



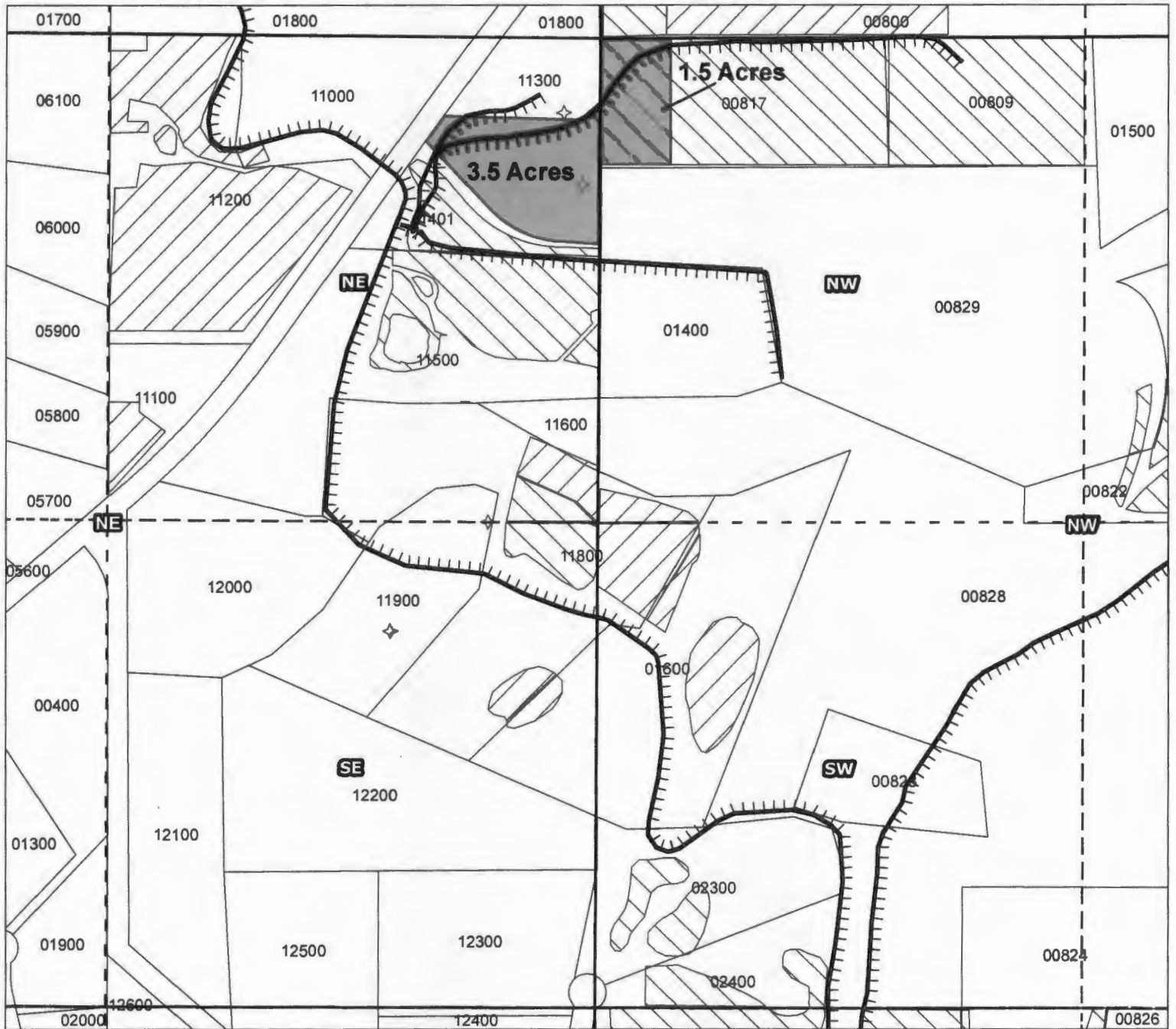
1 inch = 400 feet

# Tumalo Irrigation District

## 2016 District Transfer Application "Off" Map



**Certificates: 74146 (IR), 74147 (IR)**  
for KC Development Group



Taxlot 817, 17S11E13NWNW: 1.50 ac. Off, (Cert# 74146)  
 Taxlot 817, 17S11E14NENE: 3.50 ac. Off, (Cert# 74147)- currently not mapped

Note: Lot line adjustment between lots 809 and 817, Deschutes County LL 98-78.  
 Water rights remaining per lot:  
 817 - 3.99 acres (after transfer and lot line adjustment)  
 809 - 4.47 acres

**RECEIVED BY OWRD**

- Canals
- Taxlots
- Rights to Transfer
- Cert 74146, 74147
- Cert 76106
- All Other Certs



T 12548

DEC 29 2016

SALEM, OR

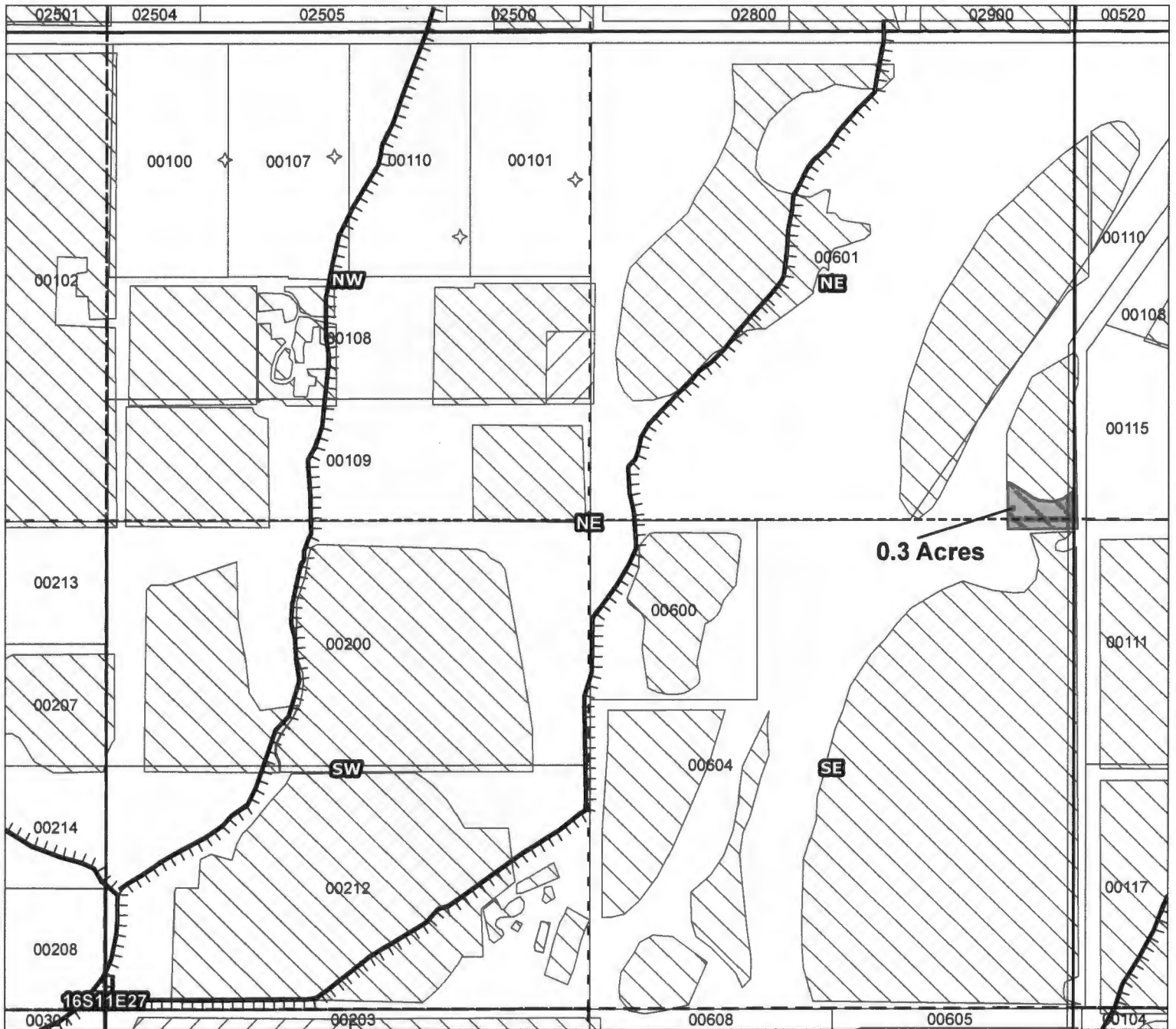
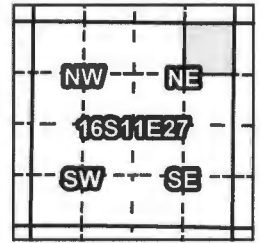
1 inch = 400 feet

Prepared by FireWhat Inc. | November 2016



# Tumalo Irrigation District 2016 District Transfer Application "Off" Map

Certificates: 74146 (IR)  
for Stuermer, Jeffery & Amanda



Taxlot 604, 16S11E27NENE: 0.3 ac. Off (Cert# 74146)

RECEIVED BY OWRD

DEC 29 2016

SALEM, OR

T 12548

- Canals
- Taxlots
- Rights to Transfer
- Cert 74146, 74147
- Cert 76106
- All Other Certs

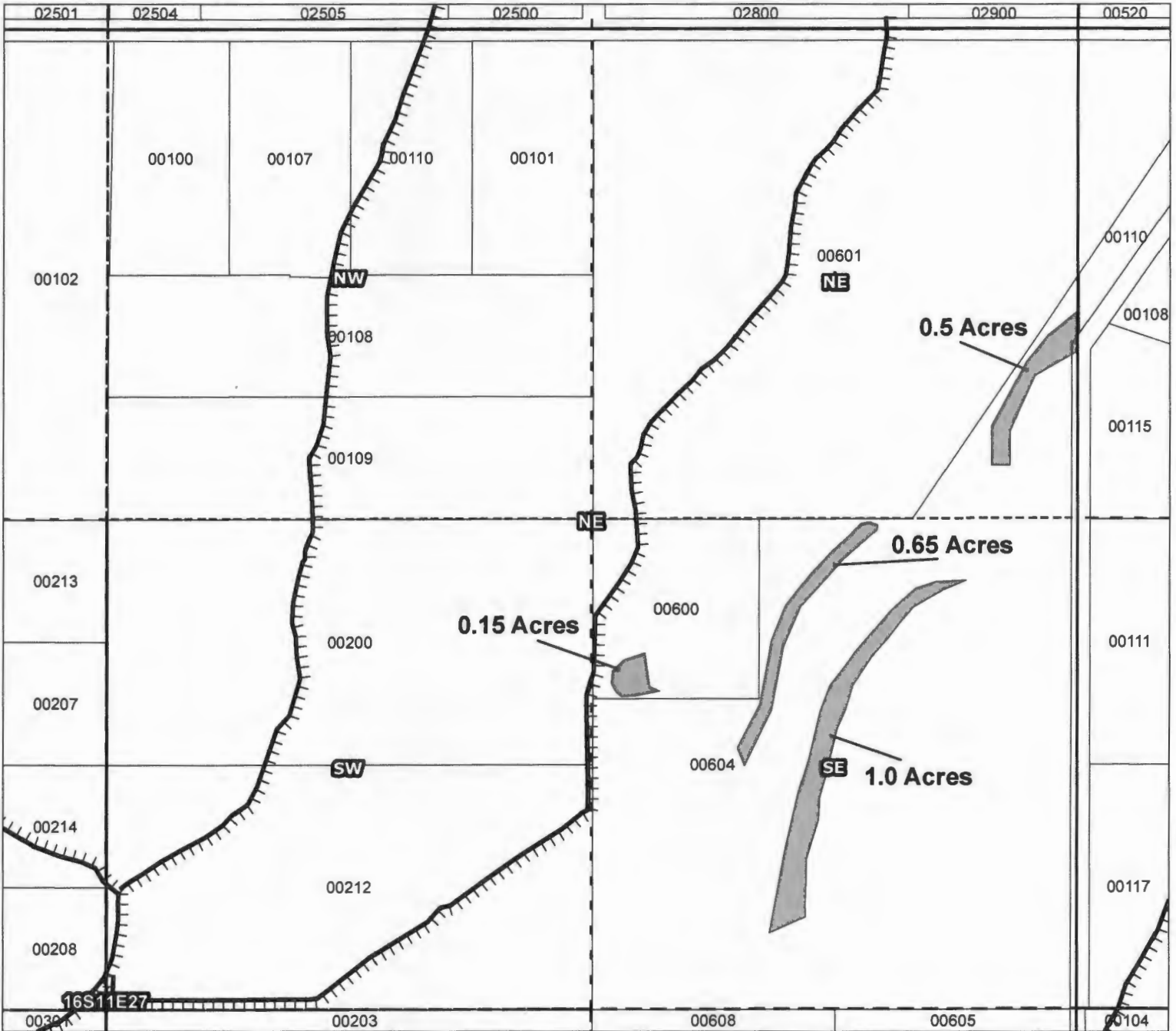
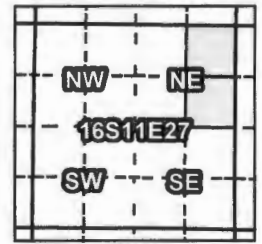


1 inch = 400 feet

Prepared by FireWhat Inc. | November 2016

# Tumalo Irrigation District 2016 District Transfer Application "On" Map

Certificates: 74146 (IR) 74147 (IR)  
for Stuermer, Jeffrey & Amanda



Taxlot 604, 16S11E27NENE: 0.5 ac. On (Cert# 74147)  
Taxlot 604, 16S11E27SENE: 1.0 ac. On (Cert# 74146)  
Taxlot 604, 16S11E27SENE: 0.65 ac. On (Cert# 74146)  
Taxlot 600, 16S11E27SENE: 0.15 ac. On (Cert# 74146)

RECEIVED BY OWRD

DEC 29 2016

SALEM, OR

- Canals
- Taxlots
- Rights to Transfer
- Cert 74146, 74147
- All Other Certs

T 12548



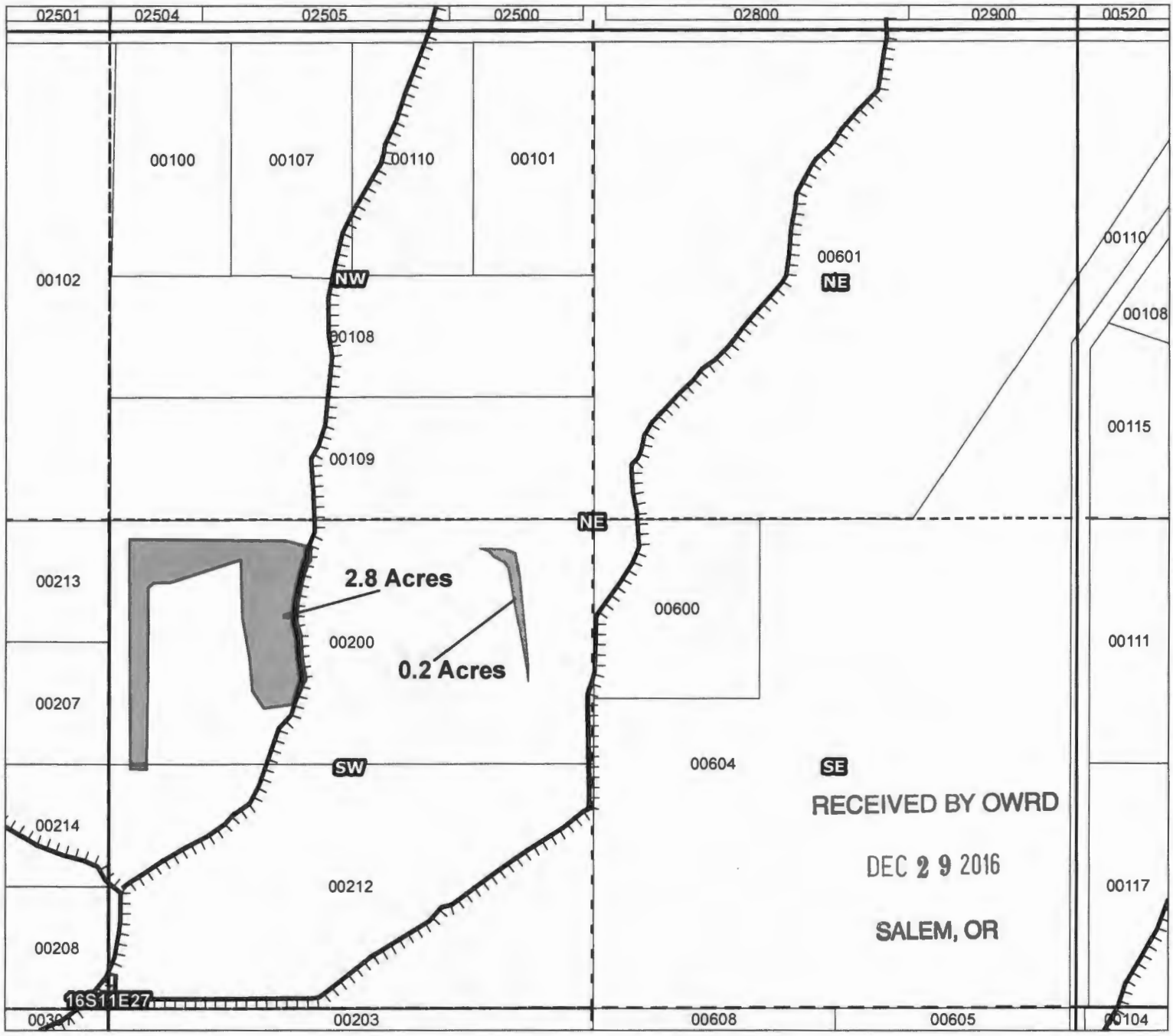
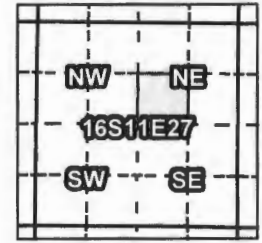
1 inch = 400 feet



# Tumalo Irrigation District

## 2016 District Transfer Application "On" Map

Certificates: 74147 (IR)  
for Wheir, William & Julie



Taxlot 200, 16S11E27SWNE: 3.0 ac. On (Cert# 74147)

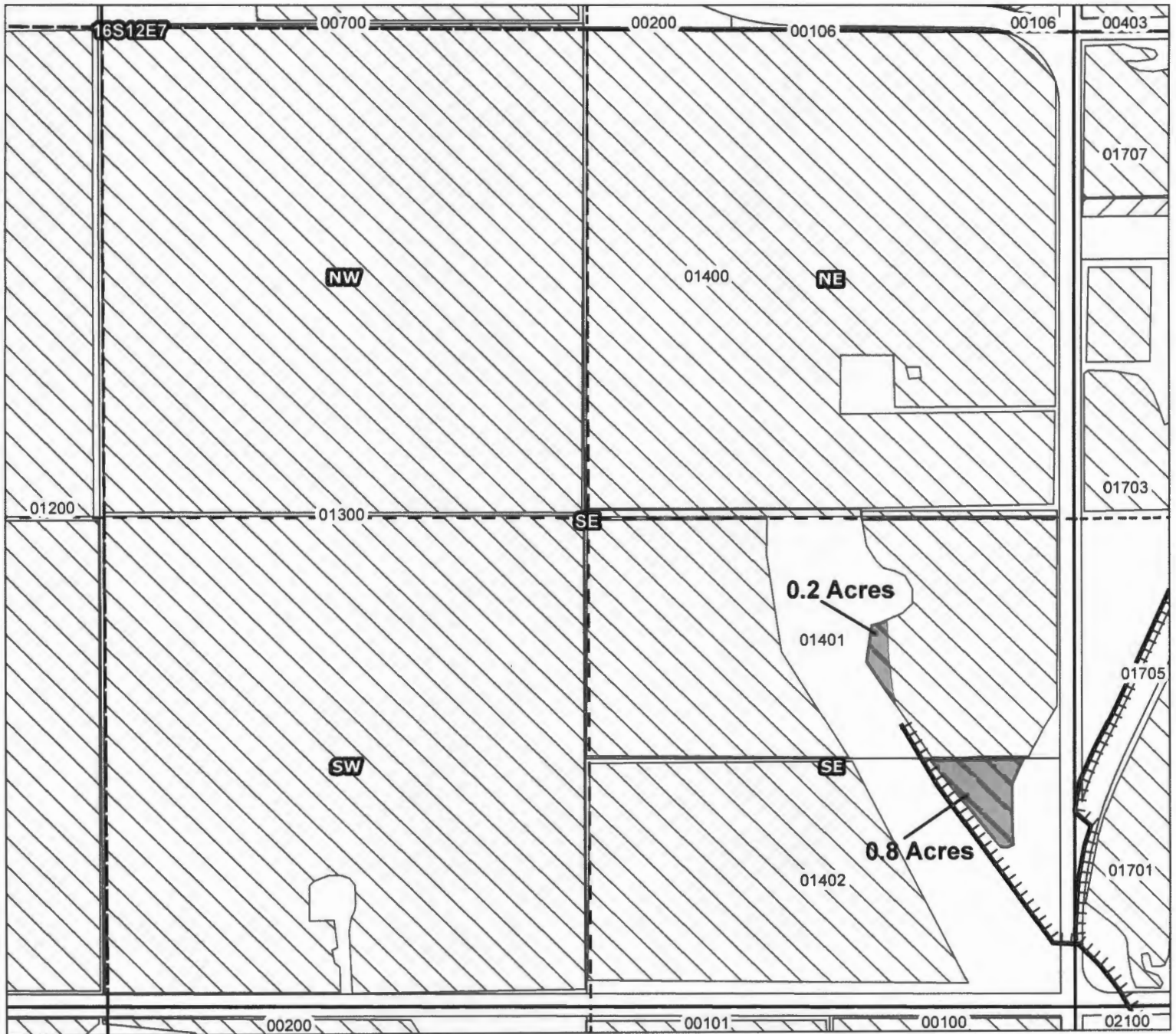
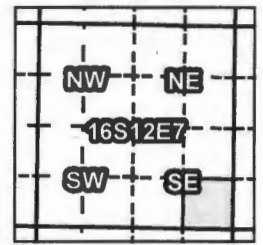
-  Canals
  -  Taxlots
  -  Rights to Transfer
  -  Cert 74146, 74147
  -  All Other Certs
- T 12548**



1 inch = 400 feet

# Tumalo Irrigation District 2016 District Transfer Application "Off" Map

Certificates: 74147 (IR)  
for Schutt/Tuten Family Trust



Taxlot 1401, 16S12E7SESE: 0.2 ac. Off (Cert# 74147)  
Taxlot 1402, 16S12E7SESE: 0.8 ac. Off (Cert# 74147)

- Canals
- Taxlots
- Rights to Transfer
- Cert 74146, 74147
- Cert 76106
- All Other Certs

RECEIVED BY OWRD

DEC 29 2016

SALEM, OR

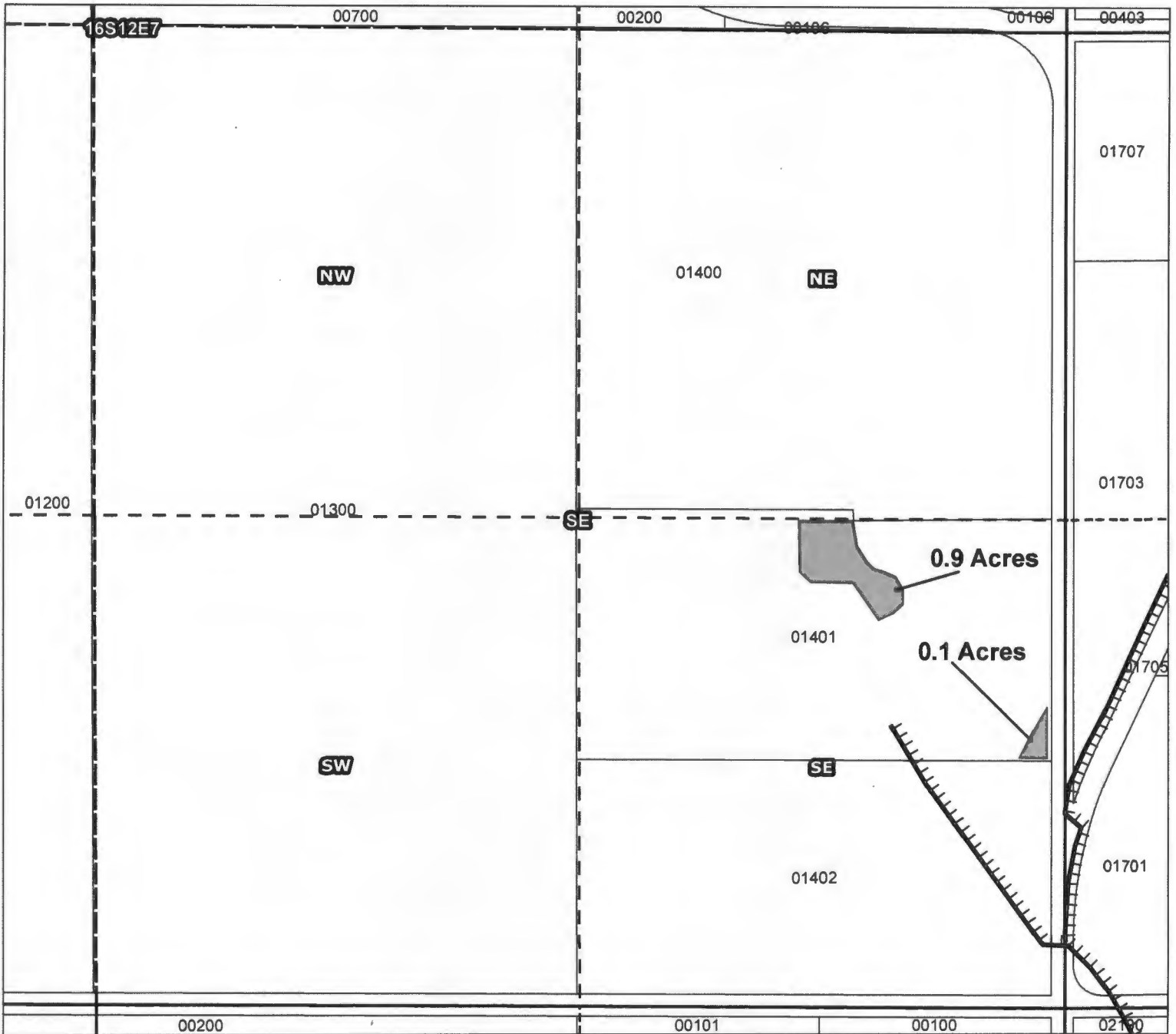
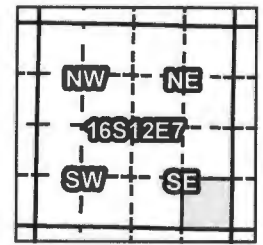
12548



1 inch = 400 feet

# Tumalo Irrigation District 2016 District Transfer Application "On" Map

Certificates: 74147 (IR)  
for Schutt/Tuten Family Trust



Taxlot 1401, 16S12E7SESE: 1.0 ac. On (Cert# 74147)

RECEIVED BY OWRD

DEC 29 2016

SALEM, OR

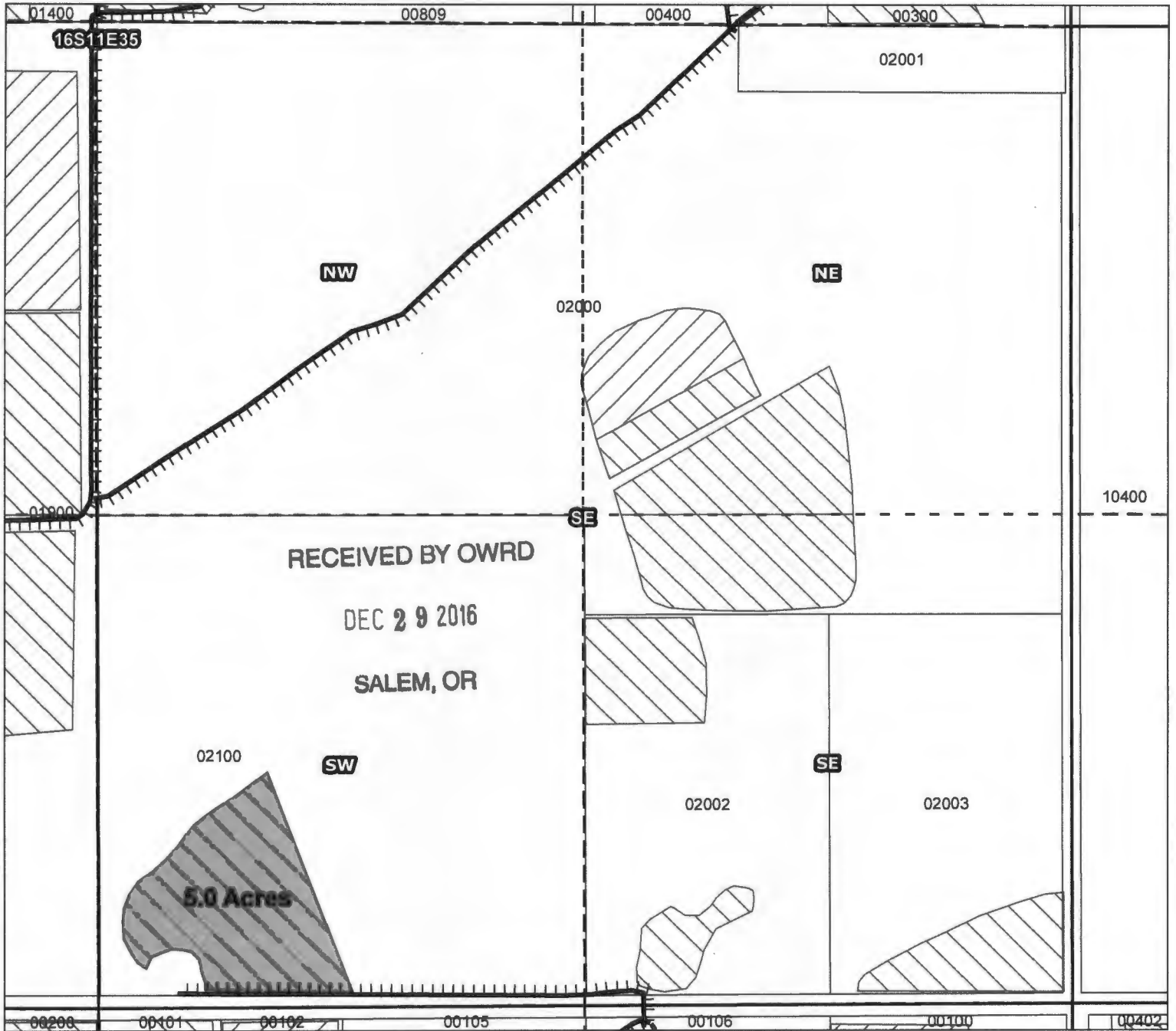
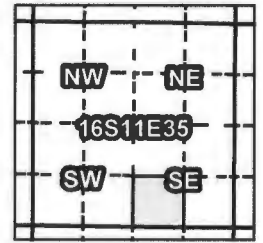
-  Canals
  -  Taxlots
  -  Rights to Transfer
  -  Cert 74146, 74147
  -  All Other Certs
- T 12548



1 inch = 400 feet

# Tumalo Irrigation District 2016 District Transfer Application "Off" Map

Certificates: 74146 (IR)  
for Murri Family Trust



Taxlot 2100, 16S11E35SWSE: 5.0 ac. Off (Cert# 74146)

- Canals
- Taxlots
- Rights to Transfer
- Cert 74146, 74147
- Cert 76106
- All Other Certs

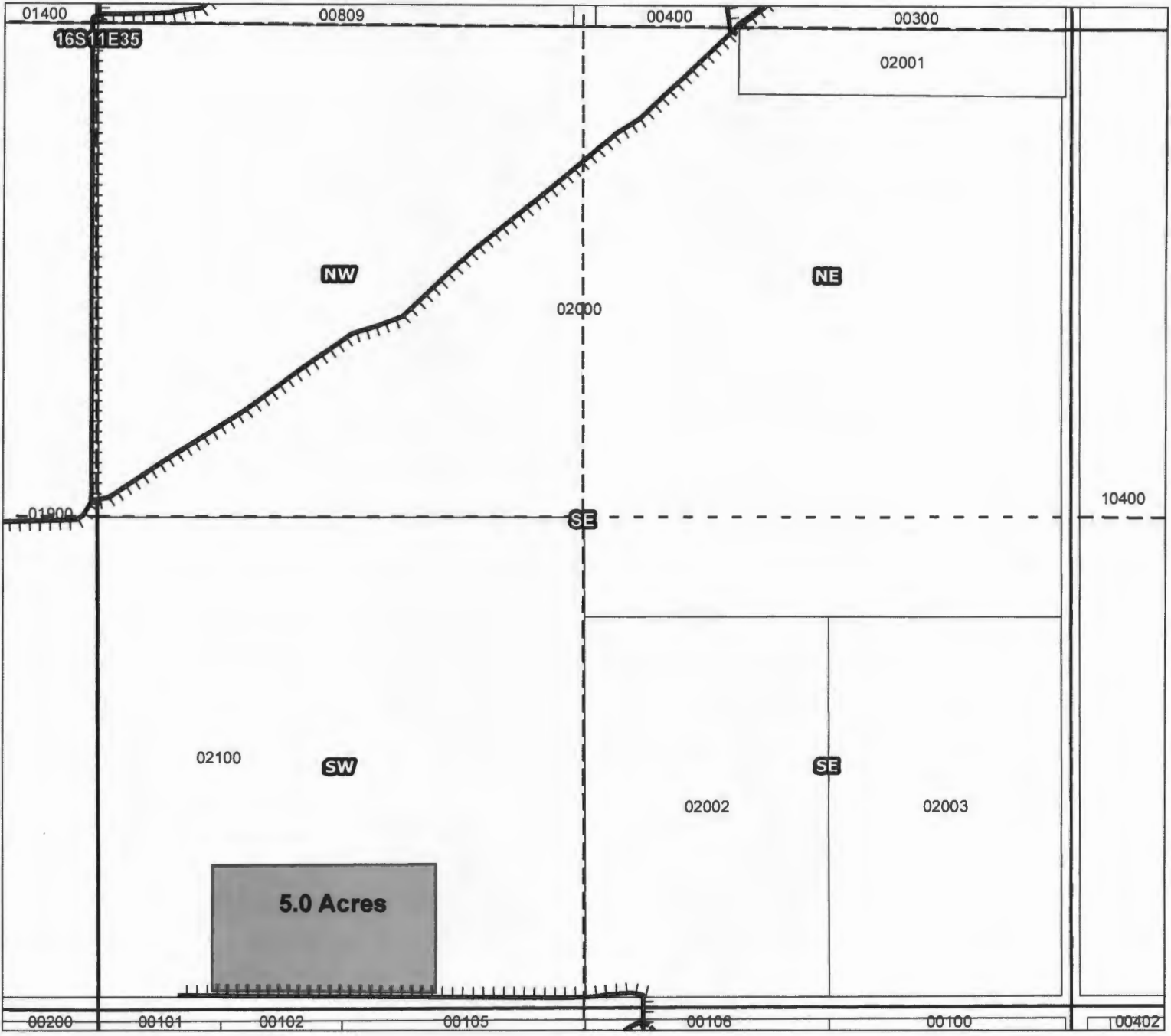
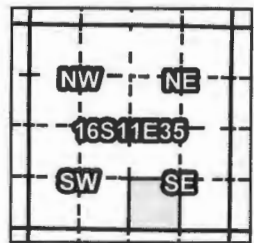
12548



1 inch = 400 feet

# Tumalo Irrigation District 2016 District Transfer Application "On" Map

**Certificates: 74146 (IR)**  
for Murri Family Trust



Taxlot 2100, 16S11E35SWSE: 5.0 ac. On (Cert# 74146)

RECEIVED BY OWRD

DEC 29 2016

SALEM, OR

- Canals
- Taxlots
- Rights to Transfer
- Cert 74146, 74147
- All Other Certs

T 12548



1 inch = 400 feet

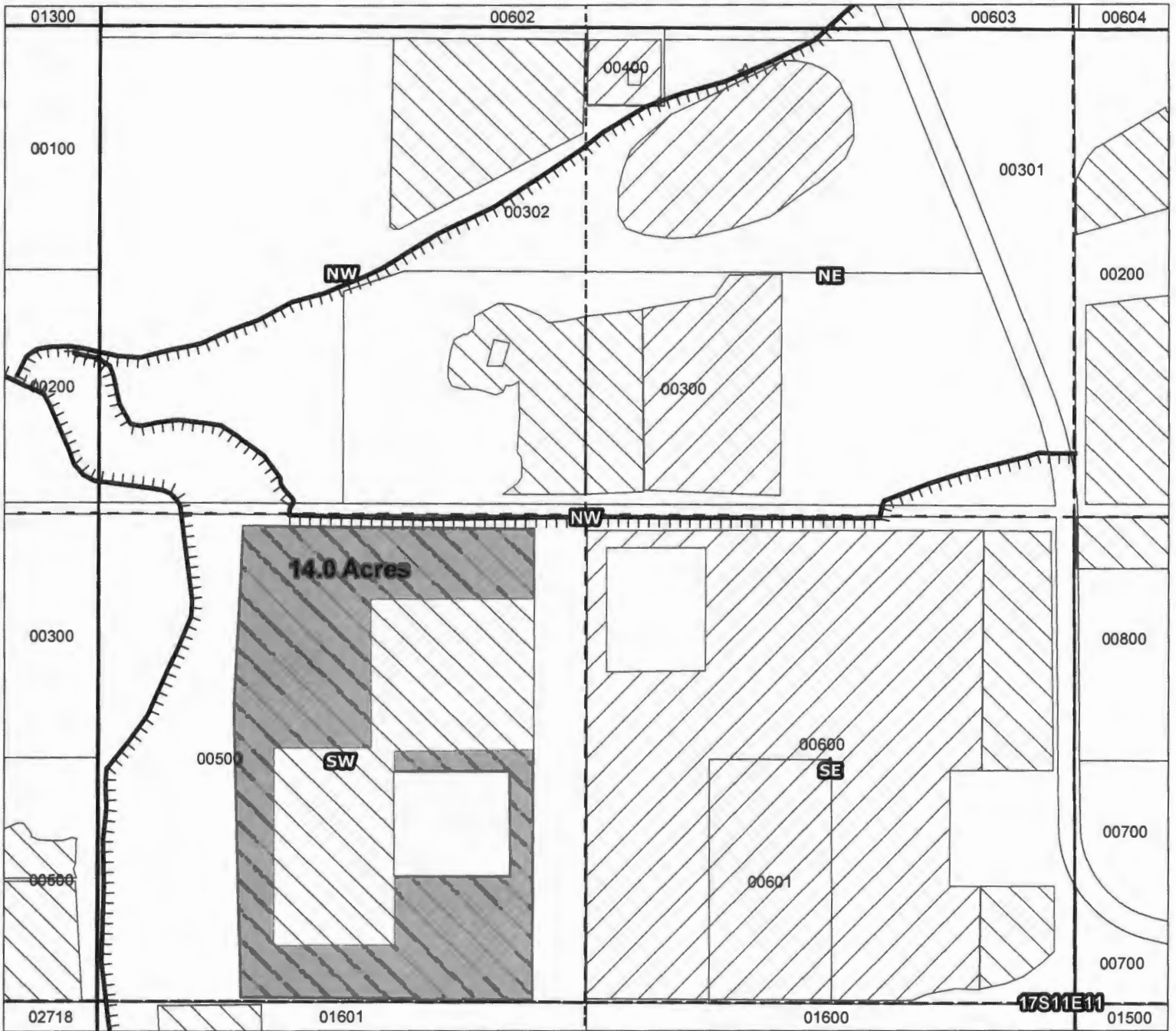
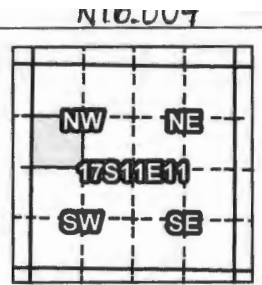
Prepared by FireWhat Inc. | November 2016



# Tumalo Irrigation District

## 2016 District Transfer Application "Off" Map

Certificates: 74146 (IR)  
for DeSoto, Alden & Cynthia



Taxlot 500, 17S11E11SWNW: 14.0 ac. Off (Cert# 74146)

RECEIVED BY OWRD

DEC 29 2016

SALEM, OR

- Canals
- Taxlots
- Rights to Transfer
- Cert 74146, 74147
- Cert 76106
- All Other Certs

f 12548

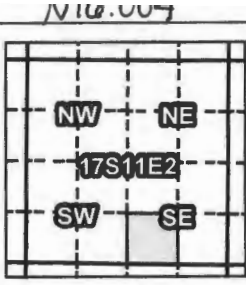


1 inch = 400 feet

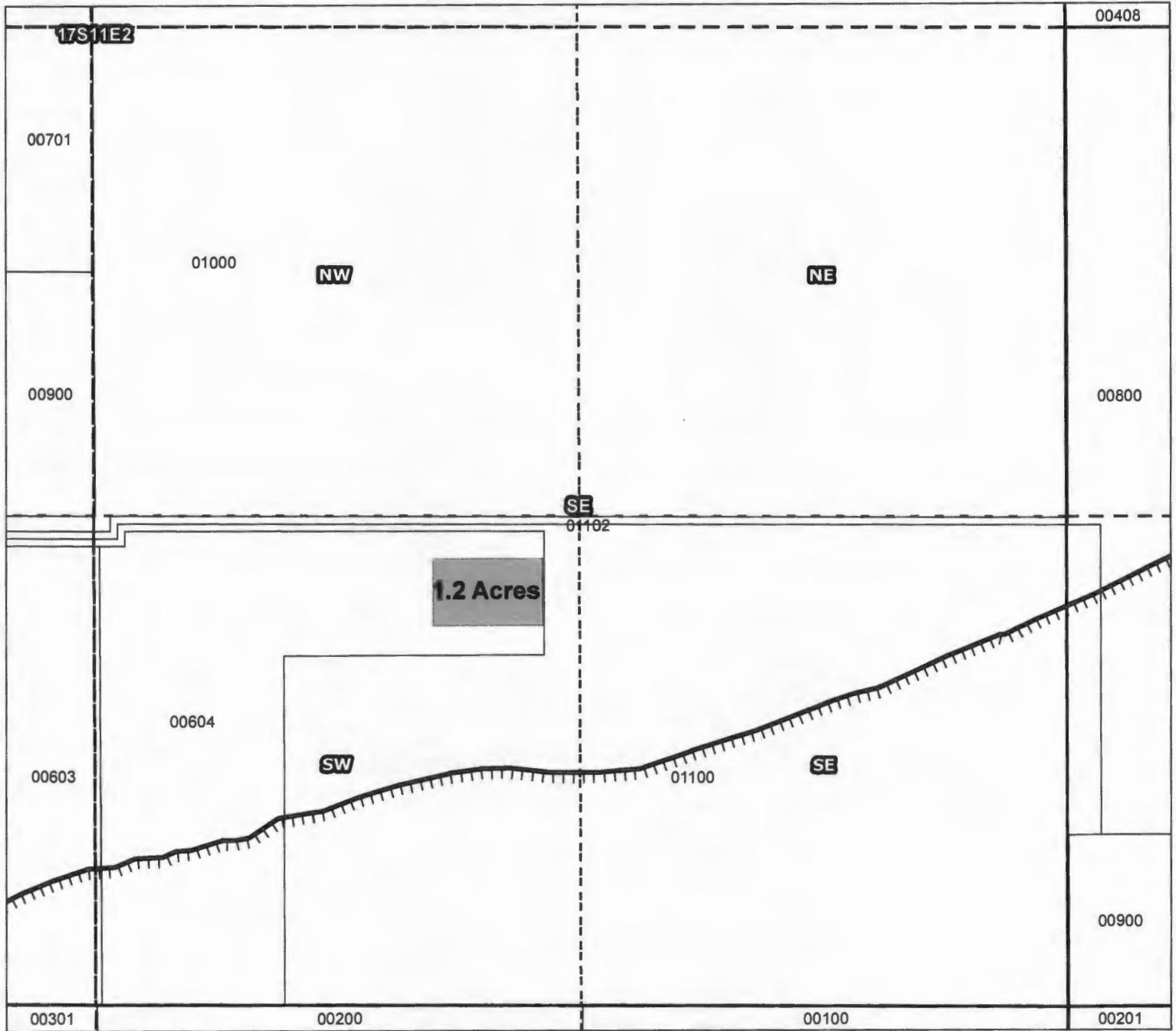
Prepared by FireWhat Inc. | November 2016

# Tumalo Irrigation District

## 2016 District Transfer Application "On" Map



Certificates: 74146 (IR)  
for B & R Bouma Trust



Taxlot 604, 17S11E2SWSE: 1.2 ac. On (Cert# 74146)

RECEIVED BY OWRD

DEC 29 2016

SALEM, OR

-  Canals
-  Taxlots
-  Rights to Transfer
-  Cert 74146, 74147
-  All Other Certs



1 inch = 400 feet

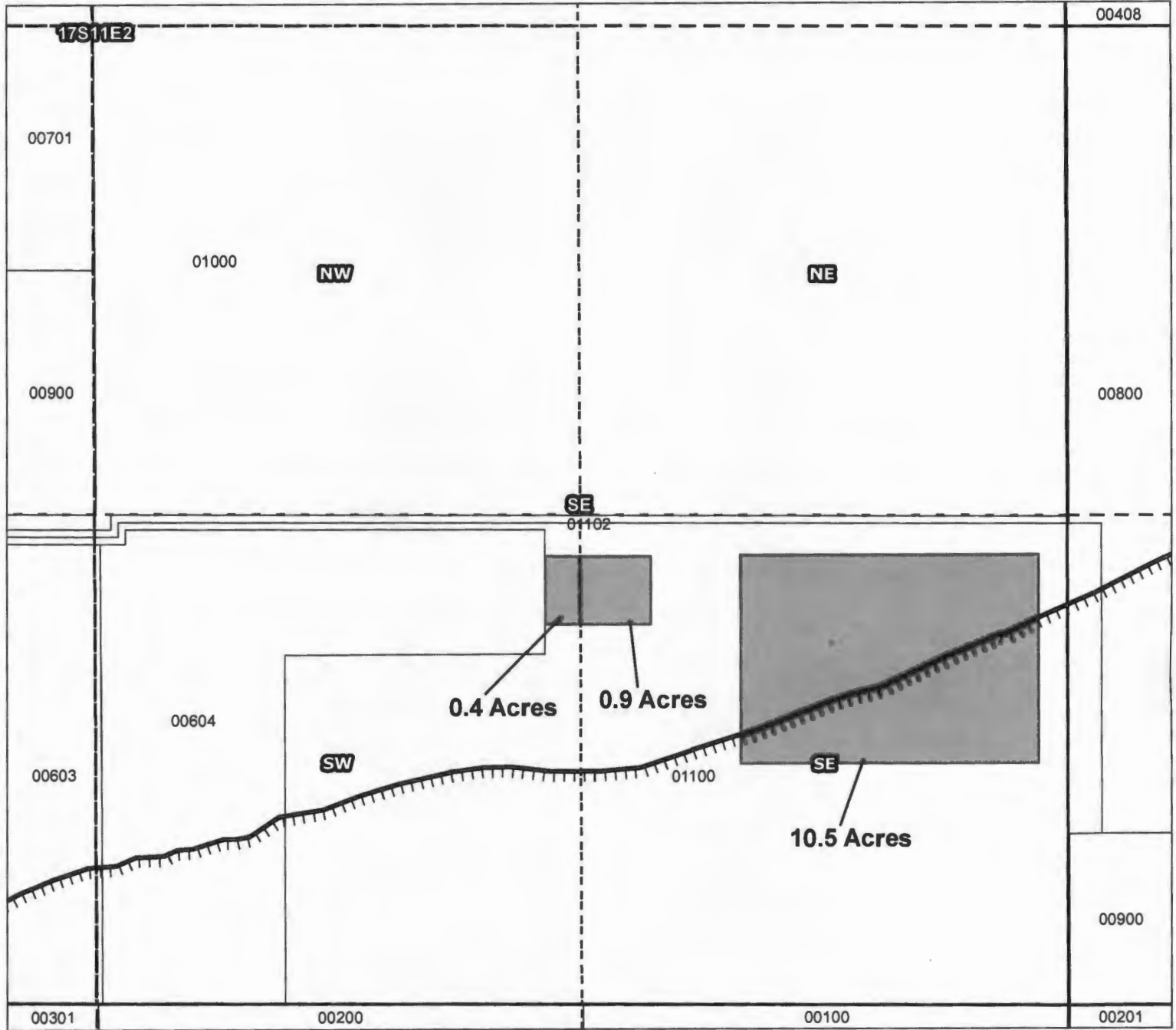
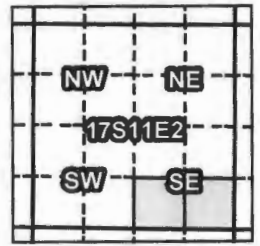
1 12548

Prepared by FireWhat Inc. | November 2016

# Tumalo Irrigation District

## 2016 District Transfer Application "On" Map

Certificates: 74146 (IR)  
for B & R Bouma Trust



Taxlot 1100, 17S11E2SWSE: 0.4 ac. On (Cert# 74146)  
Taxlot 1100, 17S11E2SESE: 11.4 ac. On (Cert# 74146)

RECEIVED BY OWRD

DEC 29 2016

SALEM, OR

- Canals
- Taxlots
- Rights to Transfer
- Cert 74146, 74147
- All Other Certs



1 inch = 400 feet

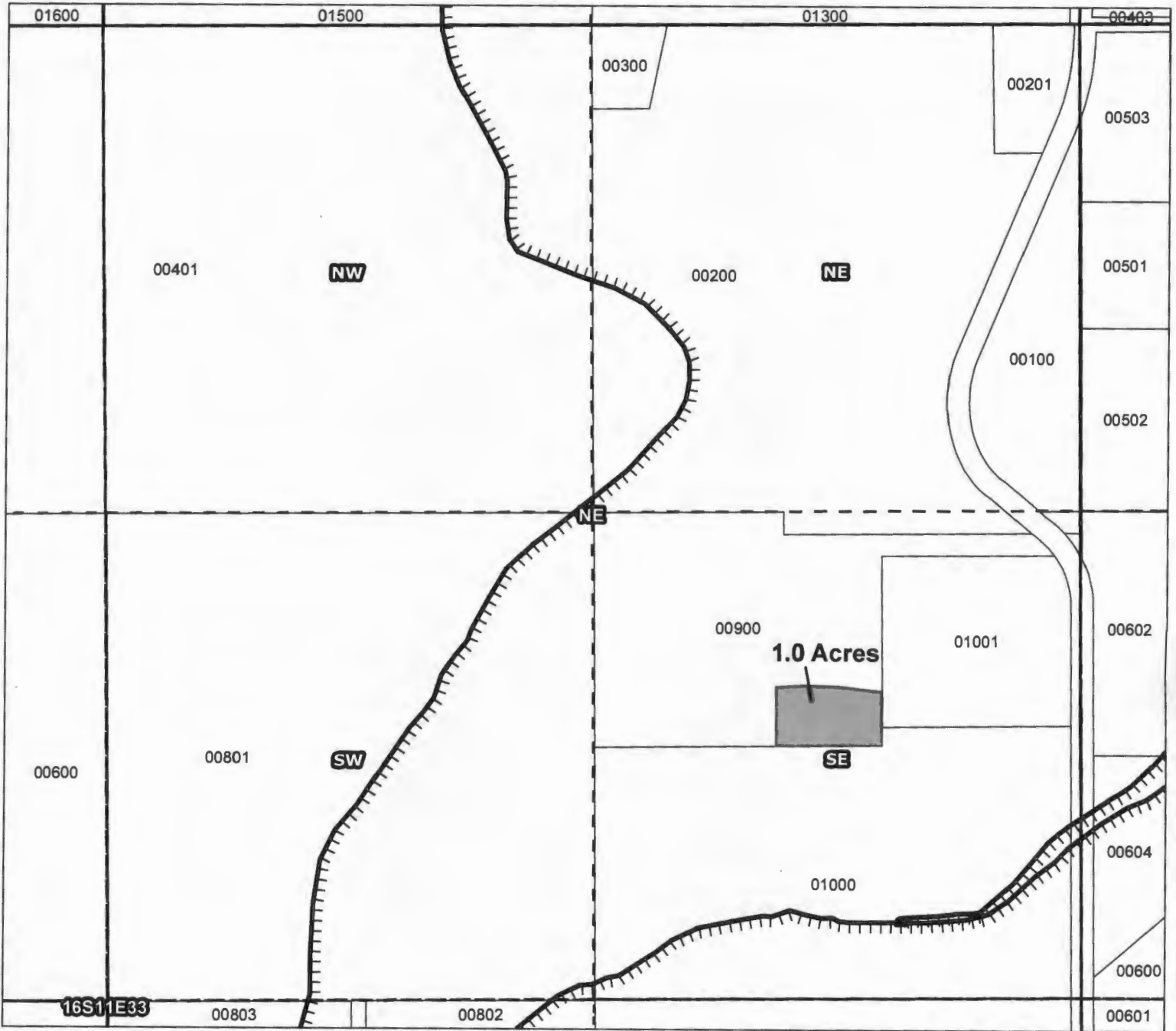
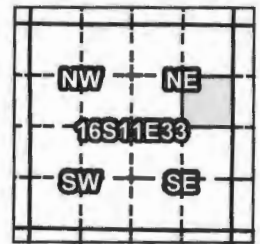
T 12548

Prepared by FireWhat Inc. | November 2016

# Tumalo Irrigation District

## 2016 District Transfer Application "On" Map

Certificates: 74146 (IR)  
for O'Neal, Steve/Garber, Nancy



Taxlot 900, 16S11E33SENE: 1.0 ac. On (Cert# 74146)

RECEIVED BY OWRD

DEC 29 2016

SALEM, OR

-  Canals
-  Taxlots
-  Rights to Transfer
-  Cert 74146, 74147
-  All Other Certs

T 12548



1 inch = 400 feet

Prepared by FireWhat Inc. | November 2016