

# T 8S & T 9S, R5W & R6W, W.M.

## Riverbend Farm

SECTION 36 WITHIN T8S R6W  
 SECTION 31 WITHIN T8S R5W  
 SECTION 1 WITHIN T9S R6W  
 SECTION 6 WITHIN T9S R5W  
 POLK COUNTY

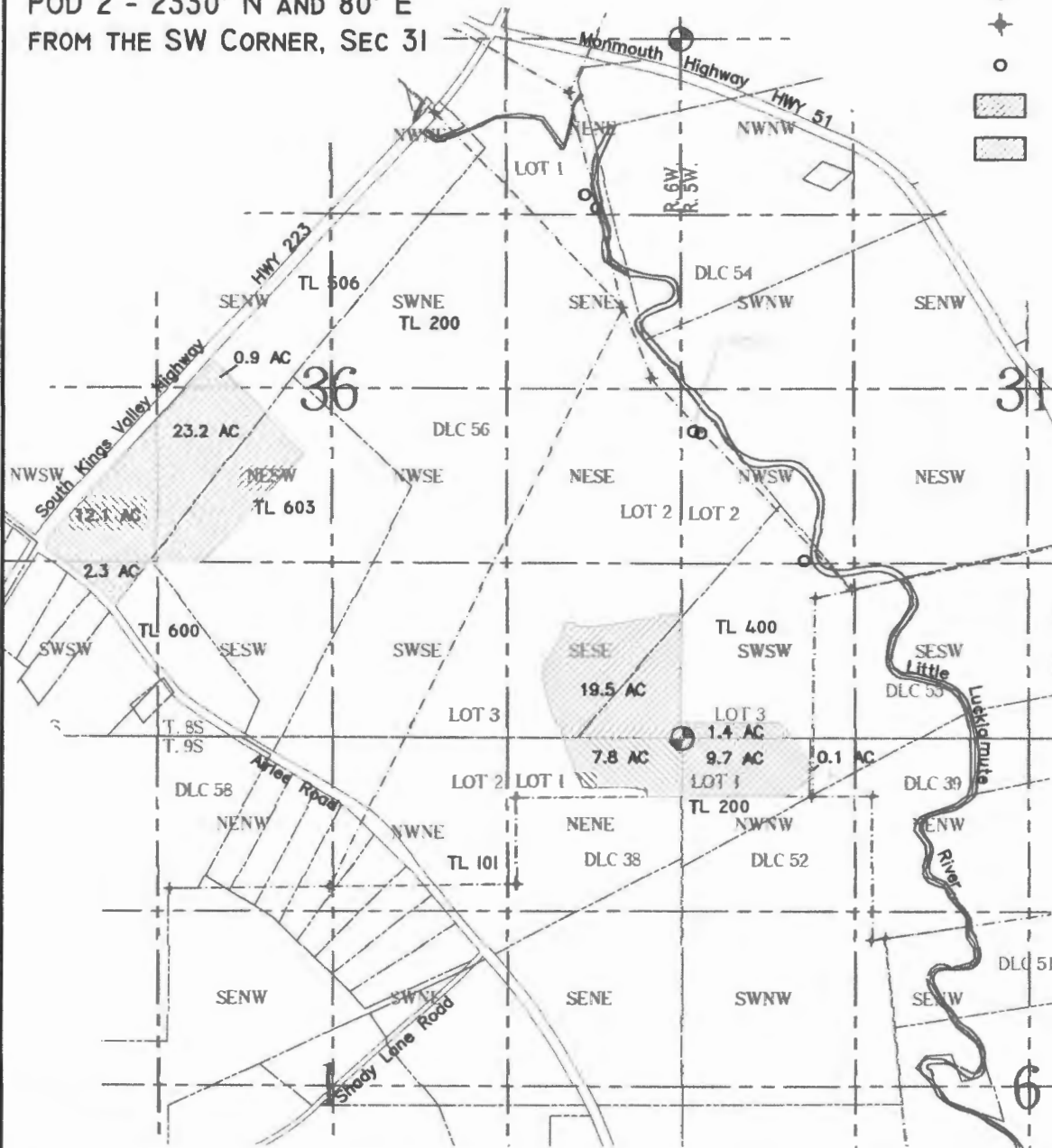
### LEGEND

- USGS GRID
- PROPERTY LINE
- DLC BOUNDARY
- ROADWAY
- +++++ RAILWAY
- WATER
- ⊕ SECTION CORNER
- ⊕ DLC CORNER
- DIVERSION POINT (P.O.D.)
- ▨ FROM ACRES
- ▨ TO ACRES

## Temporary Transfer

CERTIFICATE 57711

POD 2 - 2330' N AND 80' E  
 FROM THE SW CORNER, SEC 31



SCALE:  
 1"=1320'

THIS MAP IS NOT  
 INTENDED TO PROVIDE  
 LEGAL DIMENSIONS OR  
 LOCATIONS OF  
 PROPERTY OWNERSHIP  
 LINES.

**RECEIVED**  
 JAN 17 2017  
**OWRD**

FILE PATH & NAME: C:\BK Water Right Consulting\Projects\Kauer Farms\Riverbend Farm - 8s6w\TT Kauer 2016\RIVERBEND TRANSFER 11016 - wef.dwg

**BK WATER RIGHT CONSULTING**  
 PO Box 13434 Salem, Oregon 97309

**Riverbend Transfer Application Map - CERT 57711**

APPLICATION#: x-xxxxx PERMIT#: x-xxxxx AMENDMENT#: x-xxxxx SHEET 1 OF 5

T 12568

# T 8S, R5W & R6W, W.M. Riverbend Farm

SECTION 36 WITHIN T8S R6W  
SECTION 31 WITHIN T8S R5W  
POLK COUNTY

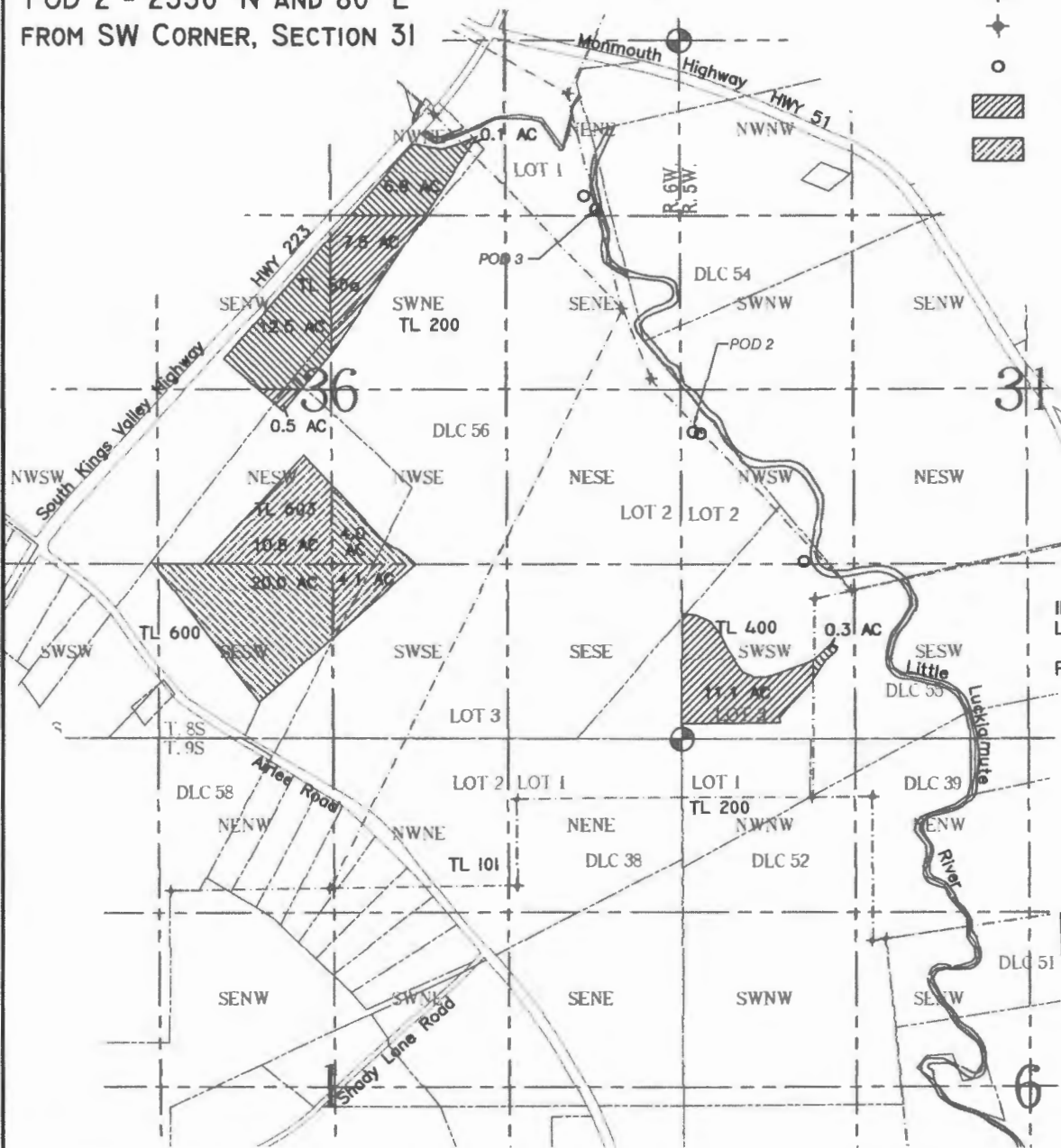
## LEGEND

- USGS GRID
- PROPERTY LINE
- DLC BOUNDARY
- ROADWAY
- +++++ RAILWAY
- WATER
- ⊕ SECTION CORNER
- ⊕ DLC CORNER
- DIVERSION POINT (P.O.D.)
- ▨ "FROM" ACRES
- ▨ "TO" ACRES

## Temporary Transfer

CERTIFICATE 58749

POD 3 - 1280' S AND 630' W  
FROM NE CORNER, SECTION 36  
POD 2 - 2330' N AND 80' E  
FROM SW CORNER, SECTION 31



SCALE:  
1" = 1320'

THIS MAP IS NOT  
INTENDED TO PROVIDE  
LEGAL DIMENSIONS OR  
LOCATIONS OF  
PROPERTY OWNERSHIP  
LINES.

**RECEIVED**  
JAN 17 2017  
**OWRD**

FILE PATH & NAME: C:\BK Water Right Consulting\Projects\Kauer Farms\Riverbend Farm - 8s6w\TT Kauer 2016\RIVERBEND TRANSFER 11016 - wef.dwg

**BK WATER RIGHT CONSULTING**  
PO Box 13434 Salem, Oregon 97309

**Riverbend Transfer Application Map - CERT 58749**

APPLICATION#: x-xxxxx PERMIT#: x-xxxxx AMENDMENT#: x-xxxxx SHEET 2 OF 5

T 12568

# T 8S & T 9S, R5W & R6W, W.M.

## Riverbend Farm

SECTION 36 WITHIN T8S R6W  
SECTION 31 WITHIN T8S R5W  
SECTION 1 WITHIN T9S R6W  
SECTION 6 WITHIN T9S R5W  
POLK COUNTY

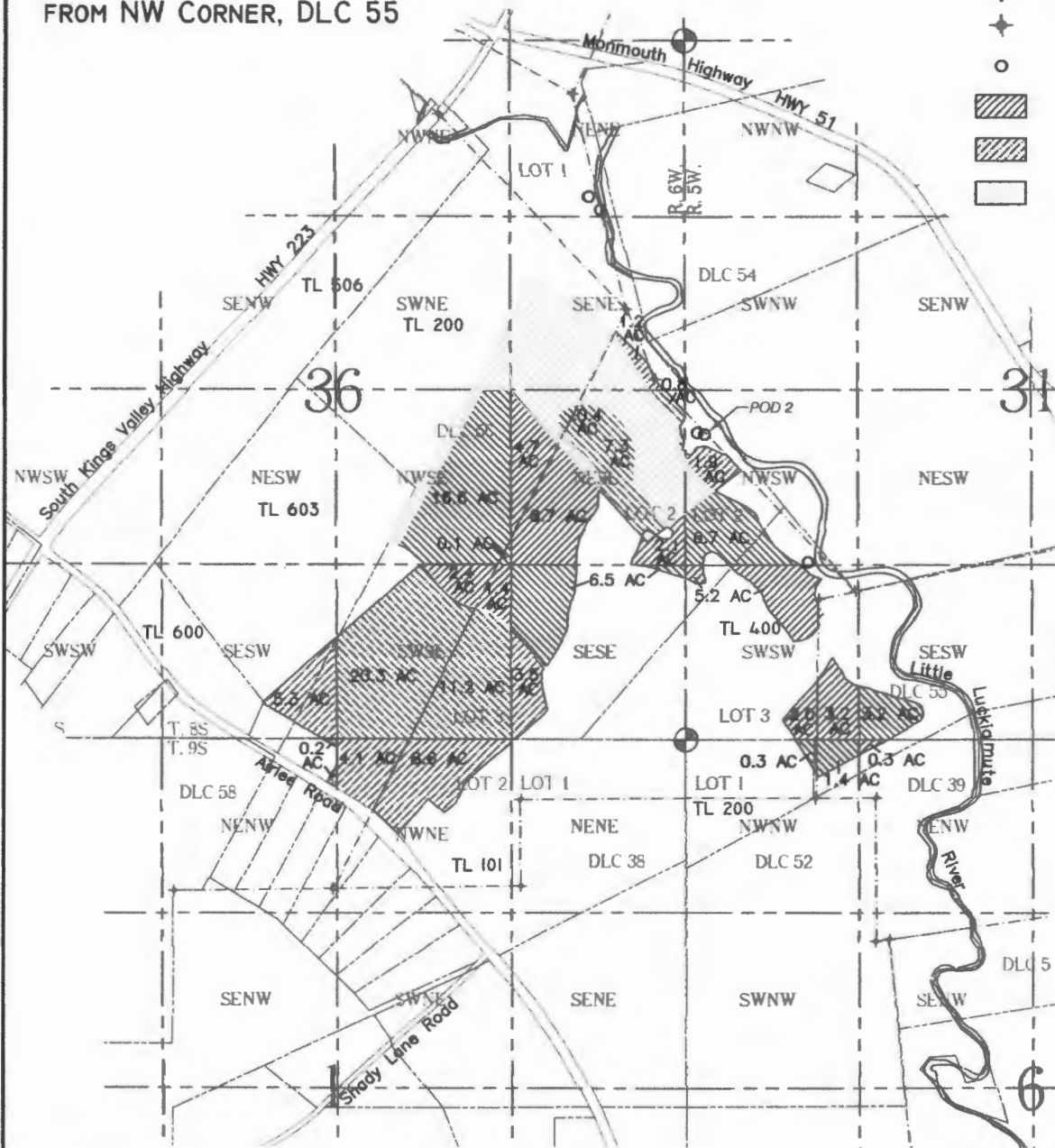
### LEGEND

- USGS GRID
- PROPERTY LINE
- DLC BOUNDARY
- ROADWAY
- +++++ RAILWAY
- WATER
- ⊕ SECTION CORNER
- ⊕ DLC CORNER
- DIVERSION POINT (P.O.D.)
- ▨ 'FROM' ACRES
- ▨ 'TO' ACRES
- LANDS NOT AFFECTED BY TRANSFER

## Temporary Transfer

CERTIFICATE 36427

POD 2 - 1250' N AND 870' W  
FROM NW CORNER, DLC 55



SCALE:  
1"=1320'

THIS MAP IS NOT  
INTENDED TO PROVIDE  
LEGAL DIMENSIONS OR  
LOCATIONS OF  
PROPERTY OWNERSHIP  
LINES.

RECEIVED

JAN 17 2017

OWRD

FILE PATH & NAME: C:\BK Water Right Consulting\Projects\Kauer Farms\Riverbend Farm - 8s6w\TT Kauer 2016\RIVERBEND TRANSFER 11016 - wef.dwg

BK WATER RIGHT CONSULTING  
PO Box 13434 Salem, Oregon 97309

Riverbend Transfer Application Map - CERT 36427

APPLICATION#: x-xxxxx PERMIT#: x-xxxxx AMENDMENT#: x-xxxxx SHEET 3 OF 5

T 12568

# T 8S & T 9S, R5W & R6W, W.M.

## Riverbend Farm

SECTION 36 WITHIN T8S R6W  
 SECTION 31 WITHIN T8S R5W  
 SECTION 1 WITHIN T9S R6W  
 SECTION 6 WITHIN T9S R5W  
 POLK COUNTY

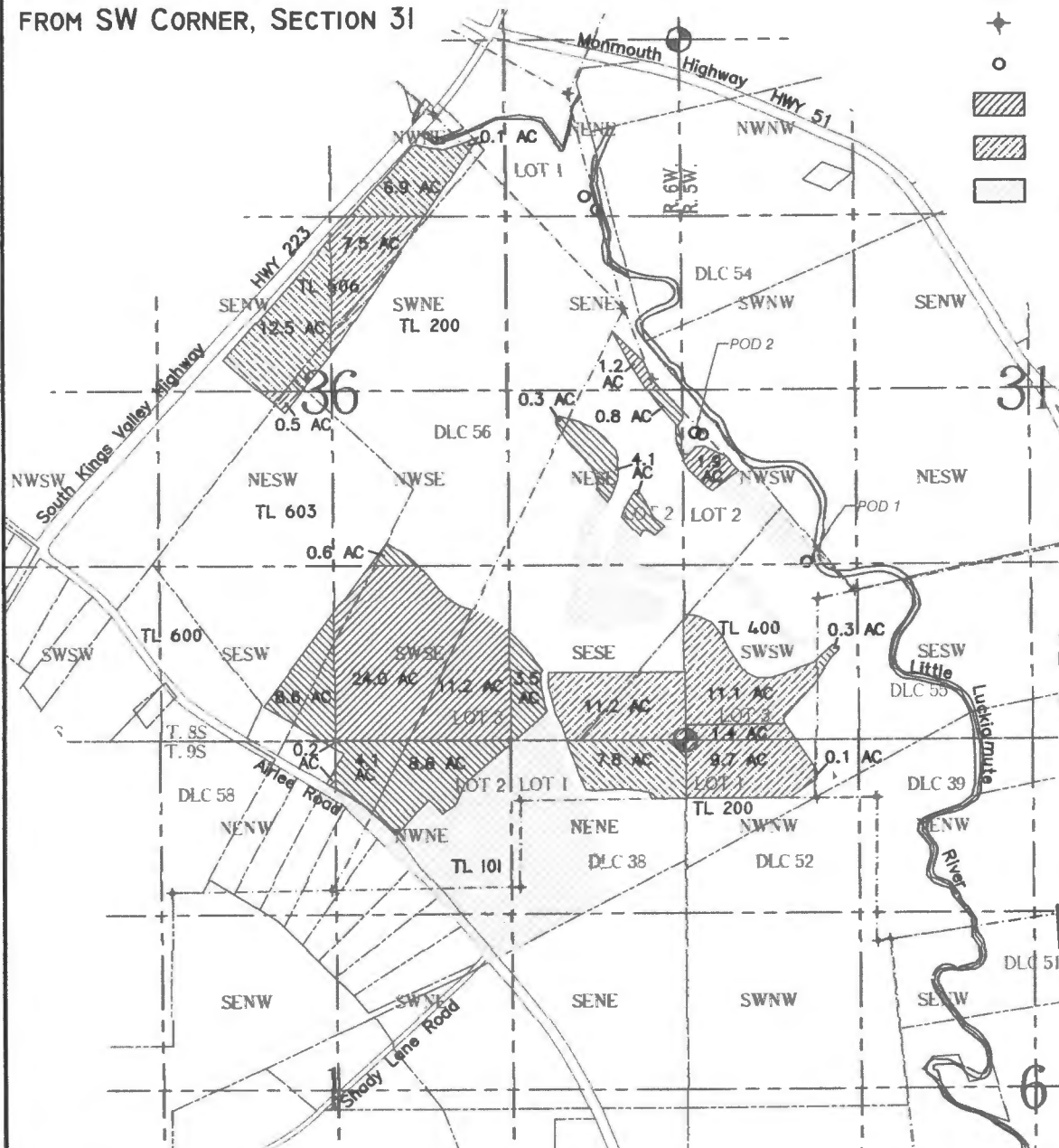
### Temporary Transfer

CERTIFICATE 39185

POD 1 - 1350' N AND 925' E  
 FROM SW CORNER, SECTION 31  
 POD 2 - 2330' N AND 80' E  
 FROM SW CORNER, SECTION 31

#### LEGEND

- USGS GRID
- PROPERTY LINE
- DLC BOUNDARY
- ROADWAY
- |||||| RAILWAY
- WATER
- ⊕ SECTION CORNER
- ⋄ DLC CORNER
- DIVERSION POINT (P.O.D.)
- ▨ FROM ACRES
- ▩ TO ACRES
- LANDS NOT AFFECTED BY TRANSFER



SCALE:  
1"=1320'

THIS MAP IS NOT  
 INTENDED TO PROVIDE  
 LEGAL DIMENSIONS OR  
 LOCATIONS OF  
 PROPERTY OWNERSHIP  
 LINES.

**RECEIVED**  
 JAN 17 2017  
**OWRD**

FILE PATH & NAME: C:\BK Water Right Consulting\Projects\Kauer Farms\Riverbend Farm - 8s6w\TT Kauer 2016\RIVERBEND TRANSFER 11018 - wef.dwg

**BK WATER RIGHT CONSULTING**  
 PO Box 13434 Salem, Oregon 97309

**Riverbend Transfer Application Map - CERT 39185**

APPLICATION#: x-xxxxx PERMIT#: x-xxxxx AMENDMENT#: x-xxxxx SHEET 4 OF 5

T 12568

# T 8S & T 9S, R5W & R6W, W.M.

## Riverbend Farm

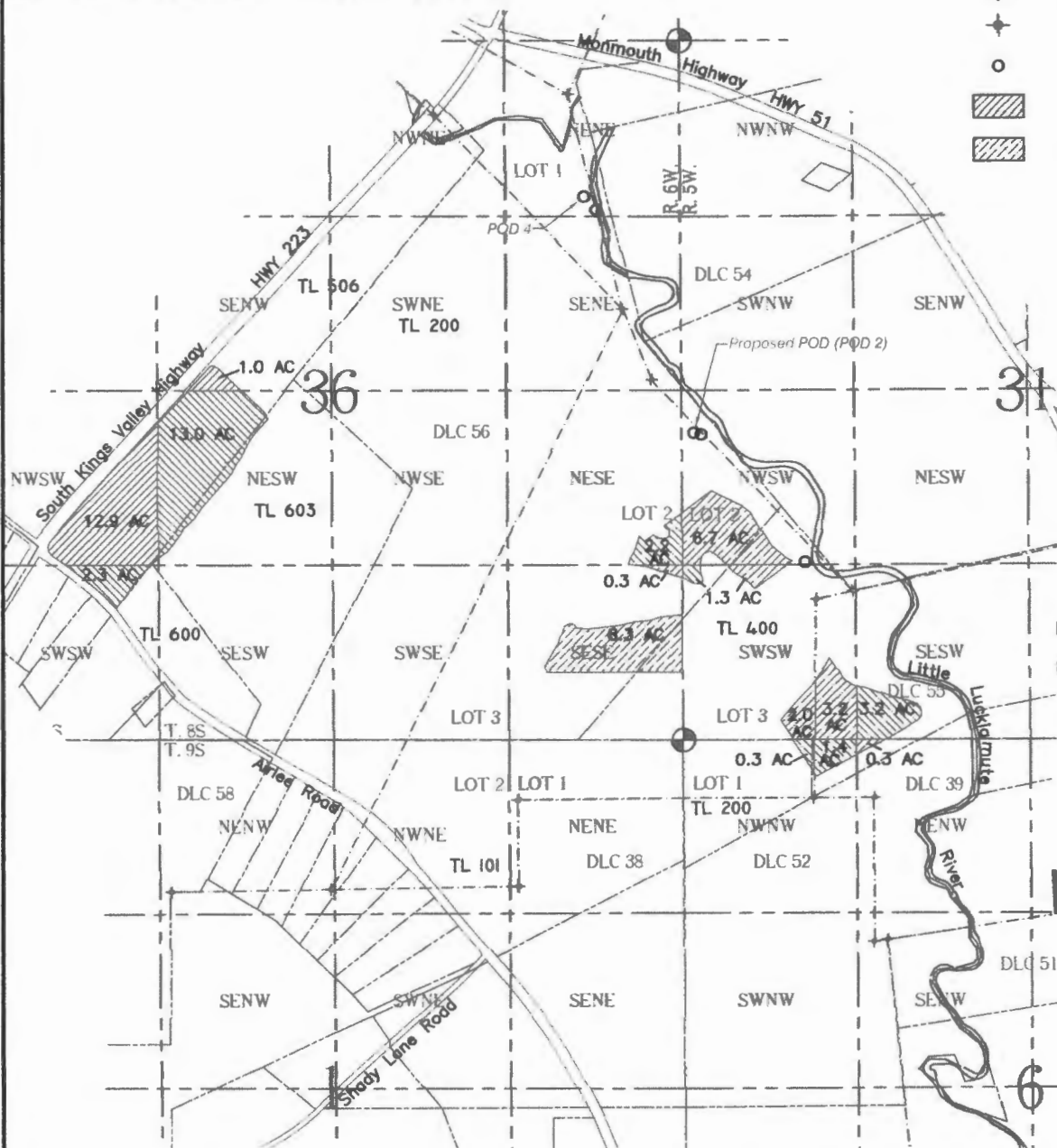
SECTION 36 WITHIN T8S R6W  
SECTION 31 WITHIN T8S R5W  
SECTION 6 WITHIN T9S R5W  
POLK COUNTY

### Temporary Transfer

CERTIFICATE 47648  
POD 4 - 1180' S AND 720' W  
FROM NE CORNER, SECTION 36  
PROPOSED POD (POD 2) - 2330' N  
AND 80' E FROM SW CORNER, SECT 31

#### LEGEND

- USGS GRID
- PROPERTY LINE
- DLC BOUNDARY
- ROADWAY
- +++++ RAILWAY
- WATER
- ⊕ SECTION CORNER
- ⋄ DLC CORNER
- DIVERSION POINT (P.O.D.)
- ▨ 'FROM' ACRES
- ▩ 'TO' ACRES



SCALE:  
1" = 1320'

THIS MAP IS NOT  
INTENDED TO PROVIDE  
LEGAL DIMENSIONS OR  
LOCATIONS OF  
PROPERTY OWNERSHIP  
LINES.

**RECEIVED**  
JAN 17 2017  
**OWRD**

FILE PATH & NAME: C:\BK Water Right Consulting\Projects\Kauer Farms\Riverbend Farm - 8s6w\TT Kauer 2016\RIVERBEND TRANSFER 11018 - wef.dwg

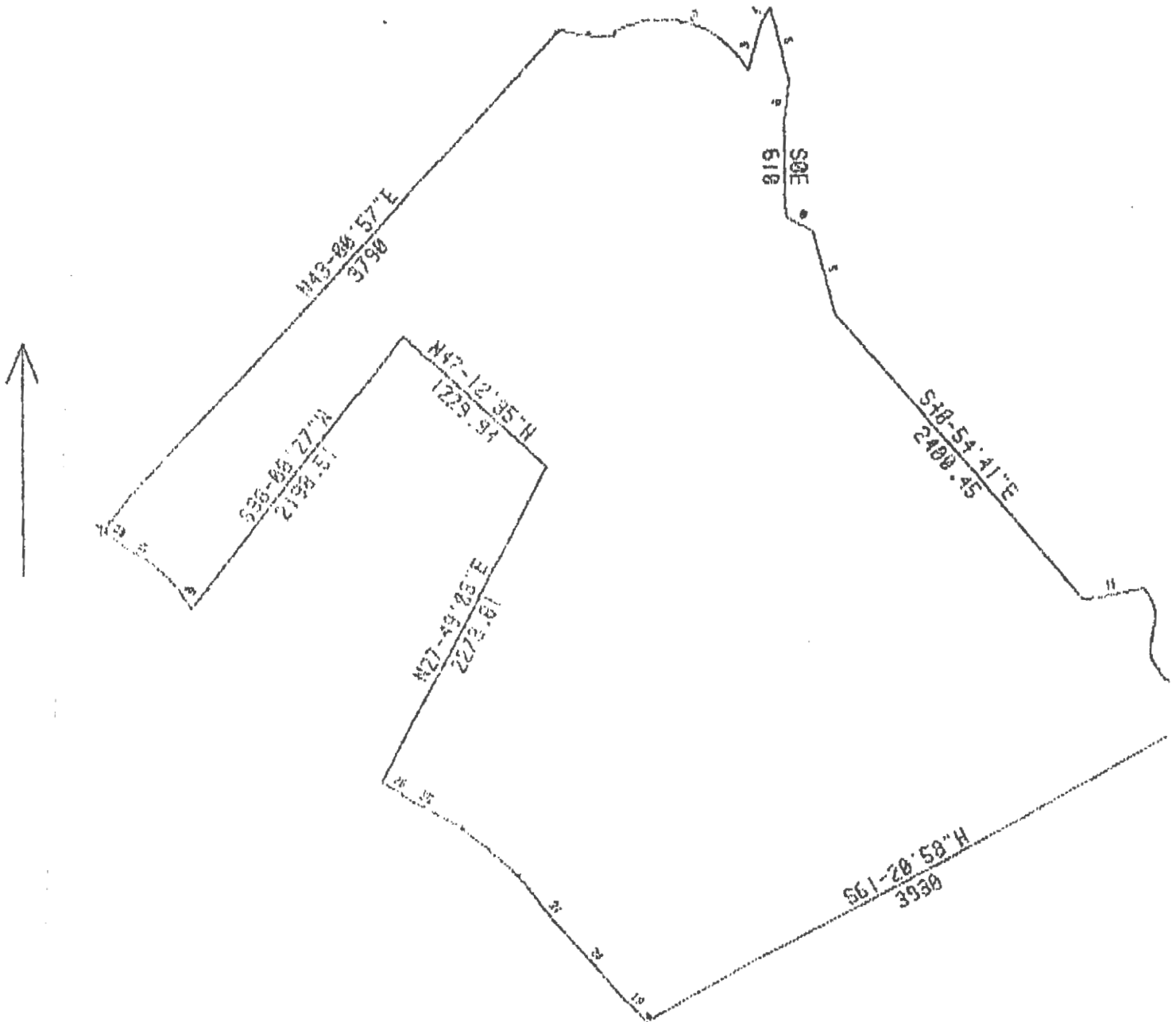
**BK WATER RIGHT CONSULTING**  
PO Box 13434 Salem, Oregon 97309

**Riverbend Transfer Application Map - CERT 47648**

APPLICATION#: x-xxxxx PERMIT#: x-xxxxx AMENDMENT#: x-xxxxx SHEET 5 OF 5

T 12568

EXHIBIT "A"  
Continued



Client: DALLAS

T 12568

RECEIVED

JAN 17 2017

OWND

copy

IMPORTANT  
This Map for Assessment  
and Taxation Purposes  
ONLY

SEC.31 T8S R5W WM  
POLK COUNTY

Scale 1" = 400'

See Map 8.5.20

8.5.31

See Map 8.5.29

28 30  
30 31

30 29  
31 32

E.E. CORNER  
THOMAS HAWY  
DLC NO. 28

101  
101M1  
91.88 AC

200  
68.91 AD.

301  
1.00 AC

100  
8.00 AC

304  
11.00 AD.

307  
PT PARCEL 2  
(UNSURVEYED)  
57.68 AC

301  
PARCEL 1  
(UNSURVEYED)  
41.02 AC

2-26

Cancelled No.

302  
500

E.E. CORNER  
DLC NO. 27

306  
119.73 AC

ANGLE CORNER  
JONES CHARMELAN  
DLC NO. 25

LABRAMUTE

303  
4.53 AC.

300  
28.25 AC.

305  
28.50 AD.

E.E. CORNER  
JONES CHARMELAN  
DLC NO. 25

See Map

400  
88.74 AC.  
PT LOT 3  
18.77 AC

E.W. CORNER  
JONES CHARMELAN  
DLC NO. 24

700  
54.80 AC.

E.E. CORNER  
PRESTON H. BOWMAN  
DLC NO. 24

T 12568

N.W. CORNER  
PRESTON H. BOWMAN  
DLC NO. 26

702  
49.58 AC

LOT 3 - 34.40 AC

2-4

2-26

701  
.23 AC.

800  
27.52 AC.

JAN 17 2017

RECEIVED

08/29/16

N.W. CORNER  
DLC NO. 27

E.T. CORNER  
See Map 8.5.16

801  
22.48 AC

31 32  
6 5

E.E. CORNER  
PRESTON H. BOWMAN  
DLC NO. 26

8.5.31

COPY

**IMPORTANT**  
This Map for Assessment  
and Taxation Purposes  
ONLY

**SEC. 6 T9S R5W WM  
POLK COUNTY**

Scale 1" = 400'

9.5.6

See Map 8.5.31

36 31

31 32

200  
14.80 AC. 10.82 AC.

102  
59.40 AC.

**2-4**

103  
92.00 AC.

S.E. CORNER  
FRYDOR H. BOHRMAN  
DLC NO. 38

Cancelled No.

900  
1000

**2-26**

300  
87.00 AC.

S.E. CORNER  
DLC NO. 81

S.W. CORNER  
FRYDOR H. BOHRMAN  
DLC NO. 38

101  
.50 AC.

S.E. CORNER  
DLC NO. 82

100  
7.30 AC.

700  
23.48 AC.

See Map 9.5.5

400

701  
107.32 AC.

**2-27**

400  
53.80 AC.

N.W. CORNER  
JOSE H. SMITH  
DLC NO. 80

702  
3.74 AC.

See Map 9.61

**2-26**

401  
32.70 AC.

600  
180.01 AC.

1100  
1.01 AC.

T 12568

500  
85.49 AC.

**RECEIVED**

JAN 17 2017

**OWRPD**

01/29/16

N.E. CORNER  
JONATHAN LIGHT  
DLC NO. 83

See Map 9.5.7

S.E. CORNER  
JULIANA JONES  
DLC NO. 82

ANGLE CORNER  
DLC NO. 81

See Map 9.5.8

9.5.6



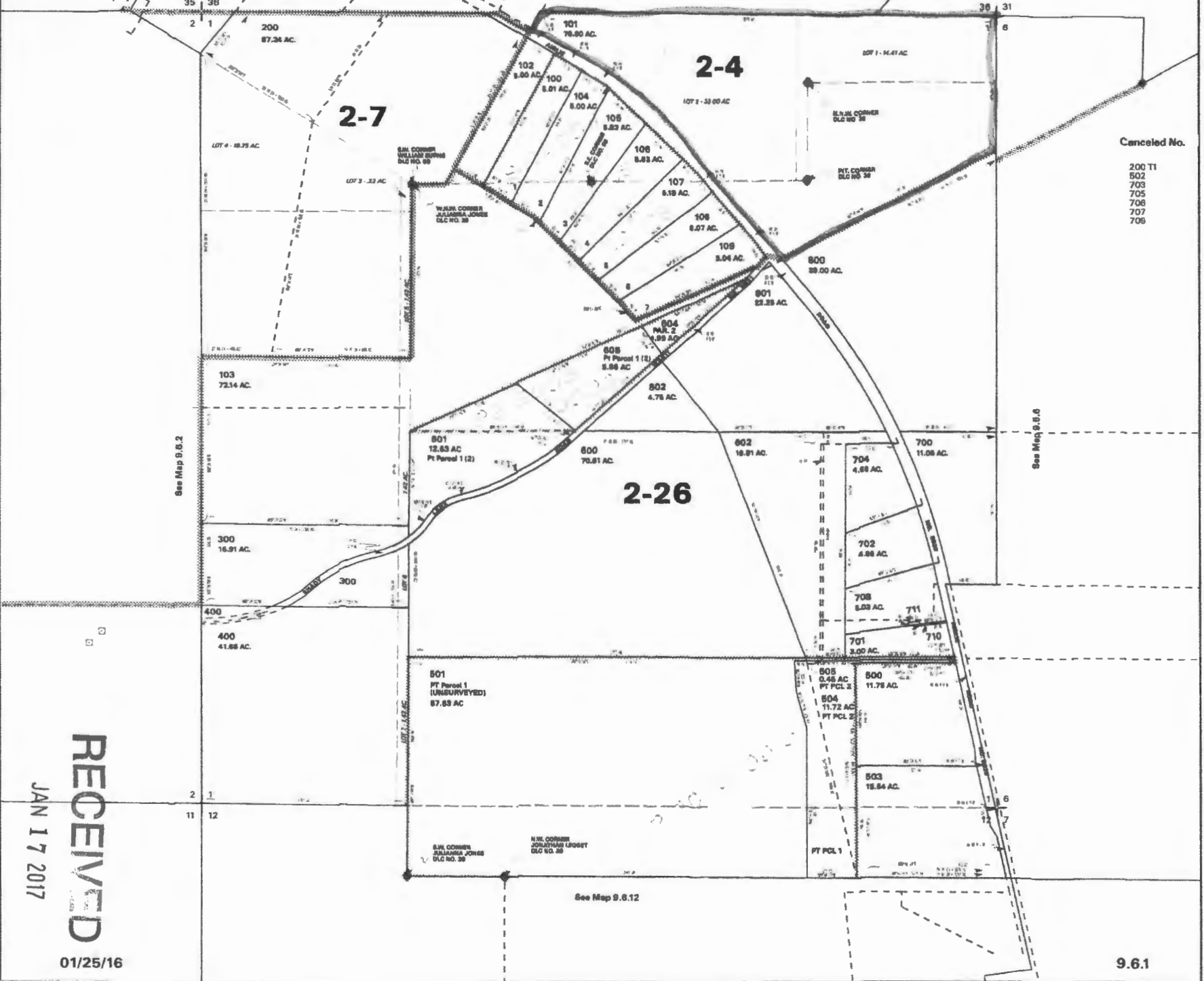
GOPY

SEC.1 T9S R6W WM  
POLK COUNTY

9.6.1

Scale 1" = 400'  
See Map 9.6.38

IMPORTANT  
This Map for Assessment  
and Taxation Purposes  
ONLY



Canceled No.  
200 T1  
502  
705  
706  
707  
708

T 2568

OWPRD

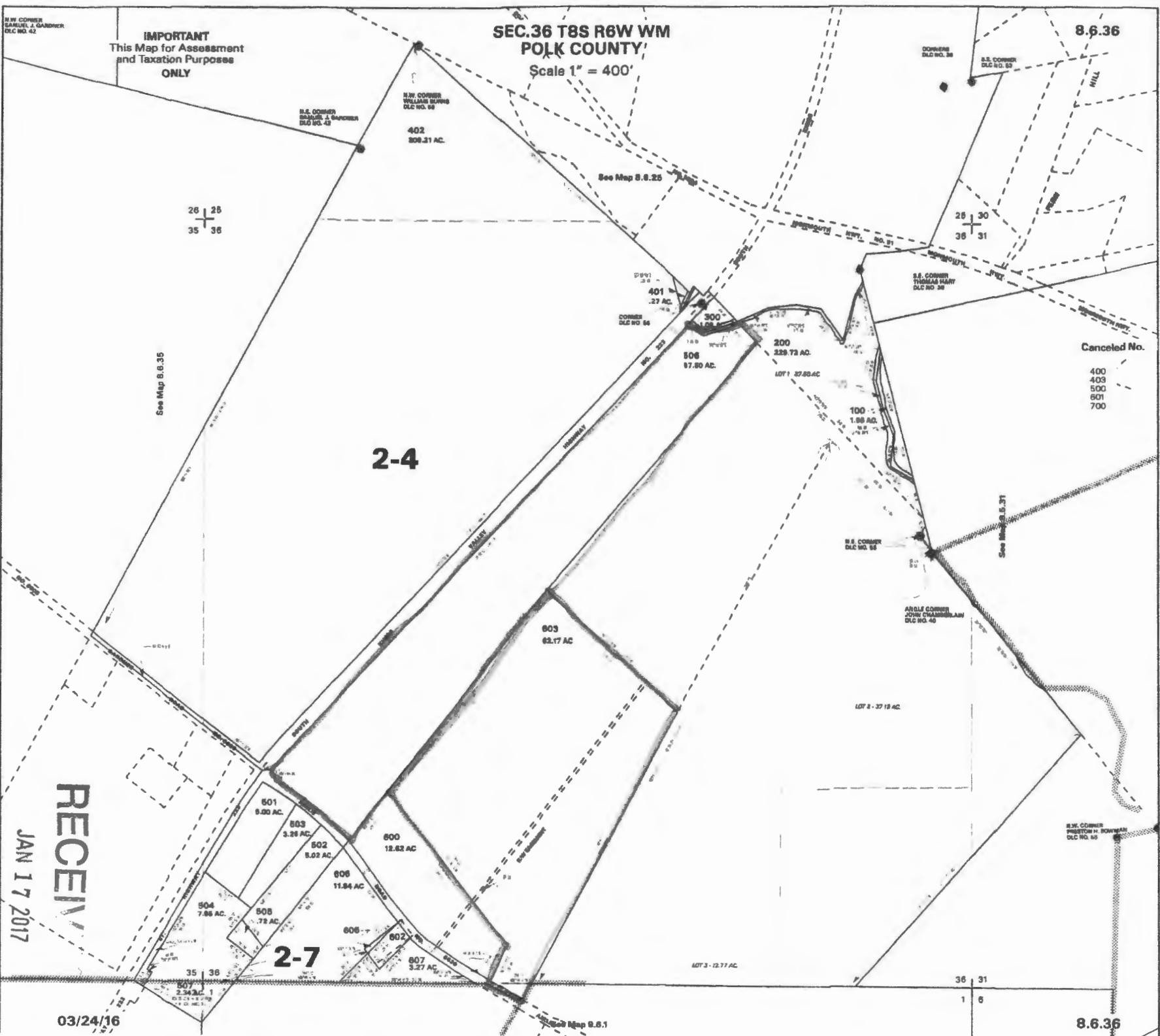
JAN 17 2017

RECEIVED

01/25/16

9.6.1

Copy



SEC.36 T8S R6W WM  
POLK COUNTY  
Scale 1" = 400'

8.6.36

26 | 25  
35 | 36

28 | 30  
38 | 31

Canceled No.  
400  
403  
500  
601  
700

2-4

603  
82.17 AC

2-7

501 9.00 AC  
502 9.02 AC  
503 3.28 AC  
504 7.86 AC  
505 7.8 AC  
506 11.84 AC  
600 12.82 AC  
601 11.84 AC  
602 7.8 AC  
607 3.27 AC

RECEIVED

JAN 17 2017

03/24/16

36 | 31  
1 | 6

8.6.36

I 12568

OWPRD