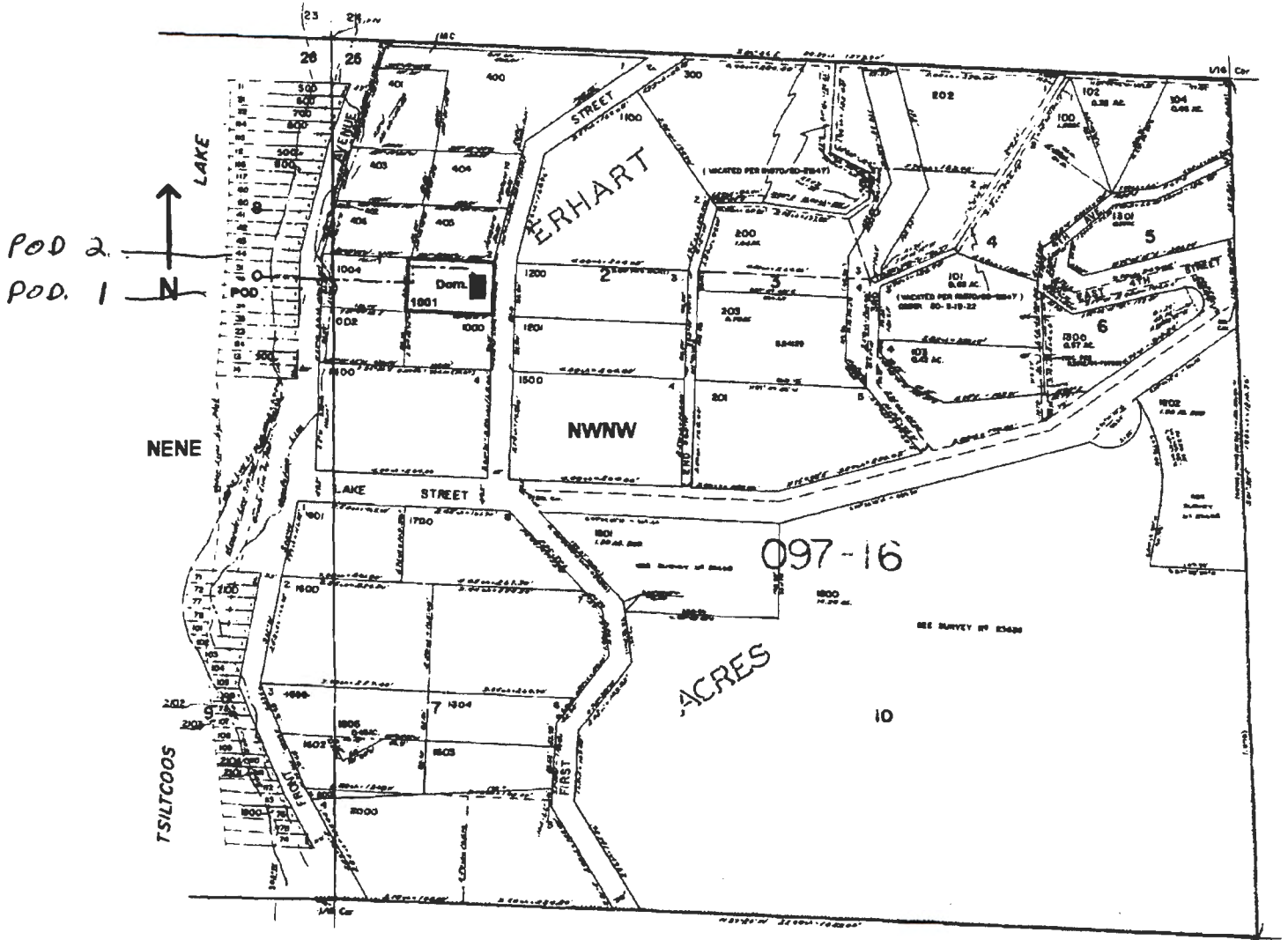


NW1/4 NW1/4 Sec. 25T19S. R12 W.W.M.

LANE COUNTY

Scale: 1" = 250'



- 1 POD is located 365 ft. S. and 115 ft. W. from the NE corner of Sec. 25
- 2 POD IS LOCATED 265 FT. S. AND 115 FT. W FROM NE CORNER OF SEC. 26

app # 586240

RECEIVED BY OWRD

FEB 27 2017

SALEM, OR

RECEIVED

APR 04 2005

WATER RESOURCES DEPT.  
SALEM, OREGON

T 12597