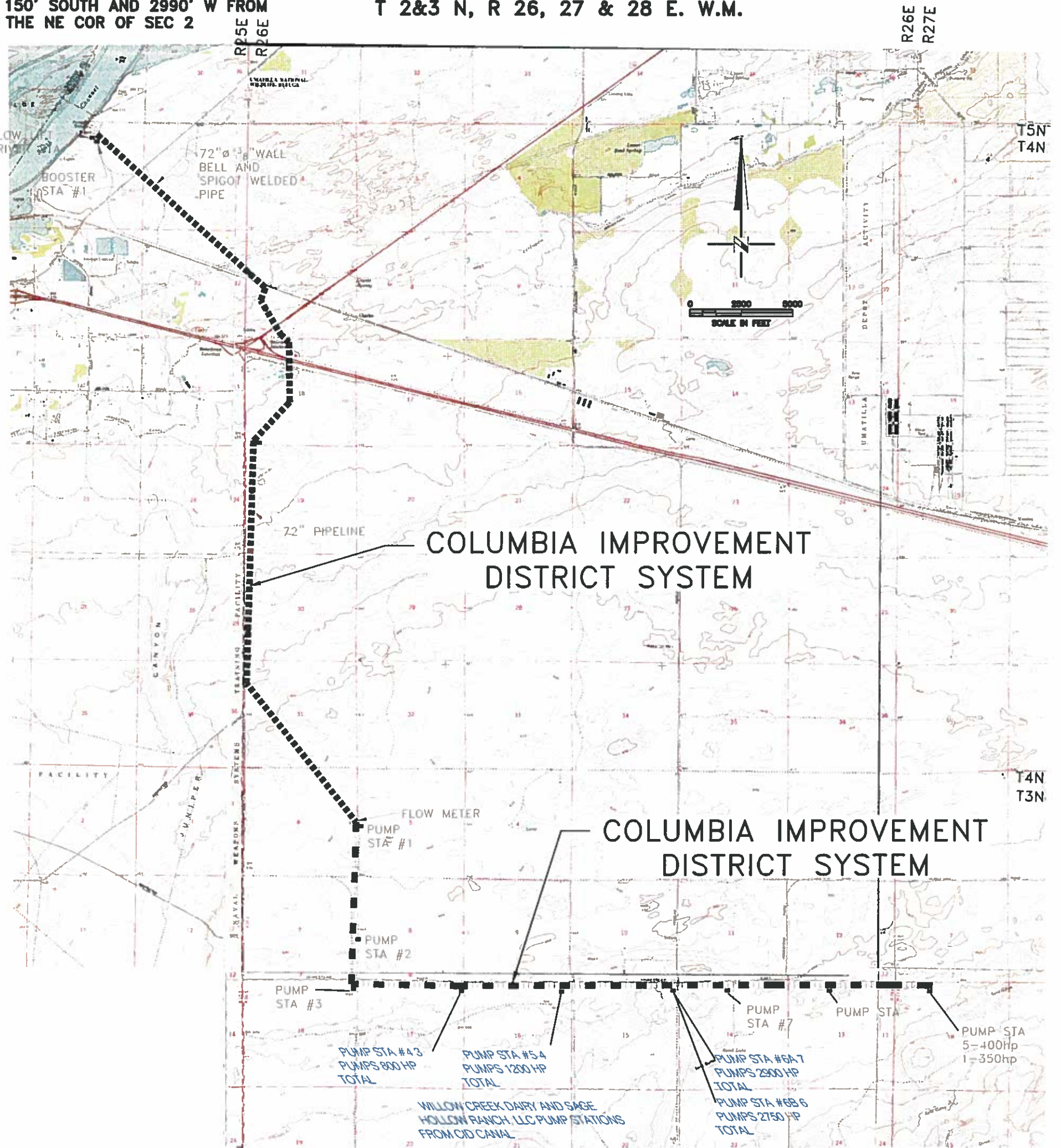


1262

P.O.D. COLUMBIA RIVER
LOCATED IN LOT 7 NE 1/4 NW
1/4, SEC 2, T4N, R25 EWM,
150' SOUTH AND 2990' W FROM
THE NE COR OF SEC 2

COLUMBIA IMPROVEMENT DISTRICT to VELDE DELIVERY SYSTEM FROM THE COLUMBIA RIVER

T 2&3 N, R 26, 27 & 28 E. W.M.



DRAWING: \\f\files\public\Project\30-05-016 - Pottery Water Rights Consulting\00 Misc Engineering\Cad\to VELDr\30-05-016 to Velde Del.dwg
PRINTED BY: rslr on 03/21/17 05:14 AM

RECEIVED

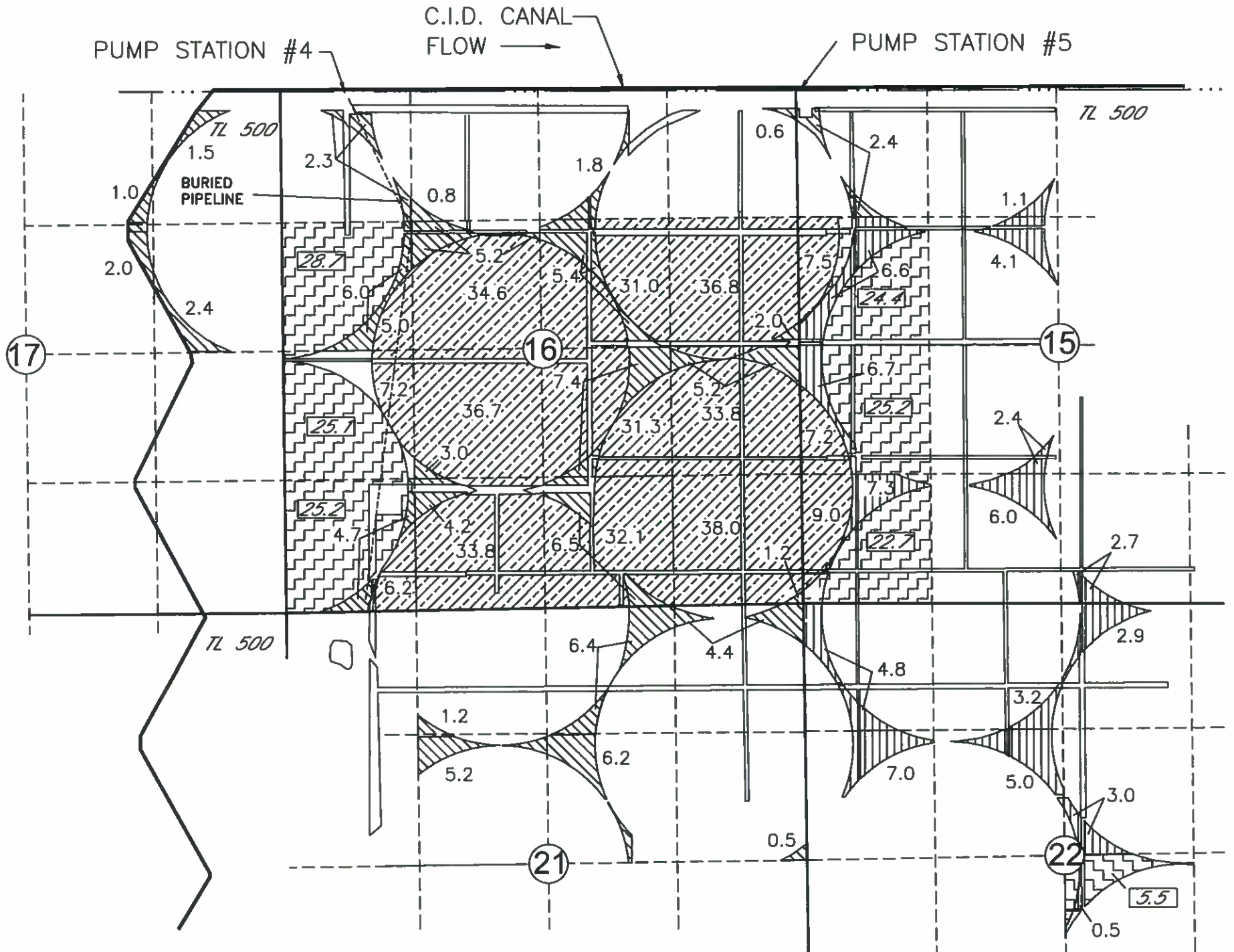
MAR 24 2017

OWRD

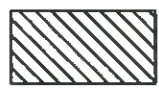




189921-1
T-1262

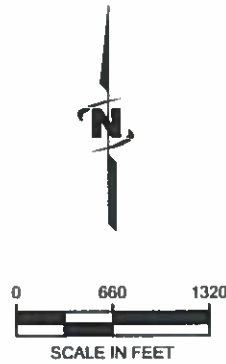
**COLUMBIA IMPROVEMENT DISTRICT
 TEMPORARY TRANSFER APPLICATION MAP
 WILLOW CREEK DAIRY TO SAGE HOLLOW RANCH, LLC
 FOR PORTIONS OF CERTIFICATES 86992, 86993, AND 80062
 T3N, R26E, W.M., MORROW COUNTY**

SHEET 1 OF 2 "FROM MAP"



LEGEND

-  89.5 AC OF CERT 86992
-  63.3 AC OF CERT 86993
-  350.2 AC OF CERT 80062
-  AC OF CERT 80062 in QTR QTR NOT ASSOCIATED WITH THIS TRANSFER
-  AC OF CERT 86993 in QTR QTR NOT ASSOCIATED WITH THIS TRANSFER



NOTE:
 THE PURPOSE OF THIS MAP IS TO IDENTIFY THE APPROXIMATE LOCATION OF THE WATER RIGHT. IT IS NOT INTENDED TO PROVIDE INFORMATION RELATIVE TO THE LOCATION OF PROPERTY OWNERSHIP BOUNDARY LINES. PIPE LOCATIONS AND SIZES WHERE SHOWN WERE PROVIDED BY FARM OPERATIONAL PERSONNEL AND ARE APPROXIMATE LOCATIONS AND SIZES.

March 18, 2017

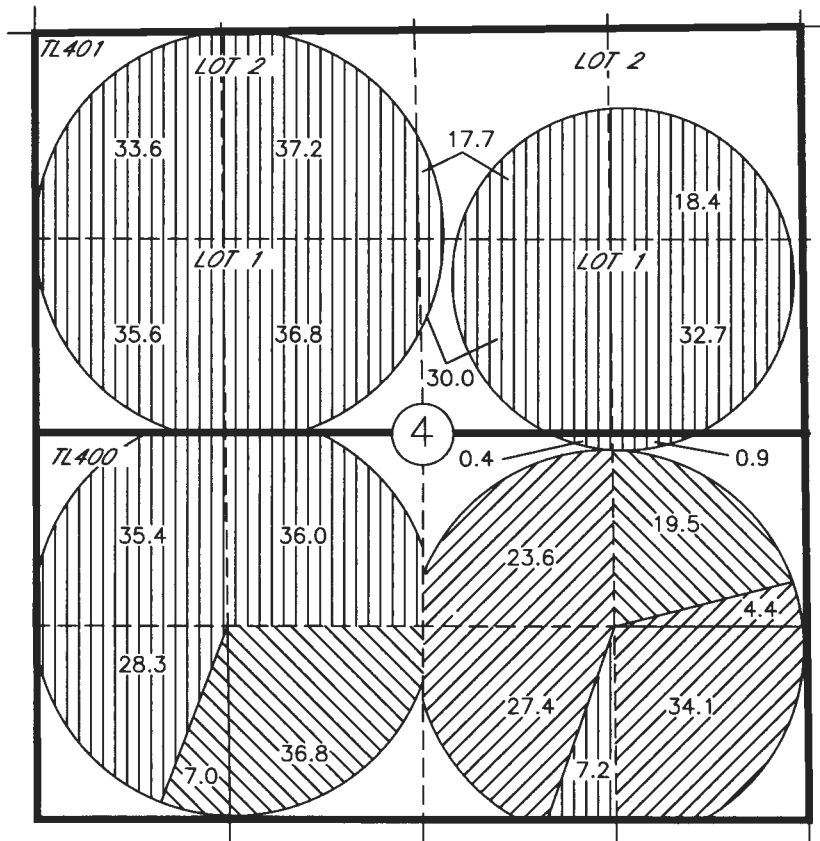
RECEIVED

MAR 24 2017




OWRD

COLUMBIA IMPROVEMENT DISTRICT
 TEMPORARY TRANSFER APPLICATION MAP
 WILLOW CREEK DAIRY TO SAGE HOLLOW RANCH, LLC
 FOR PORTIONS OF CERTIFICATES 86992, 86993, AND 80062
 T3N, R26E, W.M., MORROW COUNTY

SHEET 2 OF 2 " TO MAP "



LEGEND

-  350.2 AC CERT 80062
-  89.5 AC CERT 86992
-  63.3 AC CERT 86993



RECEIVED

MAR 24 2017

OWRD

P.O.D. COLUMBIA RIVER
 LOCATED IN LOT 7, NE1/4 NW1/4,
 SEC 2, T4N, R25E, W.M.; 150 FT
 SOUTH AND 2990 FT WEST FROM
 THE NE COR OF SEC 2.

March 18, 2017

NOTE:
 THE PURPOSE OF THIS MAP IS TO IDENTIFY THE APPROXIMATE LOCATION OF THE WATER RIGHT. IT IS NOT INTENDED
 TO PROVIDE INFORMATION RELATIVE TO THE LOCATION OF PROPERTY OWNERSHIP BOUNDARY LINES, PIPE LOCATIONS
 AND SIZES WHERE SHOWN WERE PROVIDED BY FARM OPERATIONAL PERSONNEL AND ARE APPROXIMATE LOCATIONS AND
 SIZES.

T-12621