

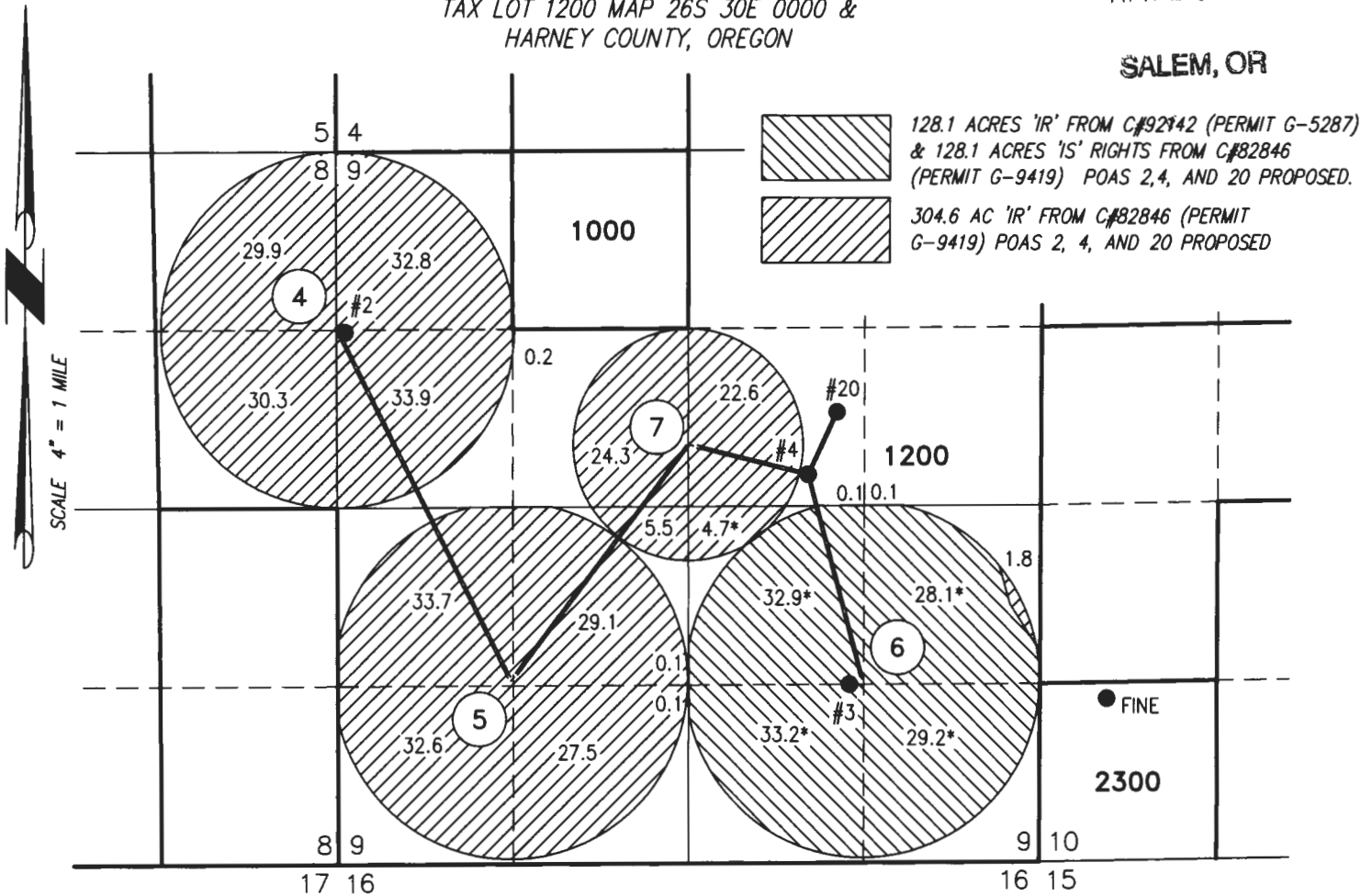
MAP TO ACCOMPANY APPLICATION TO CHANGE PLACE OF USE & POINTS OF APPROPRIATION FOR RATTLESNAKE LAND & CATTLE

RECEIVED BY OWRD

TAX LOT 1200 MAP 26S 30E 0000 &
HARNEY COUNTY, OREGON

APR 10 2017

SALEM, OR



RENEWAL DATE: 12/31/2018

THIS MAP IS FOR THE PURPOSE OF LOCATING A WATER RIGHT ONLY AND HAS NO INTENT TO PROVIDE LEGAL DIMENSIONS OR THE LOCATION OF PROPERTY LINES.

- **WELL #2**
(MALH 2324) LOCATED IN THE SW 1/4 NW 1/4 SECTION 9, T26S R30E, W.M. AND 1330' SOUTH AND 65' EAST FROM NW CORNER.
- **WELL #3**
(HARN 1330) LOCATED IN THE SW 1/4 SE 1/4 SECTION 9, T26S R30E, W.M. AND 1306' NORTH AND 1416' WEST FROM SE CORNER.
- **FINE WELL**
(HARN 1332) LOCATED IN THE SW 1/4 SW 1/4 SECTION 10, T26S R30E, W.M. AND 1200' NORTH AND 506' EAST FROM SW CORNER.
- **WELL #4**
(HARN 1331) LOCATED IN THE SW 1/4 NE 1/4 SECTION 9, T26S R30E, W.M. AND 2407' SOUTH AND 1732' WEST FROM NE CORNER.
- **WELL #20**
(HARN 52457) LOCATED IN THE SW 1/4 NE 1/4 SECTION 9, T26S R30E, W.M. AND 1975' SOUTH AND 1535' WEST FROM NE CORNER.

PROJECT No. 16-125

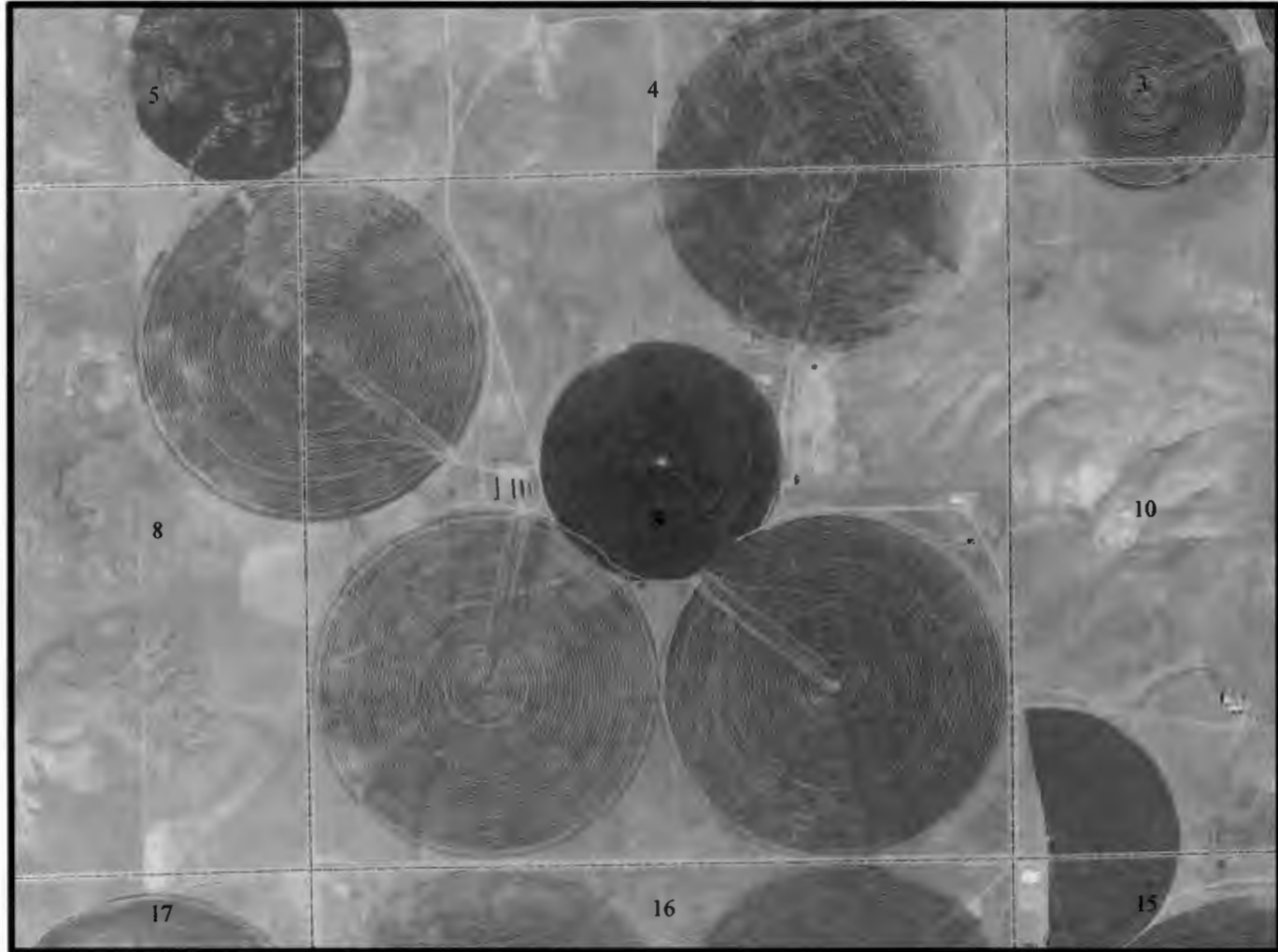
PREPARED AT THE REQUEST OF:
RATTLESNAKE LAND & CATTLE
524 HWY 20N
HINES, OR 97738



**ALL POINTS ENGINEERING
& SURVEYING, INC.**

P.O. BOX 767
TERREBONNE, OREGON 97760
(541) 548-5833 PH
Scott@APEandS.com
www.APEandS.com

T26S R 30E, W.M.



June 2016 aerial imagery from NRCS Gateway website imported into ArcMap GIS software in statewide Lambert projection.

RECEIVED BY OWRD

APR 10 2017

SALEM, OR

T 12638