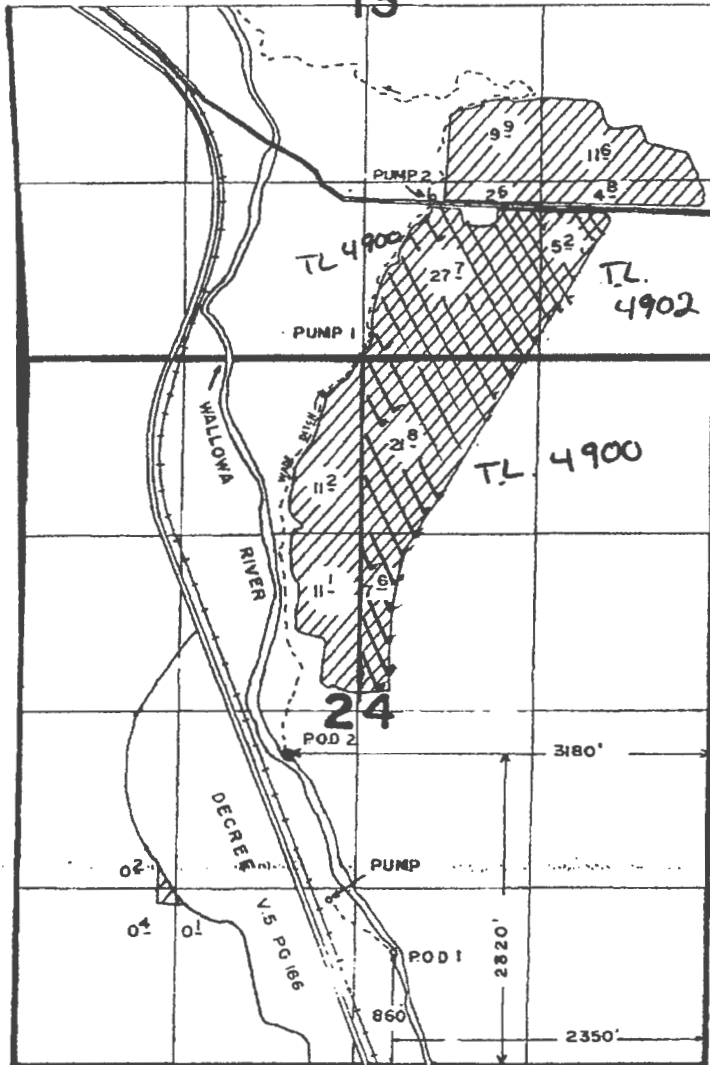



T. 1 S. R. 43 E. W.M.

13



 = Temp Transfer "OFF Lands"

T.L. 4900 + 4902
Sam + Margaret Wade.

Note: This map not intended to display Property lines.

Scale 1" = 1320'

Temp Transfer OFF map 1 of 2

RECEIVED BY OWRD

APR 17 2017

SALEM, OR

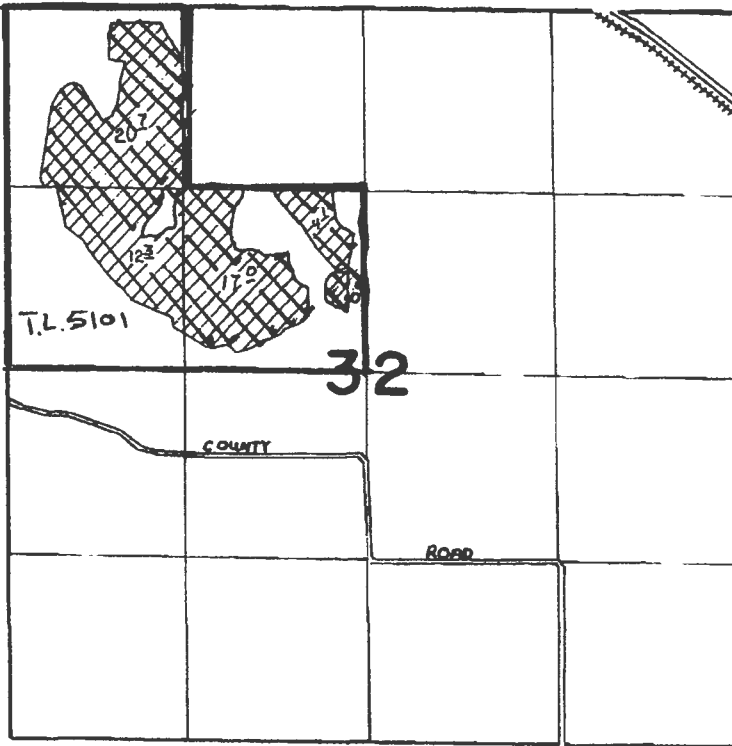
EV. 8-20-90 DSM

41063-179-654

SC

T 12643

T. 1 S. R. 44 E. W.M.

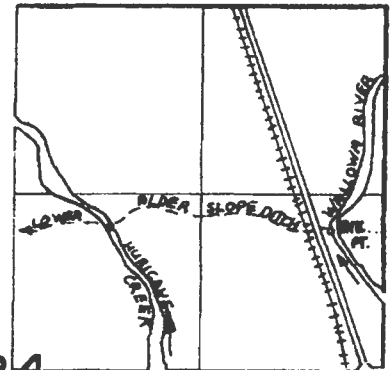


Temp Transfer
= "OFF Lands"

T.L. 5101 Brantwood L.L.C.

Note: This map not intended to display property lines.

T. 2 S. R. 44 E. W.M.



24
DIV. PT. LOCATED 390' W. AND 1030' N.
FROM E. 1/4 COR. SEC. 24

Temp Transfer OFF Map 2 of 2

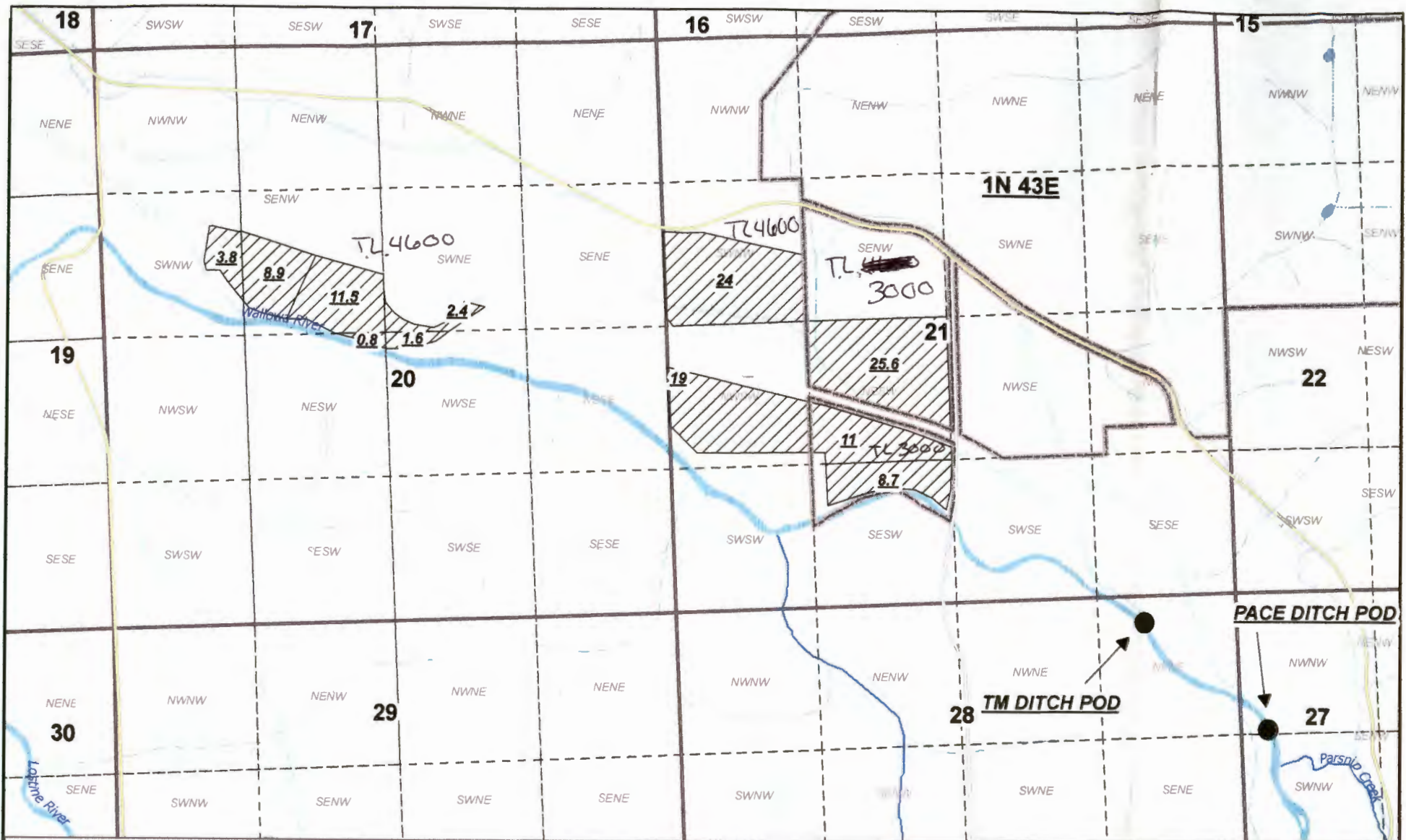
RECEIVED BY OWRD

APR 17 2017

SALEM, OR

64R 53R JS

T 2643



Gordon Wolfe 2017 Temp Transfer - "TO" LANDS

Map Disclaimer:
 This product is for informational purposes and may not have been prepared for, or be suitable for legal, engineering, or surveying purposes. Users of this information should review or consult the primary data and information sources to ascertain the usability of the information. This map is not intended to display property lines.

Disclaimer: This listing is the result of a manual search of the records of the Watermaster's Plat Cards and the WRS database. The listing has not been field checked. That a right is of record is no guarantee that it has not been abandoned under the conditions of ORS 540.010. The plat card records of listed by the 40.0 acre quarter-quarter within a section. If the water right listed within a quarter-quarter is on more than one tax lot, this office has not itemized that water rights for each tax lot - only a survey could accurately depict how much of the water rights are on each tax lot.

RECEIVED BY OWRD

APR 17 2017

SALEM, OR

 **TO LANDS**

1:15,840



District 7 Watermaster