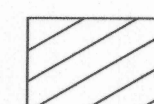
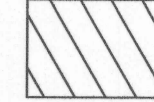

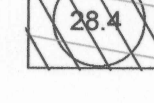
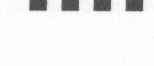


TRANSFER APPLICATION MAP
FOR THE
U.S. FISH AND WILDLIFE SERVICE,
KLAMATH BASIN NATIONAL WILDLIFE REFUGE COMPLEX
IN T. 34 & 35 S., R. 7 1/2 E., W.M.

-  A# S-7535, P# S-4791, C# 42582 AUTHORIZED PLACE OF USE
-  A# S-29718, P# S-23396, C# 42583 AUTHORIZED PLACE OF USE
-  ACREAGE TO BE TRANSFERRED (C# 42582/42583, PRI/SUPP)
-  ACREAGE TO BE TRANSFERRED (C# 42583, PRI)
-  UPPER KLAMATH LAKE NATIONAL WILDLIFE REFUGE BOUNDARY

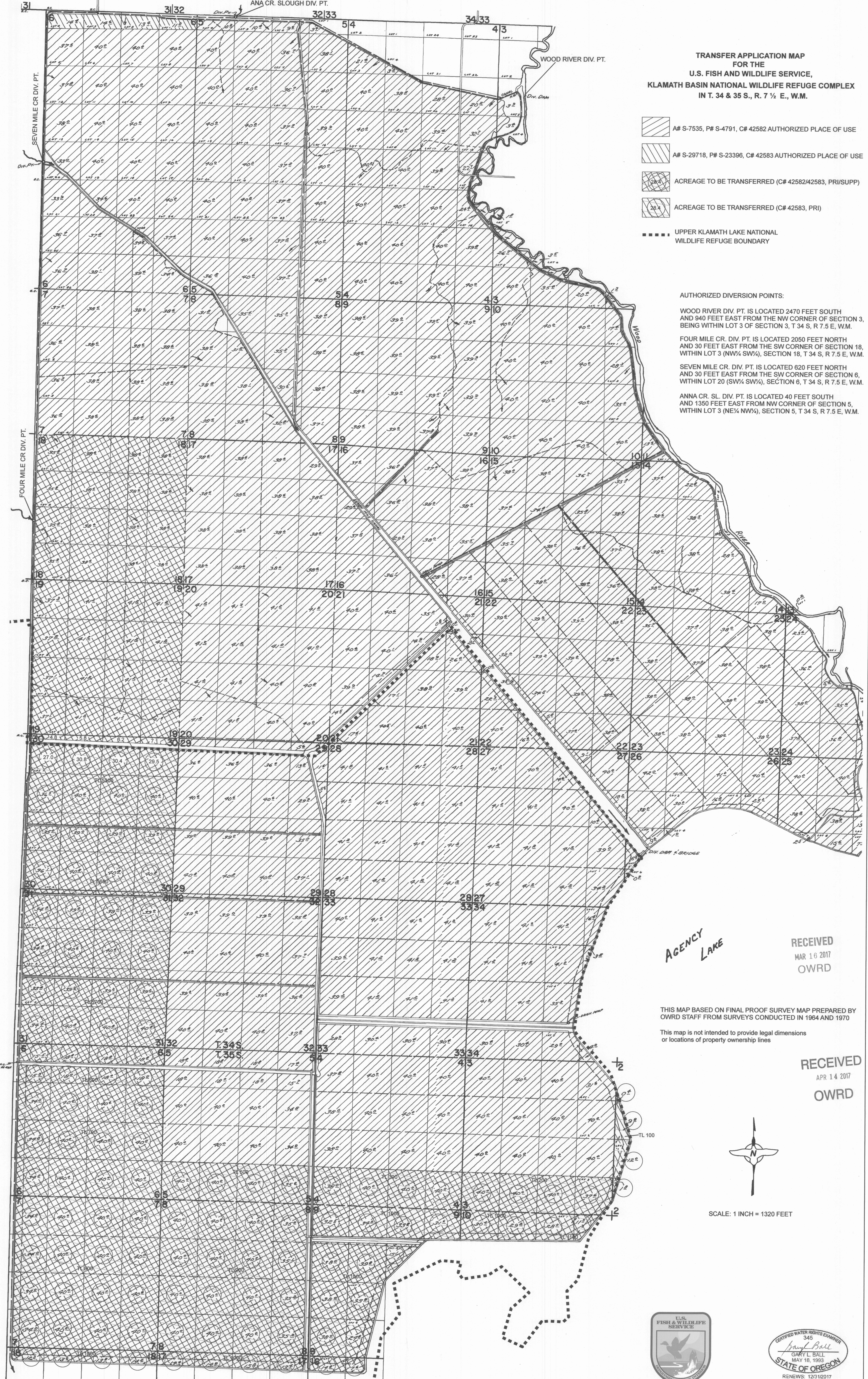
AUTHORIZED DIVERSION POINTS:

WOOD RIVER DIV. PT. IS LOCATED 2470 FEET SOUTH AND 940 FEET EAST FROM THE NW CORNER OF SECTION 3, BEING WITHIN LOT 3 OF SECTION 3, T 34 S, R 7.5 E, W.M.

FOUR MILE CR. DIV. PT. IS LOCATED 2050 FEET NORTH AND 30 FEET EAST FROM THE SW CORNER OF SECTION 18, WITHIN LOT 3 (NW 1/4 SW 1/4), SECTION 18, T 34 S, R 7.5 E, W.M.

SEVEN MILE CR. DIV. PT. IS LOCATED 620 FEET NORTH AND 30 FEET EAST FROM THE SW CORNER OF SECTION 6, WITHIN LOT 20 (SW 1/4 SW 1/4), SECTION 6, T 34 S, R 7.5 E, W.M.

ANNA CR. SL. DIV. PT. IS LOCATED 40 FEET SOUTH AND 1350 FEET EAST FROM NW CORNER OF SECTION 5, WITHIN LOT 3 (NE 1/4 NW 1/4), SECTION 5, T 34 S, R 7.5 E, W.M.

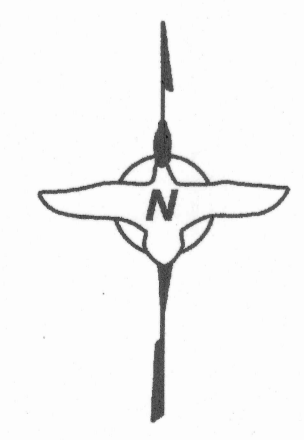


AGENCY LAKE

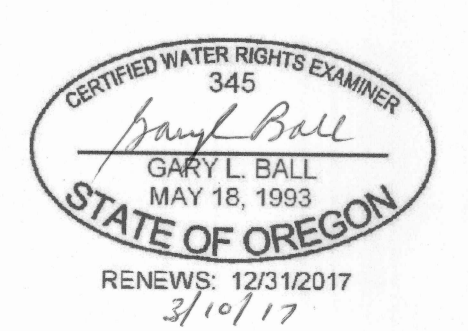
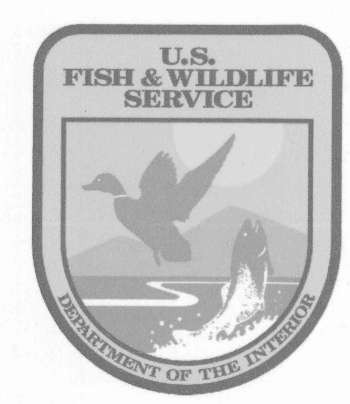
RECEIVED
MAR 16 2017
OWRD

THIS MAP BASED ON FINAL PROOF SURVEY MAP PREPARED BY
OWRD STAFF FROM SURVEYS CONDUCTED IN 1964 AND 1970
This map is not intended to provide legal dimensions
or locations of property ownership lines

RECEIVED
APR 14 2017
OWRD



SCALE: 1 INCH = 1320 FEET



T-12642