



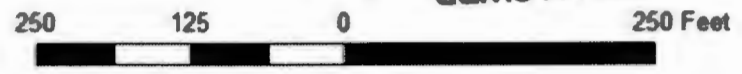
1
1
2656

Acreage Transferred ON: 2.0 ac.
Certificate - 89317
Proposed P.O.U - 1S10E07 NWNW, tl. 1502
POD 1 & 2 CERT. 89317 - MFID

MFID TRANSFER_DINN #2017_1 "ON"



PROPOSED TRANSFER "ON" 2.0 ac



Entire 2 ac. has been cleared since this 2016 aerial photo

SALEM, OR

MAY 01 2017

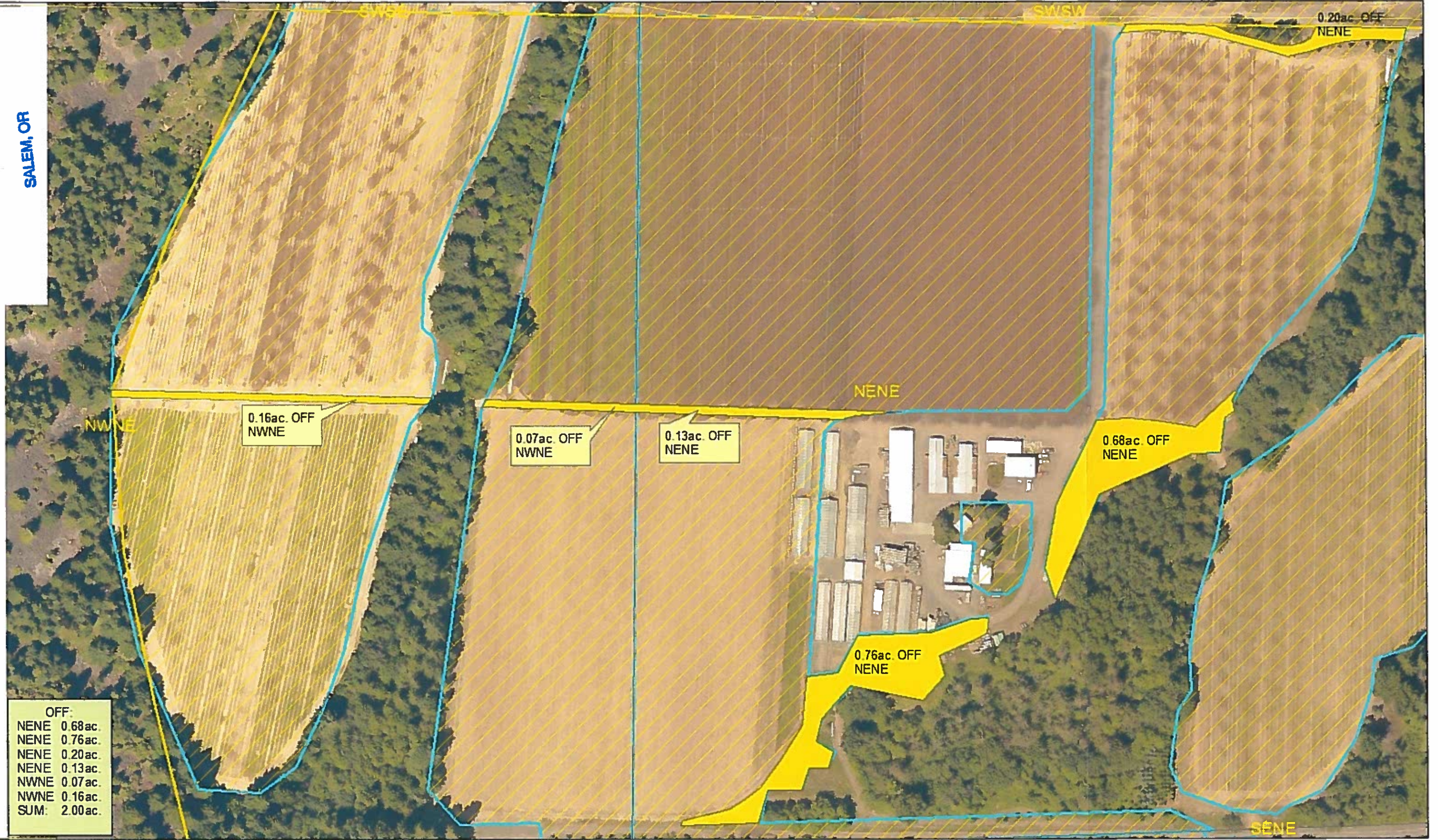
RECEIVED BY OWRD



RECEIVED BY UWRD

MAY 01 2017

SALEM, OR

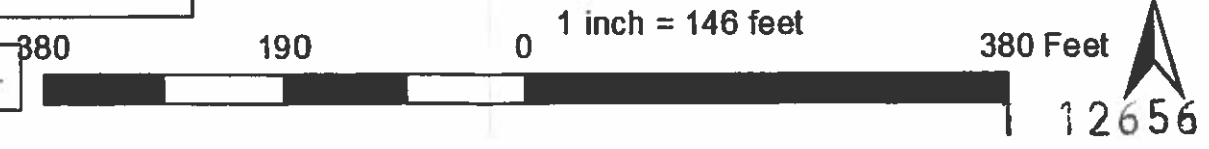


OFF:	
NENE	0.68ac.
NENE	0.76ac.
NENE	0.20ac.
NENE	0.13ac.
NWNE	0.07ac.
NWNE	0.16ac.
SUM:	2.00ac.

Acreage Transferred OFF: 2.0ac.
 Certificate - 89317
 P.O.U - NWNE,NENE 1S09E12#100
 POD 1 & 2 CERT. 89317 - MFID

MFID TRANSFER_DINN #2017_1 "OFF"

- PROPOSED TRANSFER "OFF"
- CERTIFICATE 89317 P.O.U.



MAY 01 2017

SALEM, OR

MAY 01 2017

SALEM, OR



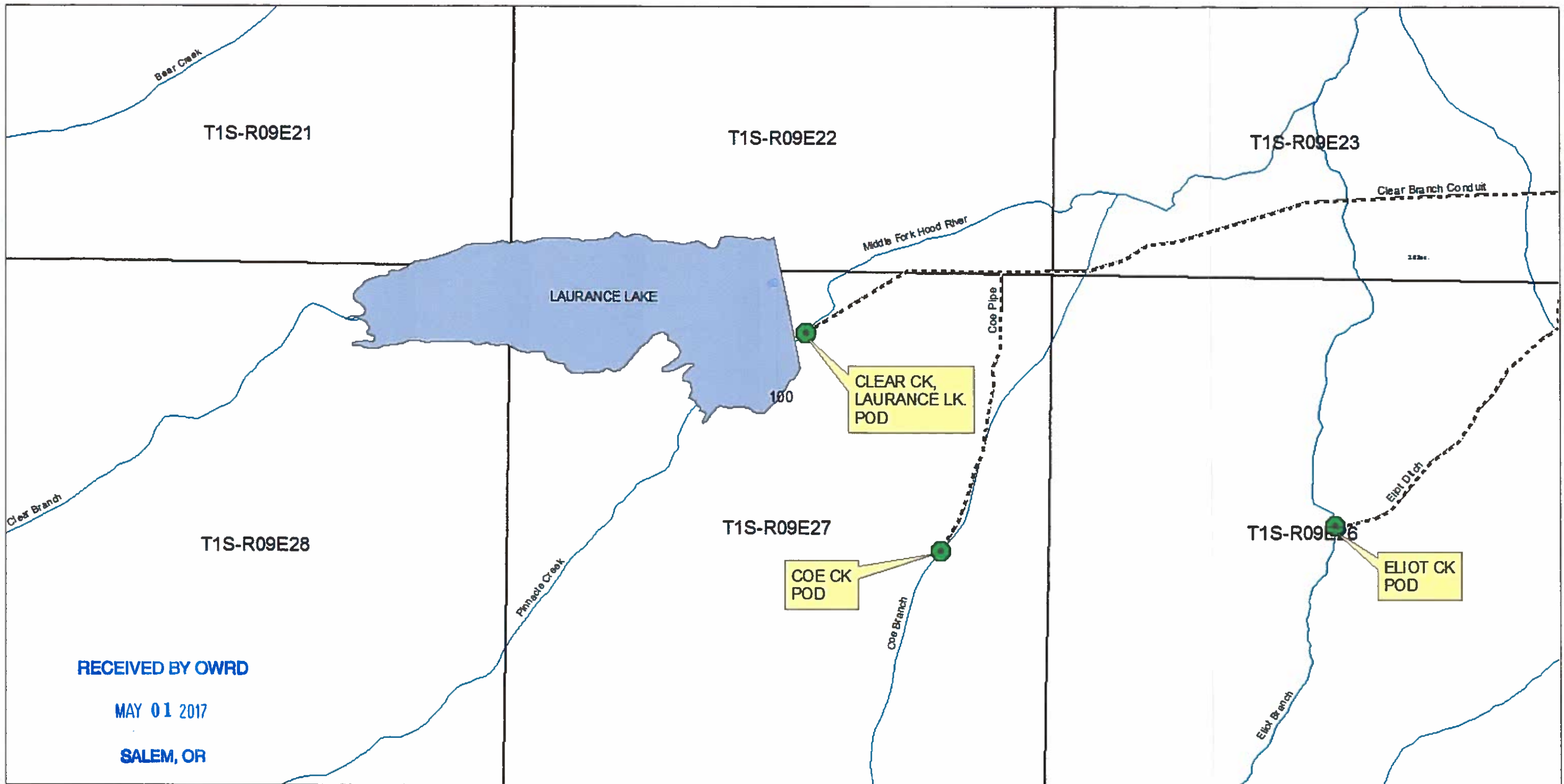
Acreage Transferred OFF: 2.0ac.
 Certificate - 89317
 POU - NWNE,NENE 1S09E12d100
 POD 1 & 2 CERT. 89317 - MFID

MFID TRANSFER_DINN #2017_1 "OFF"
CERTIFICATE 89317 REFERENCE

- PROPOSED TRANSFER "OFF"
- CERTIFICATE 89317 P.O.U.



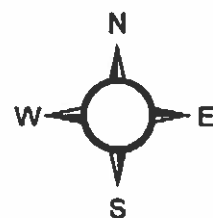
T 12656



POD DESCRIPTIONS:

CLEAR CK - 520' SOUTH, 2500' WEST from NE CORNER SECTION 27
 COE CK - 2598' SOUTH, 945' WEST from NE CORNER SECTION 27
 ELIOT CK - 2400' SOUTH, 125' EAST from N1/4 CORNER SECTION 26

1 inch = 917 feet

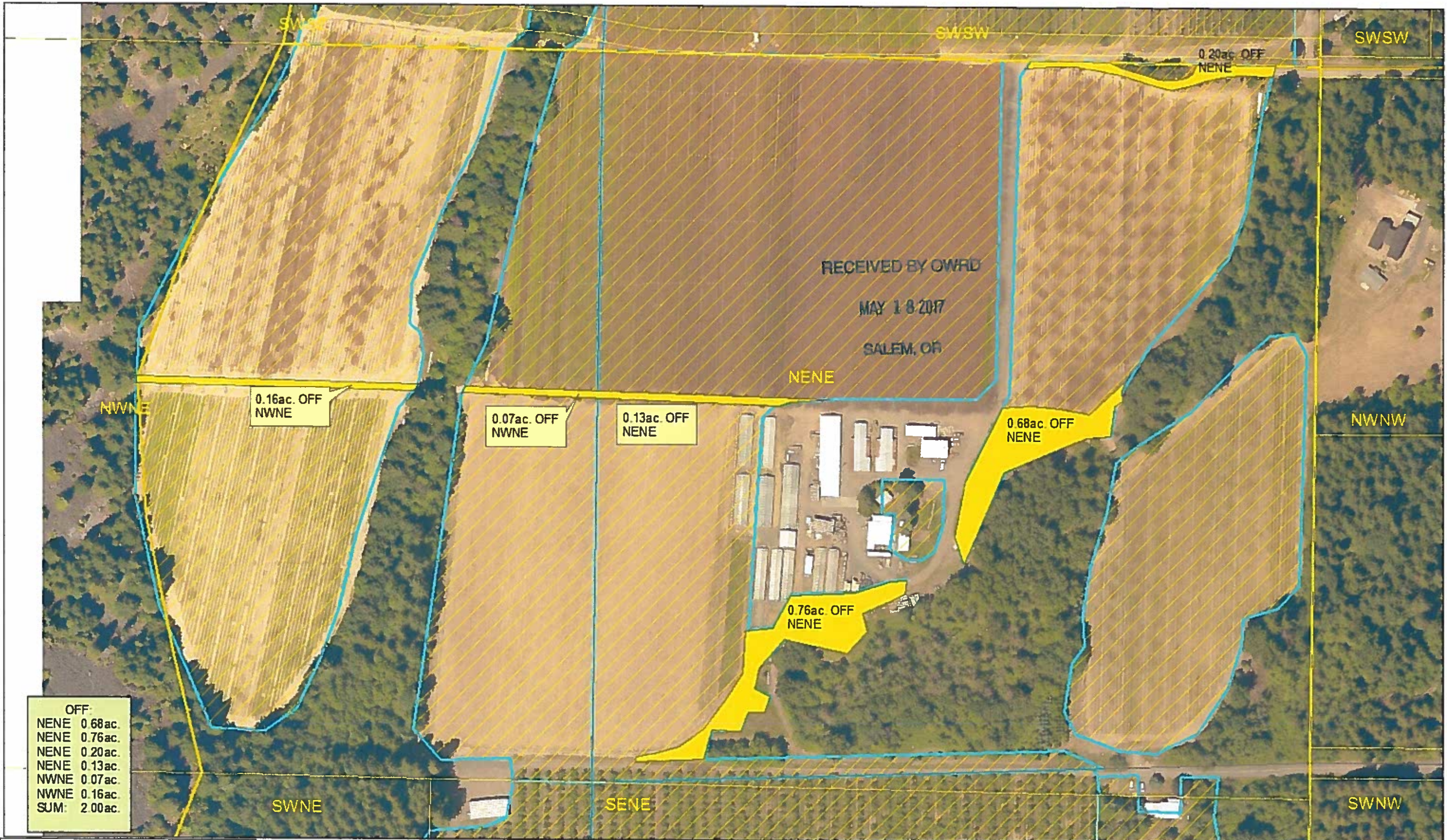


**MIDDLEFORK IRRIGATION DISTRICT
 PERMANENT TRANSFER MAP
 POD DESCRIPTIONS**

MFID D.I.N.N. 2017_1

Legend

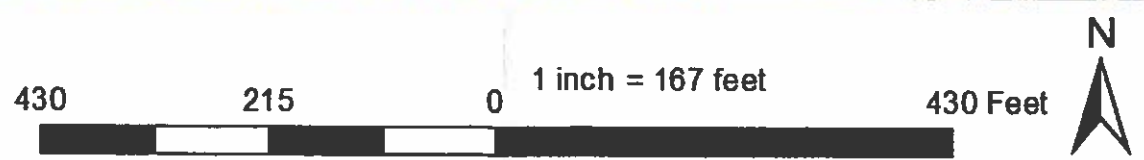
- POD
- Coe_Pipe
- Clear_Branch_Conduit
- CERT. 46268, 74264



Acreage Transferred OFF: 2.0ac.
Certificate - 89317,89320,89321
P.O.U - NWNE,NENE 1S09E12#100
POD 1 & 2_89317, POD 1_89320,
POD 1_89321

MFID TRANSFER_DINN #2017_1 "OFF"
TRANSFER T-12656

- PROPOSED TRANSFER "OFF"
- CERT 89317,89320,89321 P.O.U.



721-1



 -PROPOSED TRANSFER "ON" 2.0 ac.

TRANSFER_T-12656

MFID TRANSFER_DINN #2017_1 "ON"

Acreage Transferred ON: 2.0 ac.
 Certificate - 89317, 89320, 89321
 Proposed P.O.U - 1S10E07 NWNW, tl.1502
 POD 1 & 2 - 89317, POD 1 - 89320, POD 1 - 89321

