

DESCHUTES COUNTY SEC.27 T14S R13E

RECEIVED BY OWRD

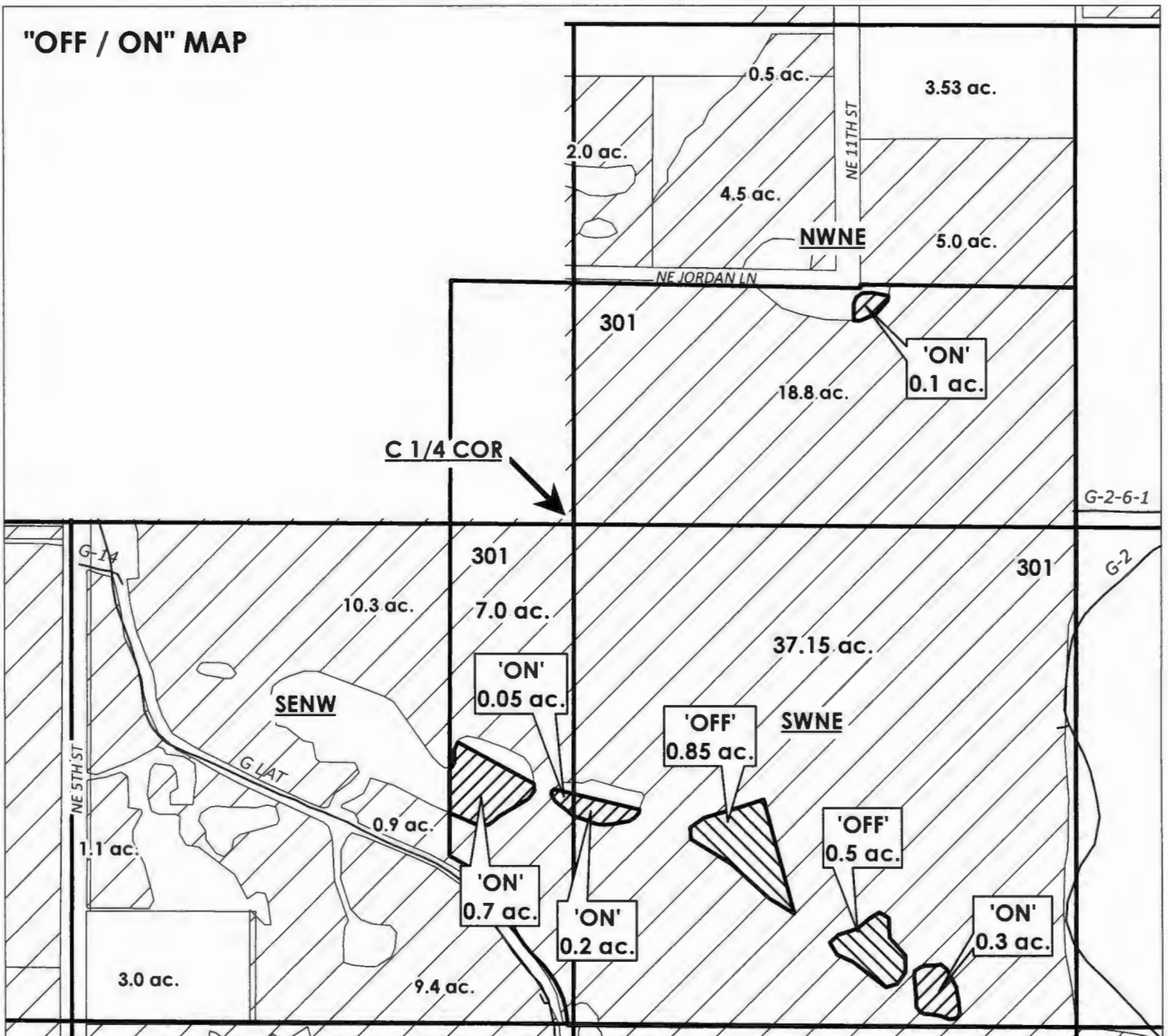
SCALE - 1" = 400'

JUN 22 2017

SALEM, OR



NW 1/4 OF THE NE 1/4; SW 1/4 OF THE NE 1/4; SE 1/4 OF THE NW 1/4



APPLICATION FOR WATER RIGHTS TRANSFER

GARY CAROLLE ARNETT / GARY CAROLLE ARNETT

TAXLOT #: 301

T: 12701

1.35 ACRES

DESCHUTES COUNTY SEC.31 T14S R13E

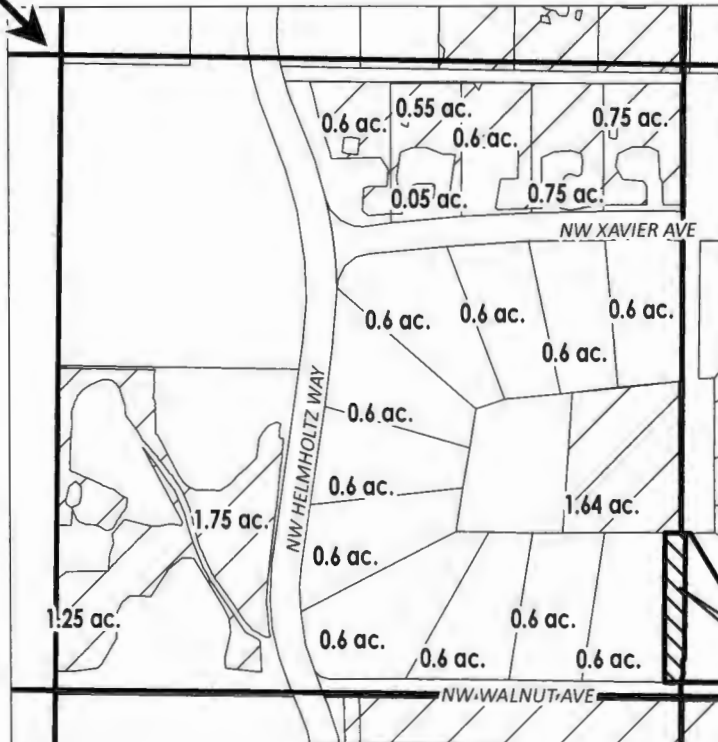
SCALE - 1" = 400'



NW 1/4 OF THE SE 1/4

DISTRICT INTERNAL
NOTICE #: T-2017-002

C 1/4 COR



RECEIVED BY OWRD

JUN 22 2017

SALEM, OR

"OFF" MAP

	EXISTING WATER RIGHTS
	OFF LANDS
	PARCELS W/ WATER RIGHTS



APPLICATION FOR WATER RIGHTS TRANSFER

SAM E. & LINDA D. ERICKSON / SAM E. & LINDA D. ERICKSON

TAXLOT #: 1900
T: 12701

0.4 ACRES

Date: 2/2/2017

FILE: I:\TRANSFER\WRTRANS\17\T-2017-002\141331_NWSE

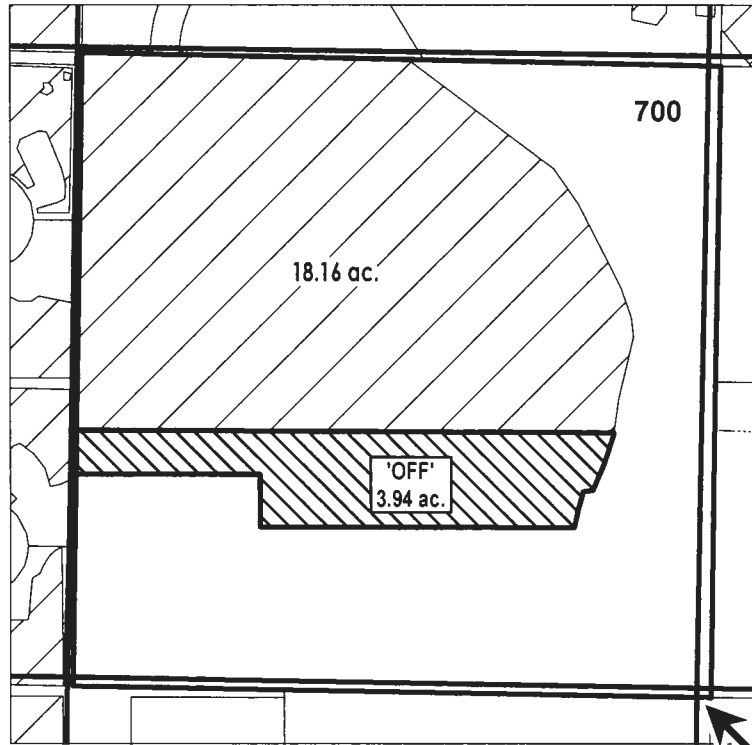
DESCHUTES COUNTY SEC.31 T14S R13E

SCALE - 1" = 400'



SE 1/4 OF THE NE 1/4

DISTRICT INTERNAL
NOTICE #: T-2017-003

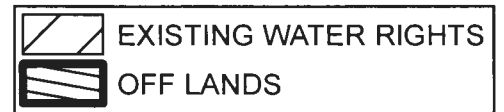


RECEIVED BY OWRD

JUN 22 2017

SALEM, OR

E 1/4 COR



"OFF" MAP



APPLICATION FOR WATER RIGHTS TRANSFER
COID QUITCLAIM / JOSHUA J. & GUINEVERE B. KUTELLA

TAXLOT #: 700

3.94 ACRES

T 12701

Date: 1/23/2017

FILE: I:\TRANSFER\WR\TRANS17\T-2017-003\141331_SENE

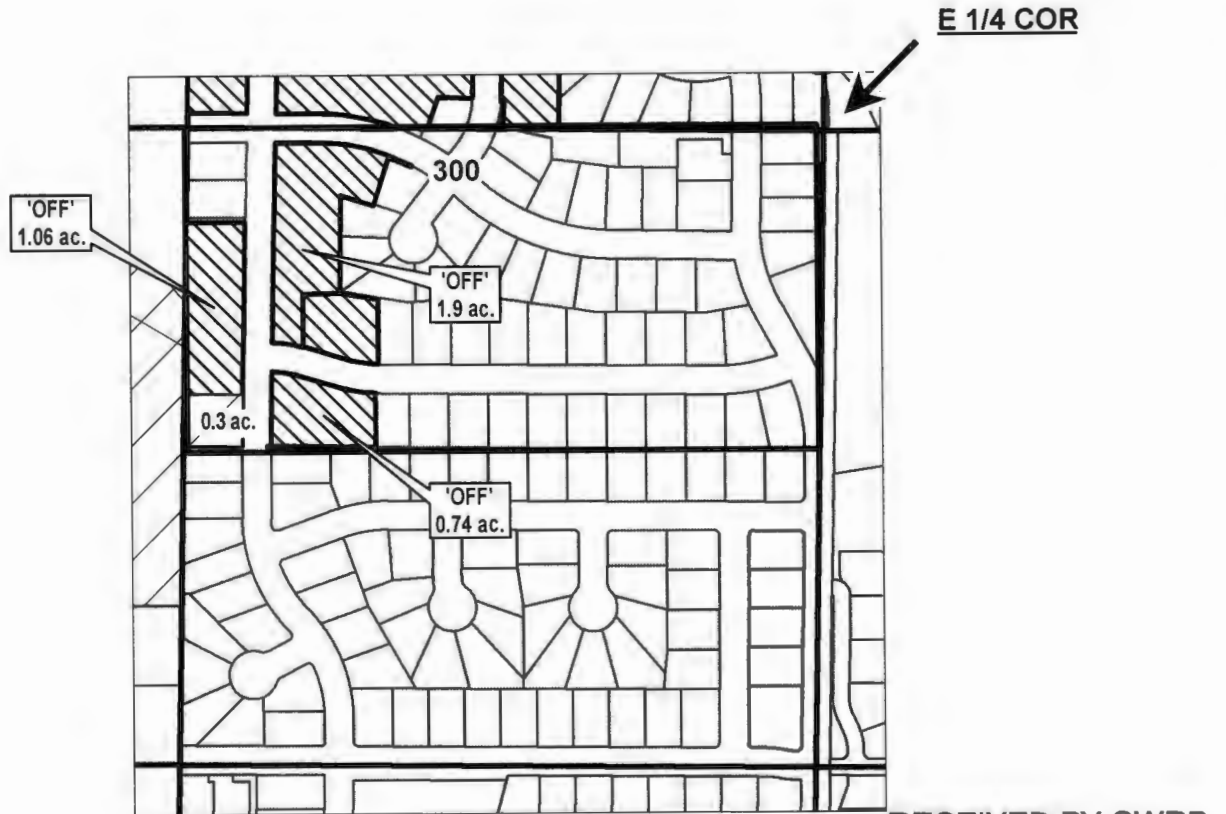
DESCHUTES COUNTY SEC.05 T15S R13E

SCALE - 1" = 400'



NE 1/4 OF THE SE 1/4

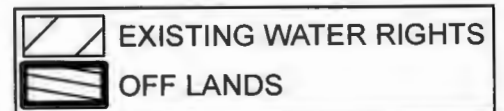
DISTRICT INTERNAL
NOTICE #: T-2017-003



RECEIVED BY OWRD

JUN 22 2017

SALEM, OR



"OFF" MAP



APPLICATION FOR WATER RIGHTS TRANSFER
COID QUITCLAIM / JOSHUA J. & GUINEVERE B. KUTELLA

TAXLOT #: 300

3.7 ACRES

DATE: 1/26/2017

T: 12701

FILE: I:\TRANSFER\WRTRANS17\T-2017-003\151305_NESE

DESCHUTES COUNTY SEC.20 T15S R13E

SCALE - 1" = 400'



NW 1/4 OF THE NW 1/4

DISTRICT INTERNAL
NOTICE #: T-2017-003

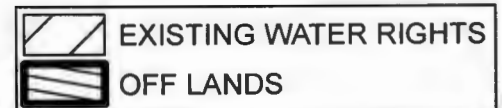


RECEIVED BY OWRD

JUN 22 2017

SALEM, OR

"OFF" MAP



APPLICATION FOR WATER RIGHTS TRANSFER
COID QUITCLAIM / JOSHUA J. & GUINEVERE B. KUTELLA

TAXLOT #: 201

1.86 ACRES

T 12701

Date: 1/23/2017

FILE: I:\TRANSFER\WRTRANS17\T-2017-003\151320_NWNW

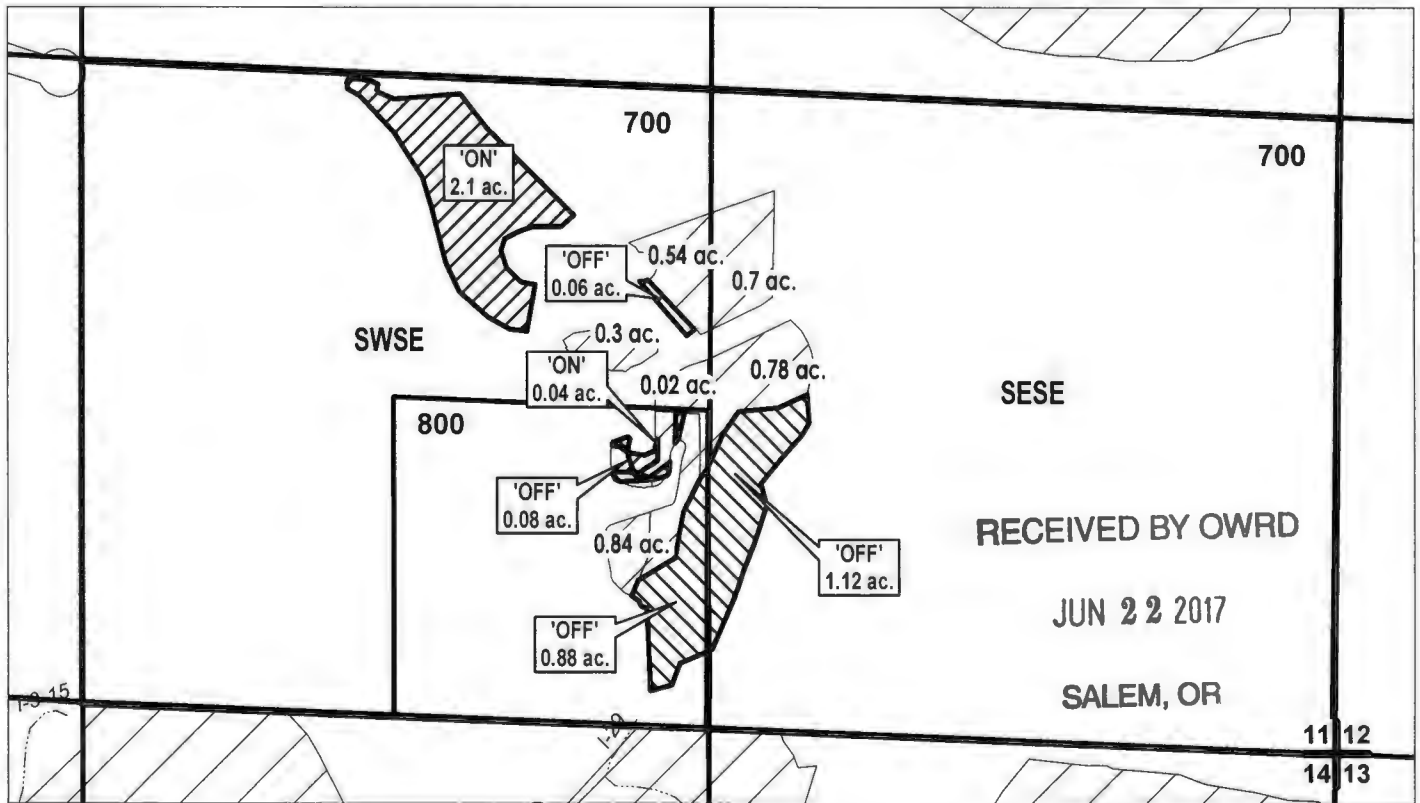
DESCHUTES COUNTY SEC.11 T17S R14E

SCALE - 1" = 400'

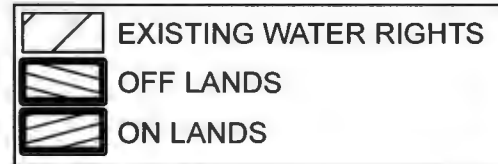


SW 1/4 OF THE SE 1/4; SE 1/4 OF THE SE 1/4

DISTRICT INTERNAL
NOTICE #: T-2017-001



"OFF / ON" MAP



APPLICATION FOR WATER RIGHTS TRANSFER

RICKEY & CARRIE DICE / RICKEY & CARRIE DICE

TAXLOT #: 700, 800

2.14 ACRES

Date: 1/31/2017

T. 12701

FILE: I:\TRANSFER\WR\TRANS17\T-2017-001\171411_SSE

DESCHUTES COUNTY SEC.25 T17S R14E

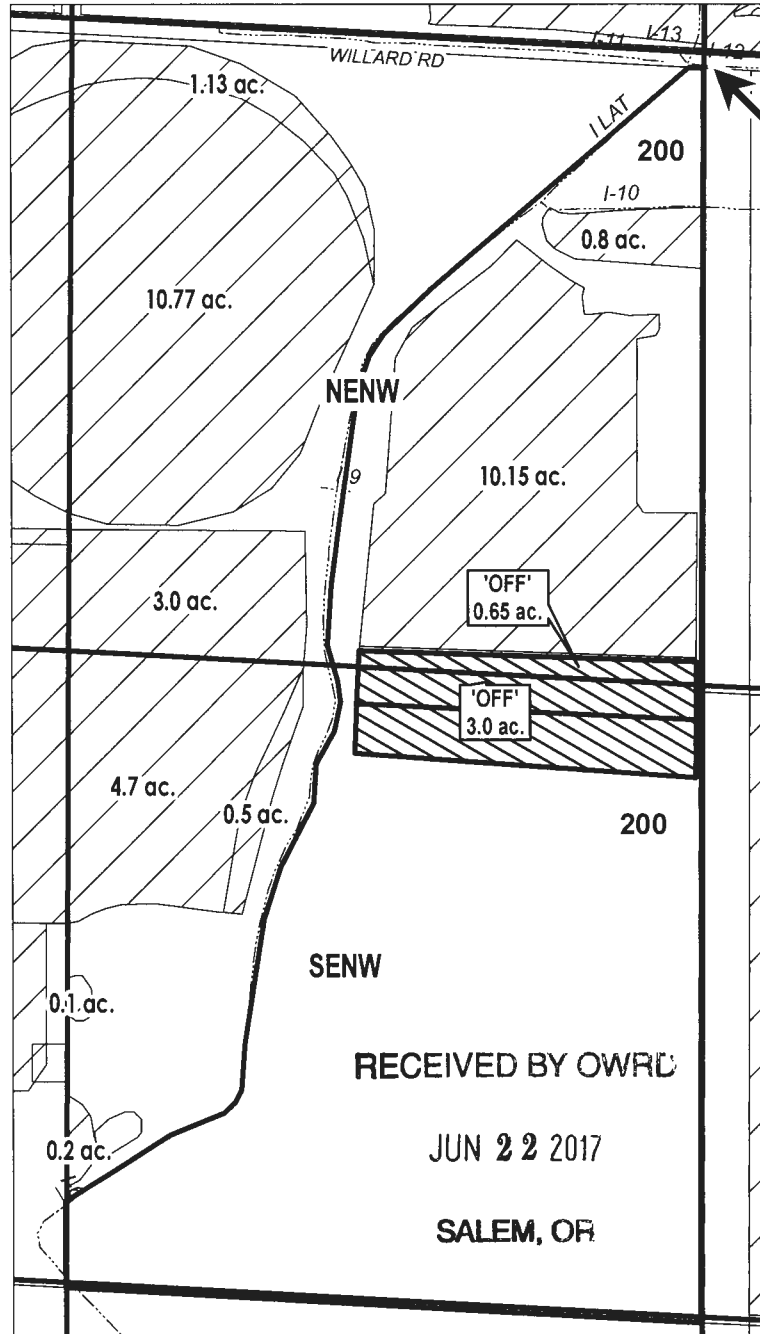
SCALE - 1" = 400'



NE 1/4 OF THE NW 1/4; SE 1/4 OF THE NW 1/4

DISTRICT INTERNAL
NOTICE #: T-2017-009

-  EXISTING WATER RIGHTS
-  OFF LANDS



"OFF" MAP



APPLICATION FOR WATER RIGHTS TRANSFER

ROBERT D. & HELEN D. TATE / VARIOUS

TAXLOT #: 200

3.65 ACRES

Date: 4/4/2017

T 12701

FILE: I:\TRANSFER\WRTRANS\17T-2017-009\171425_ENW

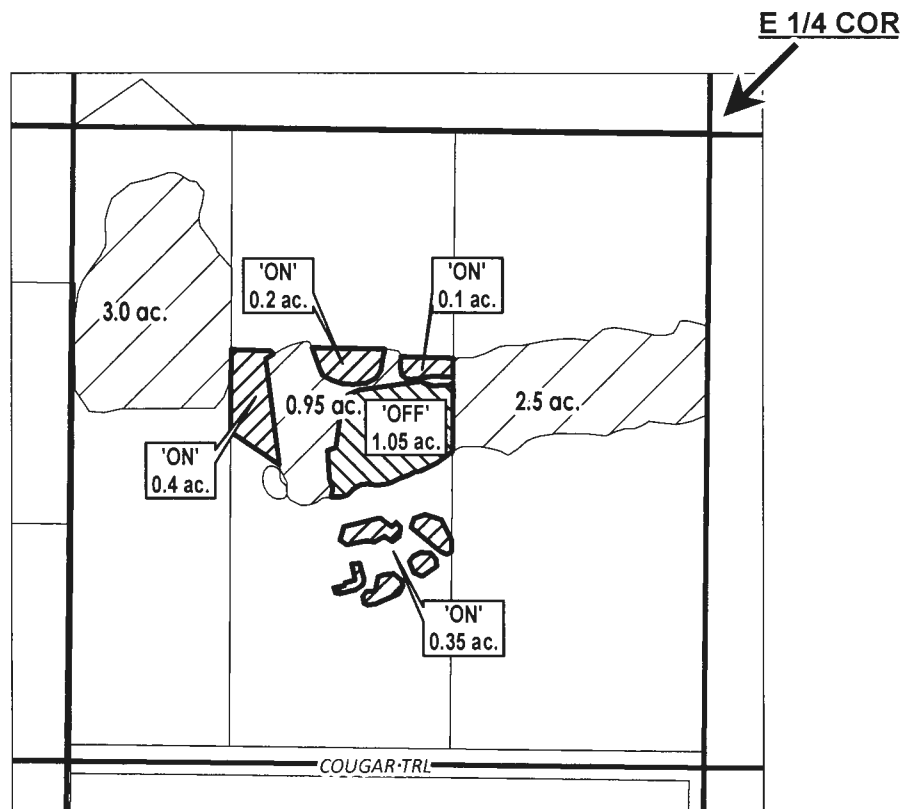
DESCHUTES COUNTY SEC.02 T18S R13E

SCALE - 1" = 400'



NE 1/4 OF THE SE 1/4

DISTRICT INTERNAL
NOTICE #: T-2017-002



RECEIVED BY OWRD

JUN 22 2017

SALEM, OR

"OFF / ON" MAP



APPLICATION FOR WATER RIGHTS TRANSFER

MICHAEL CRABTREE / MICHAEL CRABTREE

TAXLOT #: 101

T. 12701

1.05 ACRES

Date: 2/28/2017

FILE: I:\TRANSFER\WRTRANS17\T-2017-002\181302_NESE

DESCHUTES COUNTY SEC.10 T18S R13E

RECEIVED BY OWRD

SCALE - 1" = 400'

JUN 22 2017

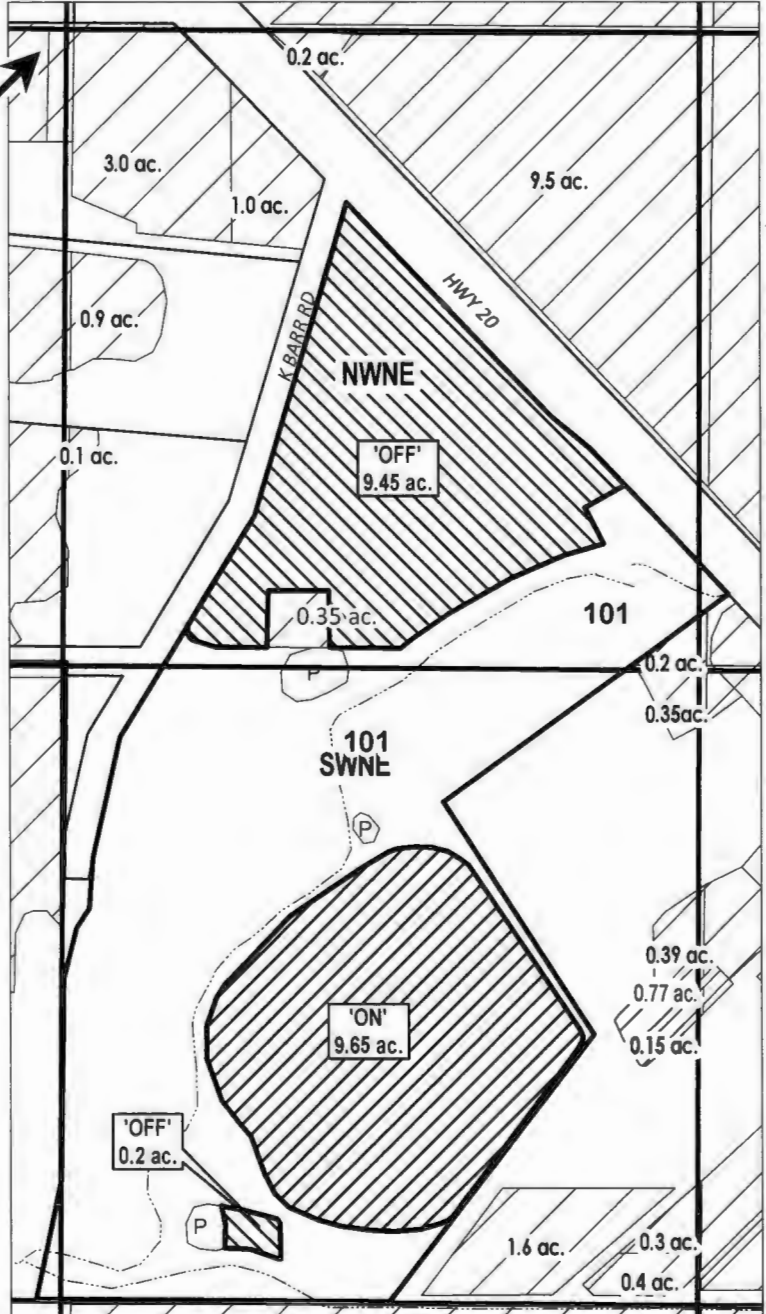


SALEM, OR

NW 1/4 OF THE NE 1/4; SW 1/4 OF THE NE 1/4

DISTRICT INTERNAL
NOTICE #: T-2017-006

N 1/4 COR



"OFF / ON" MAP

-  EXISTING WATER RIGHTS
-  OFF LANDS
-  ON LANDS



APPLICATION FOR WATER RIGHTS TRANSFER

KENNETH LEMOINE / KENNETH LEMOINE

TAXLOT #: 101

9.65 ACRES

T 12701

DATE: 4/6/2017

FILE: I:\TRANSFER\WRTRANS17181310_WNE

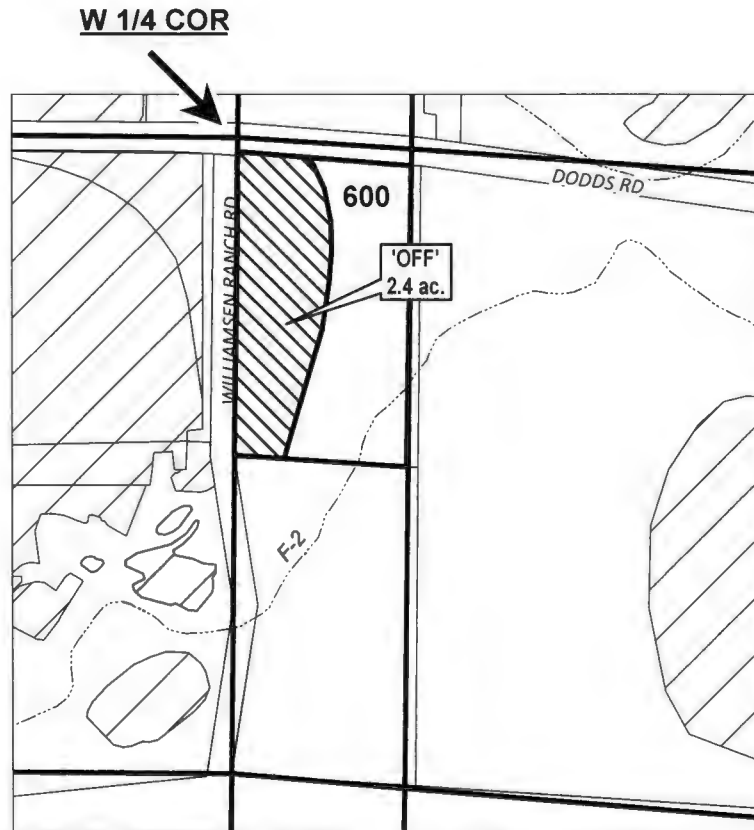
DESCHUTES COUNTY SEC.07 T18S R14E

SCALE - 1" = 400'



NW 1/4 OF THE SW 1/4

DISTRICT INTERNAL
NOTICE #: T-2017-011



RECEIVED BY OWRD

JUN 22 2017

SALEM, OR

"OFF" MAP



APPLICATION FOR WATER RIGHTS TRANSFER
DONALD W. & JERI L. BRADETICH / DONALD W. & JERI L. BRADETICH

TAXLOT #: 600

2.4 ACRES

T. 12701

Date: 4/11/2017

FILE: I:\TRANSFER\WRTRANS17\T-2017-011\181407_NWSW

DESCHUTES COUNTY SEC.27 T14S R13E

RECEIVED BY OWRD

JUN 22 2017

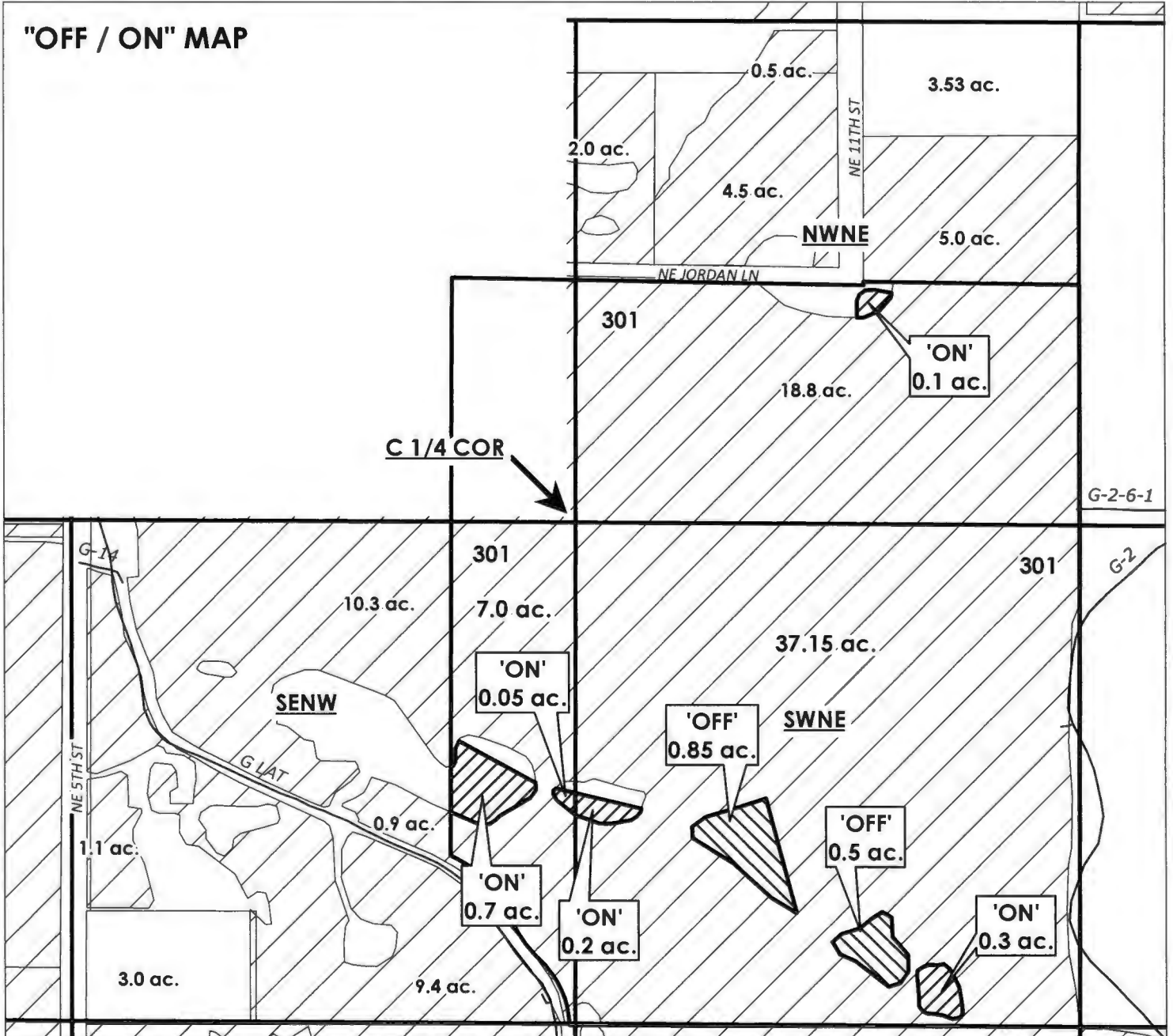
SCALE - 1" = 400'

SALEM, OR



NW 1/4 OF THE NE 1/4; SW 1/4 OF THE NE 1/4; SE 1/4 OF THE NW 1/4

"OFF / ON" MAP



APPLICATION FOR WATER RIGHTS TRANSFER

GARY CAROLLE ARNETT / GARY CAROLLE ARNETT

TAXLOT #: 301

T 12701

1.35 ACRES

DESCHUTES COUNTY SEC.31 T14S R13E

RECEIVED BY OWRD

SCALE - 1" = 400'

JUN 22 2017

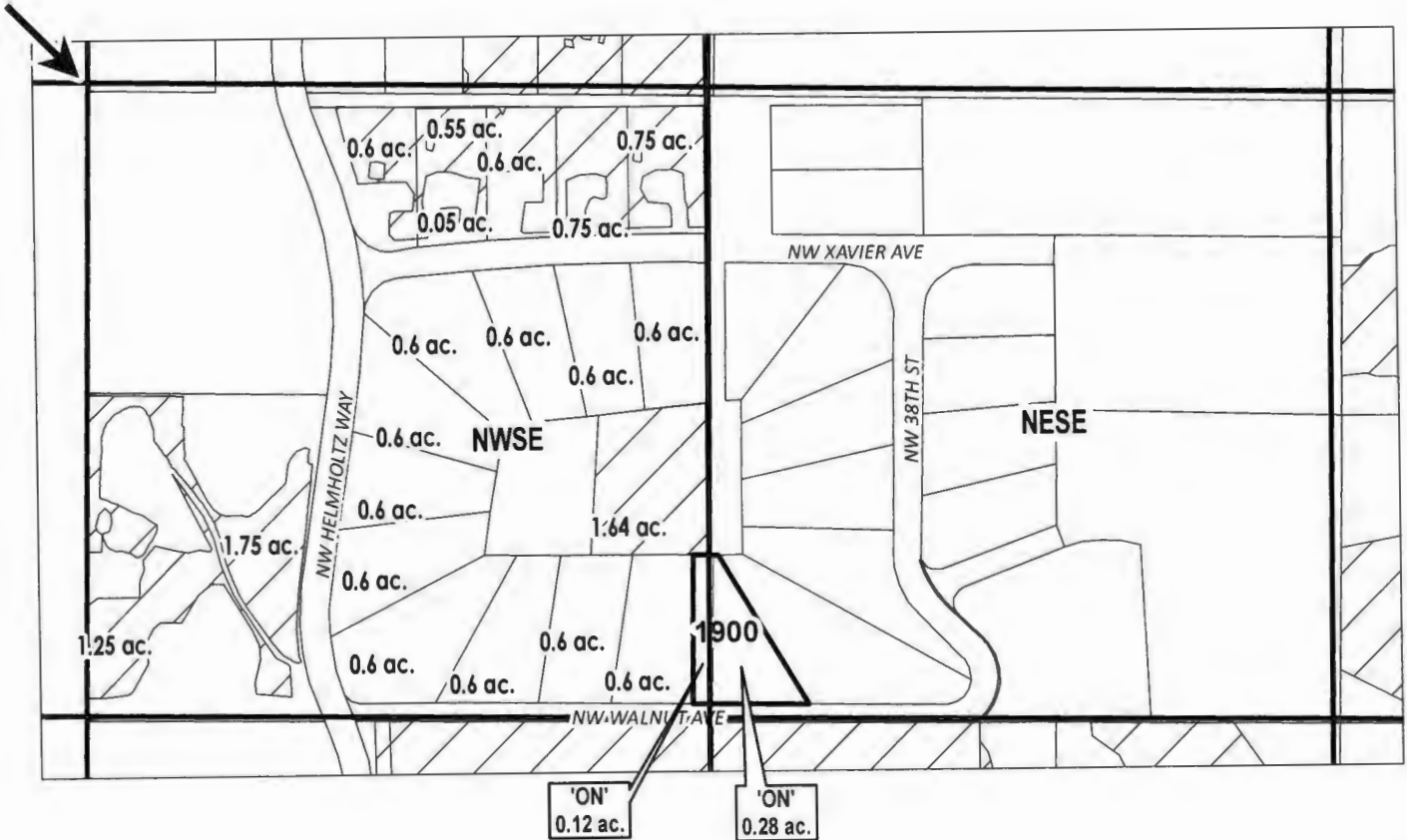


SALEM, OR

NW 1/4 OF THE SE 1/4; NE 1/4 OF THE SE 1/4

DISTRICT INTERNAL
NOTICE #: T-2017-002

C 1/4 COR



	EXISTING WATER RIGHTS
	'OFF' LAND PARCELS
	PARCELS W/ WATER RIGHTS

"ON" MAP

APPLICATION FOR WATER RIGHTS TRANSFER

SAM E. & LINDA D. ERICKSON / SAM E. & LINDA D. ERICKSON

TAXLOT #: 1900

0.4 ACRES

T. 12701

FILE: I:\TRANSFER\WRTRANS17\T-2017-002\141331_NWSE_ON



Date: 2/2/2017

DESCHUTES COUNTY SEC.12 T16S R12E

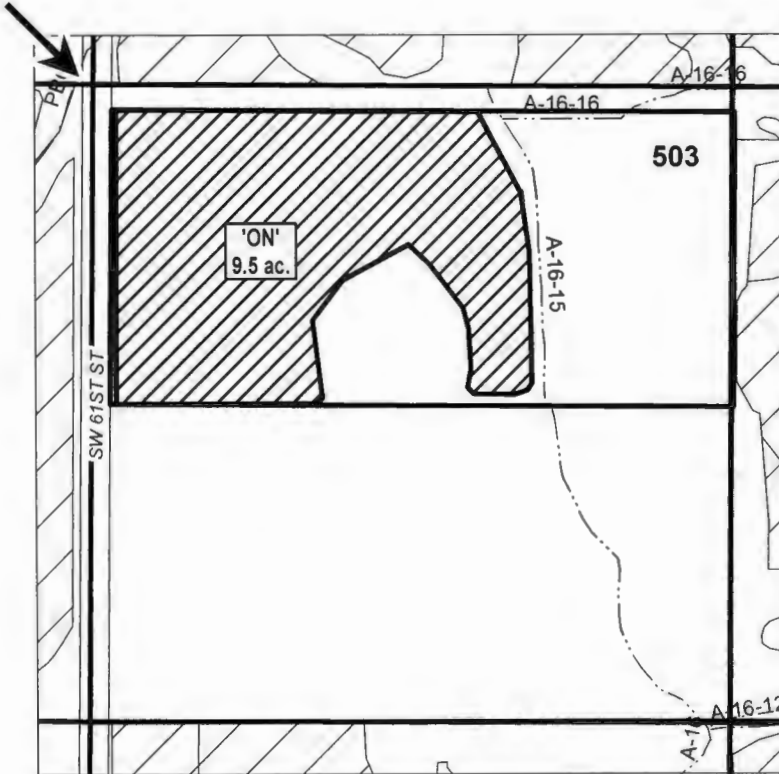
SCALE - 1" = 400'



NW 1/4 OF THE SW 1/4

DISTRICT INTERNAL
NOTICE #: T-2017-003

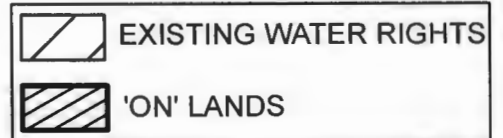
W 1/4 COR



RECEIVED BY OWRD

JUN 22 2017

SALEM, OR



"ON" MAP



APPLICATION FOR WATER RIGHTS TRANSFER
COID QUITCLAIMS / JOSHUA J. & GUINEVERE B. KUTELLA

TAXLOT #: 503

9.5 ACRES

T 12701

Date: 1/23/2017

FILE: I:\TRANSFER\WRTRANS17\T-2017-003\161212_NWSW

DESCHUTES COUNTY SEC.11 T17S R14E

RECEIVED BY OWRD

SCALE - 1" = 400'

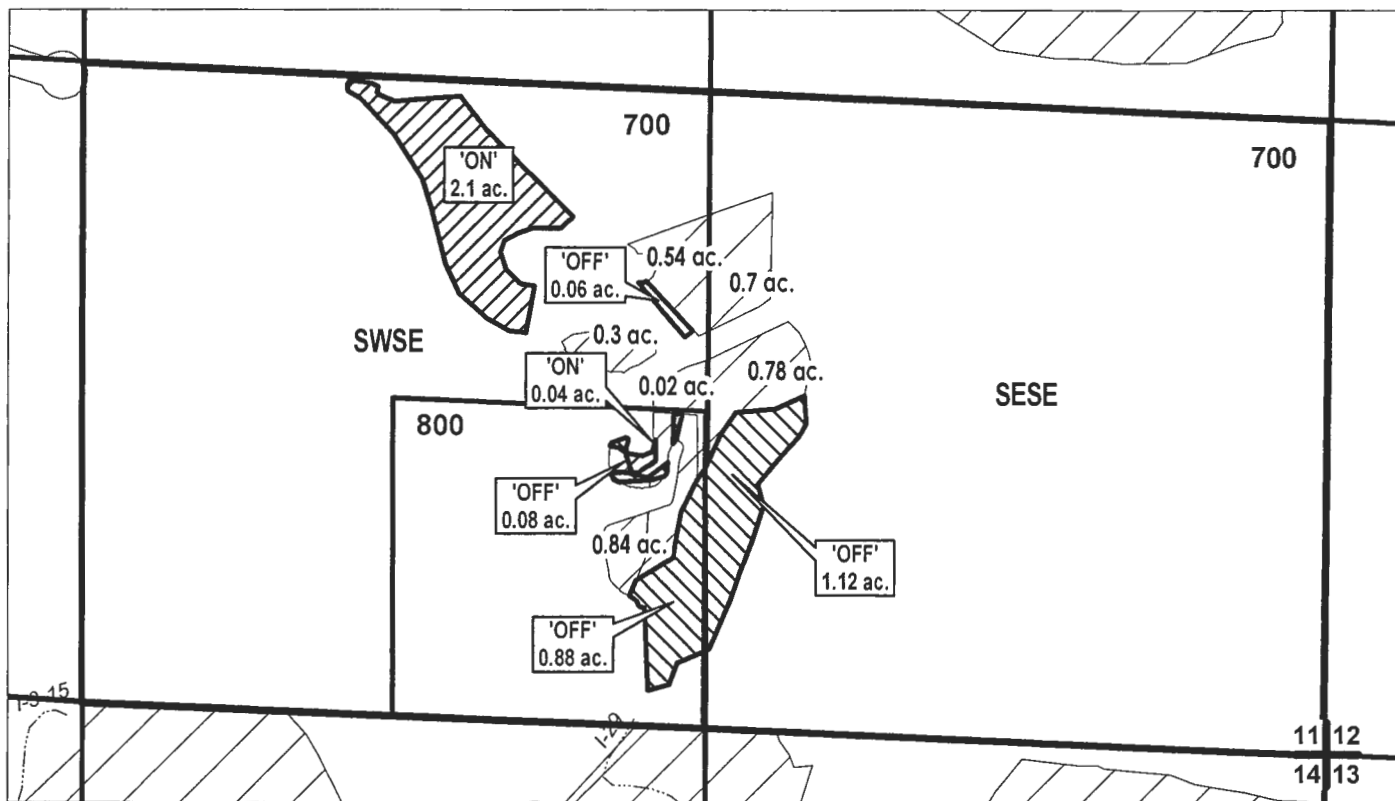
JUN 22 2017



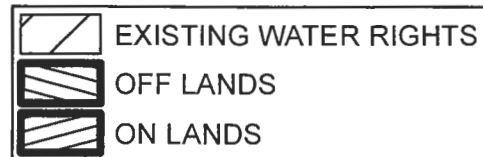
SALEM, OR

SW 1/4 OF THE SE 1/4; SE 1/4 OF THE SE 1/4

DISTRICT INTERNAL
NOTICE #: T-2017-001



"OFF / ON" MAP



APPLICATION FOR WATER RIGHTS TRANSFER

RICKEY & CARRIE DICE / RICKEY & CARRIE DICE

TAXLOT #: 700, 800 2.14 ACRES

T 12701

Date: 1/31/2017

FILE: I:\TRANSFER\WRTRANS17\T-2017-001\171411_SSE

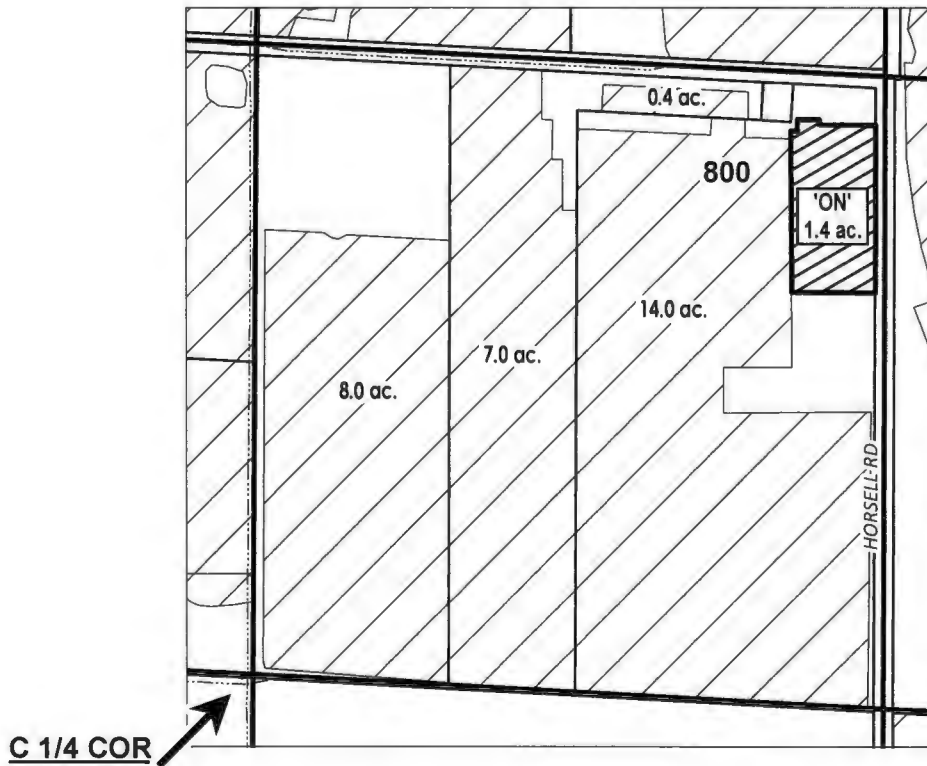
DESCHUTES COUNTY
SEC.24 T17S R14E

SCALE - 1" = 400'



SW 1/4 OF THE NE 1/4

DISTRICT INTERNAL
NOTICE #: T-2017-009



RECEIVED BY OWRD

JUN 22 2017

SALEM, OR

"ON" MAP

	EXISTING WATER RIGHTS
	'ON' LANDS



APPLICATION FOR WATER RIGHTS TRANSFER

ROBERT D. & HELEN D. TATE / IRIS MARIE & MICKEL MYRI CRAWFORD

TAXLOT #: 800

1.4 ACRES

T 12701

DATE: 4/4/2017

FILE: I:\TRANSFER\WRTRANS17\T-2017-009\171424_SWNE

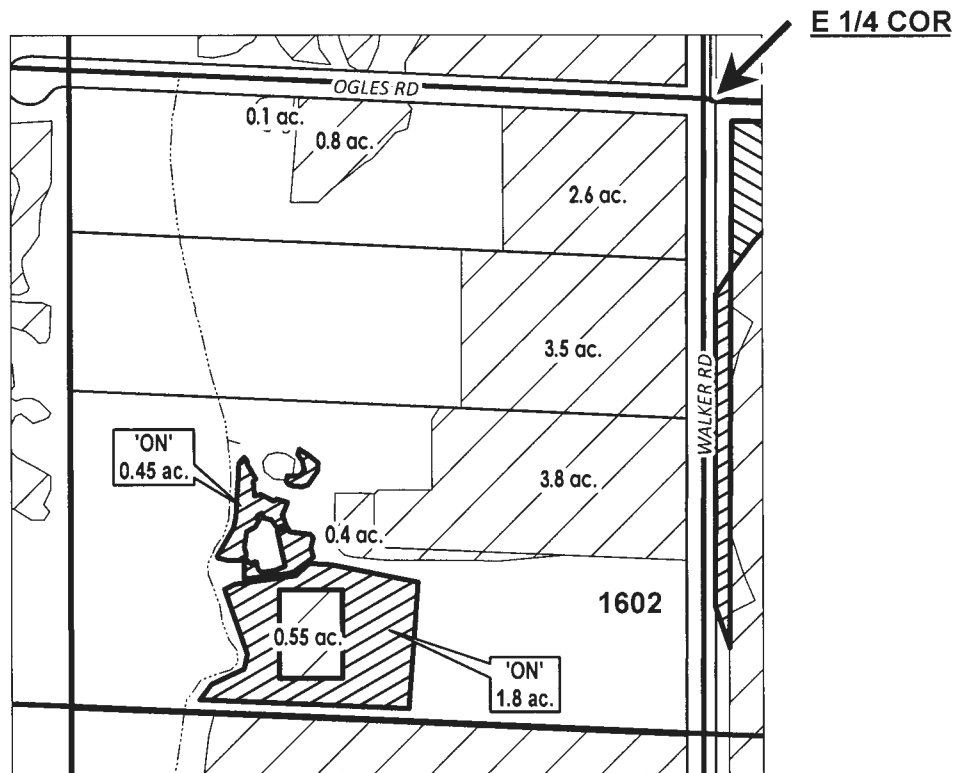
DESCHUTES COUNTY SEC.27 T17S R14E

SCALE - 1" = 400'



NE 1/4 OF THE SE 1/4

DISTRICT INTERNAL
NOTICE #: T-2017-009

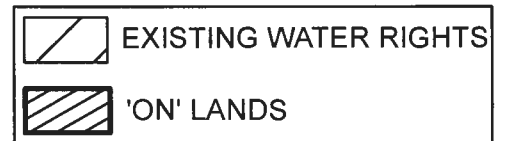


RECEIVED BY OWRD

JUN 22 2017

SALEM, OR

"ON" MAP



APPLICATION FOR WATER RIGHTS TRANSFER

ROBERT D. & HELEN D. TATE / THOMAS SOLITZ

TAXLOT #: 1602 2.25 ACRES ON

T 12701

DATE: 4/4/2017

FILE: I:\TRANSFER\WRTRANS17\T-2017-009\171427_NESE

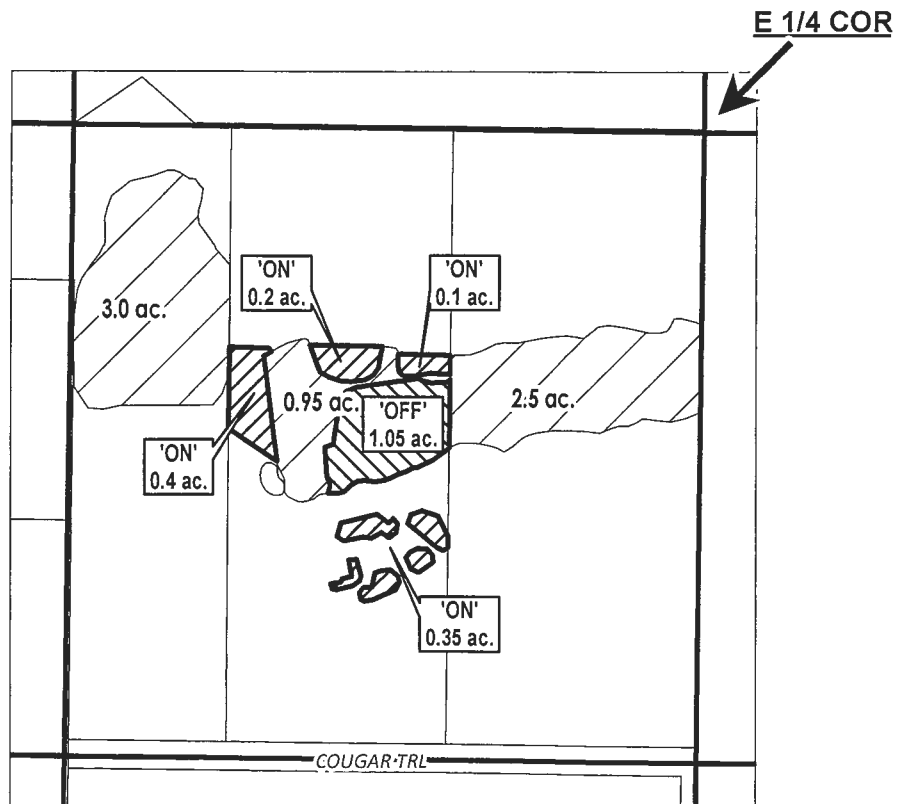
DESCHUTES COUNTY SEC.02 T18S R13E

SCALE - 1" = 400'



NE 1/4 OF THE SE 1/4

DISTRICT INTERNAL
NOTICE #: T-2017-002



RECEIVED BY OWRD

JUN 22 2017

SALEM, OR

"OFF / ON" MAP



APPLICATION FOR WATER RIGHTS TRANSFER

MICHAEL CRABTREE / MICHAEL CRABTREE

TAXLOT #: 101 T 12701 1.05 ACRES

Date: 2/28/2017

FILE: I:\TRANSFER\WRTRANS17\T-2017-002\181302_NESE

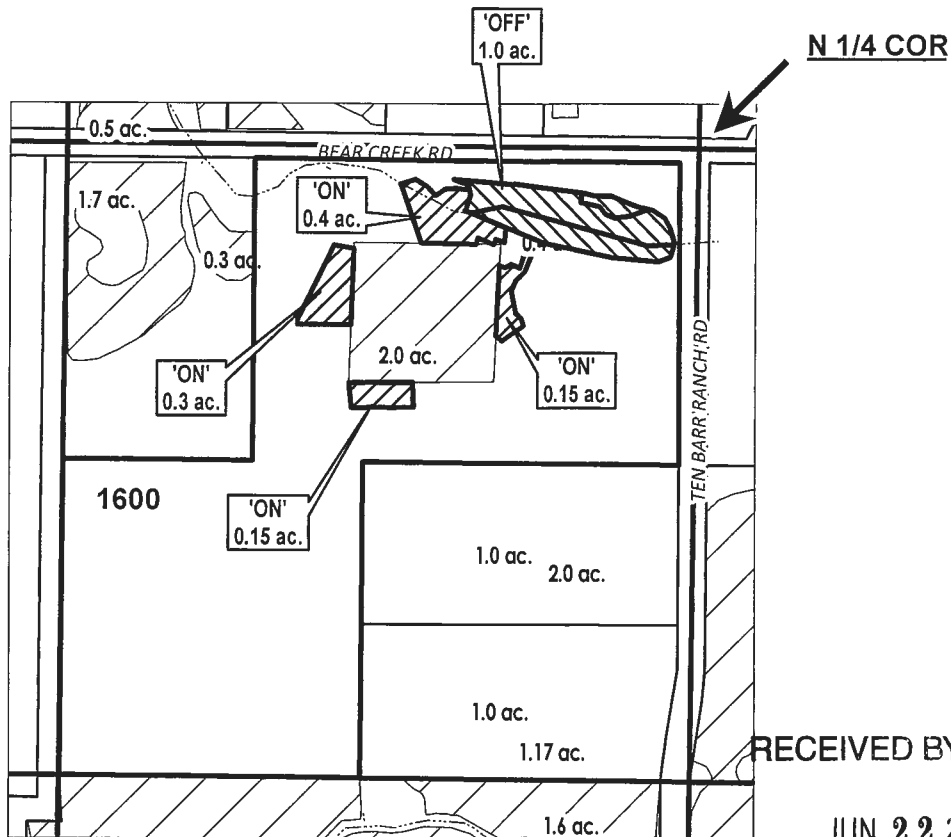
DESCHUTES COUNTY SEC.03 T18S R13E

SCALE - 1" = 400'



NE 1/4 OF THE NW 1/4

DISTRICT INTERNAL
NOTICE #: T-2017-005



RECEIVED BY OWRD

JUN 22 2017

SALEM, OR

	EXISTING WATER RIGHTS
	PARCELS W/ WATER RIGHTS
	OFF LANDS
	ON LANDS

"OFF / ON" MAP



APPLICATION FOR WATER RIGHTS TRANSFER

NAME: LORI A. CABANA, TRUSTEE

TAXLOT #: 1600

1.0 ACRES

T 12701

DATE: 3/19/2017

FILE: I:\TRANSFER\WRTRANS17181303_NENW

DESCHUTES COUNTY SEC.10 T18S R13E

RECEIVED BY OWRD

JUN 22 2017

SCALE - 1" = 400'

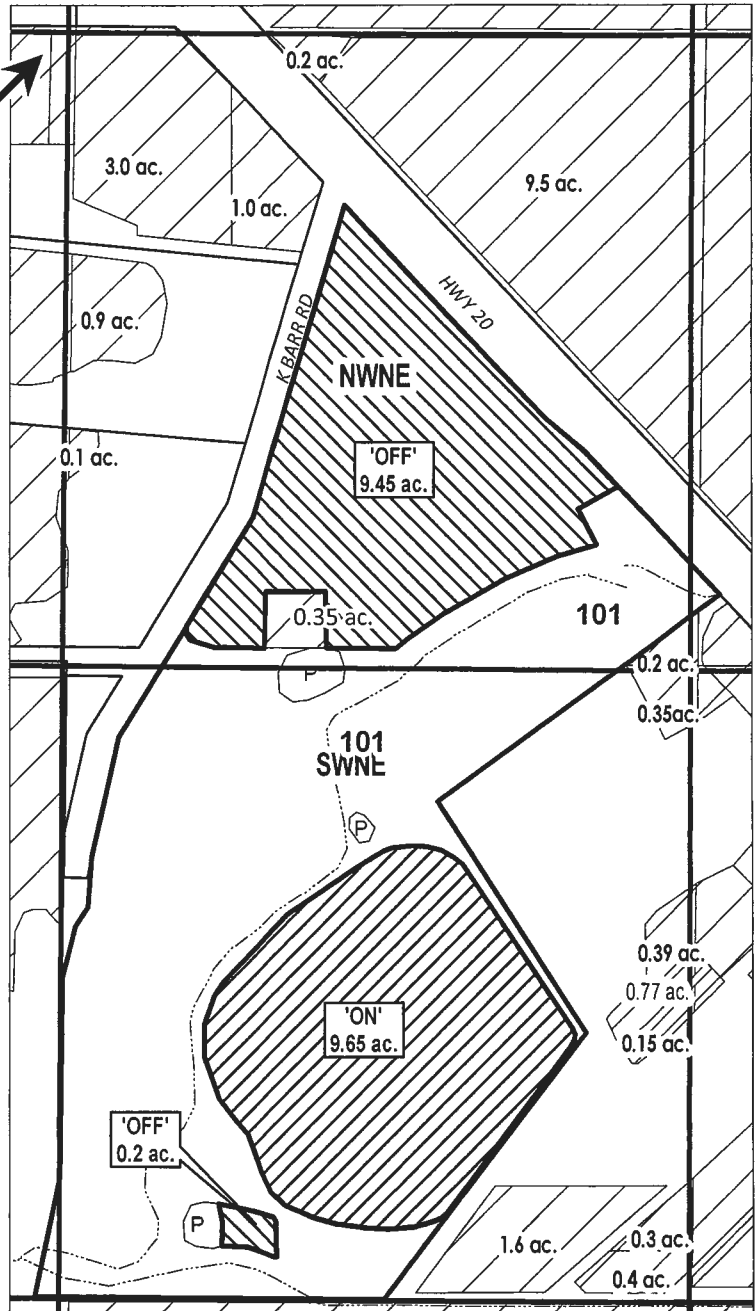
SALEM, OR



NW 1/4 OF THE NE 1/4; SW 1/4 OF THE NE 1/4

DISTRICT INTERNAL
NOTICE #: T-2017-006

N 1/4 COR →



"OFF / ON" MAP

	EXISTING WATER RIGHTS
	OFF LANDS
	ON LANDS



APPLICATION FOR WATER RIGHTS TRANSFER

KENNETH LEMOINE / KENNETH LEMOINE

TAXLOT #: 101 T 12701 9.65 ACRES

DATE: 4/6/2017

FILE: I:\TRANSFER\WR\TRANS17\1181310_WNE

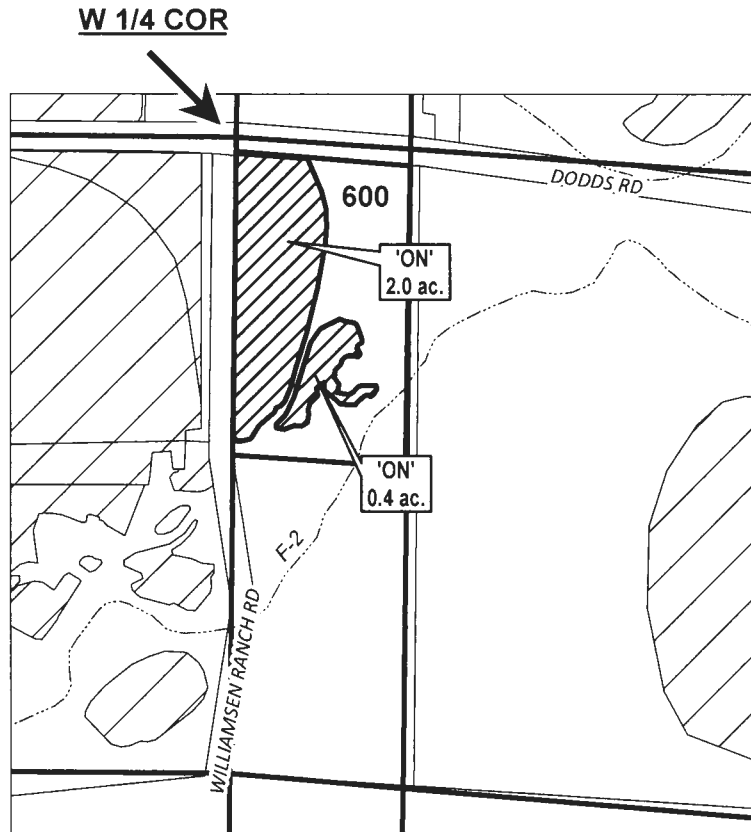
DESCHUTES COUNTY SEC.07 T18S R14E

SCALE - 1" = 400'



NW 1/4 OF THE SW 1/4

DISTRICT INTERNAL
NOTICE #: T-2017-011

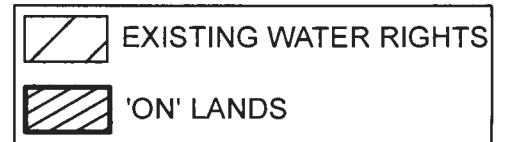


RECEIVED BY OWRD

JUN 22 2017

SALEM, OR

"ON" MAP



APPLICATION FOR WATER RIGHTS TRANSFER
DONALD W. & JERI L. BRADETICH / DONALD W. & JERI L. BRADETICH

TAXLOT #: 600

T 12701

2.4 ACRES

Date: 4/11/2017

FILE: I:\TRANSFER\WRTRANS17\T-2017-011\181407_NWSW_ON