

TRANSFER MAP FOR
DEVER FARMS, INC
JUNE 16, 2016
SCALE: 1" = 1320' 0"

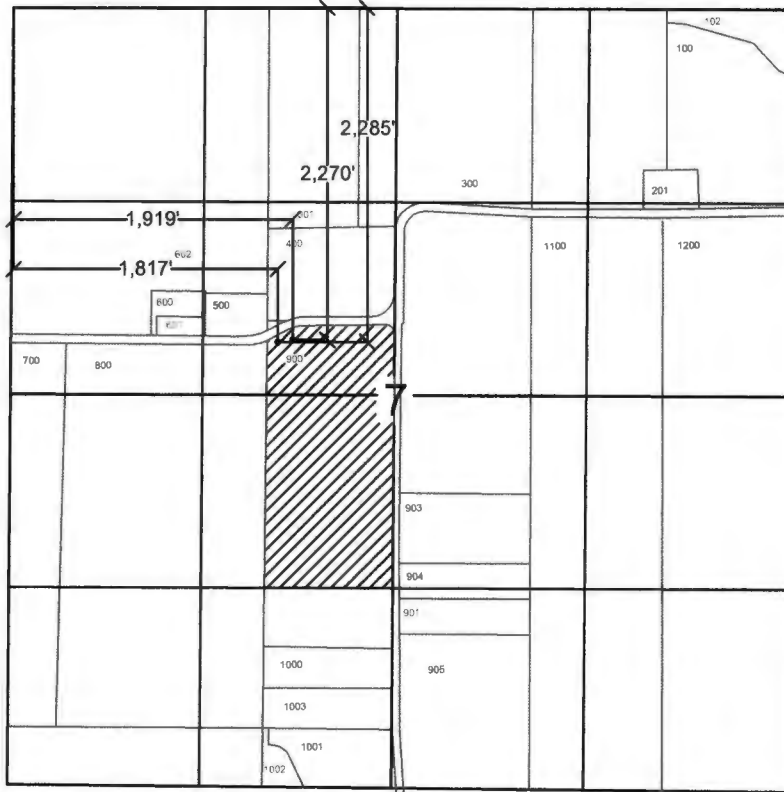
 SIGNIFIES AREA OF POINT OF USE

TRANSFER APPLICATION MAP: CERTIFICATE 27413



NOTE: MAP IS FOR SOLE PURPOSE
OF IDENTIFYING LOCATION OF WATER
RIGHT AND HAS NO INTENT TO DIMENSION
OR LOCATE ANY PROPERTY OWNERSHIP LINES

TOWNSHIP 10S, RANGE 3W, W.M.



RECEIVED BY OWRD

SEP 25 2017

SALEM, OR

NOTE:

THE EXISTING POA IS 1,817' WEST AND 2,285' SOUTH FROM THE NW CORNER OF TOWNSHIP 10S, RANGE 3W, SECTION 7.

THE NEW POA IS 1,919' WEST AND 2,270' SOUTH FROM THE NW CORNER OF TOWNSHIP 10S, RANGE 3W, SECTION 7.

RECEIVED BY OWRD

AUG 28 2017

SALEM, OR

