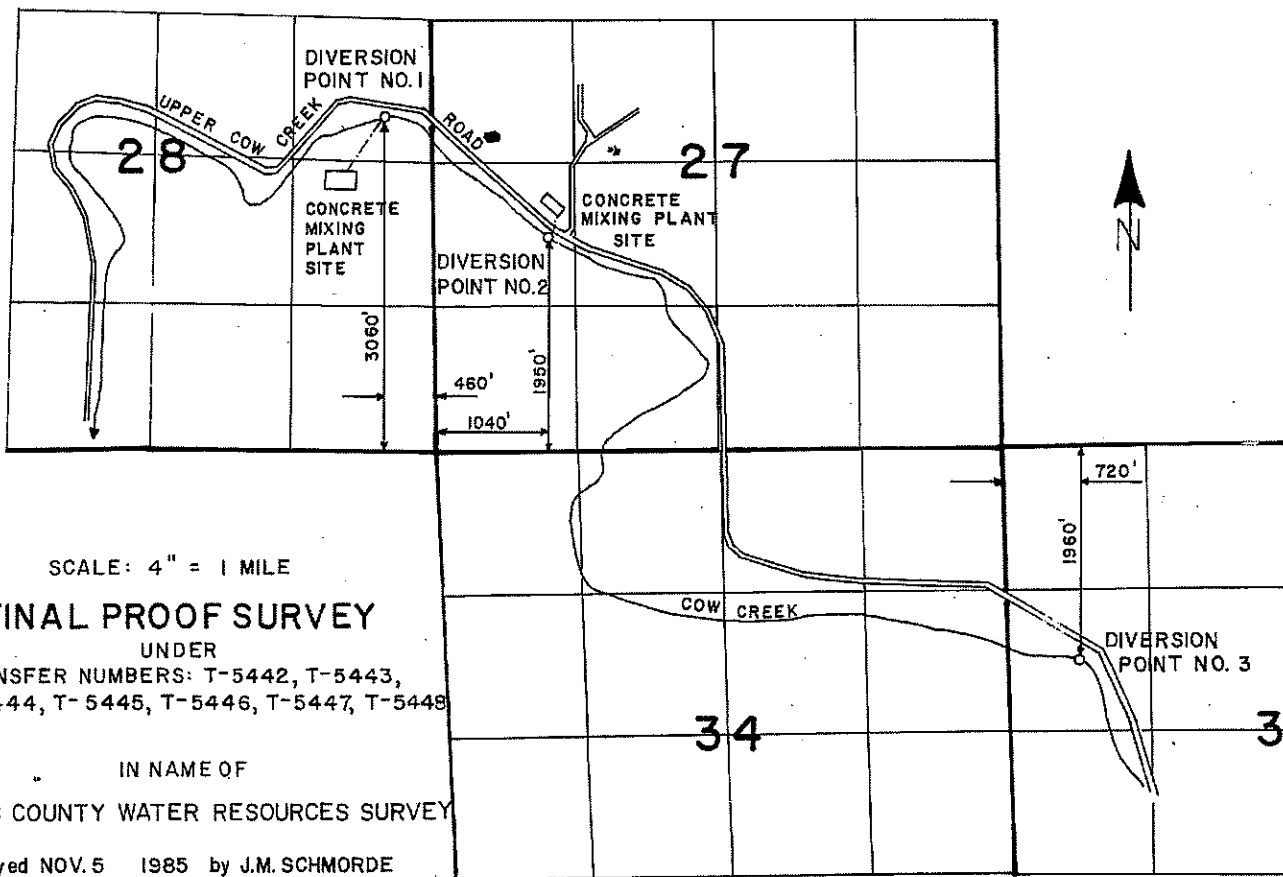


T. 31 S., R. 4 W., W. M.



SCALE: 4" = 1 MILE

**FINAL PROOF SURVEY**

UNDER

TRANSFER NUMBERS: T-5442, T-5443,  
T-5444, T-5445, T-5446, T-5447, T-5448

IN NAME OF

DOUGLAS COUNTY WATER RESOURCES SURVEY

Surveyed NOV. 5 1985 by J.M. SCHMORDE