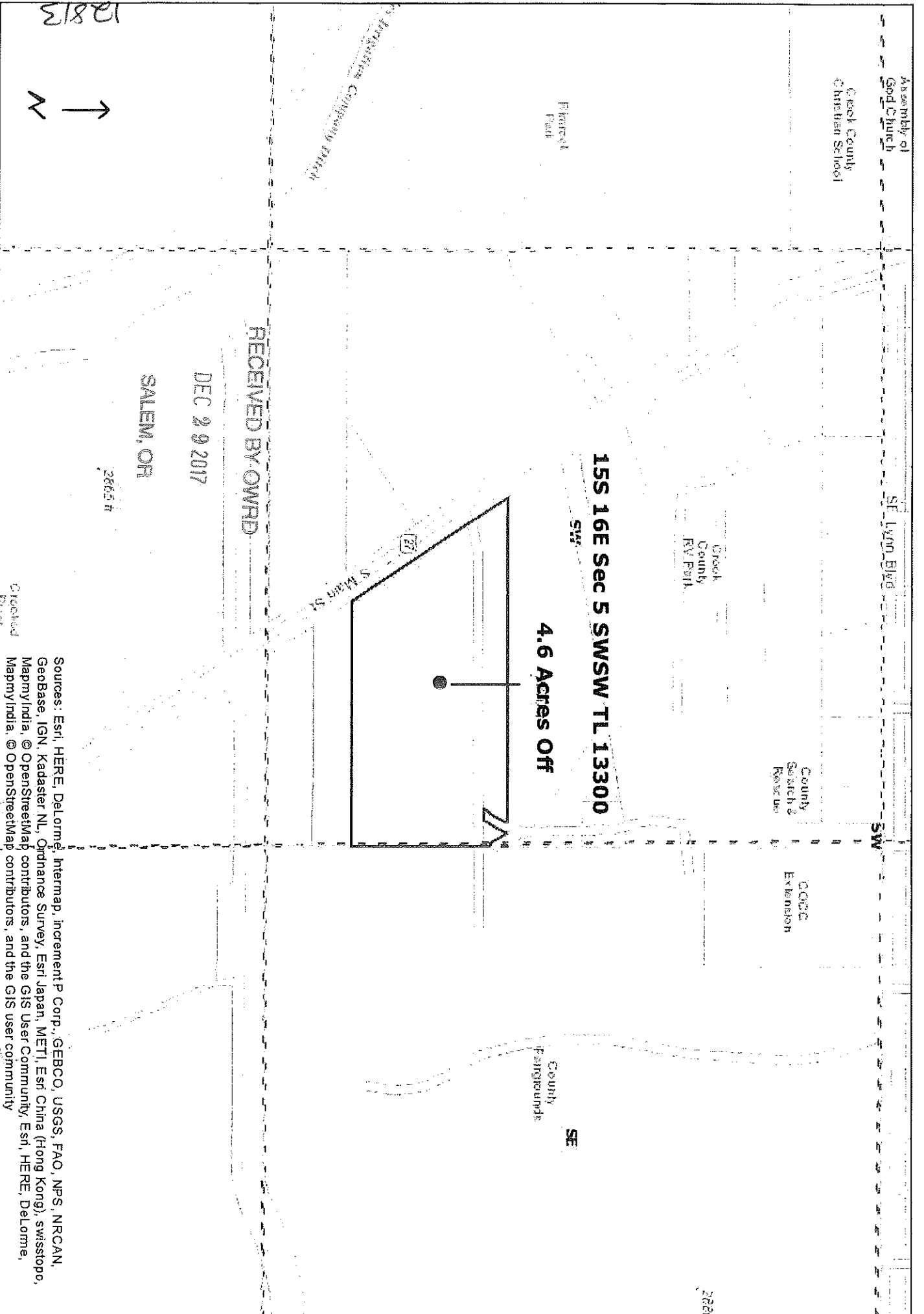


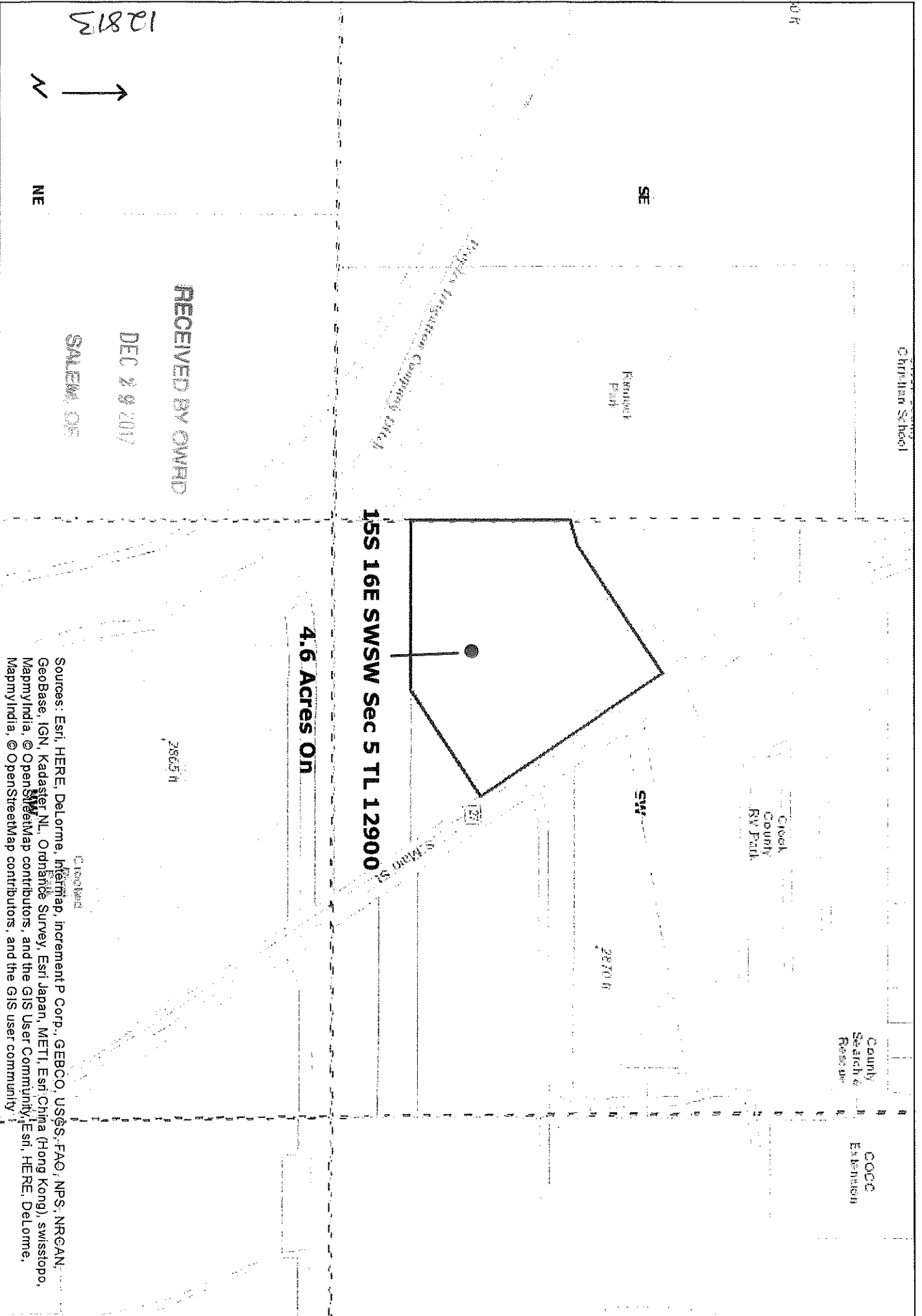
Notice Map 1-17 - Crook County 4.6 Acres Off - CERTIFICATE 82247



Sources: Esri, HERE, DeLorme, Intermap, increment P Corp., GEBCO, USGS, FAO, NPS, NRCAN, Geobase, IGN, Kadaster NL, Ordnance Survey, Esri Japan, METI, Esri China (Hong Kong), swisstopo, MapmyIndia, © OpenStreetMap contributors, and the GIS User Community, Esri, HERE, DeLorme, MapmyIndia, © OpenStreetMap contributors, and the GIS user community



Notice Map 1-17 - Crook County 4.6 Acres On - CERTIFICATE 82247



Christman School

County Search & Extension

Crook County RV Park

Kinnick Park

Hanna Irrigation Company Ditch

15S 16E SWSW Sec 5 TL 12900

4.6 Acres On

2865 ft

2870 ft

12813

N
NE

RECEIVED BY OWNER

DEC 29 2017

SALEM, OR



Sources: Esri, HERE, DeLorme, Intermap, increment P Corp., GEBCO, USGS, FAO, NPS, NRCAN, Geobase, IGN, Kadaster NL, Ordnance Survey, Esri Japan, METI, Esri China (Hong Kong), Swisstopo, MapmyIndia, © OpenStreetMap contributors, and the GIS User Community, Esri, HERE, DeLorme, MapmyIndia, © OpenStreetMap contributors, and the GIS user community

Williams Ranch Properties LLC

DEE MAP C. 82247

10.3 ac

After Boundary Line adjustment & Transfer Off
30.9 + 0.1 = 31 - 1.0 = 30 acres
14S15E26NENW TL400

30.9-ac

0.1 acres Remaining

14S15E26NENW TL400

1.0 acres

14S15E26NENW TL500

5.4 acres

14S15E26SENW TL500 0.6 acres

14S15E26SENW TL500

3.0 acres

14S15E26SENW TL500

12.4 acres

2.3 ac

After Boundary Line adjustment & Transfer Off
2.3 + 1.0 = 3.3

9 ac

1.0 acres Remaining
14S15E26SENW TL400

7.9-ac

23.4 ac

Received by OWRD

APR 23 2018

Salern, OR



Crook County is not responsible for errors, omissions, or misuse. Map is for reference purposes only. Notify Crook County GIS of errors (541) 416-9390.

1 inch = 376 feet

12813



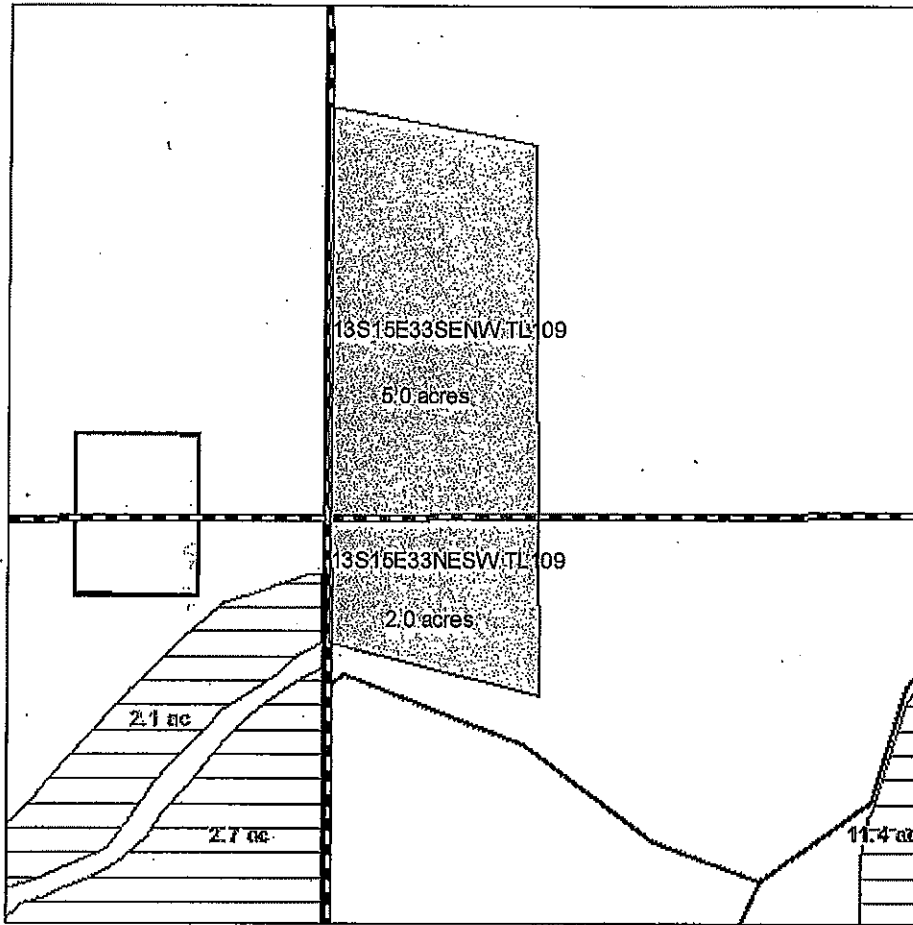
Crook County

T 13S R 15E Sec. 33 Tax Lot 109

SE & NE Of The NW & SW



ON Map



Certificate 82247

- | | | |
|----------|---------------|--------------------------|
| Transfer | Cert 82246 IR | Cert 82246 IR / 82247 IS |
| Tax Lot | Cert 82247 IR | Cert 82249 IS |



Application for Permanent Transfer

John Dehler

Acres: 7.0

Received by OWRD

APR 28 2018

12813

Salem, OR

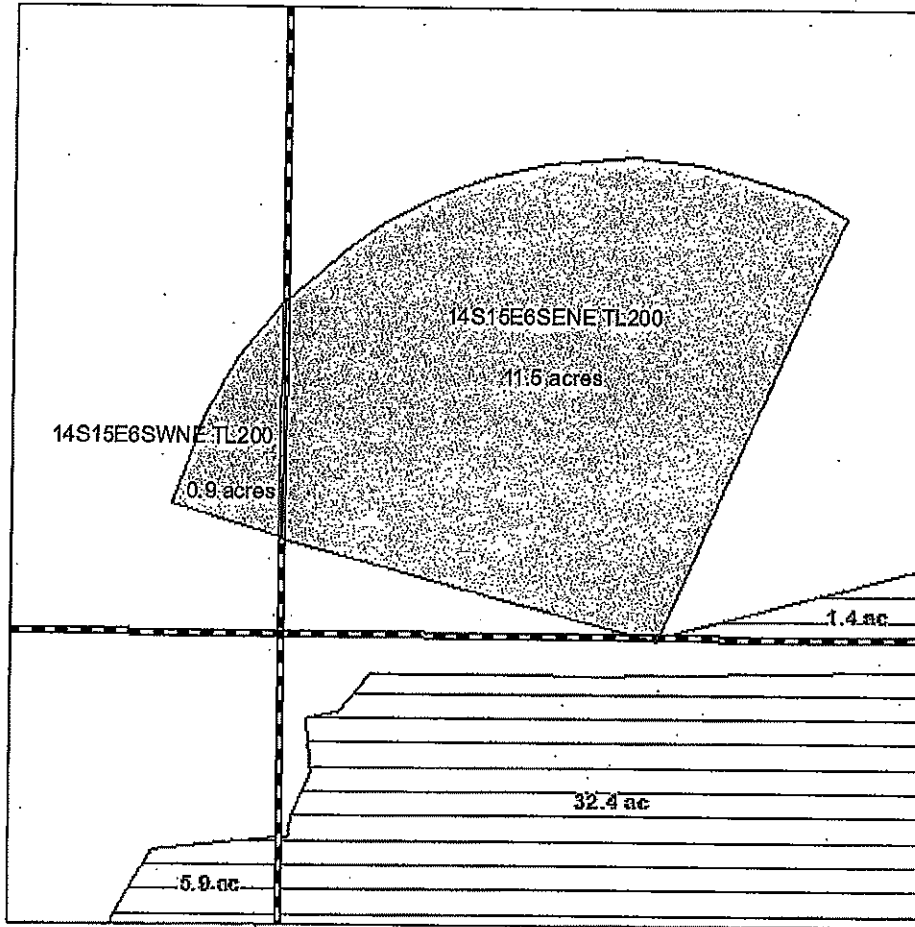
Crook County

T 14S R 15E Sec. 6 Tax Lot 200

SW & SE Of The NE



ON Map



1 in = 400 ft

Certificate 82247

- | | | |
|----------|---------------|--------------------------|
| Transfer | Cert 82246 IR | Cert 82246 IR / 82247 IS |
| Tax Lot | Cert 82247 IR | Cert 82249 IS |



Application for Permanent Transfer

William Guthrie

Received by OWRD

Acres: 12.4

APR 23 2018

12813

Salem, OR

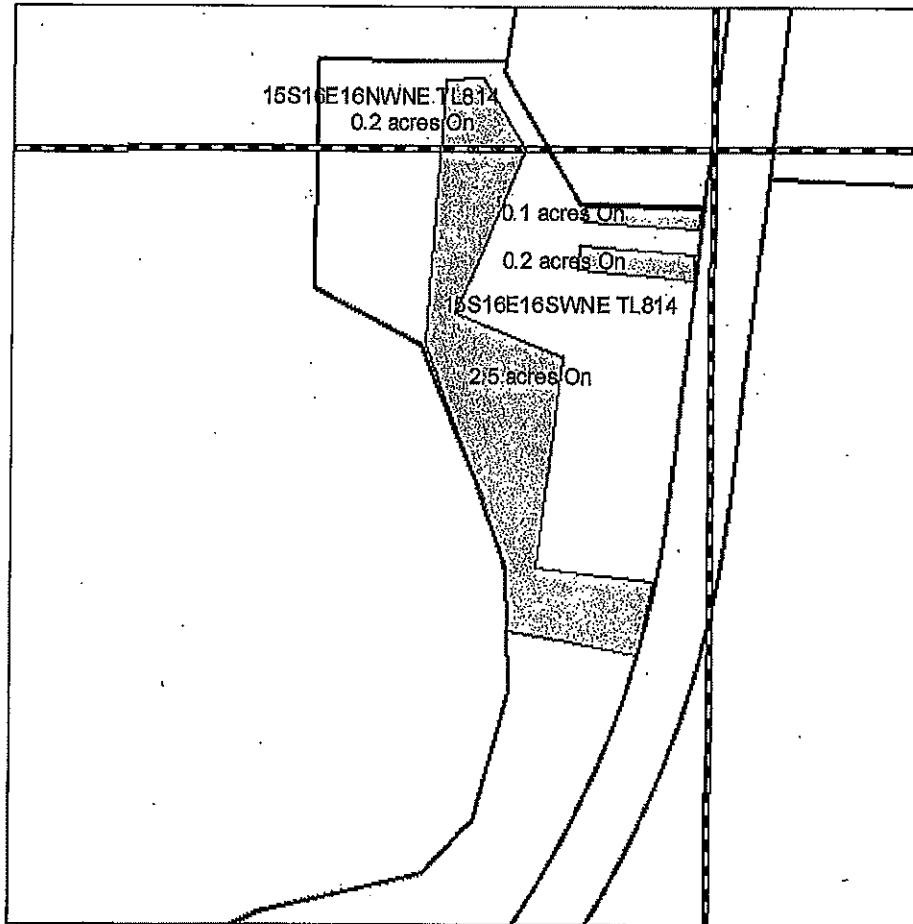
Crook County

T 14s R 16E Sec. 16 Tax Lot 814

SW & NW Of The NE



ON Map



1 in = 400 ft

Certificate 82247

- | | | |
|----------|---------------|--------------------------|
| Transfer | Cert 82246 IR | Cert 82246 IR / 82247 IS |
| Tax Lot | Cert 82247 IR | Cert 82249 IS |

12813



Application for Permanent Transfer

Jared Wilkinson

Acres: 3.0

Received by OWRD

APR 23 2018

Salem, OR