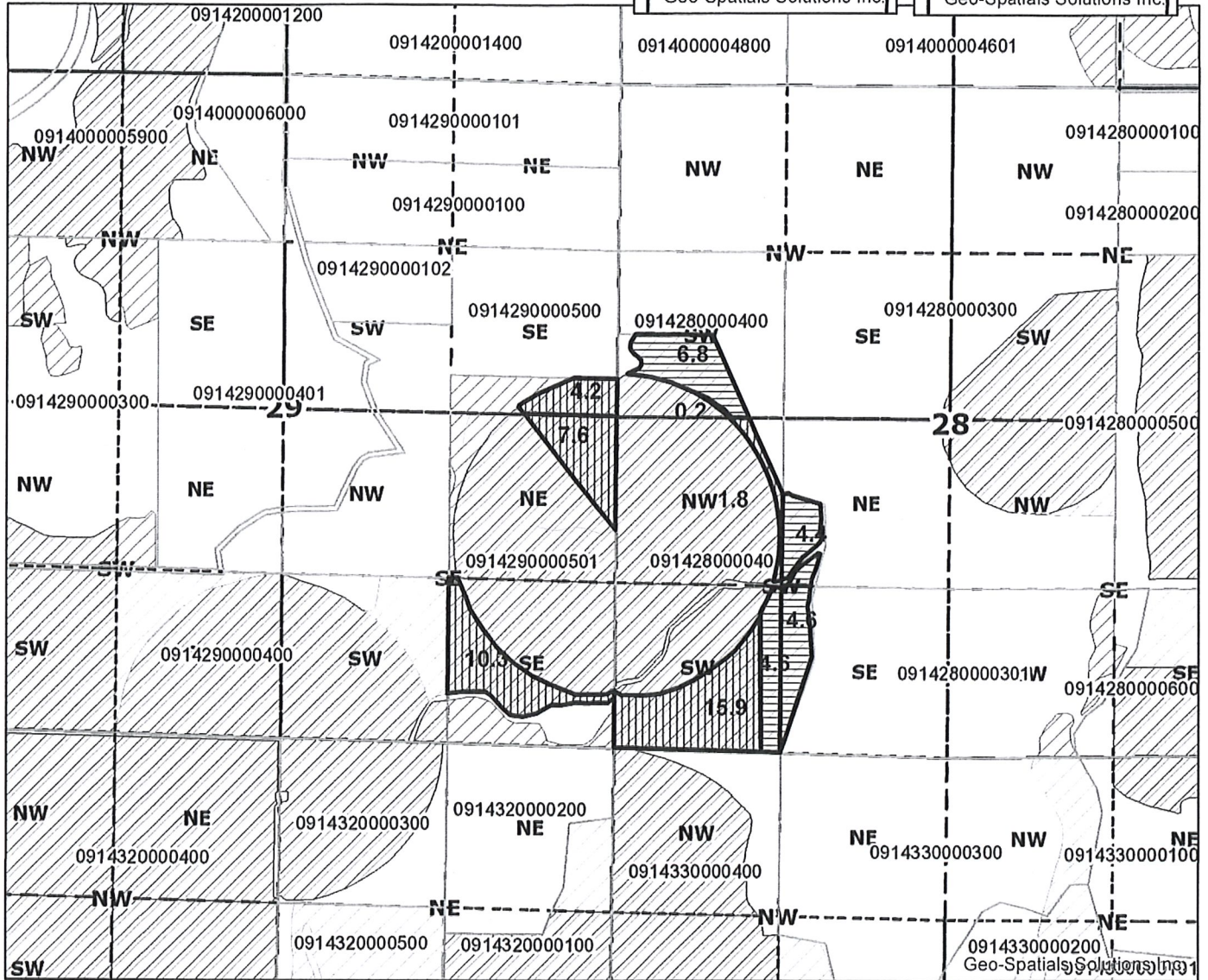
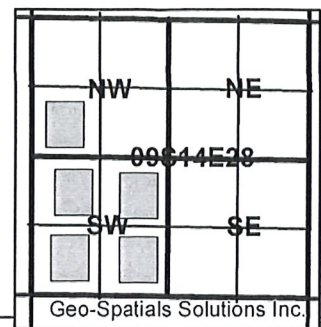


2017 Regular Transfer 'OFF' Rawhide
Excavating Inc.

North Unit Irrigation District
2024 NW Beech Street
Madras, OR 97741
Phone: (541) 475-3625
Fax: (541) 475-3905
email: pwatson@northunitid.com





- 0914290000501 SENE 4.2 acres 72279 & 72281 'OFF' 0.1 Remaining
- 0914290000501 NESE 7.8 acres 72279 & 72281 'OFF' 27.0 Remaining
- 0914290000501 SESE 10.3 acres 72279 & 72281 'OFF' 19.3 Remaining
- 0914280000401 SWNW 0.2 acres 72279 & 72281 'OFF' 4.4 Remaining
- 0914280000401 SWNW 6.8 acres 90177 'OFF' -0- Remaining
- 0914280000401 NESW 4.4 acres 90177 'OFF' -0- Remaining
- 0914280000401 NWSW 1.8 acres 72279 & 72281 'OFF' 36.5 Remaining
- 0914280000401 SWSW 15.9 acres 72279 & 72281 'OFF' 17.1 Remaining
- 0914280000401 SWSW 4.6 acres 90177 'OFF' -0- Remaining
- 0914280000401 SESW 4.6 acres 90177 'OFF' -0- Remaining

RECEIVED

JAN 02 2018

OWRD

Total to Transfer 60.4 acres OFF

 0914290000501 22.1 DE off 72279 & 72281
 0914280000401 17.9 DE off 72279 & 72281

 0914280000401 20.4 CR off 90177



1 in = 1,320 ft

T 12818

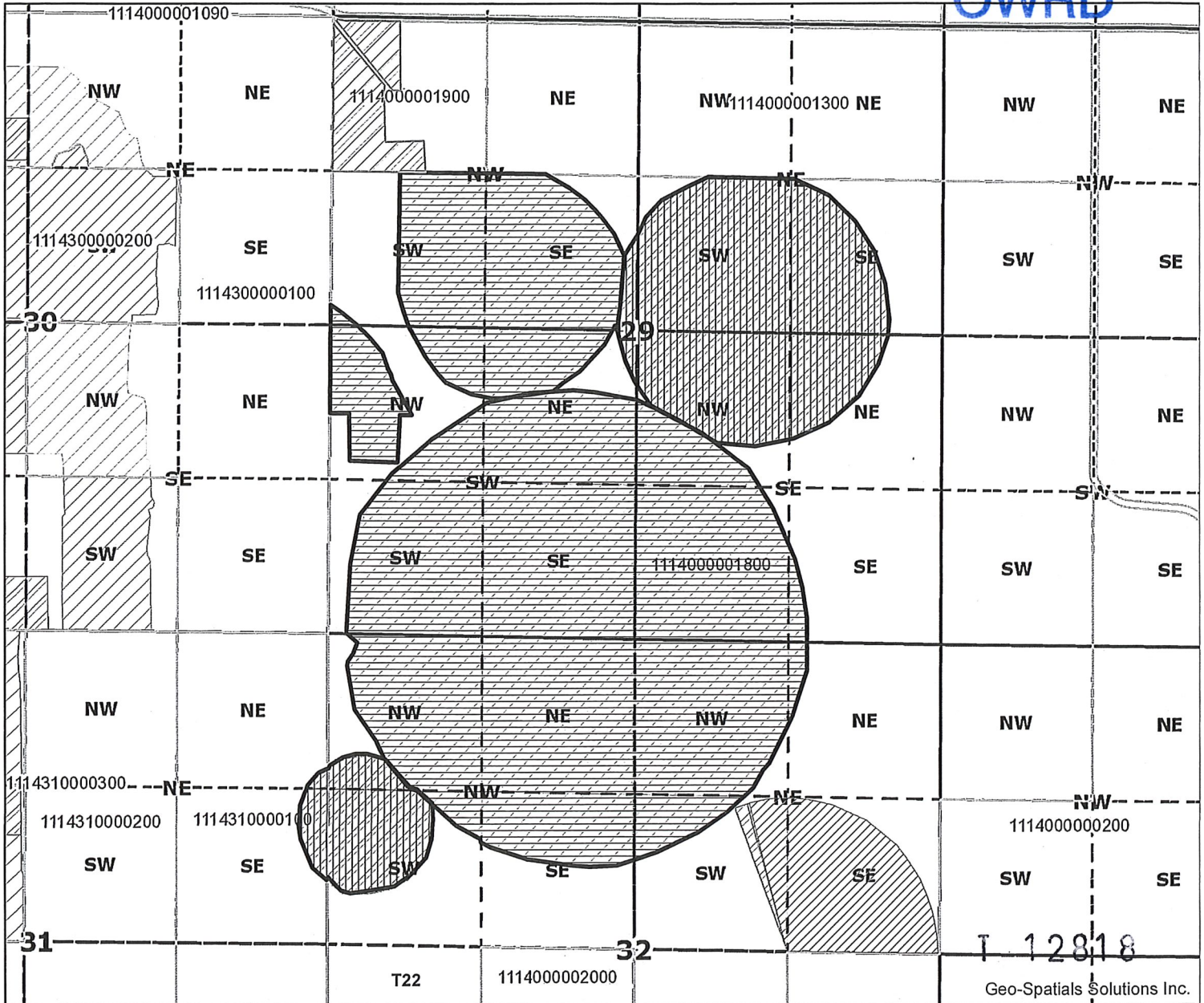
2017 Regular Transfer 'OFF' Norton Land Co LLC

North Unit Irrigation District
 2024 NW Beech Street
 Madras, OR 97741
 Phone: (541) 475-3625
 Fax: (541) 475-3905
 email: pwatson@northunitid.com

RECEIVED

JAN 02 2018

OWRD



- 1114(29)0001800 SWNW 22.3 acres 90177 'OFF'
- 1114(29)0001800 SENW 32.3 acres 90177 'OFF'
- 1114(29)0001800 SENW 1.9 acres 72279 & 72281 'OFF'
- 1114(29)0001800 NESW 35.2 acres 90177 'OFF'
- 1114(29)0001800 NESW 0.6 acres 72279 & 72281 'OFF'
- 1114(29)0001800 NWSW 24.2 acres 90177 'OFF'
- 1114(29)0001800 SWSW 32.4 acres 90177 'OFF'
- 1114(29)0001800 SESW 40.0 acres 90177 'OFF'
- 1114(29)0001800 SWNE 37.4 acres 72279 & 72281 'OFF'
- 1114(29)0001800 SENE 19.2 acres 72279 & 72281 'OFF'
- 1114(29)0001800 NESE 11.8 acres 72279 & 72281 'OFF'
- 1114(29)0001800 NWSE 25.1 acres 72279 & 72281 'OFF'
- 1114(29)0001800 NWSE 11.2 acres 90177 'OFF'
- 1114(29)0001800 SWSE 38.8 acres 90177 'OFF'
- 1114(29)0001800 SESE 2.2 acres 90177 'OFF'

- 1114310000100 NENE 0.5 acres 72279 & 72281 'OFF'
- 1114310000100 SENE 3.0 acres 72279 & 72281 'OFF'
- 1114(32)0001800 NENW 40.0 acres 90177 'OFF'
- 1114(32)0001800 NWNW 30.0 acres 90177 'OFF'
- 1114(32)0001800 NWNW 3.6 acres 72279 & 72281 'OFF'
- 1114(32)0001800 SWNW 2.9 acres 90177 'OFF'
- 1114(32)0001800 SWNW 16.3 acres 72279 & 72281 'OFF'
- 1114(32)0001800 SENW 16.7 acres 90177 'OFF'
- 1114(32)0001800 NENE 1.8 acres 90177 'OFF'
- 1114(32)0001800 NWNE 38.6 acres 90177 'OFF'
- 1114(32)0001800 SWNE 6.9 acres 90177 'OFF'



Transfer 'OFF' 119.4 acres DE 72279 & 72281
 Transfer 'OFF' 375.5 acres CR 90177

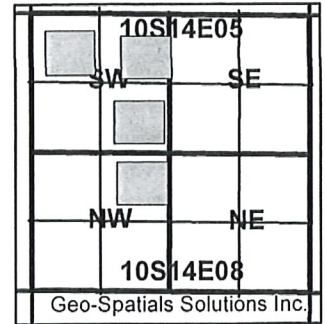


1 in = 1,320 ft

Geo-Spatial Solutions Inc.

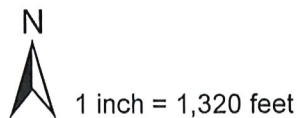
2017 Regular Transfer 'OFF' Williams & Williams LLC to Norton Land Co

North Unit Irrigation District
 2024 NW Beech Street
 Madras, OR 97741
 Phone: (541) 475-3625
 Fax: (541) 475-3905
 email: pwatson@northunitid.com



101405000900 NESW 22.9 acres 72279 & 72281 'OFF' 12.6 Remaining
 101405000900 NWSW 35.6 acres 72279 & 72281 'OFF' -0- Remaining
 1014050001200 SESW 9.5 acres 72279 & 72281 'OFF' 30.0 Remaining
 1014080001100 NENW 9.4 acres 72279 & 72281 'OFF' 30.0 Remaining

RECEIVED
 JAN 02 2018
OWRD



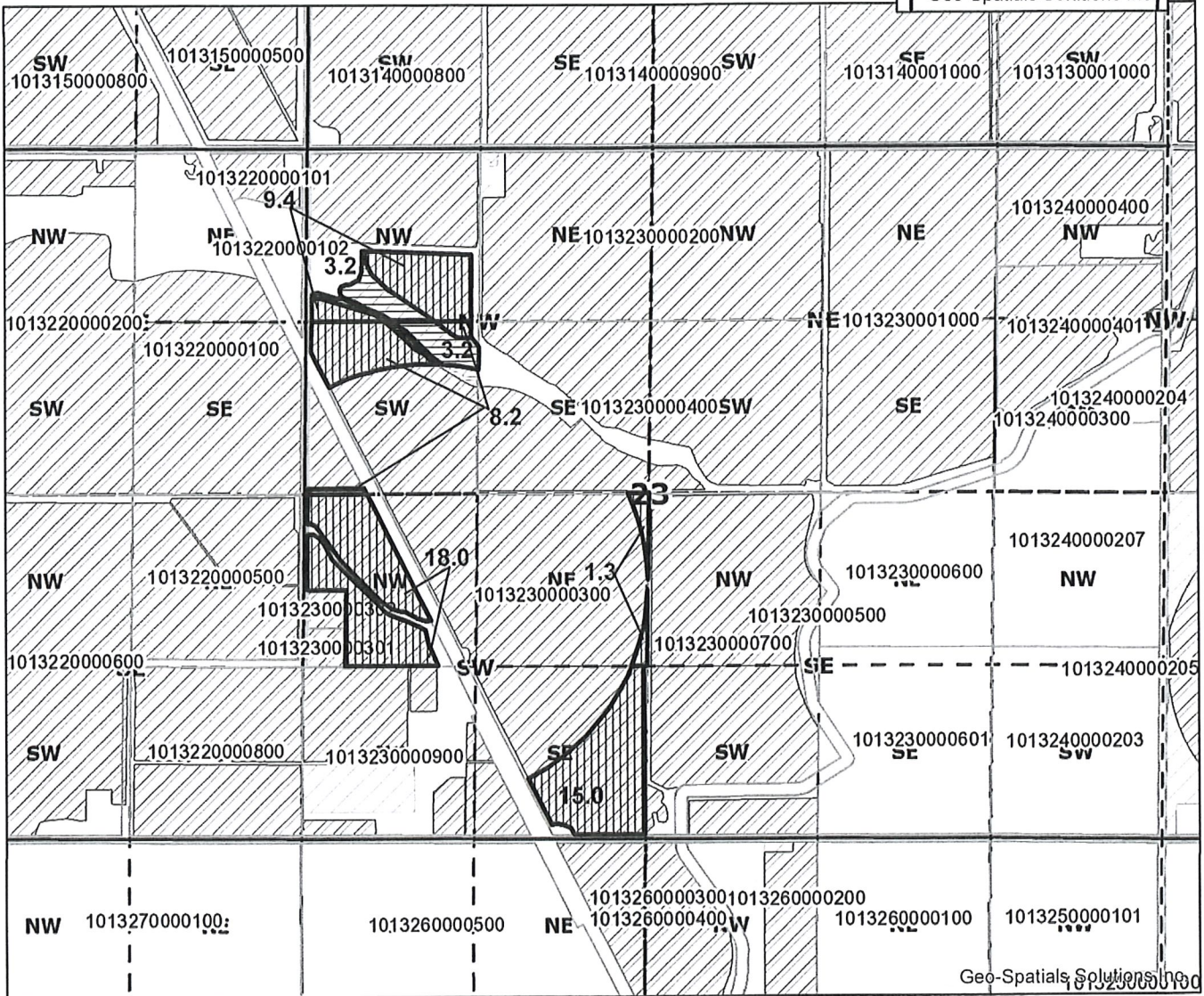
T 12818



Total To Transfer 77.4 Deschutes acres OFF
 101405000900 58.5 DE off 72279 & 72281
 1014050001200 9.5 DE off 72279 & 72281
 1014080001100 9.4 DE off 72279 & 72281

2017 Regular Transfer 'OFF' Williams & Williams LLC to Norton Land Co

North Unit Irrigation District
 2024 NW Beech Street
 Madras, OR 97741
 Phone: (541) 475-3625
 Fax: (541) 475-3905
 email: pwatson@northunitid.com



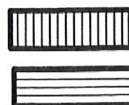
- 1013230000300 NWNW 9.4 acres 72279 & 72281 'OFF' 20.3 Remaining
- 1013230000300 NWNW 3.2 acres 90177 'OFF' -0- Remaining
- 1013230000300 SWNW 8.2 acres 72279 & 72281 'OFF' 24.4 Remaining
- 1013230000300 SWNW 3.2 acres 90177 'OFF' 0.4 Remaining
- 1013230000300 NWSW 18.0 acres 72279 & 72281 11.1 Remaining
- 1013230000300 NESW 1.3 acres 72279 & 72281 38.7 Remaining
- 1013230000300 SESW 15.0 acres 72279 & 72281 14.2 Remaining

RECEIVED

JAN 02 2018

OWRD

Total to Transfer 58.3 acres OFF
 1013230000300 51.9 DE off 72279 & 72281



1013230000300 6.4 CR off 90177

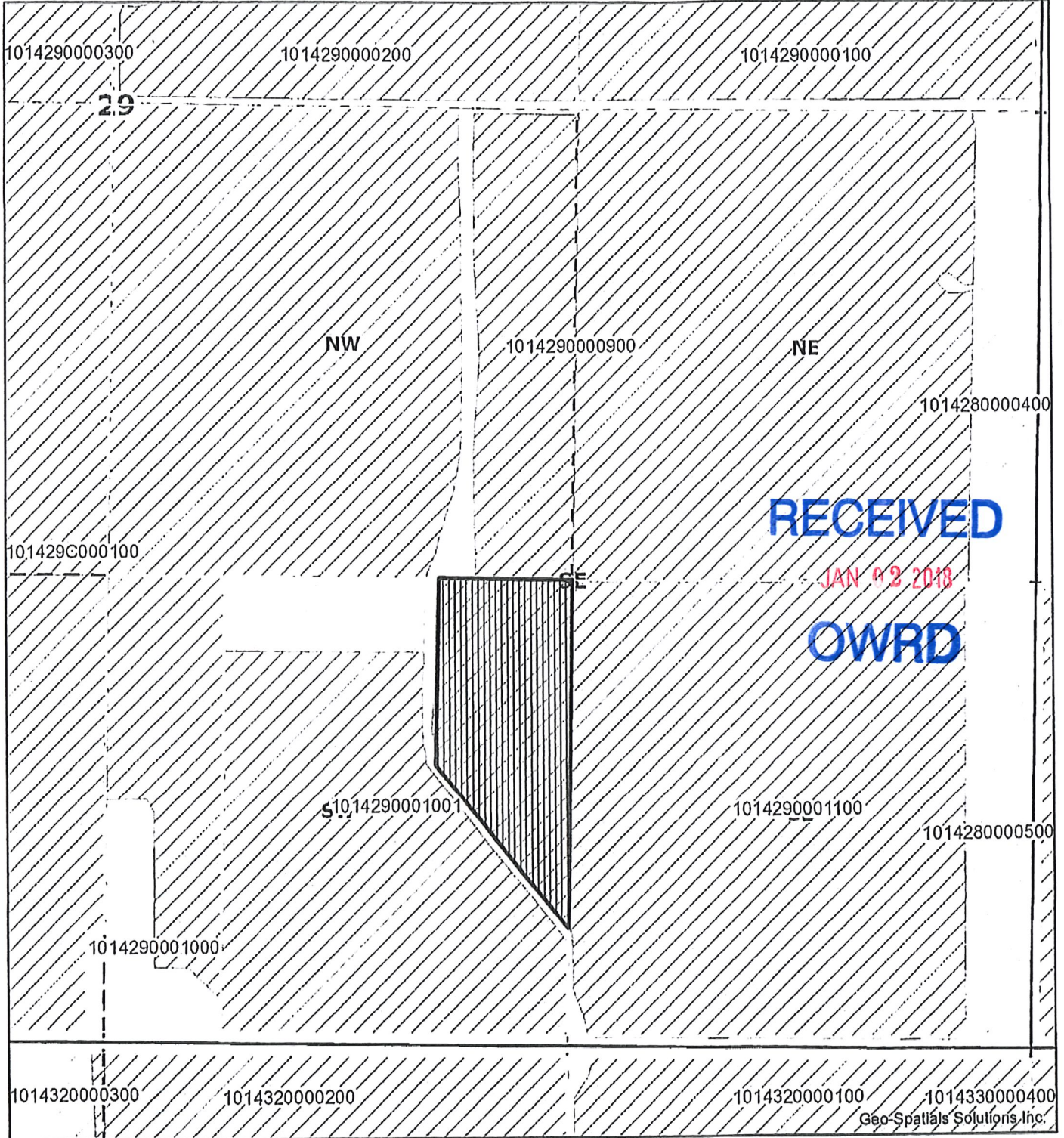
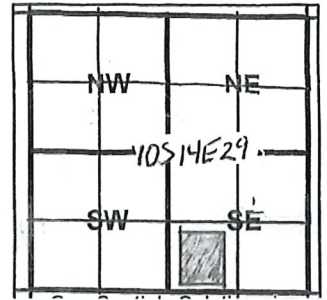


1 inch = 1,320 feet

T 12818

2017 Regular Transfer 'OFF' LIS Investments LLC

North Unit Irrigation District
2024 NW Beech Street
Madras Oregon 97741
Phone: (541) 475-3625
Fax: (541) 475-3905
email: pwatson@northunitid.com



1014290001001 SWSE 6.7 acres 72279 & 72281 'OFF' 19.1 Remain



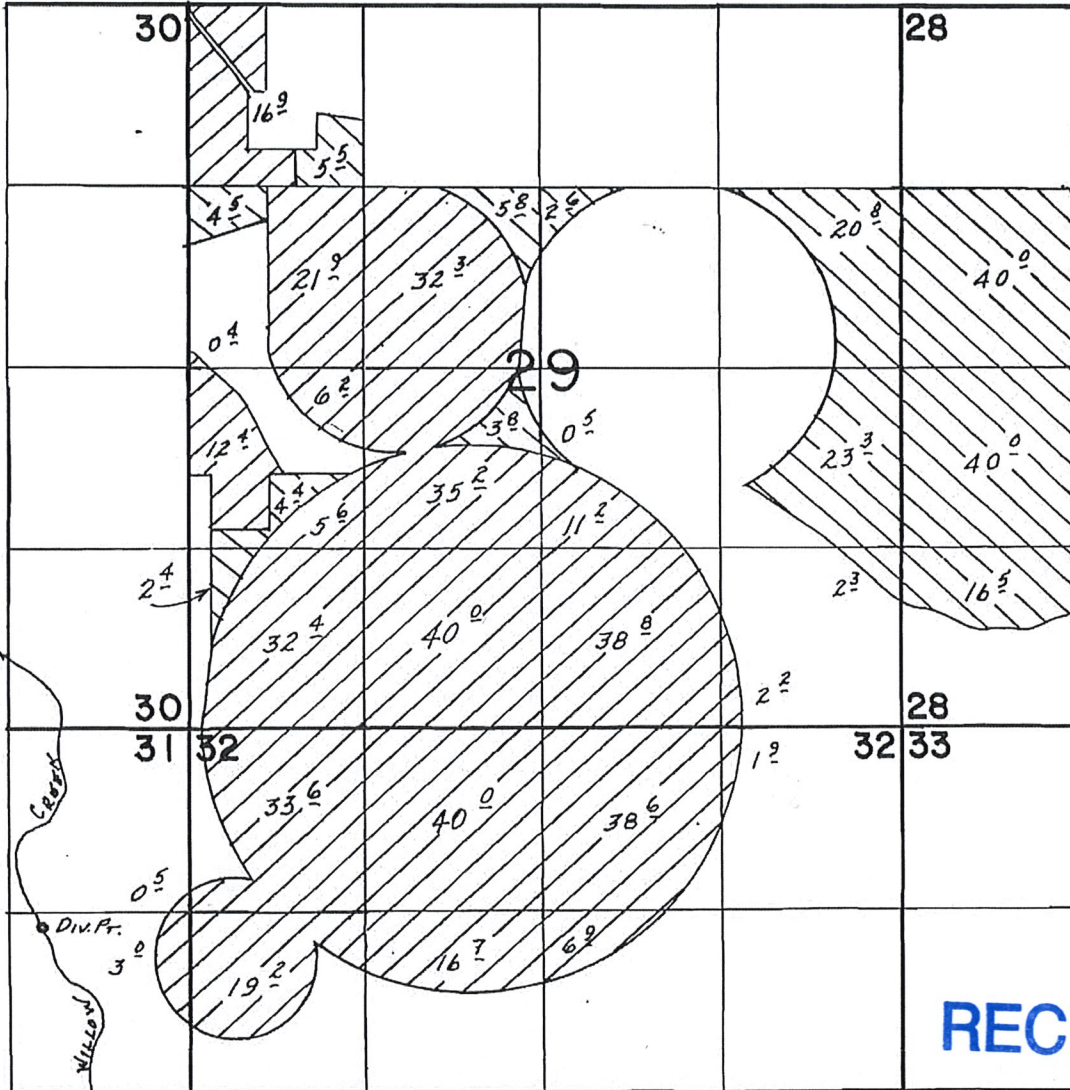
Transfer 'OFF'



1 in = 400 ft

T 12818

T. 11 S., R. 14 E., W.M.

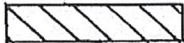


RECEIVED

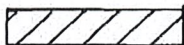
DIV. PT. LOC.: 1440'S. & 1080'W. FROM NE COR. SEC. 31

JAN 02 2018

SCALE: 1" = 1320'



PRIMARY



SUPPLEMENTAL

OWRD

FINAL PROOF SURVEY

UNDER

Application No. 60045 Permit No. 45102..... C 75751
IN NAME OF

...SANDNERS RANCH PARTNERS...

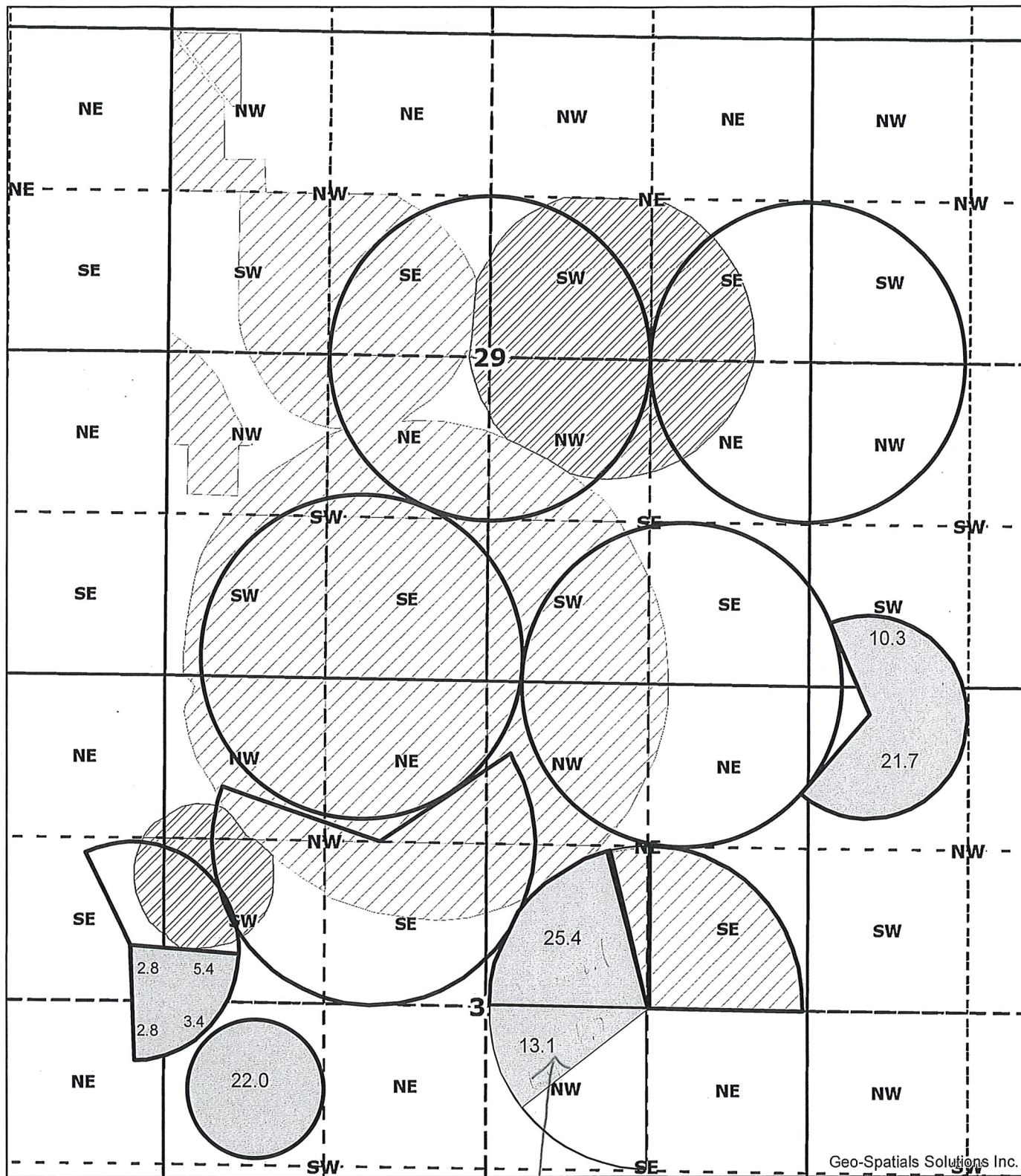
Surveyed APR 5, 1988, by R.W. BISHOP...
APR 19 1994 R.M. SUTTERFIELD

Pgs 11-1988
11031-379-136A

3-8-96
BWS

T 12818

45102



Geo-Spatial Solutions Inc.

RECEIVED
 RECEIVED
 2018
 JAN 02 2018
 OWRD

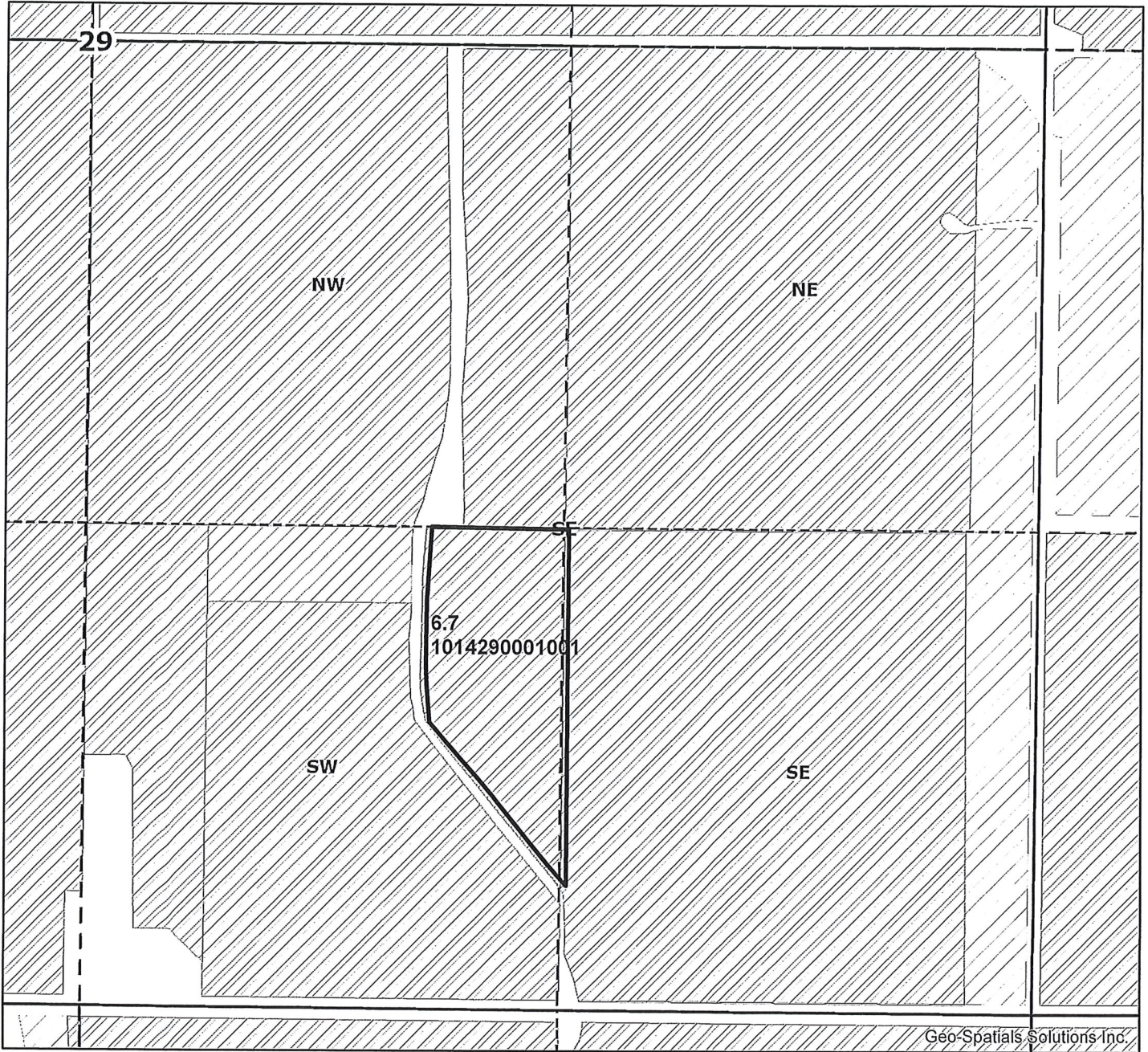
Temporary Transfer 'ON' 106.9 Deschutes 72279 & 72281
 1114(28)0001800 10.3
 1114(33)0001800 21.7
 1114(32)0001800 69.3
 1114(31)0001800 05.6

2016-6-A J Norton 8.4 Deschutes 72279 & 72281
 2016-6-B Williams et al 91.8 Deschutes 72279 & 72281
 2016-6-C G Williams 6.7 Deschutes 72279 & 72281

Portion of 13.1

T 12818

2016-6-B Temporary Trans Green 'OFF'



 Temporary Transfer 'OFF'
6.7 acres Deschutes 72279 & 72281

RECEIVED
JAN 02 2018
OWRD

North Unit Irrigation District
2024 NW Beech Street
Madras, OR 97741
Phone: (541) 475-3625
Fax: (541) 475-3905
email: pwatson@northunitid.com



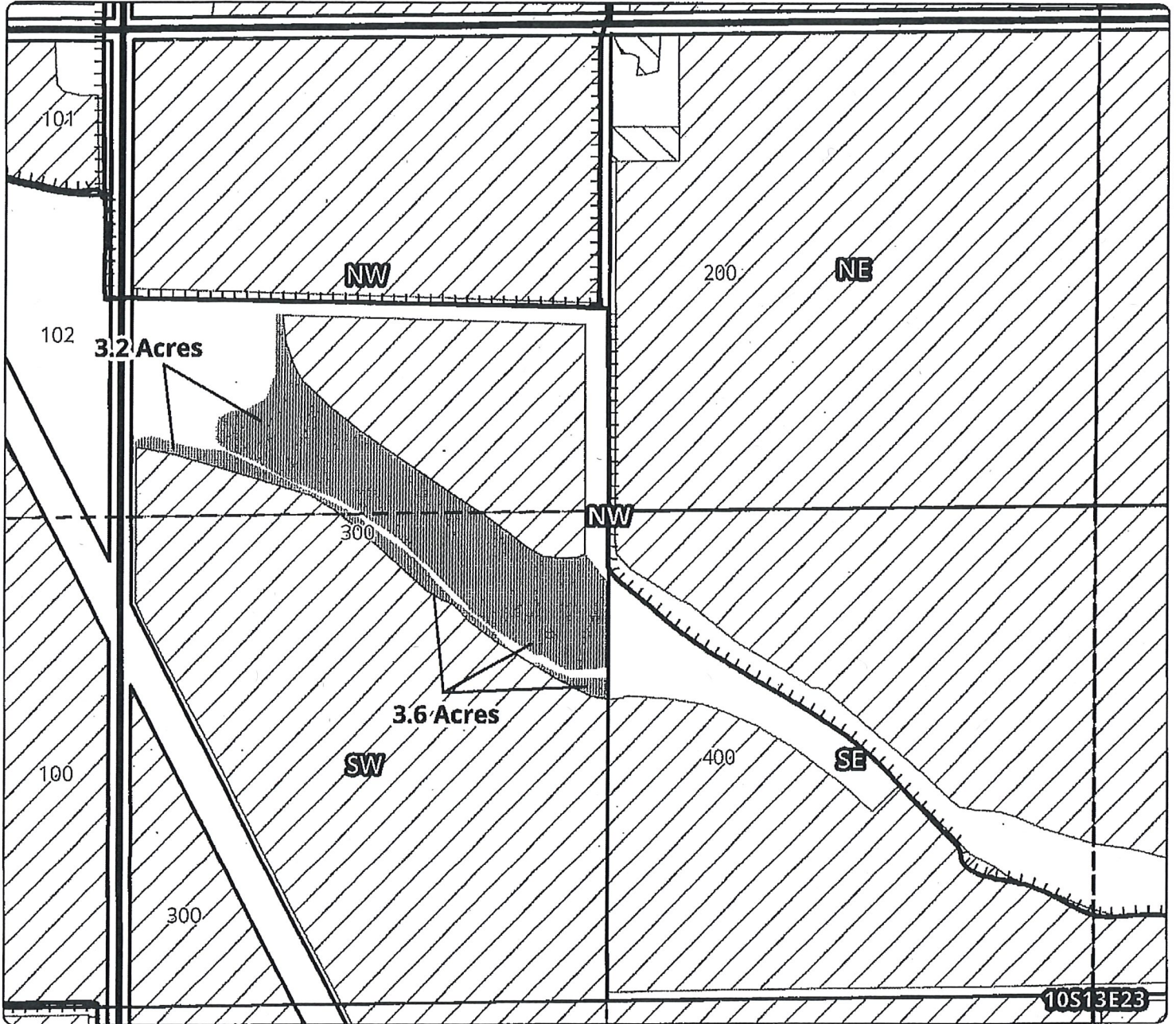
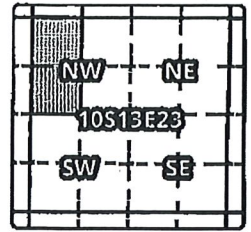
T 12818

North Unit Irrigation District Claim of Beneficial Use - T11178

Cert #: 72283

Landowner: Gregory T. & Heather C. Williams,
Robert D. & Judith M. Williams

COPY



ON MAP

Taxlot 300, 10S13E23NWNW: 3.2 Acres ON (Cert 72283)
Taxlot 300, 10S13E23SWNW: 3.6 Acres ON (Cert 72283)

- Point of Diversion
- ▬ Canals
- ▭ Taxlots
- ▨ Claim of Beneficial Use
- ▧ Cert 72283
- ▩ Certs 72279 & 72281

