

**LEGEND**

	RANGE LINE		POA (WELL)		IRRIGATED "FROM" ACRES FOR POU & POA
	SECTION LINE		IRRIGATED "FROM" LANDS FOR POU & POA		IRRIGATED "TO" ACRES FOR POU & POA
	1/4 1/4 LINE		IRRIGATED "TO" LANDS FOR POU & POA		IRRIGATED "TO" ACRES FOR POU & POA
	TAX LOT LINE		IRRIGATED "FROM" & "TO" LANDS FOR POA		IRRIGATED "FROM" & "TO" ACRES FOR POA
	☉ CANAL				
	☉ ROAD				
	MAINLINE				
	SECTION CORNER				
	TAX LOT NUMBER				
	PUMP				

**NOTES**

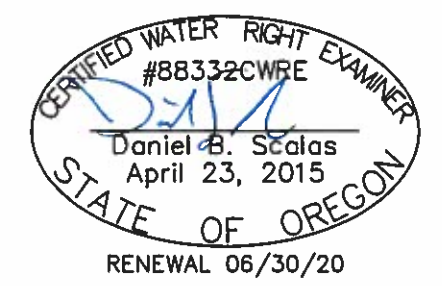
1. THIS MAP WAS PREPARED FROM FIELD MEASUREMENTS, NAIP 2018 AERIAL PHOTOGRAPHY, AND KLAMATH COUNTY TAX MAPS 39 11 & 39 12.
2. THIS MAP IS NOT INTENDED TO PROVIDE LEGAL DIMENSIONS OR LOCATIONS OF PROPERTY OWNERSHIP LINES.
3. DATE OF PRIORITY FOR THIS CERTIFICATE: JUNE 9, 1977.

**WELL TIES**

WELL 1: SE1/4 NE1/4, SECTION 31, T39S, R12E, W.M.; 30' NORTH AND 100' WEST FROM THE EAST 1/4 CORNER OF SECTION 31.

WELL 2: SE1/4 NE1/4, SECTION 31, T39S, R12E, W.M.; 88' NORTH AND 100' WEST FROM THE EAST 1/4 CORNER OF SECTION 31.

RECEIVED  
SEP 07 2018  
OWRD



**ADKINS**  
CONSULTING ENGINEERING, LLP  
Engineers ▲ Planners ▲ Surveyors  
1435 Esplanade Ave · Klamath Falls, Oregon 97601 · (541) 884-4666 · FAX (541) 884-5335  
Oregon · California  
6/13/2018 3533-01

**PERMANENT WATER RIGHT TRANSFER**  
FOR  
MOSS RANCH LLC  
T39S, R11E, SEC. 25, 26, 35, & 36, W.M.  
T39S, R12E, SEC. 31, W.M.  
KLAMATH COUNTY, OREGON  
CERTIFICATE 65412