

T-10653

# PLACE OF USE MAP IN SECTION 6, T.15S., R.16E., W.M., CITY OF PRINEVILLE, CROOK COUNTY, OREGON W.O. 10-3980

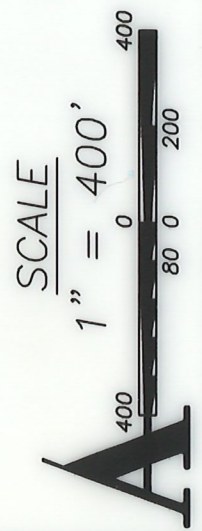
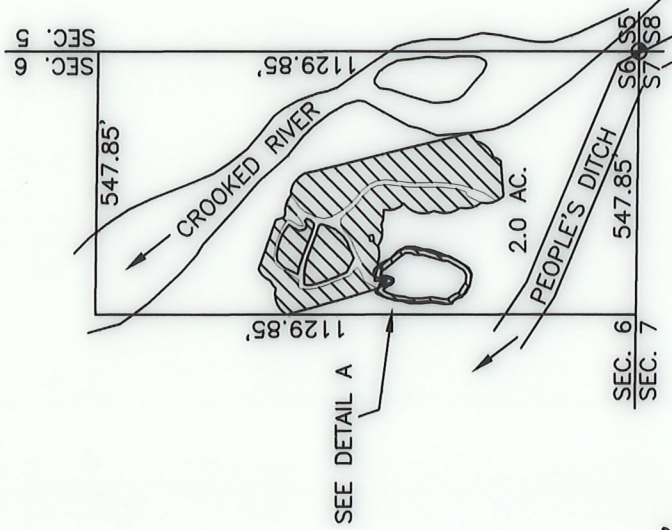
**PREPARED FOR**  
CROOK COUNTY PARKS AND RECREATION DISTRICT  
398 NE FAIRVIEW ST.  
PRINEVILLE, OR 97754  
(541) 447-1209

**PREPARED BY**  
ARMSTRONG SURVEYING & ENGINEERING, INC.  
267 NE SECOND ST., STE. 100  
PRINEVILLE, OR 97754  
(541) 447-7791

### LEGEND

- SECTION CORNER
- ▨ IRRIGATED LANDS

TAX LOT 400  
TAX MAP 15-16-6



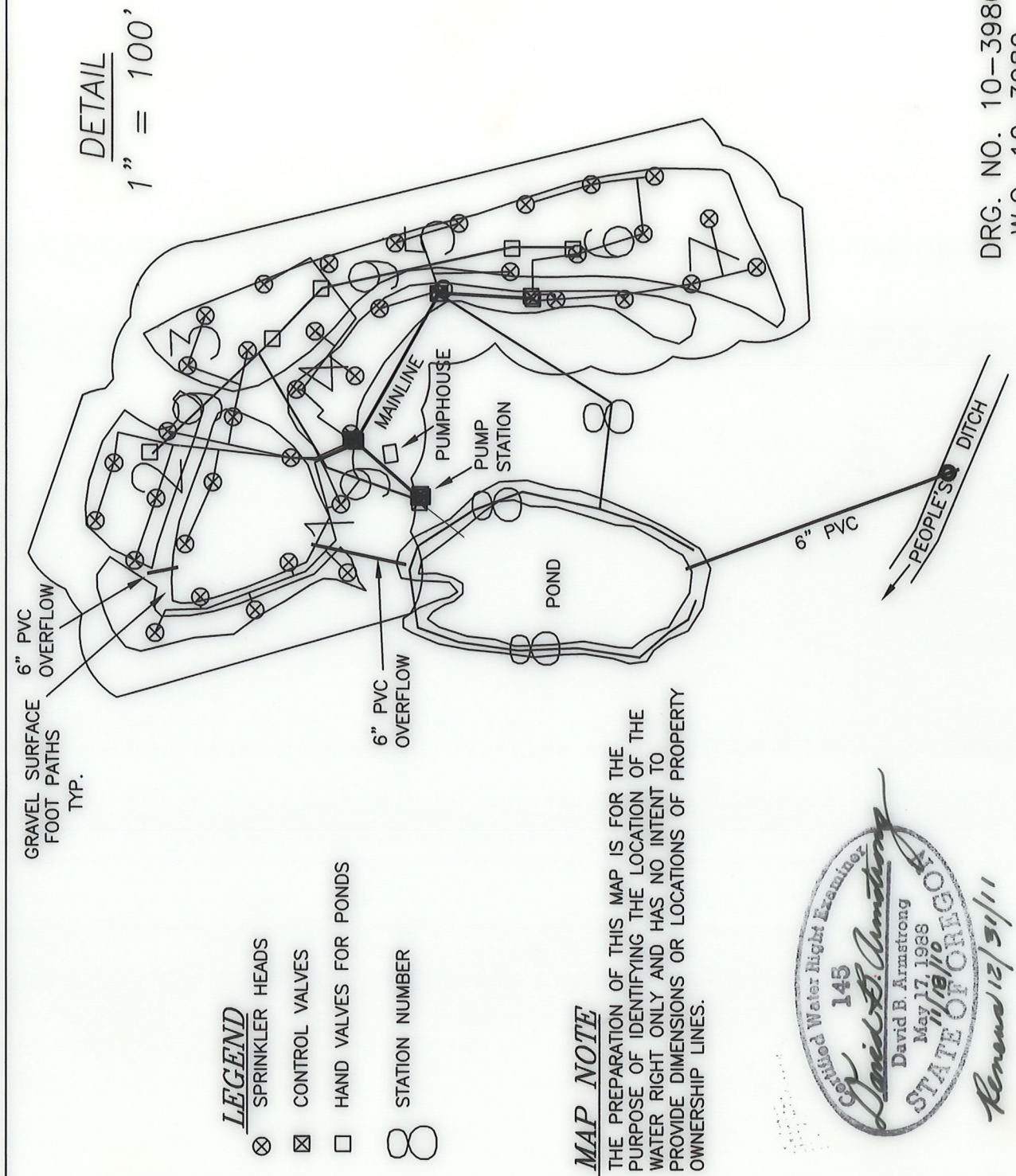
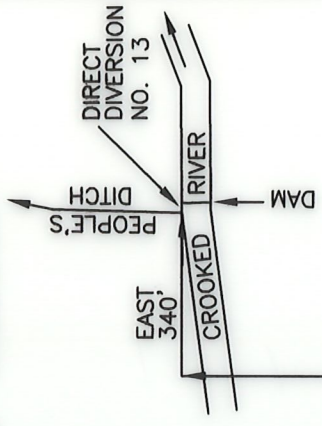
NOVEMBER 18, 2010

RECEIVED  
NOV 2 2 2010  
WATER RESOURCES DEPT  
SALEM, OREGON

2-1/2" ALUM. CAP  
S7 S8  
S18 S17

NW 1/4 SW1/4  
SEC. 8, T.15S., R.16E., W.M.  
NW 1/4 SW1/4  
SW 1/4 SW1/4

NORTH - 1920'



### LEGEND

- ⊗ SPRINKLER HEADS
- ⊠ CONTROL VALVES
- HAND VALVES FOR PONDS
- 8 STATION NUMBER

### MAP NOTE

THE PREPARATION OF THIS MAP IS FOR THE PURPOSE OF IDENTIFYING THE LOCATION OF THE WATER RIGHT ONLY AND HAS NO INTENT TO PROVIDE DIMENSIONS OR LOCATIONS OF PROPERTY OWNERSHIP LINES.

145  
Certified Water Right Examiner  
*David B. Armstrong*  
David B. Armstrong  
May 17, 1988  
STATE OF OREGON  
Renew 12/31/11

DRG. NO. 10-3980  
W.O. 10-3980