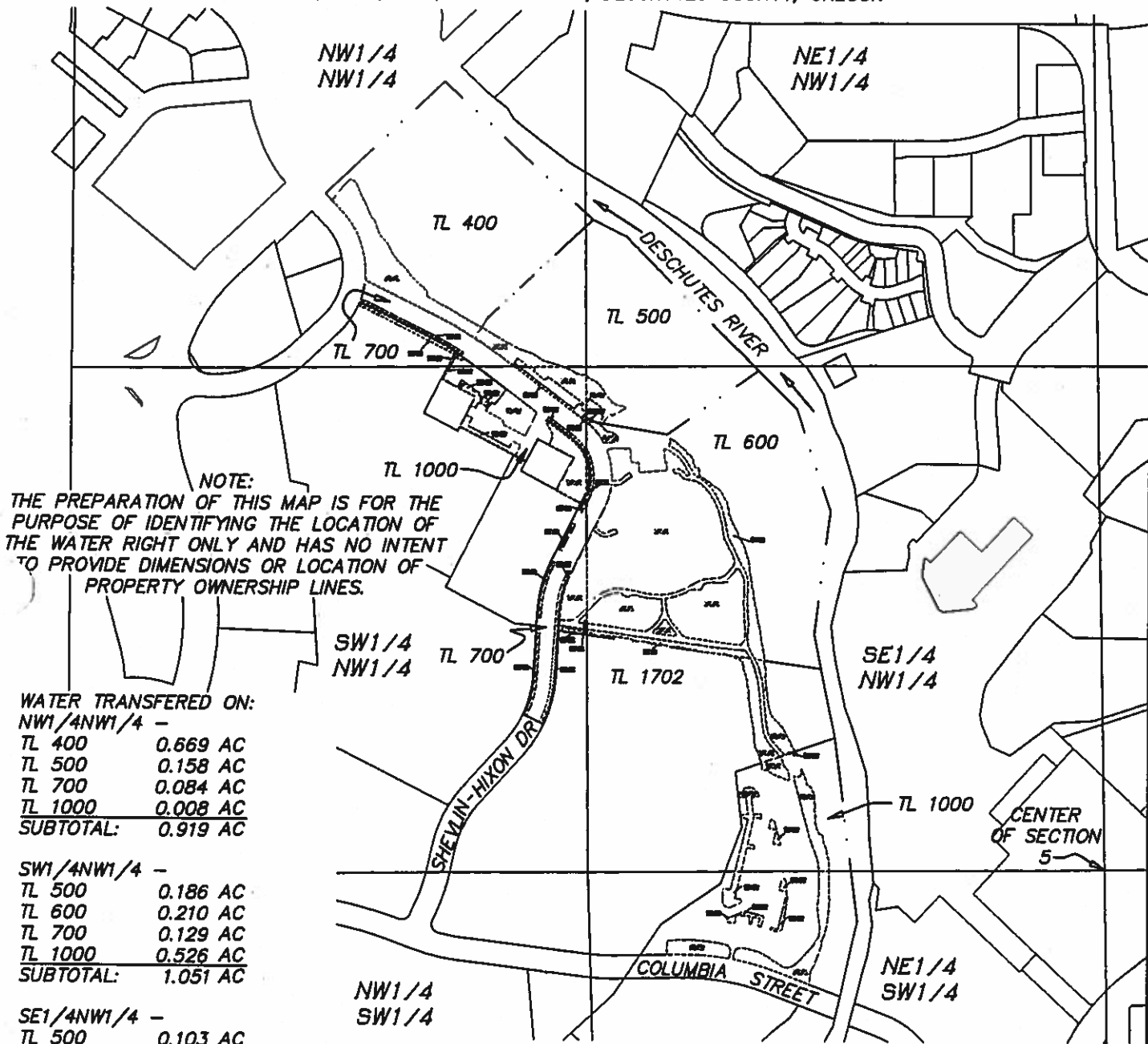


EXHIBIT B

WATER RIGHTS TRANSFER MAP - ON CENTRAL OREGON IRRIGATION DISTRICT

LOCATED IN: NW1/4NW1/4, SW1/4NW1/4, SE1/4NW1/4 & NE1/4SW1/4 OF SECTION 5,
T18S, R12E, W.M., CITY OF BEND, DESCHUTES COUNTY, OREGON



NOTE:
THE PREPARATION OF THIS MAP IS FOR THE PURPOSE OF IDENTIFYING THE LOCATION OF THE WATER RIGHT ONLY AND HAS NO INTENT TO PROVIDE DIMENSIONS OR LOCATION OF PROPERTY OWNERSHIP LINES.

WATER TRANSFERRED ON:

NW1/4NW1/4 -	
TL 400	0.669 AC
TL 500	0.158 AC
TL 700	0.084 AC
TL 1000	0.008 AC
SUBTOTAL:	0.919 AC

SW1/4NW1/4 -	
TL 500	0.186 AC
TL 600	0.210 AC
TL 700	0.129 AC
TL 1000	0.526 AC
SUBTOTAL:	1.051 AC

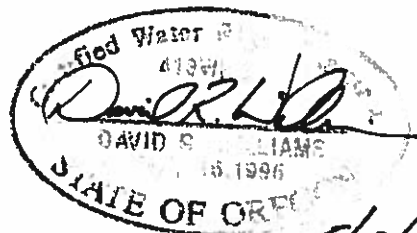
SE1/4NW1/4 -	
TL 500	0.103 AC
TL 600	3.799 AC
TL 700	0.020 AC
TL 1000	0.357 AC
TL 1702	0.311 AC
SUBTOTAL-	4.590 AC

NE1/4SW1/4 -	
TL 1702	0.540 AC
SUBTOTAL:	0.540 AC

NW1/4NW1/4 -	0.919 AC
SW1/4NW1/4 -	1.051 AC
SE1/4NW1/4 -	4.590 AC
NE1/4SW1/4 -	0.540 AC
TOTAL WATER ON -	7.100 AC



1" = 400'



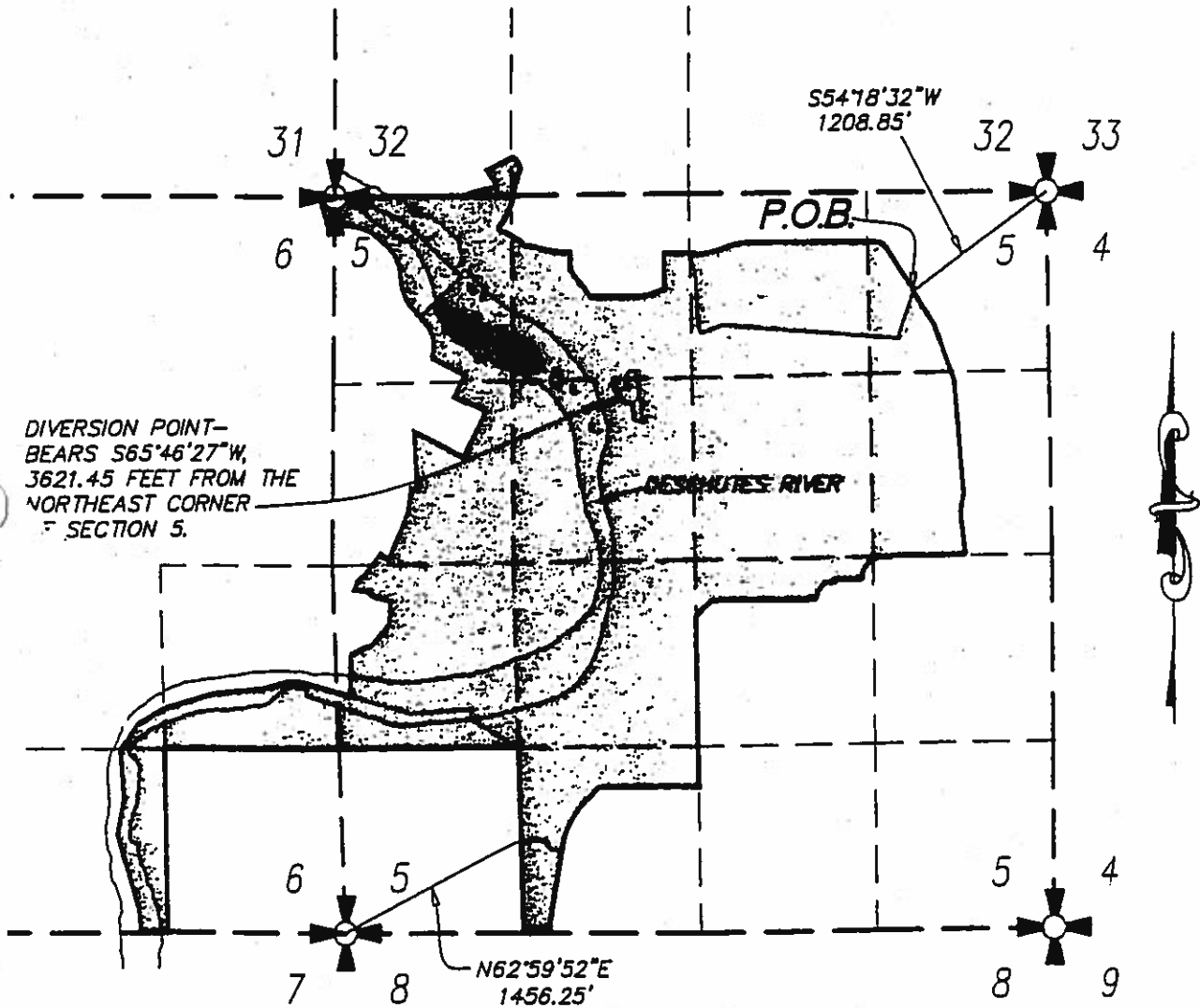
5/02/05

TL 1000

EXHIBIT *e*

RIVER BEND LIMITED PARTNERSHIP
CHANGE IN POINT OF DIVERSION

LOCATED IN SECTIONS 5 AND 6, T18S, R12E, AND
SECTION 32, T17S, R12E, BOTH OF THE WM, CITY OF
BEND, DESCHUTES COUNTY, OREGON



SCALE: 4" = 1 MILE

AREA CONTAINED WITHIN DISTRICT BOUNDARY=
326 ACRES, MORE OR LESS



09/19/02
h2oRts2001-4.dwg

T-10004