

ST. CHARLES MEDICAL CENTER  
CLAIM OF BENEFICIAL USE MAP  
TOWNSHIP 17 SOUTH, RANGE 12 EAST, SECTION 27  
OCTOBER 22, 2007



TRANSFER APPLICATION NO. T-9731

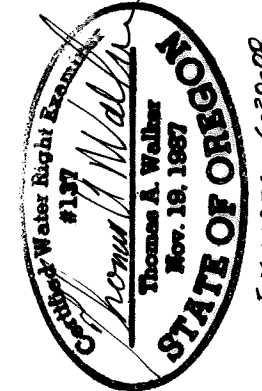
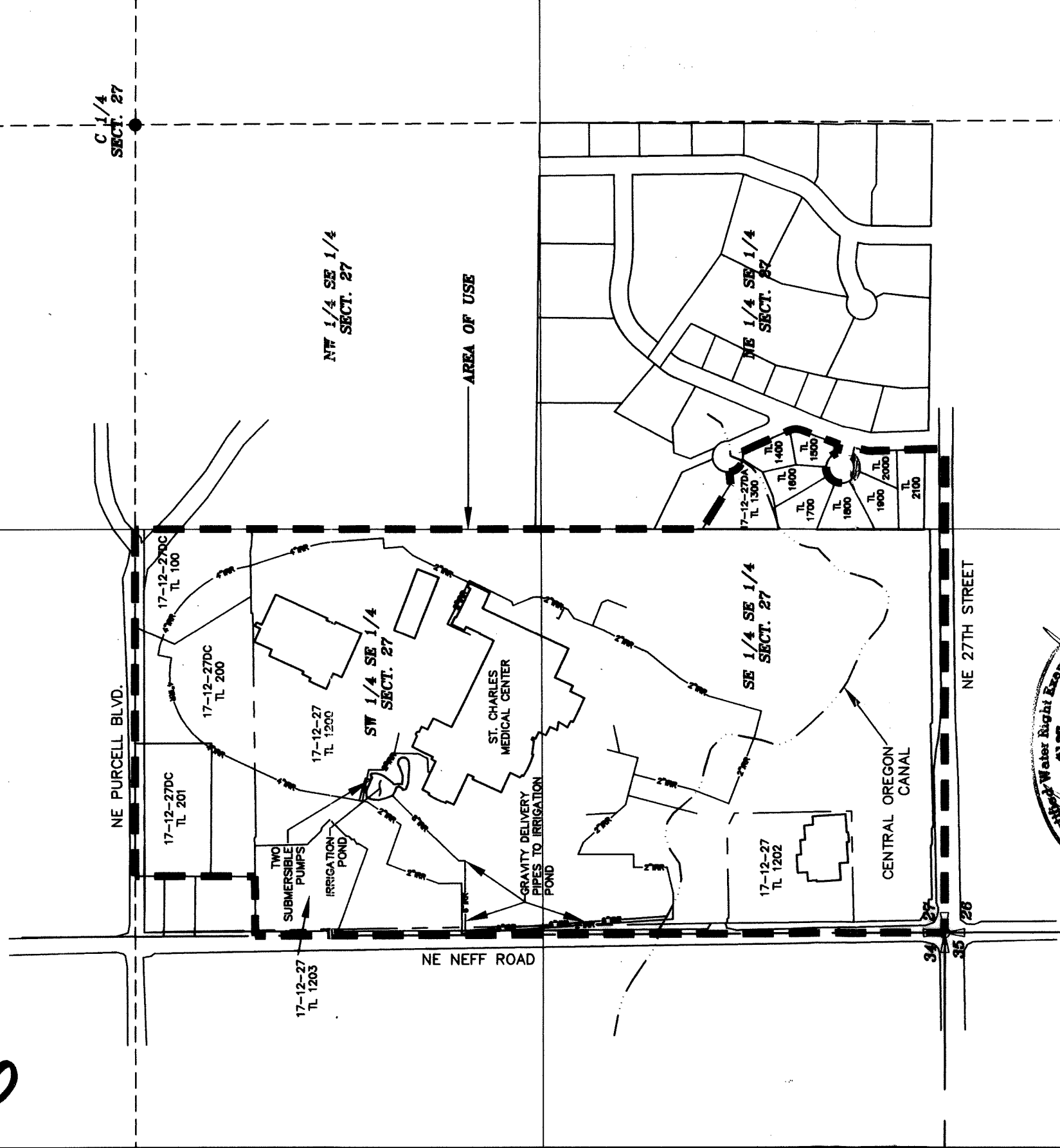
SCALE: 1=400'

NOTE: THE LOCATIONS OF FEATURES SHOWN ON THIS MAP WERE OBTAINED FROM ST. CHARLES MEDICAL CENTER INFRASTRUCTURE MAPPING AND CITY OF BEND AERIAL MAPPING.

**COBU MAP # 0306**

**RECEIVED**  
NOV 16 2007  
WATER RESOURCES DEPT  
SALEM, OREGON

**RECEIVED**  
NOV 15 2007  
WATER RESOURCES DEPT  
SALEM, OREGON



EXPIRES 6-30-08



AREA OF USE FOR  
QUASI-MUNICIPAL WATER RIGHT  
T-9731

POINT OF DIVERSION/POINT OF APPROPRIATION:

TOWNSHIP 18S, RANGE 11E, W.M.,  
SECTION 13, SW 1/4, NE 1/4.

NOTE: THIS MAP WAS PREPARED FOR THE PURPOSE OF IDENTIFYING THE LOCATION OF WATER RIGHTS. THIS MAP IS NOT INTENDED TO PROVIDE DIMENSIONS OR THE LOCATION OF PROPERTY OWNERSHIP LINES.

LOCATION: CENTRAL OREGON CANAL  
1520' SOUTH AND 1535' WEST FROM THE  
NORTHEAST CORNER OF SECTION 13.