



NOV 08 2007

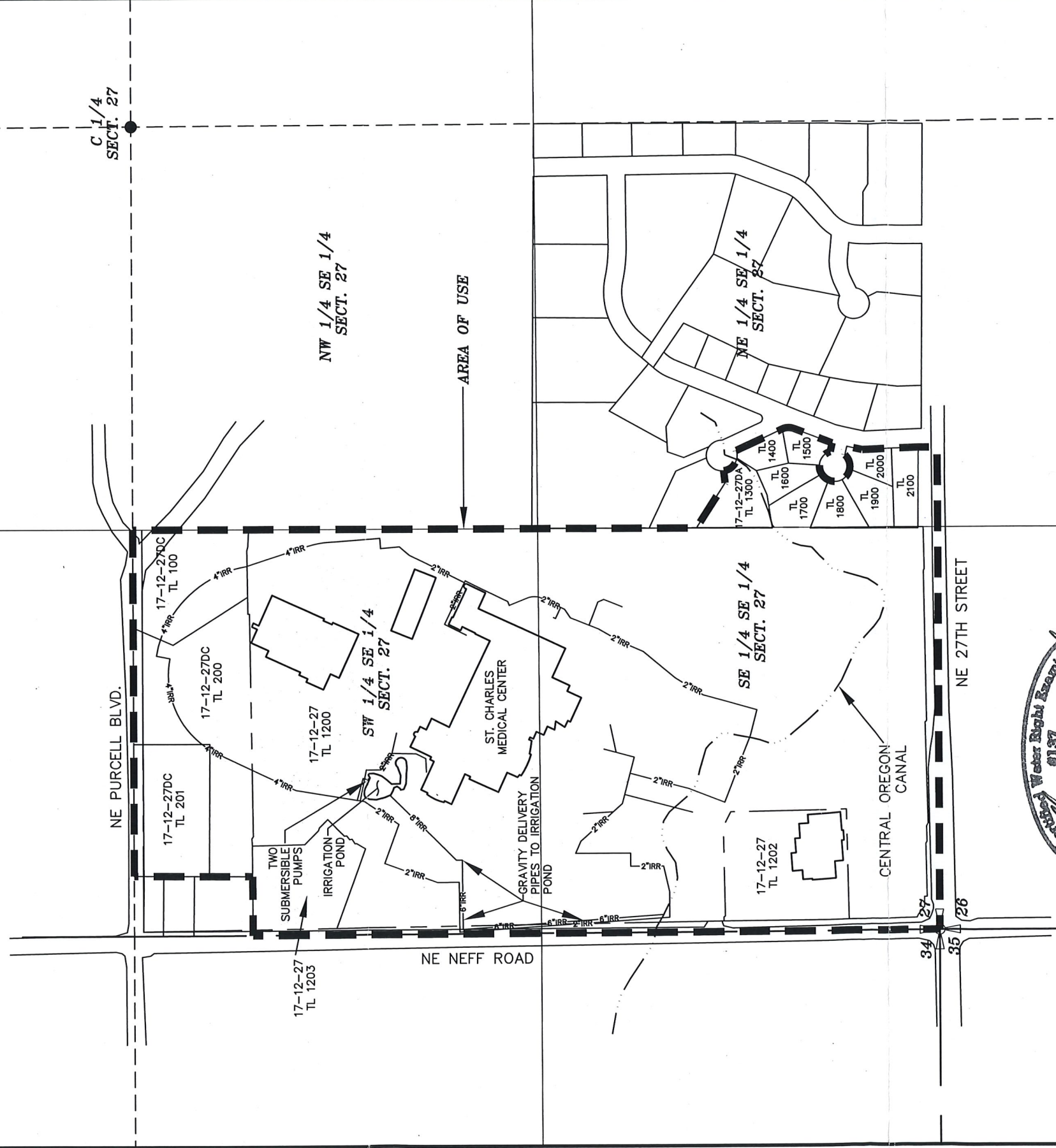
WATER RESOURCES DEPT  
SALEM, OREGON

ST. CHARLES MEDICAL CENTER  
CLAIM OF BENEFICIAL USE MAP  
TOWNSHIP 17 SOUTH, RANGE 12 EAST, SECTION 27,  
OCTOBER 22, 2007

TRANSFER APPLICATION NO. T-9299

SCALE: 1=400'

NOTE: THE LOCATIONS OF FEATURES SHOWN ON THIS  
MAP WERE OBTAINED FROM ST. CHARLES MEDICAL  
CENTER INFRASTRUCTURE MAPPING AND CITY OF  
BEND AERIAL MAPPING.



AREA OF USE FOR  
QUASI-MUNICIPAL WATER RIGHT  
T-9299



EXPIRES 6-30-08

POINT OF DIVERSION/POINT OF APPROPRIATION:

TOWNSHIP 18S, RANGE 11E, W.M.,  
SECTION 13, SW 1/4, NE 1/4.

LOCATION: CENTRAL OREGON CANAL  
1520' SOUTH AND 1535' WEST FROM THE  
NORTHEAST CORNER OF SECTION 13.

NOTE: THIS MAP WAS PREPARED FOR THE PURPOSE  
OF IDENTIFYING THE LOCATION OF WATER RIGHTS.  
THIS MAP IS NOT INTENDED TO PROVIDE DIMENSIONS  
OR THE LOCATION OF PROPERTY OWNERSHIP LINES.