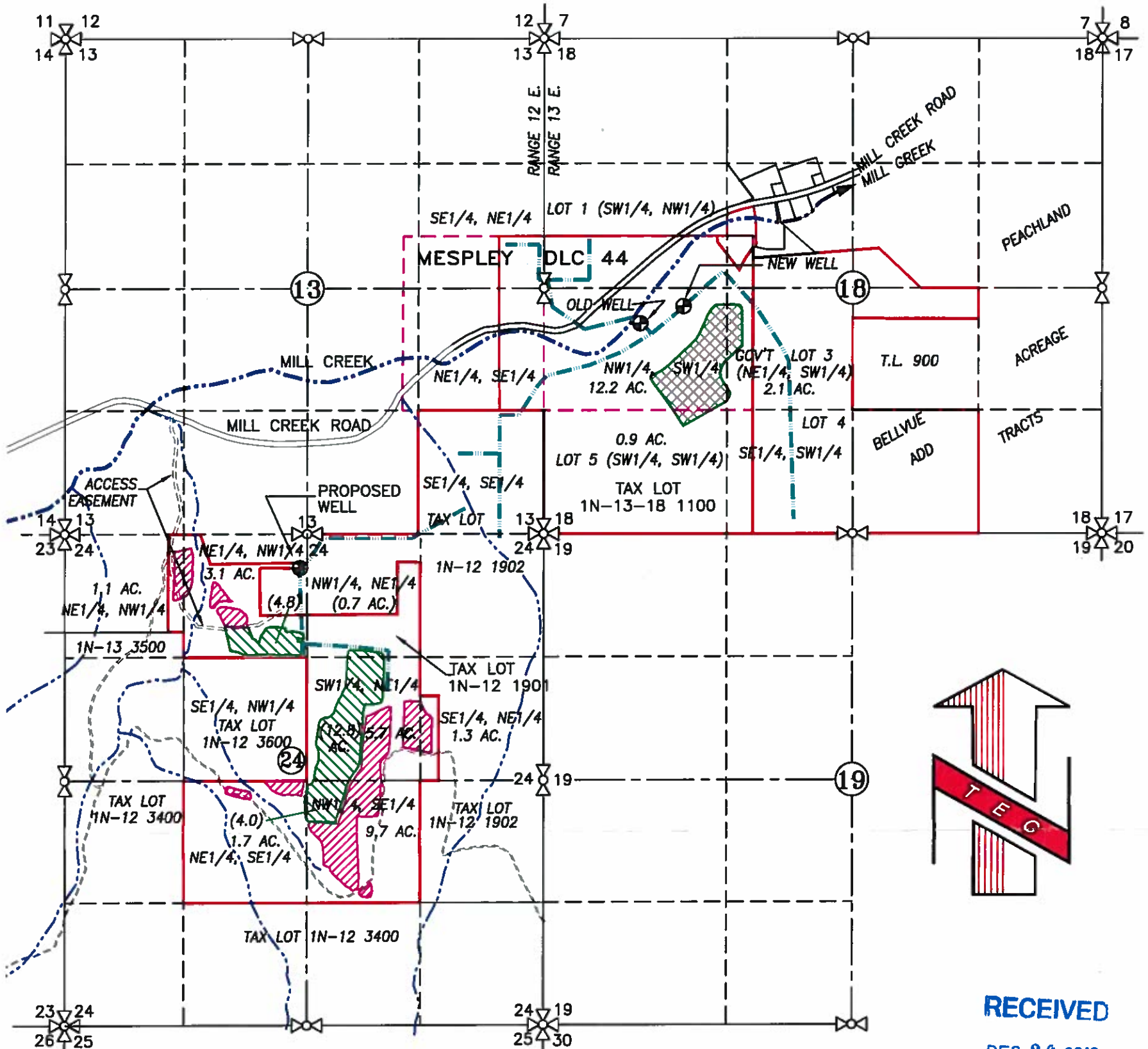


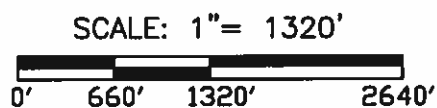
SECTIONS 13 & 24, TOWNSHIP 1 N. RANGE 12 E. AND
SECTION 18, TOWNSHIP 1 N. RANGE 13 E. W.M.
WASCO COUNTY, OREGON



LEGEND:

- OLD WELL: 1205' W. & 940' S. OF NE COR. D.L.C. #44
- NEW WELL: 743' W. AND 755' S. OF NE COR. D.L.C. #44
- PROPOSED WELL: 365' S. AND 75' W. OF N1/4 COR. SECTION 24
- PROPOSED TRANSFER FROM AREA = 15.2 ACRES (CERTIFICATES 88292 AND 88293)
- PROPOSED TRANSFER TO LOCATION: (22.3) AC. (GROSS AREA) x 30% = 6.7 AC. NET IRRIGATION (3' WIDE IRRIGATED STRIP WITH 7' NON IRRIGATED STRIP)
- PROPOSED TRANSFER TO LOCATION: 22.6 AC. (GROSS AREA) x 37.5% = 8.5 AC. NET IRRIGATION (3' WIDE IRRIGATED STRIP WITH 5' NON IRRIGATED STRIP)
- EXISTING IRRIGATION MAIN
- MESPIE D.L.C. 44 LINE
- STREAM WITH DIRECTIONAL FLOW

WATER RIGHT TRANSFER APPLICATION MAP



EXPIRES: 06/30/2020

NOTE:

"THIS MAP IS NOT INTENDED TO PROVIDE LEGAL DIMENSIONS OR LOCATIONS OF PROPERTY OWNERSHIP LINES."

W.O. #14154wr(Perm)

TRANSFER No. _____

IN THE NAME OF:

A&L VINEYARD ENTERPRISES, LLC

DATE: JULY 5, 2018

TENNESON ENGINEERING CORP.

CONSULTING ENGINEERS

3775 CRATES WAY

THE DALLES, OREGON 97058

PH. 541-298-9177 FAX 541-298-8857



Lands Under T-11823

Also the area where the proposed Temporary and Permanent Transfer will go to.

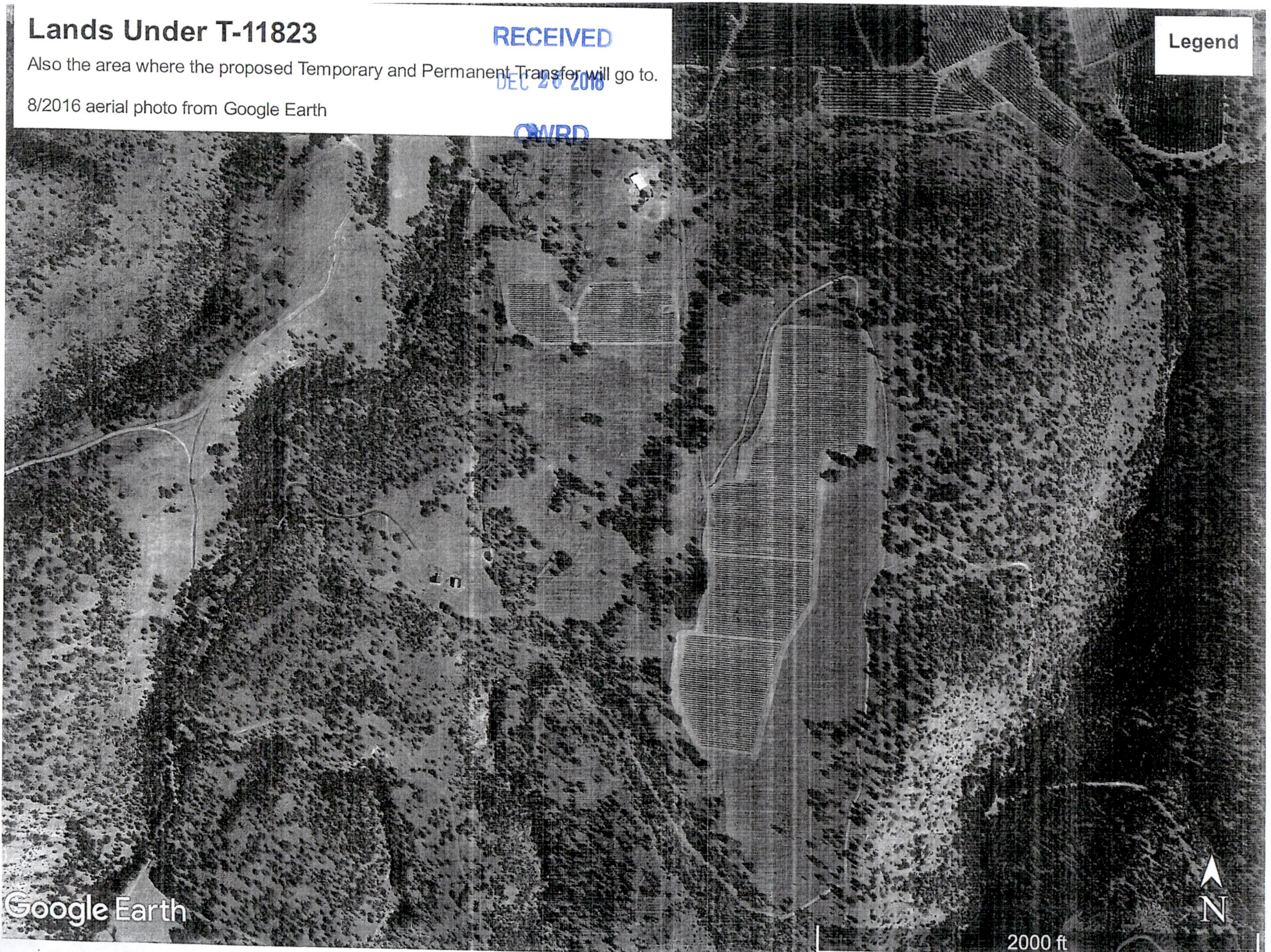
8/2016 aerial photo from Google Earth

RECEIVED

DEC 20 2016

OWRD

Legend



Google Earth

13081



2000 ft

From Lands

8/2016 aerial photo from Google Earth

Legend

RECEIVED
DEC 26 2018
OWRD

Google Earth



1000 ft