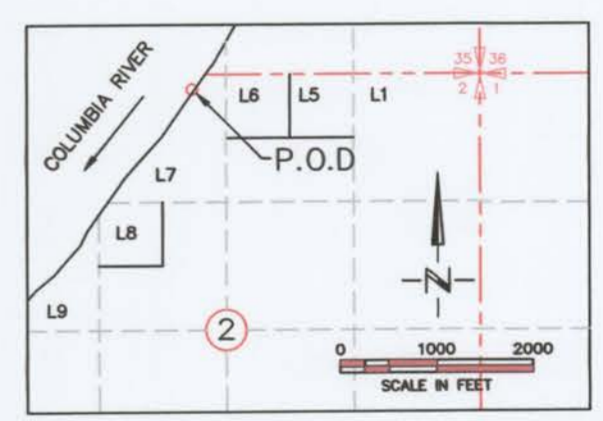
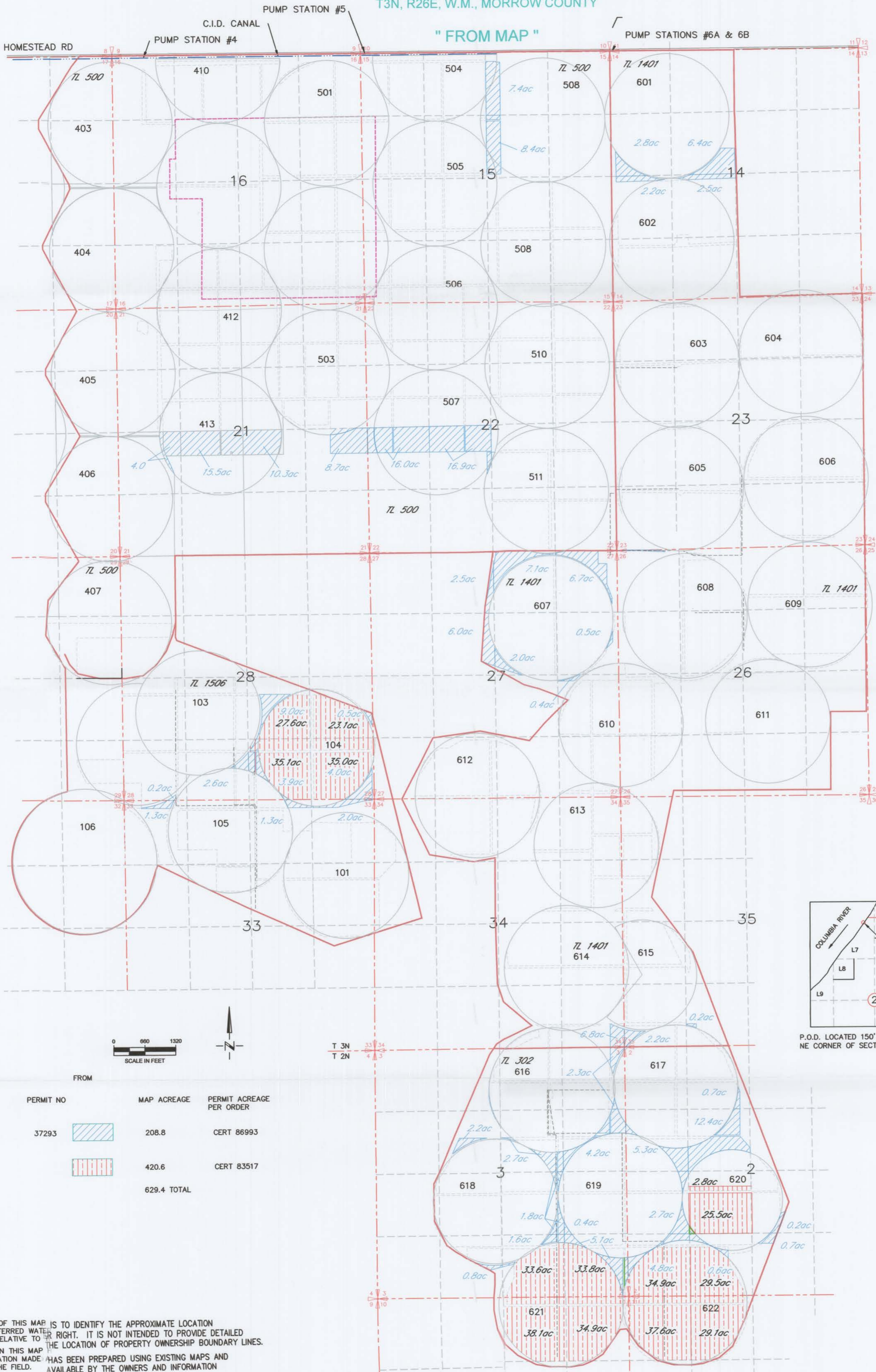
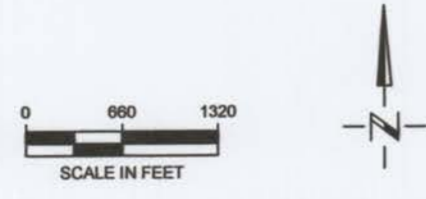


TRANSFER APPLICATION MAP
 to VELDE TO TIEGS + te velde
 T3N, R26E, W.M., MORROW COUNTY



P.O.D. LOCATED 150' SOUTH AND 2990' WEST FROM THE NE CORNER OF SECTION 2, T4N, R25E WM



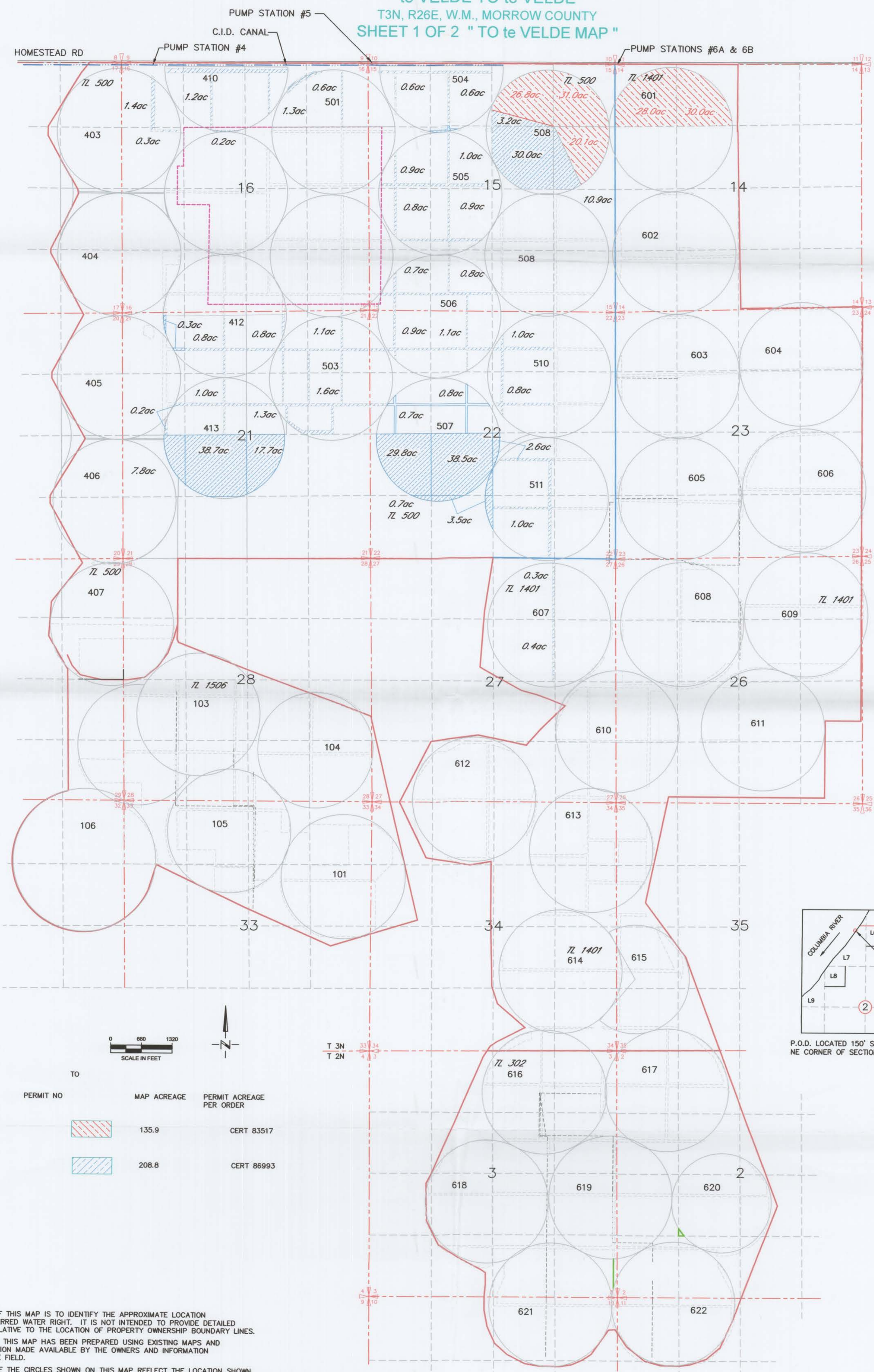
PERMIT NO	MAP ACREAGE	PERMIT ACREAGE PER ORDER
37293	208.8	CERT 86993
	420.6	CERT 83517
	629.4 TOTAL	

RECEIVED BY OWRD
 MAY 26 2016
 SALEM, OR

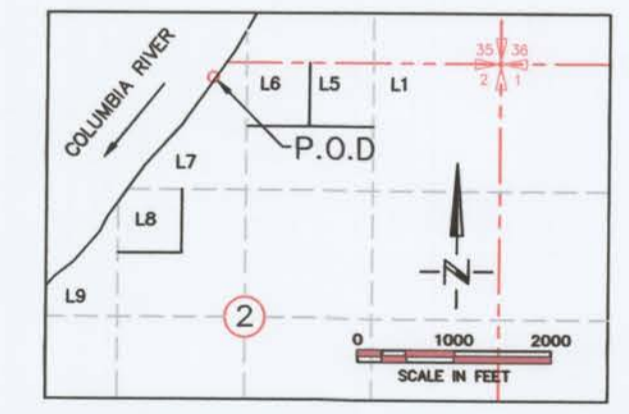
NOTE: THE PURPOSE OF THIS MAP IS TO IDENTIFY THE APPROXIMATE LOCATION OF THE TRANSFERRED WATER RIGHT. IT IS NOT INTENDED TO PROVIDE DETAILED INFORMATION RELATIVE TO THE LOCATION OF PROPERTY OWNERSHIP BOUNDARY LINES. INFORMATION ON THIS MAP HAS BEEN PREPARED USING EXISTING MAPS AND OTHER INFORMATION MADE AVAILABLE BY THE OWNERS AND INFORMATION AVAILABLE IN THE FIELD. THE LOCATION OF THE CIRCLES SHOWN ON THIS MAP REFLECT THE LOCATION SHOWN ON THE ORIGINAL FINAL PROOF OF SURVEY MAP. THEY ARE NOT NECESSARILY THE SAME LOCATION AS SHOWN ON THE T-6697 APPLICATION TRANSFER MAP.

THIS MAP WAS REVISED ON 3/23/11 BY DGV Consulting, PLLC THE HATCHED AREA IN THE SENE OF SEC 29, T3N, R26E, WM WAS RECONFIGURED AND THE ACREAGE IN THE NESW OF SEC 22, T3N, R26E, WM WAS CORRECTED FROM 23.2 TO 16.9.

TRANSFER APPLICATION MAP
te VELDE TO te VELDE
T3N, R26E, W.M., MORROW COUNTY
SHEET 1 OF 2 "TO te VELDE MAP"



PERMIT NO	MAP ACREAGE	PERMIT ACREAGE PER ORDER
	135.9	CERT 83517
	208.8	CERT 86993



P.O.D. LOCATED 150' SOUTH AND 2990' WEST FROM THE NE CORNER OF SECTION 2, T4N, R25E, WM

NOTE:
 THE PURPOSE OF THIS MAP IS TO IDENTIFY THE APPROXIMATE LOCATION OF THE TRANSFERRED WATER RIGHT. IT IS NOT INTENDED TO PROVIDE DETAILED INFORMATION RELATIVE TO THE LOCATION OF PROPERTY OWNERSHIP BOUNDARY LINES. INFORMATION ON THIS MAP HAS BEEN PREPARED USING EXISTING MAPS AND OTHER INFORMATION MADE AVAILABLE BY THE OWNERS AND INFORMATION OBTAINED IN THE FIELD.
 THE LOCATION OF THE CIRCLES SHOWN ON THIS MAP REFLECT THE LOCATION SHOWN ON THE ORIGINAL FINAL PROOF SURVEY MAP. THEY ARE NOT NECESSARILY THE SAME LOCATION AS SHOWN ON THE T-6697 APPLICATION TRANSFER MAP.

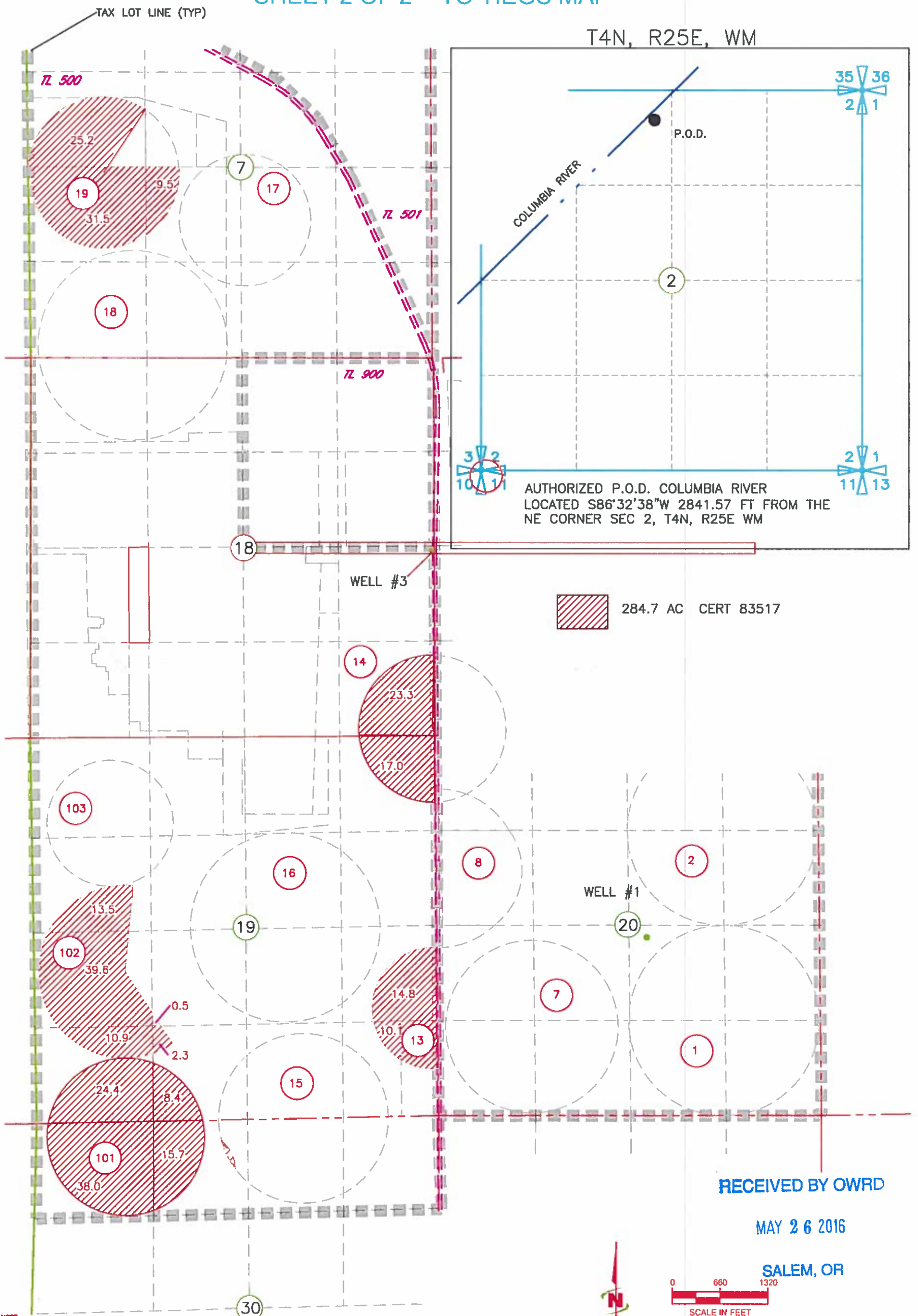
DRAWING: \\Kwfiles\public\Project\30-08-016 - Porfily Water Rights Consulting\00 Misc Engineering\Cad\te VELDE\2016 TRANSFER\30-08-016 te Velde TO TT.dwg
 PRINTED BY: rwillard on 05/18/16 11:09 AM

THIS MAP WAS REVISED ON 3/23/11 BY DGV Consulting, PLLC
 THE HATCHED AREA IN THE SENE OF SEC 29, T3N, R26E, WM WAS RECONFIGURED AND THE ACREAGE IN THE NESW OF SEC 22, T3N, R26E, WM WAS CORRECTED FROM 23.2 TO 16.9.

Transfer 301P 1 of 2
 te VELDE TO te VELDE

TRANSFER APPLICATION MAP
 to VELDE TO TIEGS
 T4N, R26E, W.M., MORROW COUNTY
 SHEET 2 OF 2 " TO TIEGS MAP "

T4N, R25E, WM



AUTHORIZED P.O.D. COLUMBIA RIVER
 LOCATED S86°32'38"W 2841.57 FT FROM THE
 NE CORNER SEC 2, T4N, R25E WM

284.7 AC CERT 83517

RECEIVED BY OWRD

MAY 26 2016

SALEM, OR

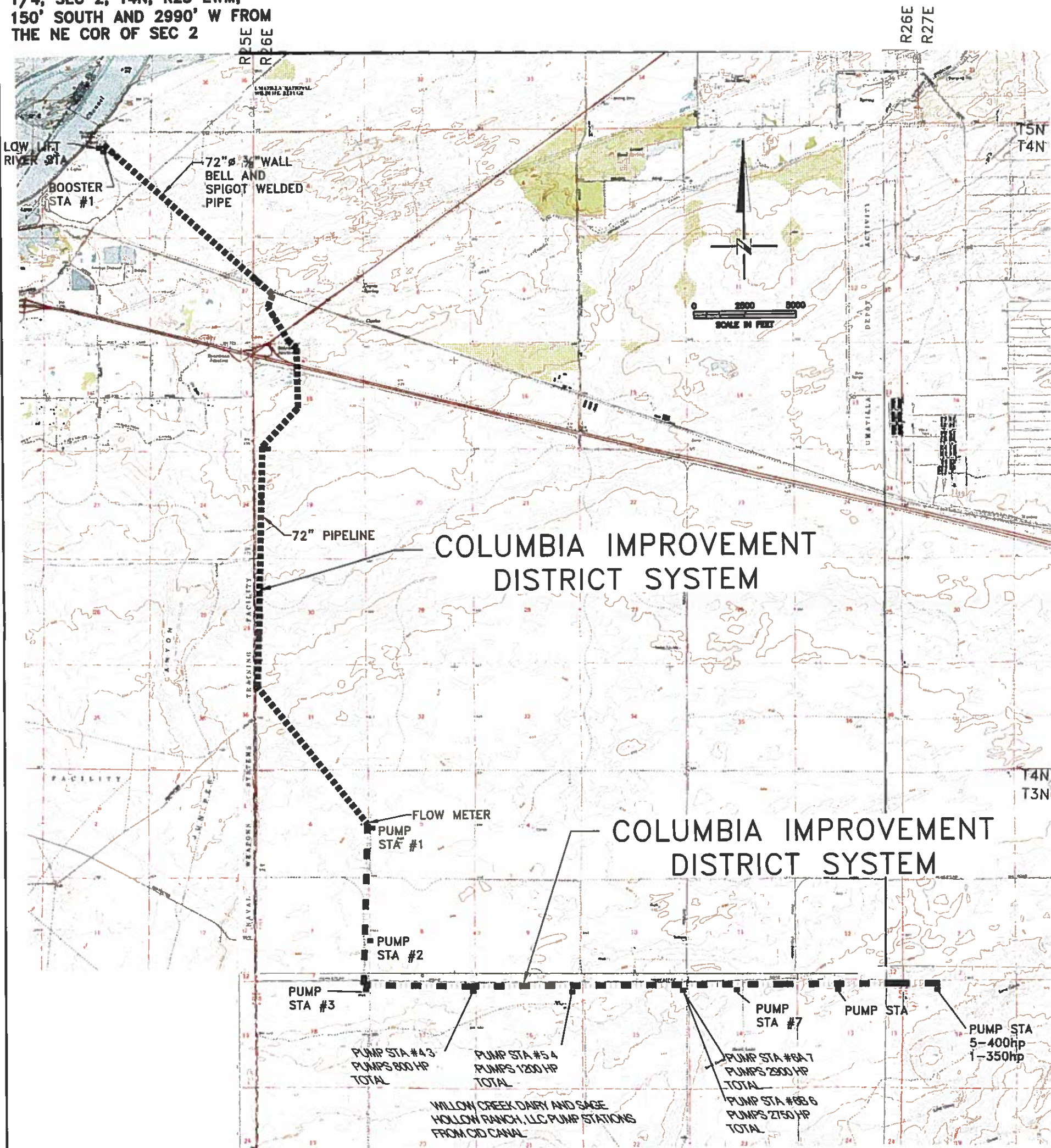


NOTE:
 THE PURPOSE OF THIS MAP IS TO IDENTIFY THE APPROXIMATE LOCATION OF THE WATER RIGHT. IT IS NOT INTENDED
 TO PROVIDE INFORMATION RELATIVE TO THE LOCATION OF PROPERTY OWNERSHIP BOUNDARY LINES. PIPE LOCATIONS
 AND SIZES WERE PROVIDED BY FARM OPERATIONAL PERSONNEL AND ARE APPROXIMATE LOCATIONS AND
 SIZES.
 DRAWING: \\kwdfiles\public\Project\30-08-016 - Porly Water Rights Consulting\00 Mic Engineering\Cad\to VELDE\30-08-016 TO TIEGS.dwg
 PRINTED BY: rwillard on 05/17/16 09:49 AM

to VELDE DELIVERY SYSTEM
FROM THE COLUMBIA RIVER

T 2&3 N, R 26, 27 & 28 E. W.M.

P.O.D. COLUMBIA RIVER
LOCATED IN LOT 7 NE 1/4 NW
1/4, SEC 2, T4N, R25 EWM,
150' SOUTH AND 2990' W FROM
THE NE COR OF SEC 2



RECEIVED BY OWRD

MAY 26 2016

SALEM, OR

T 12398