

**IMPORTANT**  
This Map for Assessment  
and Taxation Purposes  
**ONLY**

**SEC. 20 T9S R5W WM  
POLK COUNTY**

9.5.20  
**To Lands**

POU Map for  
Certificate 16441


Scale 1" = 400'

POD #2

Canceled No.

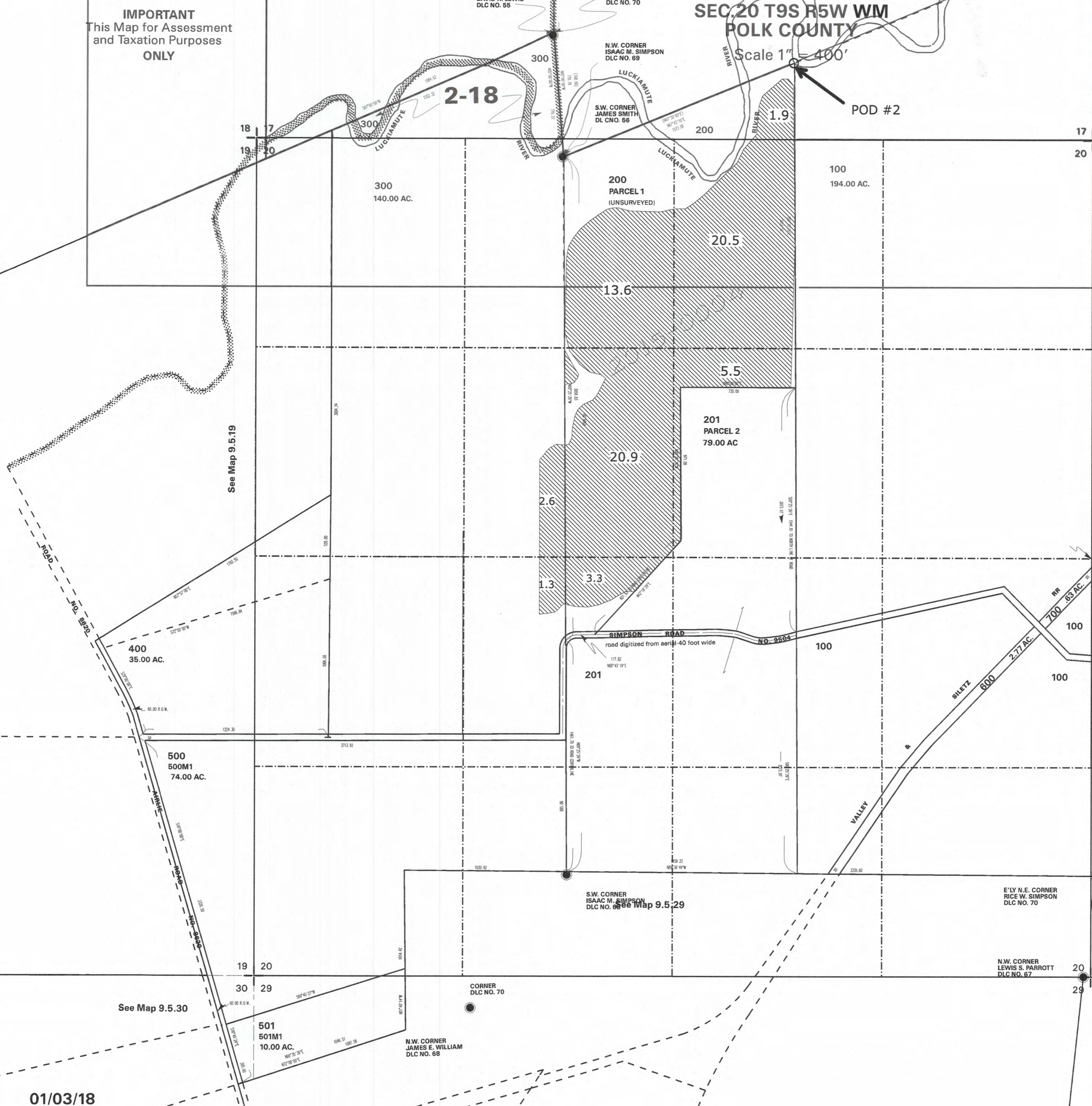


Legend

 Certificate 16641 POU

POD #2 Location: 480' North  
and 1890' West of the  
NE Corner of Section  
20, Twp 9 S, Rng 5 W,  
Willamette Meridian.

**RECEIVED**  
APR 24 2018  
**OWRPD**



See Map 9.5.19

See Map 9.5.30

See Map 9.5.29

01/03/18

9.5.20

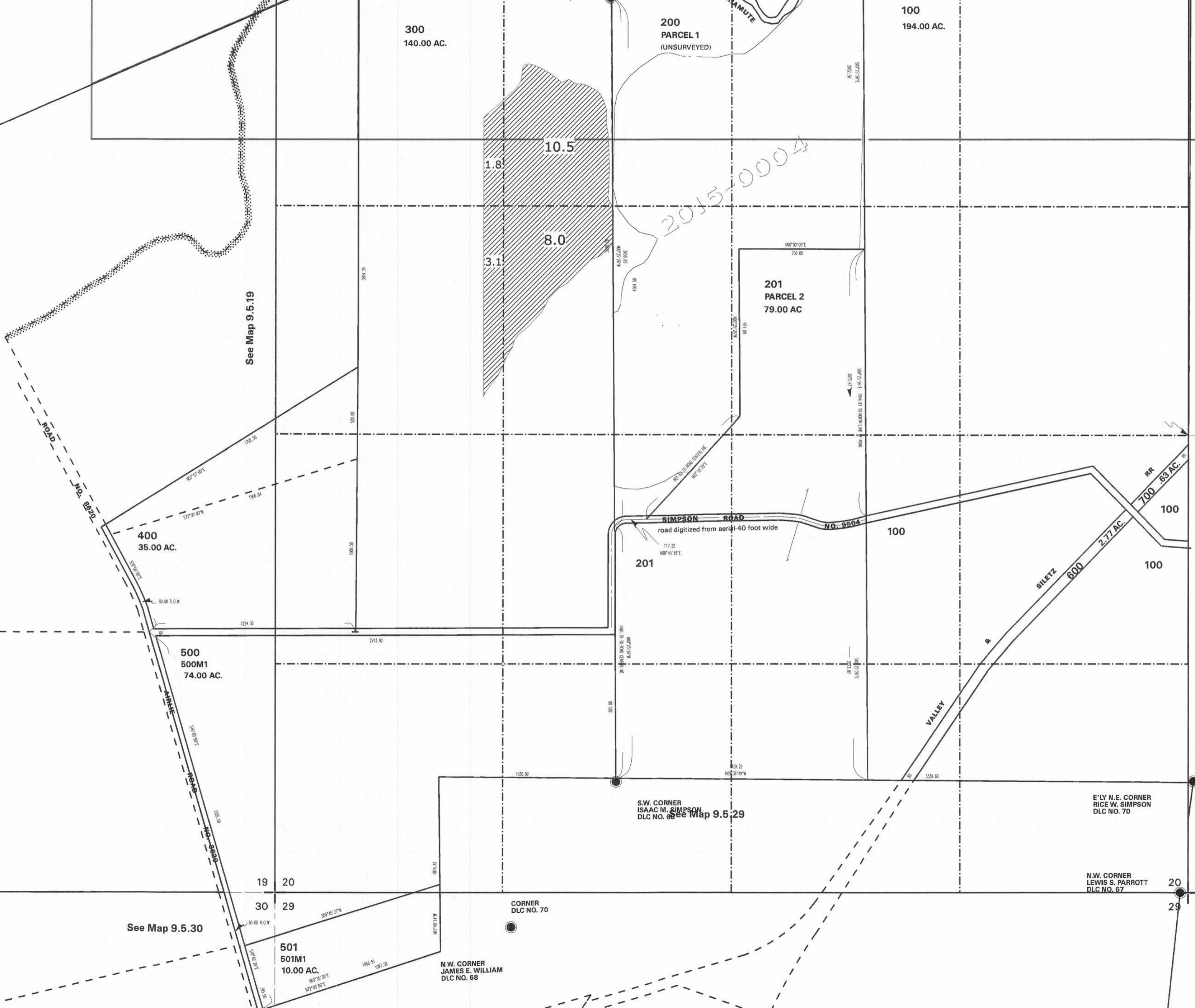
**IMPORTANT**  
This Map for Assessment  
and Taxation Purposes  
**ONLY**

**SEC. 20 T9S R5W WM  
POLK COUNTY**

Scale 1" = 400'

9.5.20  
**To Land**  
POU Map for  
Certificate 7

18 17  
19 20 21



Cancel



Legend

Certificate 764

POD Location: 480'  
and 1890' West  
NE Corner of S  
20, Twp 9 S, R  
Willamette Me

**RECEIVED**  
APR 24 2018  
**OWRPD**

01/03/18

9.5.20

**IMPORTANT**  
This Map for Assessment  
and Taxation Purposes  
**ONLY**

**SEC. 20 T9S R5W WM  
POLK COUNTY**

9.5.20

**To Lands**

POU Map for  
Certificate 37073

Scale 1" = 400'


POD #2

18 17  
19 20 17 16  
20 21

Canceled No.

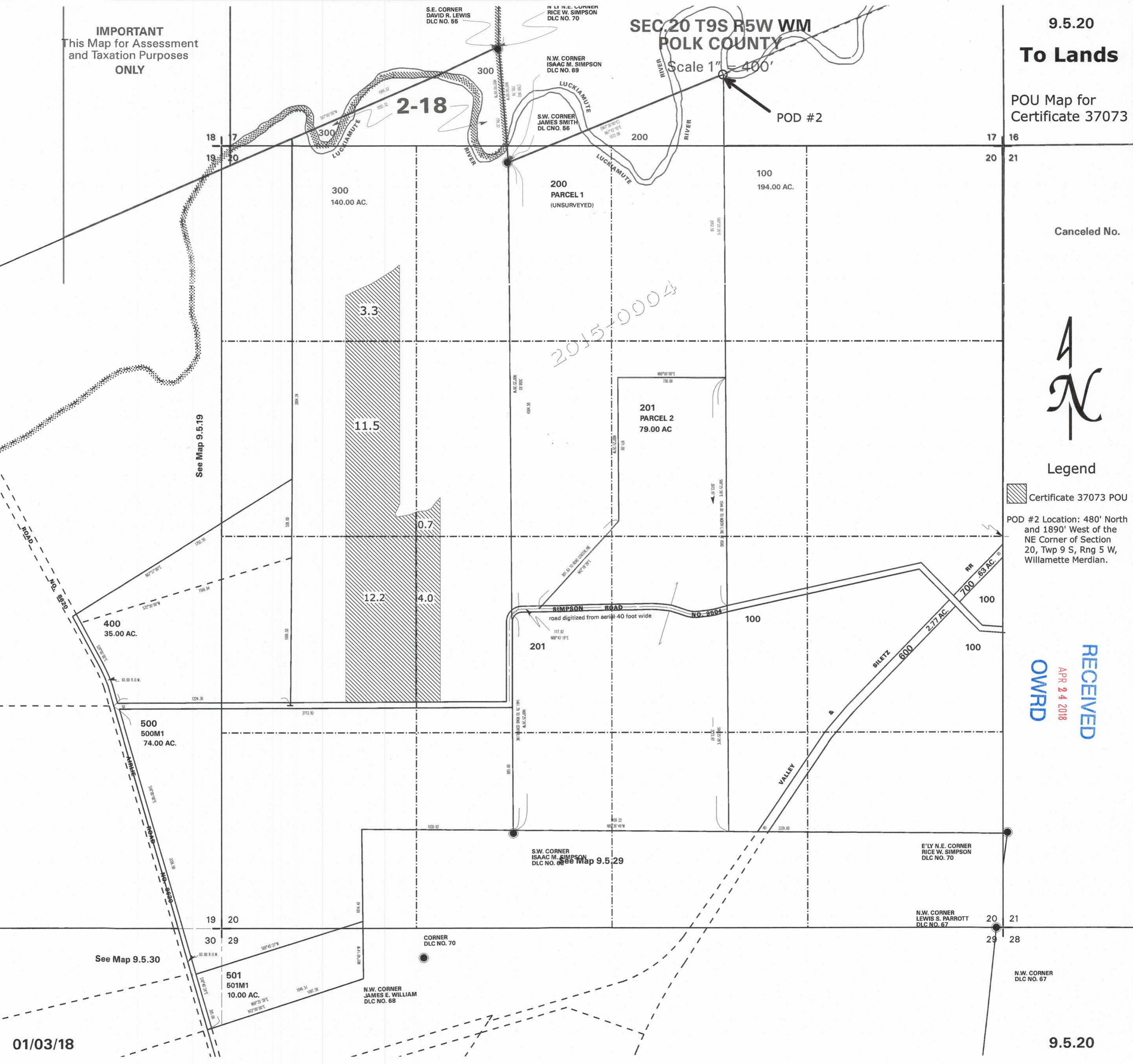


Legend

 Certificate 37073 POU

POD #2 Location: 480' North  
and 1890' West of the  
NE Corner of Section  
20, Twp 9 S, Rng 5 W,  
Willamette Meridian.

**RECEIVED**  
APR 24 2018  
**OWPRD**



01/03/18

9.5.20

**IMPORTANT**  
This Map for Assessment  
and Taxation Purposes  
**ONLY**

**SEC 20 T9S R5W WM  
POLK COUNTY**

9.5.20  
**To Lands**

POU Map for  
Certificate 33571

Scale 1" = 400'

POD #2

18 17  
19 20  
17 16  
20 21

Canceled No.

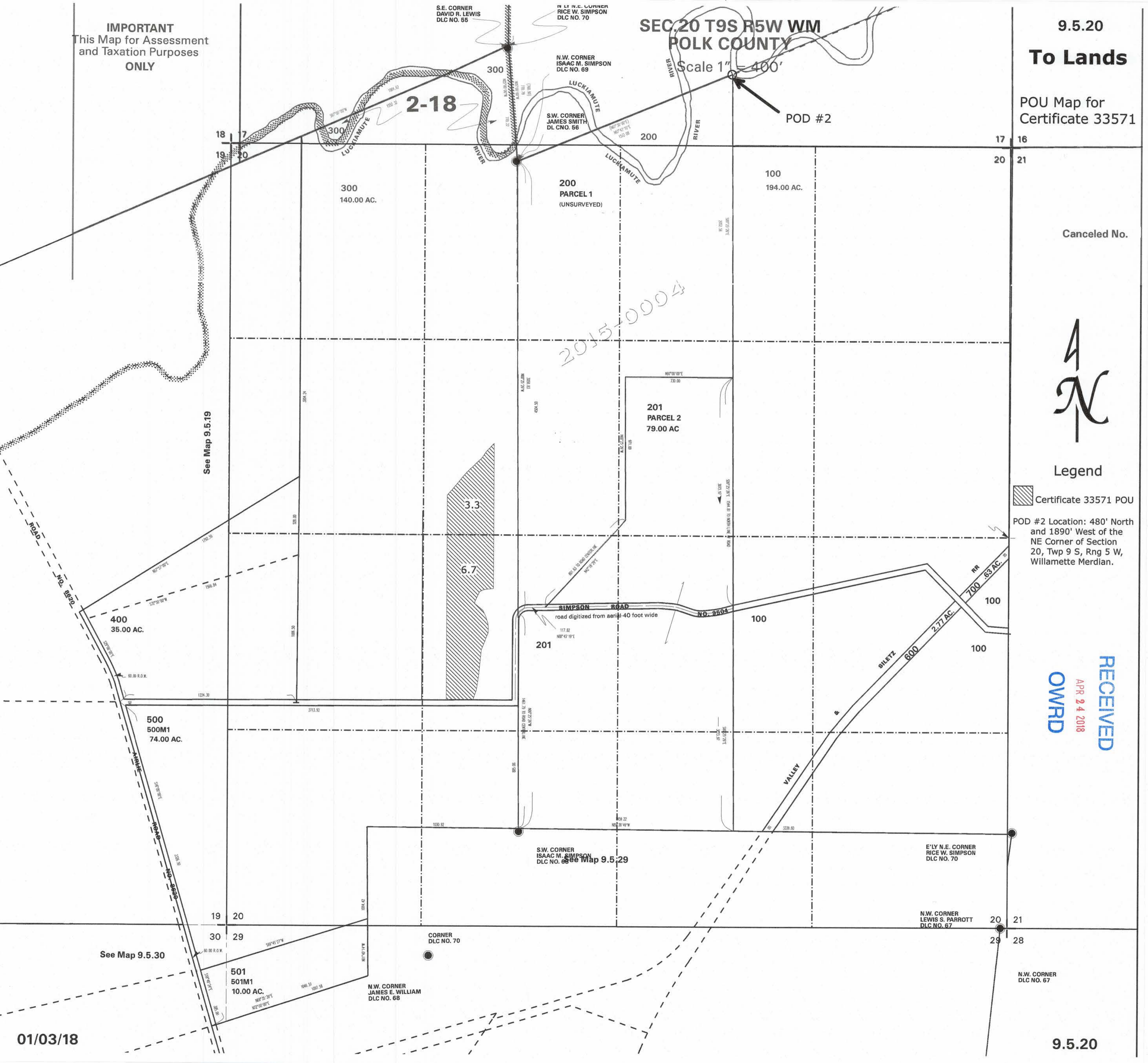


Legend

Certificate 33571 POU

POD #2 Location: 480' North  
and 1890' West of the  
NE Corner of Section  
20, Twp 9 S, Rng 5 W,  
Willamette Meridian.

**RECEIVED**  
APR 24 2018  
**OWRPD**



See Map 9.5.19

See Map 9.5.30

2015-0004

see Map 9.5.29

01/03/18

9.5.20