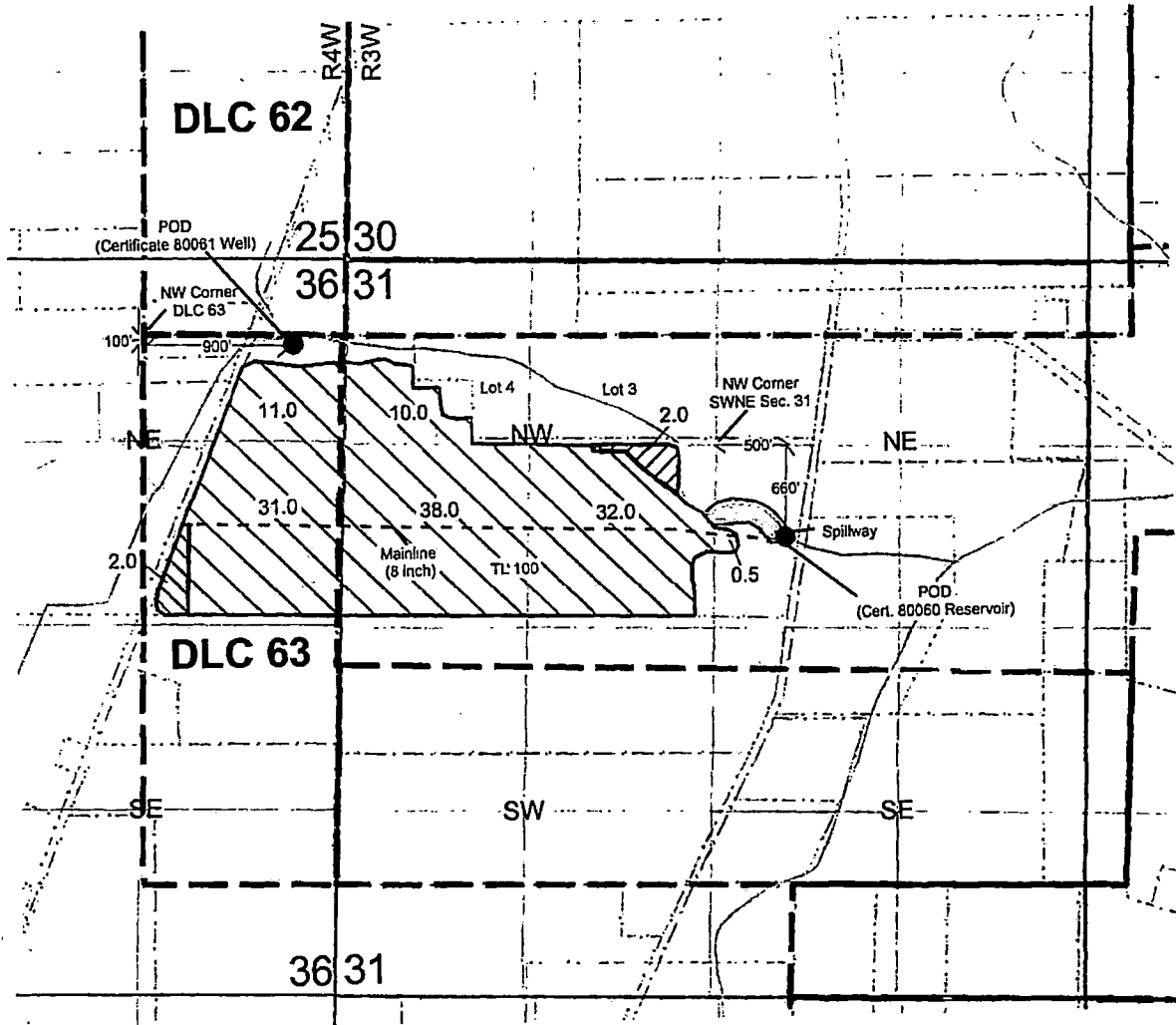


T4S, R3W, Sec 31 &
T4S, R4W, Sec 36, WM
TRANSFER APPLICATION MAP
YAMHILL COUNTY

Received by OWRD

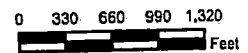
FEB 26 2019

Salem, OR



Primary Cert. 80060 POD (priority date 6/6/1990) is located 660' S and 500' E from the NW corner of SWNE Section 31
Supplemental Cert. 80061 POD (priority date 6/6/1990) is located 100' S and 990' E from the NW corner of DLC 63

1 inch = 1,320 feet



World Geodetic System (WGS)
Datum of 1984
Prepared February 26, 2019

Sources: BLM CadNSDI PLSS
(GeoCommunicator LSIS, 2014), The
Oregon Map (ORMAP tax lots, 2016),
available County roads, lakes, and
rivers GIS shapefiles (EnviroLogic
Resources, ArcGIS Backup Files,
2016) Google Earth aerial

This map was prepared for the
purpose of identifying the location of a
water right only and is not intended to
provide legal dimensions or locations

Explanation

- Place of Diversion (POD)
- - - Mainline
- Roads
- Water Feature
- Tax Lots
- ▨ Remaining Lands (Cert. 80060 and 80061)
- ▧ To Lands (Cert. 80060 and 80061)
- ▩ From Lands (Cert. 80060 and 80061)

