

Map 1 of 2

Permit Amendment Map

Application G-15834
Permit G-17506

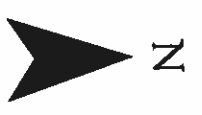
Wood River Dist. Improvement Co.
T 33 S, R 7.5 E WM
Sections 7, 8, 9, 10, 15,
16, 17, 19, 20, 21, 29, 32, 33

Legend

- ▲ Proposed Wells & #1A Corrected
- ▨ Irrigated by Wells 1 and 3
- ▧ Irrigated by Wells 1A, 2, 6, 7
- ▩ Nicholson Irrigation by Well 1A
- ▤ Irrigated by Wells 4 and 5
- ▥ Irrigated by Well 8
- Ditches
- ~~~ Creeks

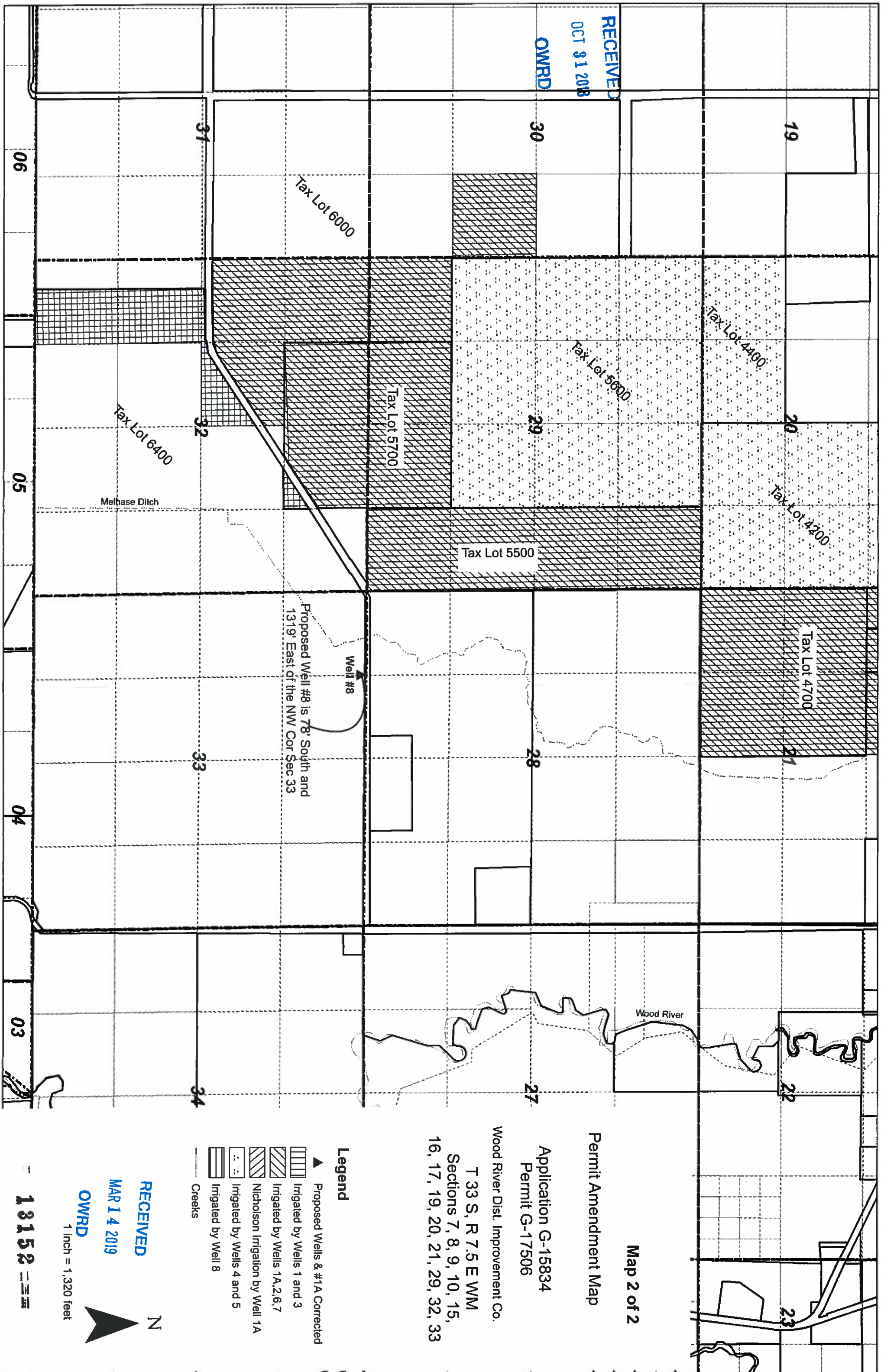
RECEIVED
MAR 14 2019

OWRD



1 inch = 1,320 feet

19159



RECEIVED

OCT 31 2018

OWRD

Map 2 of 2

Permit Amendment Map

Application G-15834
Permit G-17506

Wood River Dist. Improvement Co.

T 33 S, R 7.5 E WM
Sections 7, 8, 9, 10, 15,
16, 17, 19, 20, 21, 29, 32, 33

Proposed Well #8 is 78' South and
1319' East of the NW Cor Sec 33

Legend

- ▲ Proposed Wells & #1A Corrected
- ▨ Irrigated by Wells 1 and 3
- ▧ Irrigated by Wells 1A, 2, 6, 7
- ▩ Nicholson Irrigation by Well 1A
- ▤ Irrigated by Wells 4 and 5
- ▥ Irrigated by Well 8
- Creeks

RECEIVED

MAR 14 2019

OWRD

1 inch = 1,320 feet



18152