

Application Transfer Map - Middle Fork Irrigation District (property owner = Rice)

Township 1 South, Range 10 East, Section 19, NE/NE (taxlot 100)  
 Township 1 South, Range 10 East, Section 20, NW/NW (taxlot 400 and 401)

Primary Certificate: 74264  
 Supplementary Certificate: 89321, 89356

**TAXLOT 100:**  
 2.4 ac = existing  
 1.6 ac = off  
 0 ac = on  
 0.8 ac = remaining

**TAXLOT 400:**  
 3.5 ac = existing  
 2.45 ac = off  
 0 ac = on  
 1.05 ac = remaining

**TAXLOT 401 (NWNW):**  
 12.3 ac = existing  
 5.2 ac = off  
 0.9 ac = on  
 7.1 ac = remaining

**TAXLOT 401 (NWNW):**  
 0 ac = existing  
 0 ac = off  
 8.35 ac = on  
 8.35 ac = proposed

0.8 acres REMAINING

1.6 acres OFF

1.05 acres REMAINING

2.45 acres OFF

7.1 acres REMAINING

0.9 acres ON

8.35 acres ON

8.35 acres PROPOSED

5.2 acres OFF  
 (0.9 stays within NWNW)  
 (4.3 ac moves to NENW)

T1S R10E S19 NENE  
 T1S R10E S19 SENE

T1S R10E S20 NWNW  
 T1S R10E S20 SWNW

T1S R10E S20 NENW  
 T1S R10E S20 SENW

↑ North Scale (1" = 400')

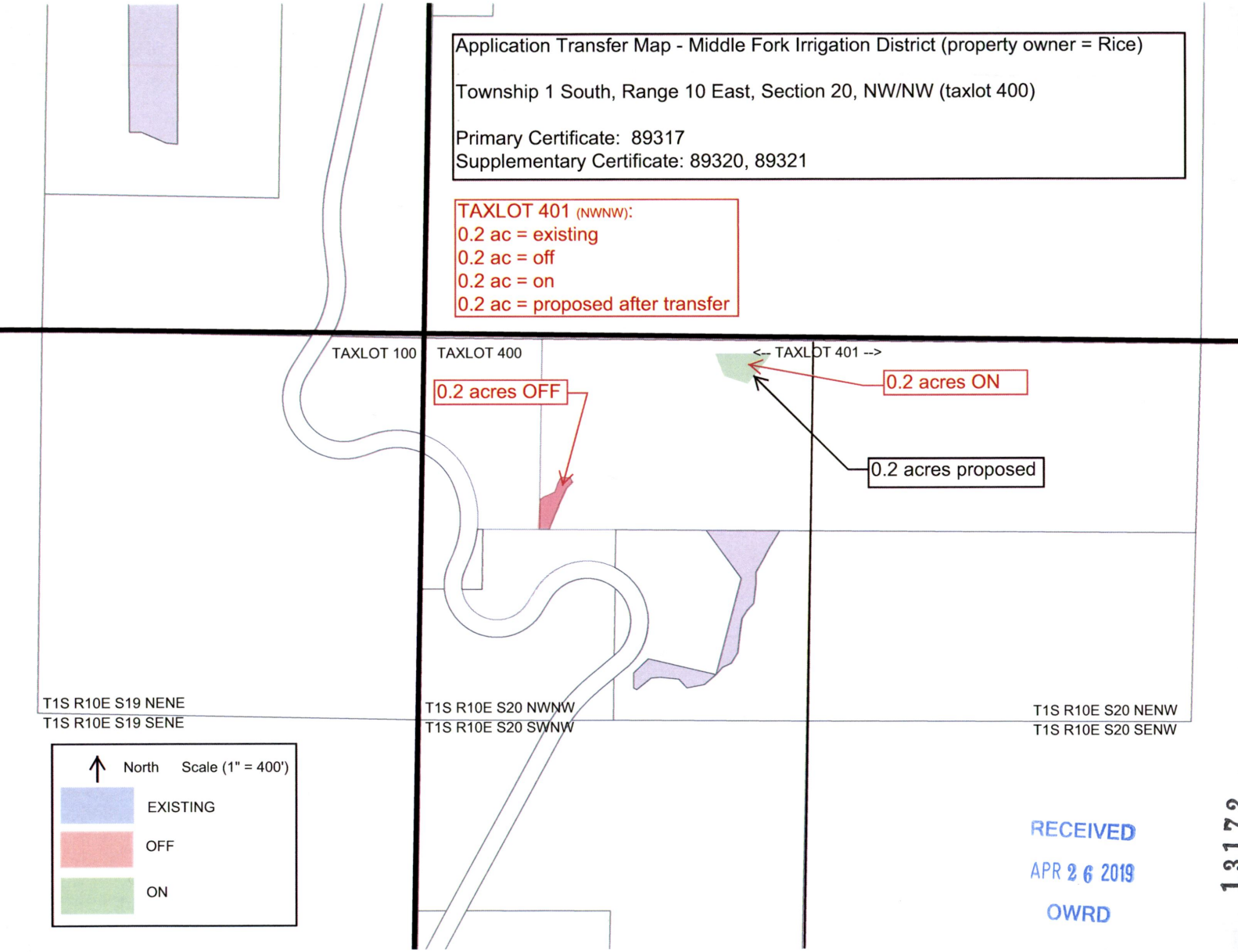
- EXISTING
- OFF
- ON

RECEIVED  
 APR 26 2019  
 OWRD

13172

Application Transfer Map - Middle Fork Irrigation District (property owner = Rice)  
 Township 1 South, Range 10 East, Section 20, NW/NW (taxlot 400)  
 Primary Certificate: 89317  
 Supplementary Certificate: 89320, 89321

**TAXLOT 401 (NWNW):**  
 0.2 ac = existing  
 0.2 ac = off  
 0.2 ac = on  
 0.2 ac = proposed after transfer



RECEIVED  
 APR 26 2019  
 OWRD

13172