

(PILOT ROCK NW, OR)

### Cert. 2488: Proposed Place of Use/Irrigated Acres

(PILOT ROCK NE, OR)

PILOT ROCK SE, OR QUADRANGLE

OREGON  
AERIAL PHOTO SERIES

(SEVENMILE CREEK NW, OR)

118° 47' 51.4165" W  
045° 24' 24.9999" N +

118° 46' 38.6012" W  
+ 045° 24' 24.9689" N



(C) Copyright 2016, Trimble Navigation Limited

045° 23' 53.2056" N +  
118° 47' 51.4165" W

(GRANITE MEADOWS NE, OR)

Printed: Mon Apr 15, 2019

+ 045° 23' 53.2056" N  
118° 46' 38.6012" W

SCALE 1:6000


(TAMARACK GULCH NW, OR)

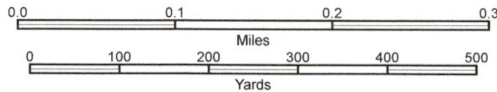
PILOT ROCK SE, OR, OR

JUL 1, 2016


  
 Water Right Solutions
   

  
 JUL 22 2019
   
 RECEIVED

Declination
   

  
 MN 14° 19' E



CONTOUR INTERVAL UNKNOWN FT  
(BASE MAP VERTICAL DATUM)

(COOMBS CANYON)

### Cert. 2488: Proposed Place of Use/Irrigated Acres

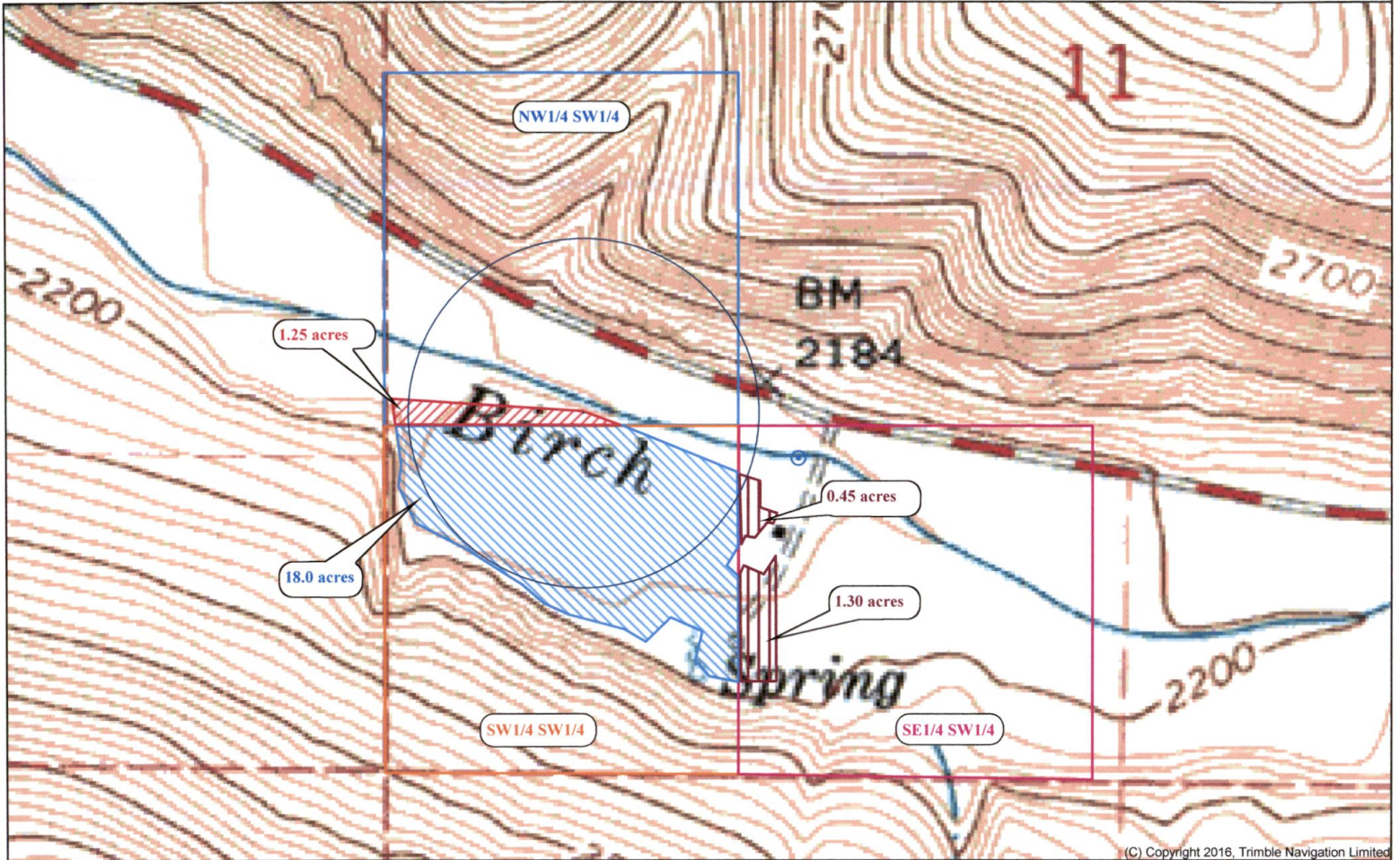
(MC KAY RESERVOIR)

PILOT ROCK QUADRANGLE  
OREGON  
TOPOGRAPHIC SERIES

(TABLE ROCK)

118° 47' 51.4165" W  
045° 24' 24.9699" N

118° 46' 38.6012" W  
045° 24' 24.9699" N



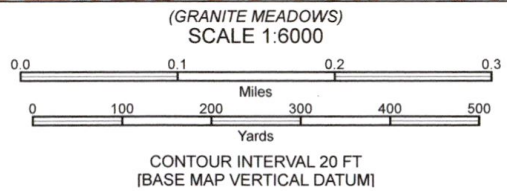
(C) Copyright 2016, Trimble Navigation Limited

045° 23' 53.2056" N  
118° 47' 51.4165" W

Printed: Mon Apr 15, 2019  
045° 23' 53.2056" N  
118° 46' 38.6012" W

OWRD  
RECEIVED  
JUL 22 2019  
Water Right Solutions

Declination  
MN  
MN 14° 19' E



(TAMARACK GULCH)

PILOT ROCK, OR  
DEC 31, 1969

**Cert. 2488: Authorized/Proposed Point of Diversion**

(COOMBS CANYON) 118° 48' 04.7945" W  
045° 24' 40.5106" N

(MC KAY RESERVOIR)

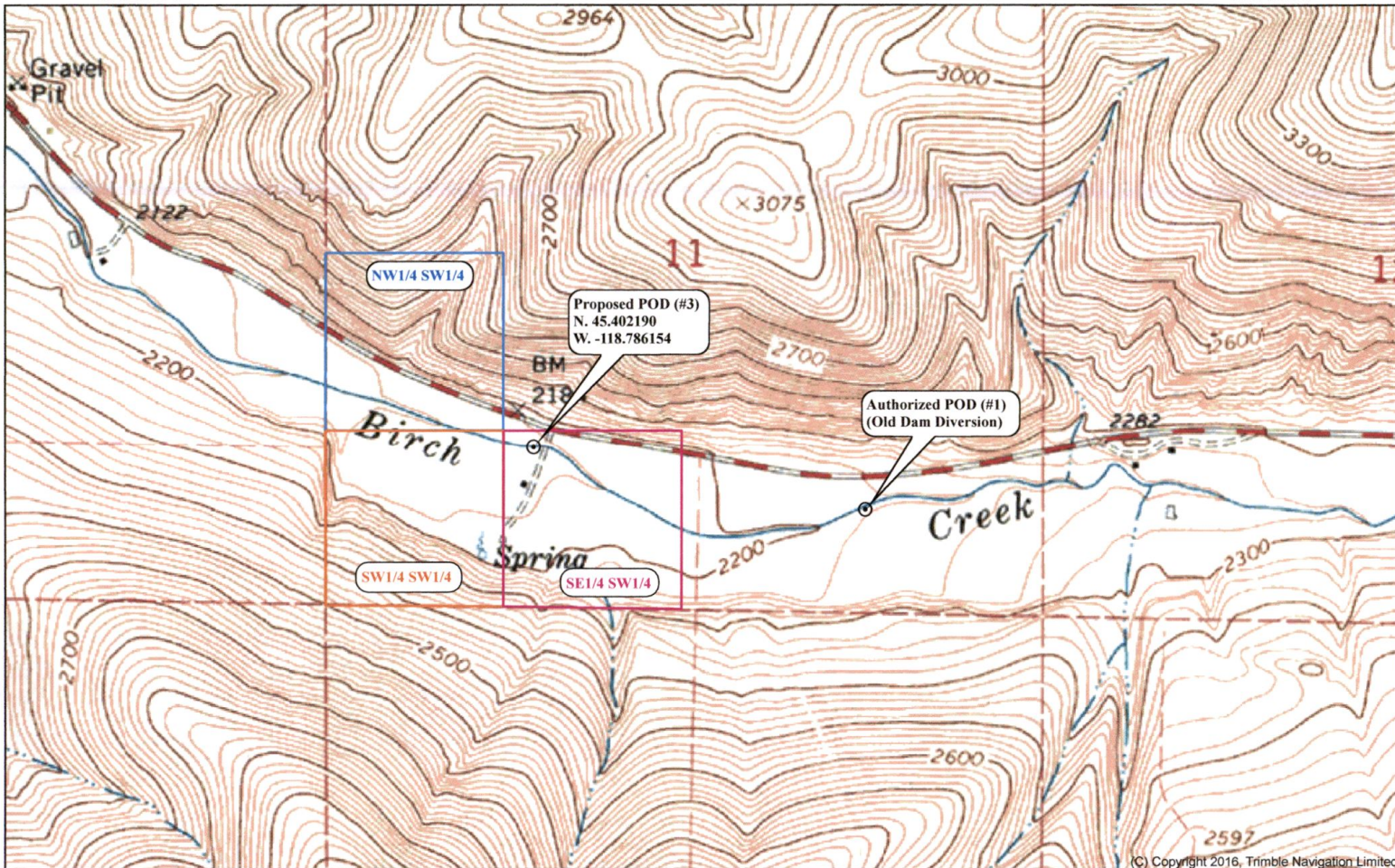
PILOT ROCK QUADRANGLE

OREGON

TOPOGRAPHIC SERIES

(TABLE ROCK)

118° 45' 39.1642" W  
45° 24' 40.5106" N



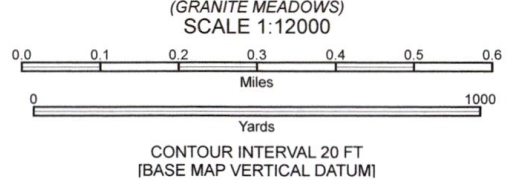
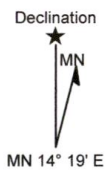
045° 23' 36.9820" N  
118° 48' 04.7945" W

Printed: Mon Apr 15, 2019  
118° 45' 39.1642" W  
45° 24' 40.5106" N

(C) Copyright 2016, Trimble Navigation Limited

(TAMARACK GULCH)

WRS  
Water Right Solutions  
OVRD  
JUL 2 2019  
RECEIVED



PILOT ROCK, OR  
DEC 31, 1969

(COOMBS CANYON)

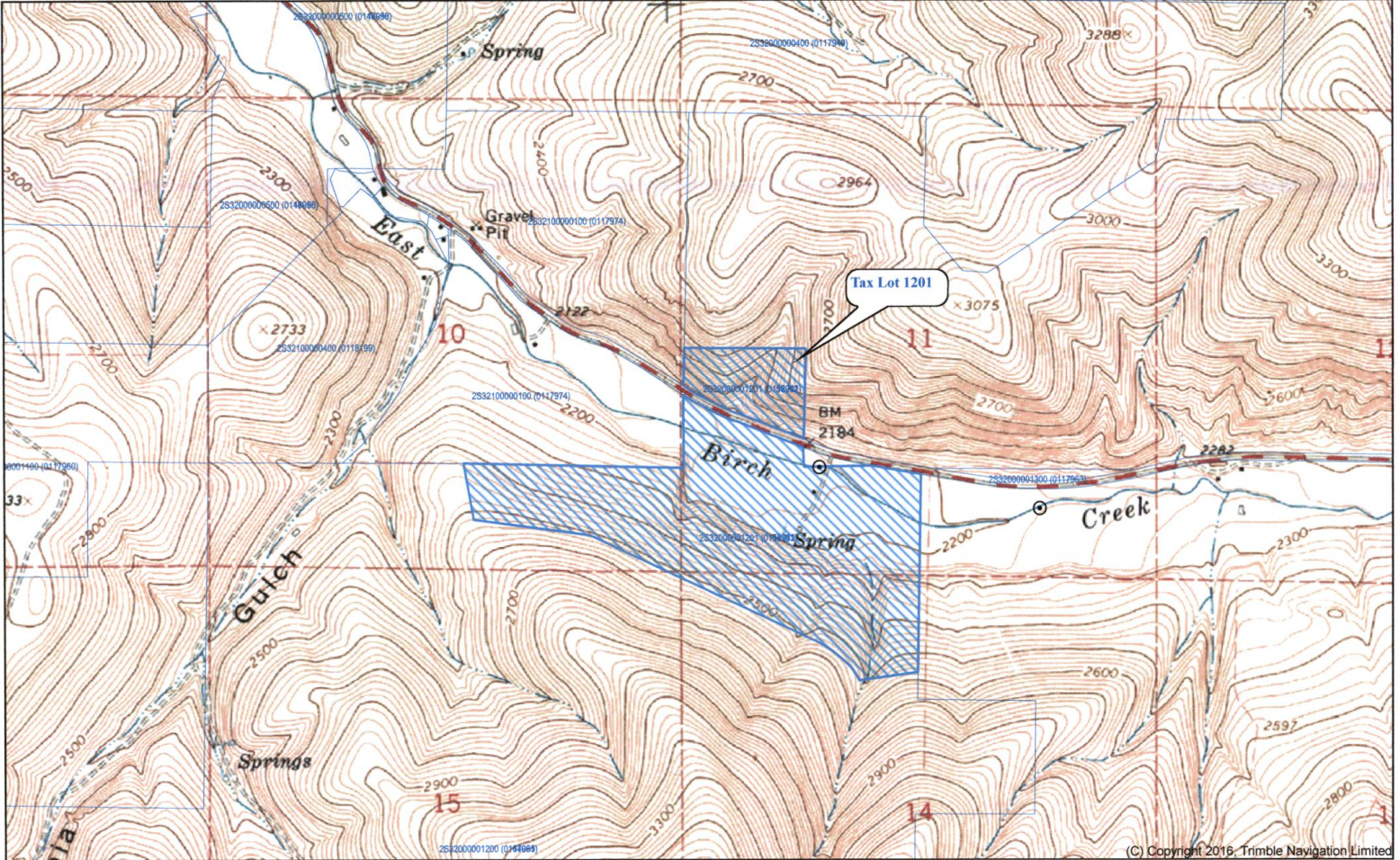
# John Standley Property: Tax Lot 1201 (Sec. 10, 11, 14 & 15, T. 2 S., R. 32 E.W.M.)

PILOT ROCK QUADRANGLE  
OREGON  
TOPOGRAPHIC SERIES (TABLE ROCK)

(MC KAY RESERVOIR)

118° 49' 17.6072" W  
045° 24' 59.7461" N

118° 45' 39.1581" W  
+ 045° 24' 59.7461" N



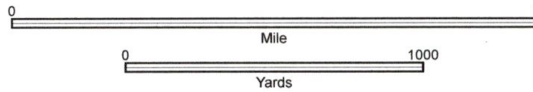
045° 23' 24.4531" N  
118° 49' 17.6072" W

Printed: Mon Apr 15, 2019  
118° 45' 39.1581" W  
+ 045° 23' 24.4531" N

(C) Copyright 2016, Trimble Navigation Limited

(GRANITE MEADOWS)  
SCALE 1:18000

(TAMARACK GULCH)



CONTOUR INTERVAL 20 FT  
(BASE MAP VERTICAL DATUM)

PILOT ROCK, OR  
DEC 31, 1969

This map was prepared for Assessment & Taxation purposes only and has NOT been prepared for legal, engineering or surveying purposes.

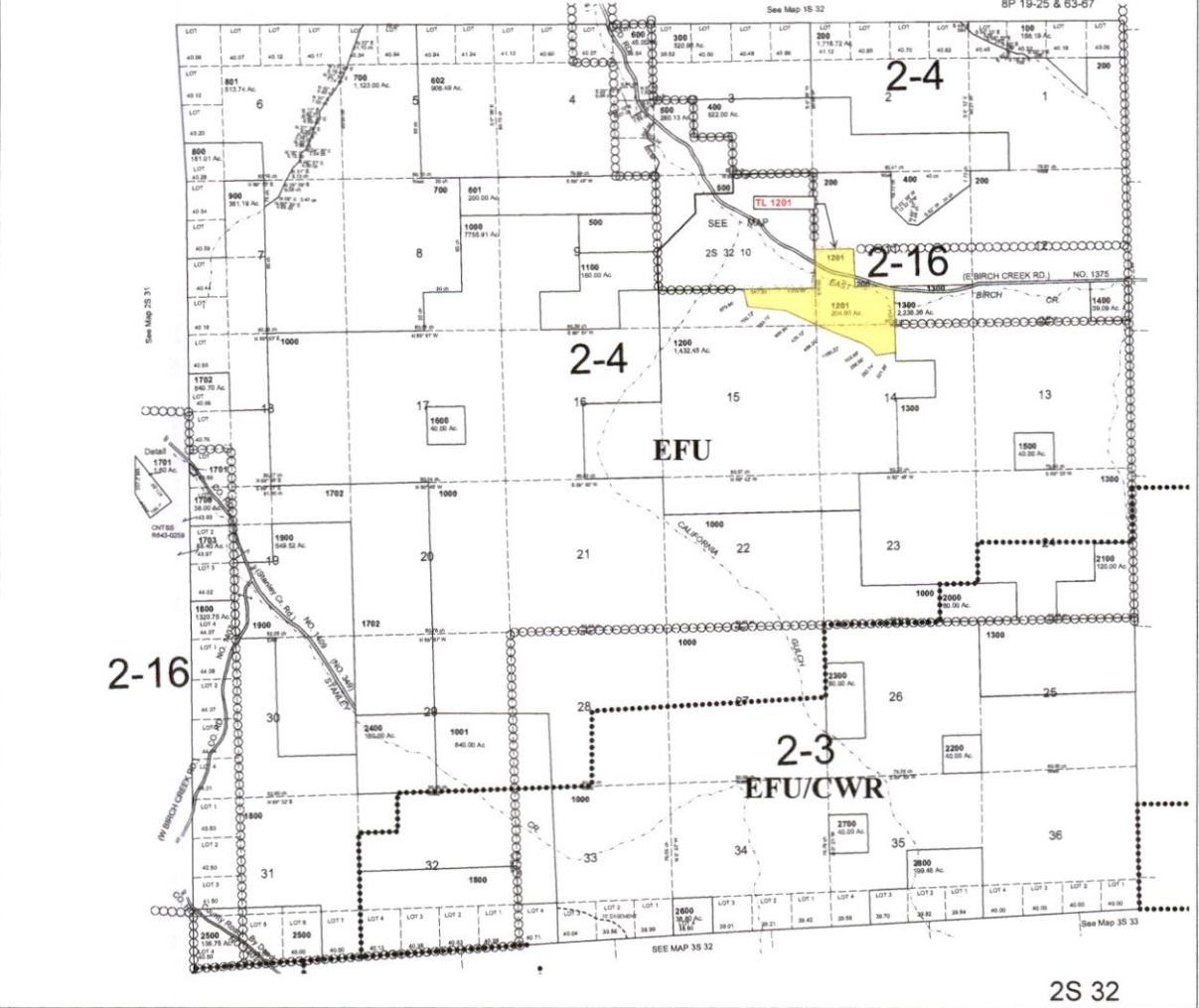
# T2S R32E WM UMATILLA COUNTY

SCALE 1"=2000'

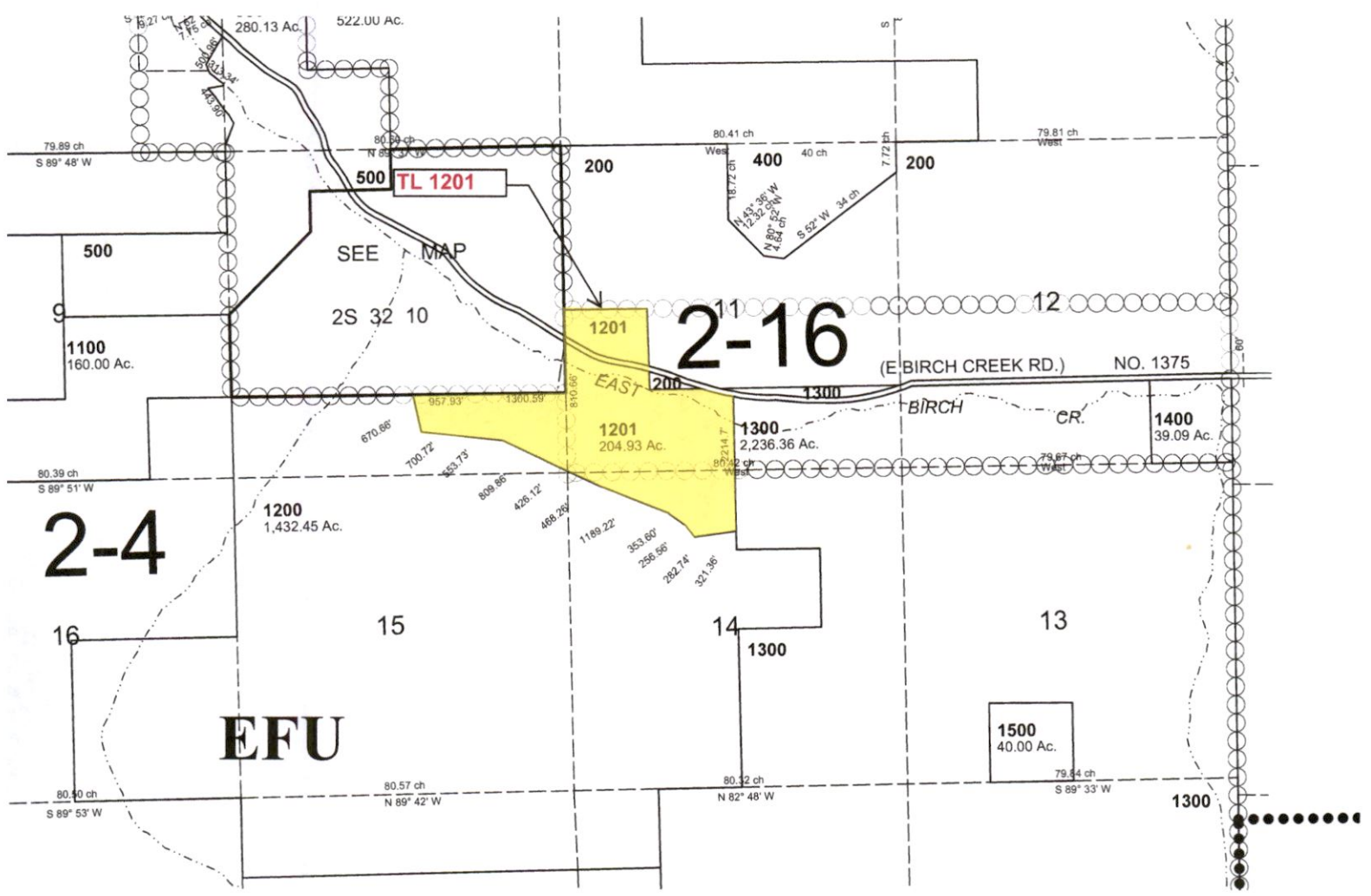
5/1/07

2S 32

AERIAL PHOTO NO. 7P 147-153  
BP 19-25 & 63-67



RECEIVED  
JUL 22 2019  
OWRD



RECEIVED  
 JUL 22 2019  
 OWRD

(PILOT ROCK NW, OR)

### Cert. 2488: Authorized Place of Use/Irrigated Lands

118° 48' 07.7799" W  
045° 24' 51.2067" N

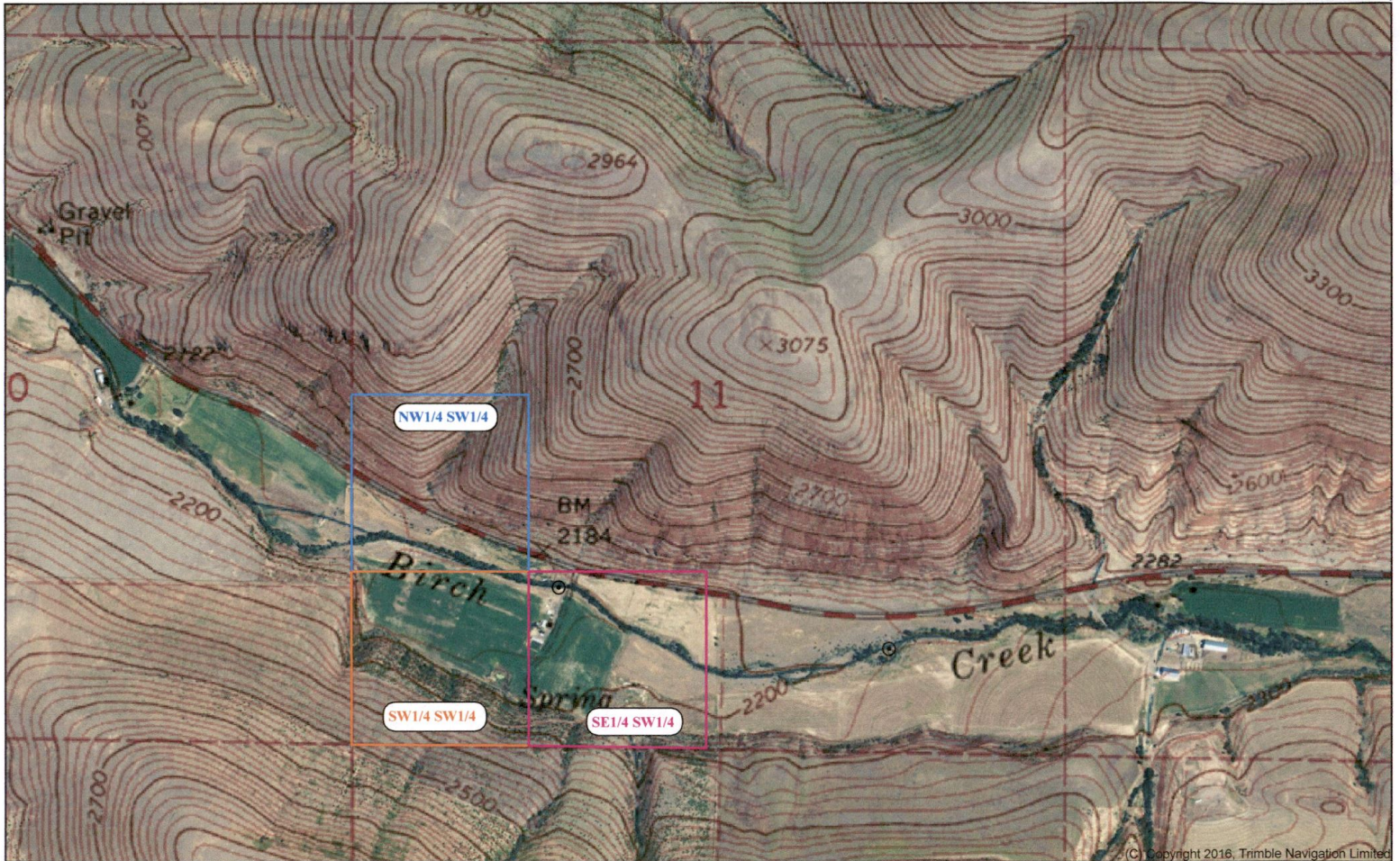
(PILOT ROCK NE, OR)

PILOT ROCK SE, OR QUADRANGLE  
OREGON

AERIAL PHOTO SERIES

(SEVENMILE CREEK NW, OR)

118° 45' 42.1419" W  
045° 24' 51.2067" N

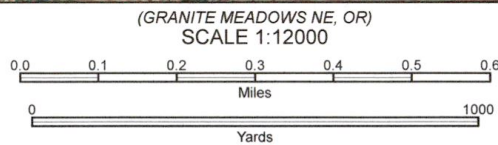


045° 23' 47.6781" N  
118° 48' 07.7799" W

Printed: Mon Apr 15, 2019  
045° 23' 47.6781" N  
118° 45' 42.1419" W

  
 Water Right Solutions  
 OWRD  
 JUL 2 2019  
 RECEIVED

Declination  
  
 MN 14° 19' E



CONTOUR INTERVAL UNKNOWN FT  
(BASE MAP VERTICAL DATUM)

(TAMARACK GULCH NW, OR)  
 PILOT ROCK SE, OR, OR  
 JUL 1, 2016

RECEIVED

JUL 22 2019

OWRD

2.5

# Range 32 E. W.M.

