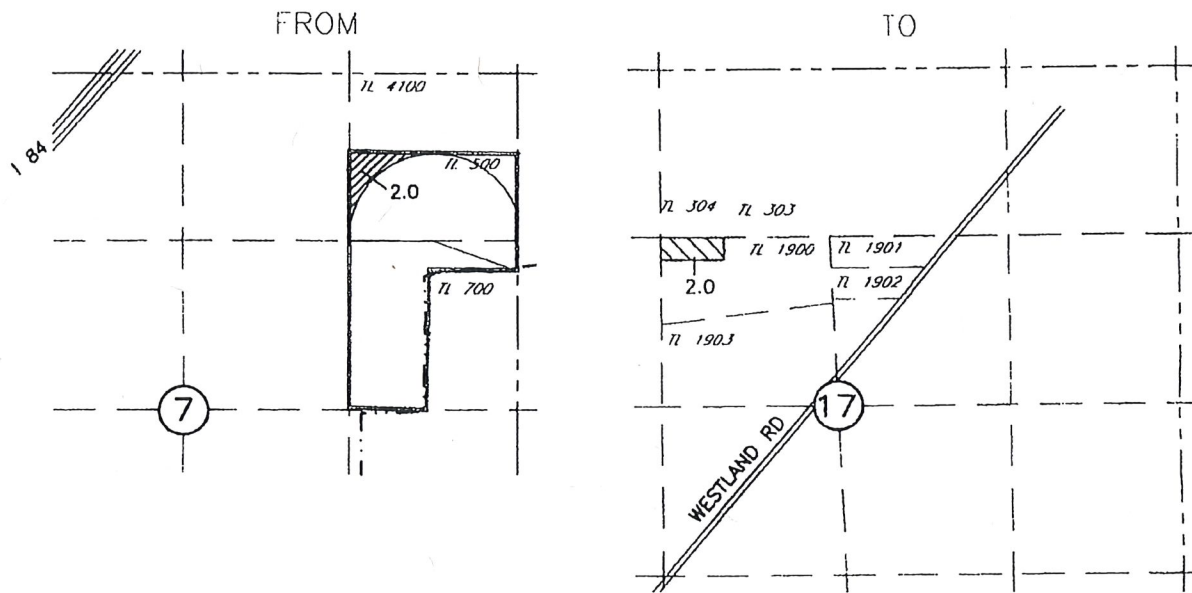
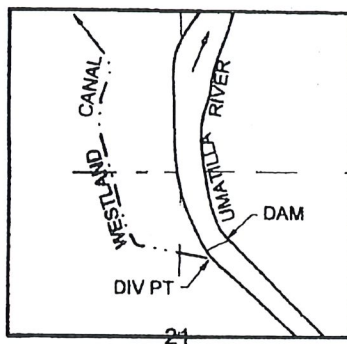


WESTLAND IRRIGATION DISTRICT  
 CLAIM OF BENEFICIAL USE MAP  
 REUTER TO ROYER  
 PORTIONS OF CERTIFICATES 76717 & 79439  
 T4N R28E W.M.  
 UMATILLA COUNTY

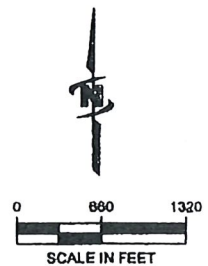


T.3N., R.29E., W.M.



DIV PT LCT N.76°45'56"E. 2913.19' FROM  
 W.1/4 COR. SEC 21

Received by OWRD  
 JUL 09 2019  
 Salem, OR



NOTE:  
 THE PURPOSE OF THIS MAP IS TO IDENTIFY THE APPROXIMATE LOCATION OF THE WATER  
 RIGHT. IT IS NOT INTENDED TO PROVIDE INFORMATION RELATIVE TO THE LOCATION OF  
 PROPERTY OWNERSHIP BOUNDARY LINES.

DRAWING: \\Kerkfiles\public\Project\30-08-018 - Partly Water Rights Consulting\--00 Misc Engineering\Cod\WESTLANO\30-08-016 ROYER.dwg  
 PRINTED BY: rwillard on 05/02/17 08:05 AM

**(JUB)**  
 J-U-B ENGINEERS, INC.