

THIS MAP IS FOR ASSESSMENT AND TAXATION PURPOSES ONLY

SEC. 7 T.9S. R.5W. W.M.
Polk County
1" = 400'

9.5.7

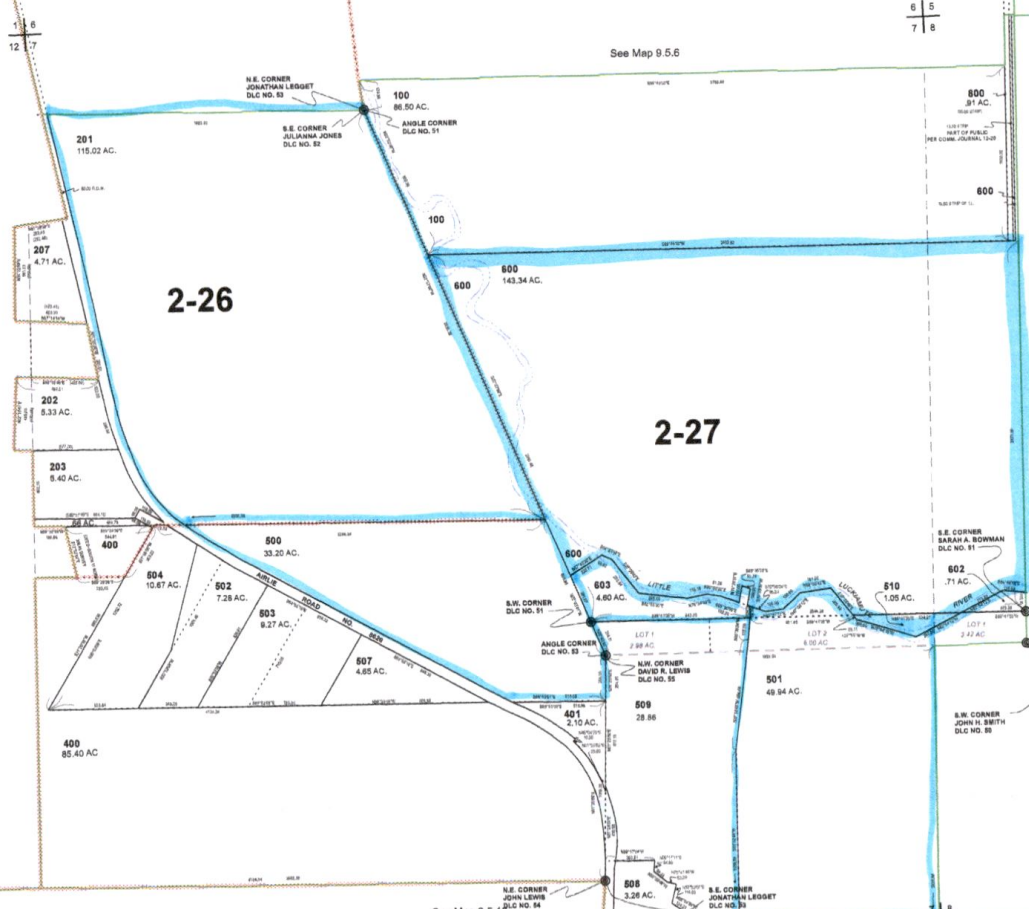
6 | 5
7 | 8

See Map 9.5.6

Canceled No.

- 200
- 205
- 206
- 208
- 300
- 505
- 508
- 601
- 700

RECEIVED
AUG 27 2019
OWRD



2-26

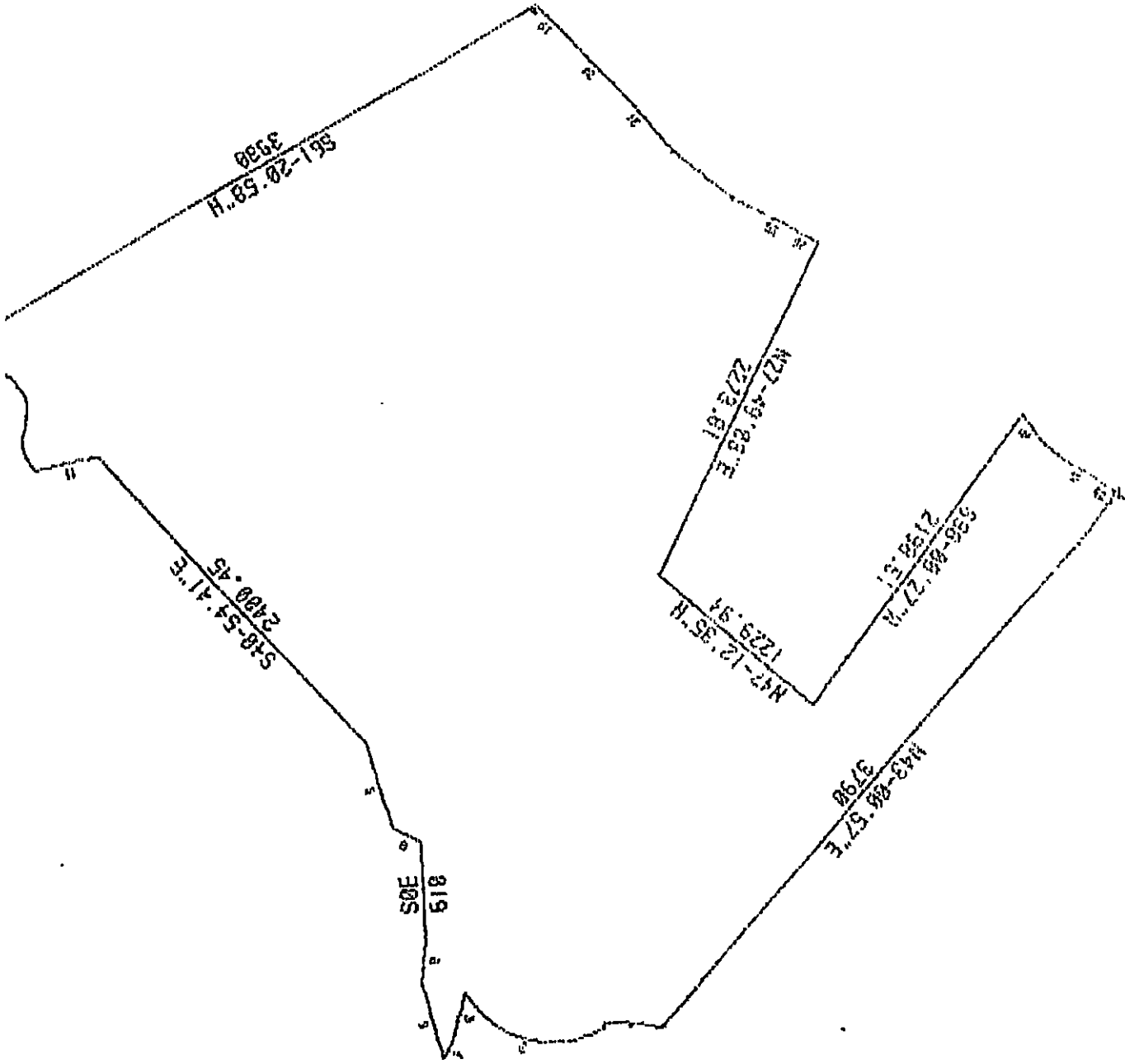
2-27

See Map 9.5.8

N.E. COR
DAVID R.
DLC NO. 91

9.5.7

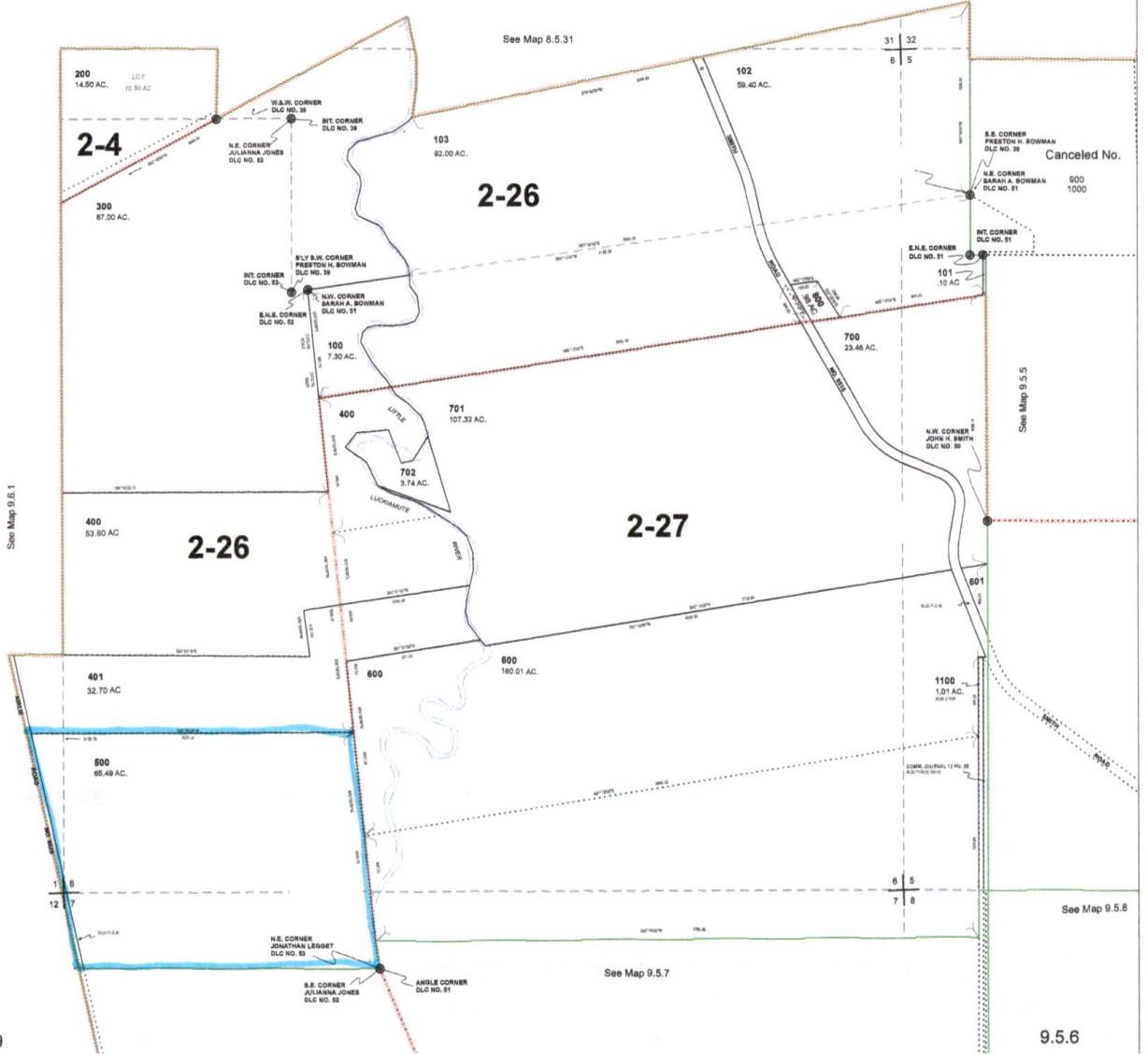
13243



THIS MAP IS FOR ASSESSMENT AND TAXATION PURPOSES ONLY

SEC. 6 T.9S. R.5W. W.M.
Polk County
1" = 400'

9.5.6



2/13/2019

9.5.6

RECEIVED

AUG 27 2019

AW/DN

13243