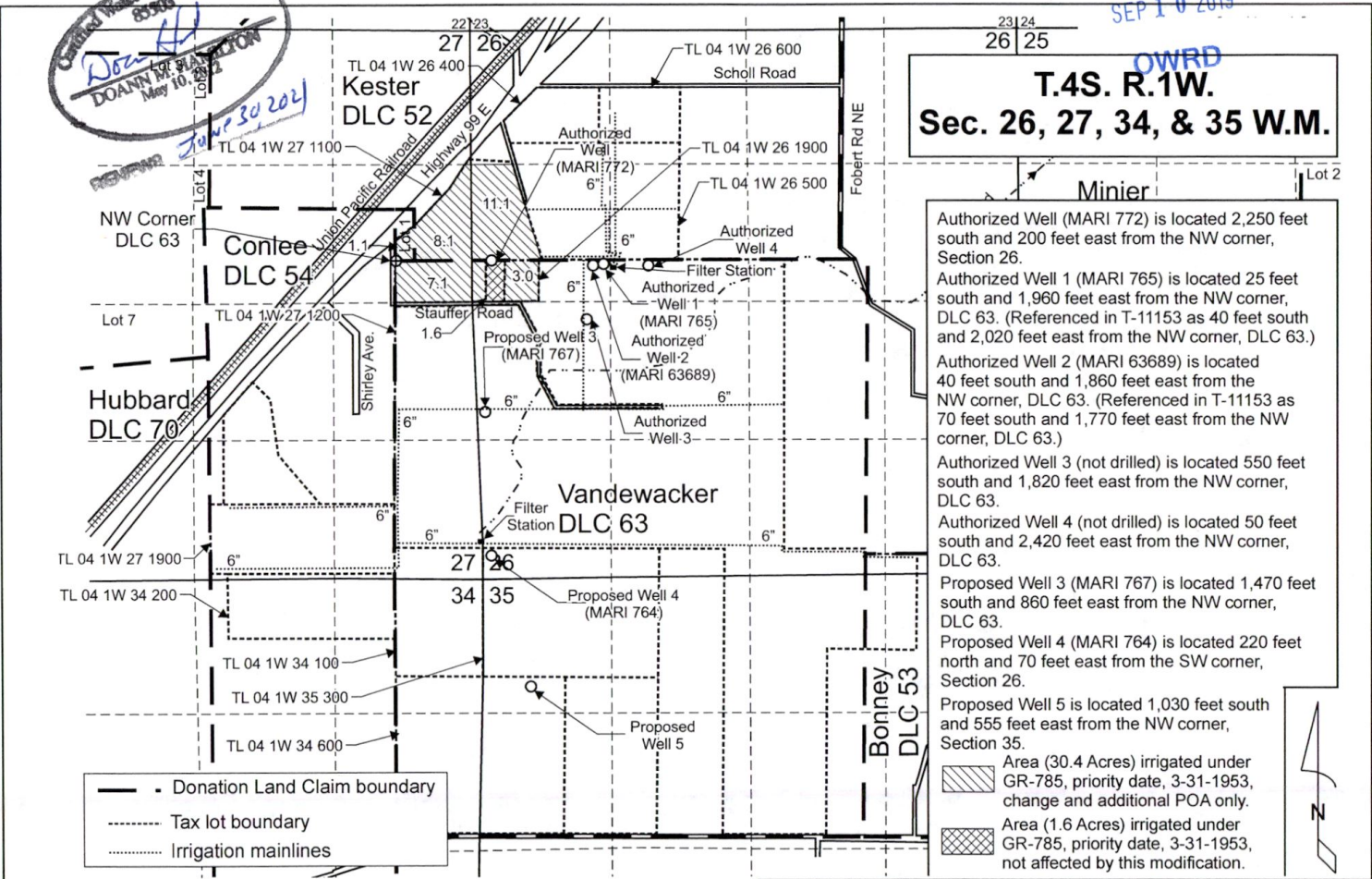




RECEIVED  
SEP 10 2019

OWRD

**T.4S. R.1W.  
Sec. 26, 27, 34, & 35 W.M.**



**Minier**

Authorized Well (MARI 772) is located 2,250 feet south and 200 feet east from the NW corner, Section 26.

Authorized Well 1 (MARI 765) is located 25 feet south and 1,960 feet east from the NW corner, DLC 63. (Referenced in T-11153 as 40 feet south and 2,020 feet east from the NW corner, DLC 63.)

Authorized Well 2 (MARI 63689) is located 40 feet south and 1,860 feet east from the NW corner, DLC 63. (Referenced in T-11153 as 70 feet south and 1,770 feet east from the NW corner, DLC 63.)

Authorized Well 3 (not drilled) is located 550 feet south and 1,820 feet east from the NW corner, DLC 63.

Authorized Well 4 (not drilled) is located 50 feet south and 2,420 feet east from the NW corner, DLC 63.

Proposed Well 3 (MARI 767) is located 1,470 feet south and 860 feet east from the NW corner, DLC 63.

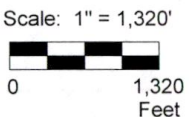
Proposed Well 4 (MARI 764) is located 220 feet north and 70 feet east from the SW corner, Section 26.

Proposed Well 5 is located 1,030 feet south and 555 feet east from the NW corner, Section 35.

Area (30.4 Acres) irrigated under GR-785, priority date, 3-31-1953, change and additional POA only.

Area (1.6 Acres) irrigated under GR-785, priority date, 3-31-1953, not affected by this modification.

— Donation Land Claim boundary  
 - - - Tax lot boundary  
 ..... Irrigation mainlines



This map was prepared for the purpose of identifying the location of a water right only and is not intended to provide legal dimensions or location of property ownership lines.

**Groundwater Registration Modification Application Map  
GR-785 / T-11153**

Pacific Hydro-Geology Inc.

09/2019

Stauffer Farms Inc.  
T.4S. R.1W. Sec. 26, 27, 34 & 35, W.M.

StaufferTransMap.cdr