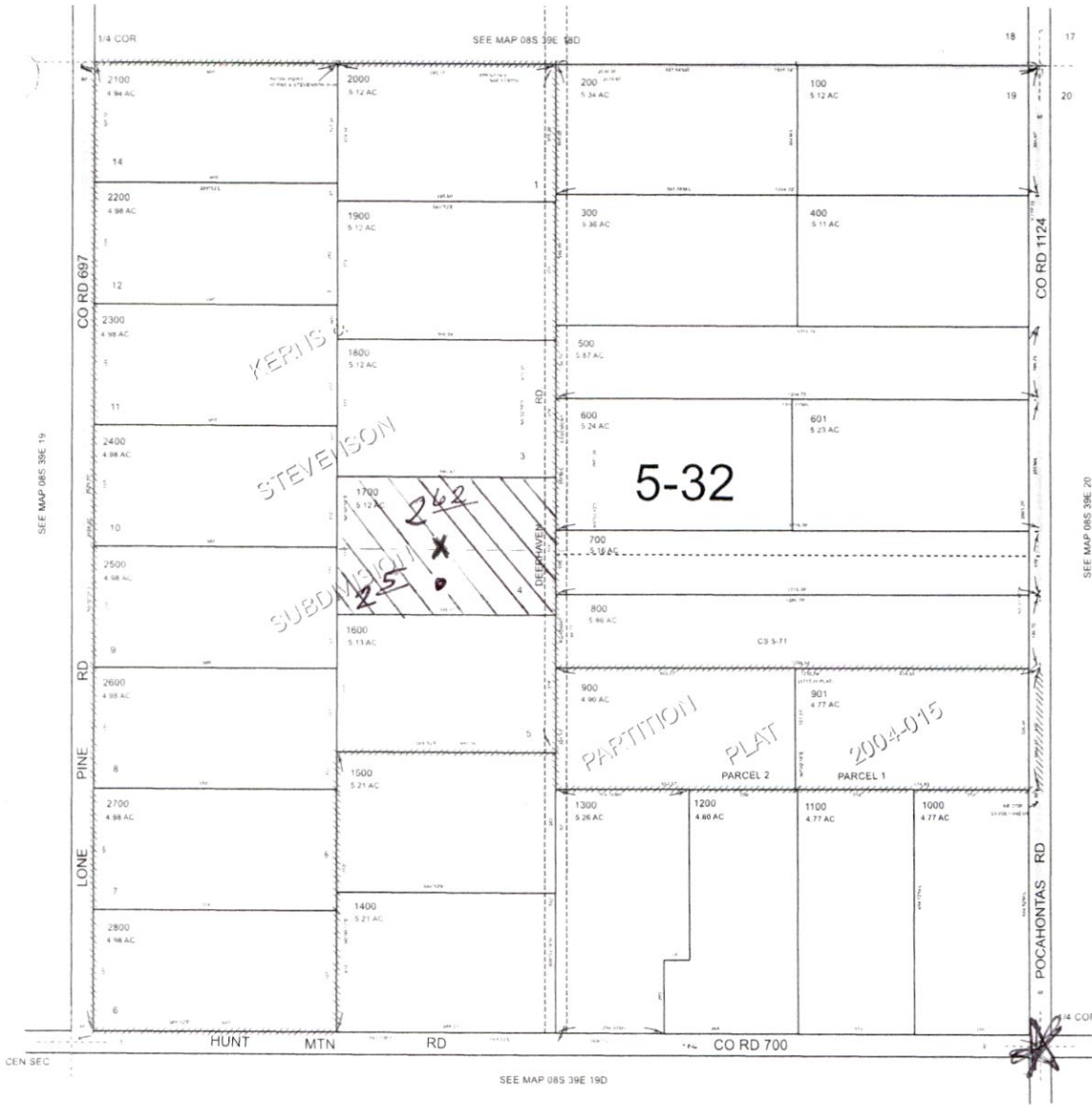


Scale is off
OK/PK

N.E. 1/4 SEC. 19 T.8S. R.39E. W.M.
BAKER COUNTY
1" = 200'

08S39E19A



RECEIVED
DEC 16 2019
OWRD

Revised: DBJ
09/27/2006

08S39E19A

- X PROPOSED POD: 1590' W AND 1340' N FROM THE SE CORN. OF THE NE QTR
- AUTHORIZED POD: 1630' W AND 1440' S FROM THE NE CORN. OF SECT 19.

13318.