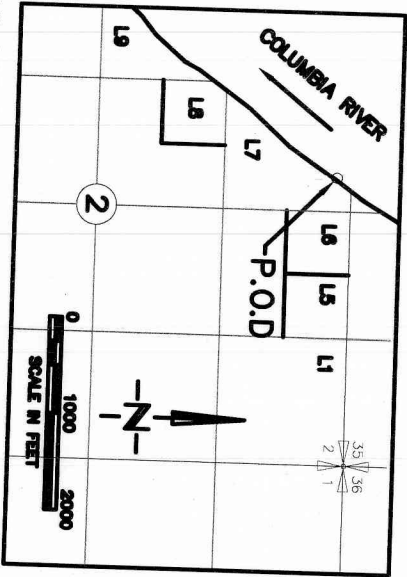
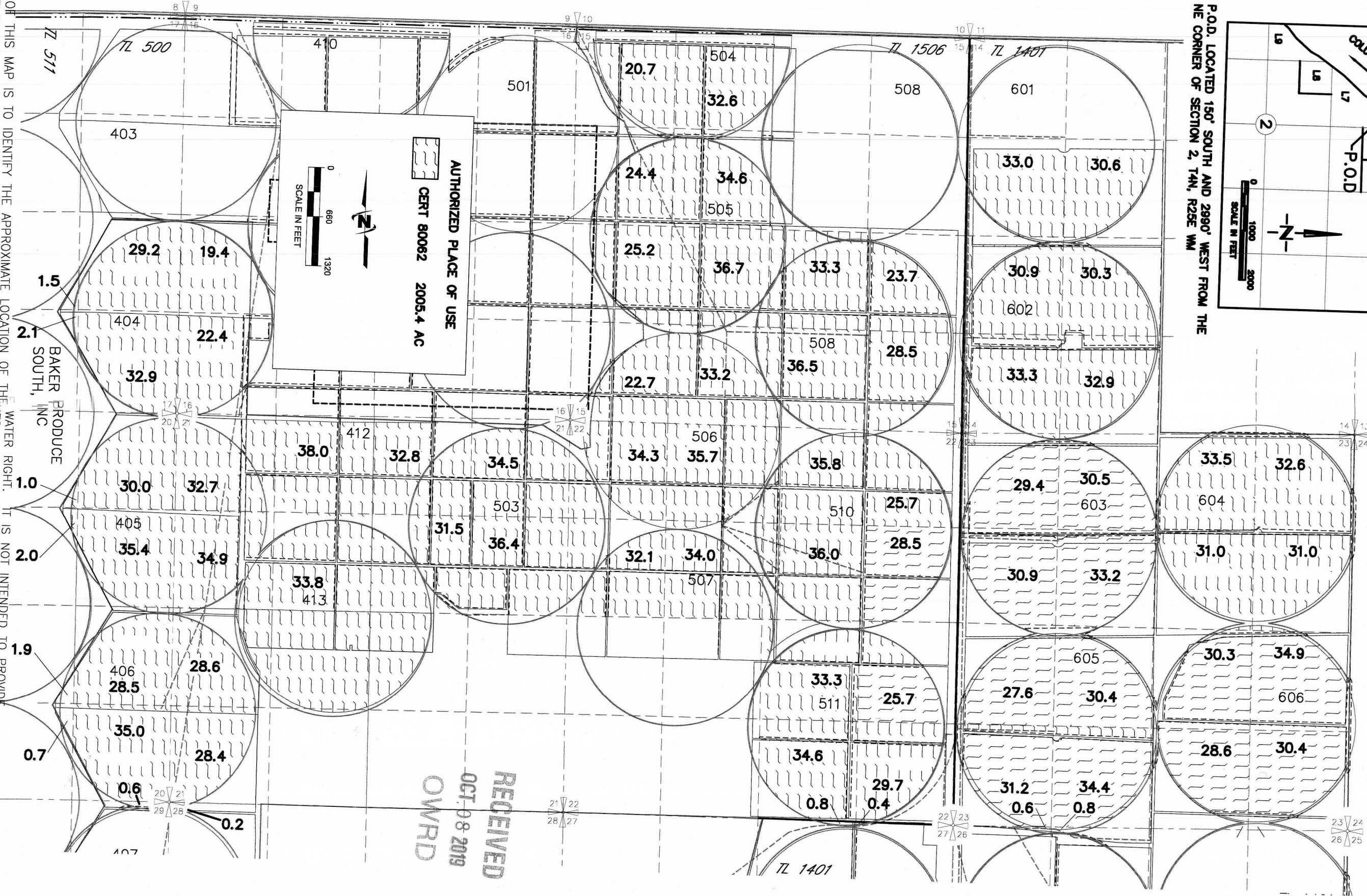


CANYON FARM II, LLC TO CANYON FARM II, LLC
 2019 TRANSFER APPLICATION MAP - CERT 80062
 T3N R26EWM
 FROM



P.O.D. LOCATED 150' SOUTH AND 2990' WEST FROM THE
 NE CORNER OF SECTION 2, T4N, R26E, W1M



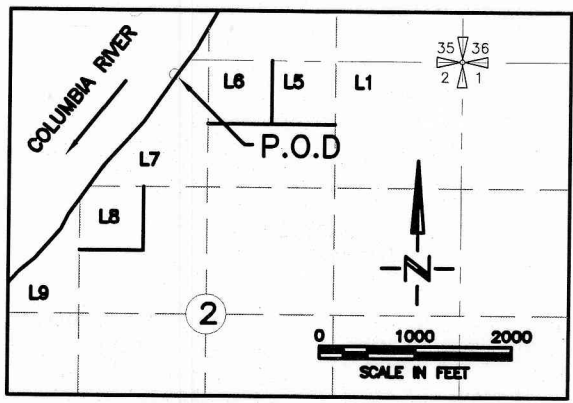
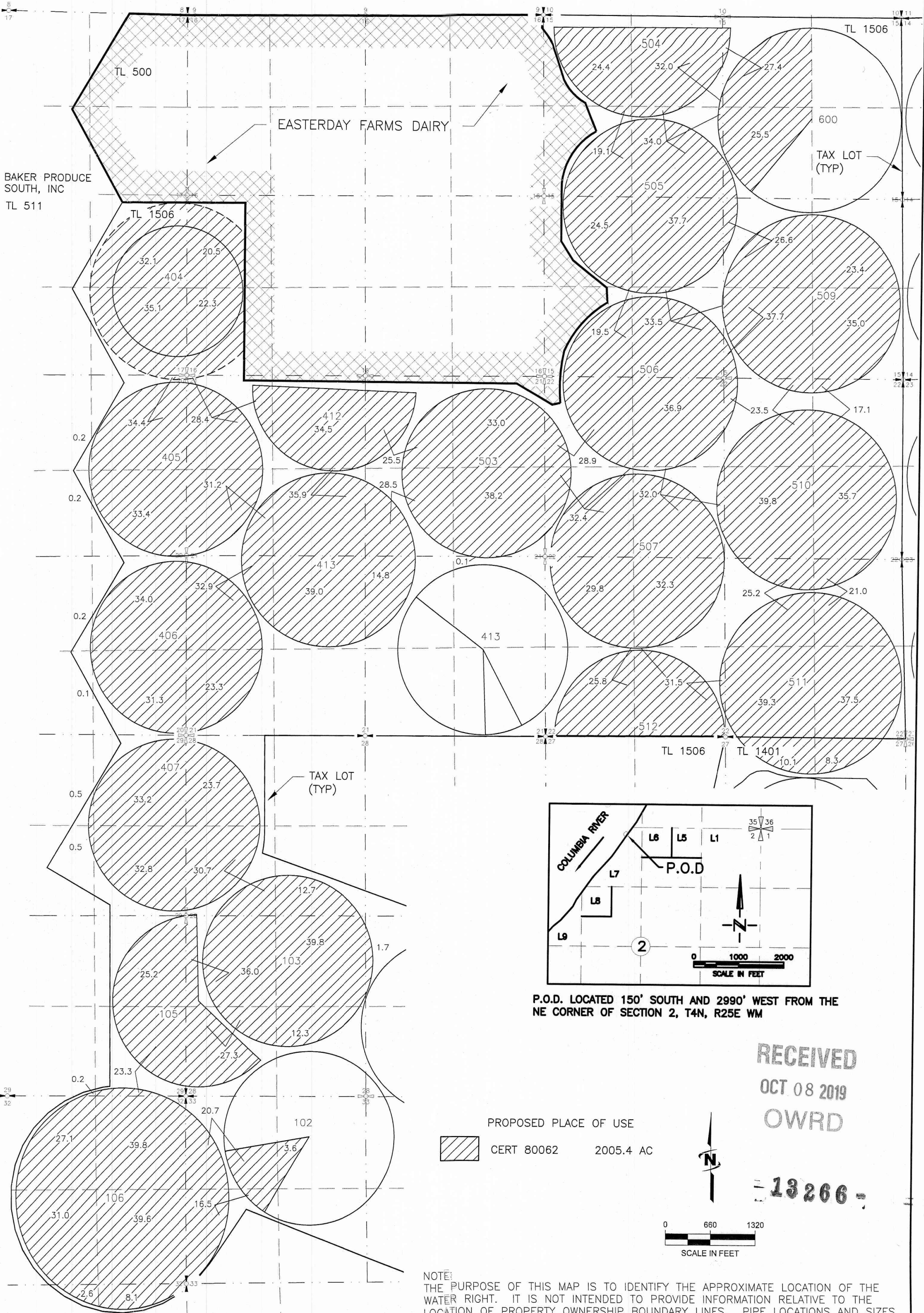
RECEIVED
 OCT 08 2019
 OWRD

NOTE: THE PURPOSE OF THIS MAP IS TO IDENTIFY THE APPROXIMATE LOCATION OF THE WATER RIGHT. IT IS NOT INTENDED TO PROVIDE INFORMATION RELATIVE TO THE LOCATION OF PROPERTY OWNERSHIP BOUNDARY LINES, PIPE LOCATIONS AND SIZES WHERE SHOWN. PROVIDED BY FARM OPERATIONAL PERSONNEL AND ARE APPROXIMATE LOCATIONS. DRAWING: \\KWKFILES\Public\Project\JUB\30-18-073 - Fall Line Lost Valley Farm\CAD\WR\S\WATER RIGHT MAPS\30-08-016 Canyon Farm WR.dwg
 PRINTED BY: willard on 08/15/19 09:49 AM

18266

CANYON FARM II, LLC TO CANYON FARM II, LLC
 2019 TRANSFER APPLICATION MAP – CERT 80062
 T3N R26EWM


TO



P.O.D. LOCATED 150' SOUTH AND 2990' WEST FROM THE NE CORNER OF SECTION 2, T4N, R25E WM

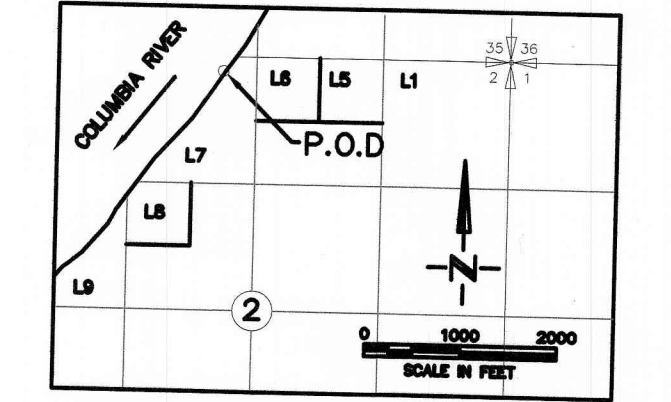
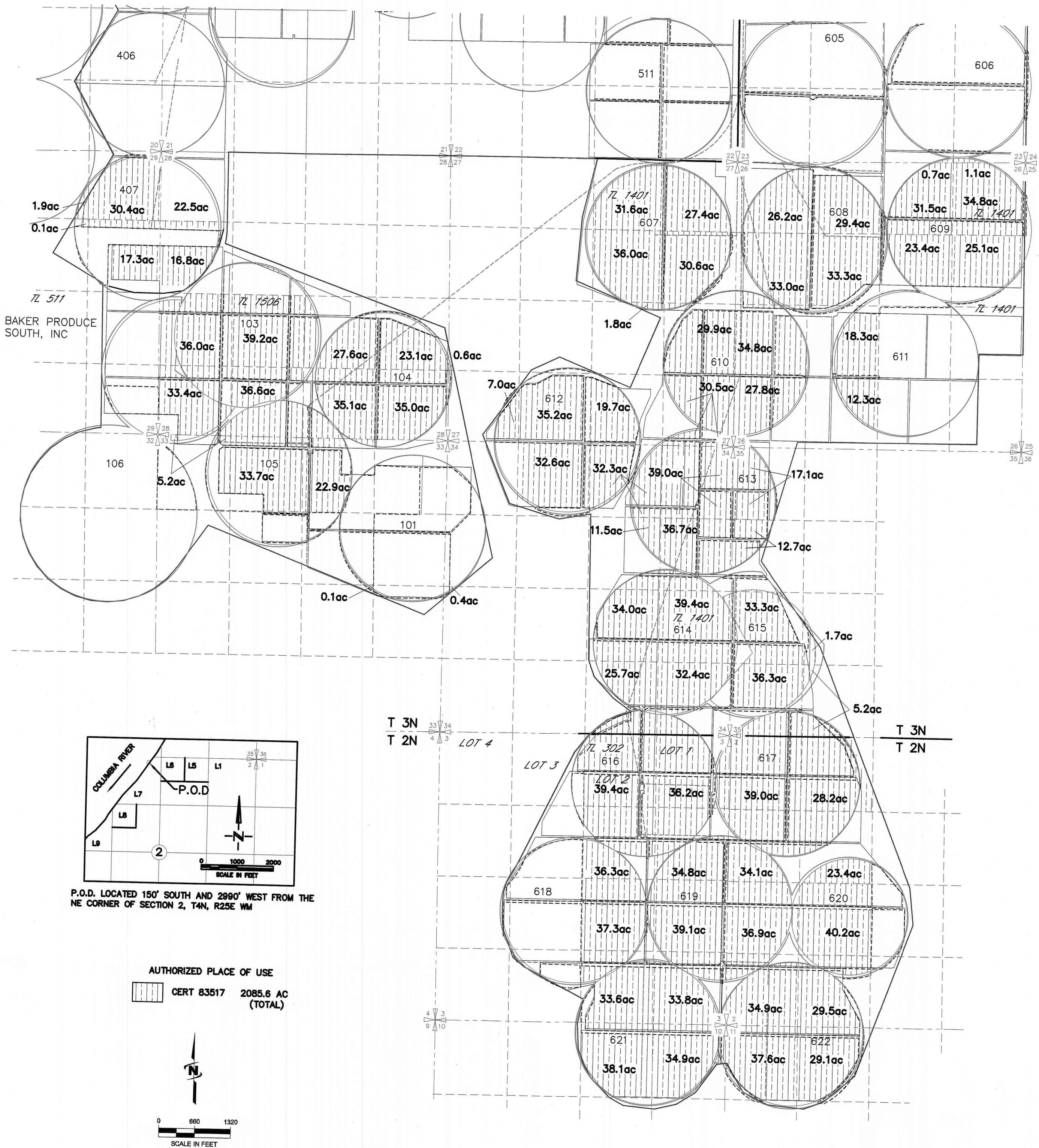
RECEIVED
 OCT 08 2019
 OWRD

13266

PROPOSED PLACE OF USE
 CERT 80062 2005.4 AC

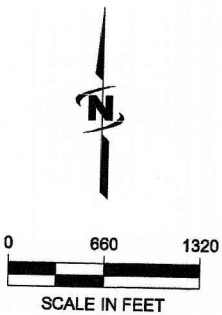
NOTE:
 THE PURPOSE OF THIS MAP IS TO IDENTIFY THE APPROXIMATE LOCATION OF THE WATER RIGHT. IT IS NOT INTENDED TO PROVIDE INFORMATION RELATIVE TO THE LOCATION OF PROPERTY OWNERSHIP BOUNDARY LINES. PIPE LOCATIONS AND SIZES WHERE SHOWN WERE PROVIDED BY FARM OPERATIONAL PERSONNEL AND ARE APPROXIMATE LOCATIONS AND SIZES.

CANYON FARM II, LLC TO CANYON FARM II, LLC
 2019 TRANSFER APPLICATION MAP - CERT 83517
 T2N & T3N R26EWM
 FROM



P.O.D. LOCATED 150' SOUTH AND 2990' WEST FROM THE NE CORNER OF SECTION 2, T4N, R25E WM

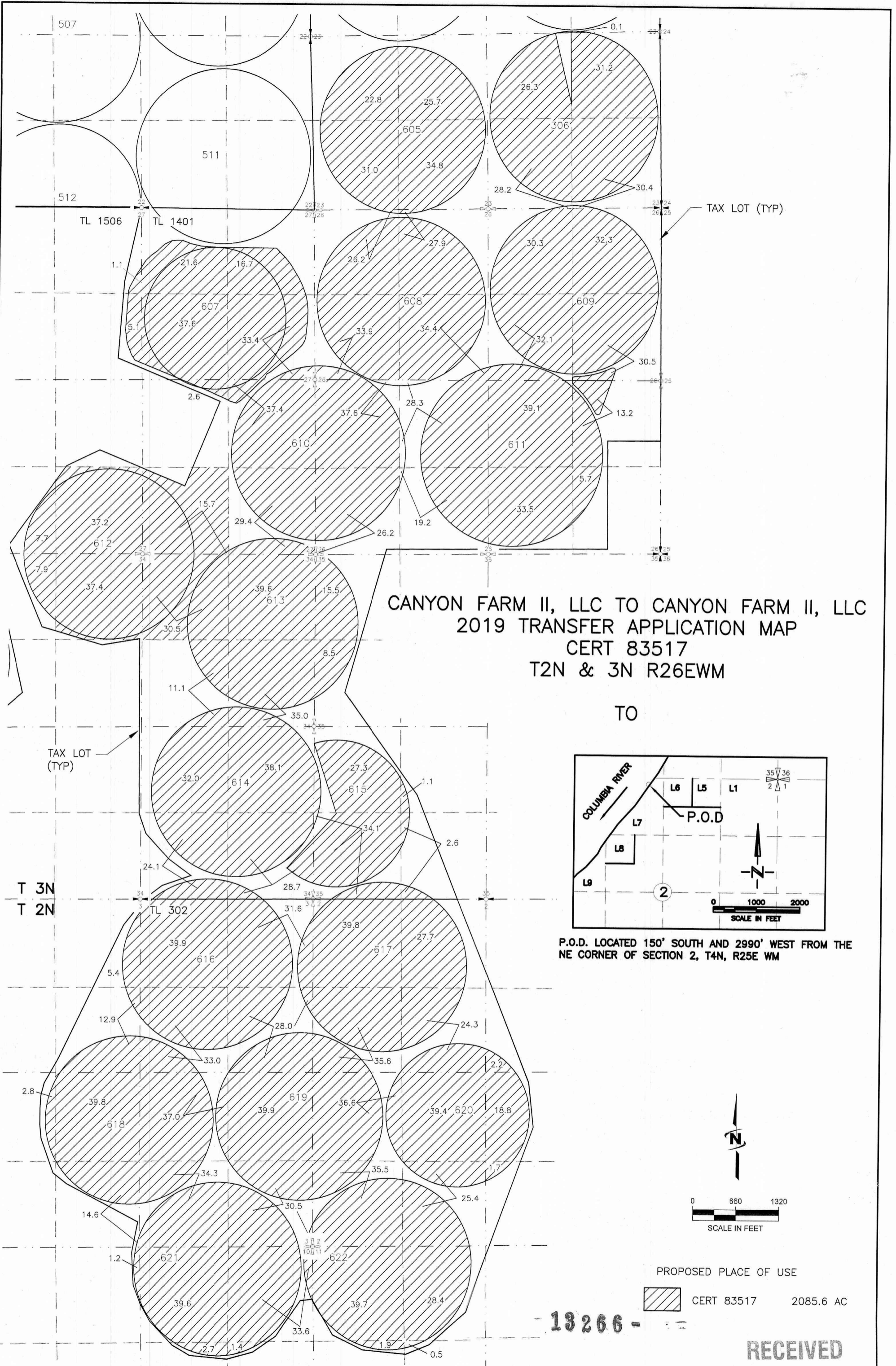
AUTHORIZED PLACE OF USE
 CERT 83517 2085.6 AC (TOTAL)



RECEIVED
 OCT. 08 2019
 OWRD

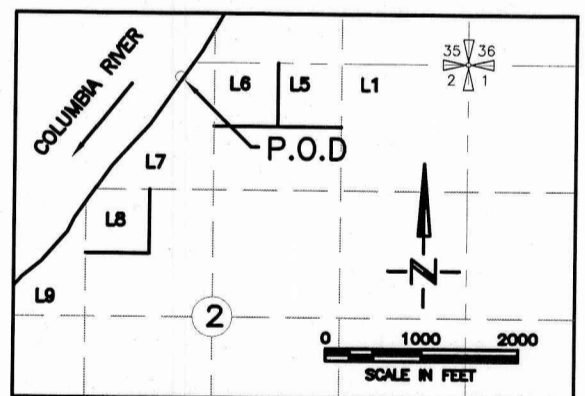
- 18266 -

NOTE: THE PURPOSE OF THIS MAP IS TO IDENTIFY THE APPROXIMATE LOCATION OF THE WATER RIGHT. IT IS NOT INTENDED TO PROVIDE INFORMATIONAL PERSONNEL AND ARE APPROXIMATE PROPERTY OWNERSHIP BOUNDARY LINES. PIPE LOCATIONS AND SIZES WHERE SHOWN WERE PROVIDED BY FARM OPERATION. DRAWING: \\KWKFILES\Public\Project\JUB\30-18-073 - Fall Line Lost Valley Farm\CAD\WR\S\WATER RIGHT MAPS\30-08-016 Canyon Farm WR.dwg PRINTED BY: rwillard on 08/05/19 06:34 AM

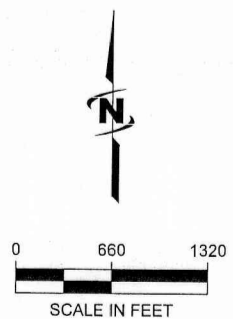


CANYON FARM II, LLC TO CANYON FARM II, LLC
 2019 TRANSFER APPLICATION MAP
 CERT 83517
 T2N & 3N R26EWM

TO



P.O.D. LOCATED 150' SOUTH AND 2990' WEST FROM THE NE CORNER OF SECTION 2, T4N, R25E WM



PROPOSED PLACE OF USE

CERT 83517 2085.6 AC

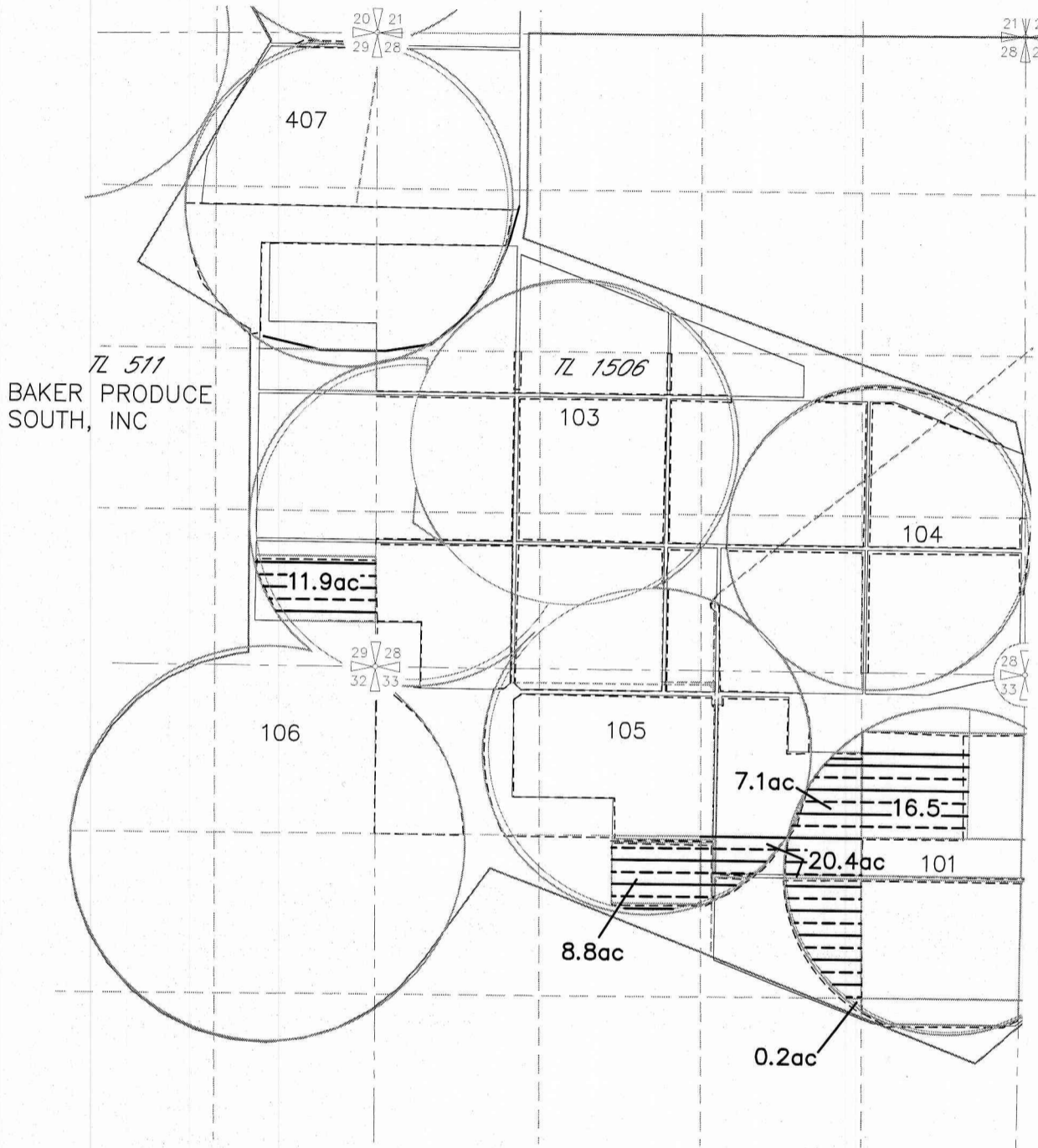
13266 -

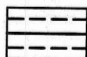
RECEIVED
 OCT 08 2019
 OWRD

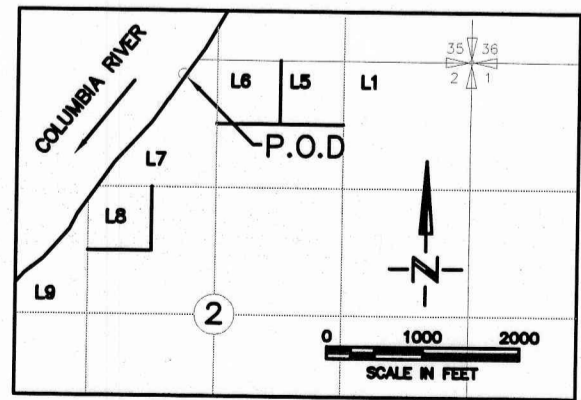
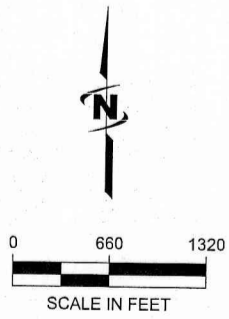
NOTE: THE PURPOSE OF THIS MAP IS TO IDENTIFY THE APPROXIMATE LOCATION OF THE WATER RIGHT. IT IS NOT INTENDED TO PROVIDE PIPE LOCATIONS AND SIZES WHERE SHOWN AND SIZES. INFORMATION RELATIVE TO THE LOCATION OF PROPERTY OWNERSHIP BOUNDARY LINES AND SIZES. WERE PROVIDED BY FARM OPERATIONAL PERSONNEL AND ARE APPROXIMATE LOCATIONS

CANYON FARM II, LLC TO CANYON FARM II, LLC
 2019 TRANSFER APPLICATION MAP - CERT 86856
 T3N R26EWM

FROM



AUTHORIZED PLACE OF USE
 CERT 86856 64.9 AC



P.O.D. LOCATED 150' SOUTH AND 2990' WEST FROM THE NE CORNER OF SECTION 2, T4N, R25E WM

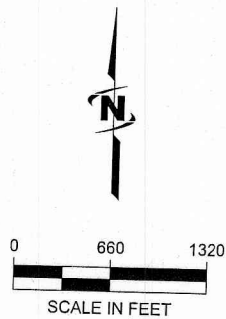
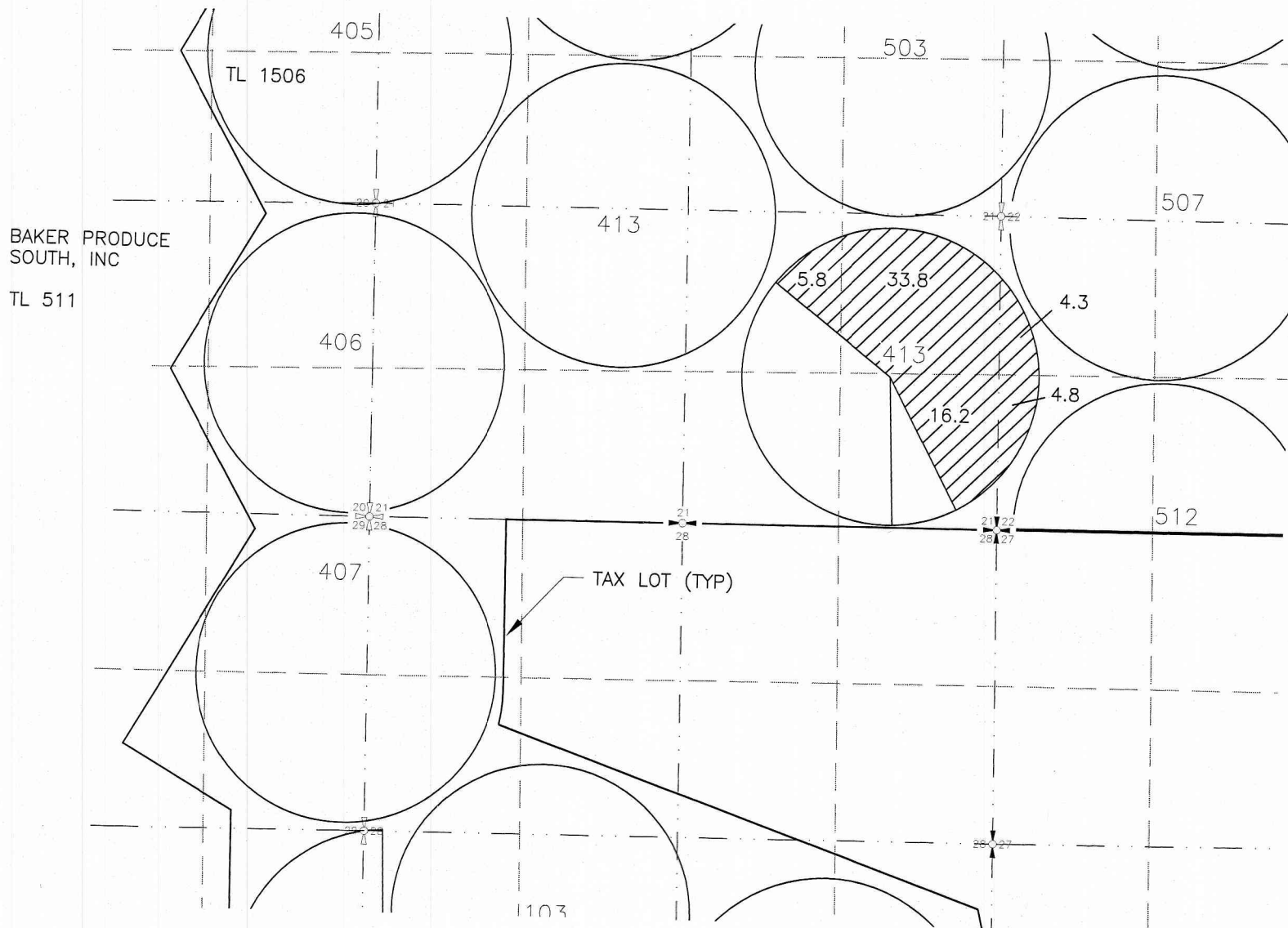
13266 -

RECEIVED
 OCT. 08 2019
 OWRD

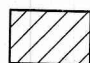
NOTE:
 THE PURPOSE OF THIS MAP IS TO IDENTIFY THE APPROXIMATE LOCATION OF THE WATER RIGHT. IT IS NOT INTENDED TO PROVIDE INFORMATION RELATIVE TO THE LOCATION OF PROPERTY OWNERSHIP BOUNDARY LINES. PIPE LOCATIONS AND SIZES WHERE SHOWN WERE PROVIDED BY FARM OPERATIONAL PERSONNEL AND ARE APPROXIMATE LOCATIONS AND SIZES.

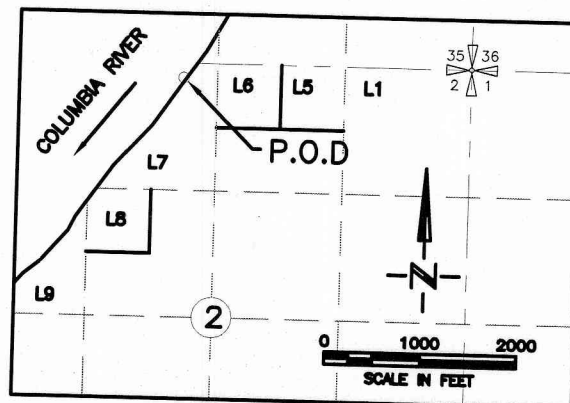
CANYON FARM II, LLC TO CANYON FARM II, LLC
 2019 TRANSFER APPLICATION MAP - CERT
 86856
 T3N R26EWM

TO



PROPOSED PLACE OF USE

 CERT 86856 64.9 AC



P.O.D. LOCATED 150' SOUTH AND 2990' WEST FROM THE NE CORNER OF SECTION 2, T4N, R25E WM

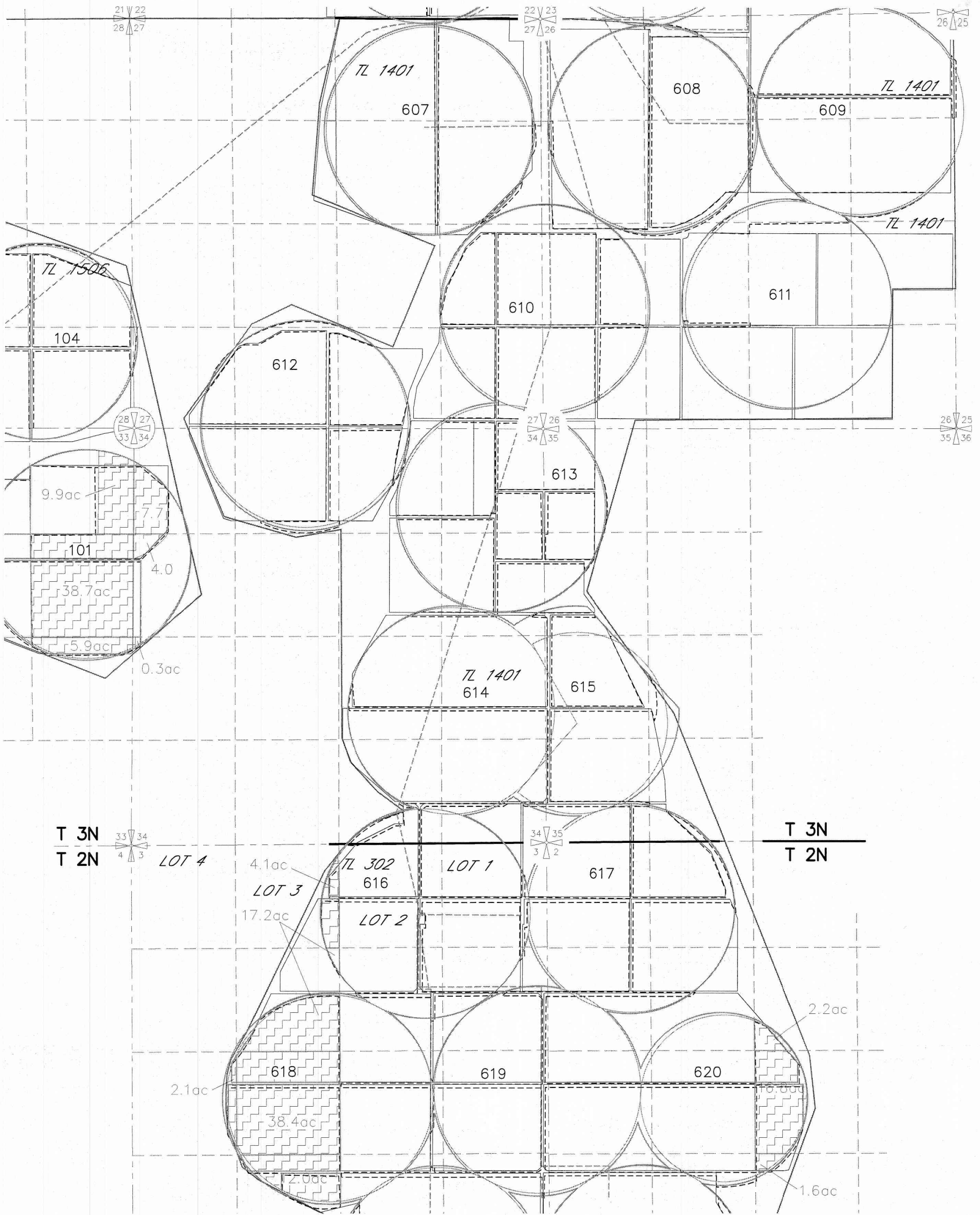
13266 -

RECEIVED
 OCT. 08 2019
 OWRD

NOTE: THE PURPOSE OF THIS MAP IS TO IDENTIFY THE APPROXIMATE LOCATION OF THE WATER RIGHT. IT IS NOT INTENDED TO PROVIDE INFORMATION RELATIVE TO THE LOCATION OF PROPERTY OWNERSHIP BOUNDARY LINES. PIPE LOCATIONS AND SIZES WHERE SHOWN WERE PROVIDED BY FARM OPERATIONAL PERSONNEL AND ARE APPROXIMATE LOCATIONS AND SIZES.

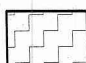
**CANYON FARM II, LLC TO CANYON FARM II, LLC
2019 TRANSFER APPLICATION MAP – CERT 86857
T2N & T3N R26EWM**

FROM

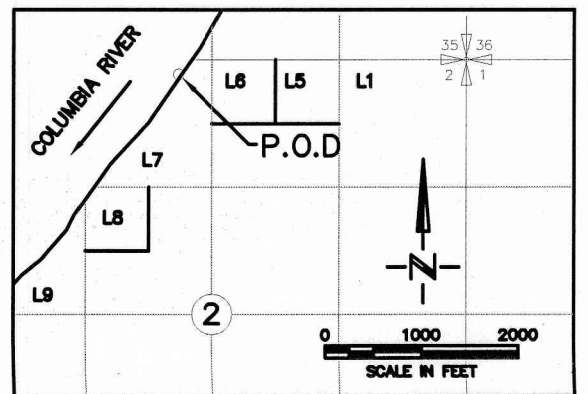
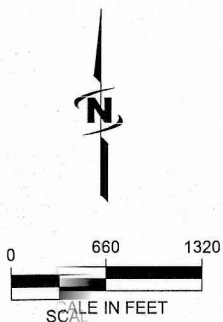


RECEIVED
OCT. 08 2019
OWRD

AUTHORIZED PLACE OF USE

 CERT 86857 160.9 AC

13266 -

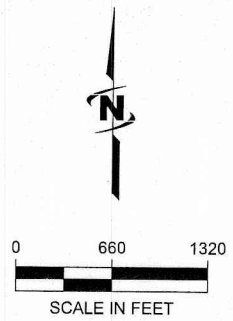
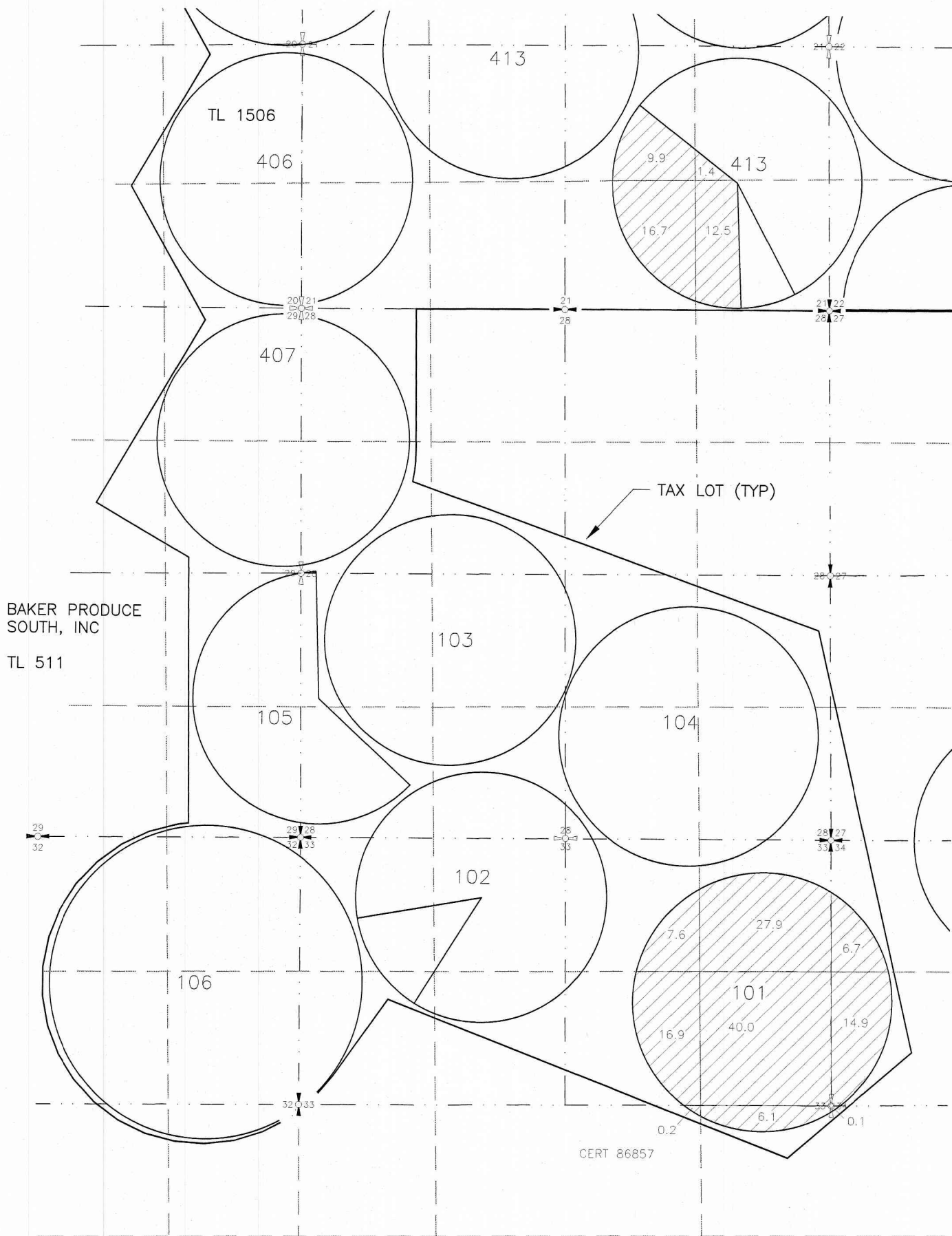


P.O.D. LOCATED 150' SOUTH AND 2990' WEST FROM THE NE CORNER OF SECTION 2, T4N, R25E WM

NOTE: THE PURPOSE OF THIS MAP IS TO IDENTIFY THE APPROXIMATE LOCATION OF THE WATER RIGHT. IT IS NOT INTENDED TO PROVIDE INFORMATION RELATIVE TO THE LOCATION OF PROPERTY OWNERSHIP BOUNDARY LINES. PIPE LOCATIONS AND SIZES WHERE SHOWN WERE PROVIDED BY FARM OPERATIONAL PERSONNEL AND ARE APPROXIMATE LOCATIONS AND SIZES.

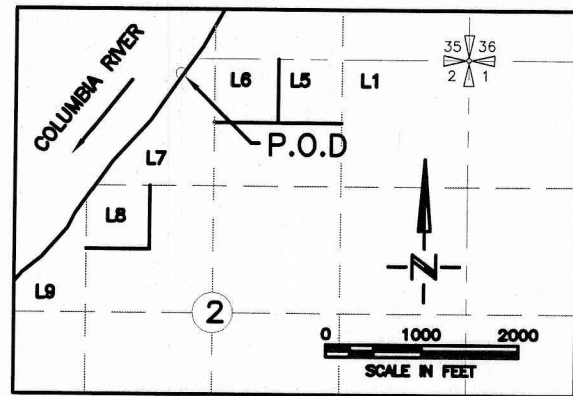
CANYON FARM II, LLC TO CANYON FARM II, LLC
 2019 TRANSFER APPLICATION MAP
 CERT 86857
 T3N R26EWM

TO



PROPOSED PLACE OF USE

 CERT 86857 160.9 AC



P.O.D. LOCATED 150' SOUTH AND 2990' WEST FROM THE NE CORNER OF SECTION 2, T4N, R25E WM

RECEIVED

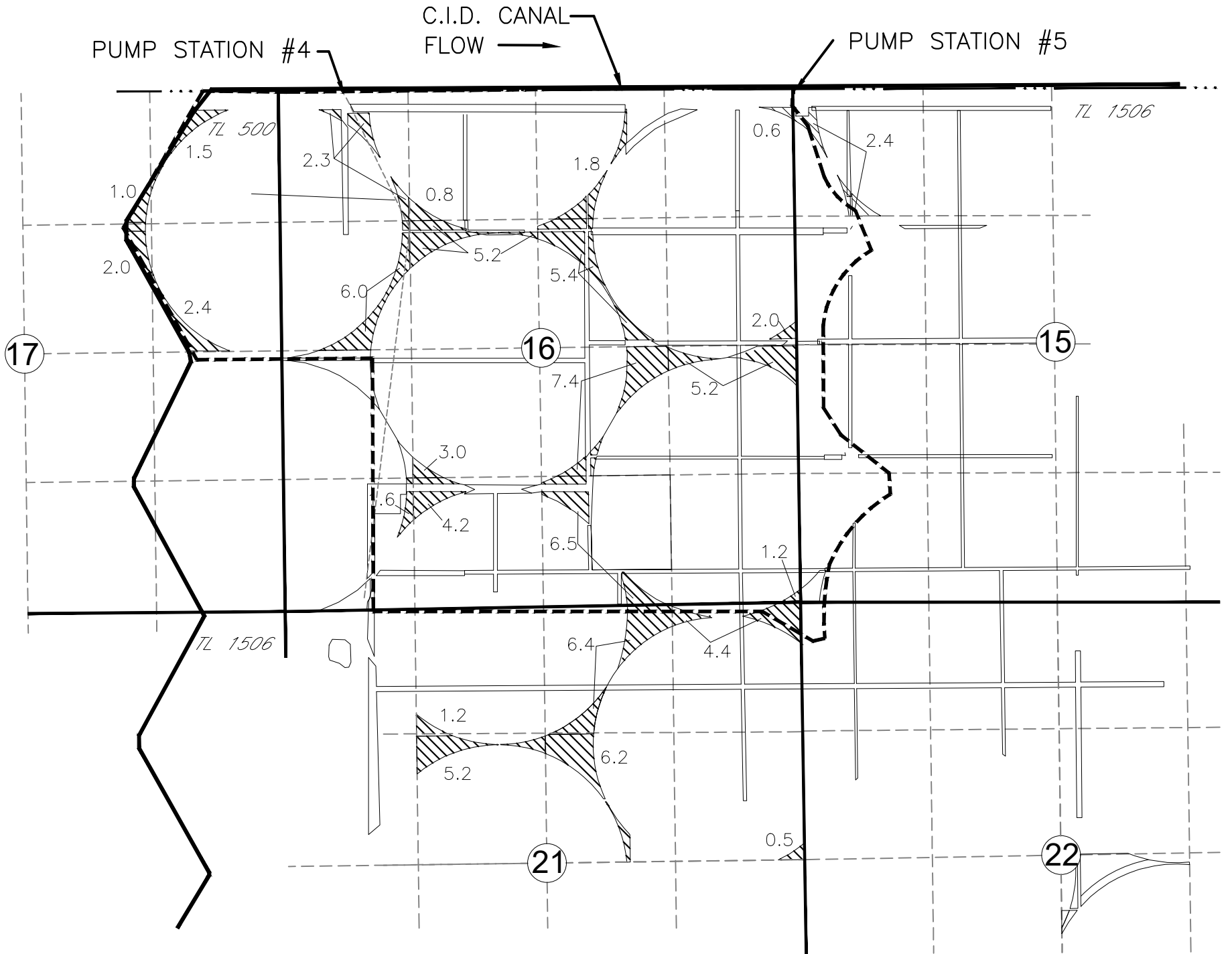
OCT. 08 2019

OWRD

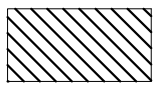
13266 -

NOTE:
 THE PURPOSE OF THIS MAP IS TO IDENTIFY THE APPROXIMATE LOCATION OF THE WATER RIGHT. IT IS NOT INTENDED TO PROVIDE INFORMATION RELATIVE TO THE LOCATION OF PROPERTY OWNERSHIP BOUNDARY LINES. PIPE LOCATIONS AND SIZES WHERE SHOWN WERE PROVIDED BY FARM OPERATIONAL PERSONNEL AND ARE APPROXIMATE LOCATIONS AND SIZES.

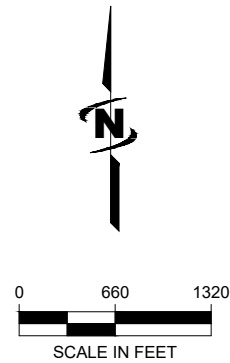
**TRANSFER APPLICATION MAP
CANYON FARM II, LLC TO CANYON FARM II, LLC
REMAINING RIGHTS FOR CERTIFICATE 86992
T3N, R26E, W.M., MORROW COUNTY**



LEGEND



86.4 AC OF CERT 86992

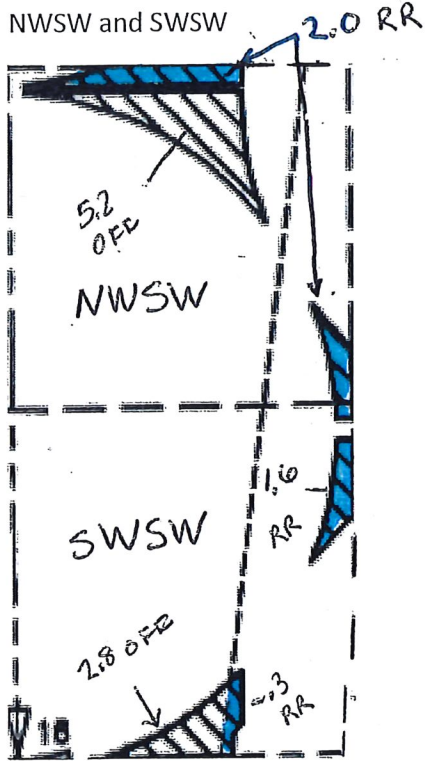




NOTE:
THE PURPOSE OF THIS MAP IS TO IDENTIFY THE APPROXIMATE LOCATION OF THE WATER RIGHT. IT IS NOT INTENDED TO PROVIDE INFORMATION RELATIVE TO THE LOCATION OF PROPERTY OWNERSHIP BOUNDARY LINES. PIPE LOCATIONS AND SIZES WHERE SHOWN WERE PROVIDED BY FARM OPERATIONAL PERSONNEL AND ARE APPROXIMATE LOCATIONS AND SIZES.



DRAWING: \\KWF\FILES\Public\Project\JUB\30-18-073 - Fall Line Lost Valley Farm\CAD\WR'S\30-08-016 Remain wr's 86992.dwg
PRINTED BY: ruffard on 01/14/20 08:04 AM



Township 3 North, Range 17 E. WM Section 16
NWSW and SWSW

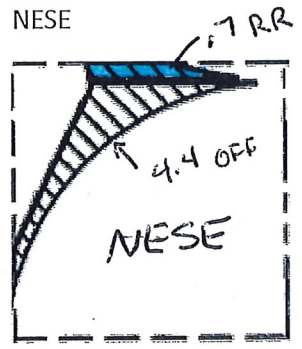




NWSW: 5.2 acres Transferred OFF T-13266 
Remaining Right = 2.0 acres 

SWSW: 2.8 acres Transferred OFF T-13266 
Remaining Right = 1.9 acres 



Township 3 North, Range 17 E. WM Section 17
NESE

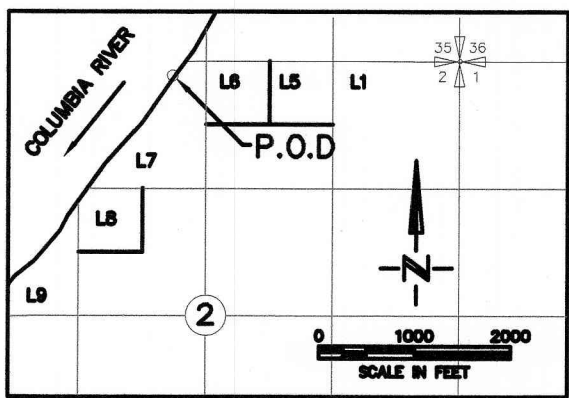
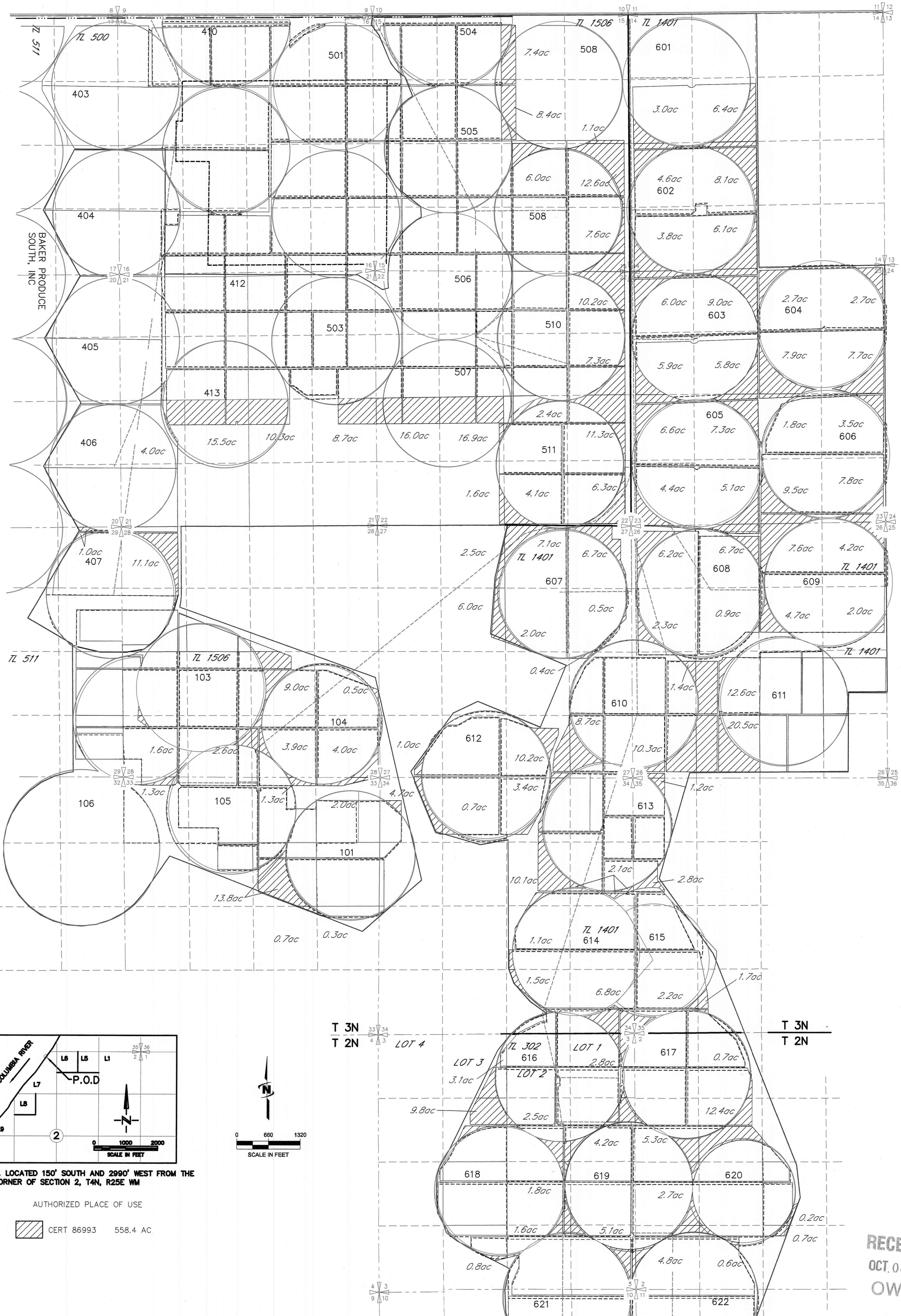


4.4 acres Transferred OFF T-13266 
Remaining Right = 0.7 acres 

T-13266-RR- C.86992

CANYON FARM II, LLC TO CANYON FARM II, LLC
 2019 TRANSFER APPLICATION MAP - CERT 86993
 T2N & T3N R26EWM

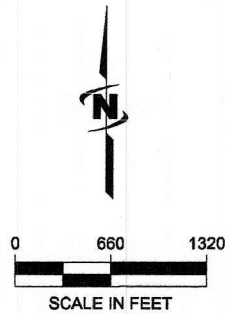
FROM



P.O.D. LOCATED 150' SOUTH AND 2990' WEST FROM THE NE CORNER OF SECTION 2, T4N, R25E WM

AUTHORIZED PLACE OF USE

CERT 86993 558.4 AC



T 3N
T 2N

T 3N
T 2N

RECEIVED
 OCT. 08 2019
 OWRD

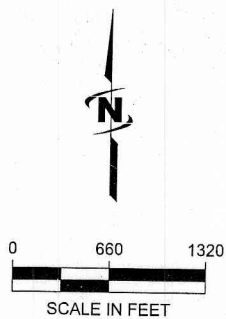
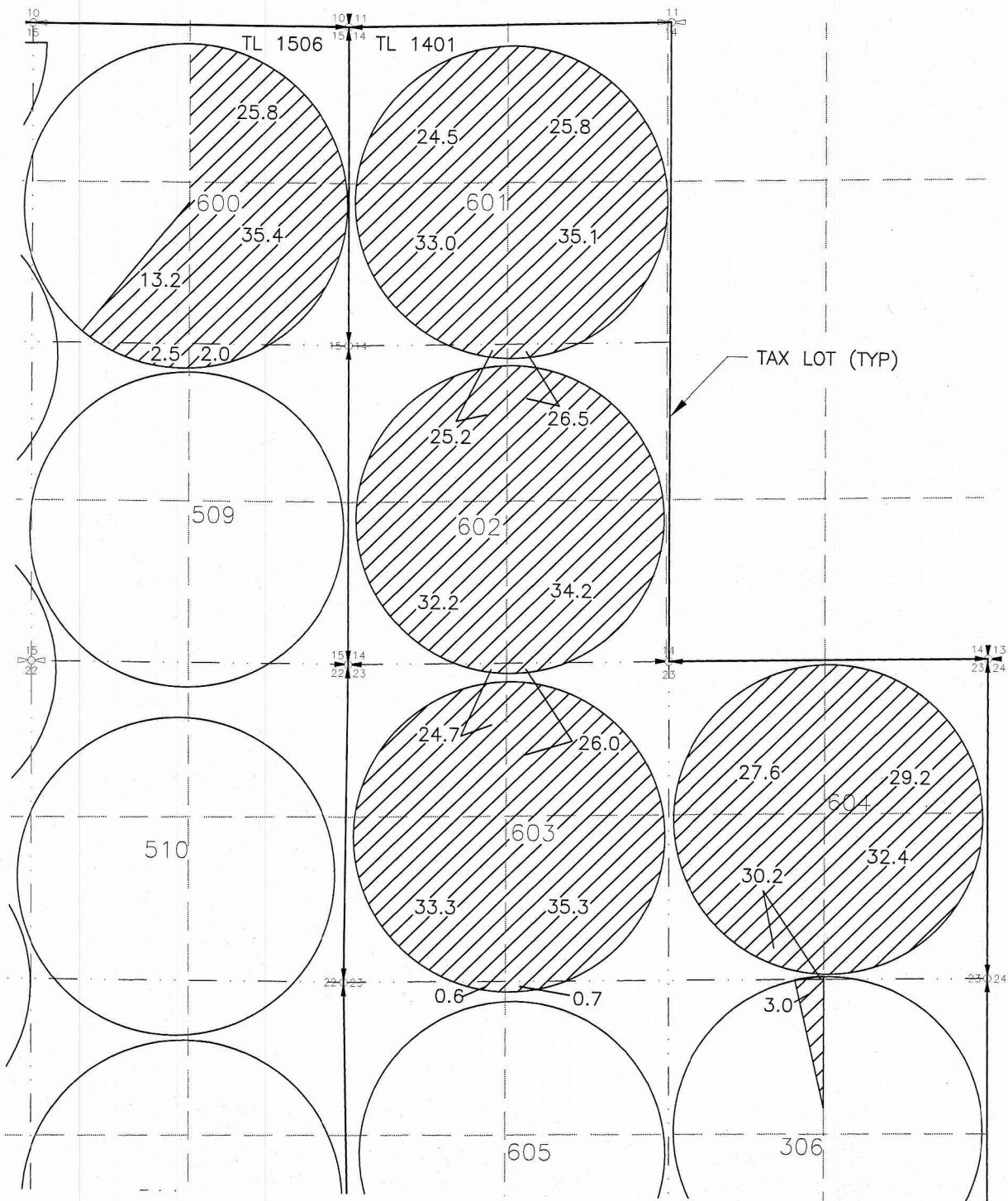
NOTE: THE PURPOSE OF THIS MAP IS TO IDENTIFY THE APPROXIMATE LOCATION OF THE WATER RIGHT. IT IS NOT INTENDED TO PROVIDE INFORMATION RELATIVE TO THE LOCATION OF PROPERTY OWNERSHIP BOUNDARY LINES, PIPE LOCATIONS AND SIZES WHERE SHOWN WHERE PROVIDED BY FAH. THIS MAP IS TO IDENTIFY THE APPROXIMATE LOCATION OF THE WATER RIGHT. IT IS NOT INTENDED TO PROVIDE INFORMATION RELATIVE TO THE LOCATION OF PROPERTY OWNERSHIP BOUNDARY LINES, PIPE LOCATIONS AND SIZES WHERE SHOWN WHERE PROVIDED BY FAH. RELATIVE TO THE LOCATION OF PROPERTY OWNERSHIP BOUNDARY LINES, PIPE LOCATIONS AND SIZES WHERE SHOWN WHERE PROVIDED BY FAH. RELATIVE TO THE LOCATION OF PROPERTY OWNERSHIP BOUNDARY LINES, PIPE LOCATIONS AND SIZES WHERE SHOWN WHERE PROVIDED BY FAH. RELATIVE TO THE LOCATION OF PROPERTY OWNERSHIP BOUNDARY LINES, PIPE LOCATIONS AND SIZES WHERE SHOWN WHERE PROVIDED BY FAH.

DRAWING: \\\K...
 PRINTED BY: rwi...
 Canyon Farm WR.dwg
 FILES\Public\Project\JUB\30-18-073 - Fall Line Lost Valley Farm\CAD\WR\S\WATER RIGHT MAPS\30-08-016 Can...
 willard on 08/15/19 09:49 AM


13266

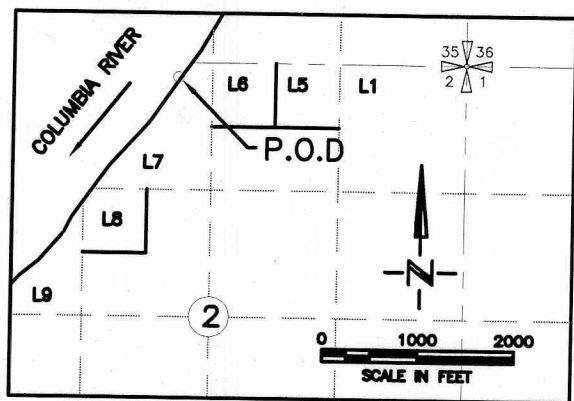
CANYON FARM II, LLC TO CANYON FARM II, LLC
 2019 TRANSFER APPLICATION MAP
 CERT 86993
 T3N R26EWM

TO



PROPOSED PLACE OF USE

 CERT 86993 558.4 AC



P.O.D. LOCATED 150' SOUTH AND 2990' WEST FROM THE NE CORNER OF SECTION 2, T4N, R25E WM

Received by OWRD

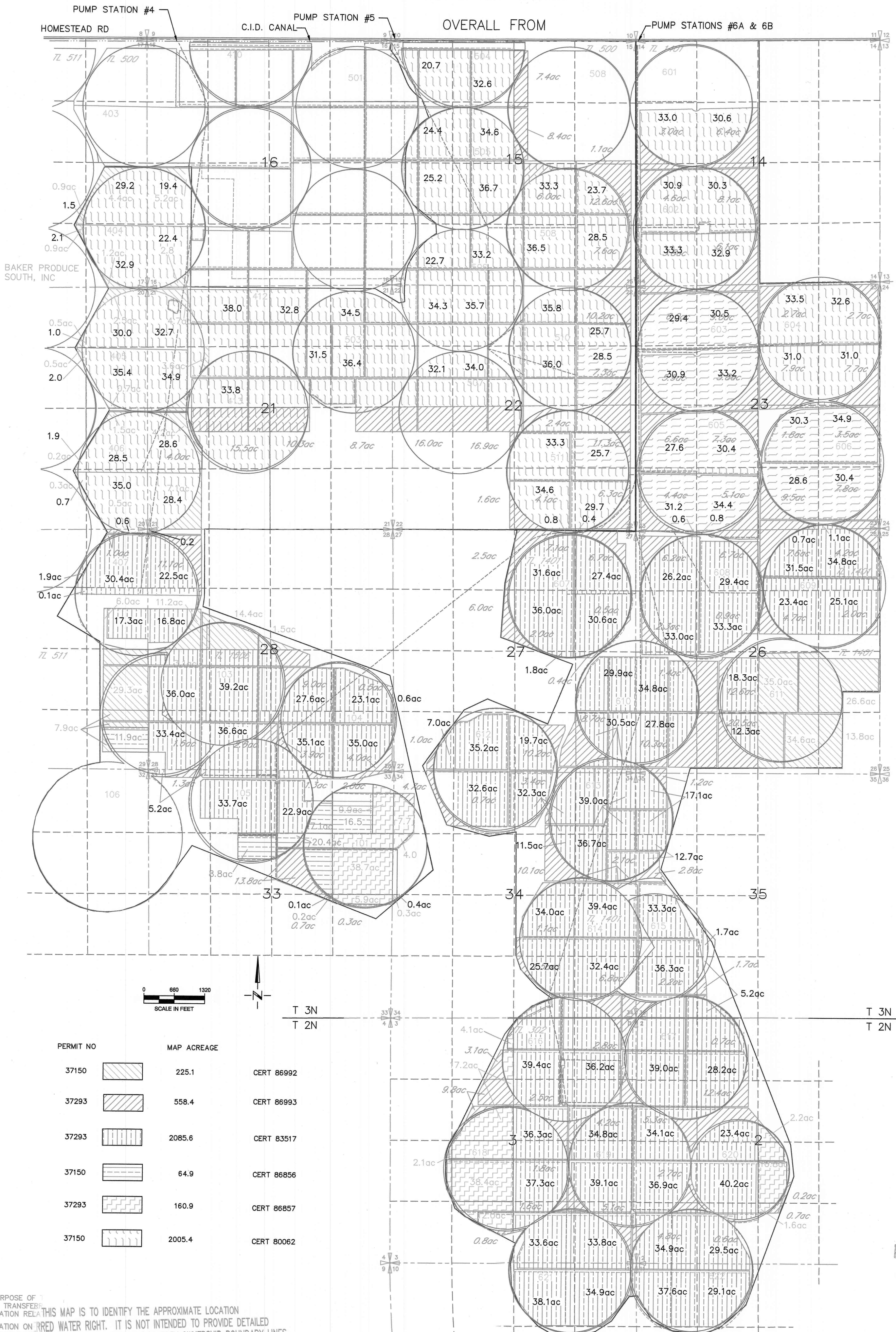
OCT 08 2019

18266 - Salem, OR

NOTE:
 THE PURPOSE OF THIS MAP IS TO IDENTIFY THE APPROXIMATE LOCATION OF THE WATER RIGHT. IT IS NOT INTENDED TO PROVIDE INFORMATION RELATIVE TO THE LOCATION OF PROPERTY OWNERSHIP BOUNDARY LINES. PIPE LOCATIONS AND SIZES WHERE SHOWN WERE PROVIDED BY FARM OPERATIONAL PERSONNEL AND ARE APPROXIMATE LOCATIONS AND SIZES.

CANYON FARM II, LLC TO CANYON FARM II, LLC
 2019 TRANSFER APPLICATION MAP FOR PORTIONS OF CERTIFICATES
 80062, 83517, 86992, 86993 AND ALL OFF 86856 & 86857
 T2N & T3N R26EWM

OVERALL FROM



PERMIT NO	MAP ACREAGE	CERT
37150	225.1	CERT 86992
37293	558.4	CERT 86993
37293	2085.6	CERT 83517
37150	64.9	CERT 86856
37293	160.9	CERT 86857
37150	2005.4	CERT 80062

NOTE:
 THE PURPOSE OF THIS MAP IS TO IDENTIFY THE APPROXIMATE LOCATION OF THE TRANSFERRED WATER RIGHT. IT IS NOT INTENDED TO PROVIDE DETAILED INFORMATION ON THE LOCATION OF PROPERTY OWNERSHIP BOUNDARY LINES.
 DRAWING: [Signature]
 PRINTED BY: [Signature]

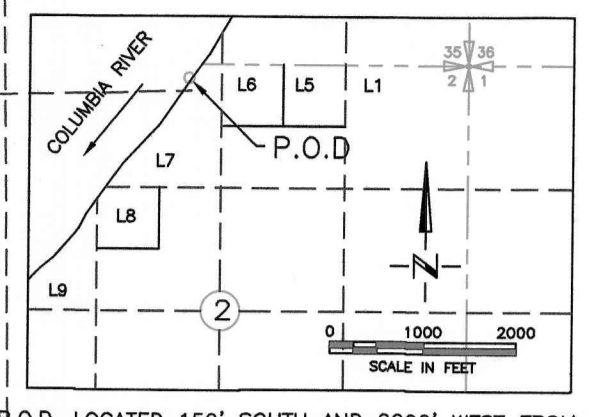
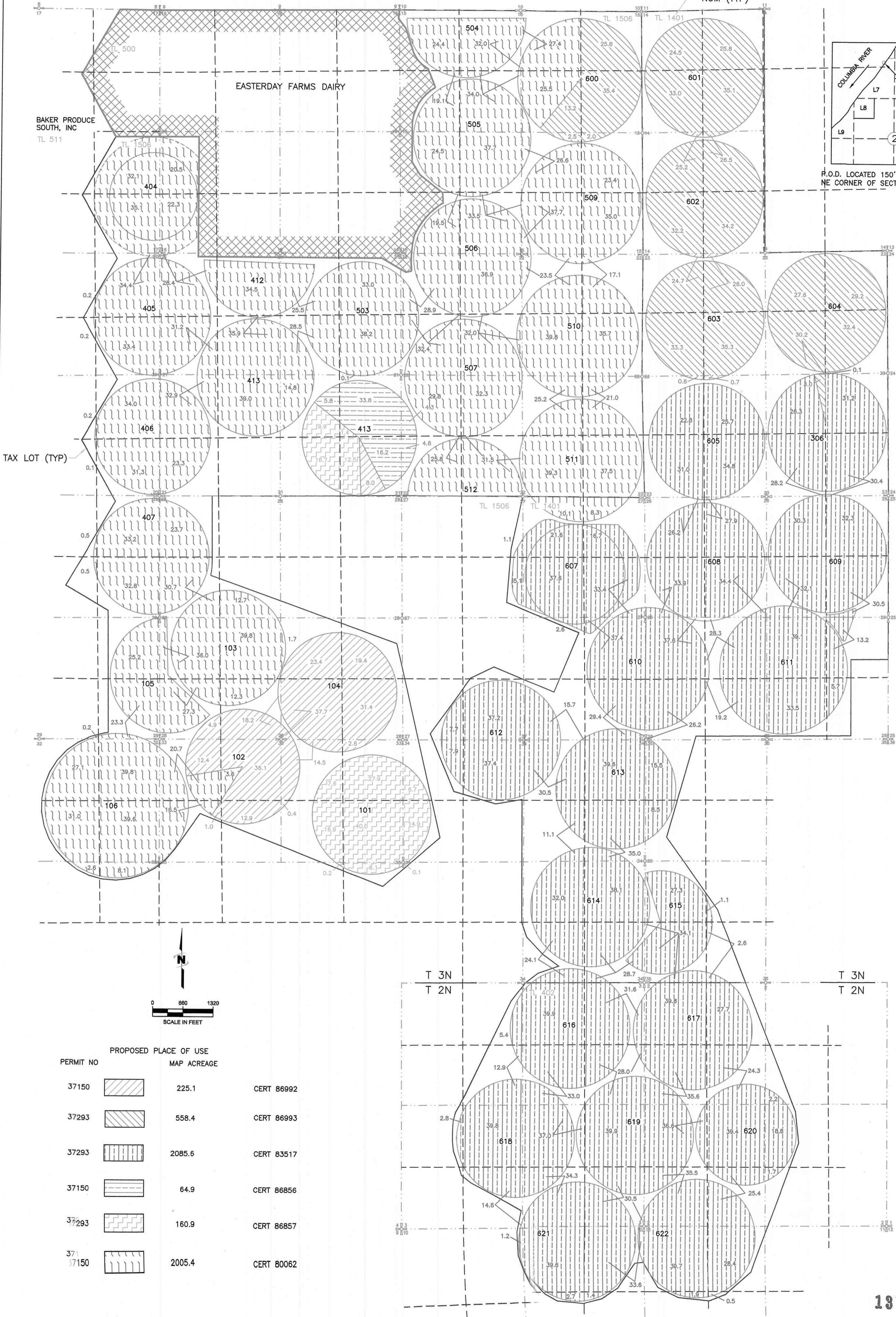
RECEIVED
 OCT. 08 2019
 OWRD

13266 -

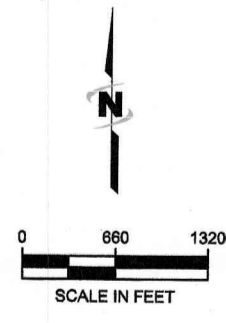
CANYON FARM II, LLC TO CANYON FARM II, LLC
 2019 TRANSFER APPLICATION MAP FOR PORTIONS OF CERTIFICATES
 80062, 83517, 86992, 86993 AND ALL OFF 86856 & 86857
 T2N & T3N R26EWM

OVERALL TO

TAX LOT
 NUM (TYP)



P.O.D. LOCATED 150' SOUTH AND 2990' WEST FROM THE
 NE CORNER OF SECTION 2, T4N, R25E WM



PERMIT NO	PROPOSED PLACE OF USE MAP ACREAGE	CERT
37150	225.1	CERT 86992
37293	558.4	CERT 86993
37293	2085.6	CERT 83517
37150	64.9	CERT 86856
37293	160.9	CERT 86857
37150	2005.4	CERT 80062

RECEIVED
 OCT. 08 2019
 OWRD

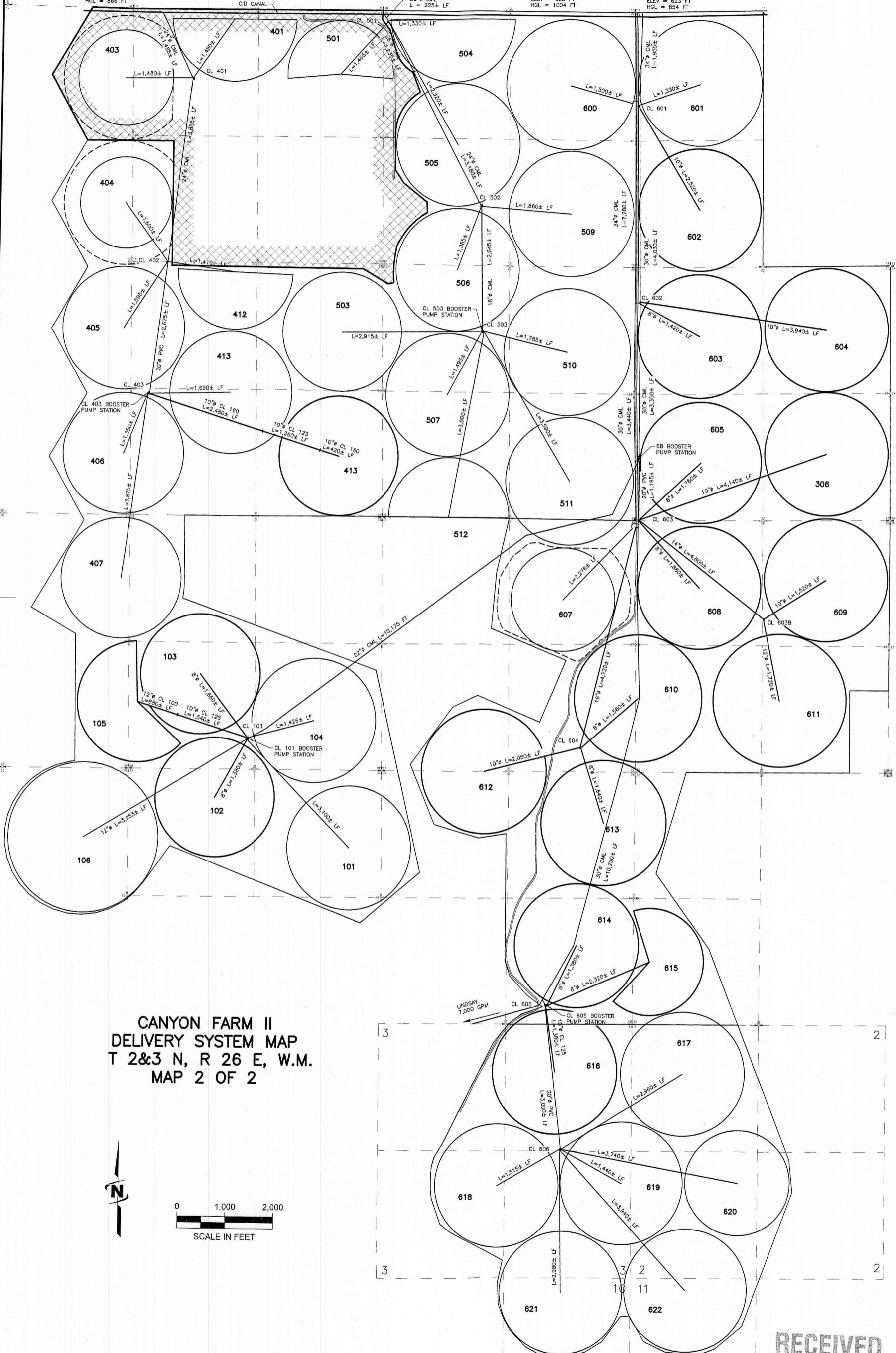
13266 -

PUMP STA 4A
 WATER RIGHT - 9,125 GPM
 PUMP TAG RATINGS
 2 - 300 HP, 3,400 GPM
 1 - 200 HP, 2,325 GPM
 TOTAL = 9,125 GPM @ 280 TDH (121 PSI)
 ELEV = 635 FT
 NORMAL MAX PRESSURE = 100 PSI
 HGL = 866 FT

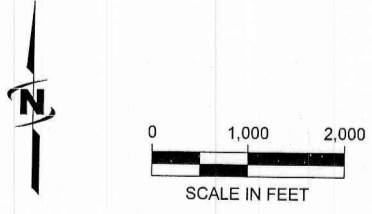
PUMP STATION 5
 WATER RIGHT - 13,000 GPM
 PUMP TAG RATINGS
 1 - 200 HP, 2,160 GPM
 1 - 300 HP, 3,150 GPM
 1 - 400 HP, 4,301 GPM
 1 - 400 HP, 4,200 GPM?
 TOTAL = 13,811 GPM @ 301 TDH (130 PSI)
 ELEV = 633 FT
 MAX OPERATING PRESSURE = 105 PSI
 HGL = 876 FT

PUMP STA 6A
 WATER RIGHT - 25,650 GPM
 PUMP TAG RATINGS
 4 - 400 HP, 3,525 GPM
 1 - 450 HP, 3,856 GPM
 1 - 500 HP, 4,150 GPM
 1 - 500 HP, 4,501 GPM
 TOTAL = 26,637 GPM @ 370 TDH (160 PSI)
 OPERATING = 381 TDH (165 PSI)
 ELEV = 623 FT
 HGL = 1004 FT

PUMP STA 6B
 WATER RIGHT - 19,000 GPM
 PUMP TAG RATINGS
 2 - 450 HP, 4,902 GPM
 2 - 500 HP, 5,502 GPM
 TOTAL = 20,808 GPM @ 290 TDH (125 PSI)
 OPERATING = 231 TDH (100 PSI)
 ELEV = 623 FT
 HGL = 854 FT



CANYON FARM II
 DELIVERY SYSTEM MAP
 T 2&3 N, R 26 E, W.M.
 MAP 2 OF 2

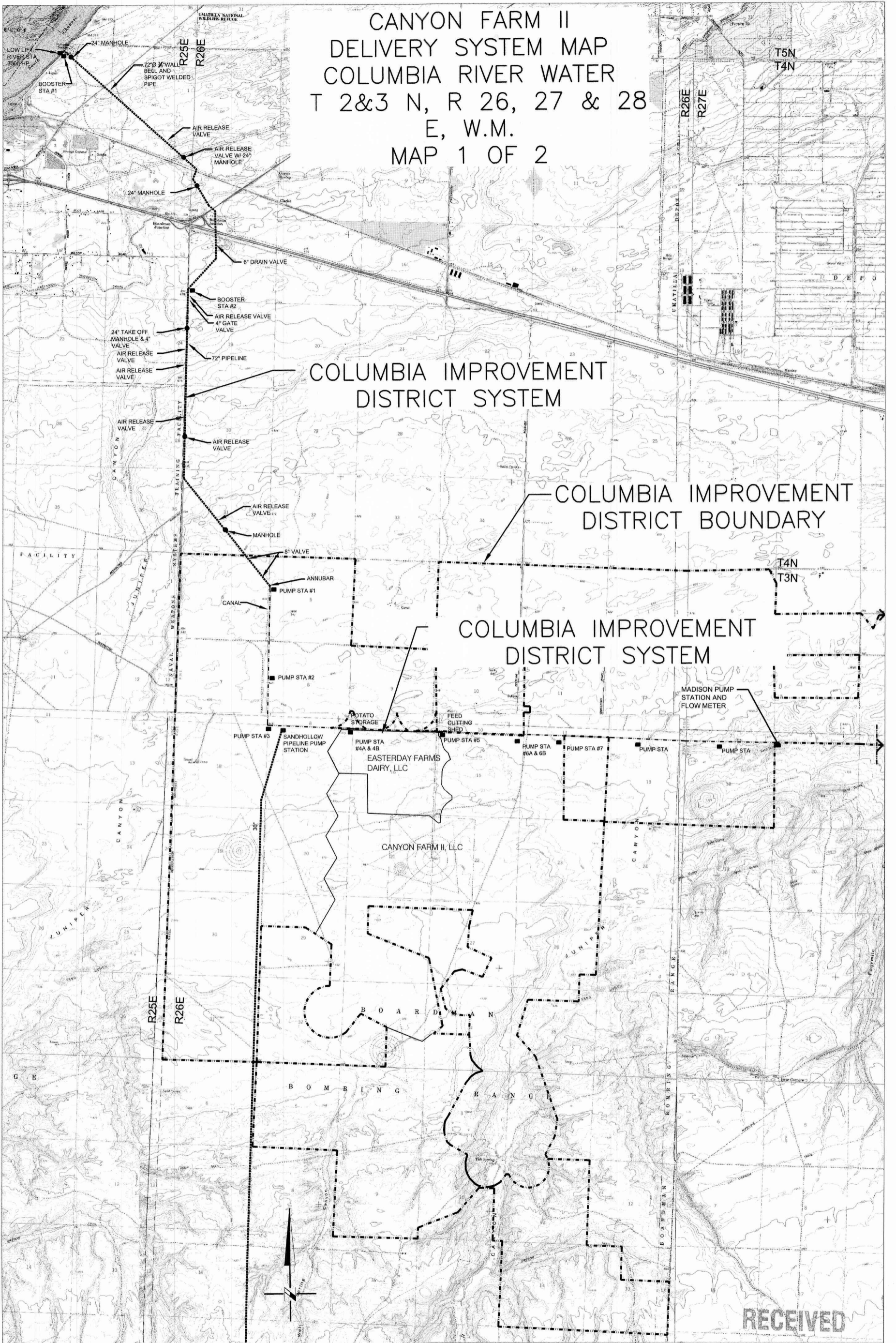


IRRIGATION WATER

RECEIVED
 OCT. 08 2019
 OWRD

18266 -

CANYON FARM II
 DELIVERY SYSTEM MAP
 COLUMBIA RIVER WATER
 T 2&3 N, R 26, 27 & 28
 E, W.M.
 MAP 1 OF 2



RECEIVED
 OCT 08 2019
 OWRD

18266-