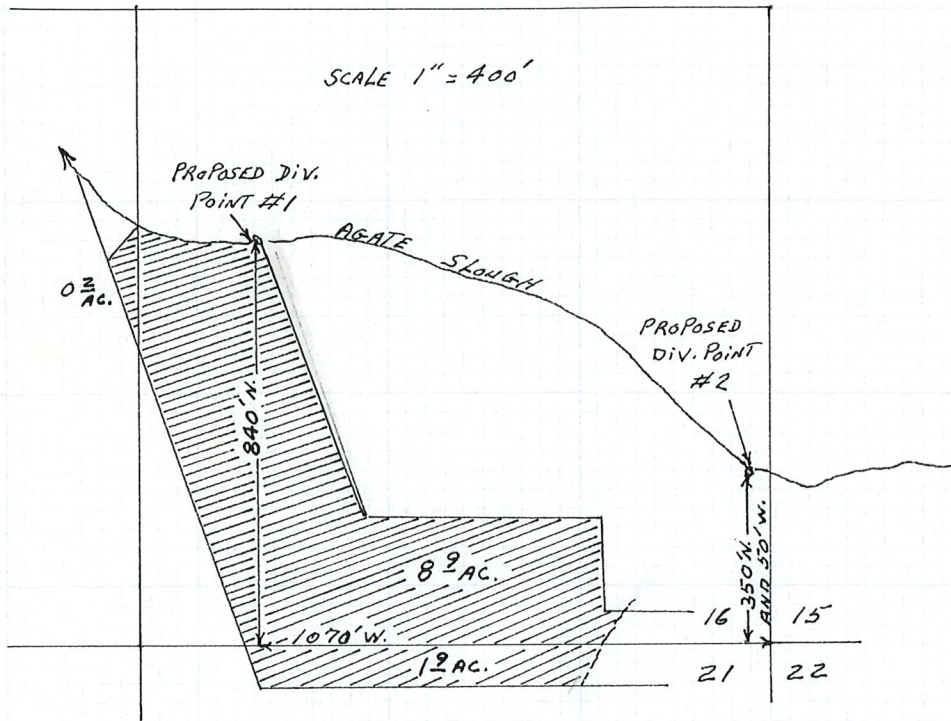
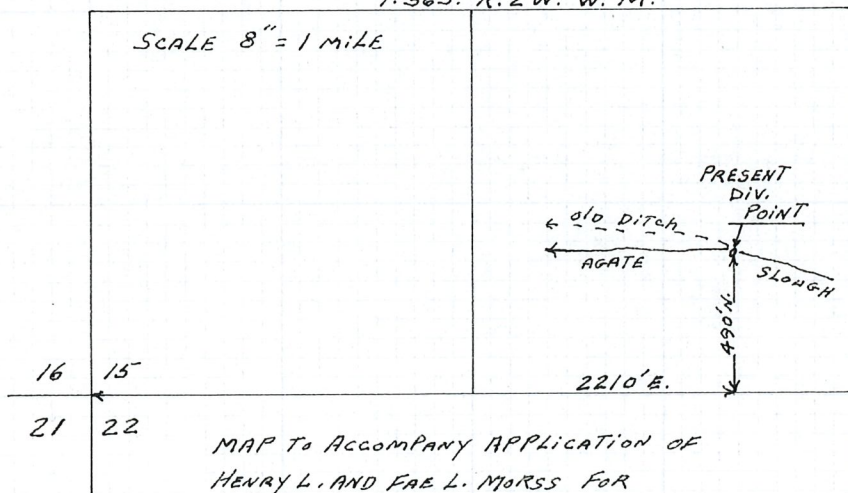


T.36S. R.2W. W.M.



T.36S. R.2W. W.M.



MAP TO ACCOMPANY APPLICATION OF
HENRY L. AND FAE L. MORSS FOR
CHANGE IN POINT OF DIVERSION

RECEIVED

JUL 18 1976

WATER RESOURCES DEPT
SALEM, OREGON

