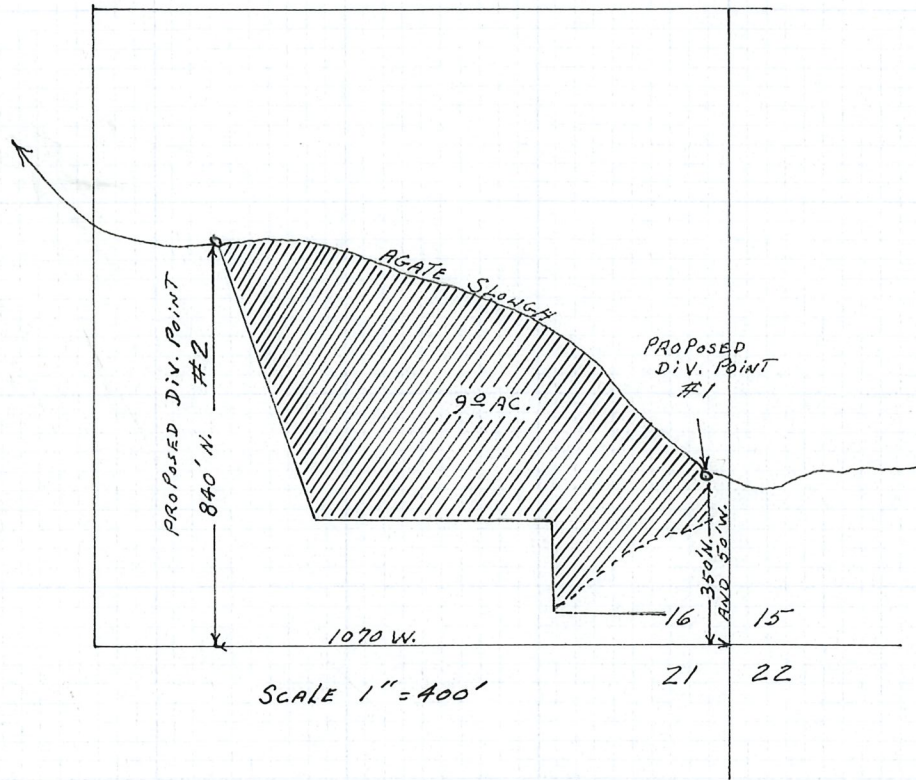
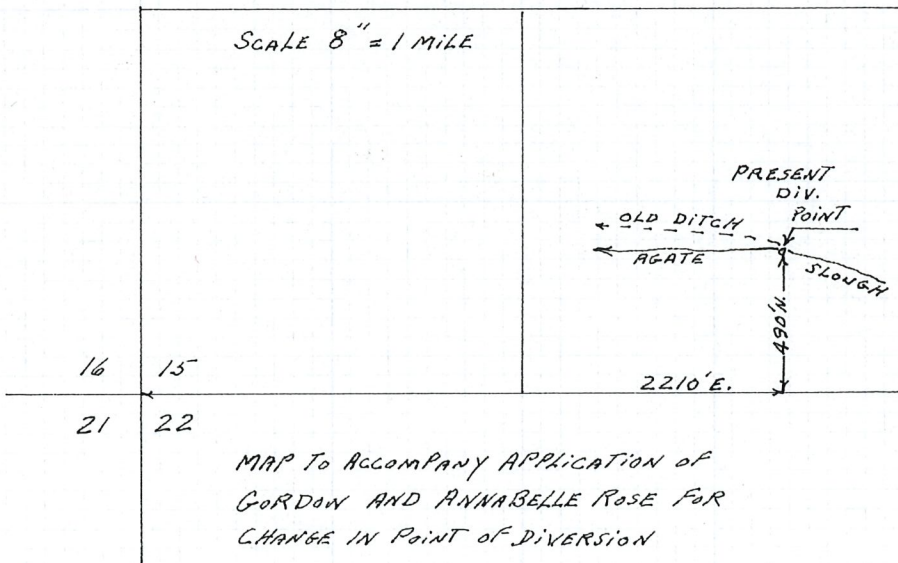


T.365. R.2W. W. M.



T.365. R.2W. W. M.



MAP TO ACCOMPANY APPLICATION OF
GORDON AND ANNABELLE ROSE FOR
CHANGE IN POINT OF DIVERSION

RECEIVED
JUL 13 1976
WATER RESOURCES DEPT
SALEM, OREGON

