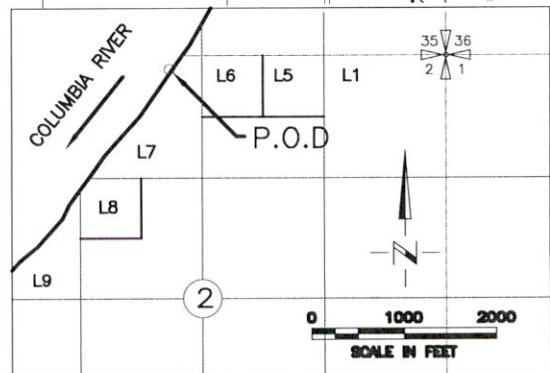
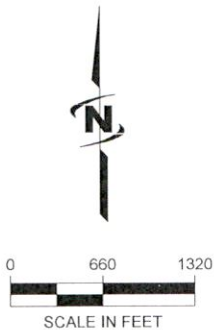
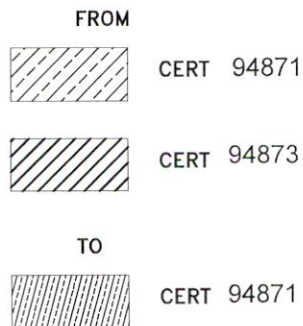
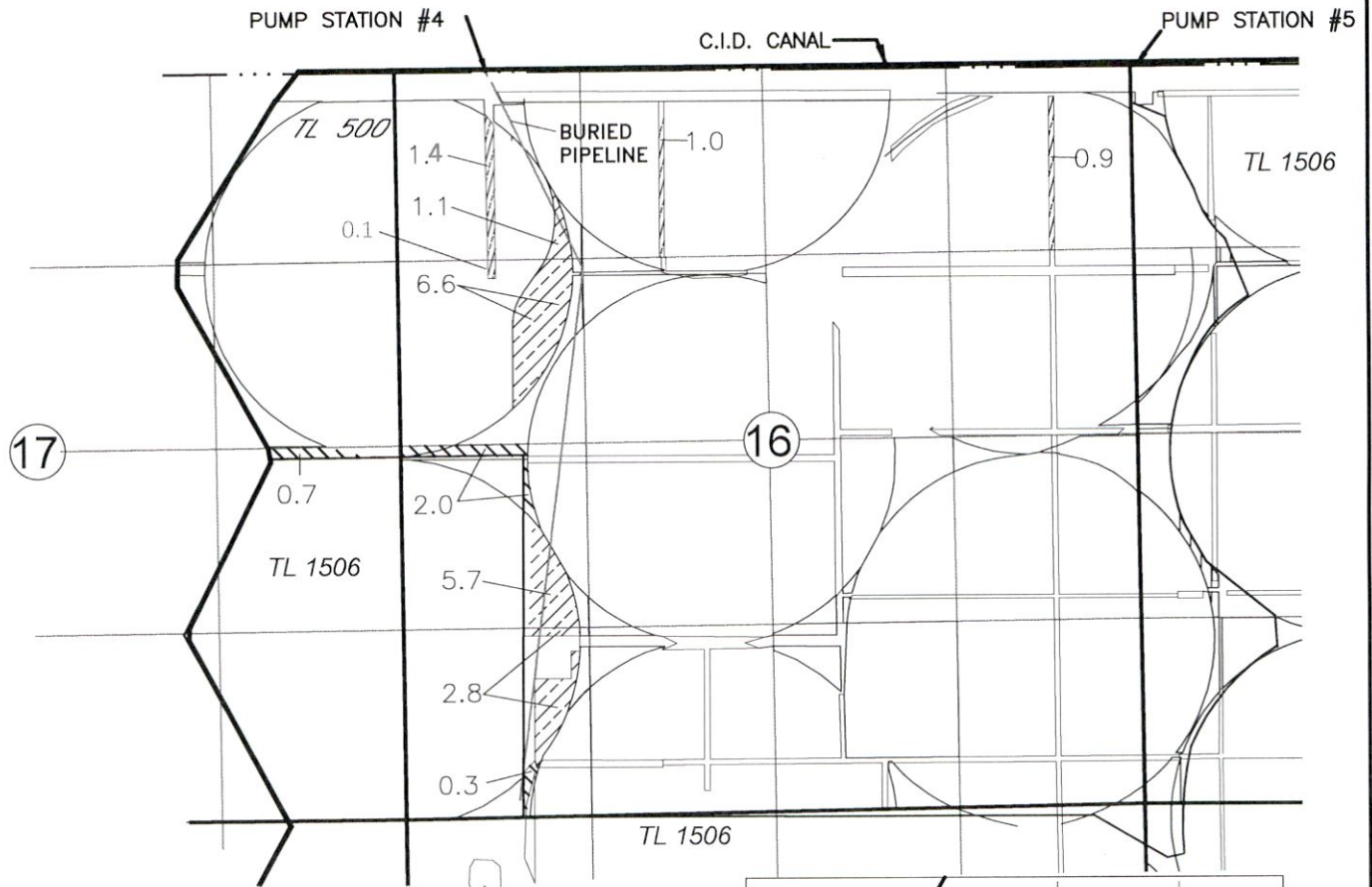


EASTERDAY FARMS DAIRY, LLC
 TO
 EASTERDAY FARMS DAIRY, LLC & CANYON FARM II, LLC
 2020 TEMPORARY TRANSFER APPLICATION
 PORTIONS OF CERT'S 94871 & 94873
 T3N, R26E, W.M., MORROW COUNTY
 MAP 1 OF 2



P.O.D. LOCATED 150' SOUTH AND 2990' WEST FROM THE NE CORNER OF SECTION 2, T4N, R25E WM

NOTE:
 THE PURPOSE OF THIS MAP IS TO IDENTIFY THE APPROXIMATE LOCATION OF THE WATER RIGHT. IT IS NOT INTENDED TO PROVIDE INFORMATION RELATIVE TO THE LOCATION OF PROPERTY OWNERSHIP BOUNDARY LINES. PIPE LOCATIONS AND SIZES WHERE SHOWN WERE PROVIDED BY FARM OPERATIONAL PERSONNEL AND ARE APPROXIMATE LOCATIONS AND SIZES.

DRAWING: \\KWKFILES\Public\Project\JUE\30-12-084 - Easterday Farms\001 Water Rights\LINDSAY CANYON 2020.dwg
 PRINTED BY: rwillard on 02/04/20 01:50 PM

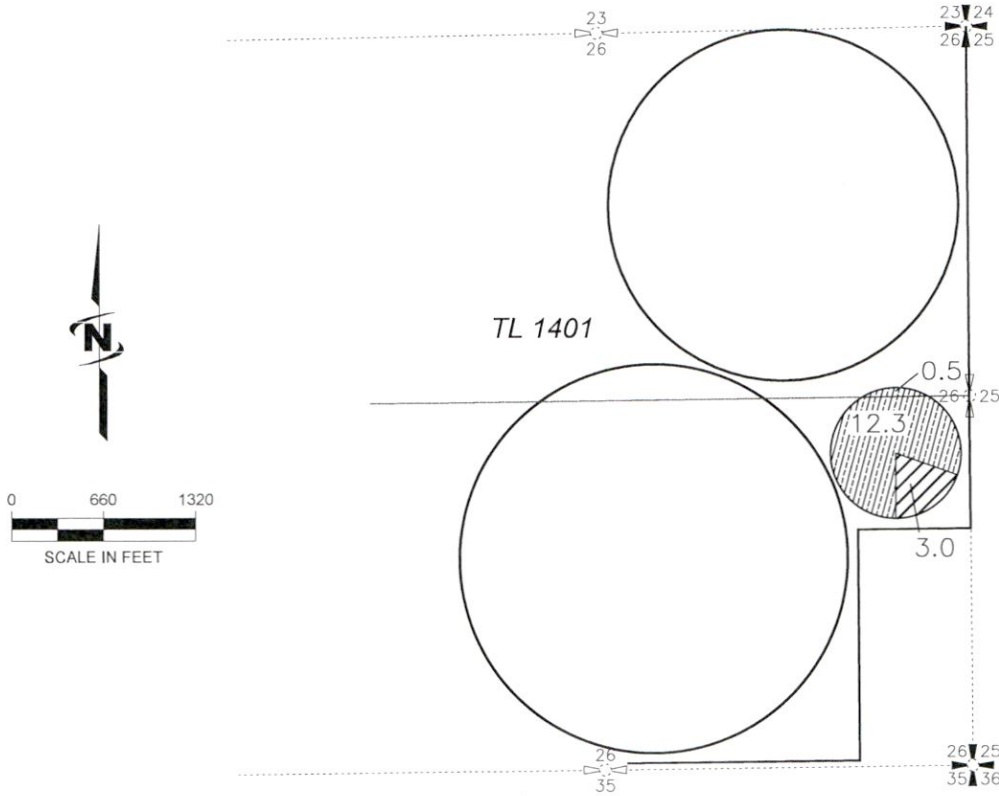
13389 -

Received by OWRD

MAR 05 2020

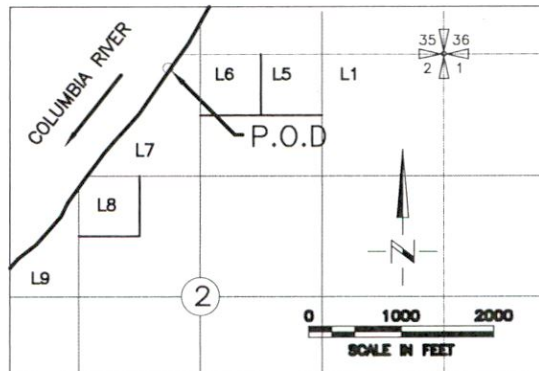
Salem, OR

EASTERDAY FARMS DAIRY, LLC
 TO
 EASTERDAY FARMS DAIRY, LLC & CANYON FARM II, LLC
 2020 TEMPORARY TRANSFER APPLICATION
 PORTIONS OF CERT'S 94871 & 94873
 T3N, R26E, W.M., MORROW COUNTY
 MAP 2 OF 2



Received by OWRD

MAR 05 2020



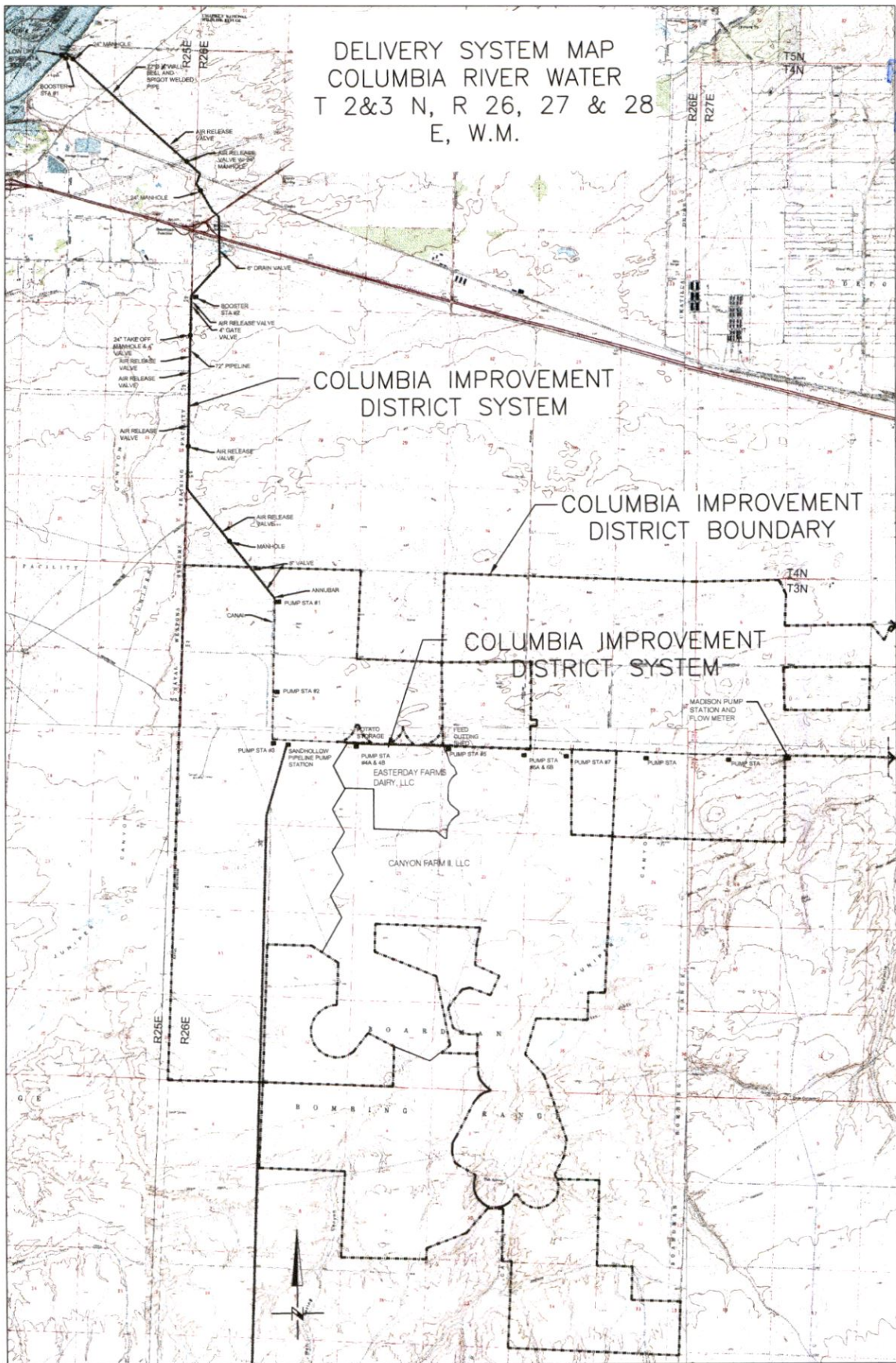
P.O.D. LOCATED 150' SOUTH AND 2990' WEST FROM THE NE CORNER OF SECTION 2, T4N, R26E, W.M.

NOTE:
 THE PURPOSE OF THIS MAP IS TO IDENTIFY THE APPROXIMATE LOCATION OF THE WATER RIGHT. IT IS NOT INTENDED TO PROVIDE INFORMATION RELATIVE TO THE LOCATION OF PROPERTY OWNERSHIP BOUNDARY LINES, PIPE LOCATIONS AND SIZES WHERE SHOWN WERE PROVIDED BY FARM OPERATIONAL PERSONNEL AND ARE APPROXIMATE LOCATIONS AND SIZES.

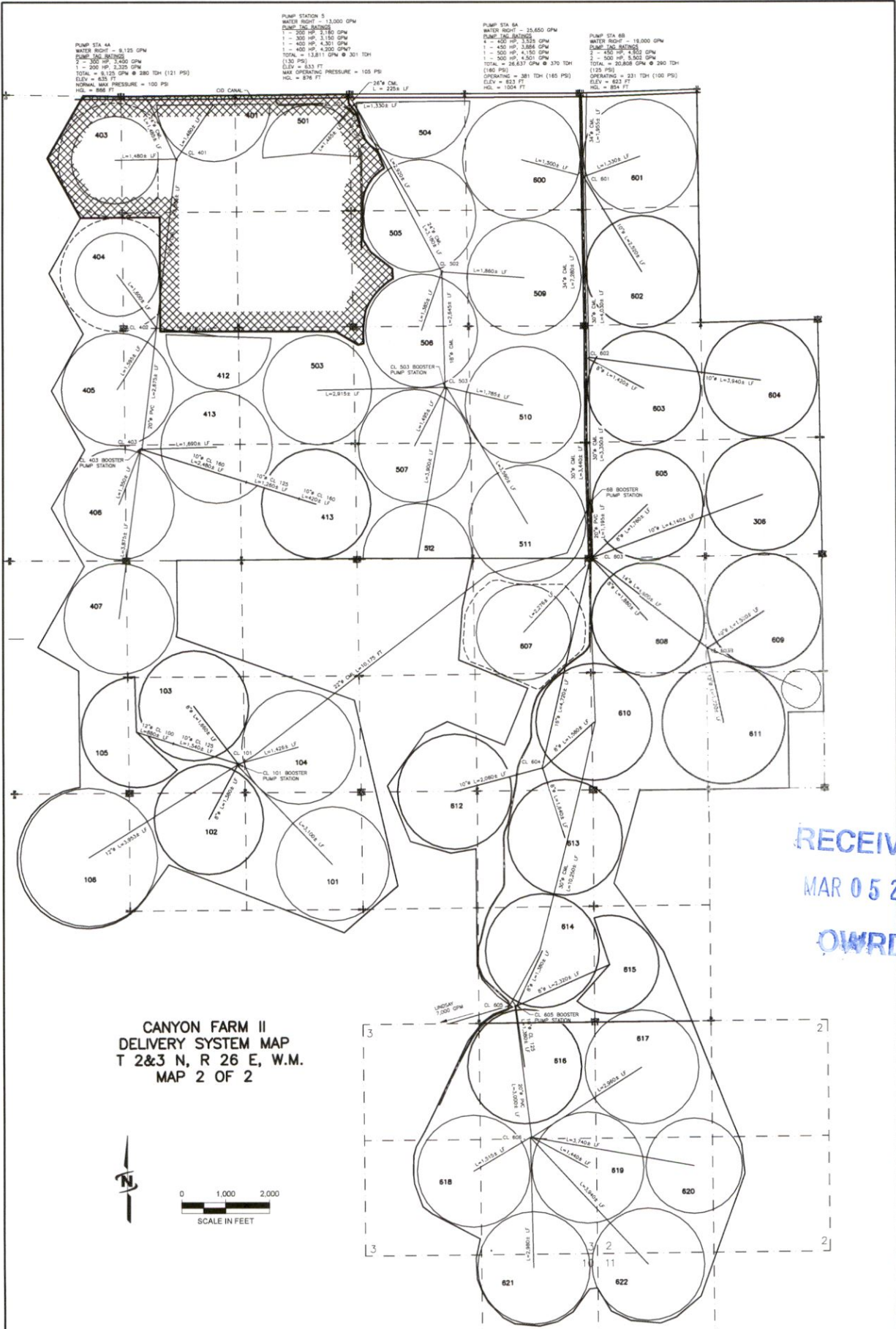
DRAWING: \\KWKFILES\Public\Project\JUB\30-12-054 - Easterday Farms\001 Water Rights\LINDSAY CANYON 2020.dwg
 PRINTED BY: rwillard on 02/04/20 01:44 PM

DELIVERY SYSTEM MAP
 COLUMBIA RIVER WATER
 T 2&3 N, R 26, 27 & 28
 E, W.M.

RECEIVED
 MAR 05 2020
 OWRD

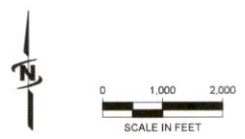


13389 -



RECEIVED
 MAR 05 2020
 OWRD

**CANYON FARM II
 DELIVERY SYSTEM MAP
 T 2&3 N, R 26 E, W.M.
 MAP 2 OF 2**



IRRIGATION WATER 13389 -

CLUSTER TO PIVOT PIPES ARE
 10" UNLESS NOTED OTHERWISE