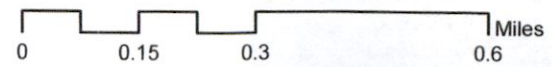
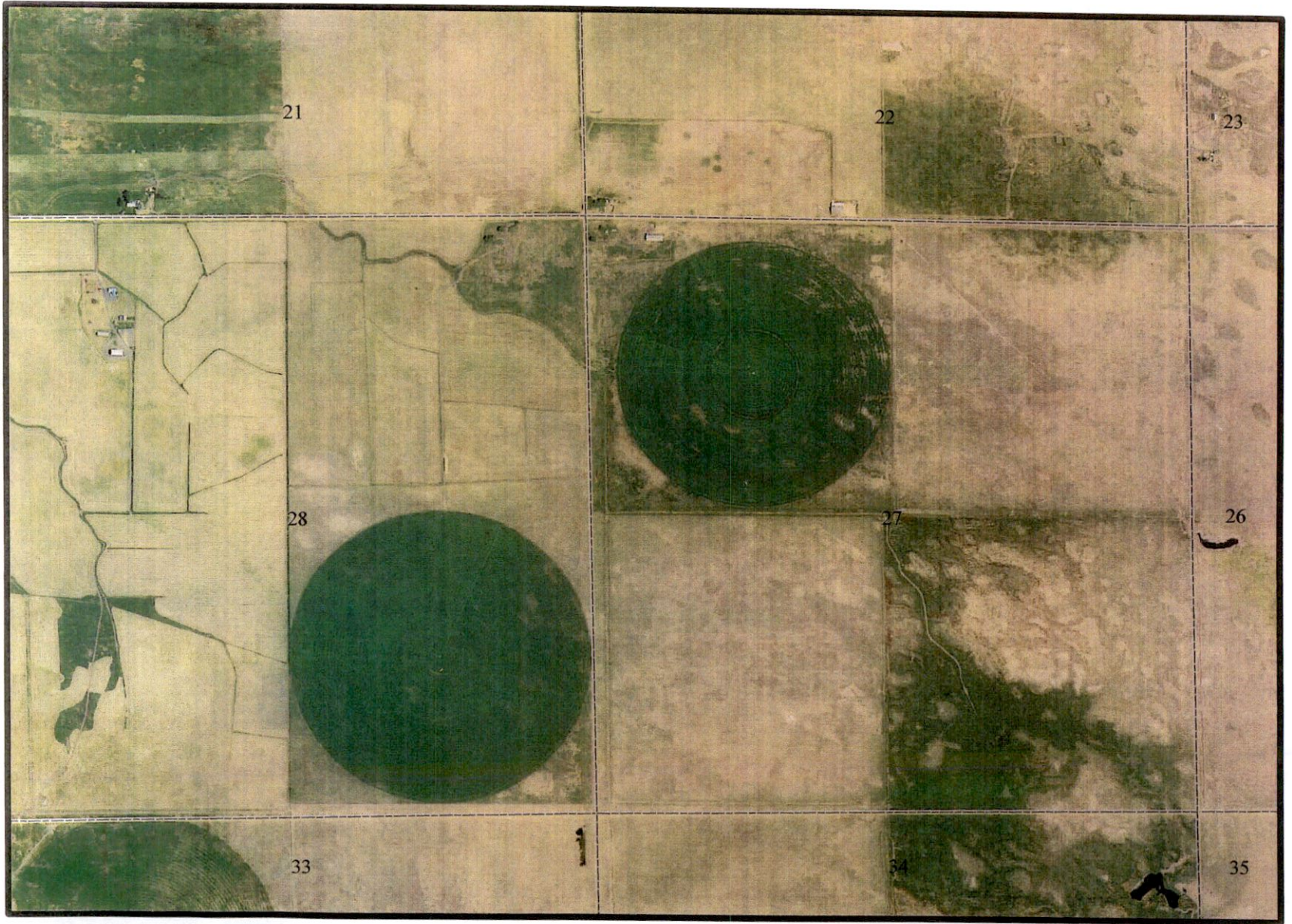


T23S R 32E, W.M.

June 2016 aerial imagery from NRCS Gateway website imported into ArcMap GIS software in statewide Lambert projection.



13395

MAR 12 2020

OWRD

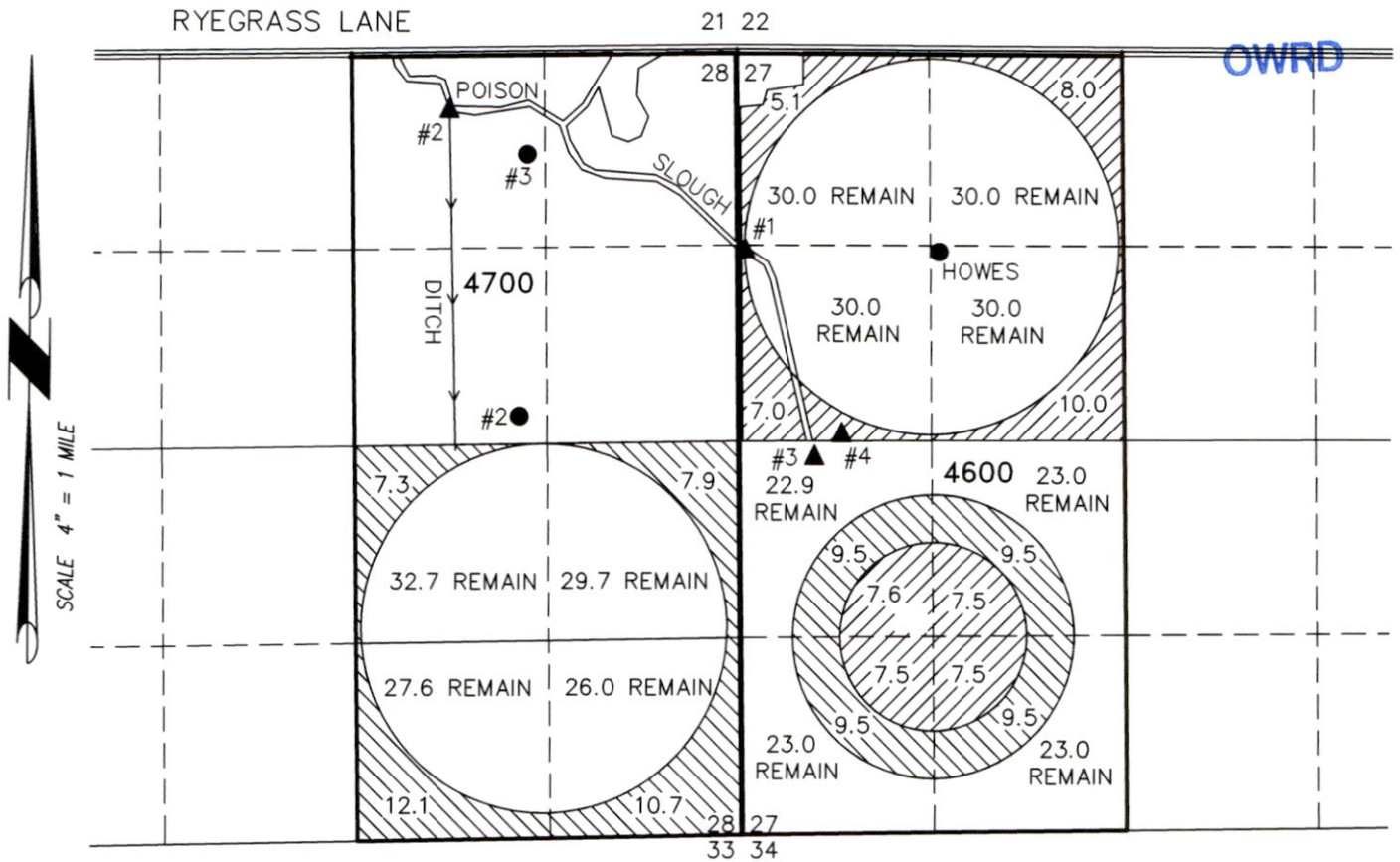
RECEIVED

MAP TO ACCOMPANY APPLICATION TO CHANGE PLACE OF USE & ADD POINTS OF DIVERSION/APPROPRIATION FOR DUNBAR SILVIES RIVER RANCH, LLC

RECEIVED



TAX LOTS 4600 & 4700
IN SECTIONS 27 & 28, TOWNSHIP 23 SOUTH, RANGE 32 EAST, W.M.
HARNEY COUNTY, OREGON

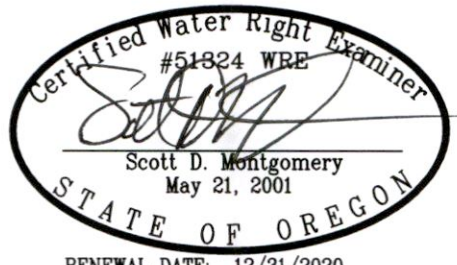
MAR 12 2020



- WELL #2 (HARN 602) IN THE SW 1/4 OF THE NE 1/4 SECTION 28 & 2890' NORTH & 1520' WEST FROM THE SE CORNER SECTION 28.
- HOWES WELL (HARN 592) IN THE SE 1/4 OF THE NW 1/4 SECTION 27 & 20.5 CHAINS SOUTH & 21 CHAINS EAST FROM THE NW CORNER SECTION 27.
- WELL #3 (HARN 52832) IN THE NW 1/4 OF THE NE 1/4 SECTION 28 AT 43°33'14.87" N 118°53'16.62" W.

- ▲ PROPOSED POD #4 IN THE SW 1/4 OF THE NW 1/4 SECTION 27. GEODETIC COORDINATES ARE 43°32'54.84" N & 118°52'46.84" W IN WGS84 PROJECTION.

-  30.1 ACRES 'IS' FROM HOWES WELL CERTIFICATE 28656 (PERMIT G-47) & 30.1 ACRES 'IR' FROM POISON CREEK SLOUGH CERTIFICATE 1991 (PERMIT 3372) TRANSFERRED. REPLACED BY 30.1 ACRES 'IR' FROM POISON SLOUGH CERTIFICATE 11060 & VICE-VERSA.
-  38.0 ACRES 'IS' FROM WELL 2 CERTIFICATE 33151 (PERMIT G-1484) & 38.0 ACRES 'IR' FROM POISON CREEK SLOUGH CERTIFICATE 33152 TRANSFERRED. REPLACE BY 38.0 ACRES 'IR' FROM POISON SLOUGH CERTIFICATE 11060 & VICE-VERSA.




RENEWAL DATE: 12/31/2020

THIS MAP IS FOR THE PURPOSE OF LOCATING A WATER RIGHT ONLY AND HAS NO INTENT TO PROVIDE LEGAL DIMENSIONS OR THE LOCATION OF PROPERTY LINES.

PROJECT No. 18-003
13395
PREPARED AT THE REQUEST OF:
DUNBAR SILVIES RIVER RANCH
9622 VICTOR ROAD
ANCHORAGE, AK 99515

ALL POINTS ENGINEERING & SURVEYING, INC.



P.O. BOX 767
TERREBONNE, OREGON 97760
(541) 548-5833 PH
scott@apeands.com
www.APEandS.com