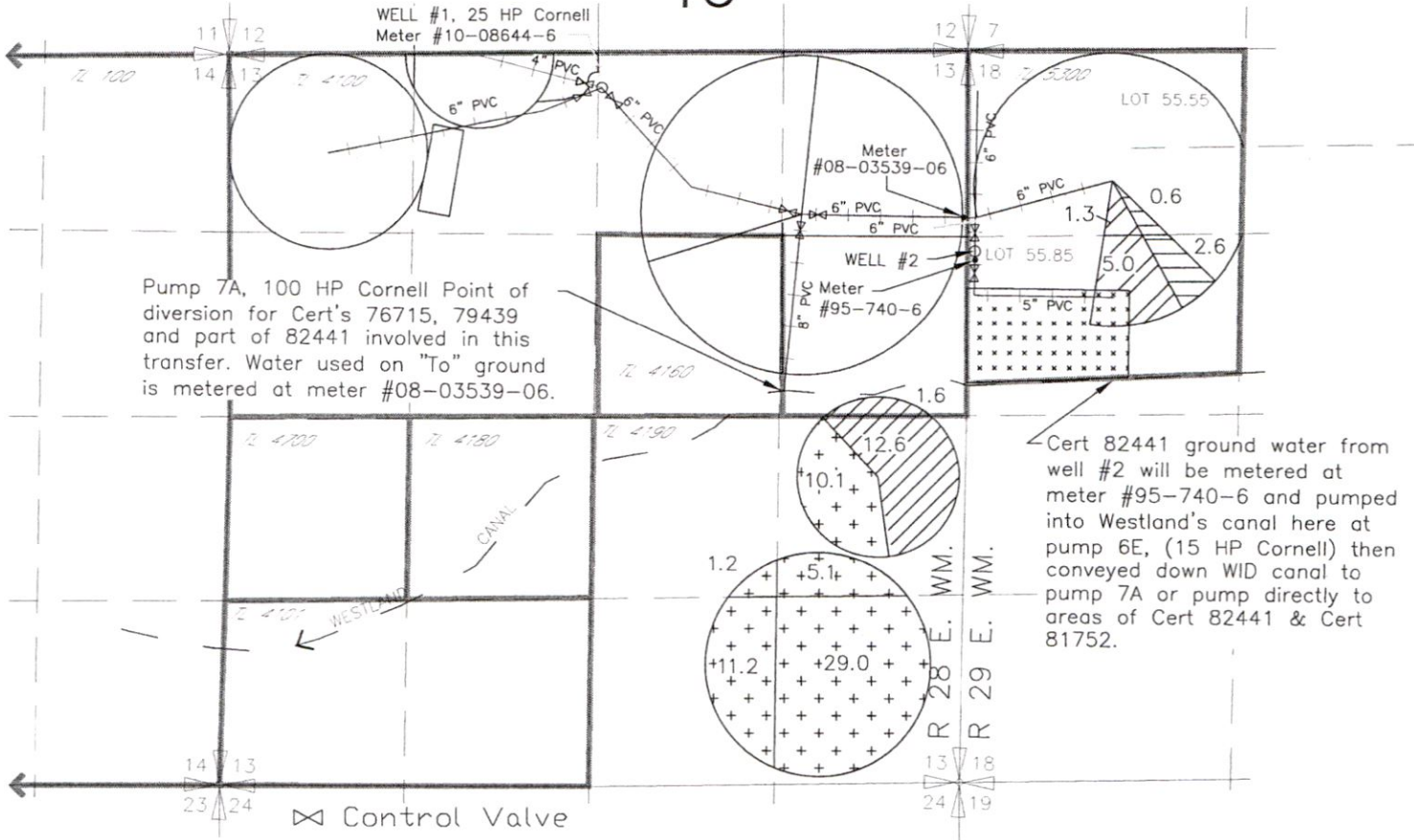


2020 WESTLAND IRRIGATION DISTRICT INDEX TRANSFER APPLICATION MAP DOUBLE M RANCH, INC

CERT'S 76715, 79439, T-9198 CERT 81752,
T-9198 CERT 76051, T-9198 CERT 79439
T3N, R 28 & 29 E, W.M.

RECEIVED
APR 02 2020
OWRD

TO

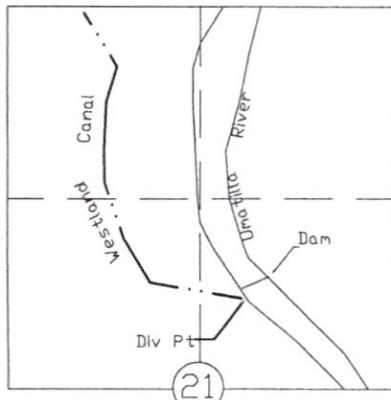


WELL #1 Located 270' South & 2540' West from the NE corner section 13, T3N, R28E, WM

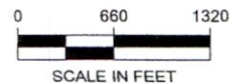
WELL #2 Located 1450' South & 3160' West from the N 1/4 corner section 18, T3N, R29E, WM

T3N., R 29E., W.M.

INDEX



| | | | |
|-------|--|---------|---|
| MAP 1 | | 6.3 ac | Primary Cert 76715 & SUPP Cert 79439 |
| MAP 2 | | 3.2 ac | T-11328 Cert 81752 |
| MAP 3 | | 14.2 ac | T-9198 CERT 76051 SUPP T-9198 CERT 79439 |
| MAP 4 | | 56.6 ac | T-9198 CERT 76050 SUPP T-9198 CERT 79439 |
| | | | NOT INVOLVED IN THIS TRANSFER |



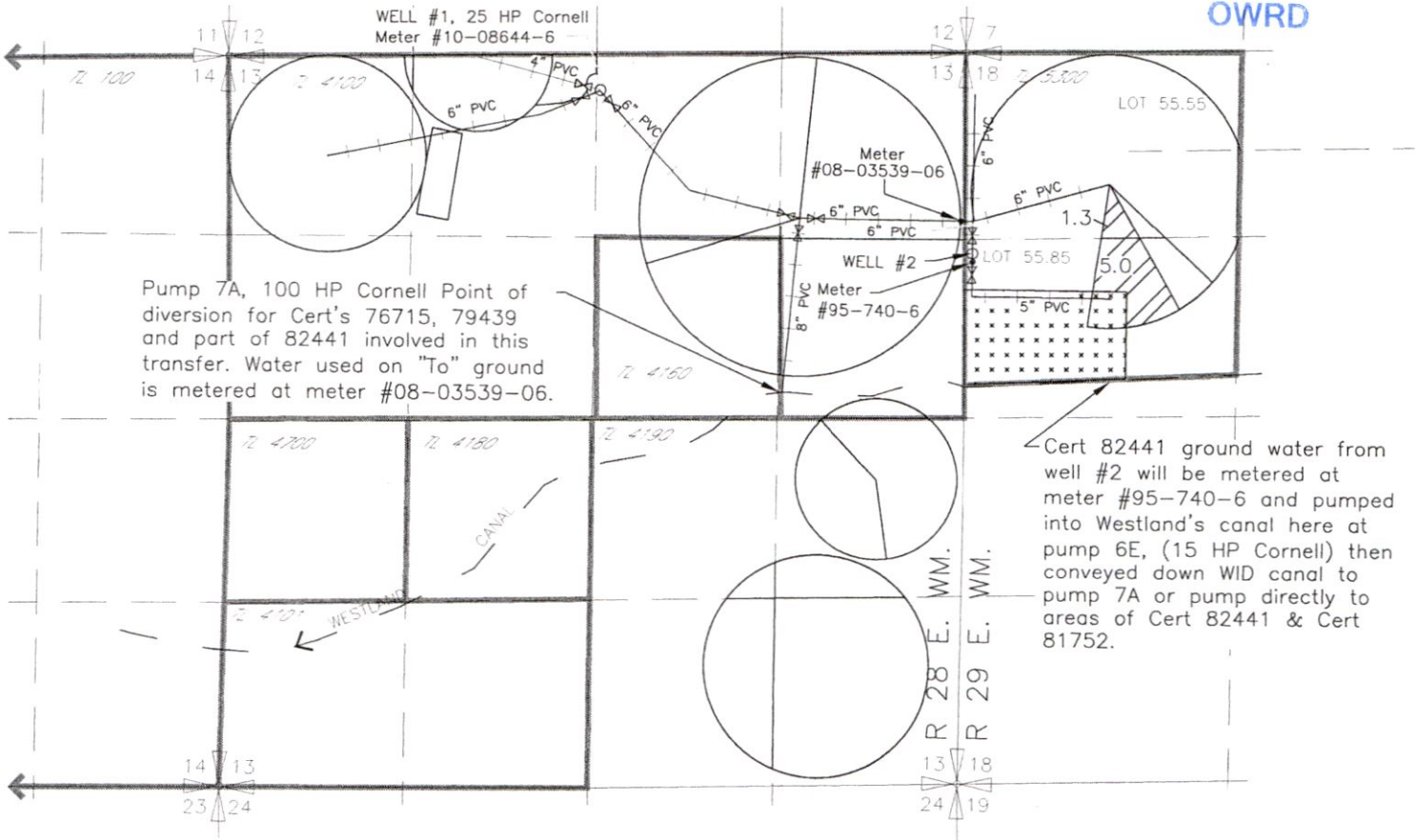
NOTE: THE PURPOSE OF THIS MAP IS TO IDENTIFY THE APPROXIMATE LOCATION OF THE WATER RIGHT. IT IS NOT INTENDED TO PROVIDE INFORMATION RELATIVE TO THE LOCATION OF PROPERTY OWNERSHIP BOUNDARY LINES.

13407

2020 WESTLAND IRRIGATION DISTRICT TRANSFER APPLICATION MAP DOUBLE M RANCH, INC CERT'S 76715, 79439 T3N, R 28 & 29 E, W.M. TO MAP 1 OF 4

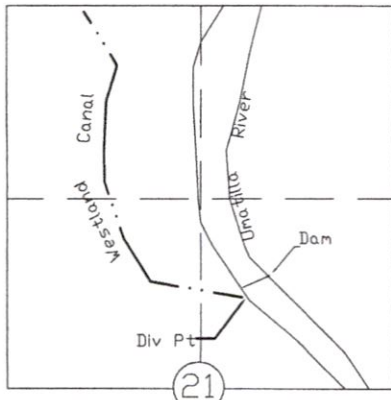
RECEIVED
APR 02 2020

OWRD

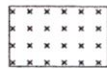


⊗ Control Valve

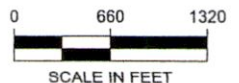
T3N., R 29E., W.M.



6.3 ac Primary Cert 76715 & Supp Cert 79439



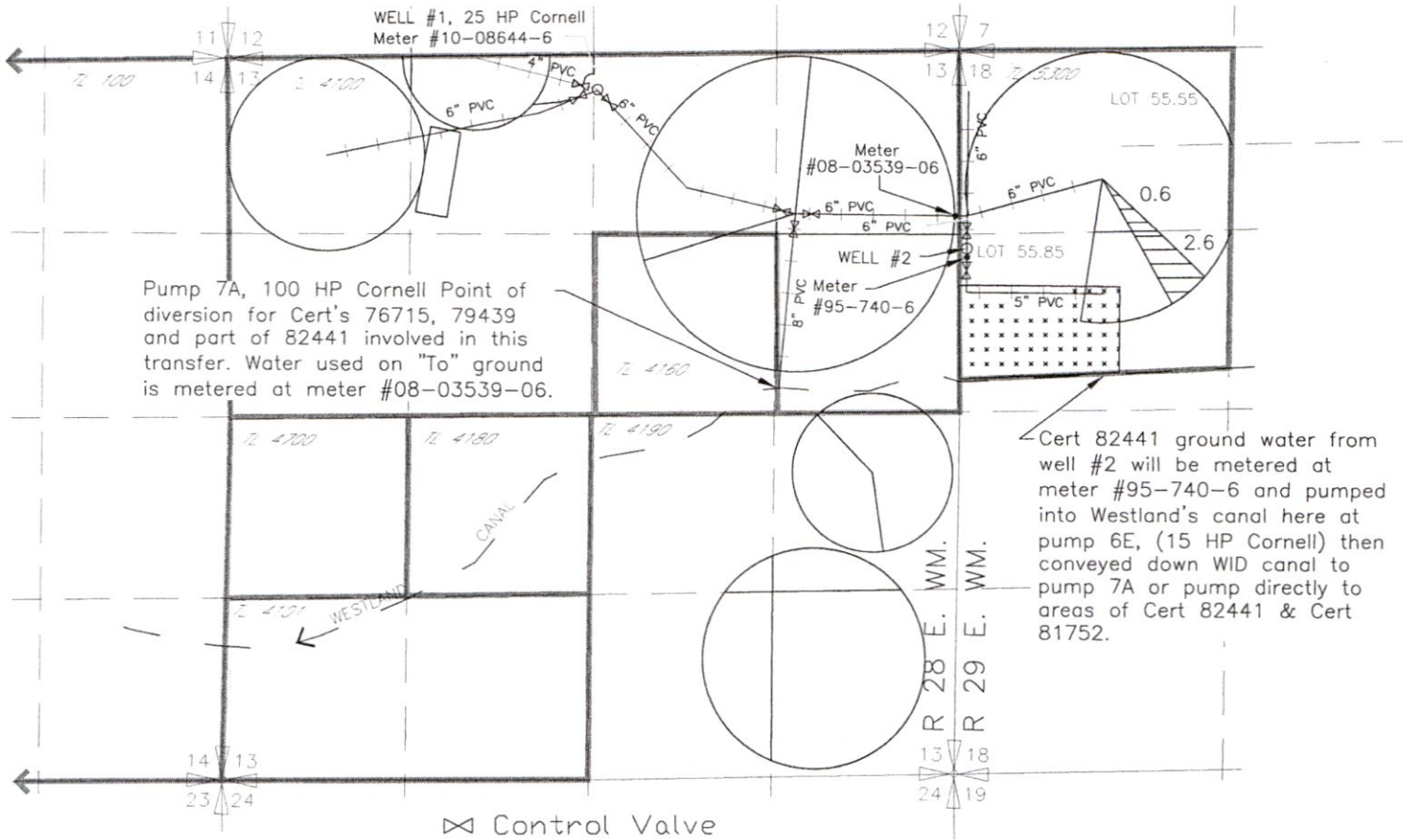
NOT INVOLVED IN THIS TRANSFER



NOTE: THE PURPOSE OF THIS MAP IS TO IDENTIFY THE APPROXIMATE LOCATION OF THE WATER RIGHT. IT IS NOT INTENDED TO PROVIDE INFORMATION RELATIVE TO THE LOCATION OF PROPERTY OWNERSHIP BOUNDARY LINES.

13407

2020 WESTLAND IRRIGATION DISTRICT TRANSFER APPLICATION MAP DOUBLE M RANCH, INC T-11328 CERT 81752 T3N, R 28 & 29 E, W.M. TO MAP 2 OF 4



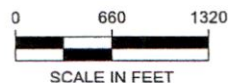
WELL #1 Located 270' South & 2540' West from the NE corner section 13, T3N, R28E, WM
 WELL #2 Located 1450' South & 3160' West from the N 1/4 corner section 18, T3N, R29E, WM

-  6.3 ac T-11328 Cert 81752
-  NOT INVOLVED IN THIS TRANSFER

RECEIVED

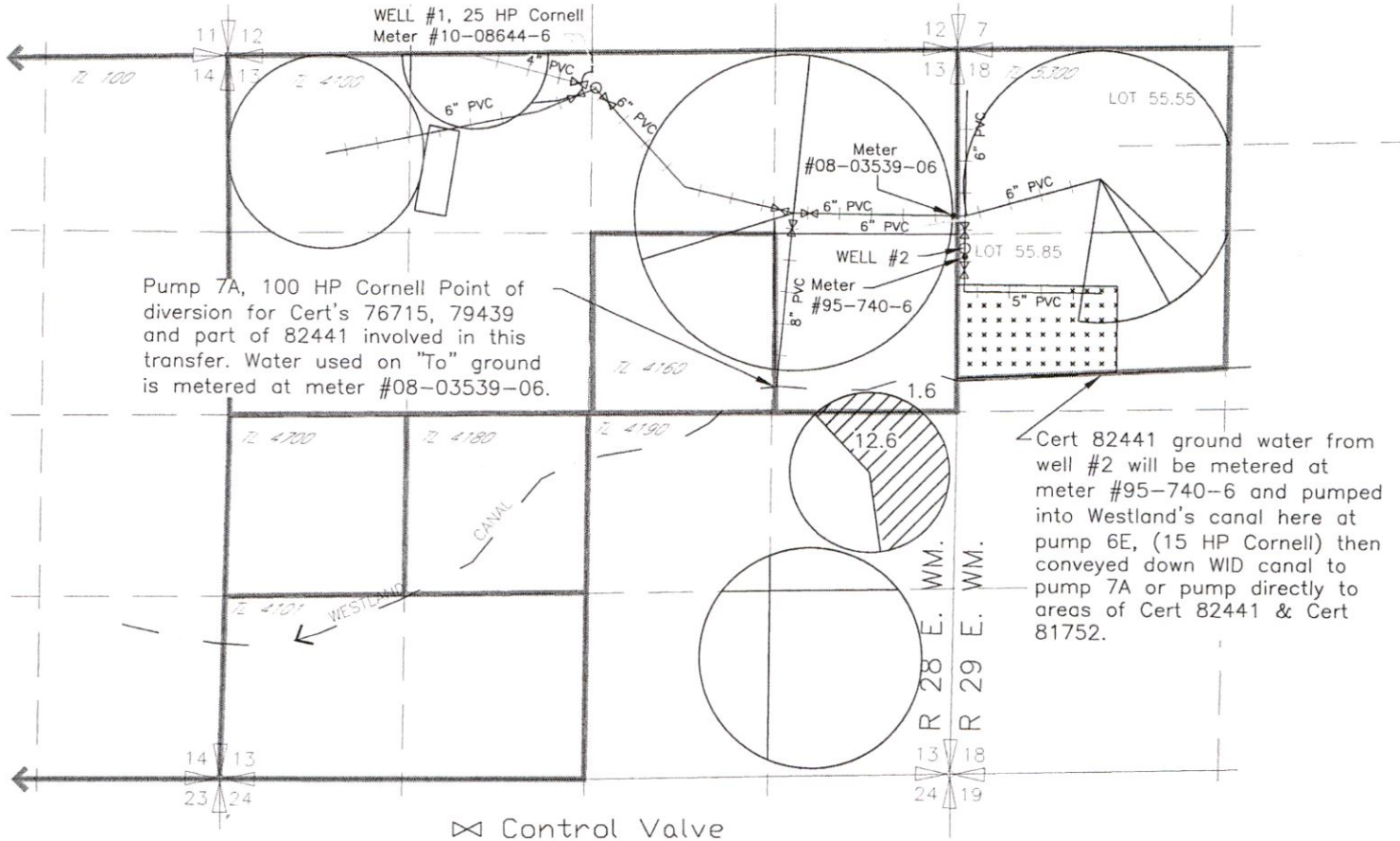
13407 APR 02 2020

OWRD



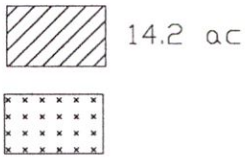
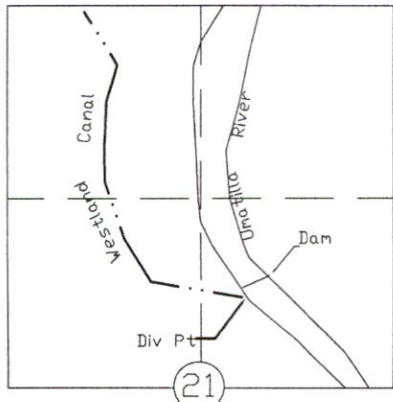
NOTE: THE PURPOSE OF THIS MAP IS TO IDENTIFY THE APPROXIMATE LOCATION OF THE WATER RIGHT. IT IS NOT INTENDED TO PROVIDE INFORMATION RELATIVE TO THE LOCATION OF PROPERTY OWNERSHIP BOUNDARY LINES.

**2020 WESTLAND IRRIGATION DISTRICT
TRANSFER APPLICATION MAP
DOUBLE M RANCH, INC
T-9198 CERT 76051, T-9198 CERT 79439
T3N, R 28 & 29 E, W.M.
TO
MAP 3 OF 4**



Cert 82441 ground water from well #2 will be metered at meter #95-740-6 and pumped into Westland's canal here at pump 6E, (15 HP Cornell) then conveyed down WID canal to pump 7A or pump directly to areas of Cert 82441 & Cert 81752.

T3N., R 29E., W.M.

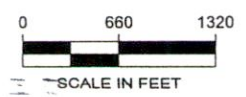


T-9198 CERT 76051
SUPP T-9198 CERT 79439

NOT INVOLVED IN THIS
TRANSFER

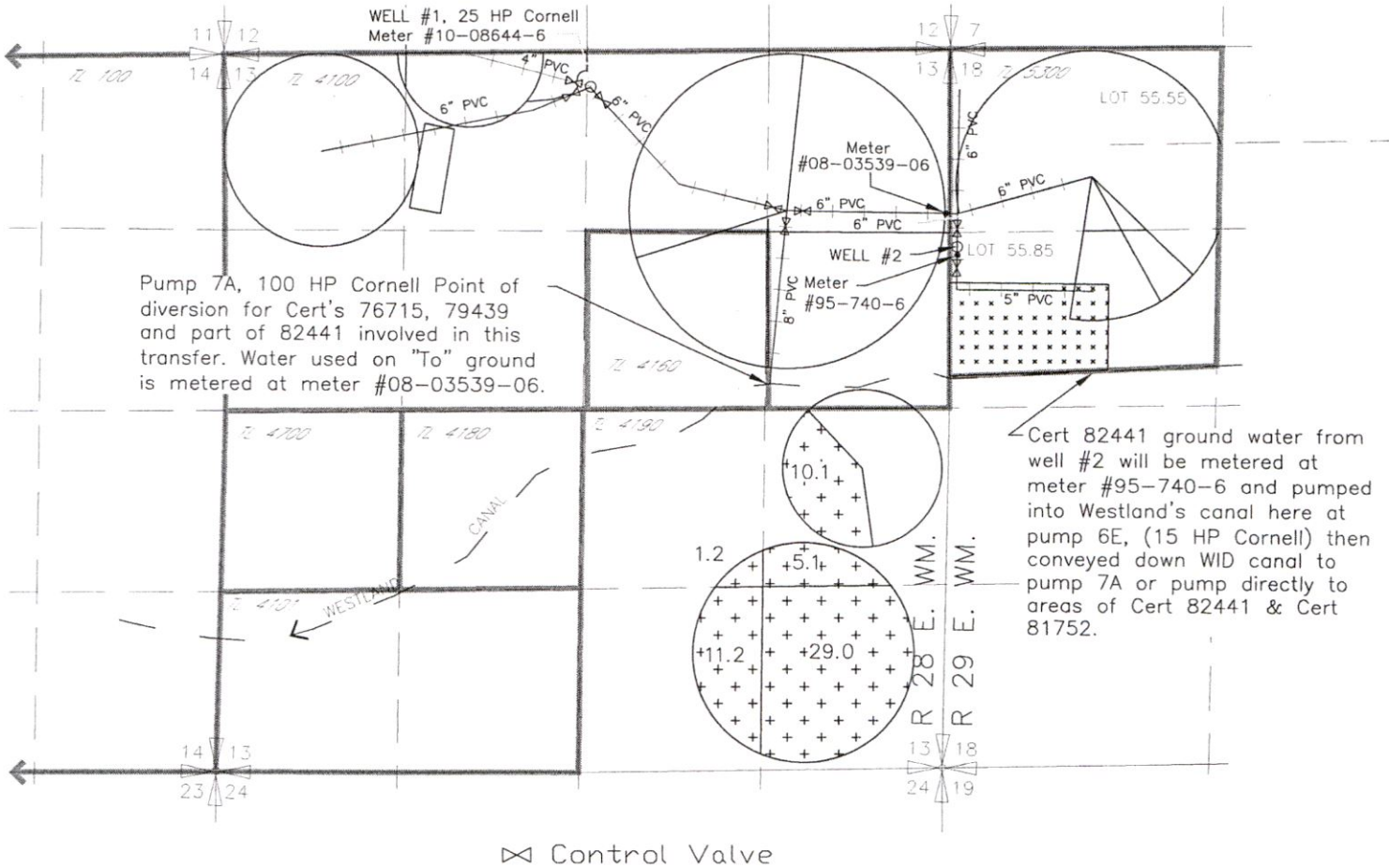
RECEIVED
APR 02 2020

OWRD
13407

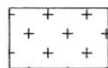
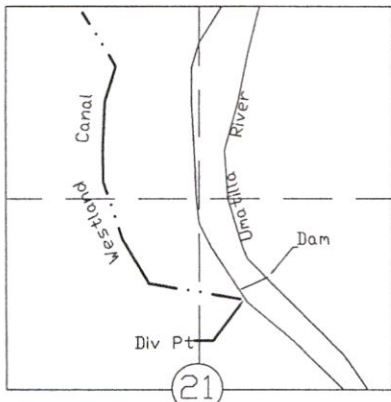


NOTE: THE PURPOSE OF THIS MAP IS TO IDENTIFY THE APPROXIMATE LOCATION OF THE WATER RIGHT. IT IS NOT INTENDED TO PROVIDE INFORMATION RELATIVE TO THE LOCATION OF PROPERTY OWNERSHIP BOUNDARY LINES.

2020 WESTLAND IRRIGATION DISTRICT TRANSFER APPLICATION MAP DOUBLE M RANCH, INC T-9198 CERT 76050, T-9198 CERT 79439 T3N, R 28 & 29 E, W.M. TO MAP 4 OF 4

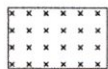


T3N., R 29E., W.M.



56.6 ac

T-9198 CERT 76050
SUPP T-9198 CERT 79439



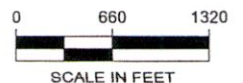
NOT INVOLVED IN THIS
TRANSFER

RECEIVED

APR 02 2020

OWRD

13407



NOTE: THE PURPOSE OF THIS MAP IS TO IDENTIFY THE APPROXIMATE LOCATION OF THE WATER RIGHT. IT IS NOT INTENDED TO PROVIDE INFORMATION RELATIVE TO THE LOCATION OF PROPERTY OWNERSHIP BOUNDARY LINES.

DRAWING: \\kww\FILES\Public\Project\30-08-016 - Porifly Water Rights Consulting\--00 Misc Engineering\Cad\052\Double M 2020 TO TR.dwg
PRINTED By: railford on 02/25/20 01:29 PM

2020 WESTLAND IRRIGATION DISTRICT INDEX TRANSFER APPLICATION MAP

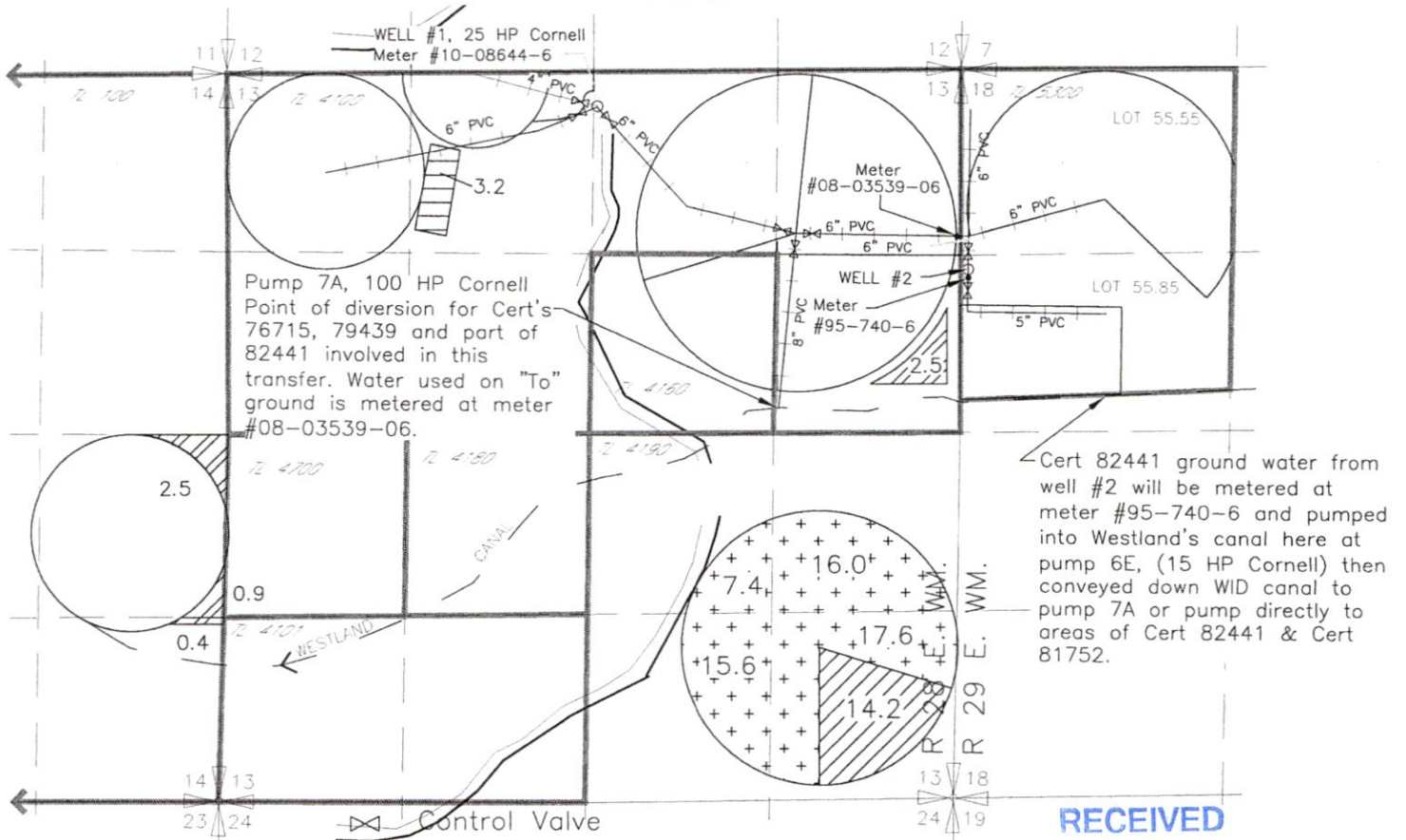
DOUBLE M RANCH, INC

CERT'S 76715, 79439, T-9198 CERT 81752,

T-9198 CERT 76051, T-9198 CERT 79439

T3N, R 28 & 29 E, W.M.

FROM



RECEIVED

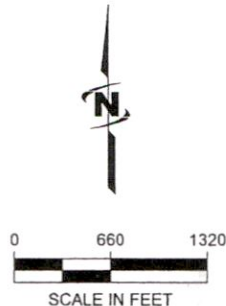
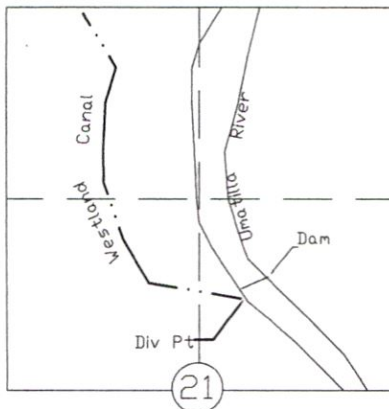
APR 02 2020

OWRD

WELL #1 Located 270' South & 2540' West from the NE corner section 13, T3N, R28E, WM

WELL #2 Located 1450' South & 3160' West from the N 1/4 corner section 18, T3N, R29E, WM

T3N, R 29E., W.M.

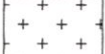


INDEX

MAP #1  6.3

MAP #2  3.2

MAP #3  14.2 ac

MAP #4  56.6 ac

Primary Cert 76715 & SUPP Cert 79439

T-11328 Cert 81752

T-9198 CERT 76051
SUPP T-9198 CERT 79439

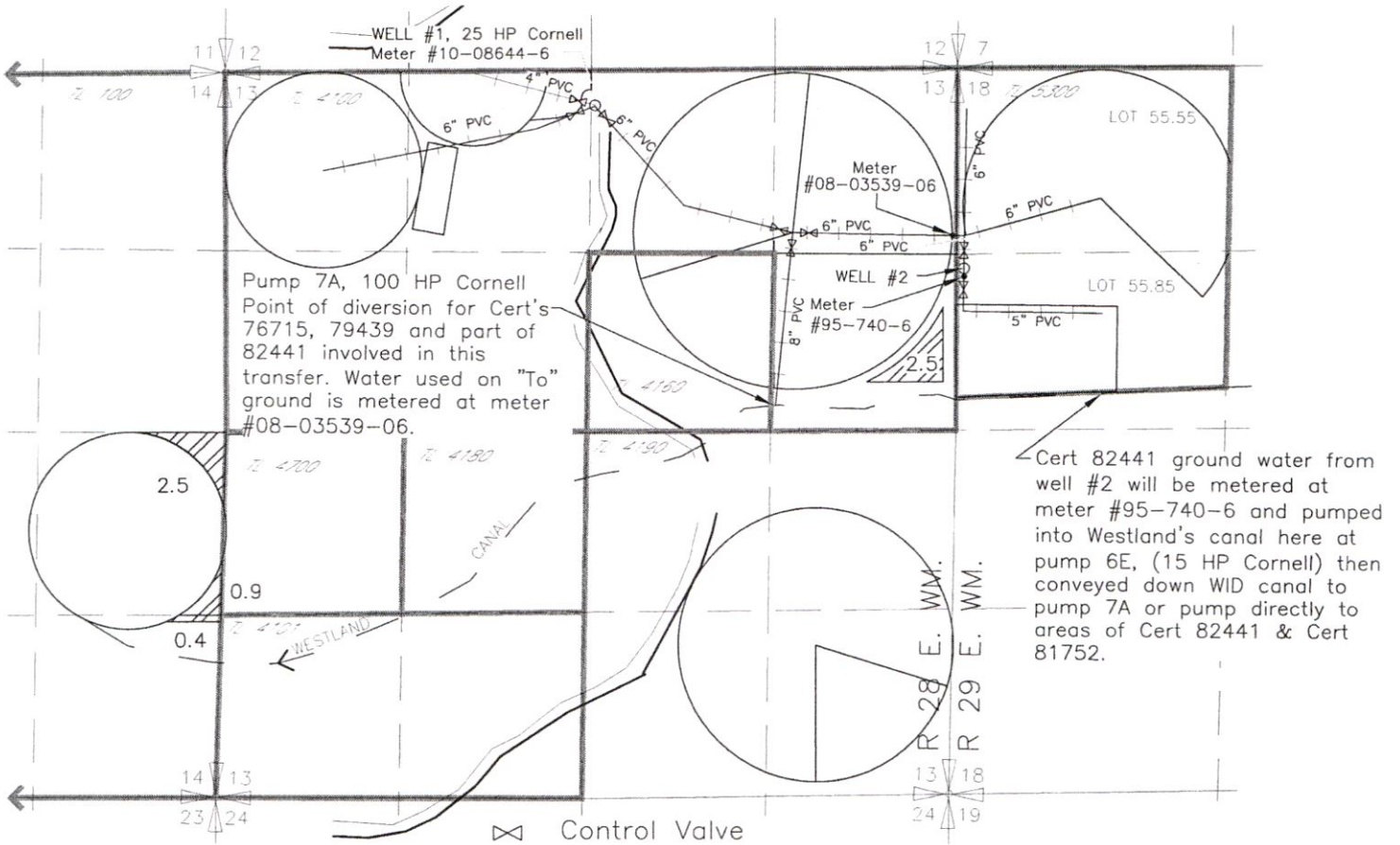
T-9198 CERT 76050
SUPP T-9198 CERT 79439

NOTE: THE PURPOSE OF THIS MAP IS TO IDENTIFY THE APPROXIMATE LOCATION OF THE WATER RIGHT. IT IS NOT INTENDED TO PROVIDE INFORMATION RELATIVE TO THE LOCATION OF PROPERTY OWNERSHIP BOUNDARY LINES.

DRAWING: \\w\FILES\Public\Project\30-08-016 - Fortry, Water Rights Consulting\00 Misc Engineering\Cad\050\Double M 2020 FROM TR.dwg
PRINTED BY: railard on 02/25/20 01:18 PM

13407

2020 WESTLAND IRRIGATION DISTRICT TRANSFER APPLICATION MAP DOUBLE M RANCH, INC CERT'S 76715, 79439 T3N, R 28 & 29 E, W.M. FROM MAP 1 OF 4

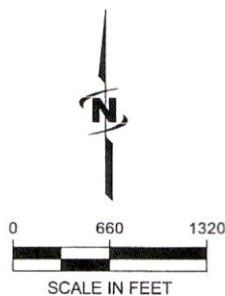
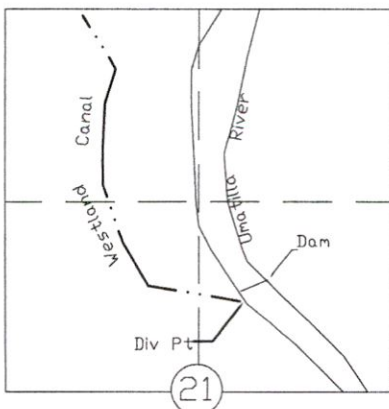


RECEIVED

APR 02 2020

OWRD

T3N., R 29E., W.M.



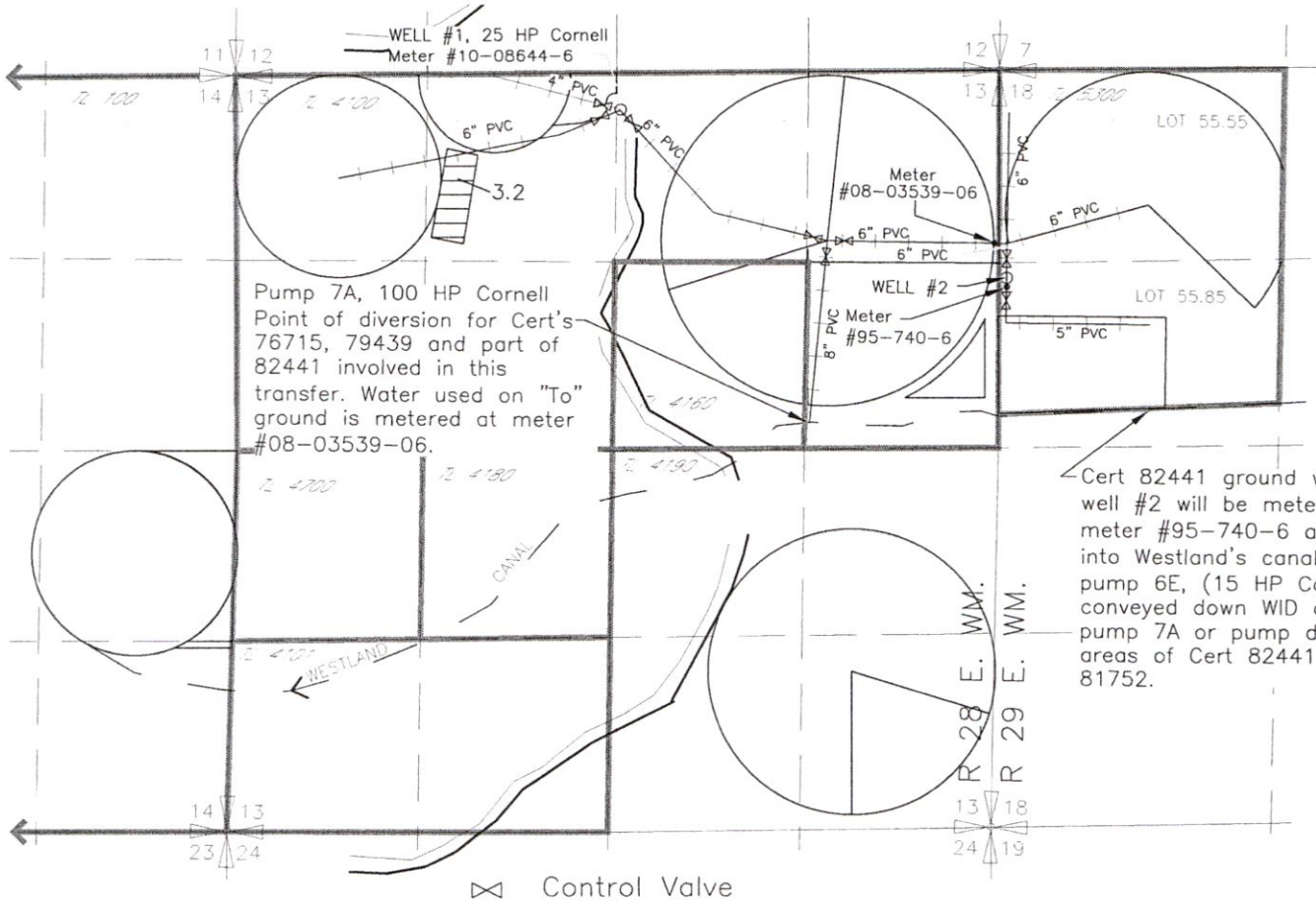
 5.9 ac

Primary T-11328 Cert
76715 & SUPP
T-11328 Cert 79439

NOTE: THE PURPOSE OF THIS MAP IS TO IDENTIFY THE APPROXIMATE LOCATION OF THE WATER RIGHT. IT IS NOT INTENDED TO PROVIDE INFORMATION RELATIVE TO THE LOCATION OF PROPERTY OWNERSHIP BOUNDARY LINES.

13407

2020 WESTLAND IRRIGATION DISTRICT TRANSFER APPLICATION MAP DOUBLE M RANCH, INC T-11328 CERT 81752 T3N, R 28 & 29 E, W.M. FROM MAP 2 OF 4



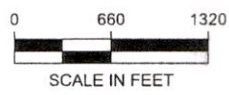
Pump 7A, 100 HP Cornell
Point of diversion for Cert's
76715, 79439 and part of
82441 involved in this
transfer. Water used on "To"
ground is metered at meter
#08-03539-06.

Cert 82441 ground water from
well #2 will be metered at
meter #95-740-6 and pumped
into Westland's canal here at
pump 6E, (15 HP Cornell) then
conveyed down WID canal to
pump 7A or pump directly to
areas of Cert 82441 & Cert
81752.

⊗ Control Valve

WELL #1 Located 270' South & 2540' West from the NE corner section 13, T3N, R28E, WM
WELL #2 Located 1450' South & 3160' West from the N 1/4 corner section 18, T3N, R29E, WM

5.1 ac T-11328 Cert 81752

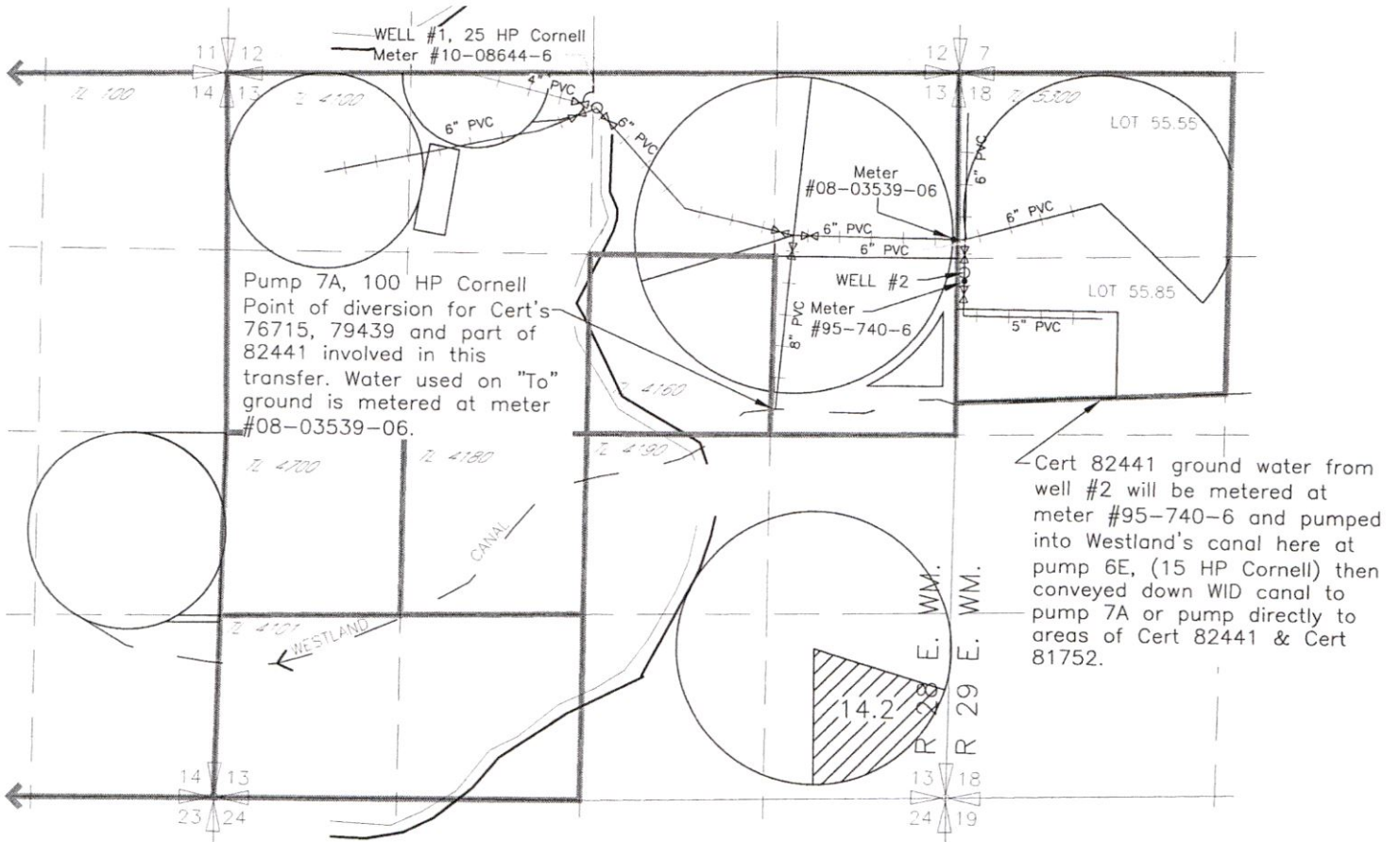


RECEIVED
APR 02 2020
OWRD

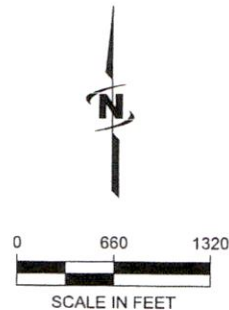
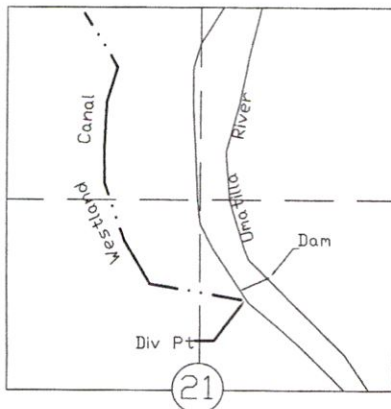
13407

NOTE: THE PURPOSE OF THIS MAP IS TO IDENTIFY THE APPROXIMATE LOCATION OF THE WATER RIGHT. IT IS NOT INTENDED TO PROVIDE INFORMATION RELATIVE TO THE LOCATION OF PROPERTY OWNERSHIP BOUNDARY LINES.
DRAWING: \\K:\FILES\Public\Project\30-08-016 - Farley Water Rights Consulting\00 Misc Engineering\Cad\052\Double M.2020 FROM TR.dwg
PRINTED By: westland on 02/25/20 01:32 PM

2020 WESTLAND IRRIGATION DISTRICT TRANSFER APPLICATION MAP DOUBLE M RANCH, INC T-9198 CERT 76051, T-9198 CERT 79439 T3N, R 28 & 29 E, W.M. FROM MAP 3 OF 4



T3N., R 29E., W.M.



 14.2 ac

T-9198 CERT 76051
SUPP T-9198 CERT
79439

RECEIVED

APR 02 2020

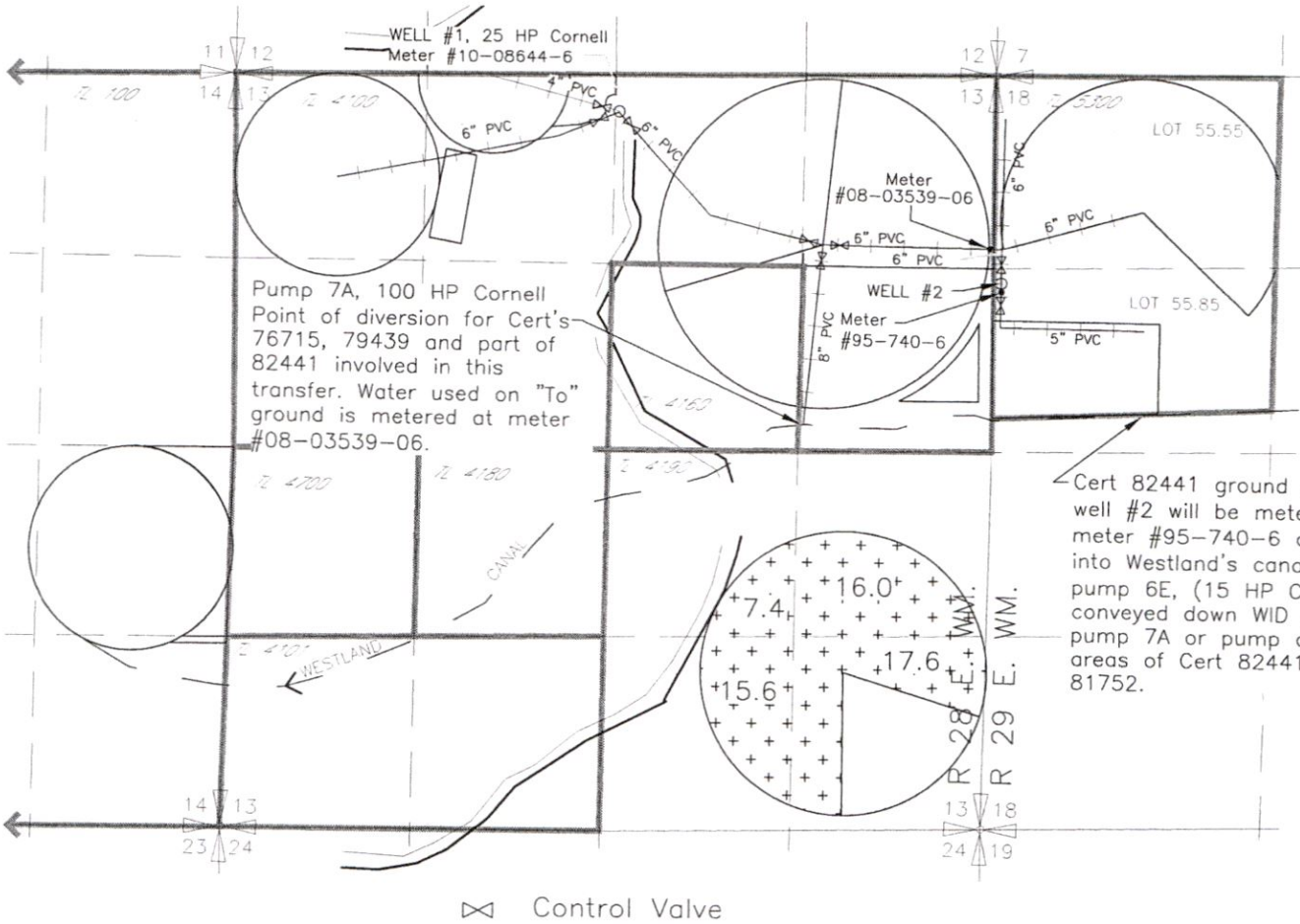
OWRD

13407

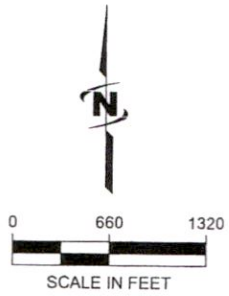
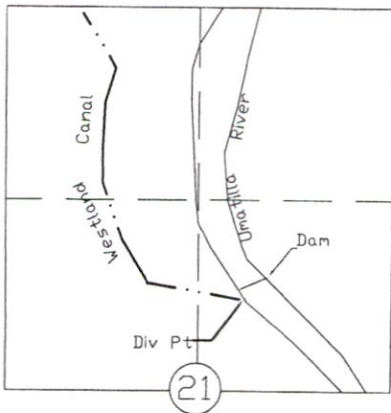
NOTE: THE PURPOSE OF THIS MAP IS TO IDENTIFY THE APPROXIMATE LOCATION OF THE WATER RIGHT. IT IS NOT INTENDED TO PROVIDE INFORMATION RELATIVE TO THE LOCATION OF PROPERTY OWNERSHIP BOUNDARY LINES.

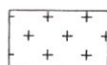
DRAWING: \\K:\FILES\Public\Project\130-08-016 - Partly Water Rights Consulting\00 Misc Engineering\Cad\052\Double M.2020 FROM TR.dwg
PRINTED By: railford on 02/25/20 01:32 PM

2020 WESTLAND IRRIGATION DISTRICT TRANSFER APPLICATION MAP DOUBLE M RANCH, INC T-9198 CERT 76050, T-9198 CERT 79439 T3N, R 28 & 29 E, W.M. FROM MAP 4 OF 4



T3N., R 29E., W.M.



 56.6 ac T-9198 CERT 76050
 SUPP T-9198 CERT 79439

RECEIVED
APR 02 2020
OWRD

NOTE: THE PURPOSE OF THIS MAP IS TO IDENTIFY THE APPROXIMATE LOCATION OF THE WATER RIGHT. IT IS NOT INTENDED TO PROVIDE INFORMATION RELATIVE TO THE LOCATION OF PROPERTY OWNERSHIP BOUNDARY LINES.

13407