
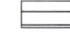


Duncan Family Trust Map of 2020 Drought Transfer Permit G-15547

T 40 & 41 S, R 10 & 11 E
Map 1 of 2

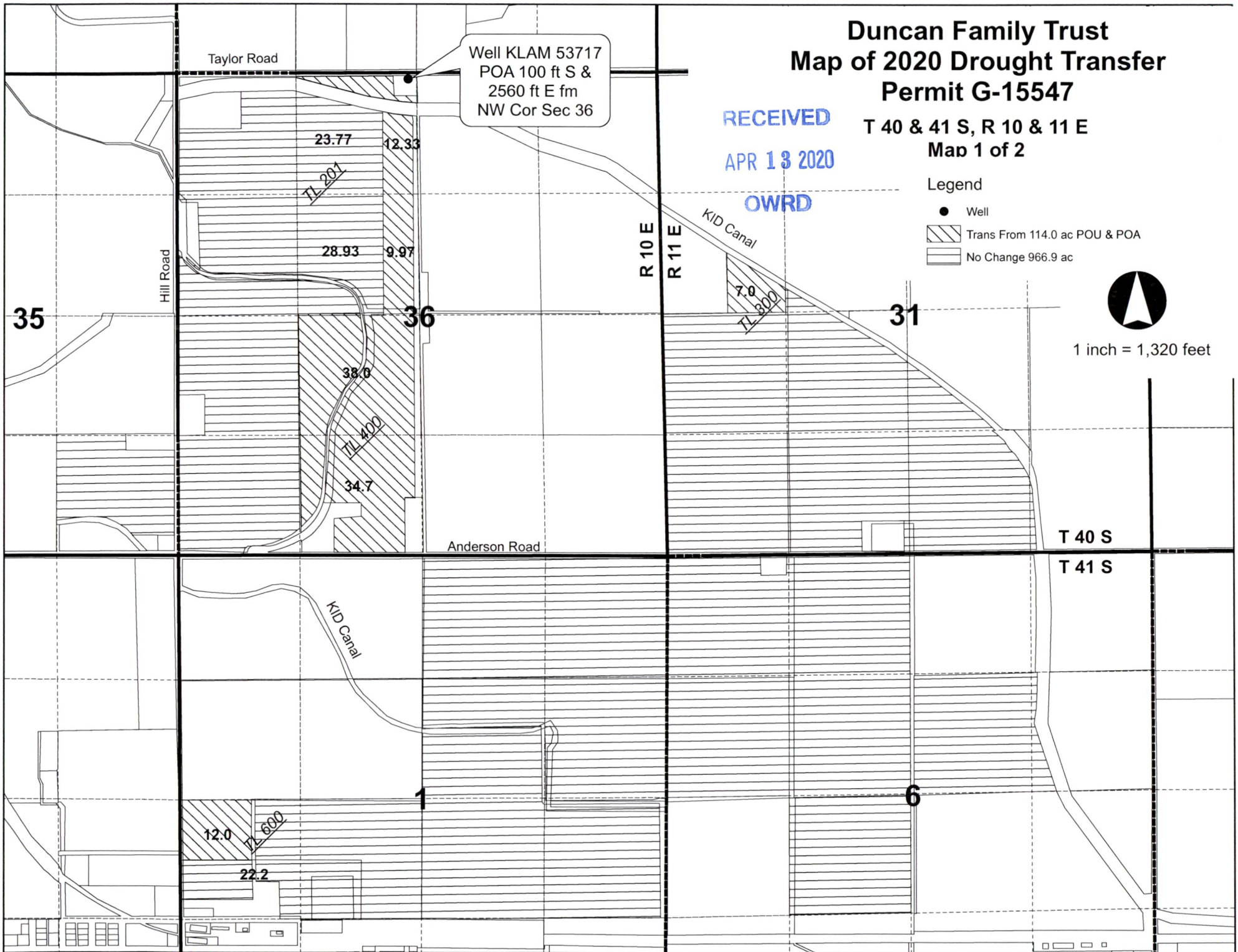
RECEIVED
APR 13 2020
OWRD

Legend

- Well
-  Trans From 114.0 ac POU & POA
-  No Change 966.9 ac



1 inch = 1,320 feet

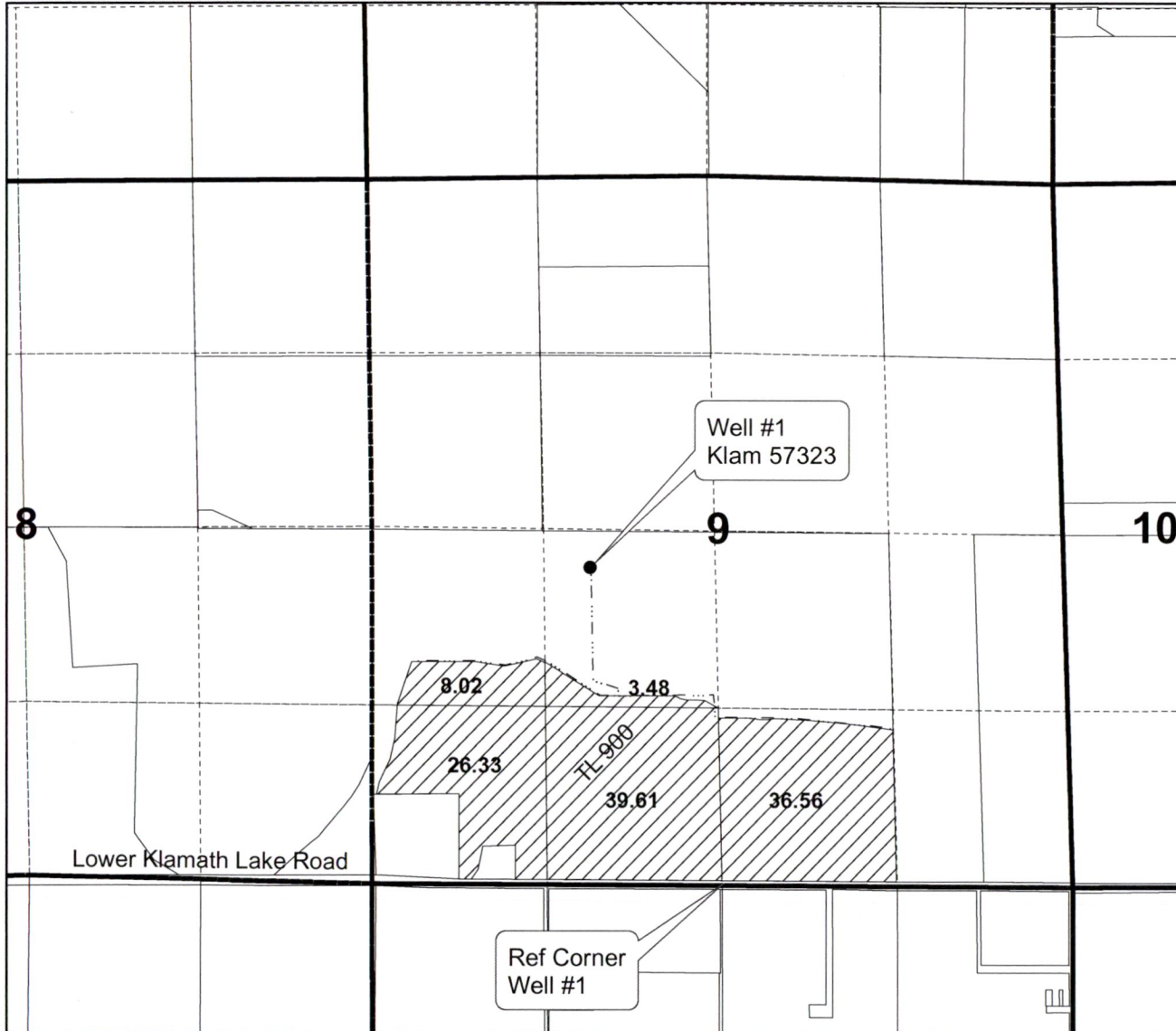


Duncan Family Trust Map of 2020 Drought Transfer Permit G-15547

T 41 S, R 10 E
Section 9

Map 2 of 2

RECEIVED
APR 13 2020
OWRD



Well #1: NESW Sec 9, N 22° 48' W 2606.2 ft
Fm the S ¼ Cor. Sec 9

Note: the location of the well is as it appears on
water right certificate 27303

Legend

- Well
- Pipeline
- ▨ Transfer TO 114.0 ac



1 inch = 1,320 feet

Well KLAM 53717
POA 100 ft S &
2560 ft E fm
NW Cor Sec 36


RECEIVED
APR 13 2020
OWRD

Proof of Use Map

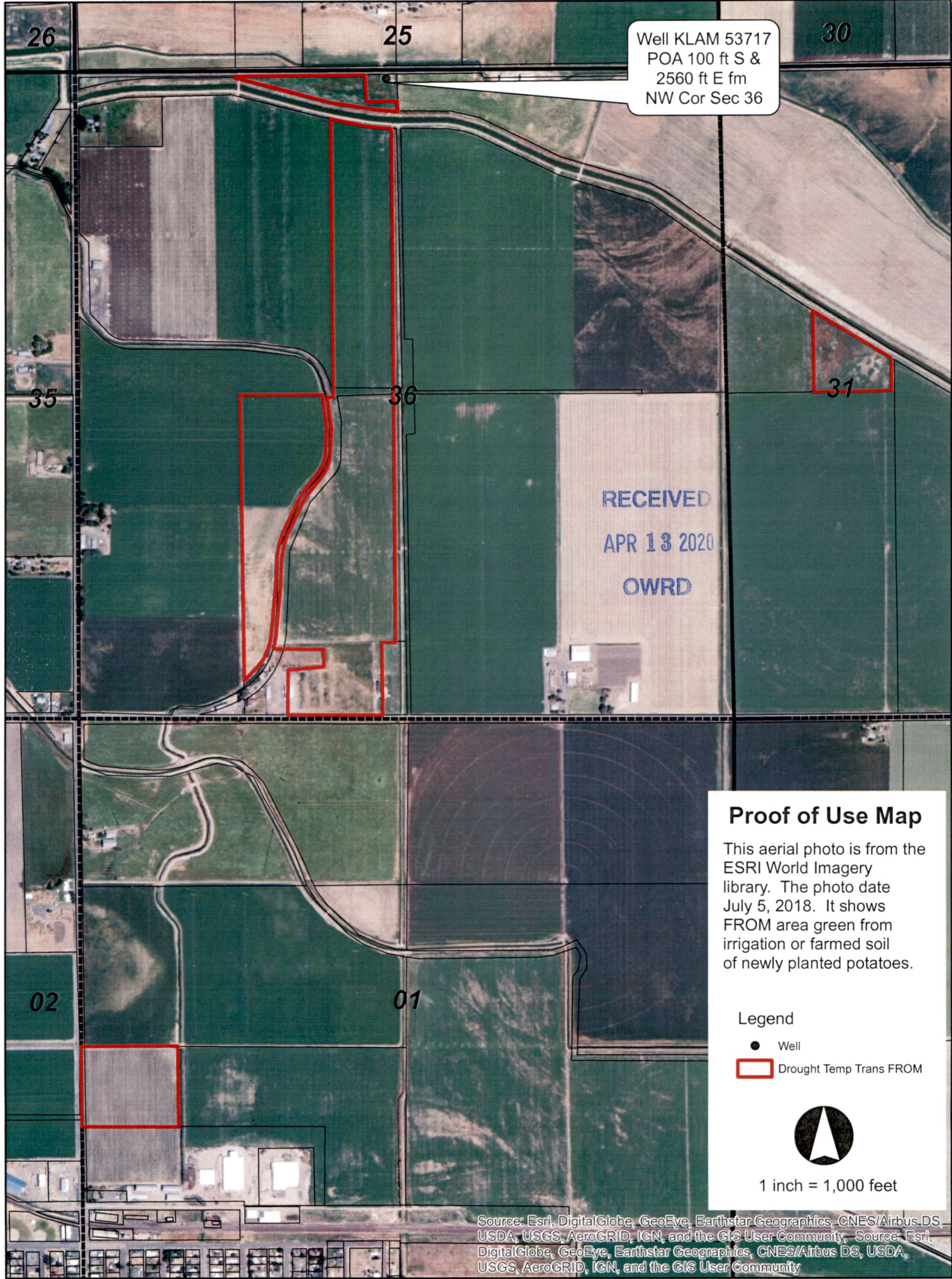
This aerial photo is from the ESRI World Imagery library. The photo date July 5, 2018. It shows FROM area green from irrigation or farmed soil of newly planted potatoes.

Legend

- Well
- Drought Temp Trans FROM



1 inch = 1,000 feet



Source: Esri, DigitalGlobe, GeoEye, Earthstar Geographics, CNES/Airbus DS, USDA, USGS, AeroGRID, IGN, and the GIS User Community. Source: Esri, DigitalGlobe, GeoEye, Earthstar Geographics, CNES/Airbus DS, USDA, USGS, AeroGRID, IGN, and the GIS User Community

KLAM 53717

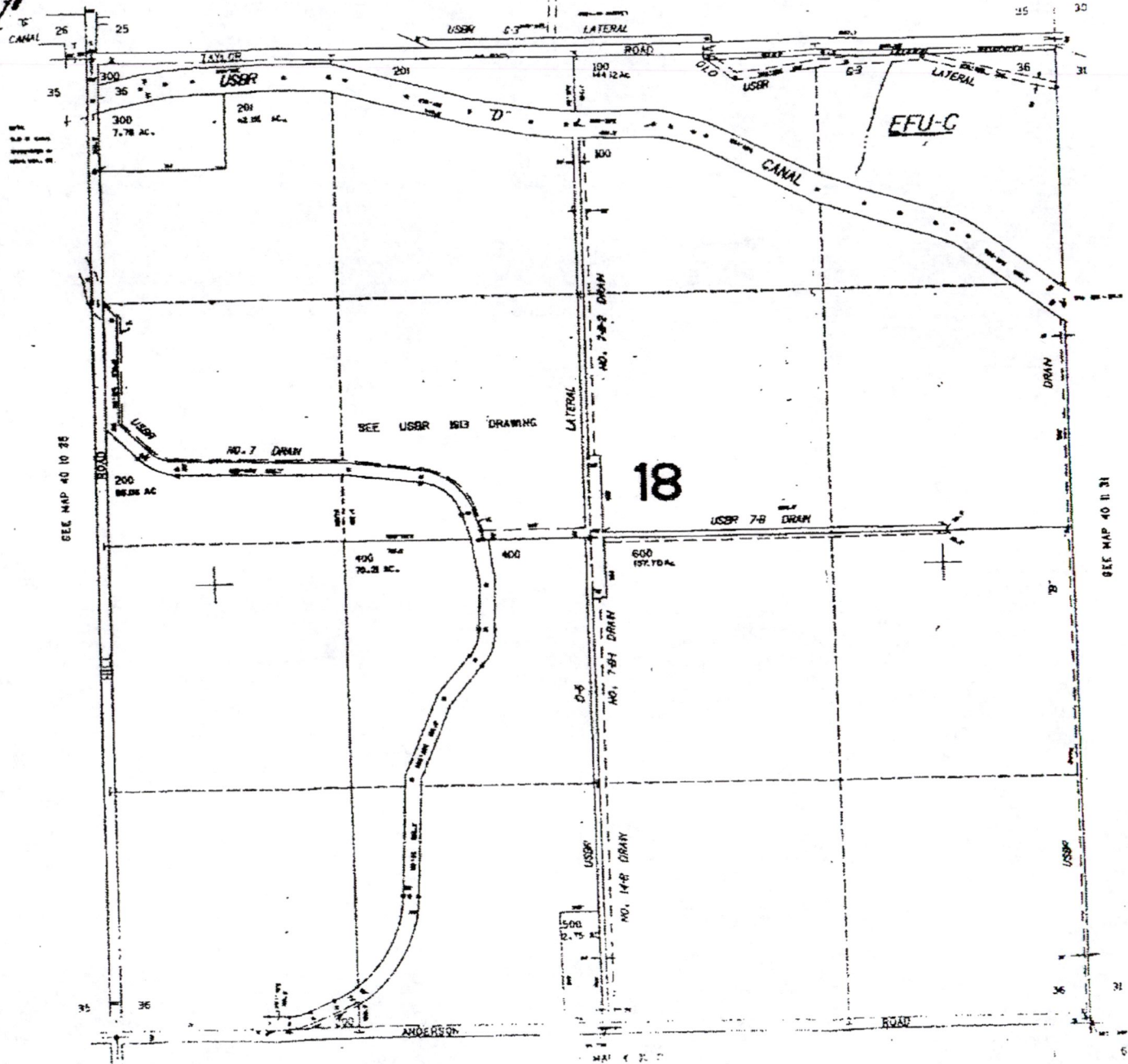
RECEIVED
APR 13 2020
OWRD

THIS MAP WAS PREPARED FOR
ASSESSMENT PURPOSE ONLY.

KLAMATH COUNTY

-400-

SEE MAP 40 10 25



SEE MAP 40 10 25

SEE USER 1613 DRAWING

18

SEE MAP 40 11 31

M.D.000