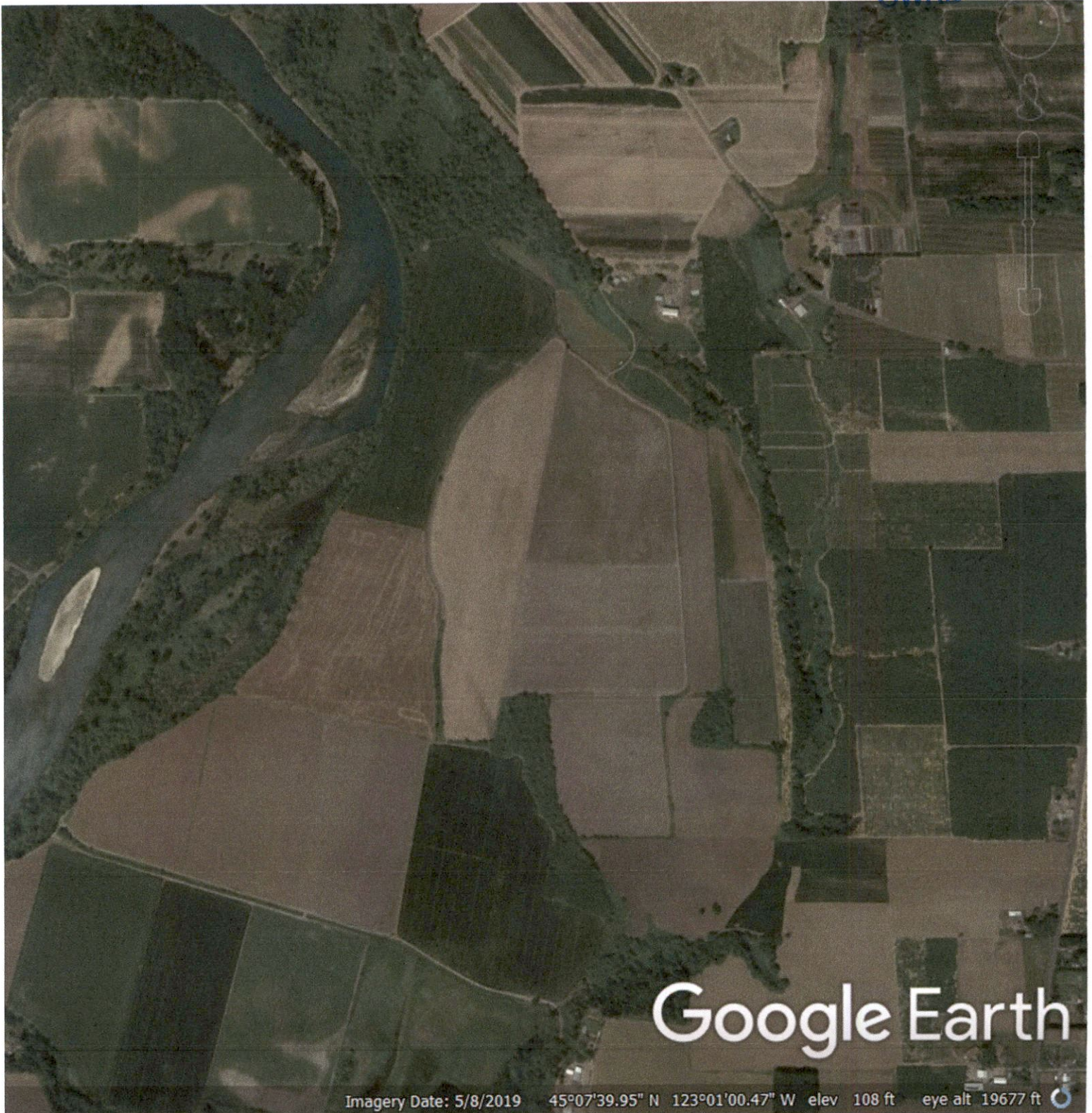


RECEIVED

APR 09 2020

OWRD



Imagery Date: 5/8/2019 45°07'39.95" N 123°01'00.47" W elev 108 ft eye alt 19677 ft

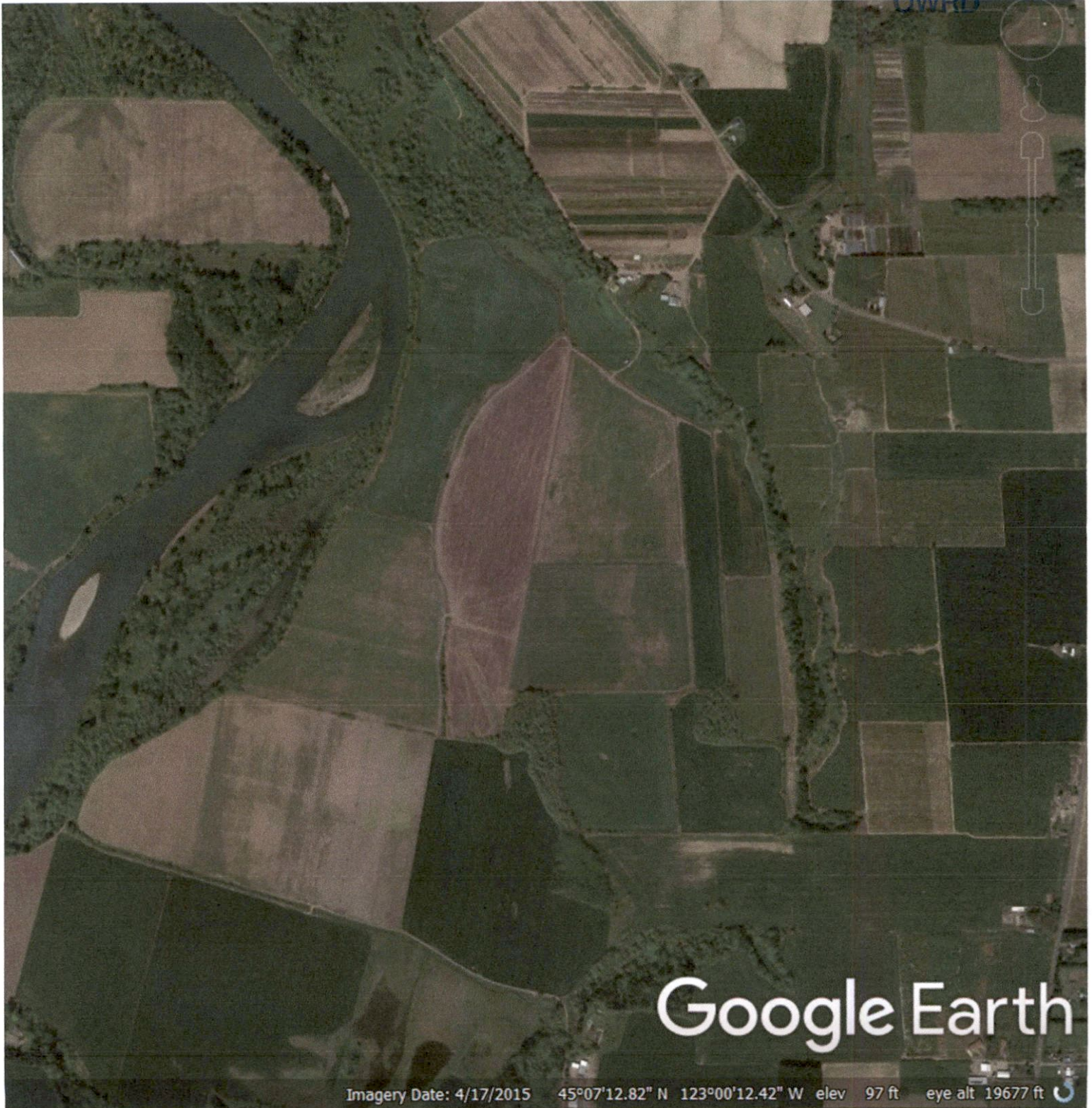
13413



RECEIVED

APR 09 2020

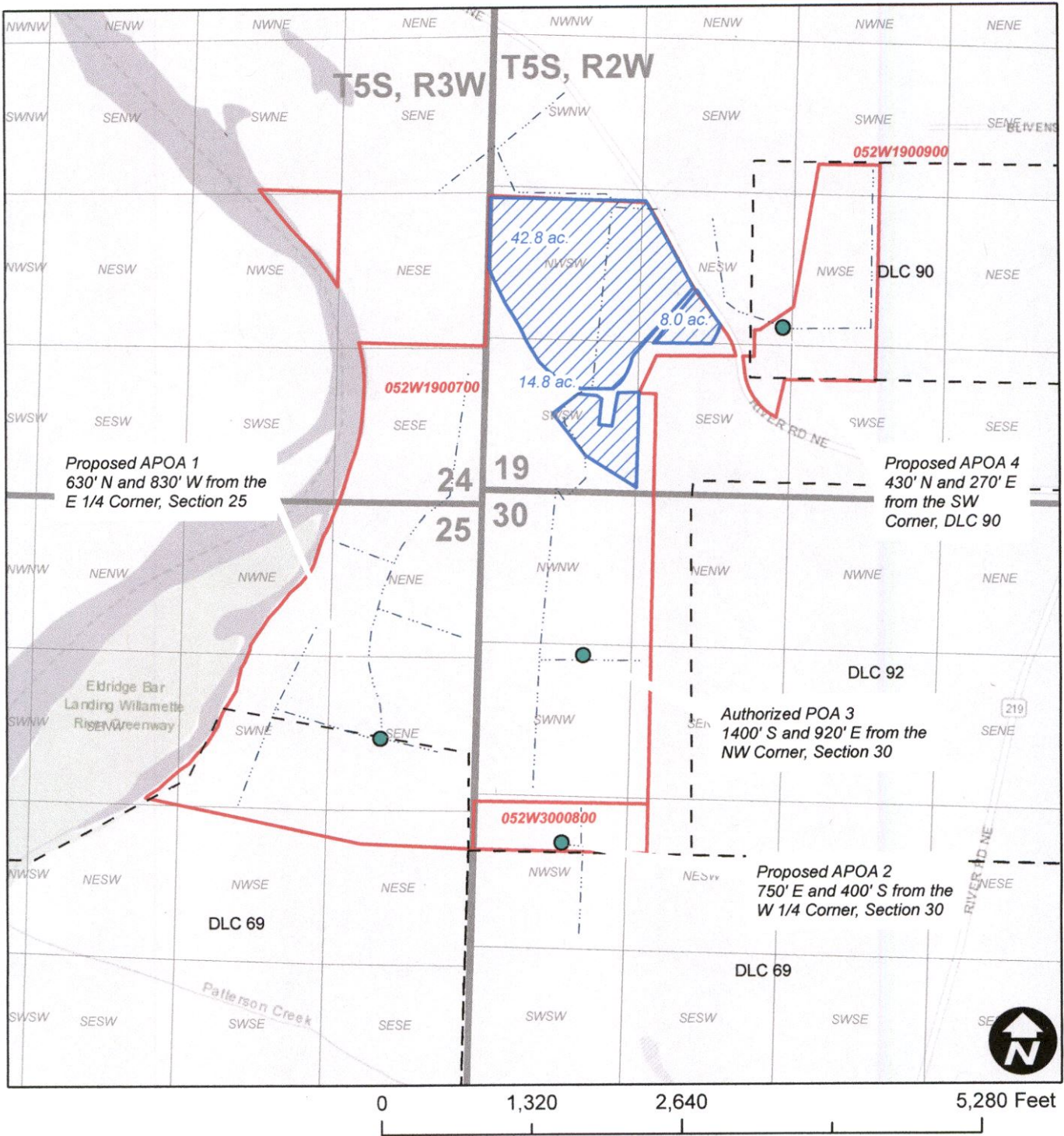
OWRD







13413

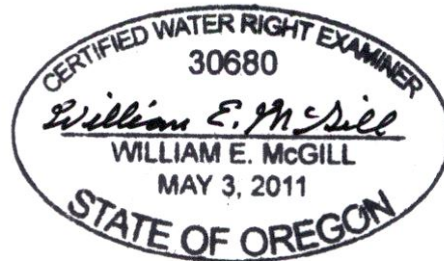


# Jane Stockfleth LLC Transfer Application - Cert. 48060



## Legend

-  Cert. 48060
-  Taxlot
-  Mainline
-  DLC



RECEIVED  
APR 09 2020

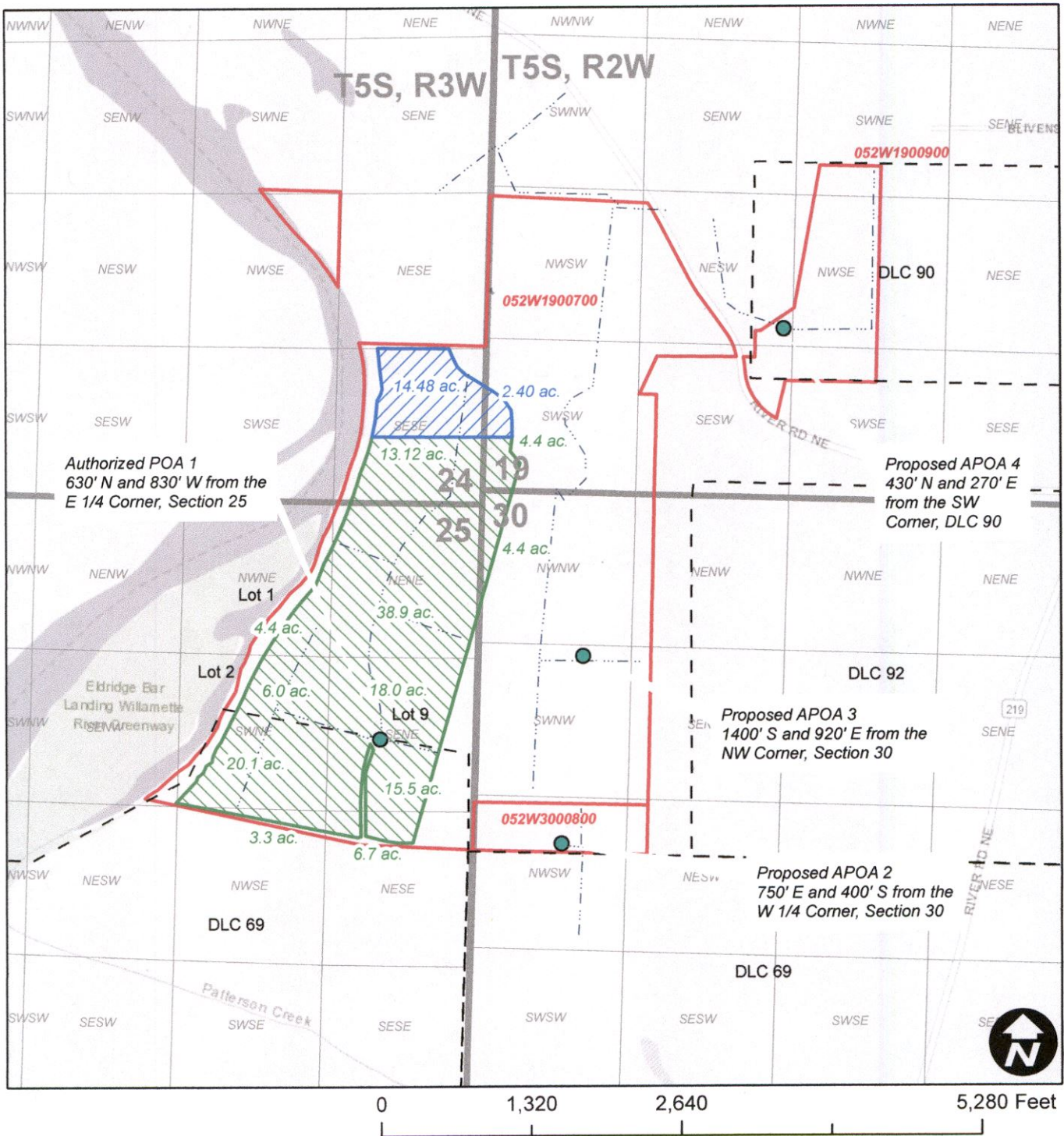
EXPIRES: 12/31/2020

OWRD  
13413





# Jane Stockfleth LLC Transfer Application - Cert. 48059








Authorized POA 1  
630' N and 830' W from the  
E 1/4 Corner, Section 25

Proposed APOA 4  
430' N and 270' E from the  
SW Corner, DLC 90

Proposed APOA 3  
1400' S and 920' E from the  
NW Corner, Section 30

Proposed APOA 2  
750' E and 400' S from the  
W 1/4 Corner, Section 30

## Legend

-  Cert. 48059 IR
-  Cert. 48059 IS
-  Taxlot
-  DLC
-  Mainline

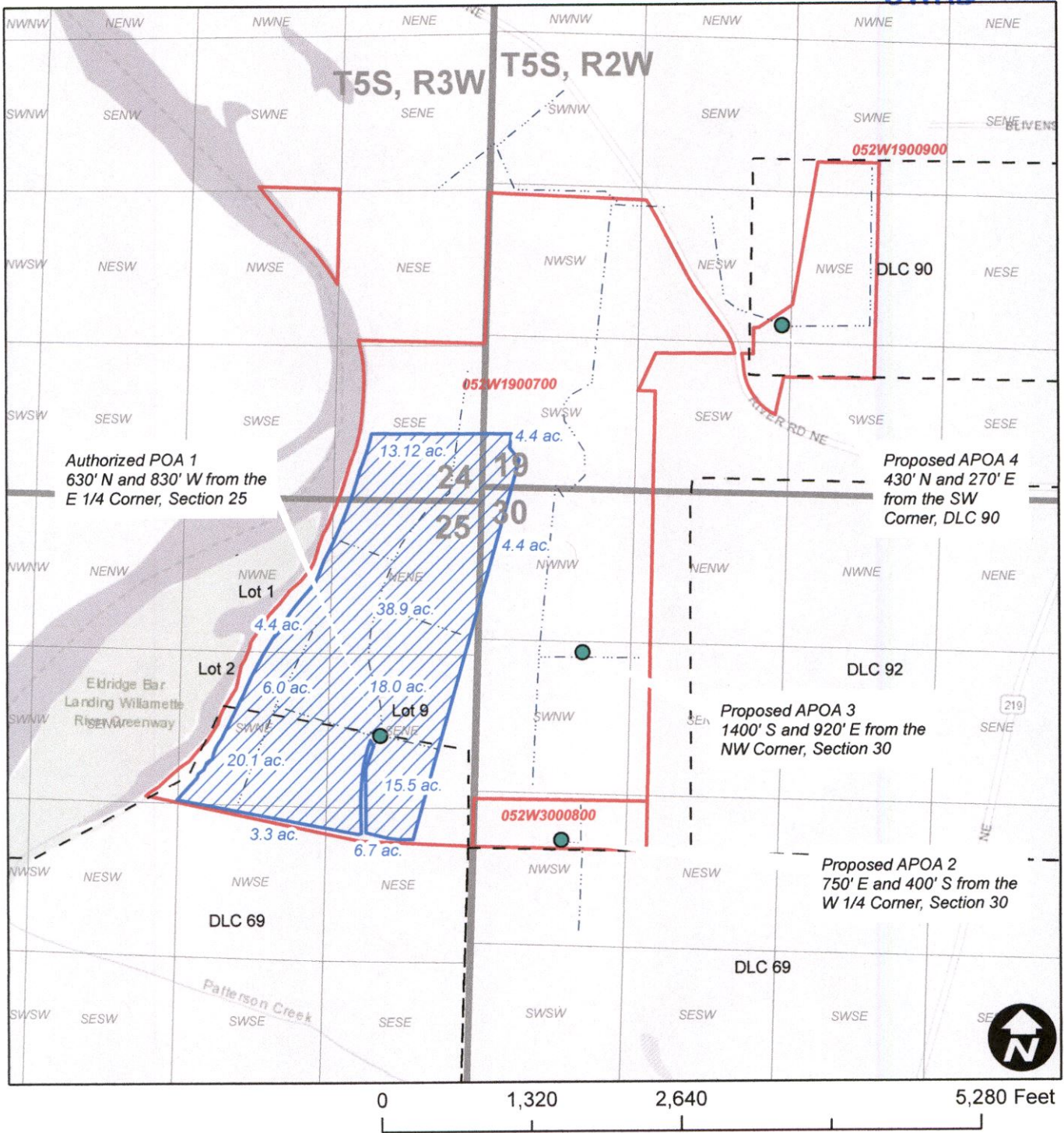


EXPIRES: 12/31/2020 **13413**





RECEIVED  
APR 09 2020  
OWRD

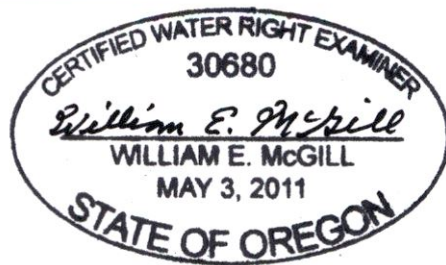


# Jane Stockfleth LLC Transfer Application - Cert. 33555



### Legend

-  Cert. 33555
-  Taxlot
-  Mainline
-  DLC



EXPIRES: 12/31/2020

13413

