

REVISED 4-7-11
THIS MAP WAS PREPARED FOR
ASSESSMENT PURPOSE ONLY

SECTION 06 T.41S. R12E. WM.
KLAMATH COUNTY
T-400

41 12 06

RECEIVED

MAY 1 1 2020

OWRPD

CANCELLED NO.
1200
1300

Map 1 of 2

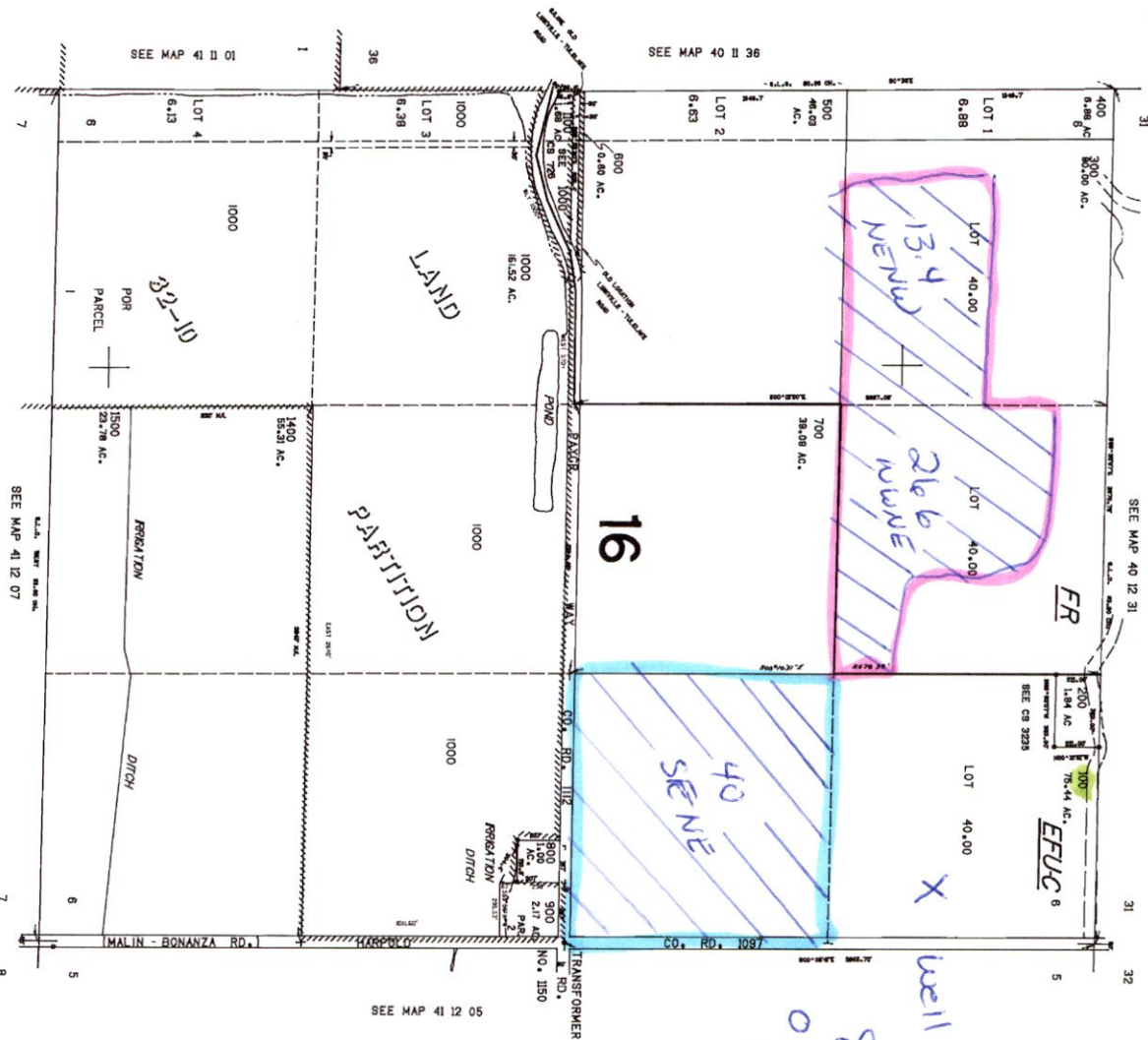
THIS R12E Sec 6

FROM LAND
TAX LOT 100

TO LAND
TAX LOT 300

Scale
1" = 880'

NORTH



13436

40.000

138,000

41 12 06

RECEIVED
MAY 11 2020

OWRD

Map 2 of 2

