

Rogue River Valley Irrigation District

Final Proof Map Map



Located in SE 1/4 SE 1/4 SEC 04 T.37S. R.2 W.W.M.
Tax Lot T37S R2W 04 3200 -0.9ac

To: Kinderman



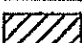
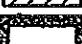
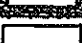
Certificates
P85288
S80575
S80576
S86876
S85877

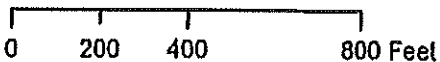
RRVID #17-01

RECEIVED

APR 29 2020

OWRD

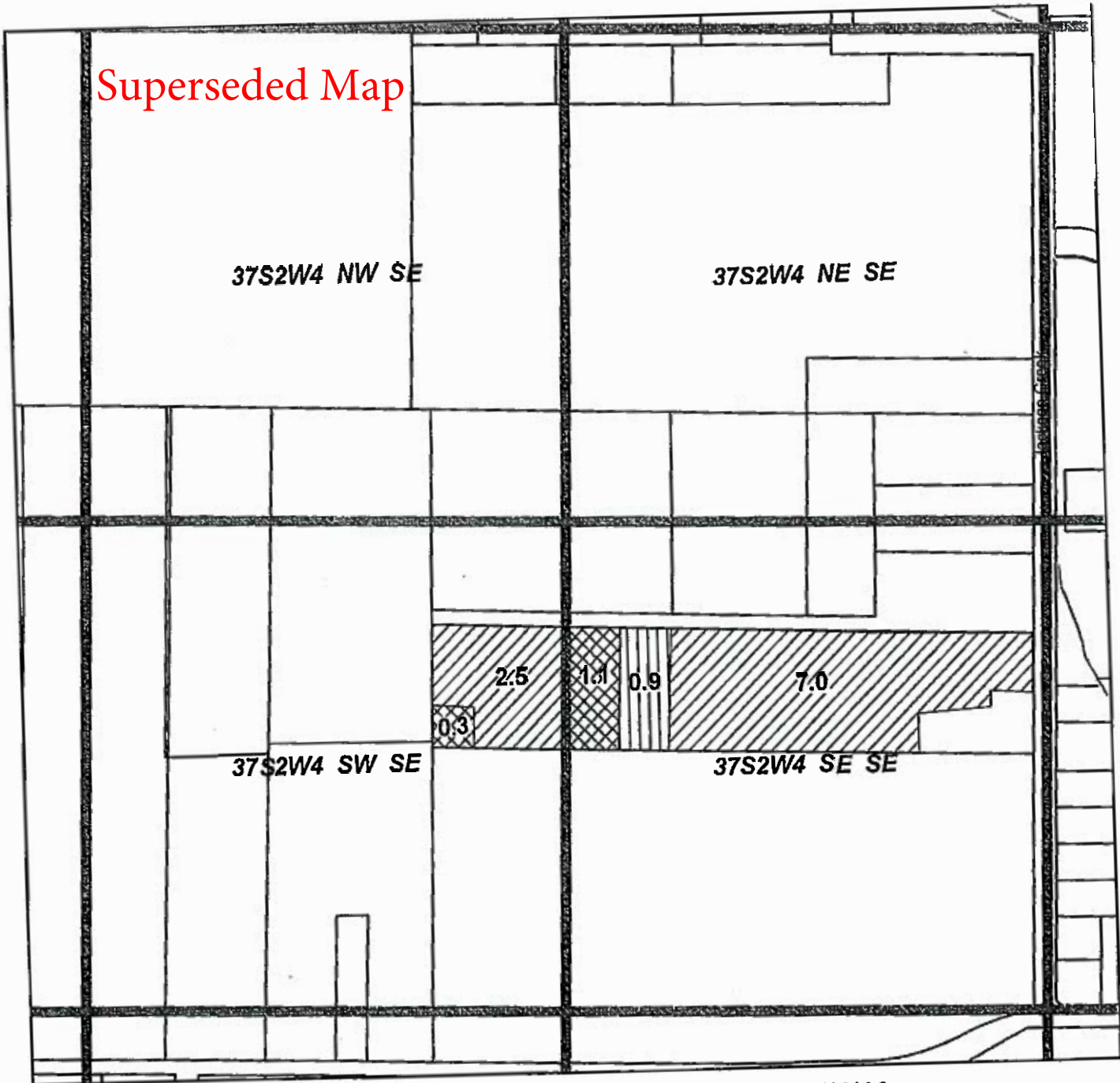
-  Transfer On
-  Transfer ON
-  Current
-  Qtr-Qtr
-  Tax Lot Line



Printed May 2017

Rogue River Valley Irrigation District

Final Proof Map Map



Located in SE 1/4 SE 1/4 SEC 04 T.37S, R.2 W.W.M.
Tax Lot T37S R2W 04 3200 -0.9ac

To: Kinderman




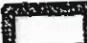

Certificates
P85288
S80575
S80576
S85876
S85877

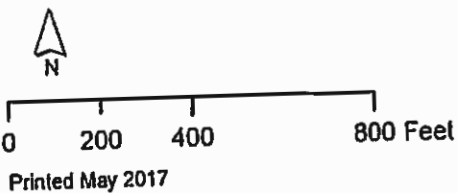
RRVID #17-01

RECEIVED

APR 29 2020

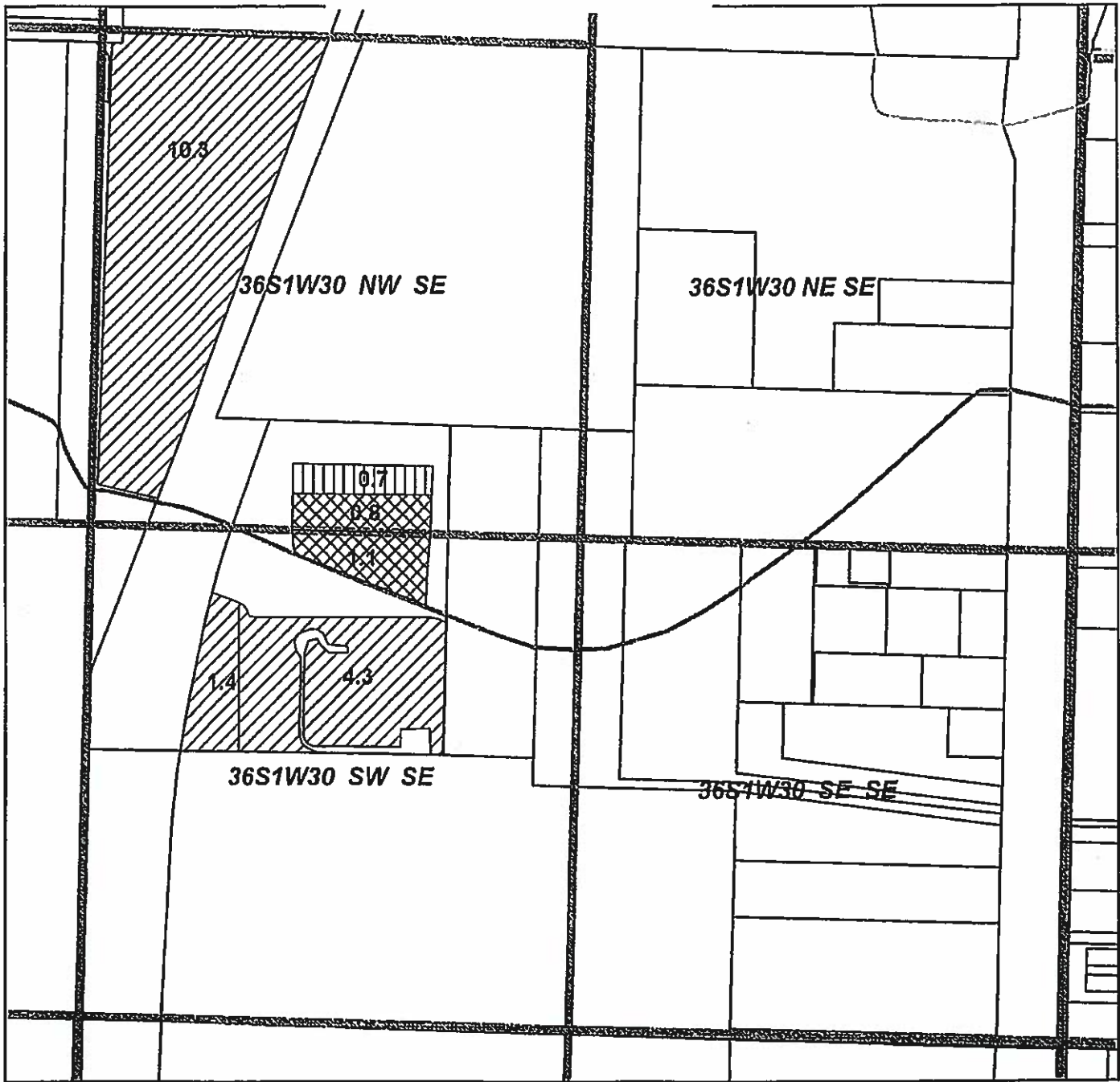
OWRD

-  Transfer On
-  Prior Transfer
-  Current
-  Qtr-Qtr
-  Tax Lot Line



Rogue River Valley Irrigation District

Final Proof Map Map



Located in W 1/2 SE 1/4 SEC 30D T.36S. R.1 W.W.M.
Tax Lot T36S R1W 30D 200 - 2.6 ac

To: Young






Certificates

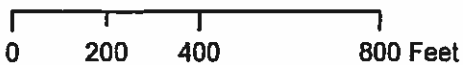
P85286
P85288
S85288
S80576
S85876
S85877

RECEIVED

APR 29 2020

OWRD

-  Transfer On 85286
-  Transfer On 85288
-  Current
-  Tax Lot Line
-  Qtr-Qtr

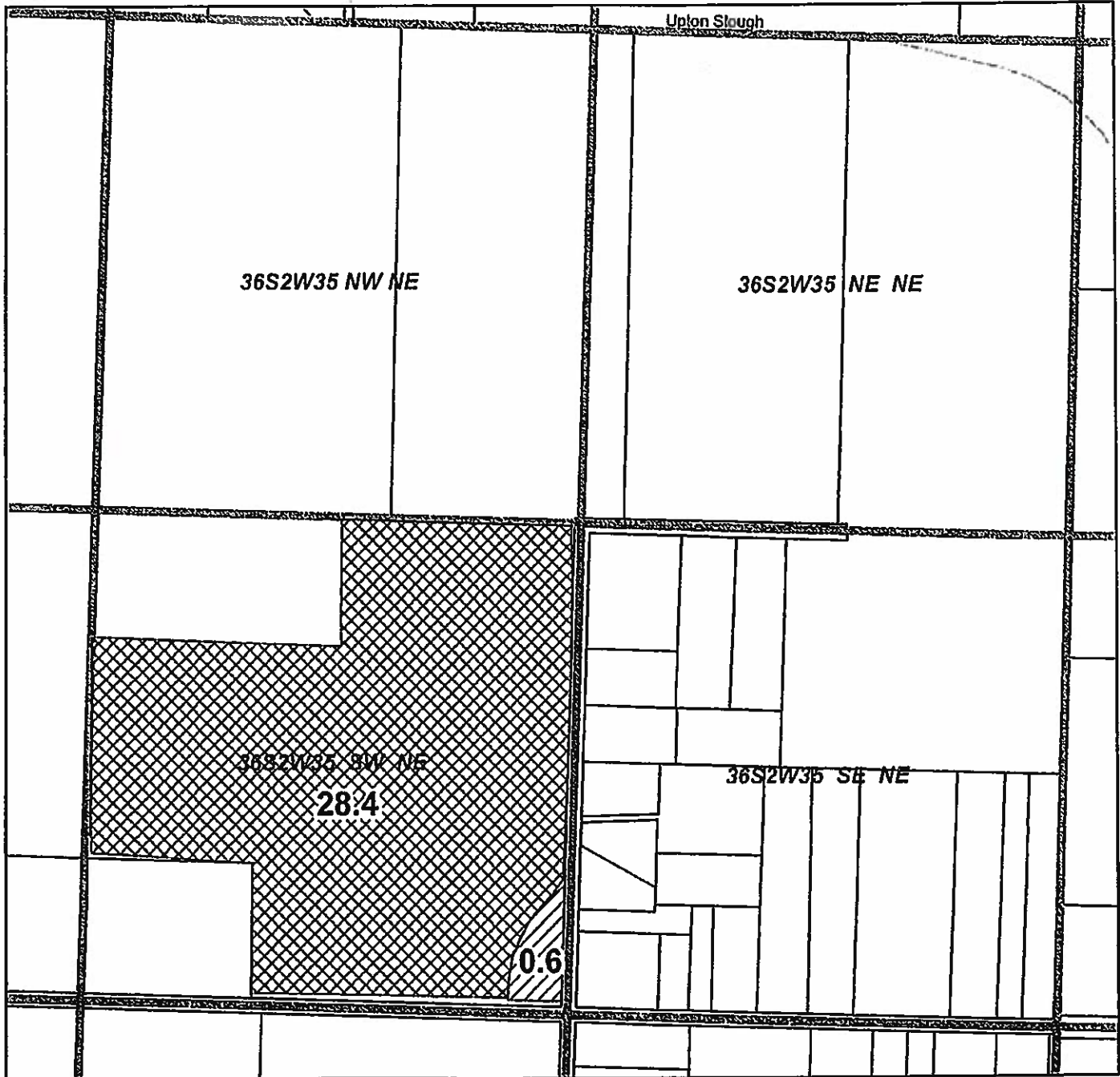


Printed September 2017

RRVID #17-02

Rogue River Valley Irrigation District

Final Proof Map Map



Located in SW 1/4 NE 1/4 SEC 35 T.36S. R.2 W.W.M.

Tax Lot T36S R2W 35 601 - 28.4ac

To: Straus

Certificates

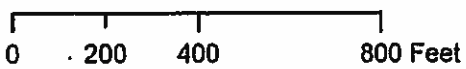
- P85288
- S80576
- S85876
- S85877

RECEIVED

APR 29 2020

OWRD

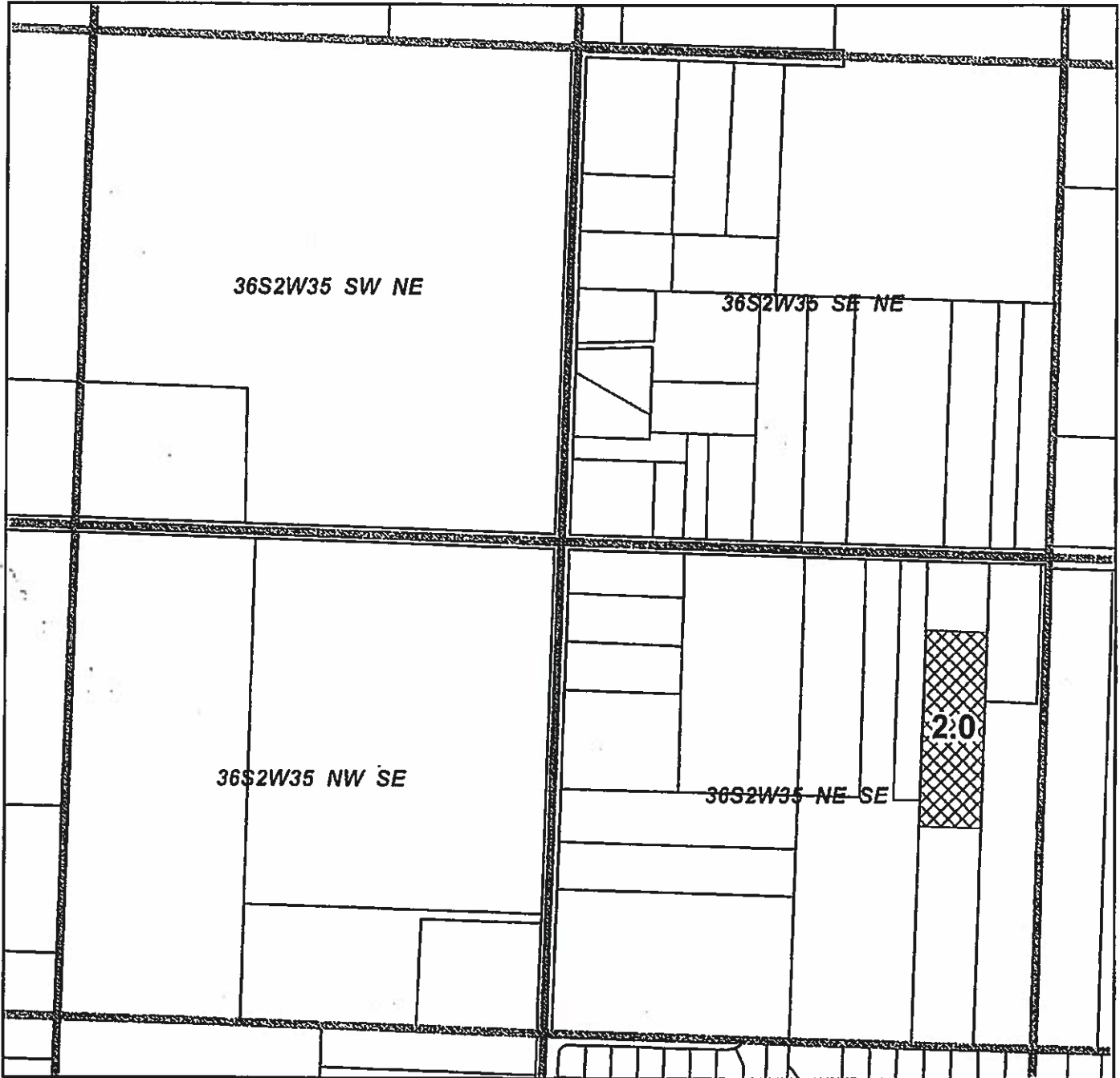
- Transfer On
- Current Water
- Qtr-Qtr
- Tax Lot Line



Printed Oct 2017

RRVID #17-03

Rogue River Valley Irrigation District
Final Proof Map Map



Located in NE 1/4 SE 1/4 SEC 35 T.36S. R.2 W.W.M.

Tax Lot T36S R2W 35D 200 - 2.0 ac

RECEIVED

APR 29 2020

To: Lacey

OWRD

Certificates

P85288
S80576
S85876
S85877

 Transfer On

 Qtr-Qtr

 Tax Lot Line



0 200 400 800 Feet

Printed Oct 2017

RRVID #17-04