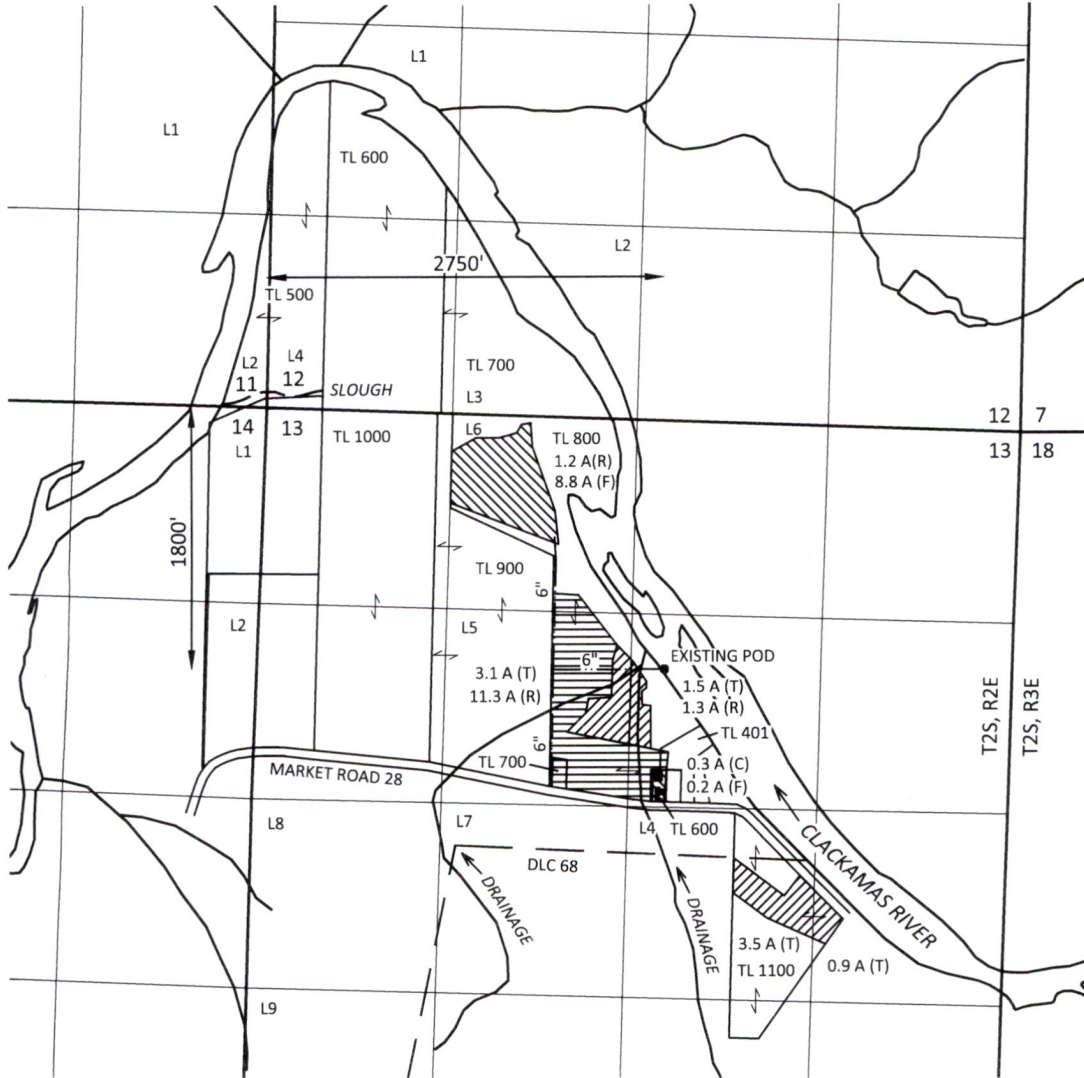


Section 13, T2S, R2E, W.M., Clackamas County, Oregon  
 AMENDED TRANSFER APPLICATION MAP  
 Transfer T-13474  
 Cal Farms Inc.

RECEIVED  
 DEC 29 2020  
 OWRD




**EXPLANATION**

**FROM LANDS (F)**

 CERTIFICATE 30928  
 PRIORITY: 9/29/1958  
 9.0 ACRES

**TO LANDS (T)**

 CERTIFICATE 30928  
 PRIORITY: 9/29/1958  
 9.0 ACRES

**REMAINING RIGHTS (R)**

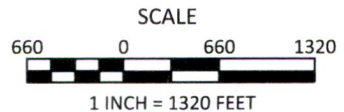
 CERTIFICATE 30928  
 PRIORITY: 9/29/1958  
 13.8 ACRES

**CANCELED RIGHTS (C)**

 CERTIFICATE 30928  
 PRIORITY: 9/29/1958  
 0.3 ACRES

• POINT OF DIVERSION (POD)

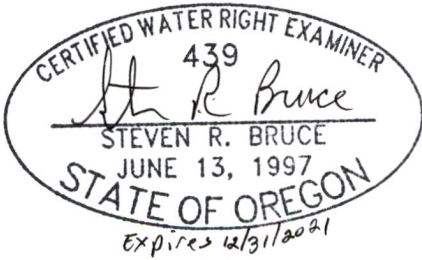
--- PIPELINE (APPROX.)



December 24, 2020

This map is not intended to provide legal dimensions or locations of property ownership lines

Figure 1



**SKOOKUM**  
 WATER ASSOCIATES INC

1626 VICTORIAN WAY  
 EUGENE, OR 97401  
 (503) 319-8926

**SUPERSEDING**

Section 13, T2S, R2E, W.M., Clackamas County, Oregon  
EVIDENCE-OF-USE AERIAL IMAGE  
Transfer T-13474  
Cal Farms Inc.

RECEIVED


DEC 29 2020

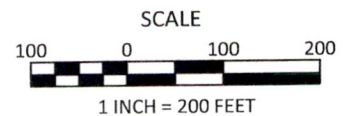
OWRD



Aerial Image Source: USDA/NAIP  
Acquisition Date: 6/5/2016

EXPLANATION

 CERTIFICATE 30928  
PRIORITY: 9/29/1958  
TAXLOT 600 LAWN/GARDEN/LANDSCAPING 0.2 A



December 24, 2020

This map is not intended to provide legal dimensions or locations of property ownership lines

Figure 2

**SKOOKUM**  
WATER ASSOCIATES INC

1626 VICTORIAN WAY  
EUGENE, OR 97401  
(503) 319-8926

**SUPERSEDING**

Section 13, T2S, R2E, W.M.,  
Clackamas County, Oregon

RECEIVED

JUN 16 2020

TRANSFER APPLICATION MAP  
Certificate 30928  
Cal Farms Inc.

OWRD



CERTIFIED WATER RIGHT EXAMINER  
439  
*Steven R. Bruce*  
STEVEN R. BRUCE  
JUNE 13, 1997  
STATE OF OREGON  
Expires 12/31/2021

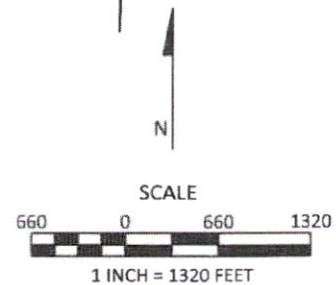
EXPLANATION

FROM LANDS  
 CERTIFICATE 30928  
PRIORITY: 9/29/1958  
9.3 ACRES

TO LANDS  
 CERTIFICATE 30928  
PRIORITY: 9/29/1958  
9.3 ACRES

REMAINING RIGHTS (R)  
 CERTIFICATE 30928  
PRIORITY: 9/29/1958  
13.8 ACRES

• POINT OF DIVERSION (POD)  
 --- PIPELINE (APPROX.)



April 13, 2020

This map is not intended to provide legal dimensions or locations of property ownership lines

Figure 1

**SKOOKUM**  
WATER ASSOCIATES INC  
1626 VICTORIAN WAY  
EUGENE, OR 97401  
(503) 319-8926

13474 -

Section 13, T2S, R2E, W.M.,  
Clackamas County, Oregon

RECEIVED

JUN 16 2020

TRANSFER APPLICATION MAP  
Certificate 30928  
Cal Farms Inc.

OWRD



EXPLANATION

**FROM LANDS**  
 CERTIFICATE 30928  
 PRIORITY: 9/29/1958  
 9.3 ACRES

**TO LANDS**  
 CERTIFICATE 30928  
 PRIORITY: 9/29/1958  
 9.3 ACRES

**REMAINING RIGHTS (R)**  
 CERTIFICATE 30928  
 PRIORITY: 9/29/1958  
 13.8 ACRES

• POINT OF DIVERSION (POD)

--- PIPELINE (APPROX.)

N

SCALE



1 INCH = 1320 FEET

April 13, 2020

This map is not intended to provide legal  
dimensions or locations of property  
ownership lines.

13474

Figure 1

CERTIFIED WATER RIGHT EXAMINER  
439  
*Steven R. Bruce*  
STEVEN R. BRUCE  
JUNE 13, 1997  
STATE OF OREGON  
Expires 12/31/2021

**SKOOKUM**  
WATER ASSOCIATES INC

1626 VICTORIAN WAY  
EUGENE, OR 97401  
(503) 319-8926

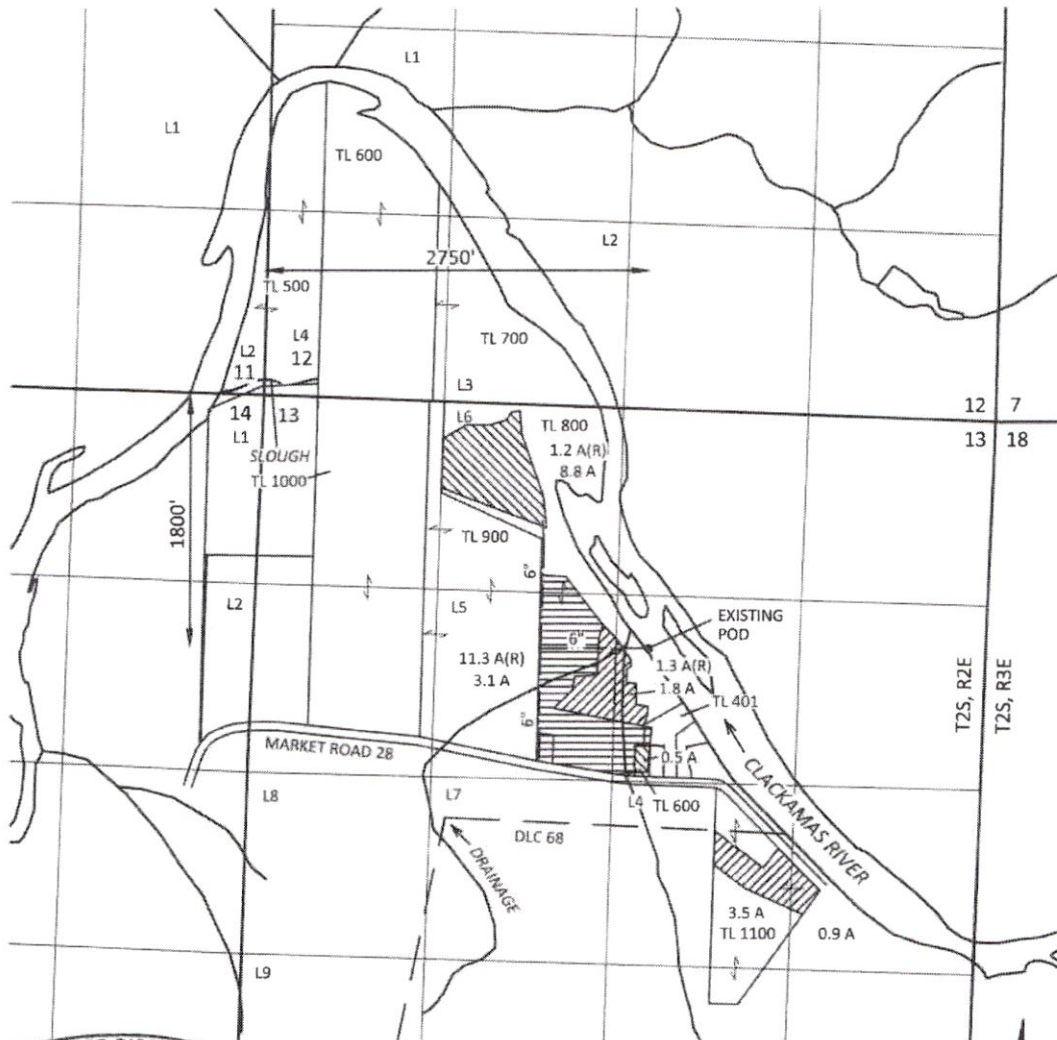
Section 13, T2S, R2E, W.M.,  
Clackamas County, Oregon

RECEIVED

JUN 16 2020

TRANSFER APPLICATION MAP  
Certificate 30928  
Cal Farms Inc.

OWRD



CERTIFIED WATER RIGHT EXAMINER  
439  
*Steven R. Bruce*  
STEVEN R. BRUCE  
JUNE 13, 1997  
STATE OF OREGON  
Expires 12/31/2021

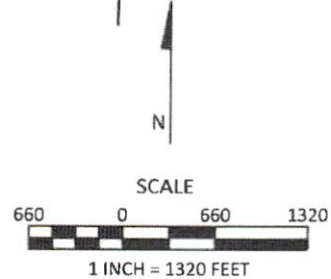
EXPLANATION

FROM LANDS  
 CERTIFICATE 30928  
PRIORITY: 9/29/1958  
9.3 ACRES

TO LANDS  
 CERTIFICATE 30928  
PRIORITY: 9/29/1958  
9.3 ACRES

REMAINING RIGHTS (R)  
 CERTIFICATE 30928  
PRIORITY: 9/29/1958  
13.8 ACRES

• POINT OF DIVERSION (POD)  
 --- PIPELINE (APPROX.)



April 13, 2020

This map is not intended to provide legal  
dimensions or locations of property  
ownership lines

Figure 1

**SKOOKUM**  
WATER ASSOCIATES INC

1626 VICTORIAN WAY  
EUGENE, OR 97401  
(503) 319-8926

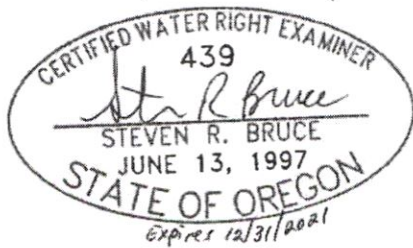
Section 13, T2S, R2E, W.M.,  
Clackamas County, Oregon

RECEIVED

JUN 16 2020

TRANSFER APPLICATION MAP  
Certificate 30928  
Cal Farms Inc.

OWRD



EXPLANATION

FROM LANDS

 CERTIFICATE 30928  
PRIORITY: 9/29/1958  
9.3 ACRES

TO LANDS

 CERTIFICATE 30928  
PRIORITY: 9/29/1958  
9.3 ACRES

REMAINING RIGHTS (R)

 CERTIFICATE 30928  
PRIORITY: 9/29/1958  
13.8 ACRES

• POINT OF DIVERSION (POD)

--- PIPELINE (APPROX.)

SCALE



1 INCH = 1320 FEET

April 13, 2020

This map is not intended to provide legal dimensions or locations of property ownership lines

Figure 1

**SKOOKUM**

WATER ASSOCIATES INC

1626 VICTORIAN WAY  
EUGENE, OR 97401  
(503) 319-8926