

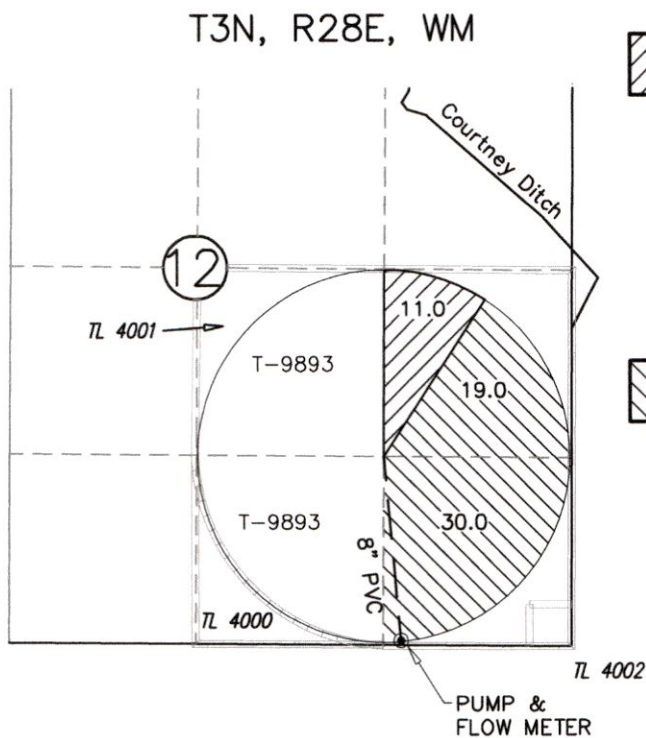
# DAVID CORREA 2020 1 YEAR TEMPORARY TRANSFER

MAP 3 OF 3  
UMATILLA COUNTY  
T3N, R29E, WM

RECEIVED

JUN 15 2020

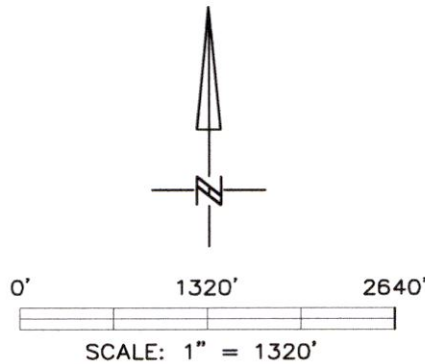
OWRD



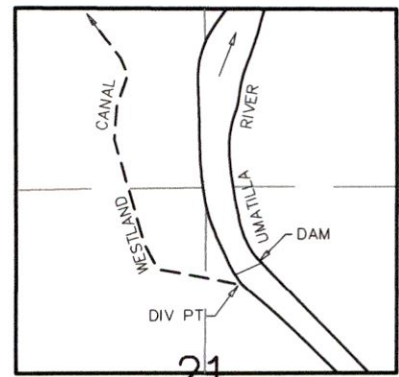
ALLAN DITCH CO.  
UMATILLA RIVER DECREE VOL 3  
PAGE 195 IN THE NAME OF  
FRED ANDREWS, 12/31/1870



PIONEER IRRIGATION CO.  
UMATILLA RIVER DECREE VOL 3  
PAGE 239 IN THE NAME OF  
B.F. McCULLOUGH, 01/09/1900  
  
UMATILLA RIVER DECREE VOL 15  
PAGE 432 IN THE NAME OF  
FRANK CORREA SR, 01/09/1900  
  
UMATILLA RIVER DECREE VOL 3  
PAGE 239 IN THE NAME OF  
ELMER REEVES, 01/09/1900  
  
UMATILLA RIVER DECREE VOL 15  
PAGE 240 IN THE NAME OF  
GEO. WARD, 01/09/1900



T.3N., R.29E., W.M.



DIV PT LCT N.76°45'56"E. 2913.19' FROM W.1/4 COR. SEC 21

**NOTE:**  
THE PURPOSE OF THIS MAP IS TO IDENTIFY THE APPROXIMATE LOCATION OF THE WATER RIGHT. IT IS NOT INTENDED TO PROVIDE INFORMATION RELATIVE TO THE LOCATION OF PROPERTY OWNERSHIP BOUNDARY LINES.

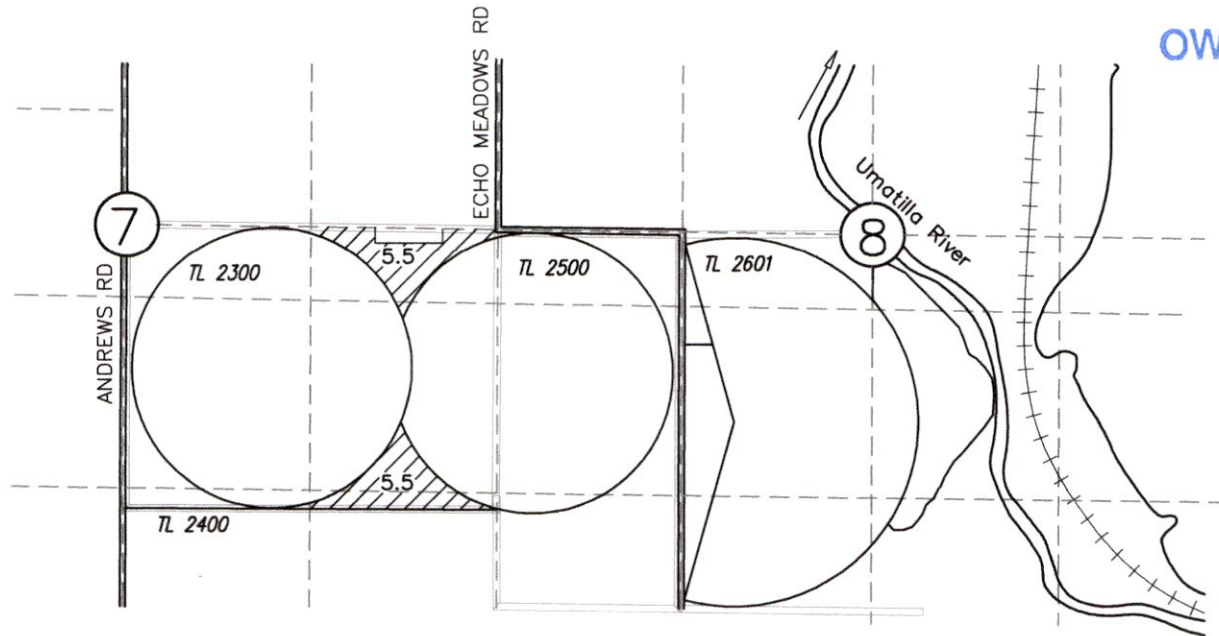
# DAVID CORREA (MILLS TO CORREA) 2020 1 YEAR TEMPORARY TRANSFER

MAP 2 OF 3  
UMATILLA COUNTY  
T3N, R29E, WM

RECEIVED

JUN 15 2020

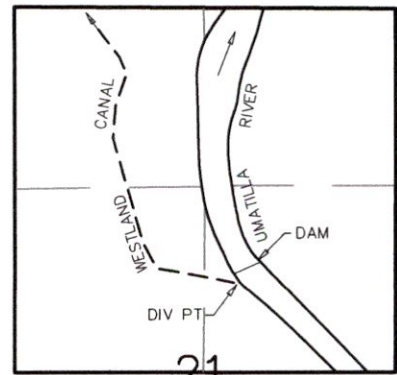
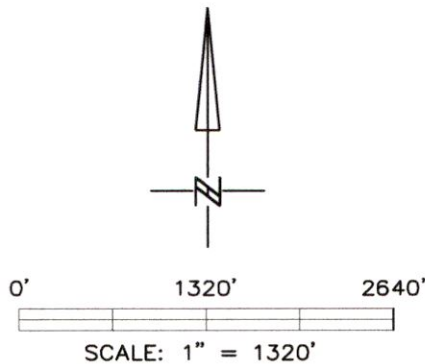
OWRD



FROM  11.0

ALLAN DITCH CO  
UMATILLA RIVER DECREE VOL 3  
PAGE 195 IN THE NAME OF  
FRED ANDREWS, 12/31/1870

T.3N., R.29E., W.M.




DIV PT LCT N.76°45'56"E. 2913.19' FROM W.1/4 COR. SEC 21

**NOTE:**  
THE PURPOSE OF THIS MAP IS TO IDENTIFY THE APPROXIMATE LOCATION OF THE WATER RIGHT. IT IS NOT INTENDED TO PROVIDE INFORMATION RELATIVE TO THE LOCATION OF PROPERTY OWNERSHIP BOUNDARY LINES.

DRAWING: \\KWKFILES\Public\Project\30-08-016 - Porfily Water Rights Consulting\--00 Misc Engineering\Cad\correa\30-08-016 CORR BEAR 2020 2-3.dwg  
PRINTED BY: rwillard on 04/16/20 05:51 AM

# DAVID CORREA

## 2020 1 YEAR TEMPORARY TRANSFER MAP 1 OF 3 UMATILLA COUNTY

FROM  49.0

PIONEER IRRIGATION CO.  
UMATILLA RIVER DECREE VOL 3  
PAGE 239 IN THE NAME OF  
B.F. McCULLOUGH, 01/09/1900

UMATILLA RIVER DECREE VOL 15  
PAGE 432 IN THE NAME OF  
FRANK CORREA SR, 01/09/1900

UMATILLA RIVER DECREE VOL 3  
PAGE 239 IN THE NAME OF  
ELMER REEVES, 01/09/1900

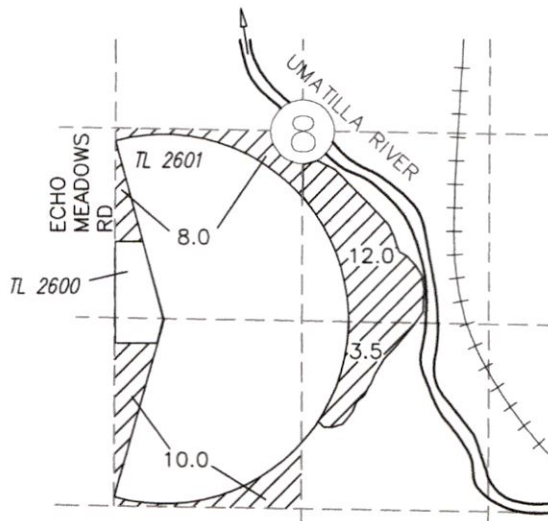
UMATILLA RIVER DECREE VOL 15  
PAGE 240 IN THE NAME OF  
GEO. WARD, 01/09/1900

RECEIVED

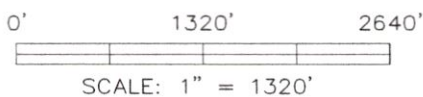
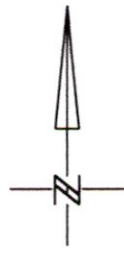
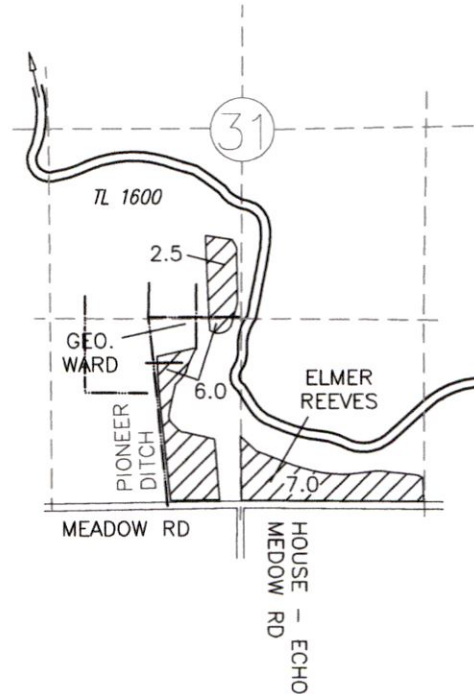
JUN 15 2020

OWRD

T3N, R29E, WM  
CORREA TO CORREA



T4N, R29E, WM  
EMERT TO CORREA



NOTE:  
THE PURPOSE OF THIS MAP IS TO IDENTIFY THE APPROXIMATE LOCATION  
OF THE WATER RIGHT. IT IS NOT INTENDED TO PROVIDE INFORMATION  
RELATIVE TO THE LOCATION OF PROPERTY OWNERSHIP BOUNDARY LINES.

DRAWING: \\KWKFILES\Public\Project\30-08-016 - Porfily Water Rights Consulting\00 Misc Engineering\Cad\correa\30-08-016 CORR BEAR 2020 1-3.dwg  
PRINTED BY: rwillard on 04/21/20 02:31 PM

13469 -