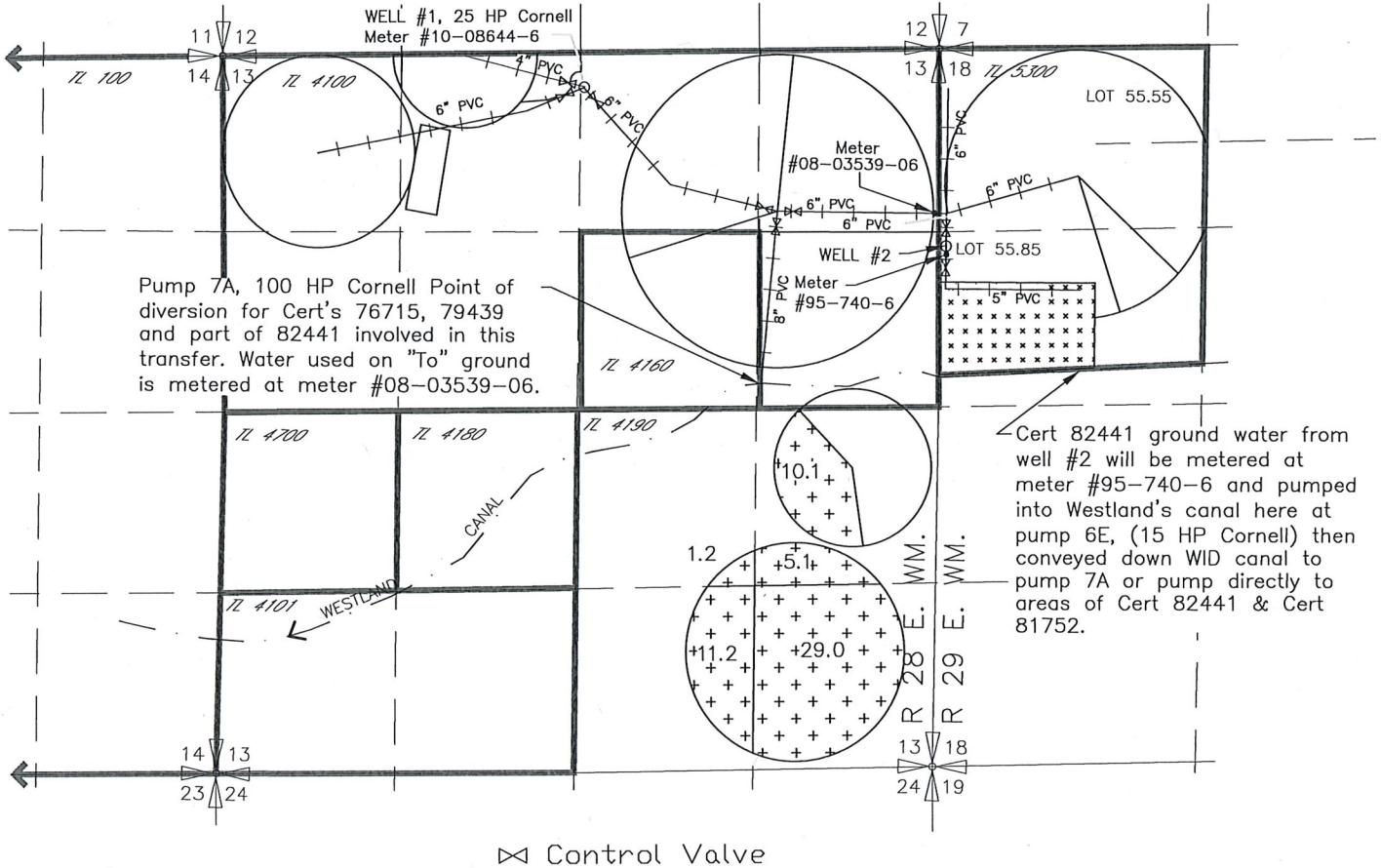


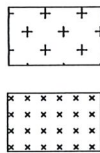
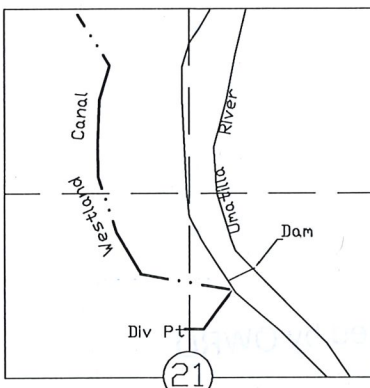
# 2020 WESTLAND IRRIGATION DISTRICT TRANSFER APPLICATION MAP DOUBLE M RANCH, INC

T-9198 CERT 76050, T-9198 CERT 79439  
T3N, R 28 & 29 E, W.M.

## TO MAP 3 OF 3



T3N., R 29E., W.M.



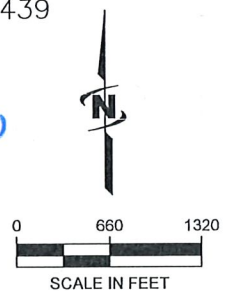
T-9198 CERT 76050  
SUPP T-9198 CERT 79439

NOT INVOLVED IN THIS TRANSFER

Received by OWRD

APR 28 2020

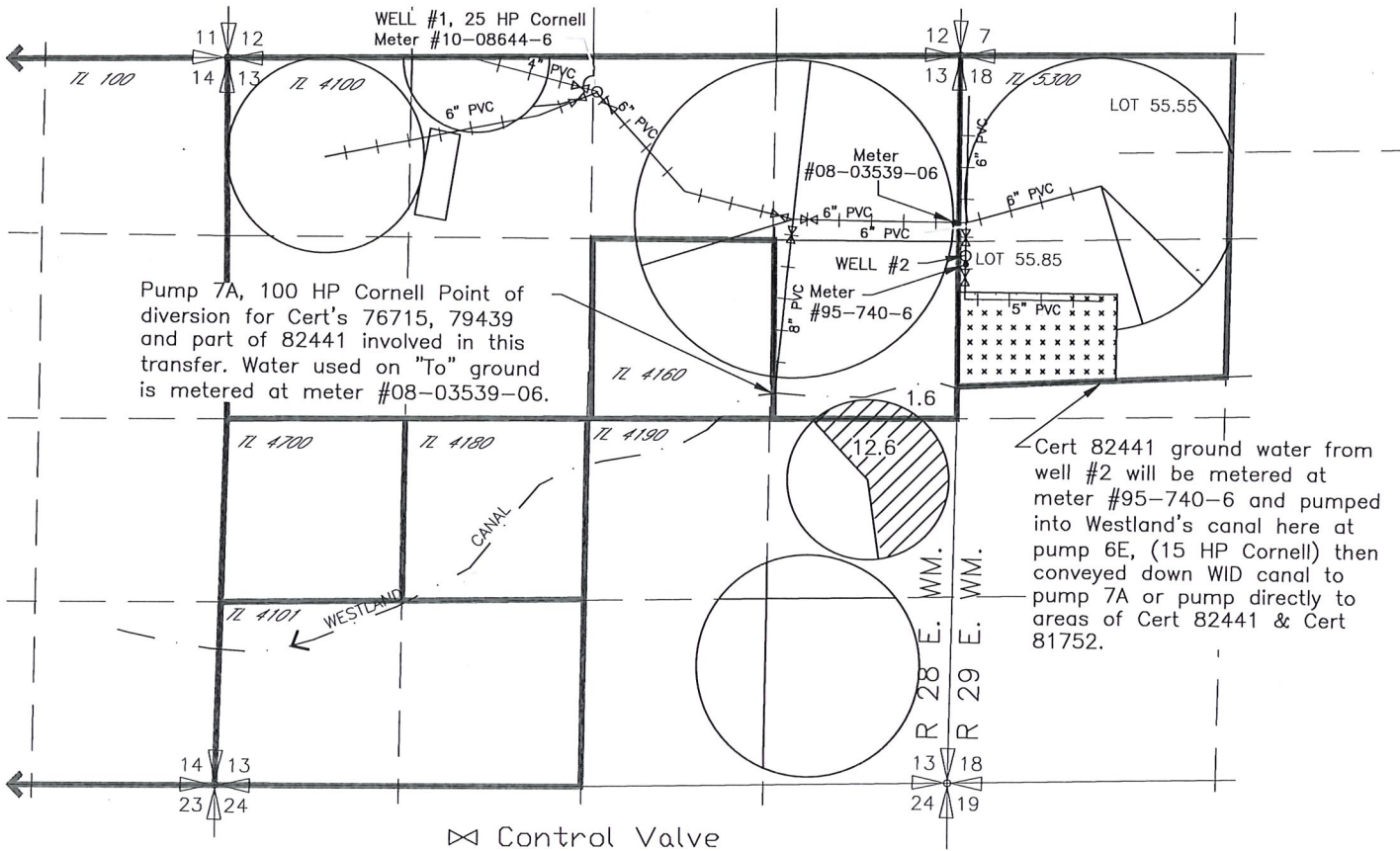
Salem, OR



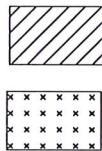
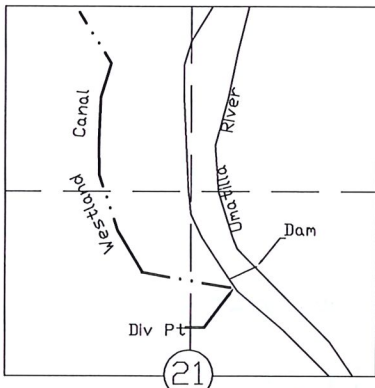
NOTE: THE PURPOSE OF THIS MAP IS TO IDENTIFY THE APPROXIMATE LOCATION OF THE WATER RIGHT. IT IS NOT INTENDED TO PROVIDE INFORMATION RELATIVE TO THE LOCATION OF PROPERTY OWNERSHIP BOUNDARY LINES.

DRAWING: \\KWKFILES\Public\Project\30-08-016 - Porfly Water Rights Consulting\00 Misc Engineering\Cad\052\Double M.2020 TO TR.dwg  
PRINTED BY: rwillard on 04/28/20 06:24 AM

# 2020 WESTLAND IRRIGATION DISTRICT TRANSFER APPLICATION MAP DOUBLE M RANCH, INC T-9198 CERT 76051, T-9198 CERT 79439 T3N, R 28 & 29 E, W.M. TO MAP 2 OF 3



T3N., R 29E., W.M.



14.2 ac

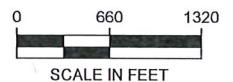
T-9198 CERT 76051  
SUPP T-9198 CERT 79439

NOT INVOLVED IN THIS  
TRANSFER

Received by OWRD

APR 28 2020

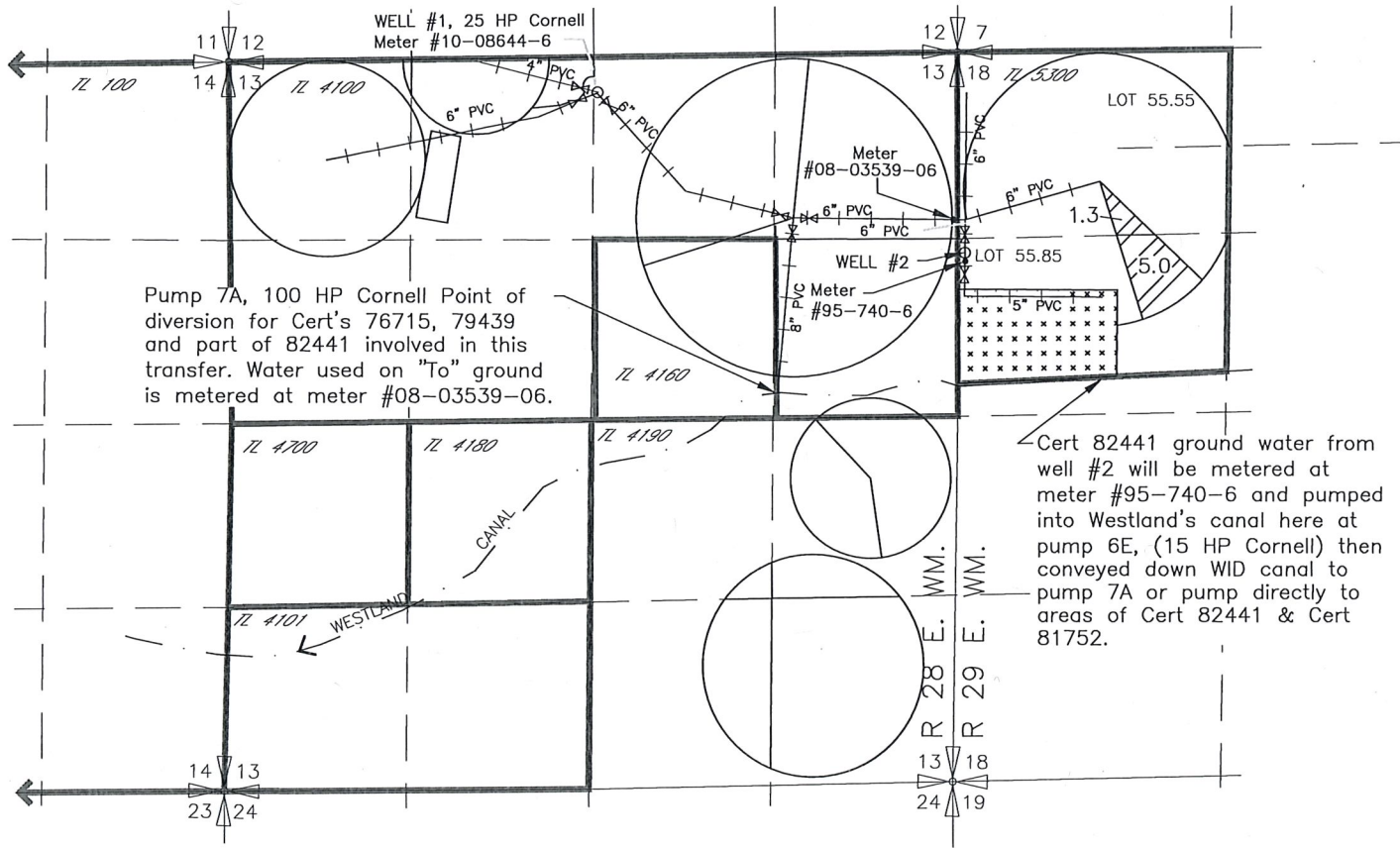
Salem, OR



NOTE: THE PURPOSE OF THIS MAP IS TO IDENTIFY THE APPROXIMATE LOCATION OF THE WATER RIGHT. IT IS NOT INTENDED TO PROVIDE INFORMATION RELATIVE TO THE LOCATION OF PROPERTY OWNERSHIP BOUNDARY LINES.

DRAWING: \\KWKFILES\Public\Project\30-08-016 - Porfily Water Rights Consulting\00 Misc Engineering\Cad\052\Double M.2020 TO TR.dwg  
PRINTED BY: rwillard on 04/28/20 06:24 AM

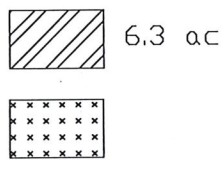
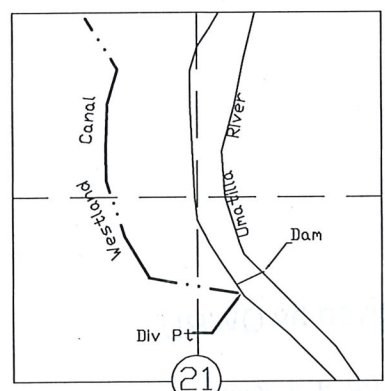
# 2020 WESTLAND IRRIGATION DISTRICT TRANSFER APPLICATION MAP DOUBLE M RANCH, INC CERT'S 76715, 79439 T3N, R 28 & 29 E, W.M. TO MAP 1 OF 3



Cert 82441 ground water from well #2 will be metered at meter #95-740-6 and pumped into Westland's canal here at pump 6E, (15 HP Cornell) then conveyed down WID canal to pump 7A or pump directly to areas of Cert 82441 & Cert 81752.

⊗ Control Valve

T3N., R 29E., W.M.



Primary Cert 76715 & Supp Cert 79439

Received by OWRD

APR 28 2020

Salem, OR



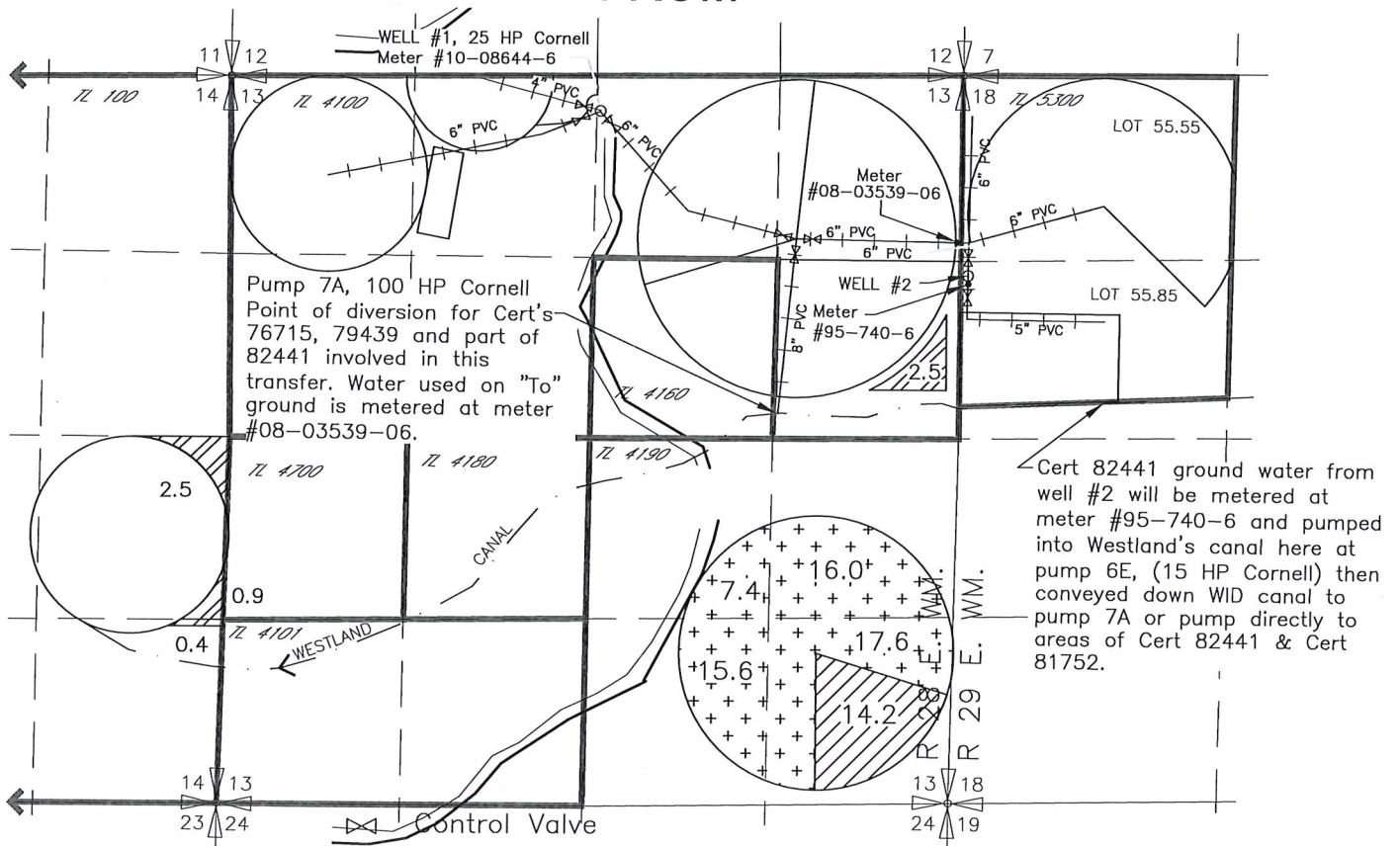
NOTE: THE PURPOSE OF THIS MAP IS TO IDENTIFY THE APPROXIMATE LOCATION OF THE WATER RIGHT. IT IS NOT INTENDED TO PROVIDE INFORMATION RELATIVE TO THE LOCATION OF PROPERTY OWNERSHIP BOUNDARY LINES.



# 2020 WESTLAND IRRIGATION DISTRICT INDEX TRANSFER APPLICATION MAP DOUBLE M RANCH, INC

CERT'S 76715, 79439, T-9198 CERT 81752,  
T-9198 CERT 76051, T-9198 CERT 79439  
T3N, R 28 & 29 E, W.M.

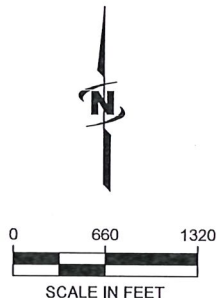
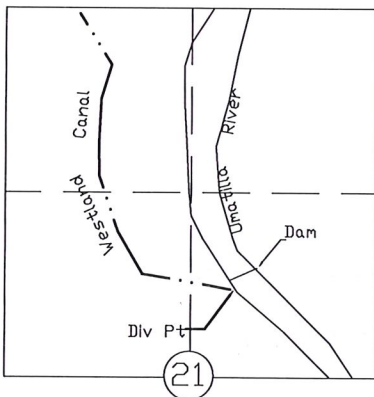
## FROM



WELL #1 Located 270' South & 2540' West from the NE corner section 13, T3N, R28E, WM

WELL #2 Located 1450' South & 3160' West from the N 1/4 corner section 18, T3N, R29E, WM

T3N., R 29E., W.M.



### INDEX

MAP #1		6.3	Primary Cert 76715 & SUPP Cert 79439
MAP #2		14.2 ac	T-9198 CERT 76051 SUPP T-9198 CERT 79439
MAP #3		56.6 ac	T-9198 CERT 76050 SUPP T-9198 CERT 79439

Received by WIRD

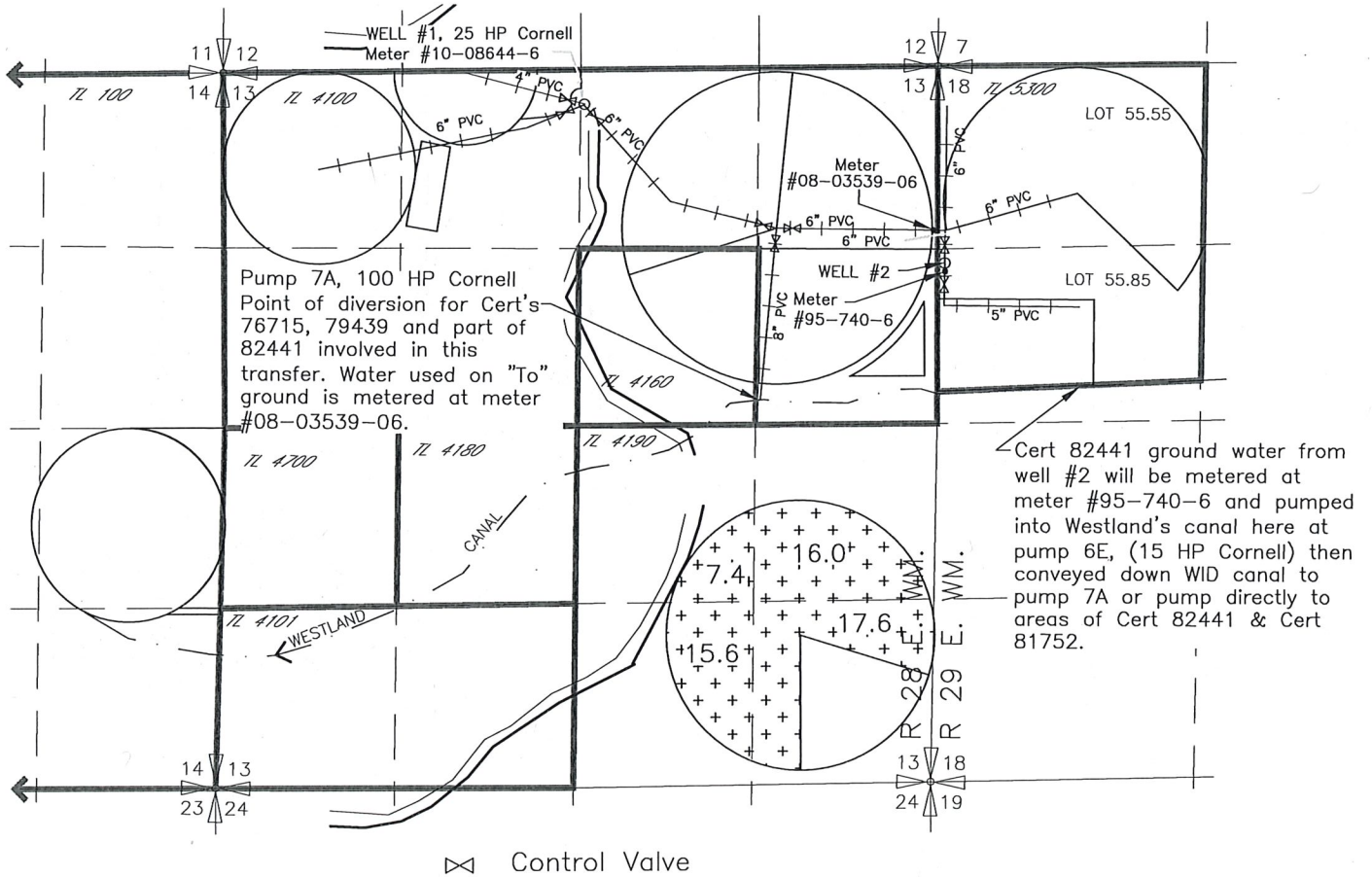
APR 28 2020

Salem, OR

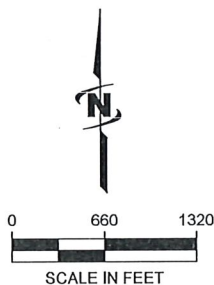
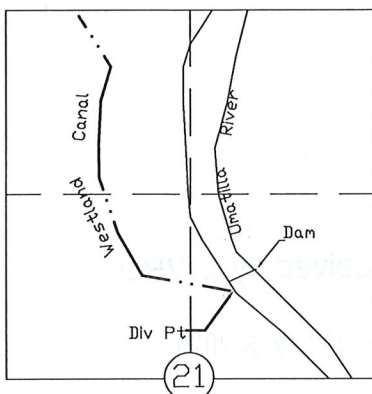
NOTE: THE PURPOSE OF THIS MAP IS TO IDENTIFY THE APPROXIMATE LOCATION OF THE WATER RIGHT. IT IS NOT INTENDED TO PROVIDE INFORMATION RELATIVE TO THE LOCATION OF PROPERTY OWNERSHIP BOUNDARY LINES.



# 2020 WESTLAND IRRIGATION DISTRICT TRANSFER APPLICATION MAP DOUBLE M RANCH, INC T-9198 CERT 76050, T-9198 CERT 79439 T3N, R 28 & 29 E, W.M. FROM MAP 3 OF 3



T3N., R 29E., W.M.



56.6 ac T-9198 CERT 76050  
SUPP T-9198 CERT 79439

Received by OWRD

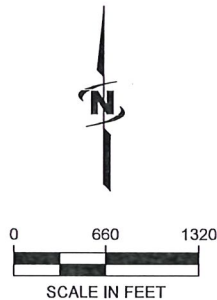
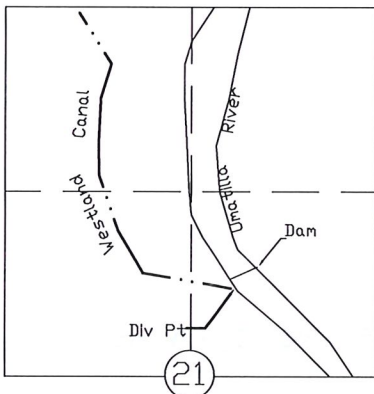
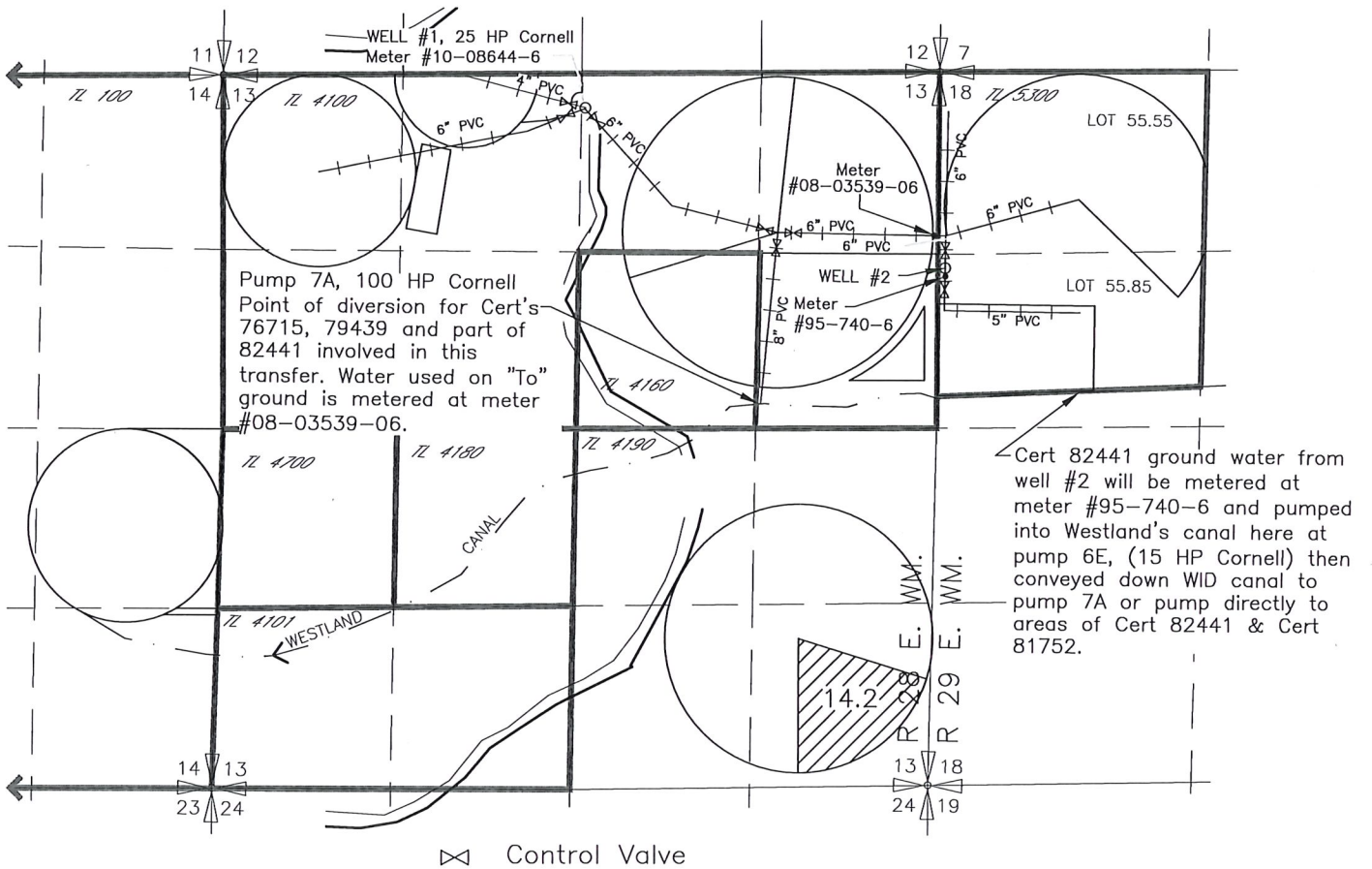
APR 28 2020

Salem, OR

NOTE: THE PURPOSE OF THIS MAP IS TO IDENTIFY THE APPROXIMATE LOCATION OF THE WATER RIGHT. IT IS NOT INTENDED TO PROVIDE INFORMATION RELATIVE TO THE LOCATION OF PROPERTY OWNERSHIP BOUNDARY LINES.

DRAWING: \\KWKFILES\Public\Project\30-08-016 - Porfly Water Rights Consulting\00 Misc Engineering\Cod\052\Double M.2020 FROM TR.dwg  
PRINTED BY: rwillard on 04/28/20 06:07 AM

**2020 WESTLAND IRRIGATION DISTRICT  
TRANSFER APPLICATION MAP  
DOUBLE M RANCH, INC  
T-9198 CERT 76051, T-9198 CERT 79439  
T3N, R 28 & 29 E, W.M.  
FROM  
MAP 2 OF 3**



14.2 ac T-9198 CERT 76051  
SUPP T-9198 CERT 79439

**Received by OWRD**

**APR 28 2020**

**Salem, OR**

NOTE: THE PURPOSE OF THIS MAP IS TO IDENTIFY THE APPROXIMATE LOCATION OF THE WATER RIGHT. IT IS NOT INTENDED TO PROVIDE INFORMATION RELATIVE TO THE LOCATION OF PROPERTY OWNERSHIP BOUNDARY LINES.  
DRAWING: \\KWKFILES\Public\Project\30-08-016 - Porfly Water Rights Consulting\00 Misc Engineering\Cad\052\Double M.2020 FROM TR.dwg  
PRINTED BY: rwillard on 04/28/20 06:07 AM

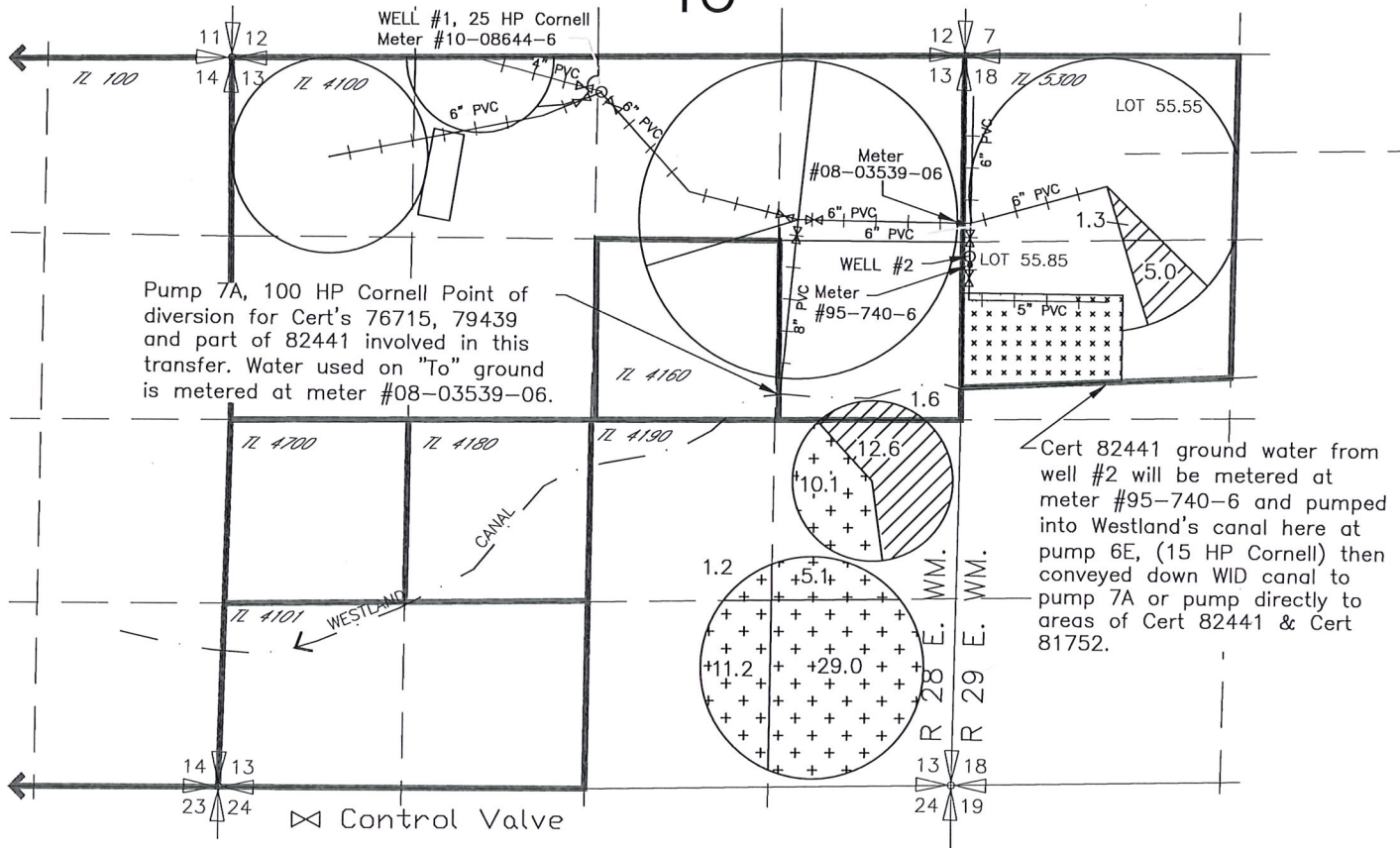




# 2020 WESTLAND IRRIGATION DISTRICT INDEX TRANSFER APPLICATION MAP DOUBLE M RANCH, INC

CERT'S 76715, 79439, T-9198 CERT 81752,  
T-9198 CERT 76051, T-9198 CERT 79439  
T3N, R 28 & 29 E, W.M.

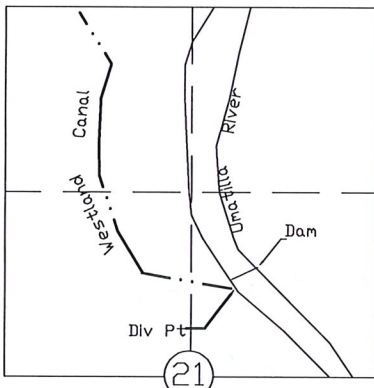
TO



WELL #1 Located 270' South & 2540' West from the NE corner section 13, T3N, R28E, WM

WELL #2 Located 1450' South & 3160' West from the N 1/4 corner section 18, T3N, R29E, WM  
T3N., R 29E., W.M.

### INDEX

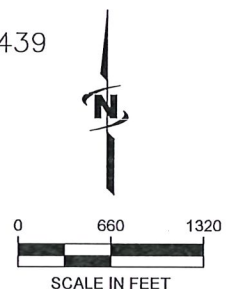


MAP 1		6.3 ac	Primary Cert 76715 & SUPP Cert 79439
MAP 2		14.2 ac	T-9198 CERT 76051 SUPP T-9198 CERT 79439
MAP 3		56.6 ac	T-9198 CERT 76050 SUPP T-9198 CERT 79439
			NOT INVOLVED IN THIS TRANSFER

Received by OWRD

APR 28 2020

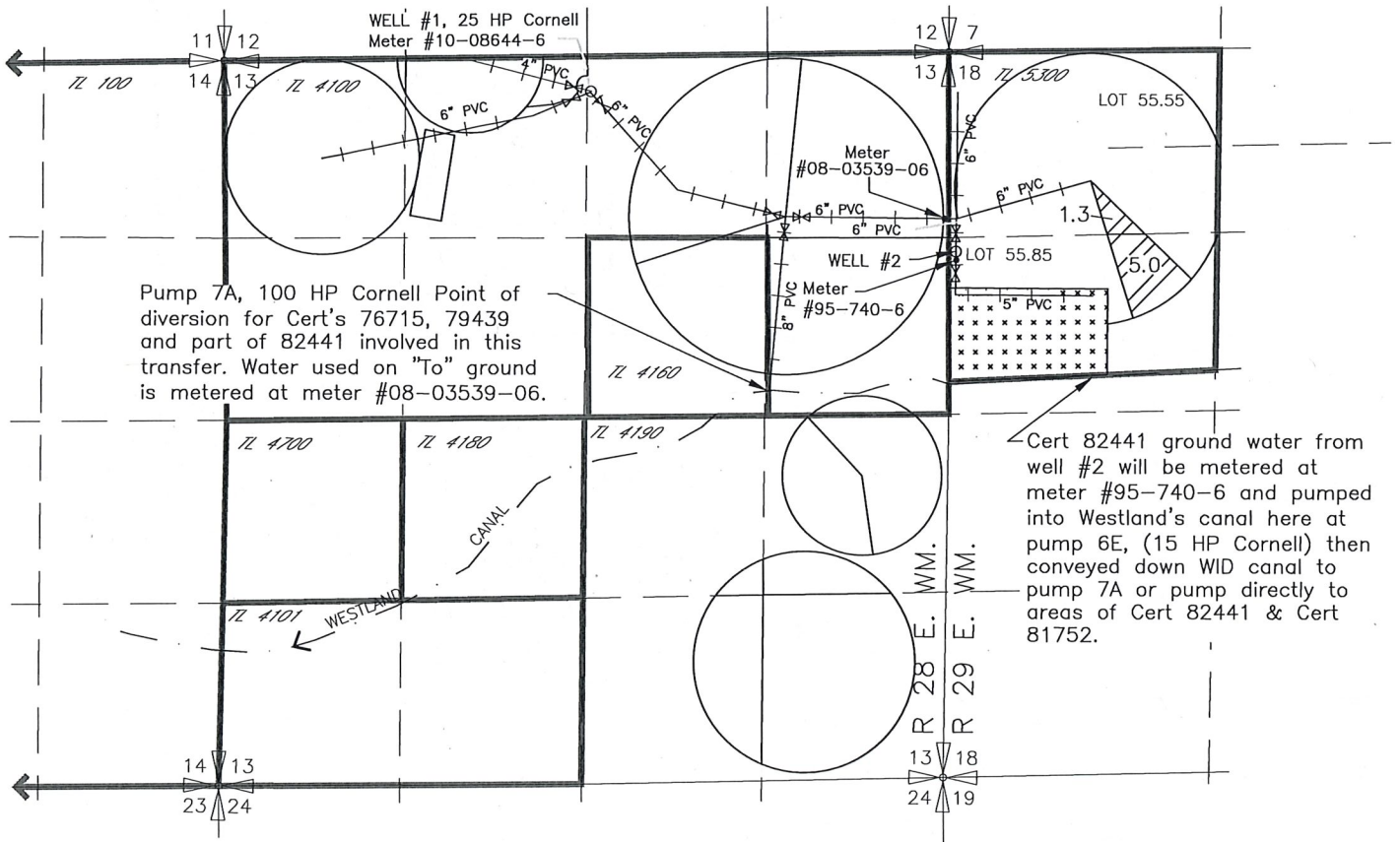
Salem, OR



NOTE: THE PURPOSE OF THIS MAP IS TO IDENTIFY THE APPROXIMATE LOCATION OF THE WATER RIGHT. IT IS NOT INTENDED TO PROVIDE INFORMATION RELATIVE TO THE LOCATION OF PROPERTY OWNERSHIP BOUNDARY LINES.

DRAWING: \\KWKFILES\Public\Project\30-08-016 - Porfily Water Rights Consulting\--00 Misc Engineering\Cod\052\Double M.2020 TO TR.dwg  
PRINTED BY: rwillard on 04/28/20 06:25 AM

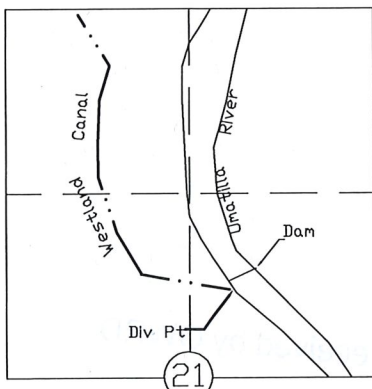
# 2020 WESTLAND IRRIGATION DISTRICT TRANSFER APPLICATION MAP DOUBLE M RANCH, INC CERT'S 76715, 79439 T3N, R 28 & 29 E, W.M. TO MAP 1 OF 3



Cert 82441 ground water from well #2 will be metered at meter #95-740-6 and pumped into Westland's canal here at pump 6E, (15 HP Cornell) then conveyed down WID canal to pump 7A or pump directly to areas of Cert 82441 & Cert 81752.

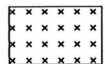
⊗ Control Valve

T3N., R 29E., W.M.



 6.3 ac

Primary Cert 76715 & Supp Cert 79439

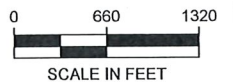


NOT INVOLVED IN THIS TRANSFER

Received by OWRD

APR 28 2020

Salem, OR



NOTE: THE PURPOSE OF THIS MAP IS TO IDENTIFY THE APPROXIMATE LOCATION OF THE WATER RIGHT. IT IS NOT INTENDED TO PROVIDE INFORMATION RELATIVE TO THE LOCATION OF PROPERTY OWNERSHIP BOUNDARY LINES.

DRAWING: \\KWKFILES\Public\Project\30-08-016 - Porfily Water Rights Consulting\00 Misc Engineering\Cad\052\Double M.2020 TO TR.dwg  
PRINTED BY: rwillard on 04/28/20 06:25 AM



# 2020 WESTLAND IRRIGATION DISTRICT INDEX TRANSFER APPLICATION MAP

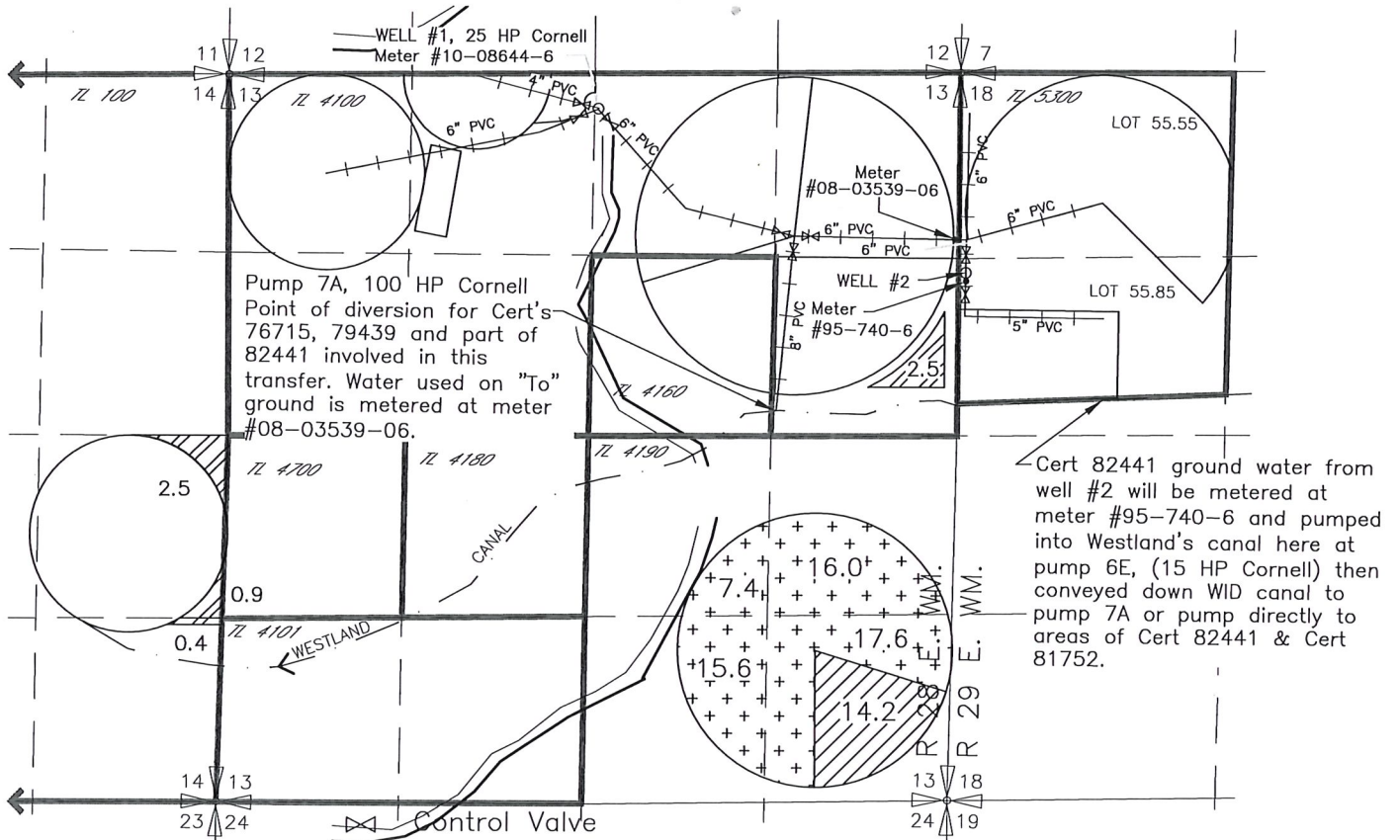
## DOUBLE M RANCH, INC

CERT'S 76715, 79439, T-9198 CERT 81752,

T-9198 CERT 76051, T-9198 CERT 79439

T3N, R 28 & 29 E, W.M.

FROM



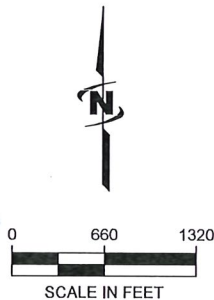
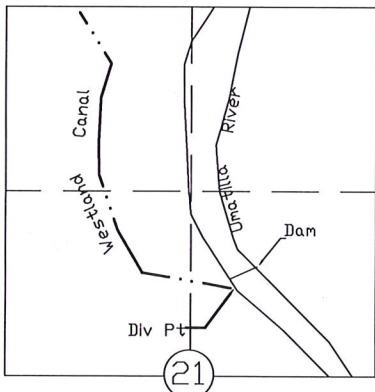
Pump 7A, 100 HP Cornell  
Point of diversion for Cert's  
76715, 79439 and part of  
82441 involved in this  
transfer. Water used on "To"  
ground is metered at meter  
#08-03539-06.

Cert 82441 ground water from  
well #2 will be metered at  
meter #95-740-6 and pumped  
into Westland's canal here at  
pump 6E, (15 HP Cornell) then  
conveyed down WID canal to  
pump 7A or pump directly to  
areas of Cert 82441 & Cert  
81752.

WELL #1 Located 270' South & 2540' West from the NE corner  
section 13, T3N, R28E, WM

WELL #2 Located 1450' South & 3160' West from the N 1/4  
corner section 18, T3N, R29E, WM

T3N., R 29E., W.M.



### INDEX

- MAP #1 6.3
- MAP #2 14.2 ac
- MAP #3 56.6 ac

Primary Cert 76715 &  
SUPP Cert 79439

T-9198 CERT 76051  
SUPP T-9198 CERT  
79439

T-9198 CERT 76050  
SUPP T-9198 CERT  
79439

Received by OWRD

APR 28 2020

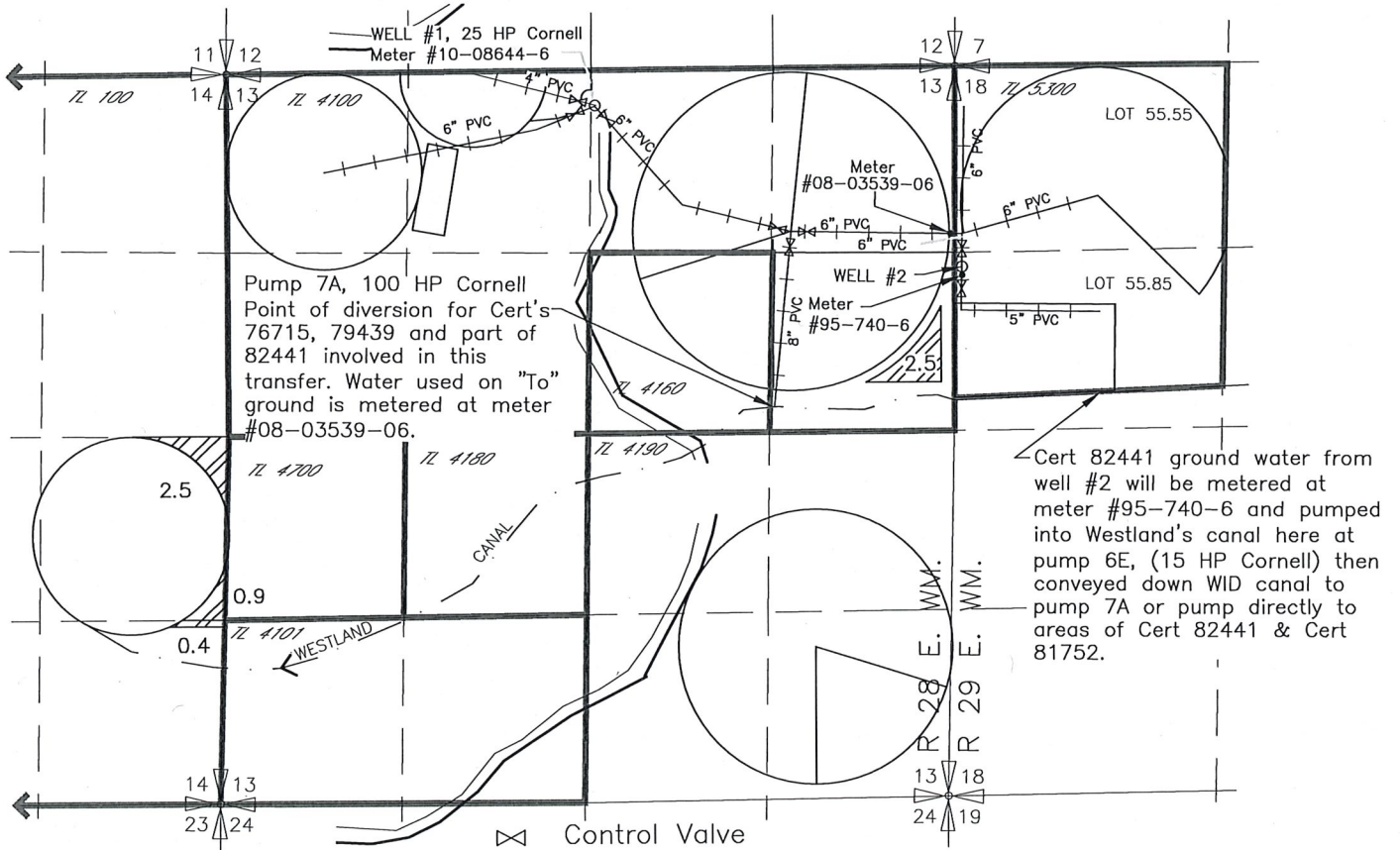
Salem, OR

NOTE: THE PURPOSE OF THIS MAP IS TO IDENTIFY THE APPROXIMATE LOCATION  
OF THE WATER RIGHT. IT IS NOT INTENDED TO PROVIDE INFORMATION  
RELATIVE TO THE LOCATION OF PROPERTY OWNERSHIP BOUNDARY LINES.

DRAWING: \\KWKFILES\Public\Project\30-08-016 - Porfly Water Rights Consulting\00 Misc Engineering\Cad\052\Double M.2020 FROM TR.dwg  
PRINTED BY: willard on 04/28/20 06:06 AM

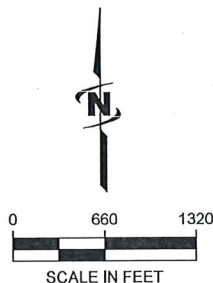
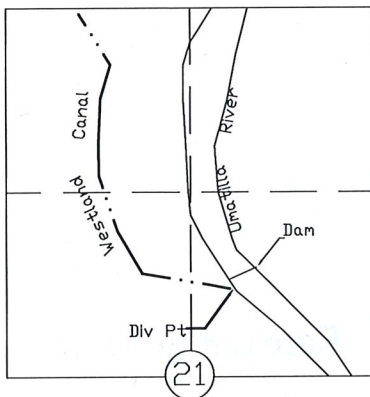


# 2020 WESTLAND IRRIGATION DISTRICT TRANSFER APPLICATION MAP DOUBLE M RANCH, INC CERT'S 76715, 79439 T3N, R 28 & 29 E, W.M. FROM MAP 1 OF 3



Cert 82441 ground water from well #2 will be metered at meter #95-740-6 and pumped into Westland's canal here at pump 6E, (15 HP Cornell) then conveyed down WID canal to pump 7A or pump directly to areas of Cert 82441 & Cert 81752.

T3N., R 29E., W.M.



5.9 ac

Primary T-11328 Cert  
76715 & SUPP  
T-11328 Cert 79439

Received by OWRD

APR 28 2020

Salem, OR

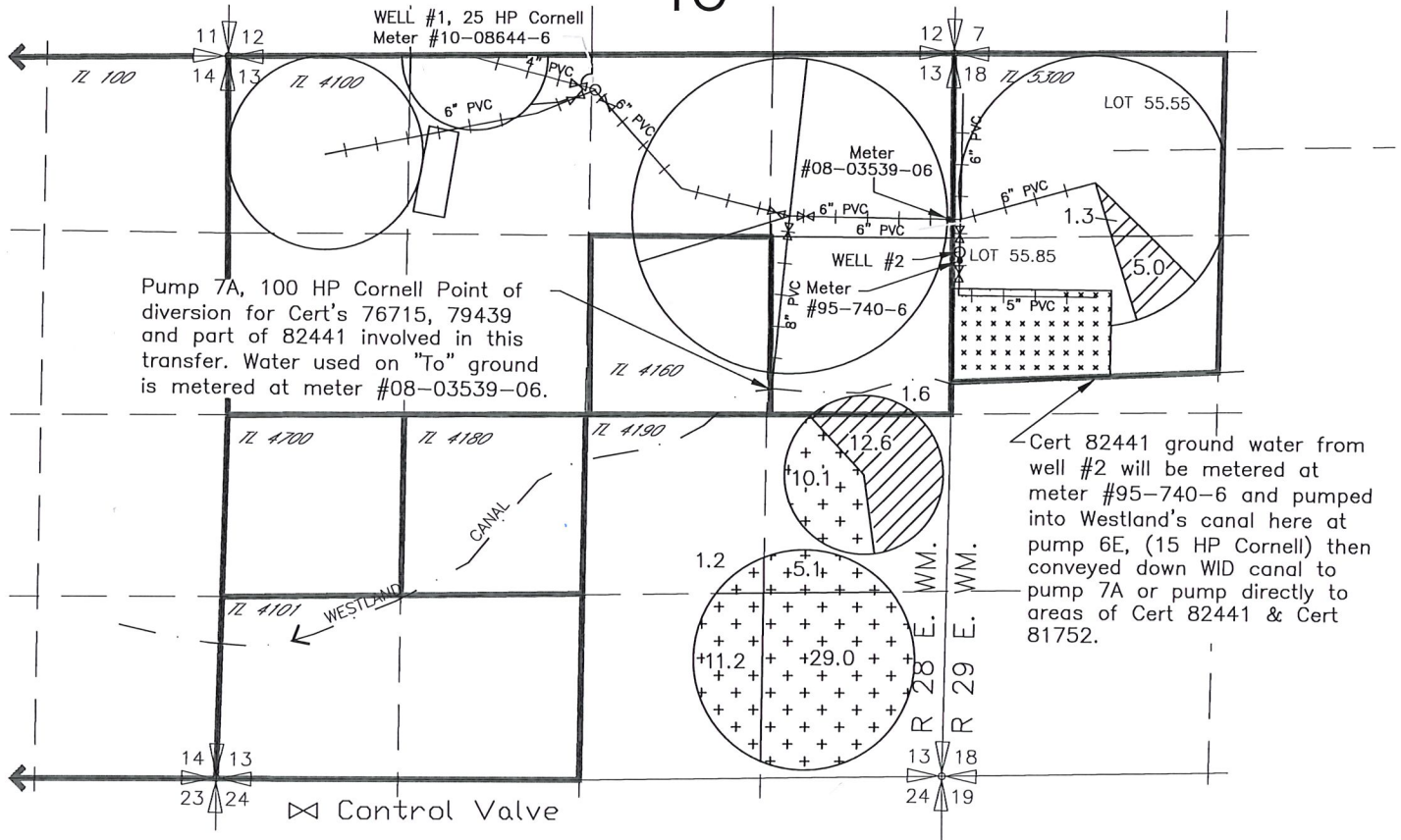
NOTE: THE PURPOSE OF THIS MAP IS TO IDENTIFY THE APPROXIMATE LOCATION OF THE WATER RIGHT. IT IS NOT INTENDED TO PROVIDE INFORMATION RELATIVE TO THE LOCATION OF PROPERTY OWNERSHIP BOUNDARY LINES.

DRAWING: \\KWKFILES\Public\Project\30-08-016 - Porfly Water Rights Consulting\00 Misc Engineering\Cad\052\Double M.2020 FROM TR.dwg  
PRINTED BY: rwillard on 04/28/20 06:07 AM

# 2020 WESTLAND IRRIGATION DISTRICT INDEX TRANSFER APPLICATION MAP DOUBLE M RANCH, INC

CERT'S 76715, 79439, T-9198 CERT 81752,  
T-9198 CERT 76051, T-9198 CERT 79439  
T3N, R 28 & 29 E, W.M.

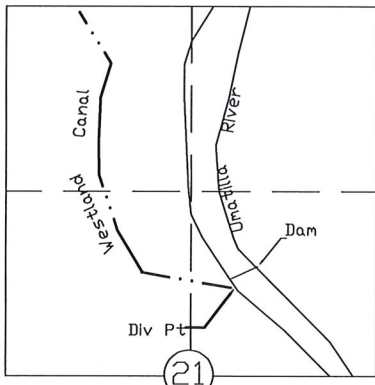
TO



Cert 82441 ground water from well #2 will be metered at meter #95-740-6 and pumped into Westland's canal here at pump 6E, (15 HP Cornell) then conveyed down WID canal to pump 7A or pump directly to areas of Cert 82441 & Cert 81752.

WELL #1 Located 270' South & 2540' West from the NE corner section 13, T3N, R28E, WM  
WELL #2 Located 1450' South & 3160' West from the N 1/4 corner section 18, T3N, R29E, WM  
T3N., R 29E., W.M.

### INDEX



MAP 1		6.3 ac	Primary Cert 76715 & SUPP Cert 79439
MAP 2		14.2 ac	T-9198 CERT 76051 SUPP T-9198 CERT 79439
MAP 3		56.6 ac	T-9198 CERT 76050 SUPP T-9198 CERT 79439
			NOT INVOLVED IN THIS TRANSFER

Received by OWRD



NOTE: THE PURPOSE OF THIS MAP IS TO IDENTIFY THE APPROXIMATE LOCATION OF THE WATER RIGHT. IT IS NOT INTENDED TO PROVIDE INFORMATION RELATIVE TO THE LOCATION OF PROPERTY OWNERSHIP BOUNDARY LINES.

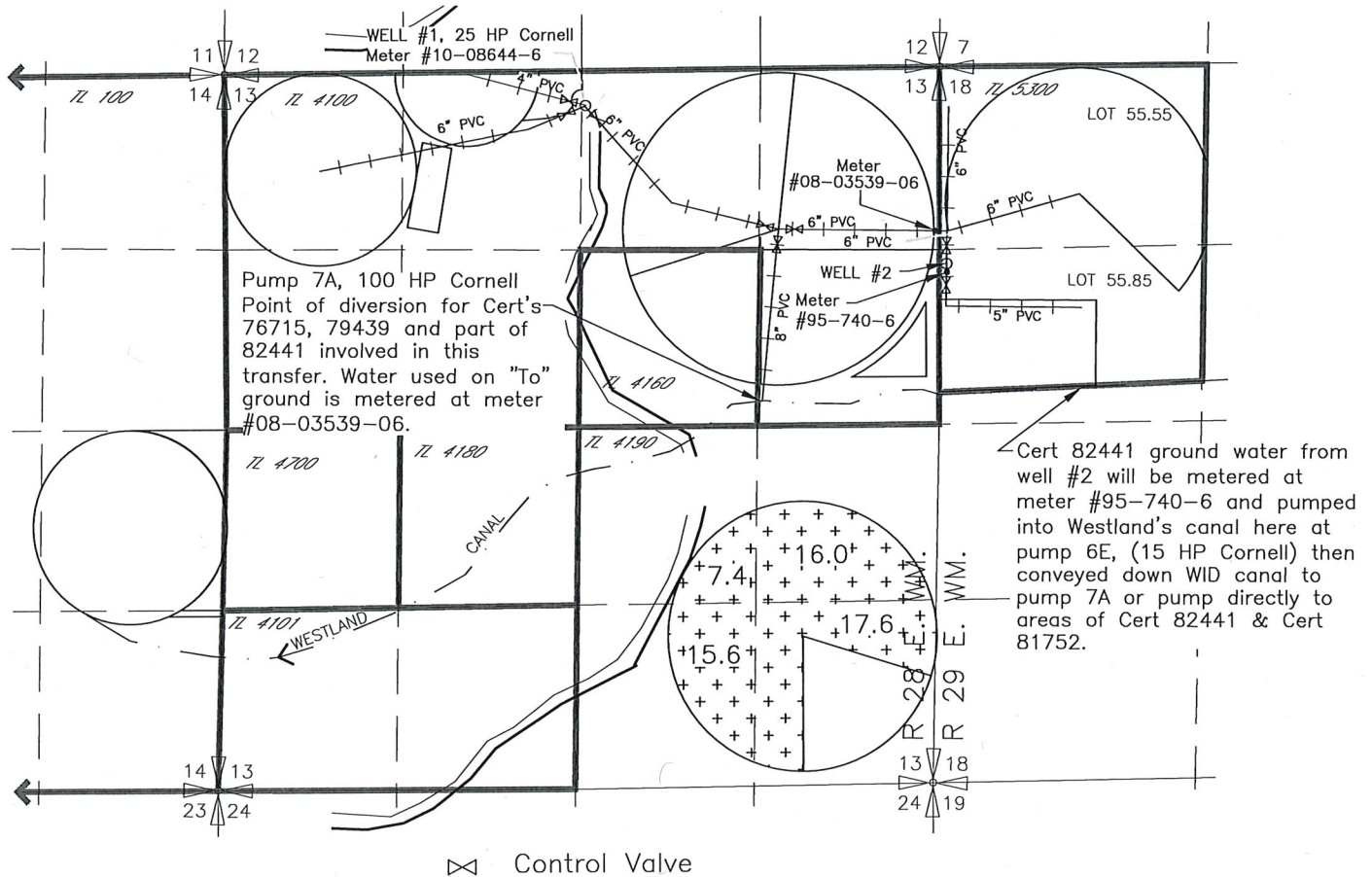
DRAWING: \\KWKFILES\Public\Project\30-08-016 - Porfly Water Rights Consulting\--00 Misc Engineering\Cad\052\Double M.2020 to TR.dwg  
PRINTED BY: rwillord on 04/28/20 06:25 AM

APR 28 2021

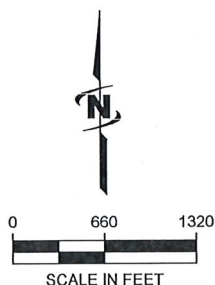
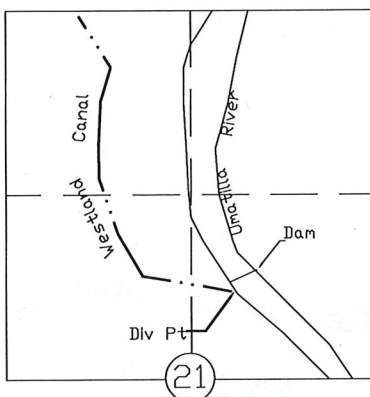
0 660 1320  
SCALE IN FEET

Salem, OR

# 2020 WESTLAND IRRIGATION DISTRICT TRANSFER APPLICATION MAP DOUBLE M RANCH, INC T-9198 CERT 76050, T-9198 CERT 79439 T3N, R 28 & 29 E, W.M. FROM MAP 3 OF 3



T3N., R 29E., W.M.



56.6 a.c. T-9198 CERT 76050  
SUPP T-9198 CERT 79439

Received by OWNER

APR 28 2020

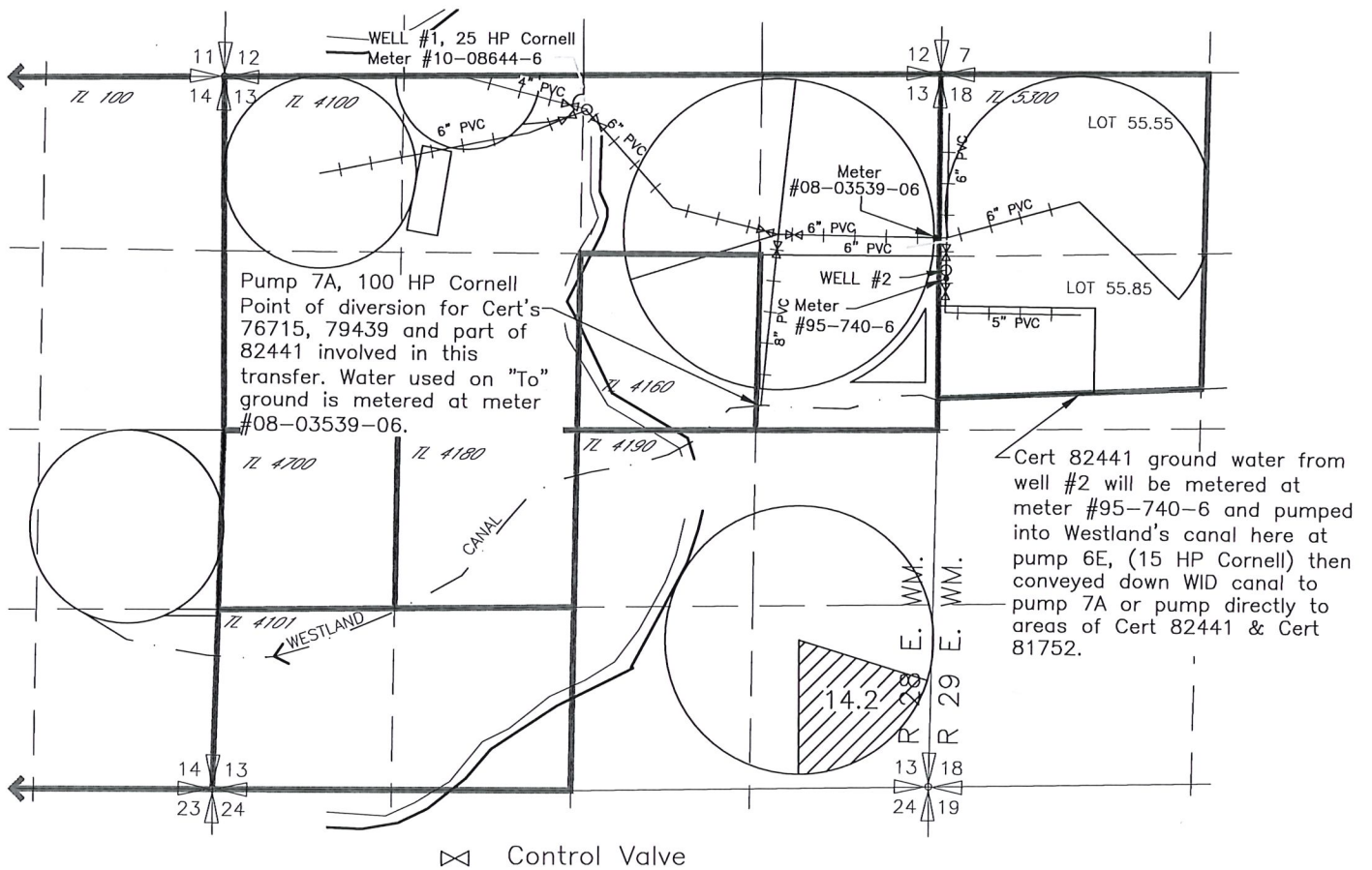
Salem, OR

NOTE: THE PURPOSE OF THIS MAP IS TO IDENTIFY THE APPROXIMATE LOCATION OF THE WATER RIGHT. IT IS NOT INTENDED TO PROVIDE INFORMATION RELATIVE TO THE LOCATION OF PROPERTY OWNERSHIP BOUNDARY LINES.

DRAWING: \\KWKFILES\Public\Project\30-08-016 - Porfly Water Rights Consulting\00 Misc Engineering\Cad\052\Double M.2020 FROM TR.dwg  
PRINTED BY: rwillard on 04/28/20 06:07 AM

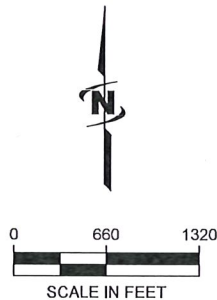
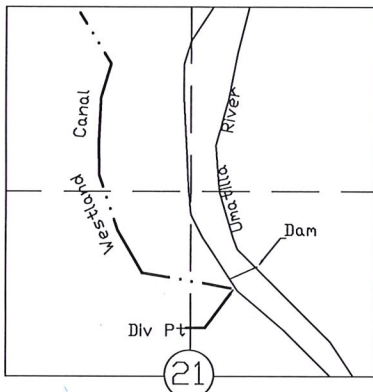


**2020 WESTLAND IRRIGATION DISTRICT  
TRANSFER APPLICATION MAP  
DOUBLE M RANCH, INC  
T-9198 CERT 76051, T-9198 CERT 79439  
T3N, R 28 & 29 E, W.M.  
FROM  
MAP 2 OF 3**



⊗ Control Valve

T3N., R 29E., W.M.



 14.2 ac

T-9198 CERT 76051  
SUPP T-9198 CERT  
79439

Received by OWRD

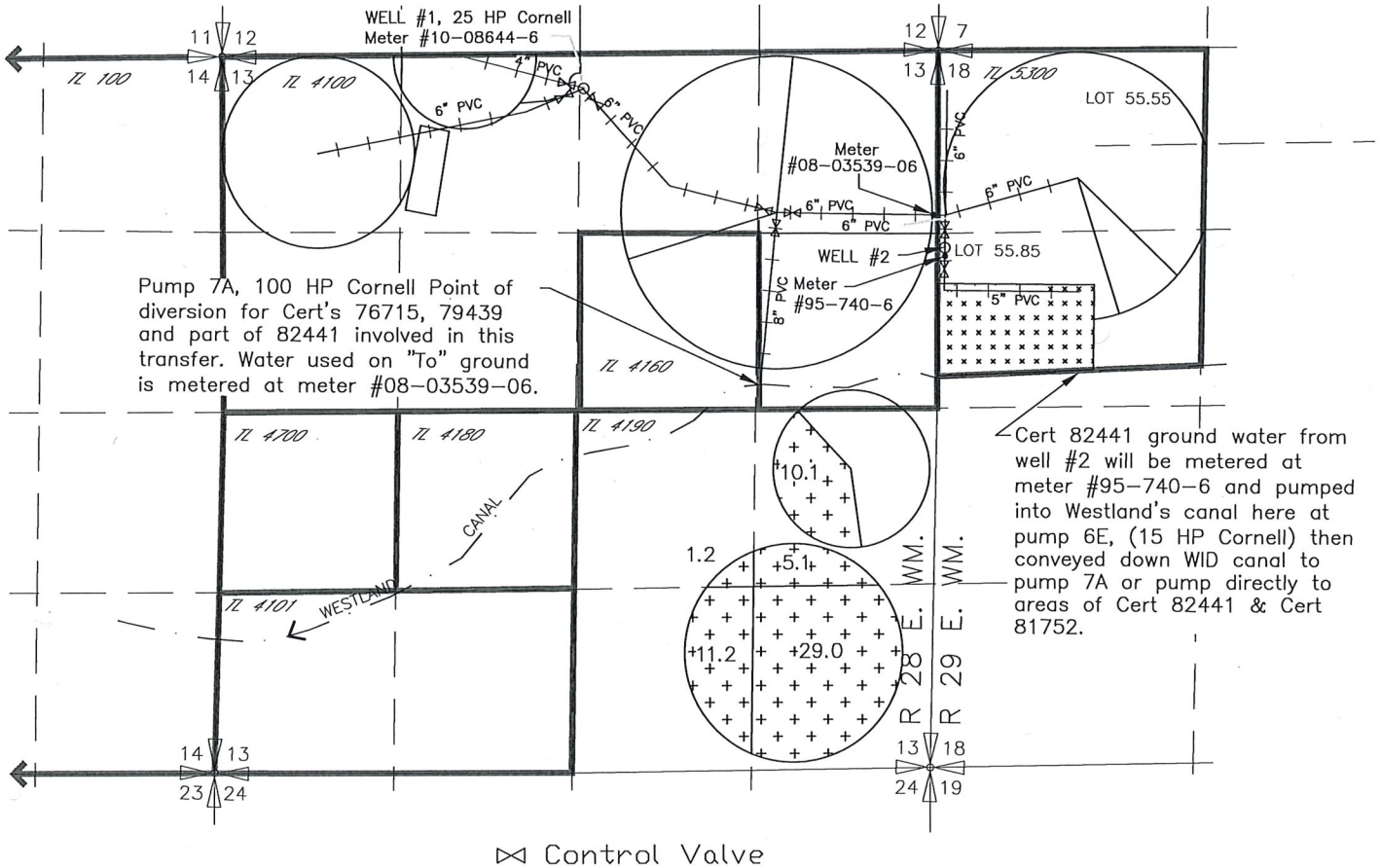
APR 28 2020

Salem, OR

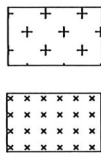
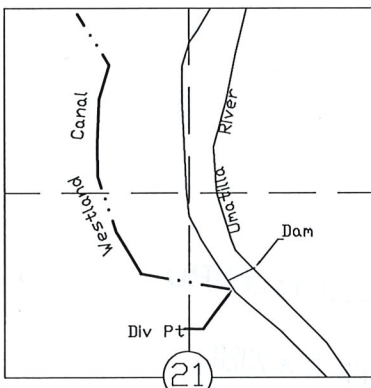
NOTE: THE PURPOSE OF THIS MAP IS TO IDENTIFY THE APPROXIMATE LOCATION OF THE WATER RIGHT. IT IS NOT INTENDED TO PROVIDE INFORMATION RELATIVE TO THE LOCATION OF PROPERTY OWNERSHIP BOUNDARY LINES.

DRAWING: \\KWKFILES\Public\Project\30-08-016 - Porflyr Water Rights Consulting\--00 Misc Engineering\Cad\052\Double M.2020 FROM TR.dwg  
PRINTED BY: rwillard on 04/28/20 06:07 AM

# 2020 WESTLAND IRRIGATION DISTRICT TRANSFER APPLICATION MAP DOUBLE M RANCH, INC T-9198 CERT 76050, T-9198 CERT 79439 T3N, R 28 & 29 E, W.M. TO MAP 3 OF 3



T3N, R 29E., W.M.



56.6 ac

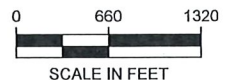
T-9198 CERT 76050  
SUPP T-9198 CERT 79439

NOT INVOLVED IN THIS  
TRANSFER

**Received by OWRD**

**APR 28 2020**

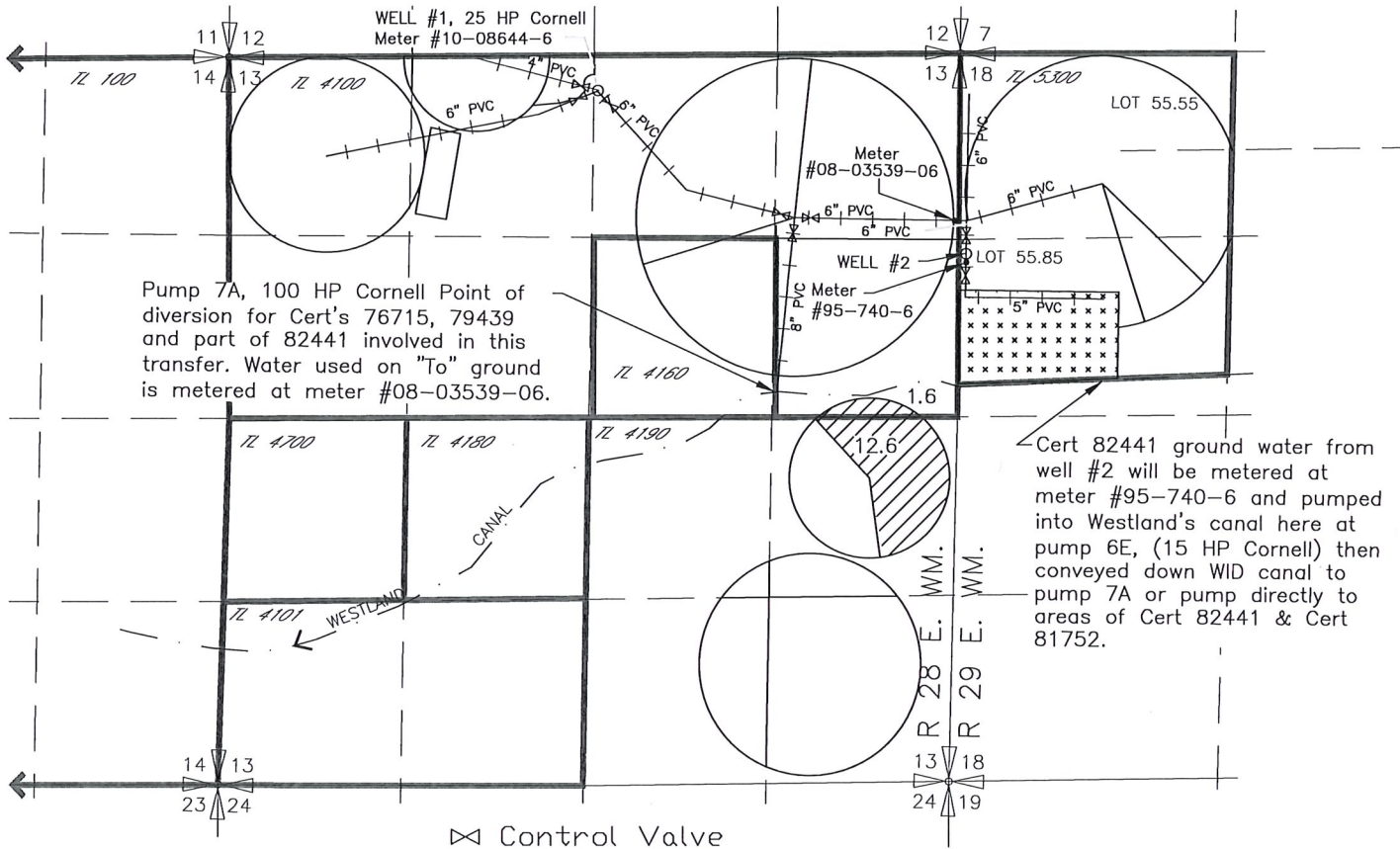
**Salem, OR**



NOTE: THE PURPOSE OF THIS MAP IS TO IDENTIFY THE APPROXIMATE LOCATION OF THE WATER RIGHT. IT IS NOT INTENDED TO PROVIDE INFORMATION RELATIVE TO THE LOCATION OF PROPERTY OWNERSHIP BOUNDARY LINES.

DRAWING: \\KWKFILES\Public\Project\30-08-016 - Porfily Water Rights Consulting\--00 Misc Engineering\Cod\052\Double M.2020 TO TR.dwg  
PRINTED BY: rwillard on 04/28/20 06:24 AM

# 2020 WESTLAND IRRIGATION DISTRICT TRANSFER APPLICATION MAP DOUBLE M RANCH, INC T-9198 CERT 76051, T-9198 CERT 79439 T3N, R 28 & 29 E, W.M. TO MAP 2 OF 3

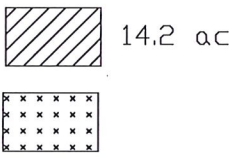
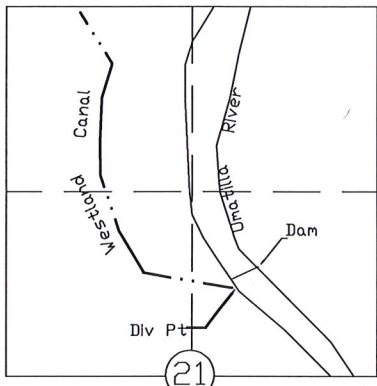


Pump 7A, 100 HP Cornell Point of diversion for Cert's 76715, 79439 and part of 82441 involved in this transfer. Water used on "To" ground is metered at meter #08-03539-06.

Cert 82441 ground water from well #2 will be metered at meter #95-740-6 and pumped into Westland's canal here at pump 6E, (15 HP Cornell) then conveyed down WID canal to pump 7A or pump directly to areas of Cert 82441 & Cert 81752.

⊠ Control Valve

T3N., R 29E., W.M.



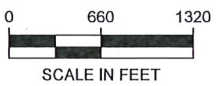
T-9198 CERT 76051  
SUPP T-9198 CERT 79439

NOT INVOLVED IN THIS TRANSFER

*Received by OWRD*

*APR 28 2020*

*Salem, OR*



NOTE: THE PURPOSE OF THIS MAP IS TO IDENTIFY THE APPROXIMATE LOCATION OF THE WATER RIGHT. IT IS NOT INTENDED TO PROVIDE INFORMATION RELATIVE TO THE LOCATION OF PROPERTY OWNERSHIP BOUNDARY LINES.  
DRAWING: \\KWKFILES\Public\Project\30-08-016 - Portfly Water Rights Consulting\00 Misc Engineering\Cad\052\Double M.2020 TO TR.dwg  
PRINTED BY: rwillard on 04/28/20 06:24 AM