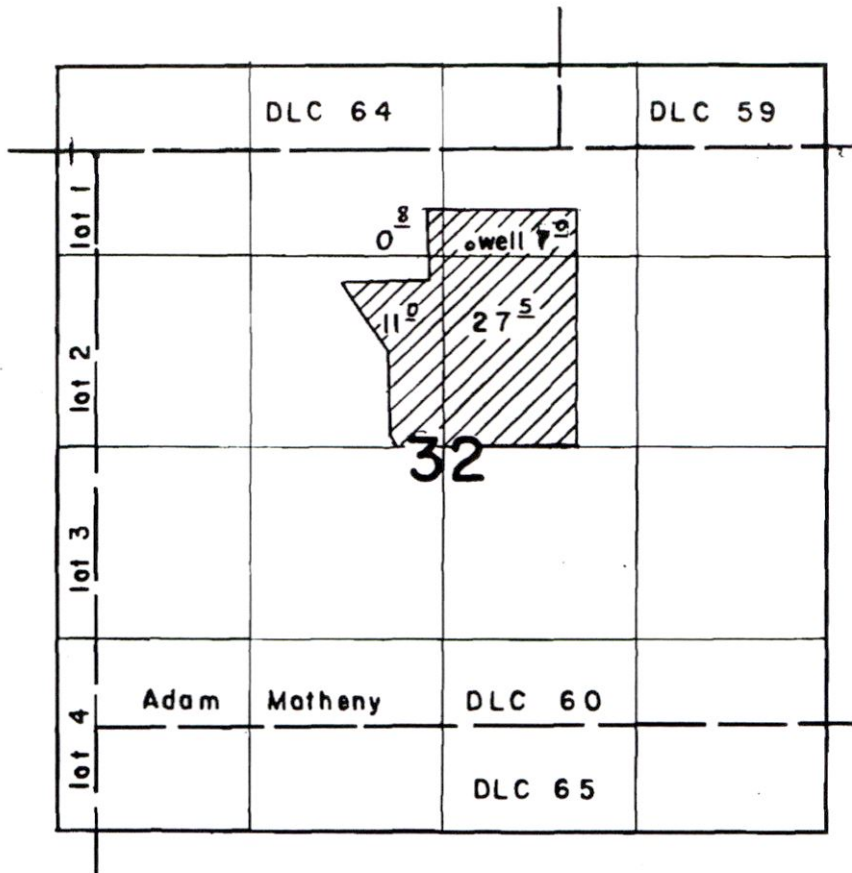


T.5S.R.3W.W.M.



FINAL PROOF SURVEY UNDER

RECEIVED

AUG 07 2020

Application No. G-2428. Permit No. G-2238.
IN NAME OF

OWRD

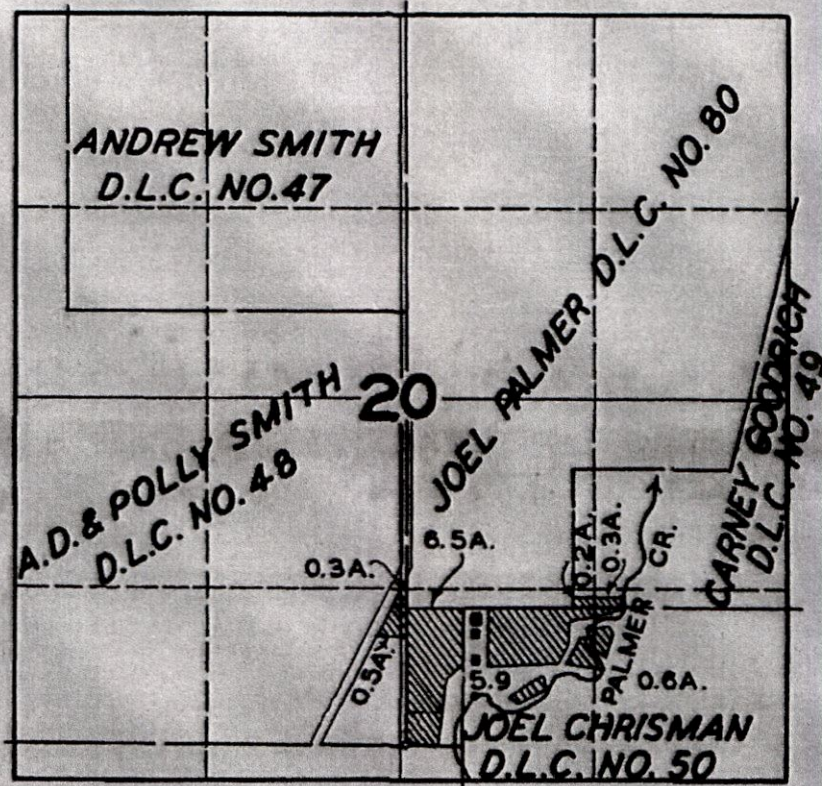
.....Clements Schrock.....

Surveyed Aug. 5, 1964, by R. Jackson.....

13509

1964-D

T.4S.R.3W.W.M.



FINAL PROOF SURVEY UNDER

Application No. **20811** Permit No. **16286**
IN NAME OF
H. G. LYON

Surveyed **JUNE 8, 1948**, by **JAS. E. BUNNELL**

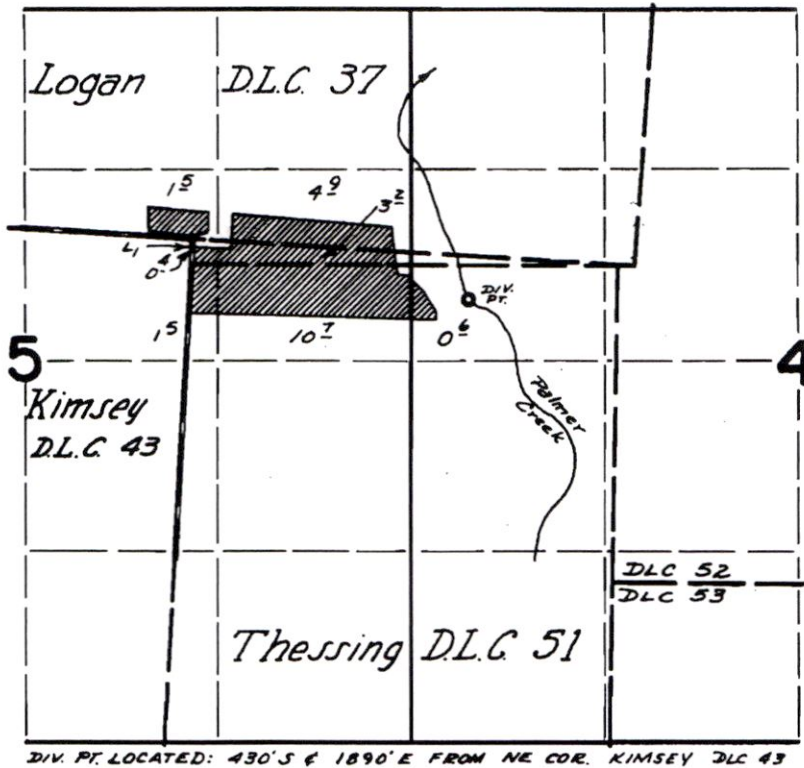
RECEIVED

AUG 07 2020

OWRD

13509

T. 5 S., R. 3 W., W.M.



FINAL PROOF SURVEY UNDER

RECEIVED

AUG 07 2020

OWRD

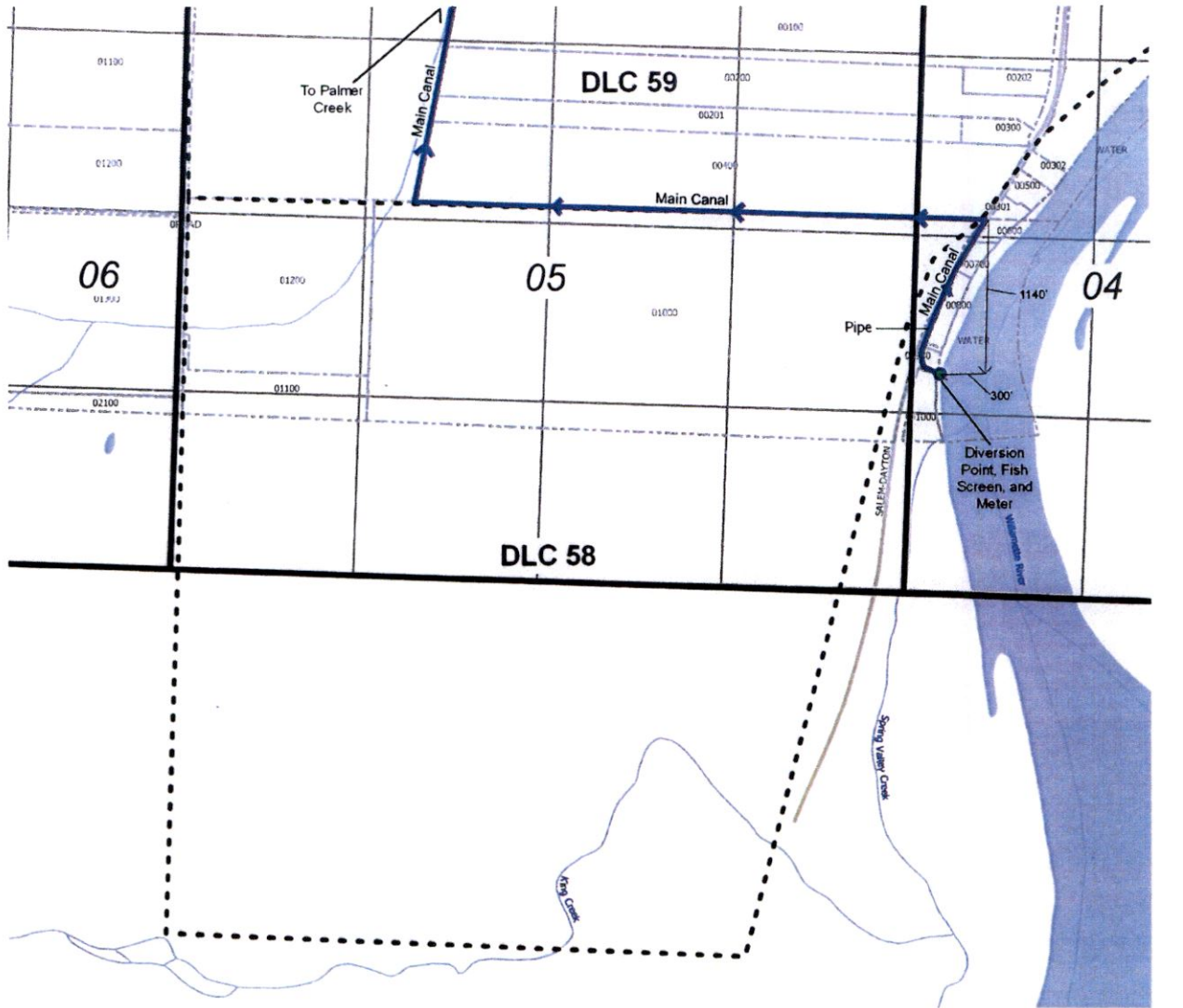
Application No. 40842 Permit No. 30422
IN NAME OF

WILLIAM D. SHUCK

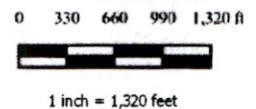
Surveyed May 19 1972, by D. Norby

13509

**PALMER CREEK WATER
IMPROVEMENT DISTRICT
T6S, R3W WM, Section 4
Yamhill County, Oregon**



Note: Updated information identifies the PCWDIC POD location is as shown on this map. Call outs have been revised to reflect actual physical location, which has not changed. POD is located 1140 feet south and 300 feet west from the NE corner of Gay DLC 58



Explanation

- Point of Diversion (POD)
- Roads
- Streams
- Main Canal
- Donation Land Claims
- County Tax Lots

NAD 1983 NARN/ Oregon North (ft)
Datum of 1983
Prepared April 29th, 2020

Sources: BLM CadNSDI PLSS, roads, county lines & tax lots (Pacific Hydro-Geology), Oregon Spatial Data Library water features, DLC lines, et al.
This map was prepared for the purpose of identifying the location of a water right only and is not intended to provide legal dimensions or locations of a property.

EnviroLogic Resources, Inc.
ENVIRONMENTAL · WATER RESOURCES SCIENTISTS

RECEIVED

AUG 07 2020

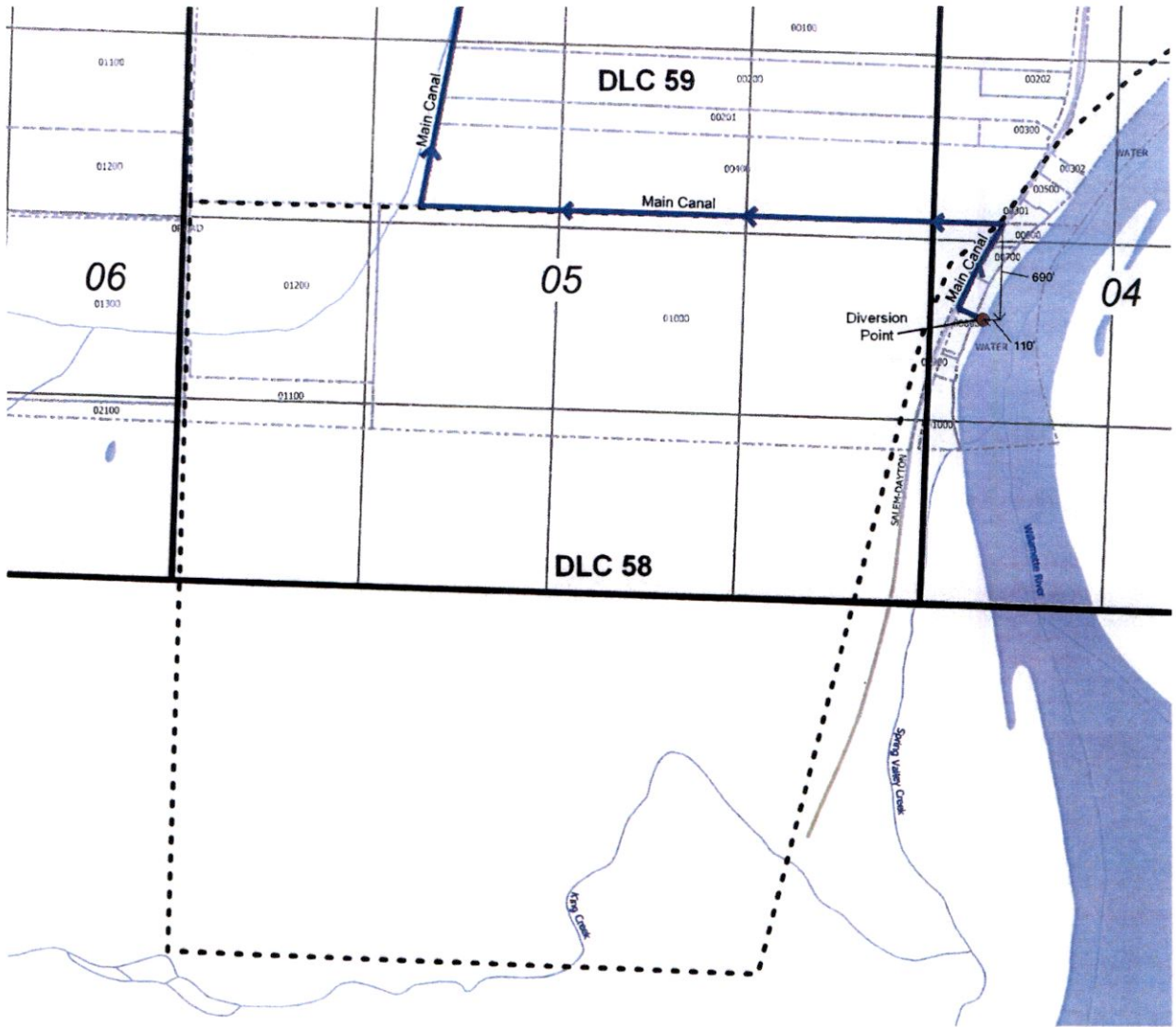
OWRD



**MAP 5
ADDITIONAL POD INFORMATION
PALMER CREEK WATER
IMPROVEMENT DISTRICT**

13509

**TRANSFER MAP
T6S, R3W WM, Section 4
Yamhill County, Oregon**



POD: Is located 690 feet south and 110 feet west from the NE corner of Gay DLC 58

0 330 660 990 1,320 ft



1 inch = 1,320 feet

Explanation

- Streams
- Roads
- Donation Land Claims
- County Tax Lots
- Point of Diversion (POD)

RECEIVED

AUG 07 2020

OWRD

NAD 1983 HARN/ Oregon North (ft)
Datum of 1983
Prepared April 29th, 2020

Sources: BLM CadNSDI PLSS, roads, county lines & tax lots (Pacific Hydro-Geology), Oregon Spatial Data Library water features, DLC lines, et al.

This map was prepared for the purpose of identifying the location of a water right only and is not intended to provide legal dimensions or locations of a property.

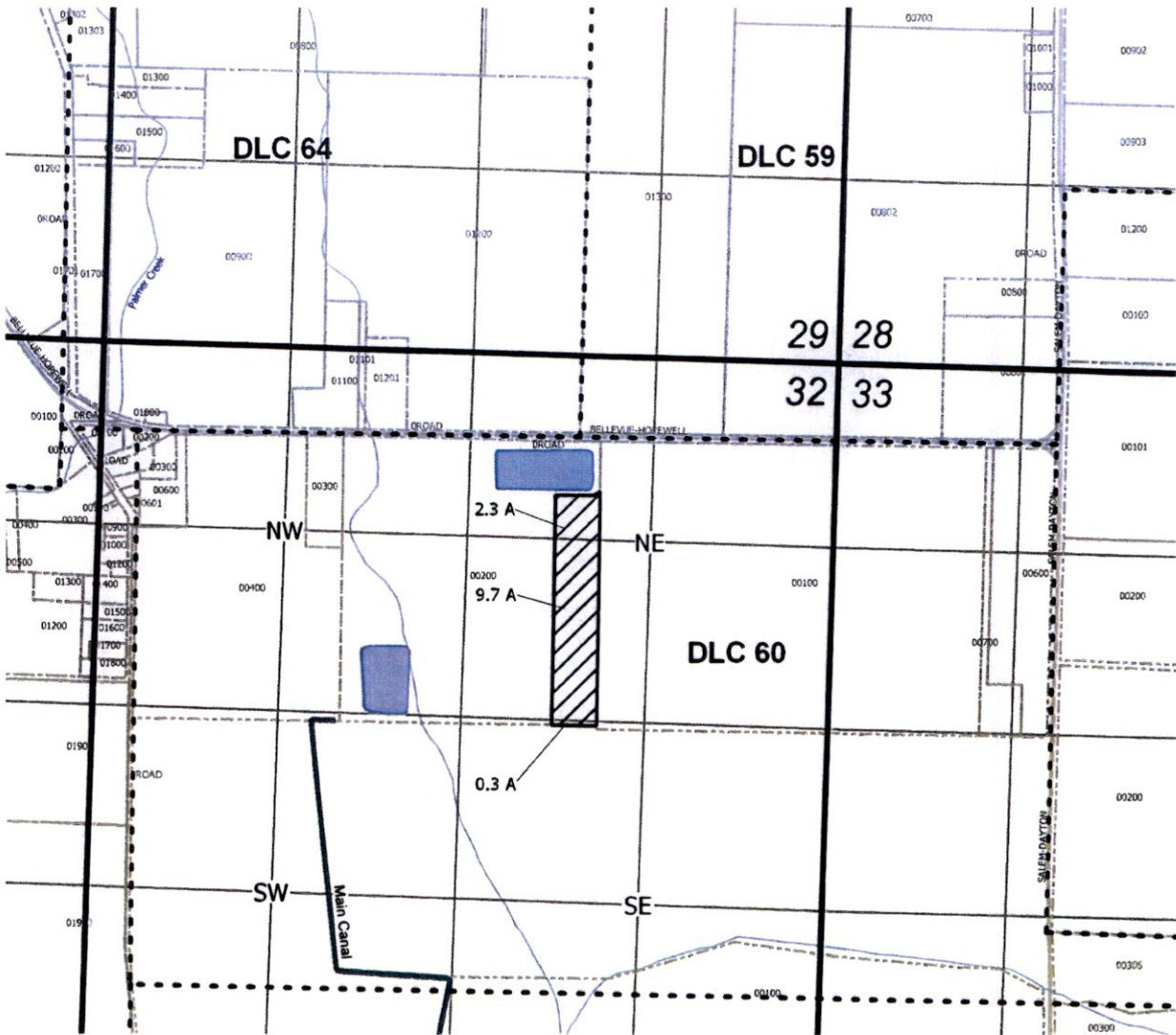


**TRANSFER APPLICATION
MAP 4 of 4
CERTIFICATE 89032 POD
LOCATION
PALMER CREEK WATER
IMPROVEMENT DISTRICT**







EnviroLogic Resources, Inc.
ENVIRONMENTAL • WATER RESOURCES SCIENTISTS

13509

**TRANSFER MAP
T5S, R3W WM, Section 32
Yamhill County, Oregon**



Explanation

-  Roads
-  Streams
-  Reservoir
-  To Lands (12.3 Acres Supplemental Irrigation)
-  Donation Land Claims
-  County Tax Lots

0 330 660 990 1,320 ft



1 inch = 1,320 feet

RECEIVED

AUG 07 2020

OWRD



NAD 1983 HARN/ Oregon North (ft)
Datum of 1983
Prepared April 29th, 2020

Sources: BLM CadNSDI PLSS, roads, county lines & tax lots
(Pacific Hydro-Geology), Oregon Spatial Data Library water
features, DLC lines, et al.

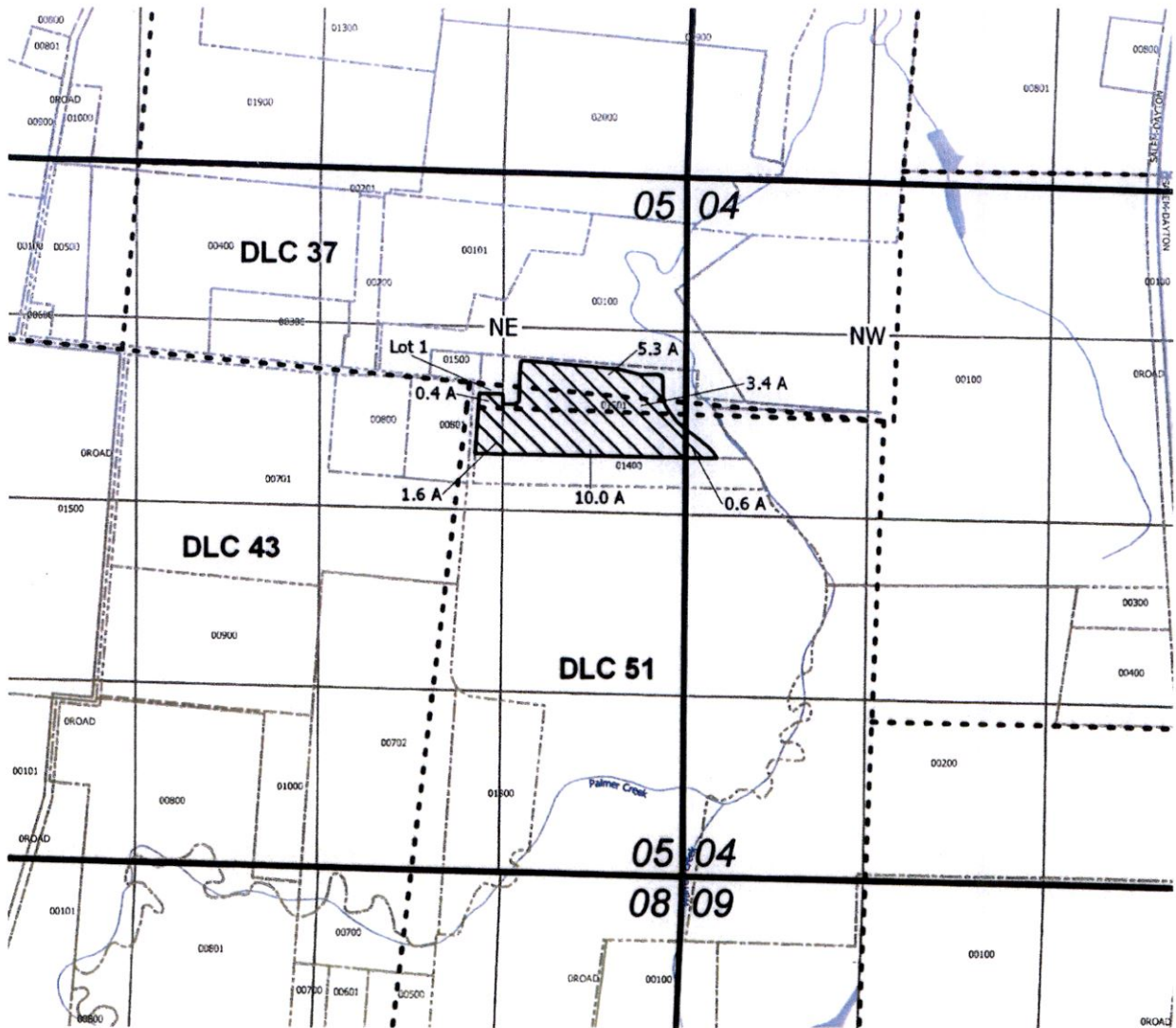
This map was prepared for the purpose of identifying the
location of a water right only and is not intended to provide
legal dimensions or locations of a property.

EnviroLogic Resources, Inc.
ENVIRONMENTAL • WATER RESOURCES SCIENTISTS






**TRANSFER APPLICATION
MAP 3 of 4
TO LANDS
PALMER CREEK WATER
IMPROVEMENT DISTRICT**

18509

TRANSFER MAP
T5S, R3W WM, Section 4 & 5
Yamhill County, Oregon



Explanation

-  Streams
-  Roads
-  From Lands (21.3 Acres Supplemental Irrigation Cert 89032)
-  Donation Land Claims
-  County Tax Lots

0 330 660 990 1,320 ft



1 inch = 1,320 feet

RECEIVED

AUG 07 2020

OWRD



NAD 1983 HARN/ Oregon North (ft)
 Datum of 1983
 Prepared April 29th, 2020

Sources: BLM CadNSDI FLSS, roads, county lines & tax lots
 (Pacific Hydro-Geology), Oregon Spatial Data Library water
 features, DLC lines, et al.

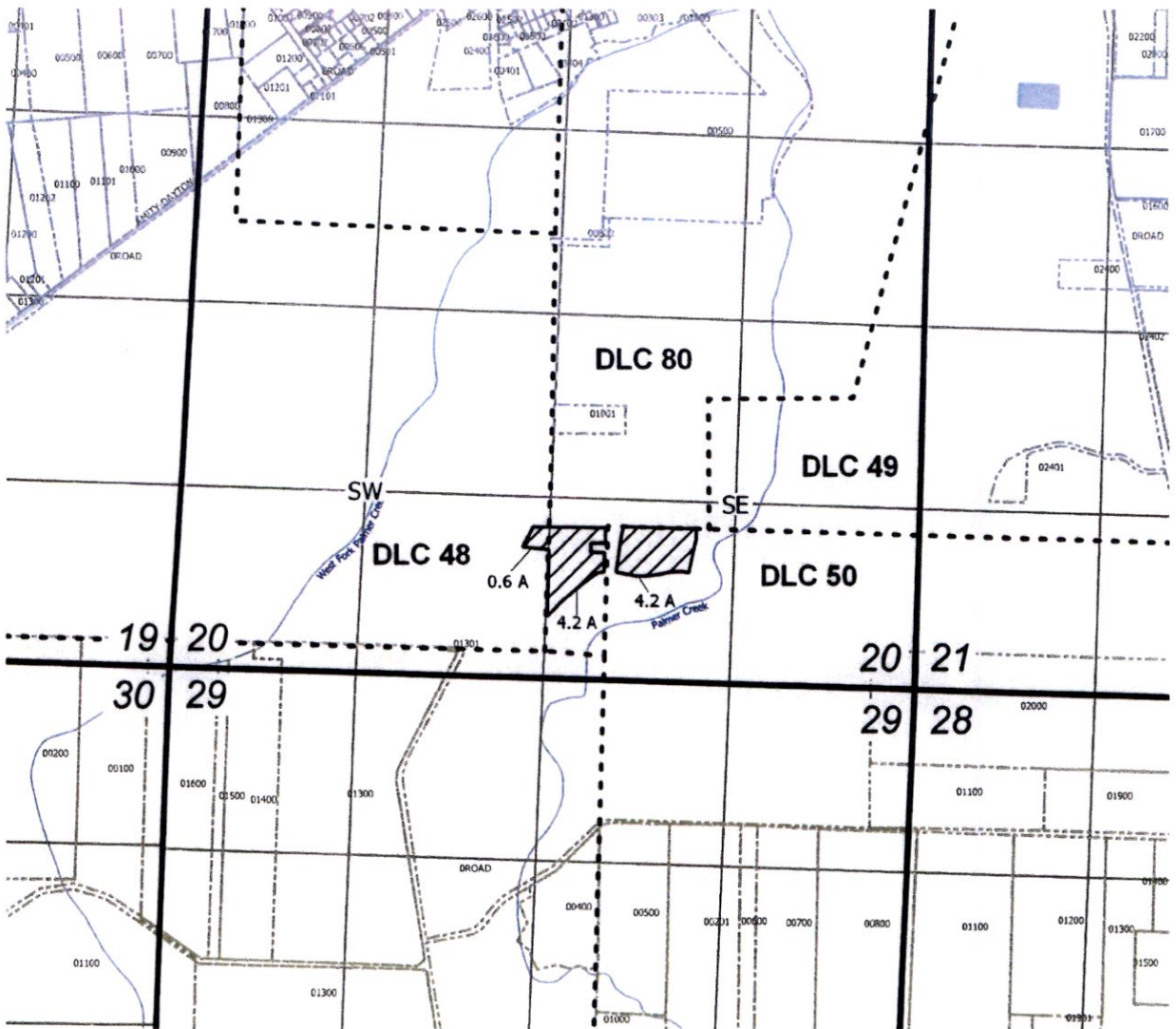
This map was prepared for the purpose of identifying the
 location of a water right only and is not intended to provide
 legal dimensions or locations of a property.

TRANSFER APPLICATION
MAP 1 of 4
FROM LANDS
PALMER CREEK WATER
IMPROVEMENT DISTRICT

EnviroLogic Resources, Inc.
 ENVIRONMENTAL • WATER RESOURCES SCIENTISTS

13509

**TRANSFER MAP
T4S, R3W WM, Section 20
Yamhill County, Oregon**



Explanation

- Streams
- Roads
- To Lands (9.0 Acres Supplemental Irrigation)
- Donation Land Claims
- County Tax Lots

NAD 1983 HARN/ Oregon North (ft)
Datum of 1983
Prepared April 29th, 2020

Sources: BLM CadNDSI PLSS, roads, county lines & tax lots (Pacific Hydro-Geology), Oregon Spatial Data Library water features, DLC lines, et al.

This map was prepared for the purpose of identifying the location of a water right only and is not intended to provide legal dimensions or locations of a property.

RECEIVED

AUG 07 2020

OWRD



**TRANSFER APPLICATION
MAP 2 of 4
TO LANDS
PALMER CREEK WATER
IMPROVEMENT DISTRICT**

EnviroLogic Resources, Inc.
ENVIRONMENTAL • WATER RESOURCES SCIENTISTS

13509